

# **EARTHQUAKE ACTIVITY IN THE YELLOWSTONE REGION**

Preliminary Epicenters

July 1 – September 30, 2022

Prepared by the University of Utah Seismograph Stations and funded by  
the U.S. Geological Survey (Cooperative Agreement No. G21AC10068)

December 22, 2022

## Foreword and Data Explanation

This report contains an epicenter map (Figure 1) and listings of earthquakes (Tables 1 and 2) detected and located in the Yellowstone region (lat. 44° 00' – 45° 10' N, long. 109° 45' – 111° 30' W). The computer program HYPOINVERSE-2000 (F. W. Klein, 2012, U.S. Geological Survey Open-File Report 02-171 revised) was used to process the earthquake data. This report also includes maps and a table of operating seismograph stations in the University of Utah's Yellowstone seismic network (Figure 2, Table 3).

The earthquake listing in Table 2 is estimated to be systematically complete above magnitude 1.5 within Yellowstone. *These data are preliminary—both the locations and magnitudes in this table are subject to revision.*

The following data are listed for each earthquake in Table 2:

- Date (yymmdd) and origin time in Coordinated Universal Time (UTC). To convert to local time, subtract seven hours for Mountain Standard Time (MST) and six hours for Mountain Daylight Time (MDT). During the report period, local time was MDT.
- Earthquake location coordinates in degrees and minutes of north latitude and west longitude, and depth in kilometers below sea level. Note that prior to October 1, 2012, the earthquake depths in these quarterly reports were computed relative to a datum of 2000 m above sea level.
- "\*" indicates poor depth resolution: no recording stations within 10 km or twice the depth.
- MAG, the computed Richter local magnitude ( $M_L$ ) for each earthquake. "W" indicates that peak amplitude measurements from Wood-Anderson records were used. Otherwise, the estimate is calculated from signal durations and is more correctly identified as coda magnitude ( $M_C$ ). The notation "--" indicates that a reliable magnitude estimate could not be made.
- NO, the number of P and S readings used in the solution.
- GAP, the largest azimuthal separation in degrees between recording stations used in the solution.
- DMN, the epicentral distance in kilometers to the closest station.
- RMS, the weighted root-mean-square of the travel-time residuals in seconds:

$$RMS = \left( \frac{\sum_i (W_i R_i)^2}{\sum_i (W_i)^2} \right)^{\frac{1}{2}}$$

where:  $R_i$  is the observed minus the computed arrival time for the  $i$ -th P or S reading, and  $W_i$  is the relative weight given to the  $i$ -th P or S arrival time (0.0 for no weight through 1.0 for full weight).



**EARTHQUAKE ACTIVITY IN THE YELLOWSTONE REGION**  
**April 1 – June 30, 2022**

by J. Farrell, R. Burlacu, P. M. Roberson, J. M. Hale, and Z. Claerhout  
with contributions by  
K. D. Koper, R. B. Smith, and K. L. Pankow

University of Utah Seismograph Stations  
115 South 1460 East, Room 107 FASB  
Salt Lake City, UT 84112-0102  
Tele: (801) 581-6274 FAX: (801) 585-5585  
email: [jamie.farrell@utah.edu](mailto:jamie.farrell@utah.edu)  
URL: <https://www.seis.utah.edu> (aka *quake.utah.edu*)

During the three-month period July 1 through September 30, 2022, the University of Utah Seismograph Stations (UUSS) located 1,026 earthquakes within the Yellowstone region (Figure 1). The total includes six earthquakes in the magnitude 3 range and 64 earthquakes in the magnitude 2 range. The largest event to occur during this period was a magnitude 3.9 earthquake on September 18. Two earthquakes were reported felt in the region during the report period (see Table 1, a cumulative tabulation of earthquakes that were felt in the Yellowstone region during 2022). Additional information on earthquakes within the Yellowstone region is available from the University of Utah Seismograph Stations.

**Online Information**

A complete copy of this report, including maps and the earthquake catalog, is available on the UUSS web site at <https://quake.utah.edu/earthquake-center/quarterly-seismicity-reports>.

*Note:* On October 1, 2012, UUSS began using the ANSS Quake Monitoring System (AQMS) software package for data acquisition and data processing. The primary effect on the data reported herein comes from computing the earthquake locations with a newer version of the computer program HYPOINVERSE-2000 (F. W. Klein, 2012, U.S. Geological Survey Open-File Report 02-171 revised) and a revised and expanded set of velocity models. As implemented at UUSS, this new version of the location program accounts for station elevation differences more accurately and reports focal depths relative to sea level instead of the 2000 m elevation datum used previously.

For earthquakes of magnitude 3 and larger in the Yellowstone region, the U. S. Geological Survey automatically posts a Community Internet Intensity Map (CIIM) on its "Did You Feel It?" web page at <http://earthquake.usgs.gov/earthquakes/dyfi/>. We encourage anyone who feels an earthquake to report their observations on this interactive web site; felt information is available by zip code on the CIIM site or can be obtained from UUSS directly.

## Earthquakes of Magnitude 3.0 or Larger

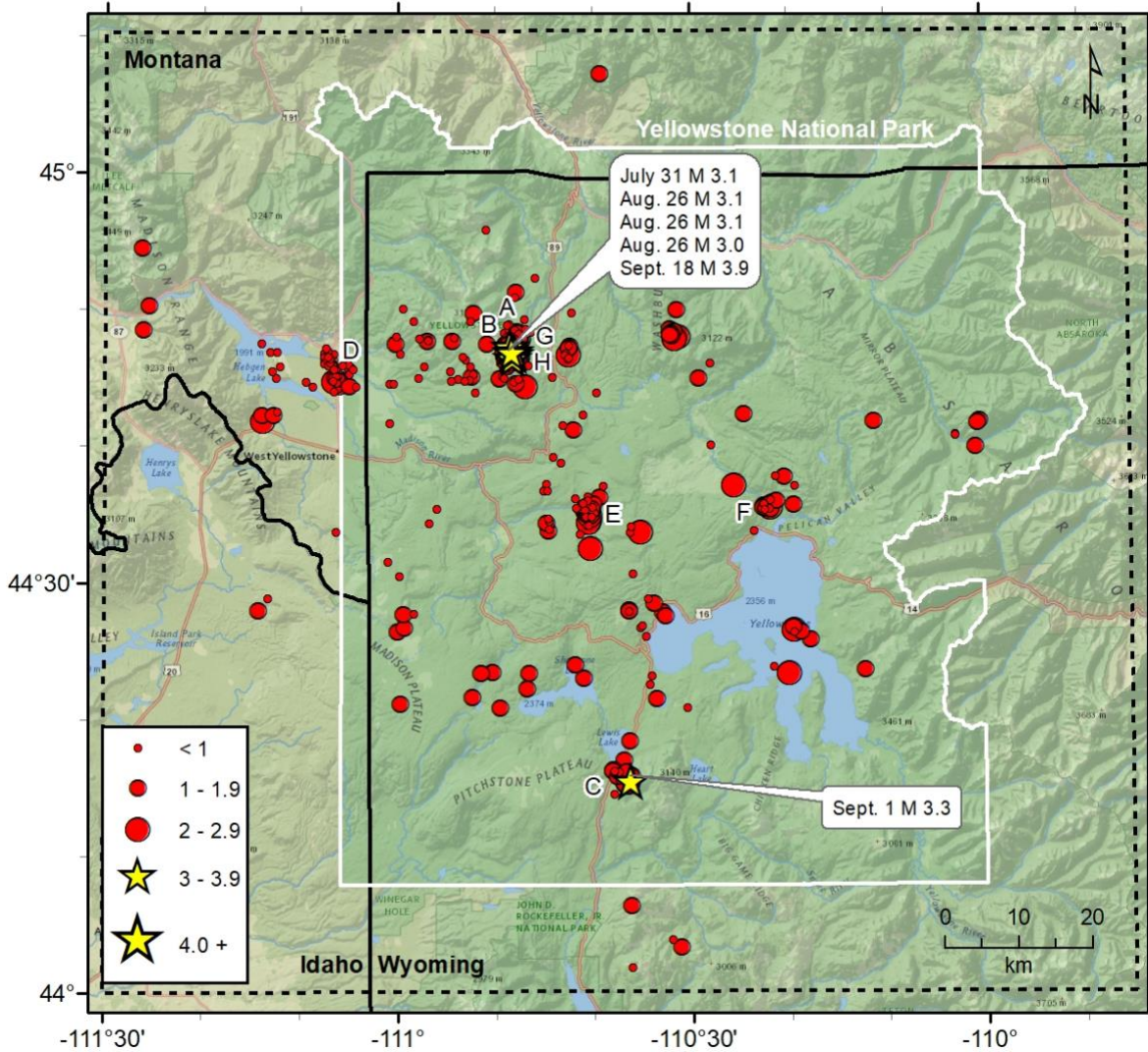
M <sub>L</sub> 3.1	July 30	01:44 MDT	6.3 mi NW of Norris Junction, YNP
M <sub>L</sub> 3.1	August 25	21:35 MDT	6.5 mi NW of Norris Junction, YNP
M <sub>L</sub> 3.1	August 25	23:51 MDT	6.2 mi NW of Norris Junction, YNP
M <sub>L</sub> 3.0	August 26	15:25 MDT	6.5 mi NW of Norris Junction, YNP
M <sub>L</sub> 3.3	August 31	19:33 MDT	10.8 mi S of West Thumb Geyser Basin, YNP
M <sub>L</sub> 3.9	September 18	06:55 MDT	7.0 mi NW of Norris Junction, YNP

## Notable Swarm Seismicity

During the report period, there were eight earthquake swarms in the Yellowstone region. For reporting purposes, we use the Mogi definition [Mogi, 1963] of a swarm and require each swarm to have ten or more earthquakes. Note that typically, around 50% of Yellowstone earthquakes occur as part of a seismic swarm [Farrell et al., 2009].

- A. A swarm of 13 earthquakes ( $0.2 \leq M \leq 3.1$ ) occurred about 6.3 mi NW of Norris Junction, YNP on July 30<sup>th</sup>.
- B. A swarm of 209 earthquakes ( $-0.6 \leq M \leq 3.1$ ) occurred about 6.5 mi NW of Norris Junction, YNP from August 26<sup>th</sup> – September 9<sup>th</sup>.
- C. A swarm of 16 earthquakes ( $0.7 \leq M \leq 3.3$ ) occurred about 10.3 mi S of West Thumb Geyser Basin, YNP from September 1<sup>st</sup> – 2<sup>nd</sup>.
- D. A swarm of 17 earthquakes ( $-0.7 \leq M \leq 1.2$ ) occurred about 7.2 mi N of West Yellowstone, MT from September 3<sup>rd</sup> – 10<sup>th</sup>.
- E. A swarm of 41 earthquakes ( $-0.1 \leq M \leq 2.6$ ) occurred about 9.3 mi S of Norris Junction, YNP on September 5<sup>th</sup>.
- F. A swarm of 15 earthquakes ( $0.1 \leq M \leq 2.0$ ) occurred about 3.1 mi N of Fishing Bridge, YNP on September 10<sup>th</sup>.
- G. A swarm of 480 earthquakes ( $-0.7 \leq M \leq 3.9$ ) occurred about 6.5 mi NW of Norris Junction, YNP from September 12<sup>th</sup> – 30<sup>th</sup> (ongoing into October).
- H. A swarm of 10 earthquakes ( $-0.2 \leq M \leq 2.1$ ) occurred about 3.2 mi NNW of Norris Junction, YNP from September 18<sup>th</sup> – 20<sup>th</sup>.

These swarms are labeled in Figure 1.



**Figure 1.** Epicenters of earthquakes located by the University of Utah Seismograph Stations, July 1, 2022, through September 30, 2022. Earthquake swarms (labeled A–H) are discussed in the text.

**Table 1**  
**EARTHQUAKES FELT IN THE YELLOWSTONE REGION**  
**January 1, 2022, to September 30, 2022**

<b>Date</b>	<b>Time†</b>	<b>Felt Information‡</b>	<b>Latitude</b>	<b>Longitude</b>	<b>Magnitude§</b>
May 11	07:32 MDT 13:32 UTC	<a href="#">Yellowstone. Felt (V) at Yellowstone National Park.</a>	44° 40.86'	109° 59.78'	M <sub>L</sub> 4.2
August 31 September 01	19:33 MDT 01:33 UTC	<a href="#">Yellowstone. Felt (III) at Yellowstone National Park.</a>	44° 15.60'	110° 36.36'	M <sub>L</sub> 3.3
September 18	06:55 MDT 12:55 UTC	<a href="#">Yellowstone. Felt (IV) at Yellowstone National Park.</a>	44° 47.34'	110° 48.60'	M <sub>L</sub> 3.9

† Times are listed both as Local Time—Mountain Standard Time (MST) or Mountain Daylight Time (MDT)—and as Coordinated Universal Time (UTC).

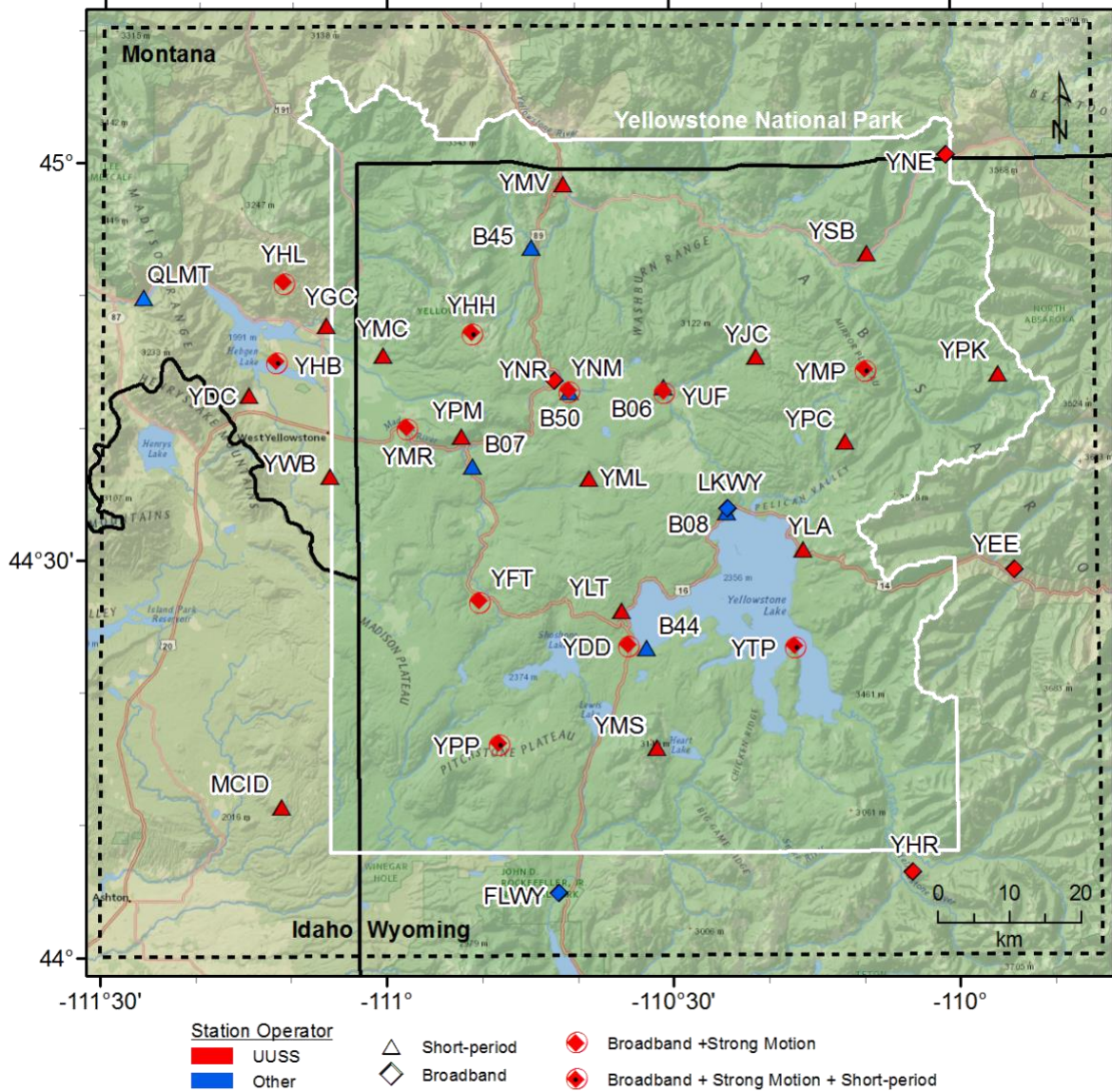
? Indicates on-line reports that appear questionable given the distance from the source

‡ *CIIM* indicates the availability of a Community Internet Intensity Map

(<http://earthquake.usgs.gov/earthquakes/dyfi>), compiled by the U.S. Geological Survey (USGS); *ShakeMap* indicates the availability of computer-generated maps of ground-shaking (<https://quake.utah.edu>), produced by the University of Utah Seismograph Stations (UUSS). Roman numerals correspond to the Modified Mercalli intensity scale. Unless otherwise indicated, felt information is from the USGS (1) CIIM reports and/or (2) PDE Monthly (or) Weekly Listing Files (<http://earthquake.usgs.gov/data/pde.php>).

§ Richter local magnitude ( $M_L$ ) or coda magnitude ( $M_C$ ) determined by UUSS. If labeled “NEIC,” data are from the National Earthquake Information Center of the USGS.

# Yellowstone Seismic Network September 30, 2022



**Figure 2.** Seismograph stations of the Yellowstone Seismic Network as of September 30, 2022.



**Table 2. Earthquakes in the Yellowstone Region: July 1–September 30, 2022**

DATE	ORIGIN TIME	LATITUDE	LONGITUDE	DEPTH	MAG	NO	GAP	DMN	RMS
220701	01:04:40.46	44°46.01'	111°05.17'	10.7	0.3W	12	108	4	0.09
220701	06:01:19.55	44°35.72'	110°19.52'	4.7	1.0	13	107	7	0.08
220701	23:52:34.29	44°45.97'	111°05.77'	6.5	0.1	11	109	3	0.16
220702	04:46:37.00	44°46.90'	111°12.41'	5.1	-0.1	11	175	4	0.18
220702	06:43:43.09	44°46.92'	111°13.17'	5.8	0.0	12	188	4	0.09
220702	20:06:27.16	44°44.99'	111°12.48'	10.1	0.6	15	159	1	0.17
220706	00:50:40.55	44°20.91'	110°30.55'	3.3	0.9	11	134	7	0.11
220706	06:20:38.58	44°47.59'	110°48.23'	6.6	0.0	11	208	4	0.12
220707	21:32:36.56	44°34.43'	110°44.88'	3.9	1.2	8	94	9	0.09
220708	10:00:35.50	44°23.41'	110°51.59'	7.3	1.4W	16	158	7	0.17
220708	11:18:13.31	44°23.51'	110°50.38'	2.3	1.5W	10	175	7	0.17
220710	15:47:53.00	44°44.40'	111°08.77'	5.4	0.7W	12	149	4	0.17
220710	18:04:17.69	44°44.70'	111°06.16'	11.1	2.5W	24	106	7	0.20
220710	18:11:40.45	44°45.29'	111°04.99'	6.6	0.1	12	170	9	0.19
220711	07:09:42.72	44°46.59'	110°48.91'	4.7	0.7W	9	186	3	0.12
220711	07:30:34.52	44°42.33'	110°24.59'	7.9	1.2W	12	227	8	0.10
220711	15:47:52.03	44°45.51'	111°12.88'	13.5	0.7	8	246	2	0.15
220712	03:34:45.91	44°45.79'	111°04.83'	5.4	0.7W	11	179	9	0.15
220712	05:15:05.25	44°45.75'	111°05.12'	7.7	0.9W	14	179	9	0.15
220712	05:15:20.91	44°45.68'	111°04.64'	5.0	-0.2	10	176	9	0.15
220713	05:10:56.64	44°49.77'	110°52.30'	3.3	1.3W	17	174	5	0.11
220715	19:35:52.39	44°22.34'	110°46.87'	2.7	1.3W	9	96	10	0.08
220717	00:53:40.22	44°03.98'	110°32.08'	13.9	0.9	11	159	13	0.11
220717	00:53:56.29	44°45.67'	111°06.45'	12.6	-0.1	8	100	4	0.08
220717	03:39:49.45	44°45.97'	111°07.25'	8.5	-0.1	10	188	6	0.17
220717	03:51:35.53	44°46.12'	111°07.05'	13.0	-0.3	8	122	3	0.15
220717	13:17:44.14	44°46.10'	110°48.85'	5.3	0.4W	7	169	4	0.09
220718	10:06:31.71	44°46.58'	110°48.07'	6.5	0.5W	11	195	4	0.10
220718	21:20:21.57	44°26.74'	110°59.43'	8.2	1.4W	13	125	12	0.14
220718	21:21:18.00	44°26.49'	111°00.06'	4.5*	1.6W	14	129	13	0.17
220718	21:30:48.57	44°27.73'	110°59.52'	3.7*	1.2W	14	125	12	0.12
220719	02:20:08.78	44°46.78'	110°48.90'	4.8	1.1W	19	94	3	0.19
220719	19:57:06.18	44°47.49'	110°50.92'	4.8	1.4W	21	130	0	0.18
220719	23:01:29.62	44°49.21'	110°58.39'	4.9	0.8W	15	214	7	0.15
220720	14:48:51.50	44°54.50'	111°26.34'	8.5*	1.9W	17	93	26	0.17
220721	04:28:02.21	44°50.27'	111°25.64'	13.7	1.1W	14	143	21	0.15
220721	23:34:38.89	44°47.33'	110°48.52'	5.6	1.0W	18	114	3	0.17
220722	14:23:08.43	44°47.71'	110°57.01'	6.3	1.0W	18	150	6	0.18
220722	15:57:59.66	44°40.13'	110°28.00'	5.4	0.9	9	128	6	0.07
220722	17:32:47.06	44°41.19'	110°42.02'	8.0	1.6W	24	43	3	0.16
220725	04:16:16.18	44°01.95'	110°36.21'	6.0	0.9	12	168	9	0.11
220727	03:20:04.93	44°49.96'	110°31.45'	2.0*	1.1W	14	123	13	0.15
220727	23:00:06.57	44°48.12'	110°32.18'	5.8	1.0	7	261	10	0.11
220729	12:24:59.86	44°44.93'	110°53.90'	7.1	0.8W	14	122	6	0.10
220730	02:27:24.46	44°46.52'	110°48.38'	4.9	1.7W	24	89	4	0.16

**Table 2. Earthquakes in the Yellowstone Region: July 1–September 30, 2022**

DATE	ORIGIN TIME	LATITUDE	LONGITUDE	DEPTH	MAG	NO	GAP	DMN	RMS
220730	02:31:22.33	44°47.13'	110°47.97'	5.8	0.6W	9	214	4	0.06
220730	07:44:55.34	44°46.79'	110°48.04'	7.7	3.1W	33	98	4	0.20
220730	07:50:44.16	44°47.04'	110°47.93'	5.1	0.6W	8	211	4	0.06
220730	07:51:27.54	44°46.63'	110°48.08'	3.1	0.3W	8	197	4	0.10
220730	08:00:22.02	44°46.67'	110°48.18'	4.8	0.8W	14	103	4	0.12
220730	08:15:52.96	44°47.04'	110°47.97'	5.0	0.4W	12	211	4	0.08
220730	08:31:46.03	44°46.73'	110°48.13'	7.6	2.5W	29	96	4	0.17
220730	09:50:21.89	44°47.33'	110°47.79'	5.2	0.3W	9	221	4	0.06
220730	09:56:32.68	44°47.10'	110°48.22'	5.2	0.6W	7	212	4	0.05
220730	11:02:02.41	44°46.40'	110°48.34'	4.7	1.0W	15	100	4	0.12
220730	11:02:55.70	44°46.88'	110°48.19'	5.2	0.7W	10	204	4	0.11
220730	17:15:41.41	44°46.74'	110°48.21'	4.9	0.2	6	199	4	0.04
220730	22:28:33.78	44°41.73'	111°00.85'	6.7	0.9W	15	61	5	0.15
220731	11:04:35.80	44°49.17'	110°52.56'	1.8	0.6W	12	232	4	0.07
220801	11:34:10.15	44°48.08'	110°31.95'	6.8	1.4W	19	92	9	0.13
220801	14:11:10.54	44°41.55'	110°43.13'	3.9	--	13	95	4	0.15
220801	14:11:11.85	44°42.35'	110°41.09'	5.9	0.0	13	148	1	0.18
220802	06:43:54.78	44°40.78'	110°02.94'	12.8	0.7	8	165	11	0.16
220802	07:14:09.09	44°40.70'	110°02.91'	12.6	0.5	7	91	11	0.06
220802	11:35:48.90	44°47.45'	110°48.66'	7.7	0.7W	13	223	3	0.11
220802	13:53:39.10	44°47.11'	110°48.20'	5.5	1.3W	15	193	4	0.12
220803	16:30:54.65	44°47.02'	110°48.04'	5.0	0.7W	10	210	4	0.06
220803	16:33:19.15	44°46.82'	110°48.20'	4.3	0.4	10	202	4	0.09
220803	16:33:49.80	44°46.13'	110°48.40'	3.2	-0.3	6	177	4	0.09
220803	18:09:12.45	44°41.74'	110°00.49'	13.3	1.1	8	192	8	0.11
220803	20:04:15.18	44°47.10'	110°47.97'	5.0	1.0	18	106	4	0.16
220804	00:31:25.35	44°47.31'	110°48.11'	5.1	0.4	9	219	4	0.12
220804	03:39:58.08	44°45.89'	110°52.58'	4.6	0.2	8	131	3	0.11
220804	15:49:09.34	44°34.25'	110°40.69'	10.5	0.8	10	116	5	0.11
220804	22:16:40.78	44°47.11'	110°48.03'	4.9	1.1W	9	212	4	0.10
220805	03:17:48.64	44°50.09'	110°59.46'	2.1	0.5	12	229	8	0.14
220806	03:20:02.84	44°48.53'	111°26.19'	11.9	1.3W	24	117	19	0.17
220806	06:14:03.61	44°25.83'	110°17.92'	2.7	1.8W	19	179	9	0.21
220806	09:23:13.75	44°26.56'	110°19.55'	4.3	2.1W	24	71	9	0.08
220806	19:36:18.17	44°26.40'	110°18.92'	4.8	1.6W	13	72	9	0.21
220806	22:54:09.35	44°46.76'	110°48.15'	4.2	-0.2	7	200	4	0.09
220807	13:31:40.20	44°48.13'	110°48.44'	3.9	0.0	9	239	4	0.14
220807	15:03:22.36	44°47.37'	110°48.24'	5.5	0.3	6	221	4	0.04
220807	15:07:54.04	44°47.59'	110°47.95'	5.4	0.6W	9	229	4	0.07
220807	15:58:45.01	44°47.06'	110°48.33'	5.2	0.6	7	209	4	0.03
220807	18:37:53.61	44°44.95'	111°06.31'	11.7	1.3W	15	87	5	0.15
220807	18:39:38.73	44°44.80'	111°06.45'	9.8	0.4W	11	86	6	0.14
220807	18:44:13.25	44°45.01'	111°06.56'	12.7	1.7W	17	91	5	0.14
220807	18:48:10.50	44°44.72'	111°06.58'	12.5	2.0W	18	86	6	0.14
220808	00:35:49.69	44°27.60'	110°32.75'	1.3	1.6	12	103	4	0.21

**Table 2. Earthquakes in the Yellowstone Region: July 1–September 30, 2022**

DATE	ORIGIN TIME	LATITUDE	LONGITUDE	DEPTH	MAG	NO	GAP	DMN	RMS
220808	00:35:56.10	44°28.50'	110°33.90'	4.6	1.5	7	149	5	0.21
220808	00:36:04.61	44°27.89'	110°33.00'	2.3	1.9	5	128	4	0.07
220808	02:21:03.05	44°46.93'	110°48.34'	5.0	1.0W	14	103	4	0.10
220808	02:47:06.05	44°46.90'	110°48.43'	4.7	0.9W	12	102	4	0.10
220808	08:31:13.94	44°26.41'	110°19.56'	2.2	0.9	7	172	9	0.04
220808	11:38:05.14	44°46.46'	110°48.22'	5.1	2.8W	23	89	4	0.13
220808	16:27:28.87	44°33.59'	110°41.44'	7.9	0.6	14	113	6	0.15
220809	00:04:41.16	44°46.68'	110°48.73'	4.2	1.3W	19	99	3	0.23
220809	04:48:17.92	44°46.60'	110°48.23'	4.1	0.1	10	194	4	0.14
220809	06:04:39.59	44°26.78'	110°19.67'	3.6	1.2	11	135	9	0.08
220809	06:42:13.70	44°46.68'	110°48.44'	4.4	0.9W	14	101	4	0.12
220810	18:14:37.19	44°46.70'	110°48.25'	5.4	0.8	10	198	4	0.13
220810	23:43:21.89	44°23.64'	110°12.30'	7.6	1.0	14	159	14	0.10
220811	14:08:11.53	44°36.77'	110°44.75'	2.7	--	8	180	8	0.05
220811	14:09:02.63	44°36.82'	110°45.09'	4.8	0.1	9	179	8	0.12
220812	06:15:18.44	44°47.26'	110°47.74'	5.9	0.4W	8	218	4	0.07
220812	12:26:37.91	44°46.58'	110°48.34'	4.6	0.8W	16	101	4	0.11
220812	22:29:46.27	44°33.81'	111°06.42'	15.2	0.3	8	209	5	0.14
220813	01:43:07.73	44°39.88'	110°00.86'	14.3	1.1	10	106	10	0.09
220813	07:45:16.08	44°46.56'	110°48.35'	4.6	0.9W	17	101	4	0.15
220813	07:45:46.18	44°46.56'	110°48.22'	4.8	1.4W	23	91	4	0.18
220813	10:15:09.16	44°46.89'	110°48.23'	4.9	0.8W	14	104	4	0.11
220813	11:01:22.28	44°46.94'	110°48.10'	6.2	1.2W	21	102	4	0.20
220813	23:05:49.44	44°47.82'	110°48.19'	6.1	0.8	5	236	4	0.03
220814	06:58:40.86	44°47.98'	110°31.28'	6.7	2.5W	26	94	9	0.17
220814	07:21:34.86	44°46.56'	110°48.11'	3.8	1.0W	17	102	4	0.11
220814	22:27:28.35	44°48.54'	110°32.10'	4.5	1.8W	14	156	10	0.13
220815	00:29:15.34	44°47.28'	110°47.98'	5.0	0.1	7	219	4	0.04
220815	02:44:04.09	44°47.98'	110°54.28'	4.8	0.7	9	209	4	0.06
220815	07:48:06.91	44°48.27'	110°32.08'	5.0	1.6W	21	93	10	0.15
220815	11:06:04.38	44°46.61'	110°48.34'	6.1	2.3W	28	92	4	0.17
220815	18:11:22.71	44°47.29'	110°47.86'	5.1	0.7	9	219	4	0.14
220815	18:11:36.88	44°46.52'	110°48.28'	3.2	0.0	8	191	4	0.17
220816	07:48:28.91	44°47.05'	110°47.93'	5.0	0.1	9	211	4	0.07
220816	08:41:37.77	44°46.88'	110°48.09'	5.0	0.6W	9	205	4	0.07
220816	11:54:28.09	44°46.79'	110°59.80'	8.0	0.6W	19	163	2	0.16
220816	15:44:34.74	44°38.81'	110°43.35'	8.6	0.1	10	127	8	0.11
220816	15:45:03.75	44°39.27'	110°44.19'	6.6	0.2	15	121	8	0.14
220816	16:13:28.75	44°46.76'	110°48.42'	4.0	0.5	9	197	4	0.08
220817	20:13:17.72	44°46.65'	110°48.45'	4.7	2.0W	23	93	4	0.15
220817	21:19:22.36	44°46.97'	110°48.24'	4.2	0.5	11	207	4	0.14
220819	03:44:47.05	44°23.07'	110°41.03'	2.2	1.0	13	95	9	0.13
220820	06:33:33.23	44°47.56'	111°14.01'	18.7	-0.3	8	263	6	0.11
220820	06:51:44.21	44°47.35'	110°48.73'	5.2	0.6W	15	116	3	0.13
220820	23:58:51.22	44°48.43'	110°31.73'	6.1	1.7W	15	155	10	0.12

**Table 2. Earthquakes in the Yellowstone Region: July 1–September 30, 2022**

DATE	ORIGIN TIME	LATITUDE	LONGITUDE	DEPTH	MAG	NO	GAP	DMN	RMS
220821	03:04:10.02	44°44.89'	110°52.71'	-0.3	0.1	7	108	5	0.31
220821	03:47:35.42	44°44.96'	110°29.23'	1.9	1.3W	16	133	4	0.18
220821	04:10:32.87	44°46.06'	110°28.05'	2.0	0.7	12	252	7	0.21
220821	04:41:18.43	44°46.57'	110°48.60'	4.9	1.2W	21	90	3	0.16
220821	04:42:13.36	44°46.58'	110°48.47'	4.9	1.3W	18	100	4	0.16
220821	14:59:52.99	44°28.91'	111°13.34'	14.6	0.9	14	233	17	0.18
220822	00:25:53.05	44°03.44'	110°31.21'	4.9*	1.7	12	107	15	0.09
220822	16:52:24.88	44°18.49'	110°36.41'	6.3	1.1	15	56	8	0.28
220822	17:43:15.96	44°21.23'	110°59.78'	4.2*	1.2	15	115	17	0.13
220822	19:07:46.86	44°47.70'	110°48.55'	4.8	0.6	10	232	3	0.16
220823	05:41:11.08	44°45.20'	111°06.38'	8.7	0.0	15	92	5	0.19
220823	05:41:28.25	44°44.02'	111°06.61'	2.2	-0.4	9	79	7	0.10
220823	05:46:22.72	44°45.47'	111°06.27'	9.4	0.8W	18	94	4	0.18
220823	09:03:08.79	44°46.53'	110°48.11'	3.9	0.1	10	193	4	0.12
220823	09:12:54.72	44°44.79'	111°06.73'	7.7	-0.4	12	89	6	0.19
220823	09:16:45.46	44°46.74'	110°48.39'	4.2	1.2W	21	96	4	0.15
220823	10:22:26.76	44°46.89'	110°48.89'	4.7	1.0W	19	100	3	0.11
220823	12:44:27.30	44°45.93'	111°06.73'	11.8	0.1	10	110	3	0.14
220823	12:45:24.71	44°27.79'	110°58.42'	8.0	0.4	9	181	11	0.18
220823	13:39:38.42	44°46.74'	110°48.22'	3.1	0.7	15	199	4	0.14
220823	14:31:37.28	44°45.84'	111°06.50'	11.1	0.1	9	103	4	0.20
220823	15:12:34.95	44°45.50'	111°06.17'	10.7	0.2	12	93	4	0.19
220823	21:52:18.49	44°45.48'	111°06.44'	11.1	0.6	10	96	4	0.18
220824	01:36:55.06	44°22.65'	110°34.35'	1.9	--	8	179	2	0.16
220824	01:36:56.61	44°23.28'	110°34.14'	2.2	0.8	13	78	1	0.13
220824	10:50:52.61	44°27.98'	111°14.37'	12.6	1.1W	14	239	19	0.19
220824	13:09:51.98	45°07.20'	110°39.27'	7.4*	1.1	17	101	40	0.18
220824	22:17:31.81	44°47.85'	110°56.97'	4.0	0.7	10	230	6	0.10
220826	03:35:16.93	44°46.96'	110°48.10'	9.6	3.1W	30	80	4	0.20
220826	03:44:48.34	44°47.19'	110°47.94'	5.3	0.6W	12	216	4	0.11
220826	03:48:54.60	44°44.59'	110°47.92'	4.8	0.9W	14	85	6	0.09
220826	04:59:30.57	44°47.36'	110°48.14'	5.1	-0.1	6	221	4	0.04
220826	05:51:13.81	44°46.53'	110°48.23'	11.6	3.1W	33	62	10	0.21
220826	05:52:25.13	44°46.72'	110°48.37'	4.8	2.4W	22	95	4	0.14
220826	05:55:39.18	44°47.38'	110°48.26'	5.7	0.6W	8	221	4	0.08
220826	05:56:26.48	44°47.46'	110°47.40'	5.3	-0.5	6	287	5	0.07
220826	05:56:34.33	44°46.30'	110°49.37'	4.2	0.0	8	231	3	0.06
220826	05:56:44.45	44°46.89'	110°48.35'	5.0	0.5	7	203	4	0.08
220826	05:57:10.35	44°44.99'	110°49.12'	0.6	-0.2	6	138	5	0.04
220826	06:04:29.04	44°47.29'	110°48.10'	4.7	-0.2	9	218	4	0.07
220826	06:04:56.36	44°47.33'	110°48.04'	5.3	0.5	10	220	4	0.08
220826	06:05:20.64	44°47.34'	110°47.91'	4.8	-0.3	8	222	4	0.08
220826	06:11:43.09	44°47.36'	110°48.21'	4.9	0.2	9	220	4	0.08
220826	06:16:04.41	44°47.07'	110°47.98'	3.8	0.5W	10	212	4	0.13
220826	06:20:14.16	44°47.38'	110°48.21'	5.0	0.5W	7	221	4	0.06

**Table 2. Earthquakes in the Yellowstone Region: July 1–September 30, 2022**

DATE	ORIGIN TIME	LATITUDE	LONGITUDE	DEPTH	MAG	NO	GAP	DMN	RMS
220826	06:21:02.48	44°46.68'	110°48.49'	4.4	-0.3	6	195	4	0.05
220826	06:23:01.13	44°46.80'	110°48.26'	4.8	1.5W	20	97	4	0.12
220826	06:31:20.87	44°46.82'	110°48.36'	5.0	1.5W	17	102	4	0.13
220826	06:48:51.55	44°46.76'	110°48.59'	4.9	1.4W	17	95	3	0.12
220826	06:51:19.96	44°47.00'	110°48.16'	4.5	--	9	208	4	0.09
220826	06:51:21.52	44°46.74'	110°48.27'	4.8	0.9W	15	103	4	0.17
220826	06:53:21.37	44°47.47'	110°47.98'	5.1	0.8W	14	225	4	0.09
220826	07:10:55.12	44°46.64'	110°48.53'	4.7	1.4W	21	92	4	0.15
220826	07:20:26.35	44°46.67'	110°48.24'	4.8	0.8W	12	103	4	0.09
220826	08:56:51.72	44°46.85'	110°48.33'	4.9	1.0W	15	102	4	0.11
220826	09:00:12.06	44°47.31'	110°48.21'	5.2	0.7W	10	219	4	0.08
220826	09:26:36.84	44°47.35'	110°48.23'	5.0	1.0W	14	217	4	0.09
220826	10:19:37.16	44°47.53'	110°48.21'	5.5	0.5W	9	226	4	0.08
220826	10:53:58.46	44°47.34'	110°48.22'	5.0	0.7W	11	220	4	0.09
220826	13:03:51.67	44°45.84'	111°12.12'	11.0	0.3	10	237	2	0.09
220826	14:34:26.65	44°47.29'	110°48.28'	5.0	0.2	6	218	4	0.06
220826	14:36:38.37	44°46.47'	110°48.62'	4.5	0.0	6	186	4	0.05
220826	14:37:13.92	44°47.60'	110°47.89'	5.2	0.5	9	229	4	0.05
220826	14:57:59.82	44°46.80'	110°48.26'	3.8	0.0	7	200	4	0.14
220826	15:06:55.57	44°47.78'	110°47.97'	5.4	-0.4	5	235	4	0.05
220826	15:42:36.11	44°46.77'	110°48.31'	4.8	2.3W	25	97	4	0.15
220826	16:12:26.45	44°45.54'	110°49.06'	2.2	-0.1	9	151	4	0.14
220826	18:06:37.02	44°48.01'	110°48.06'	5.3	0.8	9	233	4	0.07
220826	19:48:05.21	44°46.62'	110°48.54'	4.9	1.5W	17	91	4	0.13
220826	19:48:48.73	44°46.64'	110°48.55'	5.0	1.9W	17	92	3	0.14
220826	19:50:20.89	44°47.75'	110°48.10'	5.4	0.4	6	234	4	0.05
220826	21:07:50.16	44°46.76'	110°48.73'	5.0	2.1W	18	95	3	0.14
220826	21:21:33.59	44°46.61'	110°48.70'	5.2	2.1W	22	90	3	0.18
220826	21:25:49.28	44°46.92'	110°48.32'	8.8	3.0W	23	101	4	0.19
220826	21:30:44.78	44°47.09'	110°48.19'	4.3	0.3	9	211	4	0.14
220826	21:46:03.86	44°46.69'	110°48.74'	4.5	1.1W	16	93	3	0.16
220826	21:47:43.89	44°47.26'	110°48.28'	4.3	0.4	7	216	4	0.12
220826	21:48:11.77	44°45.92'	110°48.69'	2.2	-0.1	7	167	4	0.12
220826	22:10:35.20	44°47.17'	110°48.13'	4.0	0.6	8	214	4	0.14
220826	22:17:48.52	44°47.57'	110°48.07'	5.0	1.0W	13	228	4	0.12
220826	22:18:19.87	44°46.18'	110°48.54'	2.1	0.1	7	177	4	0.11
220826	22:27:18.59	44°46.62'	110°48.36'	7.4	2.3W	22	92	4	0.18
220826	22:27:52.88	44°46.80'	110°48.69'	4.7	1.0	14	100	3	0.15
220826	22:46:00.08	44°46.72'	110°48.80'	4.9	1.1W	17	93	3	0.19
220826	23:17:11.76	44°46.73'	110°48.67'	5.0	0.8W	10	194	3	0.17
220826	23:22:36.79	44°46.74'	110°48.60'	4.6	1.5W	19	101	3	0.20
220826	23:58:31.59	44°46.93'	110°48.36'	4.0	0.2	7	204	4	0.12
220827	01:06:48.96	44°46.61'	110°48.51'	4.6	1.2W	22	92	4	0.20
220827	01:13:36.41	44°44.58'	111°00.85'	6.6	0.8W	16	69	2	0.19
220827	02:02:32.90	44°46.73'	110°48.43'	4.8	1.4W	27	95	4	0.19

**Table 2. Earthquakes in the Yellowstone Region: July 1–September 30, 2022**

DATE	ORIGIN TIME	LATITUDE	LONGITUDE	DEPTH	MAG	NO	GAP	DMN	RMS
220827	02:02:56.56	44°46.81'	110°48.45'	4.8	2.0W	24	98	4	0.16
220827	02:04:06.71	44°46.84'	110°48.44'	4.9	1.7W	20	99	4	0.18
220827	02:16:23.32	44°47.29'	110°48.17'	4.8	0.7W	12	218	4	0.13
220827	02:21:52.62	44°46.65'	110°48.50'	3.9	0.1	9	193	4	0.11
220827	02:32:10.58	44°41.77'	110°11.27'	7.7	1.1	8	138	5	0.12
220827	03:05:34.31	44°46.85'	110°48.48'	4.5	1.4W	20	99	3	0.17
220827	05:35:41.51	44°47.22'	110°48.10'	4.0	0.1	9	216	4	0.12
220827	05:35:59.67	44°46.82'	110°48.84'	4.7	1.2W	18	99	3	0.16
220827	06:21:07.50	44°46.73'	110°48.48'	3.5	0.4W	14	196	4	0.15
220827	07:30:58.63	44°47.42'	110°48.22'	4.8	0.3	8	223	4	0.12
220827	07:31:03.54	44°33.71'	110°35.17'	3.9	2.1	10	206	7	0.14
220827	09:00:28.89	44°47.34'	110°48.22'	5.2	0.7W	13	220	4	0.17
220827	09:48:19.33	44°47.26'	110°48.20'	5.0	0.6W	12	156	4	0.14
220827	09:48:27.73	44°45.89'	110°48.76'	2.7	0.3	7	165	4	0.15
220827	09:48:41.67	44°46.49'	110°48.69'	3.1	-0.2	9	185	3	0.16
220827	09:54:32.25	44°47.17'	110°48.25'	4.9	0.5W	11	214	4	0.16
220827	10:39:34.25	44°47.32'	110°48.30'	4.9	0.4	10	219	4	0.14
220827	10:52:18.65	44°46.99'	110°47.82'	5.1	0.1	11	210	4	0.15
220827	11:32:20.13	44°46.92'	110°48.63'	4.5	1.3W	19	101	3	0.15
220827	11:33:00.49	44°47.71'	110°48.24'	5.1	0.7W	13	229	4	0.16
220827	11:33:23.10	44°47.14'	110°48.46'	4.1	0.4	15	211	3	0.15
220827	11:35:00.44	44°46.77'	110°48.66'	4.6	1.1W	18	100	3	0.17
220827	11:35:39.88	44°46.90'	110°48.47'	4.7	0.9W	16	102	3	0.15
220827	11:58:01.43	44°47.27'	110°48.12'	4.7	0.7W	10	218	4	0.14
220827	13:36:31.90	44°47.15'	110°48.46'	7.9	2.6W	28	85	3	0.19
220827	13:54:54.82	44°46.82'	110°48.59'	4.8	1.0W	16	101	3	0.16
220827	14:01:35.26	44°47.39'	110°48.33'	4.9	1.0W	12	221	4	0.13
220827	14:29:56.52	44°46.75'	110°48.37'	4.9	0.9W	16	198	4	0.15
220827	14:43:20.80	44°46.70'	110°48.79'	5.2	1.8W	24	93	3	0.18
220827	15:01:58.26	44°46.78'	110°48.60'	7.5	2.7W	29	96	3	0.19
220827	15:06:48.10	44°46.78'	110°48.68'	4.2	0.2	9	196	3	0.12
220827	15:14:27.51	44°45.19'	110°49.36'	1.8	0.3	8	139	4	0.33
220827	15:15:10.64	44°46.19'	110°48.61'	3.3	-0.2	8	177	4	0.12
220827	15:21:44.44	44°47.10'	110°48.42'	3.5	0.4	8	210	3	0.16
220827	15:30:33.29	44°46.85'	110°48.55'	4.9	1.0W	17	102	3	0.20
220827	15:38:50.73	44°47.28'	110°48.05'	3.8	0.3	8	218	4	0.13
220827	16:30:42.67	44°47.43'	110°48.30'	4.6	0.4	8	222	4	0.12
220827	16:31:54.79	44°46.43'	110°48.50'	4.8	1.3W	17	86	4	0.18
220827	17:10:54.70	44°46.78'	110°48.52'	4.9	1.5W	22	96	3	0.12
220827	17:15:21.64	44°46.81'	110°48.64'	5.6	1.9W	22	98	3	0.14
220827	18:40:12.91	44°46.85'	110°48.45'	4.1	1.4W	11	102	3	0.07
220827	19:54:27.56	44°47.30'	110°48.46'	5.1	0.5	6	218	3	0.04
220827	20:08:09.65	44°46.82'	110°48.64'	4.6	0.3	7	198	3	0.04
220827	20:11:11.58	44°47.71'	110°49.08'	7.3	-0.2	6	232	3	0.08
220827	20:11:34.94	44°47.30'	110°47.90'	5.3	0.7W	7	219	4	0.06

**Table 2. Earthquakes in the Yellowstone Region: July 1–September 30, 2022**

DATE	ORIGIN TIME	LATITUDE	LONGITUDE	DEPTH	MAG	NO	GAP	DMN	RMS
220827	21:26:12.97	44°47.23'	110°48.51'	4.9	0.6	8	214	3	0.04
220827	21:39:42.37	44°47.41'	110°48.47'	4.9	0.4	7	222	3	0.08
220827	22:30:21.45	44°45.60'	110°48.63'	1.8	0.7	7	160	4	0.16
220827	23:30:28.64	44°47.11'	110°48.68'	4.8	1.1W	17	107	3	0.11
220828	00:00:39.62	44°46.62'	110°48.60'	4.4	-0.4	5	191	3	0.05
220828	00:57:56.68	44°46.93'	110°48.21'	4.9	1.0W	8	205	4	0.05
220828	01:12:46.51	44°46.83'	110°48.29'	4.9	0.3	7	201	4	0.05
220828	01:24:18.08	44°46.89'	110°48.64'	4.4	0.1	7	201	3	0.06
220828	03:12:02.26	44°47.34'	110°48.55'	5.2	1.1W	16	111	3	0.13
220828	03:17:28.68	44°47.68'	110°54.50'	5.0	1.0W	17	130	5	0.11
220828	04:44:14.82	44°47.10'	110°48.31'	4.5	0.5	8	210	4	0.11
220828	06:46:49.80	44°47.40'	110°48.28'	5.1	0.6	12	221	4	0.09
220828	07:29:35.95	44°47.53'	110°48.31'	5.2	0.6W	11	226	4	0.10
220828	07:52:40.43	44°47.33'	110°48.30'	5.2	0.9W	12	114	4	0.09
220828	08:51:33.90	44°44.58'	111°00.52'	5.1	0.4W	14	62	2	0.14
220828	10:53:31.87	44°47.29'	110°48.44'	5.4	0.9W	16	111	3	0.10
220828	10:59:11.23	44°48.91'	110°48.88'	4.6	0.2	8	247	4	0.10
220828	11:40:41.32	44°45.53'	110°54.67'	2.2	0.1	8	144	6	0.10
220828	12:09:16.90	44°48.13'	110°47.82'	7.8	2.0W	20	98	5	0.14
220828	12:36:06.76	44°47.42'	110°48.15'	5.1	0.5W	10	223	4	0.04
220828	13:39:38.68	44°47.50'	110°48.23'	5.6	0.4	6	225	4	0.07
220828	14:16:18.65	44°46.79'	110°48.38'	3.9	1.1W	17	97	4	0.10
220828	15:08:18.98	44°47.52'	110°47.97'	4.9	0.9W	14	206	4	0.09
220828	15:25:55.19	44°47.21'	110°47.62'	5.4	0.7	13	218	4	0.09
220828	20:12:07.10	44°47.32'	110°48.06'	4.9	0.8W	8	220	4	0.06
220828	20:40:31.51	44°46.89'	110°48.42'	4.6	1.3W	17	102	4	0.14
220828	20:40:37.64	44°46.67'	110°48.51'	4.4	1.8W	10	101	4	0.08
220828	20:42:23.43	44°47.72'	110°48.32'	5.7	1.4W	14	220	4	0.11
220828	20:45:22.75	44°47.22'	110°48.13'	5.0	0.5	10	216	4	0.08
220828	21:00:01.32	44°46.87'	110°48.02'	3.9	0.5	9	205	4	0.09
220828	21:43:45.29	44°47.30'	110°48.01'	5.1	0.7	7	219	4	0.06
220828	21:56:51.61	44°47.35'	110°48.34'	5.1	0.6	7	220	4	0.06
220828	22:30:30.66	44°47.48'	110°48.14'	5.1	0.4	6	224	4	0.05
220828	22:36:31.09	44°47.42'	110°48.29'	5.2	0.6	7	222	4	0.06
220828	23:01:47.34	44°46.64'	110°48.01'	3.2	0.9W	13	104	4	0.10
220829	02:33:15.55	44°47.72'	110°48.23'	5.0	0.4	8	232	4	0.06
220829	02:43:16.80	44°47.31'	110°47.77'	4.7	0.1	8	221	4	0.07
220829	03:39:48.75	44°47.02'	110°48.36'	5.0	0.3	10	207	4	0.07
220829	03:42:21.26	44°46.65'	110°48.11'	4.5	1.6W	21	94	4	0.15
220829	03:45:05.03	44°46.97'	110°48.04'	4.3	0.6W	12	208	4	0.09
220829	05:46:40.14	44°47.03'	110°48.00'	7.2	2.2W	26	104	4	0.19
220829	05:59:31.97	44°46.46'	110°48.20'	4.1	0.5W	13	190	4	0.15
220829	06:02:48.90	44°46.76'	110°48.03'	4.1	0.9W	13	104	4	0.12
220829	06:36:52.56	44°46.85'	110°48.43'	4.0	0.4W	8	201	4	0.05
220829	06:50:20.80	44°47.27'	110°47.69'	5.1	0.3W	11	220	4	0.09

**Table 2. Earthquakes in the Yellowstone Region: July 1–September 30, 2022**

DATE	ORIGIN TIME	LATITUDE	LONGITUDE	DEPTH	MAG	NO	GAP	DMN	RMS
220829	07:20:19.72	44°46.33'	110°48.23'	4.5	1.2W	15	86	4	0.15
220829	07:25:38.37	44°46.44'	110°48.01'	4.0	0.8W	13	103	4	0.11
220829	08:00:37.00	44°46.30'	110°48.12'	4.3	1.2W	19	101	4	0.13
220829	08:29:23.47	44°46.55'	110°47.77'	3.0	0.3W	11	197	5	0.13
220829	09:20:21.18	44°46.74'	111°07.18'	11.6	0.5W	12	145	2	0.12
220829	10:35:34.85	44°46.16'	110°48.16'	2.0	-0.5	7	181	4	0.06
220829	10:36:06.81	44°46.39'	110°48.06'	2.1	0.2	8	189	4	0.10
220829	14:17:49.28	44°47.76'	110°48.14'	5.7	0.5	7	234	4	0.05
220829	15:24:03.64	44°47.13'	110°47.89'	5.0	0.4	8	214	4	0.06
220829	23:27:20.73	44°46.92'	110°48.22'	3.4	0.6W	10	205	4	0.15
220830	01:13:47.11	44°46.69'	110°47.70'	3.7	0.8W	14	106	5	0.13
220830	01:50:52.20	44°37.16'	110°25.65'	2.8	2.0W	25	99	7	0.20
220830	06:34:53.79	44°47.39'	110°47.95'	4.7	0.0	9	222	4	0.07
220830	08:15:02.10	44°47.15'	110°47.81'	4.8	0.6W	13	108	4	0.09
220830	08:17:03.80	44°47.27'	110°48.45'	5.0	0.6W	15	113	3	0.13
220830	13:01:25.17	44°47.09'	110°48.62'	5.1	0.6W	6	209	3	0.01
220830	14:46:35.90	44°47.15'	110°48.54'	5.2	1.1W	17	193	3	0.15
220830	15:21:34.40	44°47.48'	110°48.36'	5.2	0.8	9	224	4	0.07
220830	17:04:50.34	44°47.56'	110°48.20'	5.3	0.5	11	219	4	0.06
220830	19:24:06.43	44°46.70'	110°48.21'	3.3	-0.6	8	198	4	0.15
220830	19:24:42.53	44°46.90'	110°48.50'	4.0	0.5	10	202	3	0.12
220831	00:33:22.12	44°47.10'	110°48.17'	4.8	0.2	10	212	4	0.12
220831	00:34:02.02	44°46.34'	110°48.41'	3.4	0.0	10	183	4	0.13
220831	02:12:31.43	44°46.60'	110°48.22'	2.7	0.2	10	194	4	0.14
220831	03:35:34.87	44°46.75'	110°48.77'	5.0	1.3W	20	95	3	0.17
220831	03:50:30.42	44°46.69'	110°48.67'	5.0	0.9W	15	100	3	0.14
220831	04:03:48.08	44°51.25'	110°47.93'	9.8	1.9W	29	134	8	0.22
220831	04:09:29.81	44°46.62'	110°48.45'	4.5	1.0W	18	100	4	0.19
220831	06:21:49.70	44°47.08'	110°48.14'	5.1	0.6W	10	211	4	0.07
220831	14:10:31.72	44°47.41'	110°48.48'	5.0	0.5	8	222	3	0.10
220831	18:58:50.36	44°47.33'	110°47.98'	4.7	0.9W	16	220	4	0.18
220831	20:38:16.01	44°46.87'	110°48.68'	6.2	2.4W	29	99	3	0.18
220831	22:43:30.44	44°46.66'	110°48.36'	2.9	0.6	11	195	4	0.12
220901	01:33:00.08	44°15.85'	110°36.83'	8.8	1.6	17	89	7	0.24
220901	01:33:06.48	44°15.57'	110°36.37'	9.6	3.3W	31	83	6	0.24
220901	01:36:29.15	44°15.49'	110°36.65'	8.0	2.4W	27	68	7	0.21
220901	01:36:56.17	44°16.41'	110°38.04'	2.8	1.5	7	97	9	0.25
220901	01:37:23.25	44°15.96'	110°36.23'	10.2	1.1	12	109	6	0.26
220901	01:50:14.30	44°15.87'	110°37.70'	9.5	1.2	14	88	8	0.13
220901	01:50:30.27	44°16.32'	110°38.13'	3.4	1.4	11	99	9	0.05
220901	01:51:23.47	44°16.27'	110°38.10'	11.8	0.7	10	101	9	0.18
220901	01:51:51.99	44°17.08'	110°37.00'	12.4	1.5	11	109	7	0.17
220901	01:53:03.50	44°16.03'	110°36.45'	11.5	1.0	9	98	6	0.18
220901	02:04:39.09	44°16.21'	110°37.45'	7.4	0.9	15	102	8	0.13
220901	02:14:28.87	44°16.06'	110°37.69'	8.0	0.9	11	104	8	0.22



**Table 2. Earthquakes in the Yellowstone Region: July 1–September 30, 2022**

DATE	ORIGIN TIME	LATITUDE	LONGITUDE	DEPTH	MAG	NO	GAP	DMN	RMS
220901	02:51:49.39	44°15.68'	110°37.54'	9.6	0.8	12	91	8	0.12
220901	09:31:51.56	44°47.47'	110°48.70'	5.1	0.0	11	223	3	0.08
220901	10:38:16.42	44°47.21'	110°48.67'	5.0	0.5W	10	213	3	0.10
220901	14:18:57.49	44°44.82'	110°53.19'	6.7	0.1	9	112	5	0.08
220901	16:42:29.96	44°50.90'	110°48.09'	4.8	0.9	15	141	8	0.12
220901	17:37:49.01	44°46.09'	110°49.41'	4.1	0.2	10	160	3	0.15
220902	00:49:45.06	44°46.88'	110°48.75'	3.4	0.6	13	199	3	0.13
220902	03:48:17.11	44°46.44'	110°48.46'	4.8	1.1W	21	86	4	0.19
220902	04:14:09.40	44°47.81'	110°56.90'	5.8	0.4	10	208	6	0.09
220902	07:31:40.61	44°34.40'	110°56.86'	12.4	0.2	11	141	9	0.11
220902	11:30:36.44	44°35.44'	110°56.09'	10.9	0.3	14	193	8	0.12
220902	15:56:22.51	44°15.53'	110°36.58'	10.0	2.1W	25	68	7	0.25
220902	16:24:20.85	44°16.21'	110°36.84'	7.9	1.0	9	103	7	0.13
220902	17:40:12.67	44°16.18'	110°36.77'	7.5	1.8W	18	87	7	0.18
220902	20:15:15.83	44°46.80'	110°48.83'	4.2	0.5	11	195	3	0.14
220903	03:18:28.18	44°46.69'	110°48.75'	4.7	1.0W	18	99	3	0.17
220903	03:27:03.82	44°46.91'	110°48.45'	6.3	2.3W	26	100	3	0.17
220903	03:28:27.55	44°46.80'	110°48.62'	6.0	2.0W	26	97	3	0.17
220903	03:38:39.70	44°47.12'	110°48.33'	4.9	0.5	12	211	4	0.12
220903	03:56:51.27	44°47.21'	110°48.33'	4.9	0.8W	13	215	4	0.14
220903	04:05:57.41	44°47.07'	110°48.19'	5.3	0.2	8	210	4	0.08
220903	04:45:49.39	44°46.74'	110°48.83'	4.9	1.1W	15	99	3	0.14
220903	05:44:07.93	44°46.98'	110°48.76'	4.6	0.6W	12	203	3	0.14
220903	11:53:41.39	44°45.98'	111°06.64'	10.6	0.3W	14	109	3	0.16
220903	15:53:25.57	44°47.10'	110°48.27'	3.4	0.5	9	211	4	0.11
220903	17:00:13.10	44°47.39'	110°48.52'	5.6	0.4	13	220	3	0.16
220903	20:35:25.27	44°48.06'	110°48.11'	5.5	0.2	6	239	4	0.05
220904	02:29:59.97	44°21.70'	110°52.44'	3.7	0.9	5	221	10	0.01
220904	07:44:20.22	44°47.43'	110°48.17'	3.5	0.2	7	223	4	0.13
220905	01:28:06.11	44°44.38'	111°05.01'	8.5	1.2W	17	86	7	0.18
220905	01:52:36.05	44°34.88'	110°40.81'	4.2	-0.1	8	174	4	0.21
220905	01:54:59.89	44°35.32'	110°40.50'	7.1	2.0W	25	56	3	0.21
220905	01:55:12.32	44°35.31'	110°40.51'	5.4	1.0	15	99	3	0.19
220905	01:57:01.51	44°35.16'	110°40.51'	4.7	0.4	15	172	3	0.25
220905	01:57:24.48	44°36.38'	110°40.59'	3.5	0.8W	15	117	3	0.15
220905	01:57:55.89	44°34.88'	110°40.24'	5.4	0.8	15	127	3	0.26
220905	02:03:34.50	44°35.08'	110°40.29'	0.4	1.5W	12	72	3	0.24
220905	02:06:49.20	44°36.08'	110°40.62'	4.6	0.6	12	83	3	0.17
220905	02:10:41.55	44°35.39'	110°40.61'	7.1	2.6W	32	54	3	0.17
220905	02:14:44.81	44°35.41'	110°40.18'	5.5	1.0W	23	62	3	0.20
220905	02:14:53.82	44°32.53'	110°40.31'	10.1	2.3	10	269	7	0.13
220905	02:15:59.33	44°35.35'	110°40.79'	6.0	1.4W	19	67	3	0.15
220905	02:18:45.76	44°34.90'	110°40.19'	5.0	--	10	66	3	0.10
220905	02:18:48.56	44°36.31'	110°39.48'	3.5	1.4W	8	113	1	0.30
220905	02:19:02.63	44°35.09'	110°40.64'	5.4	1.4	15	172	4	0.27

**Table 2. Earthquakes in the Yellowstone Region: July 1–September 30, 2022**

DATE	ORIGIN TIME	LATITUDE	LONGITUDE	DEPTH	MAG	NO	GAP	DMN	RMS
220905	02:28:27.05	44°35.27'	110°40.53'	6.1	1.6W	25	57	3	0.22
220905	04:59:16.78	44°34.97'	110°40.32'	5.6	1.4W	20	68	3	0.20
220905	04:59:29.74	44°34.49'	110°40.51'	4.1	2.0	14	70	4	0.18
220905	04:59:53.46	44°34.24'	110°40.55'	4.0	--	13	70	5	0.19
220905	04:59:54.47	44°34.70'	110°40.43'	2.0	2.3W	15	70	4	0.21
220905	05:01:10.11	44°35.22'	110°40.40'	5.3	1.7W	26	57	3	0.21
220905	05:01:47.64	44°35.13'	110°40.37'	6.0	1.5W	15	125	3	0.18
220905	05:02:10.24	44°35.79'	110°40.05'	4.9	1.3	13	180	2	0.17
220905	05:02:34.06	44°35.57'	110°40.11'	4.7	0.2	19	98	2	0.19
220905	05:02:49.72	44°37.10'	110°39.05'	-1.0	0.6	11	128	2	0.20
220905	05:03:21.55	44°35.28'	110°40.55'	4.8	1.0W	20	65	3	0.18
220905	05:03:47.23	44°34.91'	110°40.43'	5.4	0.2	18	126	4	0.23
220905	05:04:36.11	44°35.38'	110°40.92'	5.6	-0.1	15	121	4	0.23
220905	05:04:43.58	44°35.43'	110°41.22'	5.1	0.7	13	154	4	0.22
220905	05:05:09.27	44°35.10'	110°40.39'	5.6	0.3	20	64	3	0.25
220905	05:06:29.25	44°35.31'	110°40.67'	5.1	1.2W	16	104	3	0.19
220905	05:07:31.90	44°35.21'	110°40.55'	5.7	1.4W	26	64	3	0.21
220905	05:08:56.39	44°35.54'	110°40.35'	5.9	1.4W	19	100	3	0.18
220905	05:09:40.18	44°35.87'	110°41.06'	2.0	-0.1	9	206	3	0.11
220905	05:12:26.92	44°35.08'	110°40.84'	5.5	1.9W	23	67	4	0.13
220905	05:15:14.06	44°35.18'	110°40.48'	6.1	1.7W	21	64	3	0.16
220905	05:16:57.61	44°34.99'	110°40.69'	5.3	1.6W	22	66	4	0.11
220905	05:17:16.00	44°34.98'	110°40.46'	7.4*	2.0W	14	93	17	0.15
220905	05:17:31.12	44°35.30'	110°40.71'	5.5	1.6	11	99	3	0.10
220905	05:21:55.04	44°35.18'	110°39.93'	7.1	0.2	15	121	3	0.21
220905	05:22:28.46	44°35.49'	110°41.84'	3.0	0.3	8	86	5	0.27
220905	05:25:13.30	44°36.24'	110°41.94'	1.3	0.4	9	127	4	0.13
220905	05:25:26.63	44°34.13'	110°36.15'	8.8	--	5	255	5	0.08
220905	13:21:34.49	44°47.51'	110°48.29'	6.0	0.4	11	226	4	0.09
220905	23:40:11.17	44°24.09'	110°41.97'	2.5	1.0	7	116	10	0.10
220906	10:00:00.34	44°47.15'	110°48.28'	5.2	1.0W	15	108	4	0.12
220906	11:01:30.51	44°46.45'	111°07.01'	13.1	-0.7	7	130	3	0.10
220906	11:01:35.64	44°46.55'	111°07.59'	13.8	0.3	9	150	3	0.11
220906	13:02:29.26	44°46.73'	111°07.64'	13.2	0.7W	13	159	3	0.12
220906	13:45:12.77	44°46.55'	111°06.94'	11.8	0.6W	12	130	2	0.11
220906	15:18:36.43	44°46.32'	111°07.13'	11.8	1.1W	17	114	3	0.12
220906	15:19:22.32	44°46.75'	111°07.19'	13.1	0.0	7	146	2	0.09
220906	15:35:56.89	44°46.98'	111°07.24'	10.2	-0.1	10	157	2	0.10
220907	03:23:18.96	44°46.85'	111°07.63'	11.9	0.5	12	164	2	0.11
220907	05:43:55.14	44°46.60'	111°07.17'	12.9	-0.7	6	201	7	0.07
220907	05:44:01.57	44°47.22'	111°07.37'	11.7	-0.2	8	213	7	0.07
220907	13:00:07.44	44°46.10'	111°07.58'	11.3	0.0	12	135	3	0.22
220907	21:16:19.21	44°20.92'	110°49.58'	2.0	1.8W	15	104	9	0.29
220907	23:55:50.30	44°33.72'	110°36.28'	5.9	0.8	7	193	6	0.05
220908	05:15:24.40	44°46.94'	110°48.33'	7.8	2.0W	25	85	4	0.19

**Table 2. Earthquakes in the Yellowstone Region: July 1–September 30, 2022**

DATE	ORIGIN TIME	LATITUDE	LONGITUDE	DEPTH	MAG	NO	GAP	DMN	RMS
220908	07:27:44.00	44°46.70'	110°48.48'	4.7	0.9W	13	101	4	0.14
220908	07:39:45.31	44°47.29'	110°48.09'	4.0*	0.6W	8	230	13	0.11
220908	10:31:31.87	44°47.01'	110°48.30'	6.0	0.4W	8	208	4	0.10
220908	11:02:32.78	44°47.60'	110°48.04'	6.3	0.8W	11	220	4	0.13
220908	11:16:46.13	44°47.68'	110°48.26'	6.5	0.1	9	229	4	0.08
220908	11:29:42.33	44°47.31'	110°47.83'	5.5	0.3	6	220	4	0.07
220908	15:33:18.54	44°47.11'	110°48.44'	5.2	0.5	5	274	3	0.07
220908	16:41:49.82	44°46.75'	111°07.36'	9.6	0.6	10	205	7	0.14
220908	20:58:36.98	44°46.83'	110°48.24'	3.4	0.7	9	202	4	0.14
220909	02:53:59.53	44°47.17'	110°48.38'	5.1	0.7W	10	109	3	0.07
220909	03:25:22.55	44°47.06'	110°48.88'	5.8	1.3W	14	100	3	0.15
220909	04:23:12.35	44°47.64'	110°48.57'	5.6	0.5	8	230	3	0.10
220909	04:53:57.17	44°47.68'	110°48.39'	6.0	0.1	6	232	4	0.06
220909	06:40:20.72	44°47.88'	110°48.52'	6.4	0.2	6	236	3	0.04
220909	08:55:58.00	44°46.38'	111°07.26'	11.7	-0.1	7	136	3	0.17
220909	10:00:30.41	44°45.69'	111°06.75'	10.1	0.5W	13	107	4	0.15
220909	13:19:05.25	44°43.95'	110°39.71'	3.9	--	6	241	2	0.08
220910	01:39:22.58	44°35.44'	110°22.37'	3.5	1.5W	12	102	4	0.14
220910	01:39:44.05	44°35.79'	110°22.57'	0.7	0.1	9	175	5	0.22
220910	01:39:55.85	44°35.38'	110°22.55'	2.0	0.1	8	172	4	0.08
220910	01:42:14.20	44°35.62'	110°22.57'	4.3	1.9W	18	97	4	0.16
220910	01:42:22.88	44°35.86'	110°21.79'	2.1	1.6	7	150	5	0.23
220910	01:43:24.12	44°35.44'	110°22.43'	3.2	1.8W	14	104	4	0.12
220910	01:43:55.54	44°35.37'	110°21.90'	1.8	1.1	9	104	4	0.17
220910	01:45:19.31	44°35.98'	110°21.37'	2.8	1.0	8	110	6	0.10
220910	01:48:30.70	44°35.49'	110°22.67'	4.4	1.7W	11	103	4	0.09
220910	01:50:15.08	44°35.42'	110°21.98'	1.9	0.9	10	104	4	0.19
220910	01:51:59.92	44°35.63'	110°22.38'	4.7	1.8W	14	105	4	0.10
220910	01:52:20.49	44°35.54'	110°21.89'	3.0	2.0W	13	104	5	0.16
220910	02:00:36.97	44°35.45'	110°22.78'	5.0	0.3	8	116	4	0.10
220910	02:16:16.99	44°36.06'	110°21.88'	4.6	0.7	10	183	5	0.07
220910	03:50:01.45	44°37.72'	110°20.55'	5.8	1.5W	11	132	9	0.05
220910	07:04:49.99	44°45.69'	111°06.65'	10.3	-0.3	11	104	4	0.15
220912	00:27:56.40	44°47.69'	110°47.81'	7.8	2.9W	22	146	4	0.14
220912	01:38:21.83	44°47.89'	110°47.63'	8.0	2.5W	20	105	5	0.16
220913	03:16:32.92	44°46.88'	110°48.70'	4.9	0.9W	18	100	3	0.17
220913	09:19:56.87	44°41.58'	110°00.69'	13.8	1.1	12	100	8	0.19
220913	10:32:57.80	44°47.32'	110°48.36'	4.8	0.4W	9	218	4	0.09
220913	10:37:16.23	44°46.48'	110°48.67'	5.1	0.8W	18	99	3	0.17
220913	10:54:46.99	44°47.39'	110°48.12'	5.2	0.2	13	222	4	0.14
220913	21:33:48.50	44°45.59'	111°06.44'	12.3	0.2	10	179	7	0.21
220913	21:35:36.14	44°44.66'	111°06.35'	10.7	0.3	12	84	6	0.17
220914	04:27:06.40	44°47.16'	110°48.35'	4.8	0.3	15	212	4	0.15
220914	06:06:42.72	44°46.90'	110°47.96'	4.0	0.5W	12	206	4	0.14
220914	08:11:11.26	44°47.44'	110°48.24'	5.9	0.7W	7	224	4	0.06

**Table 2. Earthquakes in the Yellowstone Region: July 1–September 30, 2022**

DATE	ORIGIN TIME	LATITUDE	LONGITUDE	DEPTH	MAG	NO	GAP	DMN	RMS
220915	04:18:49.65	44°47.86'	110°31.63'	7.2	2.0W	27	93	9	0.17
220915	10:43:32.05	44°44.74'	111°09.51'	15.2	0.4	15	70	3	0.10
220915	13:31:26.66	44°46.94'	110°48.29'	5.8	0.4	6	205	4	0.01
220915	13:34:02.19	44°47.33'	110°48.16'	10.4	2.3W	27	85	4	0.21
220915	13:36:59.67	44°47.63'	110°48.13'	6.5	0.6	9	230	4	0.08
220915	13:41:46.39	44°47.02'	110°48.22'	8.1	2.0W	21	58	4	0.17
220915	13:42:03.28	44°46.21'	110°47.84'	2.6	0.8	6	186	5	0.09
220915	18:01:34.49	44°47.62'	110°47.79'	6.2	-0.1	7	230	4	0.11
220915	18:40:55.89	44°46.96'	110°48.14'	5.2	0.4	9	207	4	0.14
220915	19:49:45.73	44°46.66'	110°48.58'	5.8	1.0	19	92	3	0.15
220916	00:46:20.72	44°47.24'	110°48.42'	6.1	0.3	10	216	3	0.10
220916	07:59:27.94	44°46.76'	110°48.64'	5.4	1.2W	19	101	3	0.16
220916	12:27:00.34	44°33.87'	110°44.65'	5.5	1.3W	16	78	9	0.09
220916	12:52:44.58	44°33.98'	110°44.54'	5.7	0.8W	19	78	9	0.14
220917	05:07:15.65	44°47.22'	110°48.35'	7.9	1.9W	27	58	4	0.18
220917	05:25:46.59	44°47.10'	110°48.01'	6.2	0.7W	11	212	4	0.13
220917	09:12:09.37	44°46.75'	110°48.16'	7.5	2.2W	26	96	4	0.20
220917	09:37:04.07	44°55.83'	110°51.02'	19.7	0.4	6	297	16	0.09
220917	09:57:37.13	44°47.12'	110°48.44'	8.1	1.7W	24	100	3	0.20
220917	10:57:35.46	44°47.55'	110°48.21'	5.7	0.2	10	227	4	0.09
220917	15:57:54.83	44°47.46'	110°48.05'	5.2	0.3	7	224	4	0.08
220917	19:32:37.12	44°44.39'	111°04.32'	12.6	0.9	7	149	6	0.08
220917	21:20:20.93	44°48.18'	110°48.00'	8.1	1.1W	11	214	4	0.10
220917	22:37:29.45	44°47.63'	110°48.14'	6.3	0.2	6	230	4	0.07
220917	23:13:58.21	44°47.18'	110°48.49'	8.1	2.3W	27	100	3	0.18
220917	23:21:28.54	44°46.70'	110°48.29'	4.3	0.3	8	196	4	0.13
220917	23:31:50.99	44°47.08'	110°48.57'	4.9	0.8W	13	106	3	0.14
220917	23:42:04.45	44°45.05'	110°57.94'	6.6	0.6	13	138	3	0.14
220918	00:35:14.08	44°47.01'	110°48.63'	4.7	0.9W	13	104	3	0.12
220918	01:15:51.12	44°47.04'	110°48.48'	6.7	2.0W	22	99	3	0.17
220918	01:43:15.80	44°47.74'	110°48.50'	6.5	0.6	11	209	3	0.11
220918	02:14:51.99	44°47.06'	110°48.61'	5.2	0.7	12	207	3	0.14
220918	02:27:40.13	44°47.44'	110°48.41'	6.7	0.9W	13	223	3	0.15
220918	02:41:25.32	44°47.14'	110°48.61'	5.8	0.9W	14	210	3	0.15
220918	02:58:48.92	44°47.29'	110°48.78'	5.3	1.0W	15	112	3	0.13
220918	03:23:58.21	44°46.98'	110°48.32'	5.0	0.6W	13	206	4	0.14
220918	03:25:15.46	44°47.24'	110°48.39'	5.9	0.2	8	216	3	0.08
220918	03:27:05.45	44°46.89'	110°48.31'	5.1	0.4	10	204	4	0.14
220918	04:29:06.05	44°46.88'	110°48.33'	4.9	0.2	10	203	4	0.16
220918	04:29:19.69	44°46.89'	110°48.87'	5.1	1.2W	15	100	3	0.18
220918	04:33:39.54	44°46.96'	110°48.75'	6.4	1.3W	19	99	3	0.16
220918	04:49:15.27	44°47.52'	110°47.96'	5.2	-0.3	11	226	4	0.17
220918	04:49:36.54	44°47.24'	110°48.02'	5.3	0.0	12	217	4	0.15
220918	04:49:47.93	44°45.96'	110°48.53'	3.2	-0.1	11	171	4	0.13
220918	07:23:16.43	44°46.74'	110°48.01'	4.4	1.7W	26	97	4	0.19

**Table 2. Earthquakes in the Yellowstone Region: July 1–September 30, 2022**

DATE	ORIGIN TIME	LATITUDE	LONGITUDE	DEPTH	MAG	NO	GAP	DMN	RMS
220918	07:32:57.25	44°47.35'	110°48.09'	5.9	0.2	9	221	4	0.10
220918	09:06:51.00	44°46.63'	110°48.46'	5.0	1.4W	22	100	4	0.18
220918	09:17:57.80	44°46.67'	110°48.37'	7.9	1.4W	16	101	4	0.16
220918	09:35:07.83	44°46.60'	110°48.27'	5.0	0.7W	15	102	4	0.14
220918	10:07:09.33	44°46.69'	110°48.43'	5.0	0.6	16	101	4	0.17
220918	10:07:26.41	44°46.68'	110°48.41'	8.0	1.9W	27	94	4	0.20
220918	10:13:13.55	44°46.66'	110°48.52'	4.9	1.1W	20	100	4	0.16
220918	11:37:28.21	44°46.39'	110°48.49'	4.9	1.0W	13	100	4	0.18
220918	11:49:51.49	44°46.74'	110°48.26'	4.9	1.2W	16	199	4	0.16
220918	12:34:54.82	44°46.94'	110°48.76'	7.5	1.4W	18	99	3	0.20
220918	12:50:06.70	44°45.84'	110°57.37'	7.0	0.5	14	169	4	0.17
220918	12:55:19.68	44°47.35'	110°48.58'	10.8	3.9W	40	59	3	0.20
220918	12:58:59.67	44°46.59'	110°48.26'	5.1	1.7W	24	92	4	0.14
220918	12:59:21.70	44°47.08'	110°48.12'	5.9	0.9	12	211	4	0.11
220918	13:00:45.01	44°46.78'	110°48.41'	5.0	1.9W	24	97	4	0.16
220918	13:01:23.92	44°46.85'	110°48.83'	5.4	1.4	13	100	3	0.17
220918	13:01:57.19	44°47.04'	110°49.09'	5.2	1.4W	22	100	3	0.17
220918	13:02:37.13	44°47.42'	110°47.90'	5.4	1.0W	14	219	4	0.13
220918	13:03:03.83	44°47.27'	110°48.37'	6.8	0.8	9	216	4	0.13
220918	13:03:42.83	44°47.21'	110°48.05'	5.4	1.3W	19	110	4	0.23
220918	13:04:57.77	44°46.66'	110°48.24'	7.1	1.8W	26	93	4	0.20
220918	13:08:01.86	44°47.12'	110°48.09'	5.0	0.4	9	213	4	0.08
220918	13:08:36.57	44°47.86'	110°48.27'	5.7	-0.1	7	236	4	0.07
220918	13:10:03.74	44°46.65'	110°48.50'	3.9	0.1	9	193	4	0.08
220918	13:10:23.93	44°45.33'	110°52.33'	-1.7	0.2	7	112	4	0.06
220918	13:10:36.96	44°47.06'	110°48.03'	5.0	-0.4	5	211	4	0.03
220918	13:10:58.39	44°47.08'	110°48.05'	6.6	0.4	6	212	4	0.14
220918	13:11:52.69	44°46.55'	110°48.07'	4.5	-0.1	6	194	4	0.04
220918	13:12:44.15	44°43.98'	110°52.16'	-1.5	-0.3	6	114	6	0.04
220918	13:16:07.63	44°47.25'	110°48.59'	5.2	0.4	8	215	3	0.09
220918	13:16:41.72	44°47.27'	110°48.08'	5.1	0.8	8	218	4	0.09
220918	13:17:13.05	44°46.34'	110°48.34'	4.9	--	6	185	4	0.09
220918	13:18:56.44	44°47.75'	110°47.66'	5.5	1.7W	22	111	5	0.18
220918	13:20:04.87	44°47.40'	110°48.28'	6.3	-0.2	7	221	4	0.08
220918	13:20:10.11	44°48.96'	110°48.69'	10.9	0.2	5	270	4	0.07
220918	13:20:24.31	44°46.50'	110°48.60'	5.4	0.8	8	187	4	0.08
220918	13:23:54.88	44°46.81'	110°48.64'	4.9	1.7W	20	97	3	0.17
220918	13:24:13.13	44°46.31'	110°48.21'	2.1	0.2	6	185	4	0.07
220918	13:24:52.15	44°48.49'	110°48.24'	7.9	0.7	6	256	4	0.05
220918	13:31:30.84	44°46.80'	110°48.43'	7.9	2.4W	27	97	4	0.19
220918	13:32:35.85	44°46.95'	110°48.40'	5.1	1.4W	14	103	4	0.13
220918	13:33:10.39	44°47.61'	110°47.90'	5.3	0.9	8	120	4	0.13
220918	13:33:46.77	44°46.89'	110°48.29'	4.3	0.5	15	103	4	0.10
220918	13:34:01.99	44°46.94'	110°48.02'	3.5	0.2	9	207	4	0.12
220918	13:34:15.34	44°47.34'	110°48.13'	1.7	0.7	7	219	4	0.12

**Table 2. Earthquakes in the Yellowstone Region: July 1–September 30, 2022**

DATE	ORIGIN TIME	LATITUDE	LONGITUDE	DEPTH	MAG	NO	GAP	DMN	RMS
220918	13:34:30.65	44°46.85'	110°48.66'	3.9	0.9W	13	199	3	0.14
220918	13:39:07.68	44°46.96'	110°47.92'	4.9	0.3	9	209	4	0.15
220918	13:39:19.56	44°47.10'	110°48.15'	5.0	0.6	10	212	4	0.13
220918	13:43:33.26	44°46.96'	110°48.40'	5.1	0.7	14	103	4	0.15
220918	13:43:40.65	44°46.58'	110°48.33'	4.7	0.7	8	102	4	0.08
220918	13:44:08.83	44°46.35'	110°48.04'	2.1	0.1	11	189	4	0.12
220918	13:45:42.47	44°46.83'	110°48.00'	5.0	0.0	10	203	4	0.16
220918	13:46:13.22	44°46.66'	110°48.10'	3.8	0.2	11	197	4	0.10
220918	13:47:15.64	44°46.66'	110°48.39'	5.1	0.7W	14	195	4	0.20
220918	13:48:31.02	44°47.91'	110°48.09'	6.0	--	7	232	4	0.04
220918	13:48:32.49	44°46.84'	110°48.59'	4.8	1.1W	15	101	3	0.14
220918	13:55:42.34	44°46.69'	110°48.44'	4.7	0.6W	11	195	4	0.17
220918	14:05:22.99	44°46.72'	110°48.82'	4.8	0.8	15	99	3	0.13
220918	14:07:24.85	44°46.43'	110°48.19'	3.7	0.5	11	189	4	0.15
220918	14:10:44.86	44°45.70'	110°48.50'	2.2	-0.3	9	164	4	0.12
220918	14:10:57.50	44°46.66'	110°48.31'	4.7	0.8	10	195	4	0.15
220918	14:11:26.83	44°46.50'	110°48.24'	3.6	0.2	9	191	4	0.12
220918	14:11:58.48	44°48.32'	110°49.14'	4.4	0.7	6	240	3	0.09
220918	14:14:17.08	44°48.37'	110°46.33'	6.5	--	5	248	7	0.01
220918	14:14:18.60	44°46.67'	110°48.34'	4.9	0.8W	15	102	4	0.14
220918	14:17:03.39	44°45.87'	110°48.41'	2.1	-0.4	8	170	4	0.14
220918	14:17:19.15	44°47.26'	110°48.29'	5.3	1.0	10	216	4	0.12
220918	14:19:50.49	44°46.87'	110°48.27'	5.0	0.4	9	203	4	0.12
220918	14:20:38.96	44°47.33'	110°48.12'	4.7	0.0	9	219	4	0.13
220918	14:20:53.44	44°46.47'	110°48.41'	2.8	0.7	9	187	4	0.11
220918	14:25:14.18	44°46.80'	110°48.57'	7.0	1.7W	24	97	3	0.20
220918	14:43:23.13	44°47.05'	110°48.52'	5.2	0.9W	16	105	3	0.16
220918	14:44:12.28	44°46.53'	110°48.78'	4.9	1.0W	19	99	3	0.17
220918	14:44:38.61	44°46.94'	110°48.00'	5.2	0.3	10	207	4	0.16
220918	14:57:37.54	44°46.66'	110°48.42'	4.1	0.6	12	194	4	0.13
220918	15:07:00.78	44°46.82'	110°48.16'	9.2	2.1W	27	97	4	0.22
220918	15:11:01.96	44°46.12'	110°48.72'	3.3	-0.6	8	173	4	0.19
220918	15:11:16.69	44°47.06'	110°48.12'	4.9	0.5	10	211	4	0.11
220918	15:11:30.42	44°46.35'	110°47.59'	2.0	-0.2	8	193	5	0.13
220918	15:16:52.58	44°46.69'	110°48.80'	4.9	1.4W	21	93	3	0.17
220918	15:17:25.44	44°46.63'	110°48.73'	5.0	1.0W	18	99	3	0.15
220918	15:17:56.77	44°46.68'	110°48.76'	5.0	1.8W	24	93	3	0.17
220918	15:31:17.29	44°47.07'	110°48.79'	4.9	0.8	14	105	3	0.14
220918	15:34:21.02	44°47.15'	110°48.43'	5.4	0.3	9	212	3	0.07
220918	15:36:42.75	44°46.88'	110°48.54'	4.7	1.4W	20	98	3	0.15
220918	15:43:43.11	44°47.02'	110°48.24'	4.8	0.3	10	209	4	0.12
220918	15:51:34.79	44°47.56'	110°48.12'	6.5	0.8W	13	228	4	0.15
220918	15:52:31.82	44°47.14'	110°48.49'	5.1	0.9W	16	108	3	0.16
220918	15:55:31.64	44°46.55'	110°47.92'	3.2	0.6	12	196	4	0.19
220918	15:58:41.19	44°46.80'	110°48.19'	4.2	0.3	10	202	4	0.16

**Table 2. Earthquakes in the Yellowstone Region: July 1–September 30, 2022**

DATE	ORIGIN TIME	LATITUDE	LONGITUDE	DEPTH	MAG	NO	GAP	DMN	RMS
220918	16:07:19.87	44°46.87'	110°48.47'	4.1	0.6	12	201	3	0.14
220918	16:11:25.66	44°46.52'	110°48.67'	4.9	0.8W	14	99	3	0.12
220918	16:18:56.92	44°46.70'	110°48.75'	6.0	2.0W	23	93	3	0.19
220918	16:29:17.94	44°47.28'	110°48.23'	5.2	0.9W	13	218	4	0.13
220918	16:34:54.80	44°47.08'	110°48.39'	5.3	0.2	12	210	4	0.15
220918	16:35:14.07	44°46.66'	110°47.71'	4.1	0.5	11	200	5	0.16
220918	16:42:41.83	44°47.19'	110°48.33'	5.2	1.1W	16	109	4	0.10
220918	16:42:47.50	44°46.65'	110°47.70'	2.2	0.5	8	200	5	0.13
220918	16:53:30.28	44°46.77'	110°48.49'	5.1	-0.1	9	197	3	0.09
220918	16:53:46.76	44°46.95'	110°48.37'	4.7	0.4	9	205	4	0.11
220918	16:57:26.66	44°45.92'	110°46.69'	-0.6	-0.7	6	190	6	0.15
220918	16:57:51.29	44°46.95'	110°48.05'	6.0	0.2	7	207	4	0.07
220918	17:07:25.24	44°46.97'	110°48.57'	4.5	-0.6	6	204	3	0.05
220918	17:07:29.49	44°47.37'	110°48.11'	5.1	0.8W	10	222	4	0.09
220918	17:14:38.61	44°46.86'	110°48.77'	5.5	1.5W	18	98	3	0.17
220918	17:20:52.69	44°47.51'	110°48.07'	4.8	0.2	6	226	4	0.09
220918	17:36:11.77	44°46.64'	110°48.67'	8.0	1.7W	19	91	3	0.19
220918	17:38:00.52	44°47.11'	110°48.67'	4.9	0.7	13	107	3	0.10
220918	17:53:53.63	44°47.48'	110°47.99'	4.7	0.4	10	225	4	0.09
220918	18:05:03.05	44°46.67'	110°48.73'	5.1	1.3W	19	93	3	0.14
220918	18:07:18.82	44°47.02'	110°47.81'	2.1	0.0	9	211	4	0.17
220918	18:07:29.42	44°47.33'	110°48.41'	5.1	0.5	7	218	3	0.04
220918	18:07:48.54	44°47.49'	110°47.88'	5.7	0.0	6	225	4	0.04
220918	18:11:12.87	44°46.85'	110°48.50'	5.2	1.7W	23	98	3	0.18
220918	18:23:17.98	44°47.59'	110°48.04'	5.4	0.7W	13	208	4	0.06
220918	18:30:11.51	44°47.47'	110°48.14'	6.1	0.4	7	224	4	0.07
220918	18:32:42.81	44°46.41'	110°48.49'	4.2	-0.4	6	185	4	0.04
220918	18:32:48.05	44°47.13'	110°48.46'	5.7	0.5	7	211	3	0.04
220918	18:34:12.45	44°46.66'	110°47.86'	5.0	0.9W	13	105	4	0.15
220918	18:35:18.24	44°47.14'	110°48.17'	5.1	-0.1	8	213	4	0.09
220918	18:45:37.20	44°48.29'	110°47.62'	0.0	-0.6	6	249	5	0.03
220918	18:45:57.08	44°47.32'	110°48.35'	6.3	0.3	11	204	4	0.14
220918	18:46:25.19	44°46.61'	110°53.35'	-0.8	-0.7	5	168	3	0.25
220918	19:01:30.24	44°47.01'	110°48.59'	9.7	2.5W	25	99	3	0.18
220918	19:08:29.32	44°47.13'	110°48.51'	5.9	0.9W	15	211	3	0.17
220918	19:08:56.97	44°46.93'	110°48.66'	5.6	1.4W	19	101	3	0.17
220918	19:26:17.99	44°46.98'	110°47.98'	5.2	0.1	9	209	4	0.11
220918	20:29:25.08	44°47.37'	110°47.99'	5.3	0.1	9	221	4	0.12
220918	20:29:31.81	44°46.29'	110°48.21'	2.6	-0.1	8	185	4	0.12
220918	20:40:55.90	44°46.71'	110°48.16'	4.6	1.8W	23	95	4	0.18
220918	20:41:20.25	44°46.64'	110°48.06'	4.2	1.1	14	103	4	0.14
220918	20:45:16.54	44°47.32'	110°47.92'	4.4	1.1W	17	196	4	0.17
220918	20:45:21.82	44°44.98'	110°49.66'	4.0	1.0	10	162	5	0.20
220918	20:45:43.14	44°47.34'	110°48.34'	4.9	0.6	14	115	4	0.15
220918	20:52:08.58	44°47.41'	110°48.08'	5.0	0.5	12	223	4	0.12

**Table 2. Earthquakes in the Yellowstone Region: July 1–September 30, 2022**

DATE	ORIGIN TIME	LATITUDE	LONGITUDE	DEPTH	MAG	NO	GAP	DMN	RMS
220918	21:01:19.47	44°46.52'	110°47.83'	2.6	0.3	10	196	4	0.13
220918	21:01:23.11	44°46.31'	110°48.32'	2.1	0.6	10	184	4	0.15
220918	21:03:46.42	44°46.54'	110°48.67'	3.9	0.6W	11	187	3	0.14
220918	21:03:55.06	44°46.00'	110°48.37'	2.1	0.2	11	174	4	0.07
220918	21:08:37.22	44°46.88'	110°48.92'	4.9	1.2W	19	99	3	0.17
220918	21:09:41.36	44°47.18'	110°48.27'	4.6	0.6	12	214	4	0.16
220918	21:18:38.57	44°46.67'	110°48.47'	4.2	0.8W	12	194	4	0.15
220918	21:41:28.91	44°47.05'	110°48.29'	5.1	0.7	11	209	4	0.15
220918	21:54:34.28	44°47.24'	110°48.76'	5.9	2.3W	21	101	3	0.18
220918	22:06:01.01	44°46.99'	110°48.80'	4.9	1.0W	13	102	3	0.15
220918	22:07:01.97	44°47.59'	110°48.41'	5.1	0.6	10	228	3	0.12
220918	22:13:18.10	44°46.98'	110°47.68'	3.5	0.4	8	211	4	0.13
220918	22:16:03.74	44°46.63'	110°48.38'	4.6	1.2W	17	92	4	0.18
220918	22:24:11.84	44°48.63'	110°47.66'	0.6	0.6	9	247	5	0.22
220918	22:26:53.50	44°46.89'	110°48.67'	4.8	1.4W	17	101	3	0.16
220918	22:34:23.90	44°46.48'	110°48.42'	6.1	1.7W	15	88	4	0.19
220918	22:36:20.07	44°47.10'	110°48.08'	5.1	1.1W	14	212	4	0.17
220918	23:05:40.50	44°46.42'	110°42.63'	2.2	-0.1	9	194	5	0.42
220918	23:06:10.31	44°45.07'	110°44.22'	2.0	0.7	10	195	4	0.21
220918	23:06:15.51	44°46.45'	110°42.54'	3.3	-0.2	8	192	7	0.38
220918	23:08:38.13	44°46.83'	110°42.83'	2.1	0.6	11	198	8	0.22
220918	23:29:35.35	44°46.78'	110°48.63'	4.9	1.3W	19	95	3	0.16
220918	23:53:00.42	44°47.12'	110°48.72'	5.3	2.0W	24	99	3	0.18
220919	00:09:57.61	44°47.17'	110°48.01'	5.1	0.1	7	215	4	0.13
220919	00:44:23.87	44°47.04'	110°48.13'	3.6	0.5	9	209	4	0.13
220919	02:45:24.32	44°46.79'	110°48.17'	4.0	0.6	10	201	4	0.11
220919	03:09:38.90	44°46.54'	110°48.34'	3.4	0.7	15	191	4	0.18
220919	03:32:26.67	44°46.96'	110°48.26'	5.7	1.0W	15	206	4	0.17
220919	04:15:49.61	44°47.15'	110°48.57'	5.2	0.8W	13	212	3	0.14
220919	04:20:08.99	44°46.88'	110°48.59'	5.0	1.1W	17	101	3	0.17
220919	04:28:43.76	44°46.67'	110°48.22'	4.8	1.0W	19	94	4	0.15
220919	04:47:43.34	44°46.72'	110°48.12'	4.3	0.7W	13	199	4	0.12
220919	04:52:06.48	44°47.71'	110°48.25'	5.8	0.9W	13	107	4	0.10
220919	04:57:54.53	44°47.13'	110°48.75'	5.1	0.2	12	210	3	0.12
220919	05:02:06.61	44°46.80'	110°48.03'	3.7	0.2	9	202	4	0.13
220919	05:09:55.57	44°46.35'	110°47.99'	4.7	1.0W	15	102	4	0.10
220919	05:17:08.12	44°47.10'	110°48.13'	5.7	-0.1	8	212	4	0.05
220919	05:28:33.24	44°47.01'	110°47.72'	5.4	0.3	11	108	4	0.13
220919	05:30:09.81	44°46.97'	110°48.14'	5.1	0.0	10	207	4	0.14
220919	05:31:51.78	44°46.03'	110°48.04'	4.5	0.4W	13	179	5	0.13
220919	05:54:18.30	44°47.57'	110°48.22'	6.0	0.5	11	228	4	0.09
220919	06:07:34.92	44°47.03'	110°48.61'	5.6	1.1W	16	102	3	0.14
220919	06:16:39.65	44°47.35'	110°48.18'	4.7	0.2	10	220	4	0.12
220919	06:26:23.69	44°46.61'	110°48.67'	5.0	1.0W	17	100	3	0.13
220919	07:09:57.48	44°46.44'	110°48.44'	5.7	1.3W	18	100	4	0.13



**Table 2. Earthquakes in the Yellowstone Region: July 1–September 30, 2022**

DATE	ORIGIN TIME	LATITUDE	LONGITUDE	DEPTH	MAG	NO	GAP	DMN	RMS
220919	07:12:43.24	44°47.12'	110°48.43'	5.1	0.9W	14	108	3	0.09
220919	07:15:31.08	44°47.18'	110°48.33'	4.7	0.1	10	214	4	0.13
220919	07:26:47.80	44°46.98'	110°48.20'	4.8	0.8W	12	104	4	0.09
220919	07:45:39.10	44°46.67'	110°47.92'	4.7	1.1W	15	105	4	0.12
220919	08:35:13.23	44°46.53'	110°48.04'	4.5	0.3	12	194	4	0.18
220919	08:40:28.03	44°46.42'	110°47.63'	2.2	0.1	10	194	5	0.15
220919	09:13:51.56	44°47.49'	110°47.54'	5.9	0.9W	13	204	5	0.09
220919	09:20:59.38	44°47.55'	110°47.60'	4.7	0.2	9	228	5	0.08
220919	09:38:05.78	44°46.93'	110°48.30'	4.2	0.7W	12	103	4	0.11
220919	09:54:17.86	44°46.89'	110°49.04'	5.1	0.4	13	196	3	0.18
220919	10:05:15.65	44°16.32'	110°38.01'	4.0	0.6	11	101	8	0.04
220919	12:40:05.07	44°46.75'	110°48.48'	3.7	0.5	12	197	4	0.15
220919	13:02:44.63	44°47.03'	110°48.02'	5.3	0.3	9	210	4	0.12
220919	13:09:55.84	44°47.12'	110°48.24'	5.1	0.6W	11	212	4	0.08
220919	13:41:41.88	44°46.53'	110°48.13'	5.0	0.7W	10	102	4	0.08
220919	13:47:02.89	44°46.37'	110°48.34'	5.8	1.6W	15	86	4	0.12
220919	14:01:18.98	44°47.54'	110°48.18'	5.0	0.9W	12	226	4	0.11
220919	14:44:31.59	44°46.83'	110°48.28'	4.0	0.6	11	201	4	0.16
220919	14:52:58.18	44°47.28'	110°48.11'	4.7	0.9W	11	218	4	0.11
220919	14:54:18.94	44°47.19'	110°48.46'	5.2	0.8	10	213	3	0.09
220919	16:08:05.64	44°47.05'	110°48.64'	5.3	2.0W	18	99	3	0.13
220919	16:12:52.46	44°46.88'	110°48.85'	5.7	1.2W	19	98	3	0.16
220919	16:59:38.50	44°46.62'	110°48.48'	5.3	0.9W	12	100	4	0.11
220919	17:26:21.74	44°48.23'	110°47.90'	7.7	1.5W	17	115	4	0.12
220919	17:38:20.47	44°47.17'	110°48.52'	5.0	1.2W	11	109	3	0.11
220919	17:48:55.92	44°46.92'	110°48.30'	4.1	0.9	9	205	4	0.11
220919	17:57:03.35	44°47.69'	110°48.50'	5.0	0.5	11	232	3	0.13
220919	18:00:29.71	44°46.19'	110°48.25'	2.1	-0.3	8	181	4	0.12
220919	19:10:21.43	44°21.59'	110°33.66'	2.6	1.6	14	86	4	0.12
220919	20:14:00.74	44°46.91'	110°48.51'	5.2	1.9W	19	98	3	0.15
220919	20:38:51.96	44°47.18'	110°48.21'	4.9	1.0	9	214	4	0.16
220919	20:39:13.08	44°45.09'	110°52.45'	0.3	1.3	6	109	5	0.11
220919	21:21:58.89	44°46.40'	110°48.13'	4.9	1.8W	21	87	4	0.15
220919	21:55:57.58	44°46.64'	110°48.76'	5.2	1.4W	14	98	3	0.18
220919	21:59:37.42	44°46.94'	110°48.11'	4.3	0.9W	9	207	4	0.10
220919	22:43:12.94	44°46.49'	110°48.41'	3.7	0.4	10	189	4	0.15
220919	22:57:28.27	44°46.17'	110°47.82'	2.8	0.9	11	185	5	0.10
220919	23:39:53.26	44°46.62'	110°48.53'	8.6	2.7W	28	92	4	0.20
220919	23:44:35.76	44°46.62'	110°48.33'	4.6	0.7	14	102	4	0.15
220919	23:44:51.51	44°46.67'	110°48.39'	4.3	0.8	14	101	4	0.13
220919	23:45:02.65	44°46.58'	110°48.37'	4.0	0.3	12	192	4	0.11
220919	23:52:50.49	44°46.63'	110°48.30'	3.0	0.4	9	195	4	0.14
220919	23:55:26.68	44°46.78'	110°48.81'	5.8	1.6W	19	95	3	0.14
220920	00:00:24.03	44°28.86'	110°34.42'	3.6	0.8	12	77	5	0.08
220920	00:01:02.69	44°34.53'	110°44.52'	2.1	0.9	6	142	9	0.26

**Table 2. Earthquakes in the Yellowstone Region: July 1–September 30, 2022**

DATE	ORIGIN TIME	LATITUDE	LONGITUDE	DEPTH	MAG	NO	GAP	DMN	RMS
220920	00:07:36.11	44°46.81'	110°48.31'	5.7	0.3	9	200	4	0.10
220920	00:33:07.10	44°47.54'	110°48.14'	6.0	0.7	7	227	4	0.06
220920	00:41:00.27	44°46.49'	110°48.20'	2.4	0.0	5	191	4	0.03
220920	01:35:41.25	44°47.59'	110°48.29'	5.3	0.3	5	228	4	0.05
220920	01:43:21.46	44°46.72'	110°48.85'	5.6	1.4W	17	93	3	0.14
220920	02:21:50.63	44°47.34'	110°48.15'	5.7	0.4	8	220	4	0.05
220920	02:25:24.40	44°37.82'	110°21.45'	5.1	0.9	10	218	8	0.03
220920	02:38:02.19	44°47.72'	110°47.91'	5.2	0.5	10	233	4	0.07
220920	03:05:00.16	44°46.97'	110°48.25'	5.3	0.7W	12	206	4	0.10
220920	03:07:36.67	44°46.67'	110°42.95'	2.0	0.4	9	195	8	0.04
220920	03:41:10.99	44°47.07'	110°48.26'	5.3	0.7W	10	210	4	0.08
220920	03:54:35.02	44°47.00'	110°48.37'	4.6	0.8W	14	103	4	0.10
220920	06:04:33.64	44°47.22'	110°42.49'	2.7	1.1W	17	112	8	0.11
220920	06:10:13.72	44°46.80'	110°48.32'	5.1	1.0W	15	102	4	0.10
220920	06:14:07.45	44°47.39'	110°42.52'	2.4	-0.1	9	207	9	0.10
220920	06:33:47.64	44°46.68'	110°42.50'	4.1	2.0W	27	88	6	0.16
220920	06:34:00.09	44°47.18'	110°42.55'	4.3	1.5	16	91	8	0.11
220920	06:38:54.69	44°47.32'	110°42.46'	4.2	1.4W	18	206	7	0.13
220920	06:42:10.57	44°46.81'	110°48.24'	8.0	2.9W	41	45	4	0.19
220920	06:51:48.88	44°26.92'	110°35.08'	4.2	0.6	11	104	1	0.05
220920	07:07:47.47	44°47.43'	110°47.69'	5.6	0.4	9	224	4	0.09
220920	07:09:02.37	44°46.44'	110°47.99'	4.1	0.9W	14	103	4	0.16
220920	07:27:28.99	44°46.60'	110°47.92'	4.1	0.7W	11	104	4	0.09
220920	08:40:45.27	44°44.35'	110°46.98'	7.4	2.4W	27	59	6	0.18
220920	08:47:49.77	44°46.68'	110°48.38'	4.8	1.0W	17	94	4	0.10
220920	08:50:32.59	44°46.80'	110°48.07'	4.8	2.1W	26	97	4	0.16
220920	08:58:19.24	44°46.90'	110°47.62'	4.2	0.5	10	208	5	0.07
220920	09:09:00.14	44°46.88'	110°48.10'	4.4	0.9W	19	104	4	0.12
220920	09:22:44.14	44°27.98'	110°36.44'	4.6	1.0W	13	66	4	0.09
220920	09:24:01.82	44°26.11'	110°34.65'	3.1	0.6	11	106	1	0.16
220920	09:24:18.69	44°27.97'	110°36.46'	4.9	0.7	11	92	4	0.08
220920	09:24:26.60	44°28.02'	110°36.45'	4.2	1.2W	17	84	4	0.11
220920	09:32:32.88	44°46.65'	110°48.15'	4.2	0.9W	13	103	4	0.09
220920	09:33:21.02	44°46.45'	110°48.12'	4.8	1.1W	17	88	4	0.14
220920	09:39:14.25	44°47.19'	110°47.61'	4.7	1.0W	12	218	5	0.09
220920	09:43:58.29	44°46.88'	110°47.96'	4.1	0.0	11	206	4	0.15
220920	09:58:23.47	44°46.52'	110°48.22'	4.4	1.0W	21	90	4	0.17
220920	09:58:49.15	44°46.68'	110°48.06'	3.3	0.5	12	103	4	0.14
220920	10:10:12.65	44°47.29'	110°47.78'	5.2	0.6W	8	219	4	0.07
220920	10:22:07.76	44°47.31'	110°47.75'	5.4	0.7W	11	221	4	0.09
220920	10:32:39.08	44°47.41'	110°47.57'	5.1	0.3	10	224	5	0.07
220920	10:37:43.58	44°46.46'	110°47.70'	4.5	0.5W	12	105	5	0.09
220920	10:46:39.25	44°46.56'	110°48.33'	4.3	0.5W	12	101	4	0.15
220920	10:50:13.15	44°46.67'	110°47.90'	3.7	1.0	10	200	4	0.10
220920	11:03:40.11	44°46.55'	110°48.26'	4.7	1.3W	20	91	4	0.14

**Table 2. Earthquakes in the Yellowstone Region: July 1–September 30, 2022**

DATE	ORIGIN TIME	LATITUDE	LONGITUDE	DEPTH	MAG	NO	GAP	DMN	RMS
220920	11:24:25.48	44°48.13'	110°47.57'	9.4	1.4W	16	126	5	0.13
220920	11:41:53.06	44°47.29'	110°48.57'	4.9	0.5W	9	216	3	0.09
220920	12:17:15.35	44°47.21'	110°48.10'	6.0	0.4	8	216	4	0.10
220920	12:20:57.24	44°47.29'	110°48.63'	5.1	0.9	16	111	3	0.11
220920	12:41:41.26	44°47.12'	110°48.40'	5.7	0.9W	14	104	3	0.12
220920	13:00:35.55	44°47.07'	110°47.77'	4.8	0.1	9	213	4	0.08
220920	13:46:28.64	44°47.03'	110°47.82'	4.6	0.6	9	212	4	0.09
220920	15:02:50.33	44°46.64'	110°48.10'	3.8	0.5	9	197	4	0.08
220920	15:15:29.35	44°47.42'	110°47.52'	4.9	0.8	11	224	5	0.11
220920	15:36:04.71	44°26.76'	110°35.30'	4.0	0.9W	13	75	1	0.07
220920	17:05:14.27	44°46.90'	110°47.80'	3.8	0.9W	11	208	4	0.10
220920	17:51:23.84	44°34.76'	110°44.66'	4.8	0.4W	10	123	9	0.08
220920	18:05:31.51	44°46.95'	110°48.28'	7.5	1.5W	12	98	4	0.15
220920	19:06:43.86	44°47.44'	110°47.99'	5.1	1.1W	9	224	4	0.09
220920	20:37:32.40	44°47.07'	110°47.79'	4.1	0.9W	9	213	4	0.07
220920	21:18:34.89	44°47.41'	110°47.83'	5.5	0.9	7	223	4	0.12
220920	22:28:35.41	44°47.36'	110°47.73'	4.6	0.5	6	222	4	0.05
220920	23:57:32.85	44°46.88'	110°48.16'	4.7	1.1W	14	97	4	0.13
220921	01:24:17.41	44°46.64'	110°48.01'	4.2	0.7W	12	104	4	0.12
220921	04:23:06.14	44°47.00'	110°48.89'	4.5	1.0W	22	100	3	0.13
220921	07:02:24.82	44°46.64'	110°47.88'	4.7	1.5W	23	94	4	0.13
220921	07:25:12.35	44°46.94'	110°48.31'	6.4	1.0W	14	103	4	0.13
220921	08:26:40.97	44°46.55'	110°49.03'	5.0	1.6W	26	86	3	0.19
220921	08:32:17.95	44°49.77'	110°42.26'	2.3*	0.5	9	275	11	0.09
220921	09:58:29.27	44°46.52'	110°47.75'	4.8	2.2W	31	91	5	0.16
220921	10:01:32.77	44°46.43'	110°47.87'	7.1	2.5W	34	89	4	0.18
220921	10:03:33.19	44°46.29'	110°47.92'	4.5	0.8W	13	102	5	0.11
220921	10:36:15.92	44°46.55'	110°49.10'	4.9	0.9W	12	97	3	0.15
220921	10:36:32.63	44°46.64'	110°48.72'	4.7	0.9	10	99	3	0.11
220921	10:48:05.85	44°46.90'	110°47.73'	3.9	-0.1	8	208	4	0.06
220921	10:48:22.54	44°44.73'	110°48.15'	0.1	0.4W	7	146	6	0.16
220921	11:45:13.71	44°46.73'	110°47.58'	5.0	0.7W	13	204	5	0.08
220921	12:09:25.81	44°47.47'	110°47.70'	5.4	0.7W	12	225	4	0.10
220921	12:31:47.02	44°47.58'	110°48.33'	12.0	0.7	7	228	4	0.02
220921	13:16:10.90	44°47.22'	110°47.81'	4.9	0.4	8	217	4	0.07
220921	13:16:52.17	44°47.22'	110°48.41'	5.3	0.9W	7	215	3	0.06
220921	13:34:53.38	44°47.04'	110°47.75'	5.0	1.3W	11	212	4	0.10
220921	14:08:54.87	44°46.90'	110°47.57'	4.9	0.3	7	209	5	0.07
220921	14:37:12.35	44°46.93'	110°47.74'	3.6	0.5	13	189	4	0.10
220921	14:52:23.52	44°47.27'	110°48.61'	5.7	0.7W	9	215	3	0.08
220921	15:32:04.55	44°46.68'	110°48.02'	5.1	1.7W	19	95	4	0.13
220921	16:11:38.70	44°46.87'	110°48.21'	4.5	0.9W	16	104	4	0.11
220921	16:13:42.65	44°46.62'	110°48.26'	4.4	1.2W	18	93	4	0.11
220921	16:28:01.24	44°47.14'	110°47.87'	5.0	0.6	8	214	4	0.06
220921	16:39:42.17	44°47.04'	110°48.16'	5.0	0.7W	9	209	4	0.07

**Table 2. Earthquakes in the Yellowstone Region: July 1–September 30, 2022**

DATE	ORIGIN TIME	LATITUDE	LONGITUDE	DEPTH	MAG	NO	GAP	DMN	RMS
220921	16:46:50.07	44°46.68'	110°48.10'	4.8	0.9W	15	95	4	0.14
220921	17:09:38.47	44°46.73'	110°47.98'	4.9	1.2W	19	96	4	0.13
220921	17:44:59.48	44°47.00'	110°48.01'	4.7	1.0W	19	97	4	0.14
220921	17:49:41.49	44°46.85'	110°47.80'	4.1	0.4	8	206	4	0.08
220921	18:07:55.63	44°47.77'	110°47.70'	5.9	0.6	12	212	4	0.10
220921	20:53:00.19	44°44.94'	110°47.70'	-0.7	0.2	7	157	6	0.09
220921	21:26:27.47	44°46.59'	110°47.97'	4.8	2.0W	15	179	4	0.19
220921	21:41:26.69	44°46.43'	110°48.11'	4.7	2.1W	19	88	4	0.14
220921	21:57:49.38	44°46.50'	110°48.07'	4.7	0.5	11	193	4	0.17
220921	21:58:05.16	44°46.28'	110°47.80'	2.4	0.7	9	189	5	0.14
220921	22:47:02.43	44°47.07'	110°49.13'	5.9	1.1W	18	204	3	0.19
220921	22:56:43.01	44°46.13'	110°49.51'	3.6	0.4	9	159	3	0.14
220921	23:36:53.35	44°46.50'	110°48.35'	5.8	1.3W	19	89	4	0.21
220921	23:53:48.07	44°46.69'	110°47.91'	2.0	-0.2	7	200	4	0.18
220922	02:21:40.86	44°46.62'	110°47.86'	4.3	0.9W	11	199	4	0.17
220922	02:32:38.96	44°46.26'	110°48.65'	3.8	0.3	9	178	4	0.15
220922	04:28:28.53	44°47.11'	110°48.49'	4.8	0.5W	12	103	3	0.15
220922	04:38:30.44	44°47.04'	110°47.79'	5.0	0.2	12	205	4	0.19
220922	05:13:12.26	44°46.52'	110°48.07'	4.9	-0.1	12	193	4	0.18
220922	05:45:22.75	44°46.97'	110°47.44'	2.5	0.2	9	212	5	0.13
220922	09:31:26.00	44°46.67'	110°48.40'	4.9	1.4W	24	94	4	0.21
220922	09:42:07.25	44°46.78'	110°48.08'	3.8	0.3	11	202	4	0.14
220922	10:35:23.90	44°47.13'	110°47.95'	7.7	2.7W	31	98	4	0.19
220922	10:47:14.71	44°47.43'	110°48.01'	5.0	0.8W	16	107	4	0.18
220922	10:54:23.93	44°46.79'	110°48.01'	4.8	1.3W	23	97	4	0.19
220922	12:03:34.13	44°47.51'	110°47.79'	4.7	0.0	12	209	4	0.16
220922	12:07:03.83	44°46.72'	110°47.90'	3.5	0.3	12	201	4	0.14
220922	12:08:11.35	44°47.52'	110°47.50'	5.2	0.9W	18	210	5	0.18
220922	12:20:54.99	44°47.74'	110°47.55'	6.1	0.6W	10	212	5	0.08
220922	12:26:02.89	44°48.09'	110°47.89'	10.2	0.2	9	214	4	0.04
220922	12:29:19.85	44°46.79'	110°48.26'	5.1	1.9W	22	97	4	0.16
220922	12:30:31.65	44°46.92'	110°49.30'	6.2	0.9W	17	98	2	0.14
220922	13:02:30.16	44°48.15'	110°47.63'	5.6	0.5	13	215	5	0.08
220922	13:17:02.46	44°47.14'	110°48.90'	5.8	1.1W	20	100	3	0.19
220922	13:20:55.92	44°47.61'	110°47.73'	5.2	0.9W	14	208	4	0.12
220922	13:42:13.57	44°46.74'	110°48.29'	5.1	1.1W	22	95	4	0.17
220922	13:46:51.26	44°14.61'	110°38.04'	12.9	0.7	9	116	9	0.15
220922	13:49:08.08	44°48.15'	110°47.42'	7.2	1.1W	15	194	5	0.10
220922	14:21:56.59	44°47.13'	110°47.69'	3.6	0.4	10	215	4	0.16
220922	14:37:56.05	44°47.00'	110°47.53'	3.3	0.6	8	213	5	0.14
220922	15:12:08.77	44°46.63'	110°47.87'	4.7	0.8W	19	180	4	0.20
220922	15:23:55.59	44°46.90'	110°48.43'	4.8	1.2W	23	98	4	0.20
220922	16:04:12.65	44°47.11'	110°47.79'	3.5	0.5	9	214	4	0.12
220922	16:06:21.23	44°47.07'	110°47.67'	3.7	1.1W	12	193	4	0.12
220922	16:23:31.95	44°46.83'	110°47.94'	3.0	0.8	10	204	4	0.14

**Table 2. Earthquakes in the Yellowstone Region: July 1–September 30, 2022**

DATE	ORIGIN TIME	LATITUDE	LONGITUDE	DEPTH	MAG	NO	GAP	DMN	RMS
220922	16:23:45.69	44°47.64'	110°47.65'	5.3	0.8	10	211	4	0.16
220922	16:24:08.48	44°46.28'	110°48.05'	2.0	0.2	10	186	4	0.12
220922	17:14:41.50	44°47.32'	110°47.91'	4.7	1.2W	19	186	4	0.19
220922	17:25:48.56	44°47.69'	110°47.67'	5.1	0.7	10	211	4	0.15
220922	17:31:04.02	44°47.60'	110°47.97'	4.8	1.2W	18	188	4	0.17
220922	17:59:30.14	44°48.09'	110°47.81'	4.4	0.7	8	214	4	0.12
220922	18:21:38.22	44°48.24'	110°47.60'	5.7	1.2W	10	217	5	0.09
220922	18:24:28.77	44°47.68'	110°47.63'	4.8	1.2	7	232	5	0.05
220922	21:08:23.50	44°46.73'	110°49.03'	5.1	0.8	6	190	3	0.04
220922	23:42:50.75	44°48.45'	110°47.55'	5.5	0.8W	10	219	5	0.11
220923	01:57:45.58	44°46.70'	110°48.12'	6.7	1.9W	26	95	4	0.19
220923	04:20:36.41	44°46.81'	110°48.39'	5.0	1.2W	19	98	4	0.17
220923	05:57:30.11	44°46.88'	110°48.48'	5.3	1.5W	20	98	3	0.17
220923	06:24:26.35	44°47.64'	110°47.89'	5.3	0.0	11	210	4	0.07
220923	07:45:19.49	44°46.95'	110°48.32'	4.6	1.1W	19	98	4	0.17
220923	10:31:33.27	44°46.90'	110°48.64'	4.5	1.1W	19	99	3	0.17
220923	20:36:34.92	44°23.43'	110°46.64'	4.8	1.0	6	105	8	0.06
220924	02:08:19.85	44°47.14'	110°47.97'	5.5	0.7	16	205	4	0.17
220924	05:26:20.82	44°48.55'	110°48.62'	6.2	0.4	12	215	4	0.08
220924	14:21:52.57	44°52.31'	110°45.98'	2.8*	0.1	6	281	11	0.11
220924	17:02:54.64	44°46.72'	110°48.14'	7.9	2.1W	26	96	4	0.21
220924	17:14:10.41	44°47.75'	110°48.08'	5.7	0.7	12	210	4	0.18
220924	17:50:44.52	44°31.61'	111°01.08'	16.9	0.5	12	148	11	0.12
220924	18:13:19.67	44°46.94'	110°48.06'	4.1	0.4	8	207	4	0.09
220924	23:02:48.74	44°42.27'	111°14.03'	8.2	1.8W	21	139	1	0.17
220925	03:04:50.34	44°47.49'	110°48.60'	5.6	0.2	11	206	3	0.14
220925	05:31:22.77	44°47.07'	110°48.56'	7.5	1.4W	23	99	3	0.19
220925	05:37:02.79	44°46.93'	110°48.23'	4.9	0.5	8	205	4	0.14
220925	14:01:10.57	44°47.91'	110°48.70'	7.6	0.3	11	209	3	0.13
220925	17:30:27.16	44°47.68'	110°49.16'	6.1	0.4	11	205	3	0.12
220925	17:56:54.95	44°47.97'	110°48.42'	8.1	0.5	13	211	4	0.13
220925	18:04:54.57	44°47.56'	110°49.08'	6.2	0.9W	15	187	3	0.10
220925	18:23:47.20	44°47.11'	110°49.11'	5.4	0.7	11	207	3	0.07
220925	19:03:30.00	44°47.01'	110°49.21'	5.2	0.7	9	201	2	0.07
220925	21:12:51.93	44°47.55'	110°48.24'	8.1	1.1W	15	101	4	0.14
220925	21:52:02.11	44°46.78'	111°06.61'	9.9	0.2	12	79	2	0.12
220926	00:01:02.58	44°33.82'	110°23.57'	5.5	0.8	8	148	1	0.14
220926	05:34:34.20	44°47.39'	110°48.77'	7.9	0.7W	13	102	3	0.14
220926	08:17:57.11	44°46.98'	110°48.83'	7.6	1.4W	20	101	3	0.19
220926	08:18:14.63	44°47.02'	110°48.10'	5.2	0.4	8	209	4	0.06
220926	11:03:33.46	44°48.04'	110°47.92'	6.7	0.1	11	214	4	0.10
220926	12:29:01.98	44°47.99'	110°48.16'	7.7	0.2	11	212	4	0.11
220926	14:29:23.92	44°47.68'	110°47.72'	6.2	1.4W	13	146	4	0.11
220926	22:52:03.01	44°47.60'	110°47.85'	5.3	1.3W	19	101	4	0.16
220927	01:41:59.84	44°46.86'	110°49.74'	5.6	0.9W	15	94	2	0.18

**Table 2. Earthquakes in the Yellowstone Region: July 1–September 30, 2022**

DATE	ORIGIN TIME	LATITUDE	LONGITUDE	DEPTH	MAG	NO	GAP	DMN	RMS
220927	04:07:46.31	44°47.75'	110°48.88'	6.2	0.2	16	207	3	0.16
220927	06:22:59.80	44°30.73'	110°36.02'	5.7	0.9W	17	52	8	0.12
220927	07:33:51.76	44°47.77'	110°48.94'	6.4	0.2	15	207	3	0.16
220927	07:56:57.83	44°47.24'	110°48.15'	5.9	-0.1	8	217	4	0.09
220927	08:09:04.49	44°47.50'	111°00.31'	7.7	1.1W	24	114	4	0.18
220927	09:48:49.06	44°47.85'	110°47.97'	5.0	0.1	10	211	4	0.12
220927	10:06:10.79	44°48.03'	110°48.82'	6.2	0.6W	12	210	3	0.13
220927	13:31:33.33	44°48.05'	111°00.18'	7.0	0.2	16	164	5	0.10
220927	13:48:21.49	44°48.15'	110°48.01'	5.7	0.5	9	214	4	0.09
220927	21:17:48.69	44°47.05'	110°48.68'	10.5	2.1W	25	99	3	0.16
220927	22:12:16.63	44°47.44'	110°48.75'	6.4	0.9	15	205	3	0.16
220927	22:13:39.02	44°48.15'	110°48.41'	6.3	0.9	13	212	4	0.14
220927	22:28:56.75	44°48.00'	110°48.09'	7.5	1.0W	13	213	4	0.13
220927	22:39:31.91	44°42.26'	111°12.84'	5.7	1.4W	20	98	2	0.20
220927	22:53:36.55	44°48.24'	110°48.24'	6.1	0.6	14	214	4	0.14
220928	01:24:22.16	44°06.48'	110°36.26'	8.8	1.2	22	141	8	0.15
220928	02:58:35.97	44°42.54'	111°12.44'	4.9	0.6W	20	126	3	0.18
220928	03:07:14.39	44°47.04'	110°48.75'	5.1	1.3W	21	101	3	0.20
220928	05:43:01.82	44°45.17'	111°06.19'	11.0	0.2	14	81	5	0.10
220928	06:26:21.34	44°45.31'	111°06.42'	10.5	0.3	14	79	5	0.13
220928	06:56:31.62	44°48.18'	110°48.04'	6.2	0.7W	13	214	4	0.14
220928	12:19:16.97	44°47.86'	110°47.91'	6.9	0.1	8	211	4	0.09
220928	13:46:06.71	44°48.42'	110°47.81'	7.4	0.2	5	217	5	0.09
220928	13:46:36.69	44°48.14'	110°48.26'	6.2	0.6W	8	213	4	0.14
220928	14:37:42.39	44°47.57'	110°48.03'	5.7	0.3	7	228	4	0.05
220928	19:16:26.36	44°47.94'	110°57.80'	6.7	-0.2	11	168	6	0.15
220928	22:53:55.38	44°30.58'	110°59.88'	8.8	0.8W	19	117	13	0.22
220928	23:32:12.91	44°46.94'	110°49.01'	6.2	0.9W	16	100	3	0.18
220928	23:42:18.52	44°47.69'	110°47.82'	6.9	0.5W	8	211	4	0.09
220928	23:42:47.85	44°46.95'	110°48.29'	5.7	0.7W	11	103	4	0.13
220929	04:46:23.42	44°49.32'	110°47.02'	6.3	0.3	10	121	6	0.20
220929	04:54:23.76	44°47.23'	110°48.28'	7.5	1.1W	20	99	4	0.20
220929	07:59:23.86	44°46.50'	110°48.07'	4.1	0.2	10	193	4	0.08
220929	12:37:46.81	44°47.07'	110°47.49'	5.0	0.3	10	214	5	0.07
220929	12:38:02.94	44°46.61'	110°48.39'	6.4	1.4W	18	91	4	0.17
220929	12:38:14.05	44°46.44'	110°48.10'	4.8	0.9	12	88	4	0.14
220929	13:03:26.20	44°46.64'	110°48.25'	4.4	0.6	16	102	4	0.19
220929	13:48:25.46	44°46.95'	110°48.34'	4.6	0.9W	16	103	4	0.14
220929	17:24:38.63	44°47.61'	110°48.72'	6.4	0.9W	20	187	3	0.18
220929	21:21:58.24	44°46.39'	110°53.07'	5.2	-0.1	10	157	3	0.10
220929	21:28:41.19	44°41.83'	111°13.86'	7.1	2.3W	22	190	2	0.18
220929	23:59:13.57	44°46.51'	110°48.09'	8.1	2.6W	27	90	4	0.18
220930	00:01:07.90	44°46.39'	110°47.88'	4.2	0.1	10	191	4	0.11
220930	00:02:34.72	44°47.59'	110°47.81'	6.3	0.7	12	109	4	0.17
220930	00:05:02.50	44°47.40'	110°47.77'	5.7	0.5	9	208	4	0.12

**Table 2. Earthquakes in the Yellowstone Region: July 1–September 30, 2022**

DATE	ORIGIN TIME	LATITUDE	LONGITUDE	DEPTH	MAG	NO	GAP	DMN	RMS
220930	00:06:01.27	44°46.27'	110°48.11'	4.0	-0.5	7	185	4	0.10
220930	00:17:48.59	44°44.80'	110°54.55'	3.0	-0.6	9	124	7	0.09
220930	00:33:34.87	44°47.54'	110°47.55'	5.5	0.4	11	210	5	0.14
220930	01:00:23.89	44°46.92'	110°47.65'	5.1	-0.6	7	208	5	0.16
220930	01:10:54.88	44°46.39'	110°48.09'	4.8	0.9W	14	102	4	0.18
220930	01:29:00.50	44°37.29'	110°44.85'	2.1	-0.6	9	167	8	0.19
220930	01:29:41.62	44°47.60'	110°47.63'	5.4	-0.2	10	211	5	0.14
220930	01:37:08.10	44°37.14'	110°19.40'	5.3	0.2	7	127	9	0.03
220930	01:42:06.77	44°46.47'	110°48.16'	6.7	1.1	20	89	4	0.20
220930	01:57:58.55	44°47.20'	110°47.73'	5.6	-0.2	10	206	4	0.15
220930	02:01:31.48	44°46.86'	110°47.59'	5.6	-0.2	9	207	5	0.07
220930	02:05:54.38	44°47.86'	110°47.38'	7.7	0.2	8	215	5	0.09
220930	02:05:59.29	44°47.32'	110°48.06'	8.0	0.3	6	206	4	0.06
220930	02:07:57.56	44°48.57'	110°46.97'	6.4	-0.2	7	222	6	0.06
220930	03:14:11.97	44°47.51'	110°47.83'	6.9	0.4	10	209	4	0.15
220930	03:38:19.88	44°47.19'	110°47.86'	5.3	-0.7	6	217	4	0.05
220930	04:01:58.77	44°47.57'	110°48.43'	6.1	-0.6	7	228	3	0.04
220930	05:39:42.40	44°47.87'	110°47.21'	5.6	-0.2	11	215	5	0.11
220930	05:45:46.94	44°23.37'	110°20.11'	7.5	2.0W	27	109	4	0.18
220930	06:41:28.92	44°23.87'	110°21.61'	2.3	0.6	11	126	6	0.10
220930	09:33:16.69	44°47.01'	110°48.18'	5.0	0.3	9	208	4	0.11
220930	10:33:39.78	44°47.14'	110°48.31'	5.4	0.2	7	212	4	0.07
220930	10:36:30.56	44°47.11'	110°48.66'	7.6	2.0W	26	99	3	0.19
220930	10:42:10.53	44°47.12'	110°48.61'	6.9	1.5W	22	100	3	0.20
220930	10:43:11.39	44°47.07'	110°48.11'	5.2	0.4	10	211	4	0.11
220930	10:43:43.78	44°46.76'	110°48.59'	3.1	-0.1	7	196	3	0.09
220930	11:20:49.59	44°47.40'	110°48.24'	4.4	0.4	11	221	4	0.10
220930	12:08:44.07	44°48.54'	110°48.02'	5.0	-0.4	8	218	5	0.07
220930	16:02:12.83	44°48.11'	110°47.34'	10.9	0.9	15	176	5	0.14
220930	16:13:11.53	44°46.55'	110°48.42'	5.8	1.5W	21	90	4	0.20
220930	16:33:22.97	44°47.30'	110°48.69'	5.0	0.6	12	216	3	0.12
220930	16:53:43.72	44°47.80'	110°47.71'	6.3	0.5	12	212	4	0.13
220930	20:08:49.50	44°47.75'	110°47.58'	5.9	0.3	7	212	5	0.12
220930	20:11:56.26	44°46.64'	110°48.53'	5.1	0.7	15	100	4	0.20
220930	20:28:05.12	44°47.67'	110°47.44'	5.2	0.2	9	212	5	0.15
220930	23:00:11.79	44°48.22'	110°48.19'	5.1	0.7	14	191	4	0.16

number of earthquakes = 1,026

\* indicates poor depth control

W indicates Wood-Anderson data used for magnitude calculation

**Table 3**  
**UNIVERSITY OF UTAH YELLOWSTONE SEISMIC NETWORK**  
**Operating Seismograph Stations**  
**September 30, 2022**

SEED Station	Location	SEED Channel	No. of Channels	Network Code	Latitude	Longitude	Elevation (meters)	Sensor	Digitizer	Telemetry	Sponsor
B206*	Canyon206bwy2008, Yellowstone, WY	EH[ZEN]	3	PB	44° 46.66'	110° 30.70'	2400	IESE-S2	Q330	Digital	PBO
B207*	Madisn207bwy2007, Yellowstone, WY	EH[ZEN]	3	PB	44° 37.14'	110° 50.91'	2182	IESE-S2	Q330	Digital	PBO
B208*	Lakejn208bwy2008, Yellowstone, WY	EH[ZEN]	3	PB	44° 33.61'	110° 24.09'	2406	IESE-S2	Q330	Digital	PBO
B944*	Grantt944bwy2008, Yellowstone, WY	EH[ZEN]	3	PB	44° 23.38'	110° 32.63'	2365	IESE-S2	Q330	Digital	PBO
B945*	Panthr944swy2008, Yellowstone, WY	EH[ZEN]	3	PB	44° 53.64'	110° 44.65'	2249	IESE-S2	Q330	Digital	PBO
B950*	Norris950bwy2013, Yellowstone, WY	EH[ZEN]	3	PB	44° 42.77'	110° 40.71'	2328	IESE-S2	Q330	Digital	PBO
FLWY*	Flagg Ranch, WY	BH[ZEN]	3	IW	44° 04.96'	110° 41.96'	2078	3ESP	RT-130	Digital	ANSS
IMW*	Indian Meadows, WY	BH[ZEN]	3	IW	43° 53.58'	110° 56.58'	2670	3ESP	RT-130	Digital	ANSS
LKWY*	Lake, WY	BH[ZEN]	3	US	44° 33.91'	110° 24.00'	2424	STS-2	Q330	Digital	USGS
LOHW*	National Elk Refuge, WY	BH[ZEN]	3	IW	43° 36.76'	110° 36.30'	2245	3ESP	RT-130	Digital	ANSS
MCID	Moose Creek, ID	EHZ	1	WY	44° 11.45'	111° 11.03'	2137	L4C	PSN	Analog	USGS
MOOW*	Moose Ponds, WY	BH[ZEN]	3	IW	43° 44.92'	110° 44.69'	2128	3ESP	RT-130	Digital	ANSS
QLMT*	Earthquake Lake, MT	EHZ	1	MB	44° 49.84'	111° 25.80'	2064	L4C	-	Analog	MBMT
REDW*	Red-Top Meadows, WY	BH[ZEN]	3	IW	43° 21.74'	110° 51.18'	2322	3ESP	RT-130	Digital	ANSS
SNOW*	Snow King Mountain, WY	BH[ZEN]	3	IW	43° 27.75'	110° 45.31'	2390	3ESP	RT-130	Digital	ANSS
TPAW*	Teton Pass, WY	BH[ZEN]	3	IW	43° 29.41'	110° 57.04'	2512	3ESP	RT-130	Digital	ANSS
TPMT*	Teepee Creek, MT	EHZ	1	MB	44° 43.79'	111° 39.94'	2518	L4C	-	Analog	MBMT
YDC	Denny Creek, MT	EHZ	1	WY	44° 42.51'	111° 14.60'	2025	L4C	PSN	Analog	USGS
YDD	Grant Junction, Yellowstone, WY	HH[ZEN]	3	WY	44° 24.00'	110° 34.80'	2400	STS-2	Q330	Digital	NSF
		EN[ZEN]	3					Episensor			
YEE	East Entrance (YNP), WY	HH[ZEN]	3	WY	44° 29.12'	109° 53.81'	2270	Compact PH	Centaur	Digital	USGS
YFT	Old Faithful (YNP), WY	HH[ZEN]	3	WY	44° 27.05'	110° 50.24'	2292	Compact	Centaur	Digital	USGS
		EN[ZEN]	3					Titan			
YGC	Grayling Creek, MT	EHZ	1	WY	44° 47.77'	111° 06.45'	2075	L4C	PSN	Analog	USGS
YHB	Horse Butte, MT	EHZ	1	WY	44° 45.07'	111° 11.71'	2157	L4C	Centaur	Digital	USGS
		HH[ZEN]	3					Compact			
		EN[ZEN]	3					Titan			
YHH	Holmes Hill (YNP), WY	EHZ	1	WY	44° 47.30'	110° 51.03'	2717	S13	Q330	Digital	USGS
		HH[ZEN]	3					Trillium 120			
		EN[ZEN]	3					Titan			



SEED Station	Location	SEED Channel	No. of Channels	Network Code	Latitude	Longitude	Elevation (meters)	Sensor	Digitizer	Telemetry	Sponsor
YHL	Hebgen Lake, MT	HH[ZEN]	3	WY	44° 51.05'	111° 10.98'	2691	Trillium 120	Q330	Digital	USGS
		EN[ZEN]	3					Titan			
YHR	Hawk's Rest, WY	HH[ZEN]	3	WY	44° 06.36'	110° 04.90'	2976	Trillium 120	Q330	Digital	USGS
YJC	Joseph's Coat (YNP), WY	EH[ZEN]	3	WY	44° 45.33'	110° 20.95'	2684	S13	PSN	Analog	USGS
YLA	Lake Butte (YNP), WY	EHZ	1	WY	44° 30.76'	110° 16.12'	2580	L4C	PSN	Analog	USGS
YLT	Little Thumb Creek (YNP), WY	EHZ	1	WY	44° 26.25'	110° 35.28'	2439	L4C	PSN	Analog	USGS
YMC	Maple Creek (YNP), WY	EH[ZEN]	3	WY	44° 45.53'	111° 00.41'	2073	S13	PSN	Analog	USGS
YML	Mary Lake (YNP), WY	EH[ZEN]	3	WY	44° 36.20'	110° 38.63'	2653	S13	PSN	Analog	USGS
YMP	Mirror Plateau (YNP), WY	EHZ	1	WY	44° 44.38'	110° 09.40'	2774	S13	PSN	Analog	USGS
		HH[ZEN]	3					Trillium 120			
		EN[ZEN]	3					Titan			
YMR	Madison River (YNP), WY	HH[ZEN]	3	WY	44° 40.12'	110° 57.90'	2149	Trillium 120	Q330	Digital	USGS
		EN[ZEN]	3					Titan			
YMS	Mount Sheridan (YNP), WY	EHZ	1	WY	44° 15.84'	110° 31.67'	3106	L4C	PSN	Analog	USGS
YMV	Mammoth Vault (YNP), WY	EHZ	1	WY	44° 58.42'	110° 41.33'	1829	L4C	PSN	Analog	USGS
YNE	Northeast Entrance (YNP), WY	HH[ZEN]	3	WY	45° 00.46'	110° 00.48'	2343	Compact	Centaur	Digital	USGS
YNM	Norris Museum (YNP), WY	HH[ZEN]	3	WY	44° 43.59'	110° 42.22'	2311	Trillium 240	Q330	Digital	USGS
YNR	Norris Junction (YNP), WY	HH[ZEN]	3	WY	44° 42.93'	110° 40.75'	2336	Trillium 120	Q330	Digital	USGS
		EN[ZEN]	3					Titan			
YPC	Pelican Cone (YNP), WY	EHZ	1	WY	44° 38.88'	110° 11.55'	2932	L4C	PSN	Analog	USGS
YPK	Parker Peak (YNP), WY	EH[ZEN]	3	WY	44° 43.91'	109° 55.32'	2897	L4C	PSN	Analog	USGS
YPM	Purple Mountain (YNP), WY	EHZ	1	WY	44° 39.43'	110° 52.12'	2582	L4C	PSN	Analog	USGS
YPP	Pitchstone Plateau (YNP), WY	EHZ	1	WY	44° 16.26'	110° 48.27'	2707	S13	PSN	Analog	USGS
		HH[ZEN]	3					Trillium 120			
		EN[ZEN]	3					Titan			
YSB	Soda Butte (YNP), WY	EHZ	1	WY	44° 53.04'	110° 09.06'	2072	L4C	PSN	Analog	USGS
YTP	The Promontory (YNP), WY	EHZ	1	WY	44° 23.51'	110° 17.10'	2384	L4	PSN	Analog	USGS
		HH[ZEN]	3					Trillium 120			
		EN[ZEN]	3					Titan			
YUF	Upper Falls (YNP), WY	HH[ZEN]	3	WY	44° 42.76'	110° 30.71'	2394	Trillium 120	Centaur	Digital	USGS
		EN[ZEN]	3					Titan			
YWB	West Boundary (YNP), WY	EHZ	1	WY	44° 36.35'	111° 06.05'	2310	L4C	PSN	Analog	USGS

\* Station operated by another agency and recorded as part of the Yellowstone Seismic Network  
Network Statistics: 150 data channels from 46 stations were being recorded at the end of this report period

## EXPLANATION OF TABLE

**UURSN Code:** Station code formerly used in routine processing. Owing to software limitations, the station code may not be the same code used by the original operator. For multi-component stations, the vertical, east-west, and north-south high gain (low gain) components are identified by an appended Z(V), E(L), and N(M), respectively, in UUSS phase files.

**Location:** General description of station location. YNP = Yellowstone National Park.

**SEED Station:** The SEED (Standard for the Exchange of Earthquake Data) station code used by the original operator.

**SEED Channel:** The SEED format uses three letters to name seismic channels. See <<[http://www.iris.edu/manuals/SEEDManual\\_V2.4.pdf](http://www.iris.edu/manuals/SEEDManual_V2.4.pdf)>> for information about the SEED channel naming convention. Relevant sections are reproduced below. In the SEED convention, each letter describes one aspect of the instrumentation and its digitization. The first letter specifies the general sampling rate and the response band of the instrument. Band codes used in this table include:

Band Code	Band Type	Sample Rate	Corner Period
E	Extremely short period	≥ 80 Hertz	< 10 seconds
H	High broadband	≥ 80 Hertz	≥ 10 seconds
B	Broadband	≥ 10 to < 80 Hertz	≥ 10 seconds
S	Short period	≥ 10 to < 80 Hertz	< 10 seconds

The second letter specifies the family to which the sensor belongs. Sensor families used in this table are:

Instrument Code	Description
H	High gain seismometer
L	Low gain seismometer
N	Accelerometer

The third letter specifies the physical configuration of the members of a multiple axis instrument package. Channel orientations used in this table are:

Z E N      Traditional (Vertical, East-West, North-South)

**Number of Channels:** Total number of waveform channels recorded.

**Network Code:** The FDSN (Federation of Digital Seismographic Networks) registered network code. See <<[http://www.iris.edu/dms/nodes/dmc/services/network\\_codes](http://www.iris.edu/dms/nodes/dmc/services/network_codes)>> for information about registered seismograph network codes. Network codes referenced in this table:

Network Code	Network name; Network operator or responsible organization
IE	Idaho National Laboratory Seismic Network
IU	IRIS/USGS Network; USGS Albuquerque Seismological Laboratory
IW	Intermountain West Network, U.S. Geological Survey

MB	Montana Regional Seismic Network; Montana Bureau of Mines and Geology
PB	Plate Boundary Observatory
UU	University of Utah Regional Network; University of Utah
US	US National Network; USGS National Earthquake Information Center
WY	Yellowstone Wyoming Seismic Network; University of Utah

**Latitude, Longitude:** Sensor location in degrees and decimal minutes; North latitude, West longitude.

**Elevation:** Sensor altitude in meters above sea level.

<b>Sensor</b>	<b>Description</b>
L4, L4C	Mark Products L4 or L4C short-period seismometer
S13, 18300	Geotech S13 or 18300 short-period seismometer
Ranger	Kinometrics Ranger short-period seismometer
40T	Guralp CMG-40T broadband seismometer
3T	Guralp CMG-3T broadband seismometer
3ESP	Guralp CMG-3ESP broadband seismometer
STS-2	Streckheisen STS-2 broadband seismometer
FBA23	Kinometrics FBA-23 accelerometer
EpiSensor	Kinometrics EpiSensor accelerometer
Applied Mems	Applied Mems accelerometer
PA-23	Geotech PA-23 accelerometer
Compact	Nanometrics Compact broadband seismometer
Compact PH	Nanometrics Compact Posthole broadband seismometer
Trillium 120	Nanometrics Trillium 120 broadband seismometer
Trillium 240	Nanometrics Trillium 240 broadband seismometer
Titan	Nanometrics Titan accelerometer
Observer	Refraction Technology (REF TEK) Model 151 Observer broadband seismometer
IESE-S2	Institute of Earth Science and Engineering S-2 model borehole seismometer

<b>Digitizer</b>	<b>Description</b>
K2	Kinometrics Altus Series K2 (19-bit resolution field digitizer)
Etna	Kinometrics Altus Series Etna (18-bit resolution field digitizer)
72A-07	Refraction Technology (REF TEK) model 72A-07 (24-bit field digitizer)
72A-08	Refraction Technology (REF TEK) model 72A-08 (24-bit field digitizer)
ANSS-130	Refraction Technology (REF TEK) model 130-ANSS/02 (24-bit resolution field digitizer)
RT-130	Refraction Technology (REF TEK) model RT-130 (24-bit resolution field digitizer)
Q330	Quanterra, Inc Q330 digitizer (24-bit resolution field digitizer)
SMART-24	Geotech SMART-24 digitizer (24-bit resolution field digitizer)
PSN	PSN-ADC-SERIAL version III (16-bit resolution field digitizer)
Basalt	Kinometrics Basalt (24-bit resolution field digitizer)
Taurus	Nanometrics Taurus (24-bit resolution field digitizer)
Centaur	Nanometrics Centaur (24-bit resolution field digitizer)

<b>Telemetry</b>	<b>Description</b>
Analog	Data transmission is analog along part of the transmission pathway
Digital	Data are converted to digital form at the station site
None	On-site recording system

**Sponsor (or Operator for stations marked by \* in preceding columns)**

USGS	U.S. Geological Survey
Utah	State of Utah
ANSS	Advanced National Seismic System
INL	Idaho National Laboratory
MBMT	Montana Bureau of Mines and Geology
PBO	Plate Boundary Observatory
NSF	National Science Foundation

**Network Changes During July 1–September 30, 2022**

September 08      Trillium Compact sensor installed at YFT (Trillium Compact PH removed)