

# **EARTHQUAKE ACTIVITY IN THE YELLOWSTONE REGION**

Preliminary Epicenters

July 1 – September 30, 2021

Prepared by the University of Utah Seismograph Stations and funded by  
the U.S. Geological Survey (Cooperative Agreement No. G21AC10068)

December 22, 2021

## Foreword and Data Explanation

This report contains an epicenter map (Figure 1) and listings of earthquakes (Tables 1 and 2) detected and located in the Yellowstone region (lat. 44° 00' – 45° 10' N, long. 109° 45' – 111° 30' W). The computer program HYPOINVERSE-2000 (F. W. Klein, 2012, U.S. Geological Survey Open-File Report 02-171 revised) was used to process the earthquake data. This report also includes maps and a table of operating seismograph stations in the University of Utah's Yellowstone seismic network (Figure 2, Table 3).

The earthquake listing in Table 2 is estimated to be systematically complete above magnitude 1.5 within Yellowstone. *These data are preliminary—both the locations and magnitudes in this table are subject to revision.*

The following data are listed for each earthquake in Table 2:

- Date (yymmdd) and origin time in Coordinated Universal Time (UTC). To convert to local time, subtract seven hours for Mountain Standard Time (MST) and six hours for Mountain Daylight Time (MDT). During the report period, local time was MDT.
- Earthquake location coordinates in degrees and minutes of north latitude and west longitude, and depth in kilometers below sea level. Note that prior to October 1, 2012, the earthquake depths in these quarterly reports were computed relative to a datum of 2000 m above sea level.
- "\*" indicates poor depth resolution: no recording stations within 10 km or twice the depth.
- MAG, the computed Richter local magnitude ( $M_L$ ) for each earthquake. "W" indicates that peak amplitude measurements from Wood-Anderson records were used. Otherwise, the estimate is calculated from signal durations and is more correctly identified as coda magnitude ( $M_C$ ). The notation "--" indicates that a reliable magnitude estimate could not be made.
- NO, the number of P and S readings used in the solution.
- GAP, the largest azimuthal separation in degrees between recording stations used in the solution.
- DMN, the epicentral distance in kilometers to the closest station.
- RMS, the weighted root-mean-square of the travel-time residuals in seconds:

$$RMS = \left( \frac{\sum_i (W_i R_i)^2}{\sum_i (W_i)^2} \right)^{\frac{1}{2}}$$

where:  $R_i$  is the observed minus the computed arrival time for the  $i$ -th P or S reading, and  $W_i$  is the relative weight given to the  $i$ -th P or S arrival time (0.0 for no weight through 1.0 for full weight).



**EARTHQUAKE ACTIVITY IN THE YELLOWSTONE REGION**  
**July 1 – September 30, 2021**

by J. Farrell, R. Burlacu, P. M. Roberson, J. M. Hale, B. Ericksen, and Z. Claerhout  
with contributions by  
K. D. Koper, R. B. Smith, J. C. Pechmann, and K. L. Pankow

University of Utah Seismograph Stations  
115 South 1460 East, Room 107 FASB  
Salt Lake City, UT 84112-0102  
Tele: (801) 581-6274 FAX: (801) 585-5585  
email: [jamie.farrell@utah.edu](mailto:jamie.farrell@utah.edu)  
URL: <https://www.seis.utah.edu> (aka [quake.utah.edu](https://www.quake.utah.edu))

During the three-month period July 1 through September 30, 2021, the University of Utah Seismograph Stations (UUSS) located 1,496 earthquakes within the Yellowstone region (Figure 1). The total includes 8 earthquakes in the magnitude 3 range and 106 earthquakes in the magnitude 2 range. The largest event to occur during this period was a magnitude 3.6 earthquake on July 17. Three earthquakes were reported felt in the region during the report period (see Table 1, a cumulative tabulation of earthquakes that were felt in the Yellowstone region during 2021). Additional information on earthquakes within the Yellowstone region is available from the University of Utah Seismograph Stations.

**Online Information**

A complete copy of this report, including maps and the earthquake catalog, is available on the UUSS web site at <https://quake.utah.edu/earthquake-center/quarterly-seismicity-reports>.

*Note:* On October 1, 2012, UUSS began using the ANSS Quake Monitoring System (AQMS) software package for data acquisition and data processing. The primary effect on the data reported herein comes from computing the earthquake locations with a newer version of the computer program HYPOINVERSE-2000 (F. W. Klein, 2012, U.S. Geological Survey Open-File Report 02-171 revised) and a revised and expanded set of velocity models. As implemented at UUSS, this new version of the location program accounts for station elevation differences more accurately and reports focal depths relative to sea level instead of the 2000 m elevation datum used previously.

For earthquakes of magnitude 3 and larger in the Yellowstone region, the U. S. Geological Survey automatically posts a Community Internet Intensity Map (CIIM) on its "Did You Feel It?" web page at <http://earthquake.usgs.gov/earthquakes/dyfi/>. We encourage anyone who feels an earthquake to report their observations on this interactive web site; felt information is available by zip code on the CIIM site or can be obtained from UUSS directly.

## Earthquakes of Magnitude 3.0 or Larger

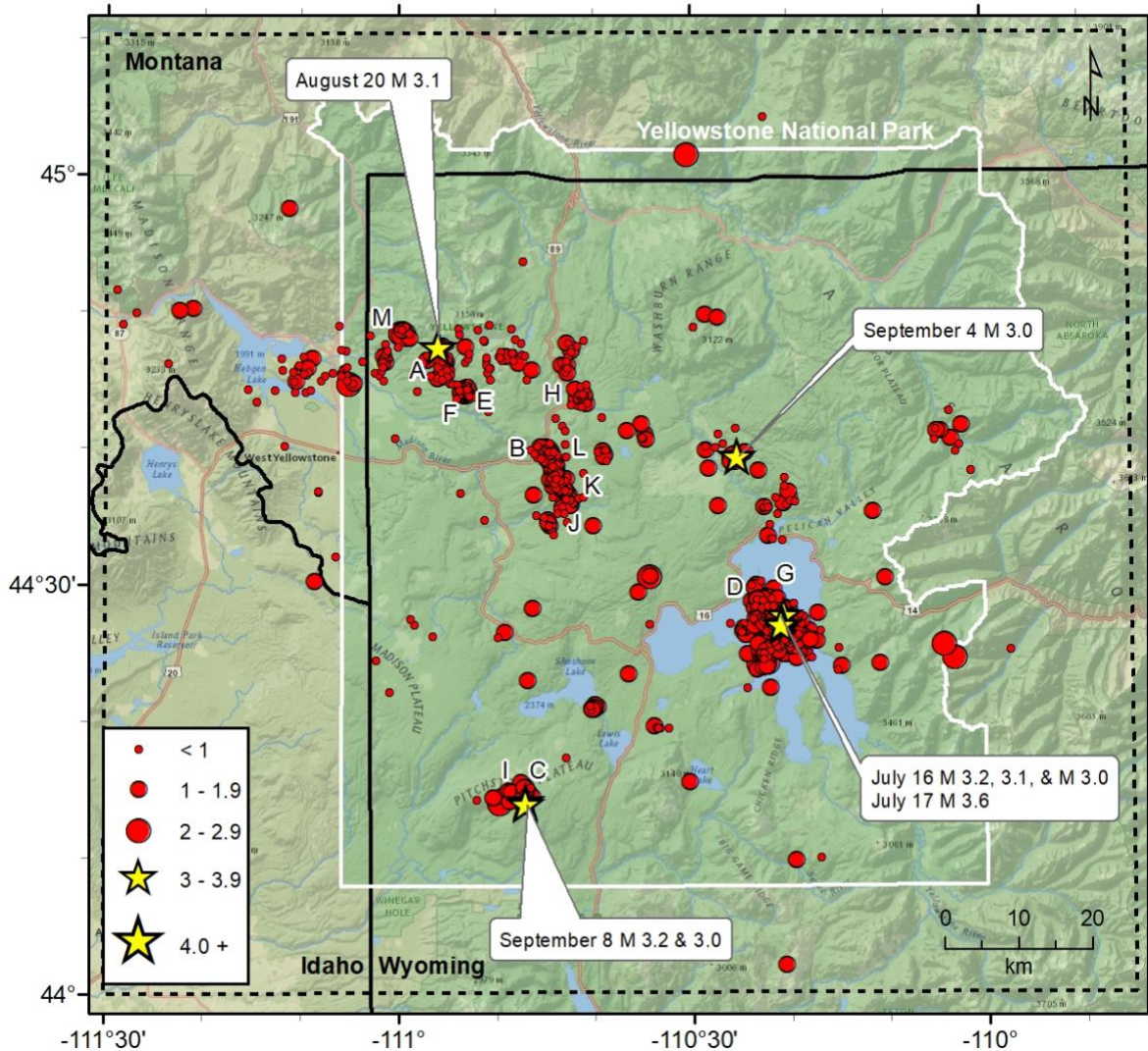
M <sub>L</sub> 3.0	July 16	06:54 MDT	7.4 mi SE of Lake, YNP
M <sub>L</sub> 3.1	July 16	08:12 MDT	7.4 mi SE of Lake, YNP
M <sub>L</sub> 3.2	July 16	13:44 MDT	7.4 mi SE of Lake, YNP
M <sub>L</sub> 3.6	July 16	18:45 MDT	6.7 mi SE of Lake, YNP
M <sub>L</sub> 3.1	August 20	11:00 MDT	12.3 mi NE of West Yellowstone, MT
M <sub>L</sub> 3.0	September 03	23:51 MDT	6.5 mi SE of Canyon, YNP
M <sub>L</sub> 3.2	September 08	11:01 MDT	15.5 mi S of Old Faithful, YNP
M <sub>L</sub> 3.0	September 08	12:00 MDT	15.5 mi S of Old Faithful, YNP

## Notable Swarm Seismicity

During the report period, there were 13 earthquake swarms in the Yellowstone region. For reporting purposes, we use the Mogi definition [Mogi, 1963] of a swarm and require each swarm to have ten or more earthquakes. Note that typically, around 50% of Yellowstone earthquakes occur as part of a seismic swarm [Farrell et al., 2009].

- A. A swarm of 34 earthquakes ( $-0.9 \leq M \leq 1.5$ ) occurred about 11.9 mi NE of West Yellowstone, MT from July 1<sup>st</sup> – 4<sup>th</sup>.
- B. A swarm of 26 earthquakes ( $-0.3 \leq M \leq 2.6$ ) occurred about 17.9 mi E of West Yellowstone, MT from July 1<sup>st</sup> – 4<sup>th</sup>.
- C. A swarm of 14 earthquakes ( $0.3 \leq M \leq 2.0$ ) occurred about 15.0 mi S of Old Faithful, YNP on July 10<sup>th</sup>.
- D. A swarm of 825 earthquakes ( $-0.8 \leq M \leq 3.6$ ) occurred about 7.6 mi SSE of Lake, YNP from July 15<sup>th</sup> – 25<sup>th</sup>.
- E. A swarm of 10 earthquakes ( $0.3 \leq M \leq 1.3$ ) occurred about 12.5 mi NE of West Yellowstone, MT from July 19<sup>th</sup> – 21<sup>st</sup>.
- F. A swarm of 32 earthquakes ( $-0.4 \leq M \leq 2.1$ ) occurred about 11.7 mi NE of West Yellowstone, MT from July 23<sup>rd</sup> – 28<sup>th</sup>.
- G. A swarm of 10 earthquakes ( $0.1 \leq M \leq 1.3$ ) occurred about 6.8 mi SSE of Lake, YNP from July 27<sup>th</sup> – 31<sup>st</sup>.
- H. A swarm of 18 earthquakes ( $0.0 \leq M \leq 1.9$ ) occurred about 2.9 mi N of Norris Junction, YNP on July 29<sup>th</sup>.
- I. A swarm of 14 earthquakes ( $0.9 \leq M \leq 3.2$ ) occurred about 14.8 mi S of Old Faithful, YNP on September 8<sup>th</sup>.
- J. A swarm of 12 earthquakes ( $0.1 \leq M \leq 1.7$ ) occurred about 18.5 mi ESE of West Yellowstone, MT from September 16<sup>th</sup> – 19<sup>th</sup>.
- K. A swarm of 110 earthquakes ( $-0.3 \leq M \leq 1.8$ ) occurred about 17.7 mi E of West Yellowstone, MT from September 16<sup>th</sup> – 24<sup>th</sup>.
- L. A swarm of 31 earthquakes ( $-0.1 \leq M \leq 1.7$ ) occurred about 19.4 mi ESE of West Yellowstone, MT from September 27<sup>th</sup> – 30<sup>th</sup>.
- M. A swarm of 12 earthquakes ( $-0.2 \leq M \leq 1.5$ ) occurred about 10.4 mi NE of West Yellowstone, MT from September 27<sup>th</sup> – 30<sup>th</sup>.

These swarms are labeled in Figure 1.



**Figure 1.** Epicenters of earthquakes located by the University of Utah Seismograph Stations, July 1, 2021, through September 30, 2021. Earthquake swarms (labeled A–M) are discussed in the text.

**Table 1**  
**EARTHQUAKES FELT IN THE YELLOWSTONE REGION**  
**January 1, 2021, to September 30, 2021**

<b>Date</b>	<b>Time†</b>	<b>Felt Information‡</b>	<b>Latitude</b>	<b>Longitude</b>	<b>Magnitude§</b>
February 09	00:18 MST 07:18 UTC	<a href="#">Yellowstone. Felt (II) at West Yellowstone, MT.</a>	44° 39.00'	111° 06.90'	M <sub>L</sub> 2.2
July 16	08:12 MDT 14:12 UTC	<a href="#">Yellowstone. Felt (III) at Yellowstone N.P.</a>	44° 27.05'	110° 20.71'	M <sub>L</sub> 3.1
July 16 July 17	18:45 MDT 00:45 UTC	<a href="#">Yellowstone. Felt (III) at Yellowstone N.P.</a>	44° 27.73'	110° 20.66'	M <sub>L</sub> 3.6
September 03 September 04	23:51 MDT 05:51 UTC	<a href="#">Yellowstone. Felt (III) at Yellowstone N.P.</a>	44° 39.38'	110° 25.34'	M <sub>L</sub> 3.0

† Times are listed both as Local Time—Mountain Standard Time (MST) or Mountain Daylight Time (MDT)—and as Coordinated Universal Time (UTC).

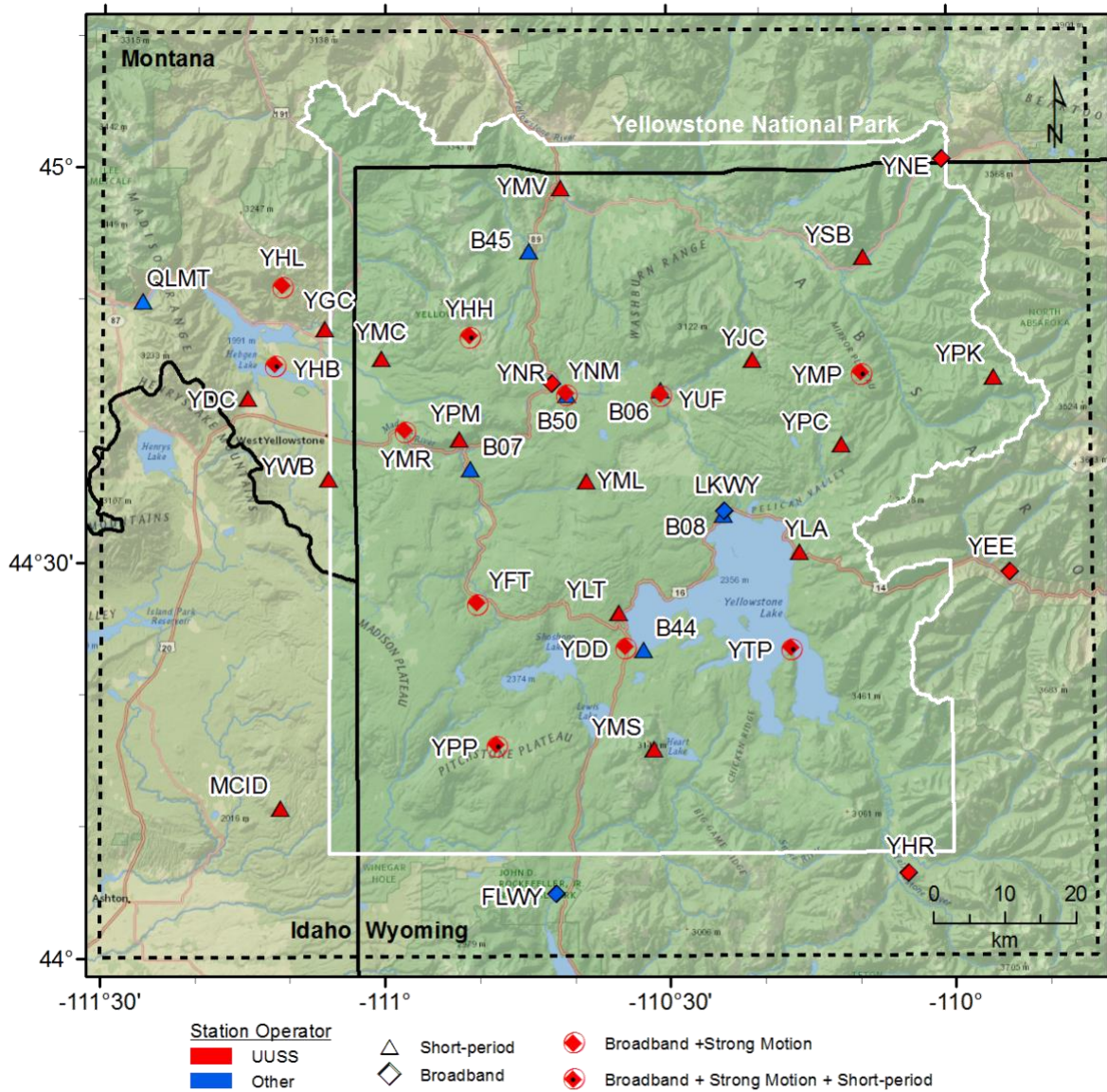
? Indicates on-line reports that appear questionable given the distance from the source

‡ *CIIM* indicates the availability of a Community Internet Intensity Map

(<http://earthquake.usgs.gov/earthquakes/dyfi>), compiled by the U.S. Geological Survey (USGS); *ShakeMap* indicates the availability of computer-generated maps of ground-shaking (<https://quake.utah.edu>), produced by the University of Utah Seismograph Stations (UUSS). Roman numerals correspond to the Modified Mercalli intensity scale. Unless otherwise indicated, felt information is from the USGS (1) CIIM reports and/or (2) PDE Monthly (or) Weekly Listing Files (<http://earthquake.usgs.gov/data/pde.php>).

§ Richter local magnitude ( $M_L$ ) or coda magnitude ( $M_C$ ) determined by UUSS. If labeled “NEIC,” data are from the National Earthquake Information Center of the USGS.

# Yellowstone Seismic Network September 30, 2021



**Figure 2.** Seismograph stations of the Yellowstone Seismic Network as of September 30, 2021.



**Table 2. Earthquakes in the Yellowstone Region: July 1–September 30, 2021**

DATE	ORIGIN TIME	LATITUDE	LONGITUDE	DEPTH	MAG	NO	GAP	DMN	RMS
210701	00:00:56.17	44°46.34'	110°55.26'	9.3	1.3W	19	139	6	0.18
210701	01:12:21.29	44°46.21'	110°55.35'	9.2	1.5W	22	105	6	0.18
210701	01:19:33.40	44°45.91'	110°55.54'	9.1	1.0W	16	102	6	0.18
210701	02:12:02.03	44°46.66'	110°55.06'	8.7	0.9W	16	145	5	0.12
210701	02:39:25.27	44°46.20'	110°55.03'	7.5	0.3	11	163	6	0.12
210701	02:51:36.26	44°46.63'	110°55.00'	8.7	0.5W	13	144	5	0.12
210701	04:07:17.57	44°45.90'	110°55.06'	7.6	0.3	13	159	6	0.16
210701	04:18:33.84	44°46.65'	110°55.07'	8.3	0.2	12	145	5	0.12
210701	05:09:20.51	44°39.28'	110°44.84'	9.8	1.1W	20	75	8	0.16
210701	05:10:55.55	44°39.19'	110°44.74'	7.5	0.2	14	86	9	0.15
210701	05:11:14.30	44°39.52'	110°43.78'	4.9	0.2	12	98	7	0.21
210701	05:11:27.84	44°40.20'	110°45.85'	5.1	-0.2	12	104	8	0.15
210701	05:13:01.38	44°39.68'	110°44.89'	8.4	1.2W	15	88	8	0.17
210701	05:13:07.17	44°40.12'	110°45.54'	2.3	1.1	8	181	8	0.10
210701	05:13:44.13	44°39.46'	110°44.68'	9.1	1.0W	20	67	8	0.17
210701	05:14:05.47	44°39.40'	110°42.84'	9.4	0.4	15	111	7	0.13
210701	05:14:22.18	44°38.93'	110°44.31'	7.9	-0.3	7	167	9	0.15
210701	05:15:29.71	44°38.94'	110°43.69'	8.9	0.4	13	98	8	0.21
210701	05:18:20.56	44°39.58'	110°44.15'	10.6	0.8W	18	92	7	0.17
210701	05:25:54.94	44°46.05'	110°55.31'	8.0	1.0W	18	103	6	0.14
210701	05:28:09.29	44°45.89'	110°55.32'	10.4	1.5W	20	103	6	0.15
210701	05:40:20.19	44°47.42'	111°00.08'	9.4	0.0	12	155	3	0.12
210701	06:17:44.52	44°45.93'	110°55.32'	8.2	1.0W	21	103	6	0.17
210701	06:45:41.90	44°46.20'	110°47.76'	2.8	1.0W	15	85	5	0.17
210701	07:39:56.82	44°45.54'	110°55.60'	5.8	-0.1	7	124	7	0.18
210701	07:40:12.26	44°46.39'	110°55.56'	7.4	-0.2	13	140	6	0.18
210701	08:03:29.84	44°46.41'	110°55.21'	8.6	0.6W	17	140	6	0.15
210701	08:45:04.74	44°39.73'	110°44.64'	8.0	-0.1	13	88	8	0.16
210701	08:45:24.13	44°44.23'	110°53.83'	2.3	-0.9	9	105	7	0.27
210701	09:13:45.73	44°46.43'	110°54.99'	8.9	-0.1	13	139	5	0.19
210701	09:17:26.84	44°46.73'	110°54.84'	9.4	0.1	15	147	5	0.17
210701	09:36:12.80	44°46.65'	110°55.26'	8.5	0.1	13	145	6	0.13
210701	09:52:39.11	44°45.76'	110°55.04'	7.4	-0.5	12	153	6	0.17
210701	09:53:03.71	44°44.76'	110°54.60'	5.6	-0.1	12	123	7	0.18
210701	10:00:01.42	44°34.39'	110°22.04'	5.7	0.2	8	177	3	0.18
210701	10:00:12.89	44°33.36'	110°21.99'	1.9	0.6	9	133	3	0.11
210701	10:00:46.84	44°33.22'	110°20.79'	0.9	0.6	8	125	4	0.21
210701	10:04:12.49	44°33.55'	110°22.23'	3.7	1.2	10	87	2	0.17
210701	10:39:10.68	44°46.42'	110°55.06'	8.5	-0.1	13	139	6	0.11
210701	10:39:17.26	44°46.17'	110°55.22'	8.0	0.3	14	135	6	0.15
210701	11:10:24.90	44°45.40'	110°54.68'	5.2	-0.2	11	140	6	0.11
210701	11:30:32.81	44°39.96'	110°45.75'	4.3	0.3W	13	108	8	0.16
210701	11:41:56.01	44°39.27'	110°44.82'	7.3	0.1	11	84	8	0.11
210701	12:30:17.59	44°46.17'	110°55.11'	7.6	0.8W	17	104	6	0.13
210701	12:30:48.29	44°46.30'	110°55.19'	9.8	1.1W	15	137	6	0.12

**Table 2. Earthquakes in the Yellowstone Region: July 1–September 30, 2021**

DATE	ORIGIN TIME	LATITUDE	LONGITUDE	DEPTH	MAG	NO	GAP	DMN	RMS
210701	12:53:13.18	44°39.52'	110°44.41'	8.6	0.1	14	88	8	0.14
210701	16:23:12.09	44°46.50'	110°55.06'	9.0	0.7W	17	142	6	0.16
210701	22:32:07.14	44°46.27'	110°53.19'	4.9	0.6	8	125	3	0.11
210702	01:41:30.54	44°44.92'	111°07.96'	10.8	0.3W	12	103	5	0.16
210702	02:27:29.17	44°46.58'	110°55.25'	9.2	0.3	10	144	6	0.08
210702	07:57:29.20	44°49.06'	110°50.72'	4.7	0.1	11	212	3	0.12
210702	08:47:56.22	44°10.04'	110°17.01'	11.3	0.7	13	143	18	0.10
210702	09:02:57.49	44°20.90'	110°40.39'	2.0	0.8	14	65	9	0.23
210702	09:03:50.31	44°21.19'	110°40.55'	2.0	0.2	12	102	9	0.24
210702	14:26:05.56	44°46.49'	110°55.02'	10.3	0.5	12	142	5	0.15
210702	15:16:43.47	44°46.39'	111°03.72'	11.4	0.9W	19	126	4	0.14
210702	15:29:04.56	44°47.16'	111°01.23'	7.7	-0.4	10	148	3	0.16
210702	15:29:22.88	44°46.93'	111°01.38'	8.9	0.0	16	145	3	0.16
210702	17:04:14.02	44°46.74'	111°09.79'	14.5	0.6W	13	129	4	0.15
210702	19:03:56.34	44°39.93'	110°44.91'	7.9	1.4W	21	74	8	0.16
210702	20:14:51.30	44°46.04'	110°55.13'	8.2	0.0	8	160	6	0.08
210703	04:23:41.77	44°48.76'	110°48.42'	4.7	0.7	12	196	4	0.10
210703	05:36:09.00	44°46.41'	110°48.27'	7.2	0.1	9	187	4	0.07
210703	07:54:12.63	44°43.64'	110°41.29'	3.9	1.8W	21	94	1	0.13
210703	10:03:03.95	44°44.15'	110°41.07'	3.5	0.7	15	165	2	0.18
210703	10:59:10.45	44°45.30'	111°07.64'	10.4	-0.2	12	72	5	0.15
210703	13:22:33.45	44°39.70'	110°44.69'	7.8	0.6	14	87	8	0.15
210703	13:31:36.43	44°39.60'	110°44.77'	9.8	2.6W	31	54	8	0.18
210703	14:52:49.13	44°39.48'	110°44.33'	9.9	1.4W	19	72	8	0.17
210703	14:52:59.61	44°39.16'	110°44.73'	8.9	1.2	17	76	9	0.17
210703	16:26:49.54	44°43.87'	110°40.92'	4.3	1.6W	17	74	2	0.15
210703	16:37:27.04	44°39.62'	110°45.49'	3.8	0.1	12	115	9	0.20
210703	18:00:59.69	44°40.37'	110°44.55'	8.2	0.0	10	102	7	0.21
210703	19:49:54.81	44°45.49'	110°54.91'	2.5	0.1	8	144	6	0.12
210704	00:11:15.14	44°39.97'	110°44.46'	9.1	0.5	14	108	7	0.16
210704	00:27:24.43	44°39.36'	110°44.14'	9.6	0.6	14	92	8	0.16
210704	02:44:11.09	44°39.72'	110°44.14'	7.0	-0.2	9	112	7	0.27
210704	02:44:46.90	44°39.79'	110°45.16'	5.9	0.5	11	112	8	0.16
210704	03:50:49.71	44°38.32'	110°23.22'	4.3	1.7W	14	106	9	0.15
210704	05:26:47.31	44°19.53'	110°33.35'	5.9	0.8	15	90	7	0.11
210704	05:30:20.94	44°19.50'	110°33.64'	5.8	0.9	12	87	7	0.07
210704	05:40:57.80	44°19.64'	110°33.95'	5.6	1.3W	15	84	8	0.09
210704	05:50:29.87	44°40.60'	110°03.46'	10.9	1.9	12	88	11	0.22
210704	06:20:58.64	44°19.56'	110°33.58'	4.8	0.6	16	88	7	0.12
210704	06:21:18.50	44°19.59'	110°33.73'	5.0	0.9	16	87	7	0.14
210704	07:00:41.15	44°42.64'	110°03.62'	4.6	0.5	8	160	8	0.14
210704	10:32:42.68	44°44.99'	110°55.33'	8.8	0.3	18	113	7	0.18
210704	10:40:54.48	44°45.11'	110°54.99'	8.6	-0.2	15	114	7	0.18
210704	10:42:01.46	44°44.75'	110°54.79'	6.0	0.1	11	124	7	0.13
210704	15:04:24.61	44°35.22'	110°43.08'	2.2	0.0	9	141	6	0.11

**Table 2. Earthquakes in the Yellowstone Region: July 1–September 30, 2021**

DATE	ORIGIN TIME	LATITUDE	LONGITUDE	DEPTH	MAG	NO	GAP	DMN	RMS
210704	15:10:04.65	44°36.83'	110°42.64'	4.7	0.8	8	175	5	0.11
210704	18:41:29.59	44°45.31'	111°05.93'	6.0	0.1	10	93	5	0.13
210704	20:37:03.57	44°41.17'	110°04.48'	10.8	1.3	8	200	9	0.19
210704	23:35:21.91	44°33.71'	110°44.20'	9.0	0.5	7	157	9	0.13
210705	03:54:40.69	44°45.49'	110°50.88'	3.5	0.3	10	112	3	0.09
210705	10:00:56.30	44°46.09'	110°51.03'	5.3	0.6W	13	83	2	0.13
210705	15:59:41.66	44°46.66'	110°50.97'	6.5	0.4	10	121	1	0.11
210705	20:32:28.67	44°26.24'	110°56.60'	5.2*	0.9	8	174	22	0.15
210706	05:33:32.19	44°45.86'	110°50.75'	4.0	0.1	11	119	3	0.14
210706	06:43:47.30	44°38.27'	110°01.39'	13.1	0.6	8	112	13	0.11
210706	11:32:36.49	44°46.18'	110°55.30'	7.5	0.1	16	135	6	0.17
210706	23:21:25.76	44°40.12'	110°02.57'	11.2	0.2	7	160	12	0.14
210707	02:49:12.11	44°46.97'	110°48.34'	7.1	0.1	9	201	4	0.08
210707	12:21:37.49	44°45.88'	110°50.65'	5.0	0.5	11	122	3	0.10
210707	14:14:49.22	44°44.94'	111°01.59'	9.3	0.1	16	101	2	0.18
210707	19:00:57.21	44°40.00'	110°27.63'	5.7	0.9	13	130	7	0.18
210707	20:52:28.18	44°45.62'	110°54.83'	5.3	0.2	10	148	6	0.11
210709	09:34:27.56	44°36.96'	110°43.60'	8.9	0.4W	11	82	7	0.10
210710	01:02:43.83	44°02.17'	110°20.67'	6.4*	1.3	11	202	29	0.11
210710	03:42:23.08	44°14.67'	110°47.07'	5.2	1.5	11	92	3	0.26
210710	03:51:16.65	44°14.69'	110°47.08'	1.8	1.3W	16	101	3	0.20
210710	03:51:54.58	44°14.29'	110°47.03'	3.9	1.6W	18	83	4	0.22
210710	04:01:06.80	44°15.03'	110°47.31'	2.8	1.2	14	100	3	0.19
210710	05:52:59.97	44°14.94'	110°46.89'	3.0	1.8W	13	99	3	0.12
210710	05:54:37.20	44°14.95'	110°47.08'	3.0	1.1W	14	100	3	0.12
210710	05:58:04.06	44°14.92'	110°47.38'	2.4	1.3W	12	112	3	0.12
210710	06:08:01.95	44°14.26'	110°47.29'	4.2	2.0W	14	83	4	0.30
210710	06:19:13.78	44°14.76'	110°47.66'	1.9	1.3	12	111	3	0.17
210710	06:22:15.01	44°14.80'	110°47.26'	3.2	0.7	12	101	3	0.23
210710	10:02:26.01	44°15.24'	110°46.60'	1.6	0.3	8	150	3	0.10
210710	10:02:48.89	44°15.06'	110°47.35'	2.8	1.8W	15	101	3	0.12
210710	10:03:53.64	44°14.70'	110°46.69'	3.4	1.9W	18	100	4	0.21
210710	10:18:17.62	44°15.24'	110°47.25'	1.9	1.1	12	99	2	0.15
210710	12:55:40.31	44°37.62'	110°43.56'	6.1	0.9	17	60	7	0.17
210710	12:56:10.39	44°38.77'	110°44.06'	3.1	0.5	16	130	9	0.22
210710	13:07:56.71	44°39.17'	110°44.80'	6.0	1.0W	17	124	9	0.19
210710	15:11:42.33	44°37.80'	110°20.50'	5.3	0.9	10	105	9	0.15
210711	05:36:56.49	44°39.62'	110°44.85'	7.4	0.5W	16	83	8	0.18
210711	08:24:39.45	44°48.32'	110°53.82'	6.3	-0.2	11	194	4	0.13
210711	19:47:06.49	44°39.66'	110°02.98'	7.9	0.6	8	96	12	0.20
210711	21:24:25.73	44°21.12'	110°39.76'	4.2*	1.4W	15	62	11	0.12
210711	21:26:22.17	44°21.06'	110°40.13'	3.9*	1.1	8	150	12	0.12
210711	21:26:39.71	44°21.21'	110°40.02'	1.8*	1.2	13	62	11	0.14
210712	11:49:38.17	44°30.25'	111°08.69'	15.5	1.4W	19	117	12	0.14
210712	17:34:12.08	44°39.78'	110°44.93'	9.1	2.7W	30	56	8	0.19

**Table 2. Earthquakes in the Yellowstone Region: July 1–September 30, 2021**

DATE	ORIGIN TIME	LATITUDE	LONGITUDE	DEPTH	MAG	NO	GAP	DMN	RMS
210712	17:36:45.22	44°39.92'	110°44.93'	7.8	0.7	18	109	8	0.15
210712	17:44:57.93	44°39.56'	110°45.29'	4.5	0.3	12	115	8	0.20
210712	20:57:23.18	44°39.55'	110°45.35'	4.3	0.8	12	116	9	0.17
210712	21:14:43.52	44°45.52'	111°02.45'	5.3	0.8	16	124	3	0.17
210713	10:41:32.33	44°39.31'	110°44.65'	8.1	0.5W	13	94	8	0.11
210714	02:21:36.76	44°44.86'	111°10.51'	13.3	1.6W	21	75	2	0.18
210714	20:56:27.55	44°46.60'	111°01.35'	9.1	0.4	9	193	2	0.09
210714	22:24:38.01	44°40.19'	111°11.69'	8.4	0.8	13	189	6	0.12
210715	05:32:28.32	44°27.15'	110°34.39'	3.7	0.6	11	122	2	0.12
210715	09:44:41.46	44°35.57'	110°43.74'	7.8	0.6	8	141	7	0.12
210715	11:43:14.04	44°39.40'	110°44.98'	10.4	1.6	27	82	8	0.18
210715	11:43:49.23	44°40.03'	110°45.00'	6.6	0.7	12	162	8	0.15
210715	11:45:47.95	44°39.58'	110°44.97'	8.8	1.0	20	116	8	0.18
210715	11:49:28.54	44°39.40'	110°44.86'	6.9	0.8	10	119	8	0.10
210715	16:13:02.91	44°23.02'	110°46.91'	2.6	1.2	12	80	9	0.25
210715	20:15:07.32	44°39.21'	110°25.86'	4.5	0.4	10	199	9	0.17
210715	21:42:01.46	44°27.10'	110°21.38'	6.9	2.0	12	92	9	0.15
210715	22:22:44.35	44°27.18'	110°21.94'	3.2	1.2	9	87	9	0.16
210715	23:52:07.42	44°27.06'	110°21.07'	6.9	2.0	15	94	8	0.15
210716	00:12:58.81	44°26.92'	110°20.97'	7.9	1.8	12	93	8	0.16
210716	00:13:38.30	44°26.99'	110°22.11'	2.0	1.2	8	107	9	0.24
210716	00:14:18.00	44°26.86'	110°21.75'	5.7	1.2	9	90	9	0.08
210716	00:21:21.92	44°27.13'	110°20.79'	7.2	1.5	11	96	8	0.16
210716	03:17:47.76	44°26.89'	110°20.72'	8.4	--	8	96	8	0.09
210716	03:23:37.82	44°26.87'	110°21.83'	3.0	0.6	8	118	9	0.09
210716	03:30:46.61	44°26.72'	110°21.15'	6.6	1.6	12	91	8	0.22
210716	03:35:43.21	44°26.72'	110°21.63'	2.2	1.3	8	90	8	0.33
210716	03:38:23.72	44°26.64'	110°21.23'	7.6	1.7	14	90	8	0.16
210716	03:38:52.38	44°26.82'	110°22.24'	1.7	0.8	10	120	9	0.25
210716	03:38:59.73	44°26.69'	110°21.22'	5.7	1.8	7	116	8	0.06
210716	03:49:28.85	44°26.63'	110°21.39'	7.2	1.8	13	88	8	0.12
210716	03:50:31.78	44°39.90'	110°39.04'	2.8	0.4	6	195	6	0.01
210716	03:50:45.01	44°39.19'	110°44.78'	7.6	0.2	6	178	9	0.08
210716	03:50:52.87	44°26.81'	110°21.92'	2.8	0.8	6	119	9	0.11
210716	03:54:45.53	44°26.59'	110°20.89'	7.9	1.5	13	92	8	0.13
210716	03:55:22.34	44°26.62'	110°21.87'	3.2	--	6	121	9	0.09
210716	03:55:40.79	44°26.71'	110°21.89'	2.4	1.8	9	120	9	0.07
210716	03:56:25.91	44°26.75'	110°21.80'	4.6	1.8W	11	88	9	0.07
210716	04:16:17.64	44°26.67'	110°21.49'	7.3	1.4	9	92	8	0.06
210716	04:33:54.47	44°26.74'	110°21.74'	1.7	1.5W	14	89	9	0.22
210716	04:36:19.13	44°26.76'	110°21.99'	2.7	1.1	7	120	9	0.09
210716	04:37:02.50	44°26.77'	110°21.18'	7.2	1.3	14	91	8	0.12
210716	04:46:51.09	44°27.44'	110°20.83'	5.1	1.7	12	98	9	0.26
210716	04:47:03.81	44°26.42'	110°21.69'	2.6	1.1	9	123	8	0.20
210716	05:12:03.88	44°26.67'	110°21.93'	4.6	0.9	9	96	9	0.06

**Table 2. Earthquakes in the Yellowstone Region: July 1–September 30, 2021**

DATE	ORIGIN TIME	LATITUDE	LONGITUDE	DEPTH	MAG	NO	GAP	DMN	RMS
210716	05:41:32.32	44°26.70'	110°21.40'	7.4	1.2	11	88	8	0.07
210716	05:44:57.64	44°26.67'	110°21.15'	6.4	1.2	14	91	8	0.17
210716	05:46:12.42	44°26.65'	110°21.16'	6.6	1.5	13	91	8	0.15
210716	05:48:10.13	44°26.52'	110°21.30'	6.2	1.7W	14	93	8	0.07
210716	05:50:53.97	44°26.67'	110°21.08'	7.7	2.0W	18	91	8	0.14
210716	05:53:21.03	44°26.84'	110°21.84'	2.0	1.7	11	88	9	0.16
210716	05:53:49.23	44°26.90'	110°21.85'	2.0	1.4	9	88	9	0.33
210716	05:58:23.41	44°26.38'	110°21.83'	2.1	1.3W	13	88	8	0.29
210716	06:06:08.16	44°27.16'	110°21.29'	2.1	2.6W	13	95	9	0.24
210716	06:09:20.15	44°27.22'	110°22.04'	4.6	1.5W	13	86	9	0.06
210716	06:09:54.42	44°26.98'	110°22.11'	2.2	2.0	12	86	9	0.09
210716	06:11:22.51	44°26.99'	110°21.86'	4.1	1.2	12	88	9	0.14
210716	06:12:16.26	44°26.38'	110°20.93'	7.8	1.3W	13	90	7	0.19
210716	06:13:21.57	44°26.54'	110°21.77'	2.0	1.8	12	89	8	0.18
210716	06:13:26.32	44°27.30'	110°21.39'	-1.2	2.2W	9	93	9	0.25
210716	06:17:42.65	44°27.24'	110°22.00'	2.5	1.4	10	86	9	0.19
210716	06:18:53.68	44°27.08'	110°21.95'	3.2	1.2	10	87	9	0.11
210716	06:25:55.29	44°26.58'	110°20.93'	7.7	1.8W	14	92	8	0.14
210716	06:26:10.33	44°26.66'	110°21.86'	3.0	1.8	7	121	9	0.13
210716	06:26:26.68	44°26.40'	110°21.68'	2.5	2.7W	15	89	8	0.33
210716	06:32:00.06	44°26.73'	110°20.23'	6.8	0.8	12	100	7	0.23
210716	06:34:49.98	44°26.41'	110°21.67'	2.0	1.5W	11	89	8	0.26
210716	06:43:44.35	44°26.14'	110°20.99'	6.9	1.2	14	83	7	0.19
210716	06:43:56.54	44°26.87'	110°22.07'	3.1	0.4	8	118	9	0.14
210716	06:44:26.40	44°26.41'	110°21.75'	2.9	0.3	7	123	8	0.14
210716	06:44:38.45	44°26.28'	110°20.79'	7.4	1.7W	18	80	7	0.18
210716	06:47:32.85	44°26.65'	110°20.79'	7.7	1.1W	8	100	8	0.07
210716	06:54:48.40	44°26.99'	110°21.09'	7.8	1.2	14	93	8	0.18
210716	06:56:51.32	44°26.48'	110°21.06'	7.3	2.1W	16	80	8	0.16
210716	06:57:44.11	44°26.82'	110°22.10'	2.6	1.5	10	85	9	0.10
210716	07:00:41.19	44°27.04'	110°22.06'	2.0	1.1	10	116	9	0.11
210716	07:01:03.69	44°26.99'	110°21.94'	4.5	--	9	116	9	0.09
210716	07:01:05.71	44°26.91'	110°20.81'	7.3	2.0W	13	95	8	0.19
210716	07:01:36.14	44°26.90'	110°22.17'	2.5	1.4	7	118	9	0.13
210716	07:02:13.62	44°26.72'	110°21.41'	6.3	1.7	16	89	8	0.18
210716	07:09:26.63	44°26.55'	110°21.48'	4.9	--	7	120	8	0.08
210716	07:09:28.44	44°26.46'	110°21.02'	6.8	1.9	15	90	8	0.19
210716	07:09:34.28	44°26.01'	110°21.87'	2.4	1.9W	6	130	8	0.20
210716	07:09:59.56	44°26.61'	110°21.90'	2.6	1.2	10	87	9	0.14
210716	07:13:53.92	44°26.85'	110°20.94'	7.6	1.4W	17	75	8	0.17
210716	07:19:50.86	44°26.47'	110°21.43'	6.4	1.3W	11	92	8	0.07
210716	07:26:43.88	44°26.28'	110°21.48'	5.8	1.3	8	91	8	0.09
210716	07:28:32.23	44°27.29'	110°21.36'	6.6	1.7W	18	93	9	0.20
210716	07:28:53.41	44°26.07'	110°21.55'	5.8	1.6	7	128	8	0.21
210716	07:30:42.37	44°26.80'	110°20.59'	7.5	1.4W	17	96	8	0.20

**Table 2. Earthquakes in the Yellowstone Region: July 1–September 30, 2021**

DATE	ORIGIN TIME	LATITUDE	LONGITUDE	DEPTH	MAG	NO	GAP	DMN	RMS
210716	07:31:07.34	44°26.51'	110°22.09'	3.8	1.9	12	84	9	0.08
210716	07:38:42.05	44°26.54'	110°20.80'	7.0	0.7	9	92	7	0.15
210716	07:45:00.21	44°26.05'	110°21.10'	6.8	2.3	15	86	7	0.10
210716	07:45:34.00	44°26.43'	110°21.90'	2.3	2.1	13	87	8	0.10
210716	07:51:47.20	44°26.46'	110°21.16'	6.8	1.4W	17	89	8	0.11
210716	07:54:49.68	44°26.51'	110°21.32'	7.4	1.1	10	88	8	0.09
210716	07:56:23.42	44°26.58'	110°21.34'	6.8	1.4W	17	89	8	0.12
210716	07:58:30.29	44°26.75'	110°20.74'	7.8	1.1W	12	95	8	0.14
210716	08:07:23.44	44°26.50'	110°22.12'	2.3	-0.3	7	124	9	0.23
210716	08:07:49.45	44°26.65'	110°21.90'	2.7	0.4	7	121	9	0.13
210716	08:08:19.00	44°27.04'	110°21.92'	2.7	0.2	8	115	9	0.12
210716	08:08:43.27	44°27.32'	110°22.82'	2.2	-0.4	7	115	10	0.15
210716	08:13:30.26	44°26.45'	110°21.90'	3.4	1.1	10	84	8	0.11
210716	08:15:34.42	44°26.97'	110°21.09'	7.3	1.5W	19	93	8	0.15
210716	08:21:50.49	44°27.07'	110°21.85'	4.4	1.5	8	114	9	0.07
210716	08:22:24.53	44°26.82'	110°22.04'	2.7	0.7	9	118	9	0.15
210716	08:22:51.18	44°26.91'	110°21.07'	8.1	1.1	16	93	8	0.19
210716	08:23:16.88	44°27.03'	110°21.40'	6.7	1.2	14	91	9	0.16
210716	08:24:33.87	44°26.77'	110°21.96'	2.8	0.8	8	119	9	0.14
210716	08:26:14.95	44°26.45'	110°20.90'	7.2	1.2	13	91	7	0.16
210716	08:33:23.12	44°25.89'	110°18.01'	9.2	1.1	8	149	5	0.17
210716	08:33:58.57	44°27.00'	110°22.00'	3.2	1.5	6	117	9	0.10
210716	08:35:52.26	44°26.67'	110°20.71'	7.6	1.0	14	94	8	0.19
210716	08:37:28.26	44°26.43'	110°21.37'	6.2	1.0	15	87	8	0.20
210716	08:48:00.75	44°27.18'	110°21.98'	3.0	0.8	12	87	9	0.17
210716	08:48:28.87	44°27.04'	110°22.19'	4.0	0.8	14	85	9	0.13
210716	08:48:51.59	44°27.03'	110°21.39'	3.7	0.8	10	93	9	0.19
210716	08:49:55.30	44°26.87'	110°20.89'	9.1	1.1W	13	95	8	0.09
210716	08:56:19.81	44°26.53'	110°22.32'	4.7	2.1W	15	82	9	0.22
210716	08:59:20.54	44°26.97'	110°21.12'	5.6	1.9W	27	93	8	0.21
210716	09:01:26.68	44°27.29'	110°22.19'	1.9	1.5W	15	84	10	0.30
210716	09:16:23.38	44°26.91'	110°21.91'	1.9	2.2	16	87	9	0.31
210716	09:17:02.53	44°26.67'	110°21.89'	2.2	1.9	12	87	9	0.32
210716	09:19:04.71	44°26.86'	110°22.15'	2.8	0.6	8	119	9	0.15
210716	09:19:36.57	44°27.05'	110°22.20'	2.2	0.5	9	116	9	0.19
210716	09:19:42.91	44°26.99'	110°22.14'	6.6	1.3W	11	85	9	0.16
210716	09:20:14.99	44°27.19'	110°21.70'	3.0	1.2	12	90	9	0.15
210716	09:21:18.77	44°26.78'	110°21.84'	2.8	0.7	13	88	9	0.16
210716	09:21:35.15	44°26.68'	110°20.76'	7.6	1.5W	15	94	8	0.20
210716	09:28:54.26	44°26.92'	110°20.96'	6.6	1.3W	20	93	8	0.21
210716	09:29:40.52	44°26.77'	110°21.61'	7.4	1.1	15	88	9	0.20
210716	09:35:28.12	44°26.92'	110°20.89'	6.5	1.1W	12	95	8	0.24
210716	09:36:45.66	44°27.03'	110°21.36'	7.4	1.2W	13	92	9	0.13
210716	09:40:46.92	44°26.63'	110°21.06'	6.9	2.1W	21	91	8	0.17
210716	09:43:51.41	44°27.07'	110°19.71'	8.8	1.6W	14	107	7	0.20

**Table 2. Earthquakes in the Yellowstone Region: July 1–September 30, 2021**

DATE	ORIGIN TIME	LATITUDE	LONGITUDE	DEPTH	MAG	NO	GAP	DMN	RMS
210716	09:44:51.52	44°26.64'	110°21.65'	6.7	1.5	12	86	8	0.15
210716	09:47:48.62	44°26.87'	110°21.99'	6.8	1.1W	11	85	9	0.12
210716	09:53:25.03	44°26.73'	110°21.18'	7.1	2.0	18	91	8	0.17
210716	10:03:54.99	44°26.85'	110°19.59'	6.7	1.3W	16	106	7	0.27
210716	10:20:48.43	44°26.84'	110°21.05'	7.8	1.1	15	93	8	0.18
210716	10:30:47.27	44°26.40'	110°20.99'	7.2	1.3W	15	89	7	0.24
210716	10:33:55.03	44°26.63'	110°21.47'	2.6	1.4	10	92	8	0.11
210716	10:34:40.40	44°26.38'	110°20.61'	7.2	2.4W	26	93	7	0.17
210716	10:38:46.91	44°26.22'	110°21.19'	5.9	1.4W	17	86	7	0.18
210716	10:40:00.64	44°28.07'	110°20.62'	2.0	0.5	10	101	8	0.17
210716	10:40:19.16	44°27.00'	110°21.19'	7.2	1.7W	17	92	8	0.18
210716	10:41:30.12	44°25.93'	110°21.47'	2.7	0.9	13	89	7	0.22
210716	10:52:19.55	44°26.63'	110°21.19'	2.1	1.1	8	118	8	0.26
210716	10:52:33.47	44°26.25'	110°22.07'	3.5	0.0	6	128	8	0.16
210716	10:52:56.26	44°26.68'	110°21.50'	5.8	0.3	6	118	8	0.04
210716	11:07:52.64	44°26.34'	110°21.52'	3.4	0.7	11	90	8	0.09
210716	11:12:04.83	44°27.30'	110°22.30'	3.9	1.1W	10	84	10	0.06
210716	11:34:45.63	44°27.68'	110°18.68'	5.3	0.7	8	119	7	0.10
210716	11:49:01.81	44°27.14'	110°21.99'	4.1	1.5	12	87	9	0.09
210716	11:49:42.02	44°26.62'	110°19.37'	8.8	0.9	8	123	7	0.08
210716	11:50:00.50	44°27.09'	110°21.86'	3.5	1.1	10	88	9	0.09
210716	11:50:11.32	44°27.14'	110°22.47'	2.8	0.2	8	116	10	0.15
210716	11:50:28.08	44°27.16'	110°21.84'	2.7	1.1	8	113	9	0.11
210716	11:52:37.74	44°27.11'	110°21.16'	7.8	2.0	11	94	9	0.12
210716	11:53:06.98	44°27.09'	110°21.47'	8.1	1.8	10	91	9	0.08
210716	11:56:36.52	44°27.13'	110°21.83'	4.9	1.4W	9	88	9	0.06
210716	11:58:21.33	44°27.25'	110°22.09'	4.3	1.6W	16	86	10	0.09
210716	12:03:35.09	44°27.17'	110°22.19'	4.5	0.9	10	85	10	0.06
210716	12:05:07.95	44°27.24'	110°21.96'	2.1	1.5W	11	87	9	0.24
210716	12:06:28.61	44°27.25'	110°21.88'	2.7	-0.1	6	112	9	0.08
210716	12:06:34.96	44°27.31'	110°21.14'	7.9	1.3W	10	95	9	0.08
210716	12:07:05.79	44°27.40'	110°21.91'	5.3	1.0	10	98	10	0.13
210716	12:08:22.23	44°27.31'	110°20.67'	7.7	1.2	9	99	8	0.20
210716	12:08:36.51	44°27.10'	110°22.30'	2.2	1.0	8	116	10	0.16
210716	12:11:28.38	44°27.16'	110°22.16'	2.0	0.5	8	114	10	0.39
210716	12:11:39.41	44°27.27'	110°22.32'	1.9	1.2W	9	114	10	0.30
210716	12:12:24.46	44°27.16'	110°21.65'	6.2	1.6W	14	90	9	0.20
210716	12:12:49.20	44°27.20'	110°22.17'	2.1	1.5	9	85	10	0.11
210716	12:15:25.78	44°27.10'	110°21.23'	7.4	2.2W	17	93	9	0.17
210716	12:15:58.62	44°27.27'	110°22.39'	2.9	1.3	8	114	10	0.19
210716	12:19:41.93	44°26.67'	110°22.13'	3.1	1.5W	10	85	9	0.10
210716	12:20:49.47	44°26.35'	110°21.30'	6.8	1.7W	14	87	8	0.17
210716	12:21:34.25	44°26.57'	110°21.92'	2.2	2.5	16	87	9	0.24
210716	12:22:41.27	44°26.98'	110°21.61'	7.3	2.2W	14	90	9	0.15
210716	12:23:21.06	44°26.54'	110°20.63'	7.7	2.3W	15	94	7	0.21

**Table 2. Earthquakes in the Yellowstone Region: July 1–September 30, 2021**

DATE	ORIGIN TIME	LATITUDE	LONGITUDE	DEPTH	MAG	NO	GAP	DMN	RMS
210716	12:30:39.10	44°26.43'	110°20.78'	7.9	2.0W	16	91	7	0.15
210716	12:38:46.47	44°26.95'	110°21.50'	5.8	1.0	6	115	9	0.04
210716	12:39:04.55	44°27.37'	110°22.34'	4.2	1.6W	11	85	10	0.11
210716	12:41:39.75	44°26.92'	110°20.70'	8.1	1.5W	13	96	8	0.17
210716	12:43:33.35	44°26.91'	110°22.01'	3.8	1.5	9	86	9	0.08
210716	12:44:39.31	44°27.07'	110°21.87'	6.4	1.4	11	88	9	0.15
210716	12:45:56.14	44°27.23'	110°21.31'	7.1	2.3W	17	93	9	0.17
210716	12:48:52.73	44°27.30'	110°21.97'	2.8	0.9	8	112	10	0.14
210716	12:49:41.84	44°26.69'	110°20.87'	7.4	2.7	16	93	8	0.14
210716	12:51:19.90	44°27.50'	110°23.58'	1.3*	1.3	7	135	11	0.14
210716	12:54:41.82	44°27.04'	110°20.97'	6.9	3.0W	27	94	8	0.17
210716	12:58:52.24	44°27.63'	110°21.91'	5.3	1.5	10	88	10	0.10
210716	12:59:41.36	44°27.14'	110°22.01'	2.1	1.6	10	86	9	0.21
210716	12:59:52.23	44°27.51'	110°22.06'	5.9	0.7	6	110	10	0.10
210716	13:00:18.62	44°27.40'	110°22.28'	6.0	0.9	5	112	10	0.12
210716	13:00:53.80	44°27.06'	110°21.52'	5.4	--	7	113	9	0.06
210716	13:00:54.28	44°26.70'	110°20.59'	7.0	2.6W	18	95	8	0.23
210716	13:05:22.96	44°27.50'	110°22.27'	2.2	2.1W	18	84	10	0.10
210716	13:06:29.65	44°26.71'	110°21.34'	6.7	1.8W	15	89	8	0.09
210716	13:08:12.53	44°27.49'	110°22.68'	2.0	1.8W	16	79	10	0.21
210716	13:12:02.55	44°27.25'	110°21.67'	6.8	1.1	12	90	9	0.17
210716	13:12:11.38	44°27.19'	110°22.17'	2.8	--	11	85	10	0.22
210716	13:13:33.92	44°27.25'	110°22.26'	2.1	1.6	11	85	10	0.31
210716	13:19:22.25	44°27.06'	110°22.70'	3.3	1.0	9	87	10	0.07
210716	13:20:37.02	44°27.09'	110°22.25'	1.9	0.9	8	99	10	0.27
210716	13:20:48.17	44°26.70'	110°19.04'	5.9	0.9	6	129	6	0.25
210716	13:22:57.29	44°25.12'	109°57.49'	11.5*	0.8	8	235	26	0.12
210716	13:23:43.48	44°27.32'	110°21.81'	5.1	1.2	7	111	9	0.12
210716	13:24:29.91	44°27.39'	110°21.53'	7.0	1.8W	11	92	9	0.14
210716	13:27:10.10	44°23.98'	110°14.78'	17.4	1.9	12	192	3	0.21
210716	13:33:59.17	44°29.43'	110°35.55'	2.0	1.2	11	130	6	0.30
210716	13:34:59.12	44°26.95'	110°21.88'	4.5	1.5	10	88	9	0.05
210716	13:39:17.07	44°27.10'	110°20.79'	7.2	--	12	96	8	0.14
210716	13:39:20.90	44°27.49'	110°22.11'	4.3	2.0W	9	85	10	0.12
210716	13:42:31.26	44°27.38'	110°21.61'	7.9	1.9W	19	91	9	0.15
210716	13:43:26.84	44°27.33'	110°22.27'	3.5	1.6W	10	83	10	0.14
210716	13:50:13.87	44°27.10'	110°21.32'	6.8	1.7W	12	92	9	0.08
210716	13:50:22.36	44°27.97'	110°20.44'	2.8	2.1W	7	104	8	0.12
210716	13:55:42.01	44°27.89'	110°17.21'	2.0	1.6	6	158	6	0.05
210716	13:59:28.94	44°27.51'	110°21.68'	5.8	1.0	7	108	10	0.05
210716	14:02:59.40	44°26.73'	110°22.31'	2.2	1.4	8	84	9	0.13
210716	14:06:05.27	44°27.44'	110°21.86'	4.1	1.1	7	129	10	0.02
210716	14:07:44.71	44°26.07'	110°20.25'	1.0	1.5W	12	113	6	0.16
210716	14:08:21.30	44°24.63'	110°17.80'	11.8	0.9	6	144	2	0.14
210716	14:11:42.74	44°27.18'	110°21.60'	6.4	1.2	10	91	9	0.07



**Table 2. Earthquakes in the Yellowstone Region: July 1–September 30, 2021**

DATE	ORIGIN TIME	LATITUDE	LONGITUDE	DEPTH	MAG	NO	GAP	DMN	RMS
210716	14:11:56.24	44°27.23'	110°21.36'	7.2	0.7	8	110	9	0.13
210716	14:12:51.25	44°27.05'	110°20.71'	7.2	3.1W	28	97	8	0.19
210716	14:19:55.96	44°27.55'	110°22.17'	2.1	1.2	9	84	10	0.24
210716	14:20:47.86	44°26.68'	110°21.35'	6.9	1.9W	13	94	8	0.15
210716	14:26:43.95	44°27.66'	110°22.12'	4.3	1.7W	16	85	10	0.09
210716	14:31:28.82	44°27.50'	110°21.60'	6.4	0.7	8	91	9	0.09
210716	14:31:54.48	44°27.00'	110°21.11'	4.9	1.5W	12	97	8	0.19
210716	14:40:10.60	44°27.28'	110°21.12'	6.9	2.4W	21	95	9	0.20
210716	14:42:18.94	44°27.46'	110°21.85'	4.2	1.7	13	88	10	0.19
210716	14:42:29.64	44°27.35'	110°22.19'	2.0	0.3	7	128	10	0.10
210716	14:42:46.01	44°27.42'	110°21.29'	5.7	2.5	12	95	9	0.11
210716	14:44:05.09	44°27.72'	110°21.93'	6.9	1.9W	15	87	10	0.11
210716	14:45:41.01	44°27.64'	110°19.89'	8.3	1.5	11	107	8	0.18
210716	14:47:35.53	44°26.87'	110°20.95'	8.7	1.0	9	94	8	0.11
210716	15:01:11.10	44°27.58'	110°21.93'	2.0	1.6W	11	87	10	0.14
210716	15:01:56.11	44°27.72'	110°21.91'	4.1	1.4W	11	87	10	0.06
210716	15:05:31.14	44°27.15'	110°21.42'	6.6	1.6	11	92	9	0.11
210716	15:05:56.24	44°26.94'	110°23.69'	2.1*	1.1	9	92	11	0.24
210716	15:06:17.08	44°27.13'	110°26.17'	14.4	--	6	144	12	0.09
210716	15:08:19.03	44°26.79'	110°21.13'	7.7	1.6	9	92	8	0.13
210716	15:08:26.20	44°25.98'	110°19.71'	9.7	2.0W	9	98	6	0.19
210716	15:14:13.56	44°27.42'	110°21.75'	5.6	1.3W	9	89	10	0.05
210716	15:18:04.32	44°27.55'	110°22.11'	4.1	--	9	85	10	0.07
210716	15:19:03.40	44°27.44'	110°21.97'	2.8	1.1	8	87	10	0.08
210716	15:22:33.66	44°27.41'	110°20.50'	5.7	2.9W	31	101	8	0.25
210716	15:26:17.04	44°27.38'	110°22.02'	3.3	0.8	8	86	10	0.09
210716	15:26:37.35	44°27.10'	110°22.07'	2.7	1.3	7	130	9	0.11
210716	15:26:52.97	44°27.20'	110°20.97'	2.3	1.2	7	122	9	0.11
210716	15:30:07.45	44°26.92'	110°21.67'	2.5	2.0W	8	91	9	0.16
210716	15:33:14.20	44°27.50'	110°21.86'	2.7	1.0	9	88	10	0.06
210716	15:36:18.95	44°27.48'	110°21.26'	6.6	1.4W	11	95	9	0.13
210716	15:38:49.85	44°27.53'	110°21.94'	3.5	1.3	11	87	10	0.07
210716	15:39:41.45	44°27.29'	110°22.04'	2.4	1.0	8	86	10	0.12
210716	15:40:20.66	44°26.90'	110°20.87'	7.8	1.6W	14	95	8	0.13
210716	15:41:04.05	44°26.60'	110°20.99'	10.1	1.7W	11	91	8	0.11
210716	15:42:27.45	44°26.99'	110°21.76'	2.9	1.4	13	90	9	0.21
210716	15:43:41.23	44°27.65'	110°21.39'	7.3	2.5W	13	93	9	0.14
210716	15:44:41.59	44°27.17'	110°24.72'	6.3	0.6	7	120	12	0.23
210716	15:45:04.69	44°27.15'	110°21.85'	2.2	1.9	7	105	9	0.32
210716	15:45:39.43	44°27.38'	110°21.76'	2.8	0.6	8	89	9	0.15
210716	15:45:56.70	44°27.61'	110°21.78'	2.2	0.4	7	122	10	0.13
210716	15:47:19.53	44°26.53'	110°21.83'	3.1	2.2W	23	84	8	0.16
210716	15:49:19.98	44°27.59'	110°22.06'	4.0	1.7W	9	85	10	0.14
210716	15:55:18.50	44°27.23'	110°21.34'	2.9	1.6	10	93	9	0.10
210716	15:55:58.62	44°27.12'	110°21.78'	2.9	0.6	7	89	9	0.12

**Table 2. Earthquakes in the Yellowstone Region: July 1–September 30, 2021**

DATE	ORIGIN TIME	LATITUDE	LONGITUDE	DEPTH	MAG	NO	GAP	DMN	RMS
210716	15:58:04.52	44°27.21'	110°21.86'	3.0	0.7	6	88	9	0.08
210716	16:00:39.10	44°27.39'	110°21.17'	4.8	1.3W	12	95	9	0.17
210716	16:01:09.56	44°27.67'	110°21.34'	6.6	2.7W	23	93	9	0.16
210716	16:01:26.97	44°27.39'	110°20.68'	2.7	2.5W	8	102	9	0.22
210716	16:06:58.87	44°27.32'	110°21.89'	2.7	0.8	6	87	10	0.08
210716	16:07:50.16	44°26.09'	110°20.55'	6.5	1.4	7	102	7	0.06
210716	16:14:47.47	44°27.40'	110°21.13'	7.7	1.5W	11	95	9	0.14
210716	16:18:05.30	44°26.40'	110°21.31'	1.9	1.7W	11	93	8	0.22
210716	16:23:54.73	44°26.65'	110°21.27'	2.3	1.1	9	95	8	0.12
210716	16:26:14.73	44°28.59'	110°19.60'	2.6	-0.2	6	112	6	0.20
210716	16:26:47.09	44°27.14'	110°20.22'	6.0	0.7	8	118	8	0.20
210716	16:27:21.89	44°26.78'	110°20.94'	7.9	0.8	8	128	8	0.12
210716	16:27:46.82	44°26.27'	110°20.94'	7.2	1.5W	14	90	7	0.12
210716	16:29:49.79	44°26.74'	110°21.87'	4.0	1.0	8	134	9	0.12
210716	16:31:11.68	44°27.33'	110°21.93'	2.0	1.5W	16	87	10	0.15
210716	16:34:04.97	44°26.49'	110°21.05'	6.3	1.6W	11	97	8	0.12
210716	16:35:32.20	44°26.68'	110°21.38'	2.5	0.4	7	133	8	0.14
210716	16:36:00.22	44°27.44'	110°21.78'	3.0	0.8	8	124	10	0.11
210716	16:38:47.00	44°26.61'	110°20.93'	7.7	2.1W	17	92	8	0.14
210716	16:44:31.09	44°25.93'	110°19.59'	9.1	1.4	10	100	6	0.17
210716	16:47:06.02	44°26.43'	110°20.79'	7.2	1.3	12	91	7	0.13
210716	16:51:52.05	44°27.23'	110°20.94'	9.3	1.2	11	96	9	0.10
210716	16:52:10.55	44°27.35'	110°19.63'	10.8	1.5	8	118	8	0.14
210716	16:54:58.17	44°25.20'	110°23.25'	5.6	1.3	8	104	9	0.05
210716	16:56:08.86	44°26.64'	110°21.79'	3.6	1.7	7	88	9	0.09
210716	16:58:19.52	44°26.73'	110°20.23'	7.5	1.1	10	100	7	0.16
210716	16:58:27.41	44°26.90'	110°21.03'	0.0	2.0	10	98	8	0.12
210716	17:00:20.77	44°27.26'	110°21.79'	4.8	1.1	8	89	9	0.06
210716	17:00:51.07	44°26.46'	110°21.13'	6.1	1.3W	11	96	8	0.13
210716	17:01:08.38	44°26.79'	110°21.36'	3.3	--	11	93	8	0.12
210716	17:04:50.39	44°27.10'	110°21.42'	6.6	1.1	11	93	9	0.08
210716	17:05:21.40	44°27.37'	110°21.95'	4.5	1.5	11	87	10	0.07
210716	17:19:02.93	44°26.62'	110°20.96'	5.5	2.0W	15	110	8	0.22
210716	17:19:41.48	44°28.30'	110°20.79'	5.1	1.5	9	120	10	0.14
210716	17:20:51.77	44°25.92'	110°21.33'	4.9	1.9W	12	100	7	0.14
210716	17:22:55.93	44°26.90'	110°21.62'	5.4*	2.5W	18	130	13	0.16
210716	17:23:27.32	44°26.98'	110°20.71'	1.8*	2.0W	8	187	13	0.14
210716	17:26:44.27	44°26.80'	110°21.36'	6.4	2.0W	8	107	8	0.07
210716	17:34:11.65	44°27.34'	110°21.91'	4.2	1.7W	10	105	10	0.09
210716	17:48:46.66	44°25.58'	110°22.43'	2.4	2.0W	8	97	8	0.38
210716	18:01:19.54	44°26.68'	110°21.08'	7.9	2.0W	16	92	8	0.16
210716	18:17:47.92	44°26.59'	110°21.29'	6.7	1.7W	7	106	8	0.18
210716	18:24:16.56	44°26.72'	110°21.21'	1.9*	1.8W	18	131	13	0.17
210716	18:32:47.74	44°26.10'	110°20.97'	5.7	1.2	13	106	7	0.21
210716	18:33:23.09	44°26.84'	110°20.93'	6.3	2.1W	14	111	8	0.21

**Table 2. Earthquakes in the Yellowstone Region: July 1–September 30, 2021**

DATE	ORIGIN TIME	LATITUDE	LONGITUDE	DEPTH	MAG	NO	GAP	DMN	RMS
210716	18:37:58.43	44°26.35'	110°18.45'	6.9	2.1W	13	140	6	0.17
210716	19:20:26.25	44°27.80'	110°21.68'	2.8	1.8W	8	89	9	0.27
210716	19:22:17.40	44°27.54'	110°20.80'	0.5	2.3	8	100	9	0.30
210716	19:23:51.22	44°27.24'	110°21.80'	6.0	0.9	11	88	9	0.15
210716	19:24:39.55	44°26.97'	110°21.64'	6.5	1.6	7	132	9	0.07
210716	19:30:09.64	44°27.26'	110°21.32'	5.6	1.3	10	94	9	0.15
210716	19:30:17.48	44°27.56'	110°21.89'	1.0	2.4W	9	124	10	0.13
210716	19:33:09.57	44°26.90'	110°21.16'	3.9	1.5	11	96	8	0.10
210716	19:33:53.51	44°26.98'	110°21.41'	7.8	1.8W	10	91	9	0.08
210716	19:34:01.25	44°26.29'	110°21.01'	8.2	2.2	7	97	7	0.09
210716	19:34:24.20	44°27.24'	110°20.55'	4.6	0.4	7	123	8	0.22
210716	19:35:30.55	44°26.80'	110°21.18'	2.8	1.7	6	154	8	0.10
210716	19:38:23.99	44°26.60'	110°21.19'	4.8	1.5W	10	95	8	0.16
210716	19:40:18.30	44°27.25'	110°21.84'	2.9	0.5	7	127	9	0.10
210716	19:41:02.52	44°26.69'	110°20.60'	7.0	2.5W	19	95	8	0.13
210716	19:44:20.27	44°27.02'	110°20.72'	7.1	3.2W	27	97	8	0.17
210716	19:45:52.10	44°27.63'	110°21.68'	2.0	1.6	11	90	9	0.32
210716	19:48:21.32	44°27.75'	110°21.64'	4.7	2.0W	9	90	9	0.08
210716	19:49:36.57	44°25.33'	110°22.61'	3.6	1.9	11	101	8	0.23
210716	19:49:51.14	44°27.41'	110°21.71'	2.0	1.4	8	89	9	0.11
210716	19:53:30.34	44°27.51'	110°21.24'	9.5	1.3	9	95	9	0.08
210716	19:59:33.30	44°27.60'	110°22.24'	2.1	1.3W	10	83	10	0.09
210716	19:59:58.40	44°27.20'	110°21.53'	5.8	0.4	6	126	9	0.04
210716	20:01:24.71	44°27.76'	110°20.97'	7.2	0.6	11	97	8	0.12
210716	20:01:28.61	44°27.71'	110°21.46'	3.3	1.7	9	129	9	0.12
210716	20:07:26.05	44°27.35'	110°21.31'	7.6	2.0W	14	93	9	0.15
210716	20:14:11.52	44°26.90'	110°21.59'	3.3	1.0	8	91	9	0.04
210716	20:23:26.92	44°27.64'	110°21.30'	7.2	2.0W	12	94	9	0.16
210716	20:28:08.19	44°26.37'	110°20.89'	6.6	1.0	10	99	7	0.07
210716	20:33:40.93	44°26.95'	110°21.93'	5.8	1.3	9	87	9	0.11
210716	20:35:23.31	44°27.58'	110°20.79'	8.4	1.4	9	100	9	0.17
210716	20:36:01.46	44°28.14'	110°21.33'	6.5	0.9	9	92	8	0.06
210716	20:40:24.71	44°27.32'	110°20.94'	7.7	1.5	12	97	9	0.21
210716	20:41:41.76	44°26.23'	110°19.83'	11.2	1.6W	9	100	6	0.25
210716	20:46:05.41	44°26.18'	110°20.67'	7.1	1.3W	12	91	7	0.12
210716	20:46:25.61	44°27.05'	110°20.90'	6.9	1.5W	13	95	8	0.19
210716	20:51:41.63	44°25.15'	110°18.63'	7.6	1.8W	9	126	4	0.12
210716	20:54:31.03	44°25.92'	110°20.91'	6.8	1.6W	10	96	7	0.09
210716	21:01:24.52	44°26.73'	110°21.33'	2.2	0.4	7	132	8	0.22
210716	21:01:39.20	44°26.87'	110°21.32'	2.7	1.2	7	95	8	0.15
210716	21:02:30.82	44°25.81'	110°17.29'	6.7	1.4	6	167	4	0.21
210716	21:09:26.58	44°26.73'	110°21.06'	6.1	1.0	8	92	8	0.12
210716	21:16:53.03	44°27.42'	110°21.79'	2.0	1.5W	12	89	10	0.18
210716	21:20:19.37	44°27.07'	110°21.66'	6.5	1.6W	12	90	9	0.10
210716	21:20:29.72	44°27.37'	110°21.30'	5.1	1.8W	8	95	9	0.13

**Table 2. Earthquakes in the Yellowstone Region: July 1–September 30, 2021**

DATE	ORIGIN TIME	LATITUDE	LONGITUDE	DEPTH	MAG	NO	GAP	DMN	RMS
210716	21:23:06.36	44°28.00'	110°21.88'	2.1	0.8	7	86	9	0.03
210716	21:23:47.17	44°27.73'	110°20.74'	6.0	1.3	12	100	8	0.23
210716	21:26:27.67	44°26.90'	110°20.79'	6.2	1.5W	11	101	8	0.26
210716	21:29:43.03	44°27.13'	110°20.95'	8.0	2.0W	12	95	8	0.11
210716	21:35:10.67	44°27.43'	110°21.84'	2.8	1.0	6	124	10	0.05
210716	21:44:05.32	44°26.83'	110°21.65'	4.4	1.4	12	90	9	0.11
210716	22:05:17.46	44°27.61'	110°21.09'	5.7	0.5	8	97	9	0.08
210716	22:07:38.11	44°26.84'	110°21.58'	2.3	1.7W	13	92	9	0.23
210716	22:41:22.15	44°27.32'	110°20.83'	8.4	1.5	11	97	9	0.17
210716	22:47:27.06	44°27.34'	110°21.51'	2.6	0.0	7	124	9	0.16
210716	22:47:57.19	44°27.55'	110°21.18'	7.8	1.0	9	96	9	0.16
210716	22:49:53.20	44°25.87'	110°20.05'	7.6	1.1	11	94	6	0.15
210716	22:52:42.76	44°27.67'	110°21.03'	6.1	1.4	10	97	9	0.10
210716	22:55:51.16	44°27.99'	110°21.33'	7.3	1.1	12	92	9	0.16
210716	23:13:17.03	44°27.45'	110°21.75'	6.1	1.5W	12	89	10	0.09
210716	23:13:41.22	44°26.52'	110°21.58'	2.9	0.5	8	121	8	0.14
210716	23:13:58.61	44°27.49'	110°21.53'	2.3	0.8	9	108	9	0.22
210716	23:26:00.61	44°28.01'	110°22.44'	3.0	1.1	11	81	10	0.08
210716	23:27:43.79	44°27.36'	110°22.16'	3.4	1.0	11	85	10	0.13
210716	23:28:30.29	44°27.29'	110°21.59'	7.7	1.2	10	91	9	0.07
210716	23:38:18.63	44°27.96'	110°22.41'	3.5	0.9	8	106	10	0.05
210716	23:39:24.42	44°27.44'	110°21.67'	5.8	1.3	9	90	9	0.06
210716	23:44:07.52	44°26.24'	110°21.50'	3.5	1.1	11	90	8	0.16
210716	23:44:49.98	44°26.09'	110°21.27'	4.1	1.1	11	92	7	0.08
210716	23:45:26.43	44°26.16'	110°21.02'	4.2	1.4	9	96	7	0.08
210716	23:47:33.74	44°26.03'	110°21.00'	4.5	1.2W	10	96	7	0.10
210716	23:53:20.01	44°25.89'	110°20.21'	7.5	1.1	13	92	6	0.11
210717	00:03:29.58	44°27.30'	110°22.73'	3.7	-0.1	7	115	10	0.07
210717	00:03:47.25	44°25.20'	110°22.51'	2.0	1.0	8	102	8	0.05
210717	00:03:52.00	44°27.03'	110°21.61'	5.8	0.8	7	114	9	0.09
210717	00:08:16.17	44°27.59'	110°22.48'	2.0	0.8	8	88	10	0.18
210717	00:08:27.60	44°24.19'	110°10.86'	3.6	1.1	7	231	8	0.05
210717	00:08:39.57	44°26.35'	110°21.18'	3.3	0.9	11	95	8	0.10
210717	00:09:22.17	44°26.11'	110°21.01'	3.5	0.3	10	96	7	0.10
210717	00:10:03.97	44°25.15'	110°19.47'	6.7	2.3W	21	92	4	0.22
210717	00:13:35.33	44°26.30'	110°20.76'	3.4	1.1	10	100	7	0.15
210717	00:14:17.56	44°26.22'	110°20.90'	3.5	0.4	8	97	7	0.11
210717	00:20:34.93	44°26.47'	110°20.33'	2.5	-0.1	6	128	7	0.15
210717	00:20:52.68	44°26.13'	110°20.01'	7.2	0.9	12	97	6	0.17
210717	00:21:27.12	44°27.53'	110°23.30'	2.9*	1.1	8	93	11	0.19
210717	00:26:23.27	44°27.23'	110°22.45'	2.9	1.0	8	115	10	0.14
210717	00:26:48.40	44°27.96'	110°21.78'	5.7	1.6W	12	87	9	0.28
210717	00:27:25.79	44°27.95'	110°22.12'	2.3	1.1	9	105	10	0.10
210717	00:33:49.81	44°27.60'	110°22.10'	2.6	1.0	8	124	10	0.07
210717	00:35:22.67	44°26.20'	110°20.58'	6.2	0.5	9	92	7	0.14

**Table 2. Earthquakes in the Yellowstone Region: July 1–September 30, 2021**

DATE	ORIGIN TIME	LATITUDE	LONGITUDE	DEPTH	MAG	NO	GAP	DMN	RMS
210717	00:37:50.48	44°27.12'	110°18.85'	2.1	0.9	7	132	7	0.16
210717	00:40:31.82	44°26.61'	110°21.28'	2.7	0.6	6	133	8	0.15
210717	00:40:37.48	44°26.46'	110°21.81'	2.9	1.5	11	88	8	0.12
210717	00:41:06.20	44°27.24'	110°22.02'	2.8	0.5	10	113	10	0.14
210717	00:41:14.97	44°27.33'	110°21.30'	7.4	1.5W	11	93	9	0.17
210717	00:41:48.64	44°27.19'	110°21.88'	5.2	1.3	11	88	9	0.19
210717	00:43:44.93	44°26.58'	110°20.22'	6.7	--	8	98	7	0.12
210717	00:44:01.40	44°27.70'	110°22.18'	2.6	2.0	10	107	10	0.16
210717	00:44:17.31	44°27.18'	110°22.12'	2.9	1.1	9	85	10	0.11
210717	00:45:22.08	44°27.67'	110°22.07'	2.2	1.4W	10	108	10	0.13
210717	00:45:35.08	44°27.73'	110°20.66'	6.4	3.6W	32	100	8	0.21
210717	00:48:08.45	44°27.83'	110°22.00'	2.0	2.4W	15	85	9	0.27
210717	00:50:55.52	44°27.43'	110°22.35'	2.9	1.4	7	112	10	0.13
210717	00:51:05.47	44°27.72'	110°22.02'	2.9	1.4	6	167	10	0.18
210717	00:51:27.04	44°27.42'	110°20.35'	7.2	1.8	7	107	8	0.08
210717	00:51:54.00	44°27.33'	110°21.64'	6.4	2.1	15	91	9	0.16
210717	00:52:26.05	44°26.94'	110°20.82'	2.1*	2.0	12	169	13	0.23
210717	00:53:20.73	44°26.44'	110°21.65'	2.9	1.2	8	123	8	0.12
210717	00:53:38.81	44°25.89'	110°21.69'	7.0	1.6W	17	90	8	0.13
210717	00:54:03.93	44°26.13'	110°22.17'	2.8	1.5	7	130	8	0.13
210717	00:54:19.91	44°26.11'	110°21.13'	6.2	2.3W	22	86	7	0.17
210717	00:57:35.96	44°27.18'	110°21.95'	3.3	1.3	11	87	9	0.15
210717	00:58:18.24	44°26.47'	110°21.51'	3.0	0.5	8	121	8	0.10
210717	00:58:43.31	44°25.96'	110°19.66'	7.1	1.3	11	100	6	0.11
210717	00:59:03.75	44°27.74'	110°22.25'	3.2	1.2	7	108	10	0.10
210717	00:59:53.91	44°26.22'	110°22.27'	2.7	0.6	6	145	8	0.16
210717	01:00:09.95	44°26.24'	110°20.21'	6.7	2.0	11	95	7	0.20
210717	01:00:27.04	44°26.28'	110°21.40'	2.6	1.3	7	91	8	0.14
210717	01:01:26.29	44°26.95'	110°22.20'	2.2	1.2	11	85	9	0.22
210717	01:02:00.70	44°27.05'	110°21.40'	4.0	1.6W	11	93	9	0.12
210717	01:04:04.58	44°27.13'	110°22.13'	2.1	1.1	6	115	9	0.20
210717	01:05:15.38	44°27.36'	110°18.90'	7.3	1.2	7	131	7	0.12
210717	01:05:37.92	44°28.07'	110°21.23'	7.5	2.7W	24	94	8	0.17
210717	01:07:22.36	44°27.68'	110°21.63'	2.5	1.0	6	120	9	0.13
210717	01:08:03.58	44°27.12'	110°22.44'	2.6	1.4	9	116	10	0.19
210717	01:09:42.77	44°27.85'	110°22.19'	3.4	0.7	7	107	10	0.05
210717	01:09:49.83	44°26.28'	110°20.16'	7.6	1.0	11	96	7	0.12
210717	01:10:14.88	44°27.37'	110°22.48'	2.9	0.0	6	216	10	0.11
210717	01:10:27.52	44°26.42'	110°22.09'	3.2	0.9	8	95	9	0.10
210717	01:13:08.58	44°28.04'	110°22.70'	3.6	0.7	8	106	10	0.11
210717	01:13:27.57	44°26.33'	110°22.03'	2.5	1.2	8	126	8	0.13
210717	01:15:29.65	44°26.47'	110°20.19'	8.4	2.0W	18	98	7	0.14
210717	01:18:44.50	44°26.29'	110°21.11'	6.7	1.8W	17	88	7	0.12
210717	01:20:18.26	44°27.02'	110°21.58'	4.2	1.8W	11	91	9	0.14
210717	01:20:52.47	44°27.13'	110°21.95'	2.8	1.1	8	97	9	0.13

**Table 2. Earthquakes in the Yellowstone Region: July 1–September 30, 2021**

DATE	ORIGIN TIME	LATITUDE	LONGITUDE	DEPTH	MAG	NO	GAP	DMN	RMS
210717	01:21:06.21	44°27.30'	110°21.79'	1.4	1.9W	7	89	9	0.12
210717	01:22:35.38	44°25.80'	110°21.43'	6.5	2.0W	14	90	7	0.10
210717	01:26:20.85	44°26.19'	110°21.64'	2.3	0.9	7	127	8	0.12
210717	01:26:39.04	44°27.79'	110°21.31'	7.3	2.1W	20	93	9	0.15
210717	01:28:35.23	44°27.82'	110°22.22'	2.9	0.0	8	107	10	0.15
210717	01:29:01.27	44°27.21'	110°21.46'	6.2	1.4W	12	91	9	0.18
210717	01:29:11.85	44°27.08'	110°22.27'	2.1	1.0	7	117	10	0.14
210717	01:31:35.22	44°27.02'	110°21.62'	4.3	1.5	10	91	9	0.06
210717	01:33:43.51	44°27.41'	110°21.78'	4.2	1.5W	10	89	10	0.08
210717	01:35:07.03	44°27.96'	110°21.95'	5.9	1.1	6	104	9	0.06
210717	01:37:29.01	44°26.25'	110°21.46'	5.8	1.9	9	91	8	0.05
210717	01:38:18.64	44°26.28'	110°24.53'	4.7*	1.6W	9	94	11	0.03
210717	01:40:30.55	44°26.46'	110°21.41'	3.8	0.8	10	92	8	0.07
210717	01:41:06.98	44°27.19'	110°21.73'	3.8	1.5	9	89	9	0.07
210717	01:48:01.95	44°27.86'	110°22.07'	3.0	1.5	11	85	10	0.08
210717	01:56:10.04	44°27.66'	110°20.74'	2.0	0.3	6	102	8	0.07
210717	01:56:22.17	44°26.32'	110°21.79'	2.7	1.1	7	126	8	0.09
210717	01:56:53.85	44°25.94'	110°19.86'	5.9	0.4	6	132	6	0.05
210717	02:01:44.97	44°26.91'	110°21.19'	6.4	1.6W	15	92	8	0.19
210717	02:04:36.68	44°26.83'	110°21.59'	4.3	1.3W	10	91	9	0.07
210717	02:07:30.44	44°27.04'	110°21.43'	4.9	-0.1	7	113	9	0.06
210717	02:11:30.14	44°28.01'	110°21.27'	6.6	0.9	8	93	9	0.04
210717	02:12:19.83	44°25.81'	110°21.66'	2.6	0.9	7	133	7	0.13
210717	02:12:34.43	44°27.72'	110°21.56'	2.8	1.4W	12	90	9	0.13
210717	02:14:11.87	44°27.55'	110°21.56'	5.4	1.1	7	107	9	0.10
210717	02:16:59.70	44°27.83'	110°21.94'	2.0	--	11	87	9	0.17
210717	02:19:29.43	44°27.15'	110°21.46'	4.5	1.4W	17	92	9	0.22
210717	02:21:59.16	44°26.98'	110°21.26'	5.6	1.3	12	95	8	0.13
210717	02:24:17.83	44°27.13'	110°21.26'	6.8	1.0	11	95	9	0.06
210717	02:25:28.52	44°26.83'	110°20.35'	5.4	1.8W	24	98	8	0.24
210717	02:33:45.37	44°26.87'	110°21.67'	4.4	1.3	12	90	9	0.10
210717	02:40:04.31	44°26.89'	110°20.66'	9.1	1.1	11	96	8	0.14
210717	02:41:37.18	44°27.08'	110°22.05'	2.7	0.1	8	115	9	0.13
210717	02:41:46.01	44°26.94'	110°21.68'	5.6	1.5W	10	90	9	0.19
210717	02:48:34.86	44°25.48'	110°21.35'	2.2	-0.2	8	96	7	0.28
210717	02:48:48.78	44°26.36'	110°20.58'	7.7	1.3	14	93	7	0.18
210717	02:52:06.41	44°27.35'	110°22.00'	2.1	0.8	10	87	10	0.24
210717	02:52:43.21	44°26.45'	110°21.85'	2.4	0.7	8	124	8	0.11
210717	02:53:13.34	44°24.14'	110°22.33'	5.8	1.8W	22	118	7	0.22
210717	02:54:31.06	44°26.33'	110°22.22'	2.0	1.5	11	86	9	0.39
210717	02:54:54.39	44°24.35'	110°22.82'	1.9	1.8W	16	115	8	0.26
210717	02:58:20.94	44°26.47'	110°20.61'	8.2	1.1	14	94	7	0.16
210717	03:03:05.72	44°27.40'	110°21.30'	7.8	0.9	13	94	9	0.20
210717	03:03:45.54	44°47.47'	110°55.85'	6.2	0.1	12	163	6	0.14
210717	03:06:57.57	44°25.84'	110°21.54'	4.0	1.8W	12	90	7	0.09

**Table 2. Earthquakes in the Yellowstone Region: July 1–September 30, 2021**

DATE	ORIGIN TIME	LATITUDE	LONGITUDE	DEPTH	MAG	NO	GAP	DMN	RMS
210717	03:08:09.96	44°25.70'	110°21.24'	6.7	1.4W	17	90	7	0.14
210717	03:09:10.00	44°25.79'	110°20.97'	6.8	2.0W	17	88	7	0.11
210717	03:13:26.46	44°27.11'	110°21.98'	2.4	0.9	12	87	9	0.09
210717	03:13:52.18	44°25.72'	110°22.00'	4.0	1.6	11	93	8	0.13
210717	03:16:16.34	44°26.95'	110°21.44'	7.2	1.5W	17	90	9	0.16
210717	03:22:38.19	44°26.47'	110°21.15'	6.9	1.4	10	89	8	0.17
210717	03:41:21.03	44°25.08'	110°22.92'	3.3	1.4	14	105	8	0.10
210717	03:41:35.13	44°26.16'	110°19.75'	2.5	0.2	6	115	6	0.09
210717	03:53:07.82	44°28.01'	110°20.86'	6.3	0.9	11	99	8	0.16
210717	03:53:30.12	44°26.03'	110°20.57'	7.6	1.7	14	90	7	0.14
210717	03:55:40.72	44°24.52'	110°22.41'	6.8	1.5W	13	112	7	0.11
210717	03:55:58.87	44°24.80'	110°23.07'	2.7	1.6	8	157	8	0.10
210717	03:56:12.74	44°27.09'	110°22.25'	2.8	1.1	8	116	10	0.13
210717	03:58:11.43	44°27.00'	110°21.88'	3.0	0.9	8	88	9	0.05
210717	03:58:29.45	44°24.89'	110°24.43'	-2.2	1.6	7	125	10	0.11
210717	04:02:59.78	44°27.90'	110°20.96'	6.1	2.0W	14	97	8	0.25
210717	04:09:10.85	44°27.48'	110°20.95'	3.8	1.3W	16	98	9	0.14
210717	04:11:09.19	44°26.99'	110°21.53'	6.7	1.5W	18	90	9	0.14
210717	04:19:42.76	44°25.28'	110°23.03'	3.5	1.5W	14	102	9	0.13
210717	04:23:24.32	44°27.62'	110°20.41'	7.4	1.8W	16	103	8	0.16
210717	04:35:39.33	44°25.32'	110°22.06'	6.7	1.6W	19	71	7	0.20
210717	04:44:54.81	44°24.71'	110°22.37'	2.2	0.8	9	157	7	0.24
210717	04:45:22.07	44°24.74'	110°22.38'	7.1	1.5W	16	108	7	0.15
210717	04:49:47.70	44°24.46'	110°22.65'	5.8	1.6	7	113	8	0.02
210717	04:49:57.83	44°24.87'	110°22.96'	2.0	1.5	9	108	8	0.17
210717	04:55:31.39	44°26.07'	110°21.19'	3.9	0.9	8	94	7	0.09
210717	04:55:44.79	44°27.86'	110°19.06'	8.0	0.5	8	126	7	0.09
210717	04:59:35.94	44°22.47'	110°24.46'	-1.2	0.7	8	138	10	0.14
210717	05:01:29.03	44°28.11'	110°21.50'	8.2	0.9	13	90	9	0.16
210717	05:02:42.27	44°25.99'	110°21.17'	5.1	1.7W	12	93	7	0.09
210717	05:03:43.85	44°25.63'	110°20.67'	8.2	1.6W	12	97	6	0.13
210717	05:08:09.91	44°25.51'	110°04.32'	14.7	2.0W	7	292	17	0.20
210717	05:08:31.37	44°24.54'	110°03.16'	11.5	2.0W	8	258	19	0.15
210717	05:10:56.24	44°27.09'	110°21.56'	7.4	1.1	10	92	9	0.08
210717	05:14:35.92	44°27.02'	110°21.43'	6.9	--	10	93	9	0.06
210717	05:15:48.33	44°27.08'	110°21.87'	4.5	1.0	11	88	9	0.04
210717	05:18:31.89	44°27.21'	110°21.91'	4.8	1.3W	11	88	9	0.05
210717	05:19:48.06	44°27.92'	110°20.85'	2.2	0.9	8	98	8	0.15
210717	05:26:06.20	44°27.58'	110°21.56'	7.1	1.1	14	91	9	0.17
210717	05:26:23.17	44°27.32'	110°22.35'	2.8	0.3	8	113	10	0.14
210717	05:27:41.19	44°25.34'	110°19.56'	7.5	2.8W	31	69	5	0.23
210717	05:33:29.77	44°26.99'	110°21.24'	1.7	1.6W	16	95	8	0.16
210717	05:47:02.79	44°26.59'	110°16.90'	-0.8	0.3	5	176	6	0.04
210717	05:47:33.05	44°25.05'	110°23.02'	4.7	0.8	9	106	8	0.12
210717	05:54:52.50	44°26.45'	110°21.53'	4.0	0.8	14	91	8	0.18

**Table 2. Earthquakes in the Yellowstone Region: July 1–September 30, 2021**

DATE	ORIGIN TIME	LATITUDE	LONGITUDE	DEPTH	MAG	NO	GAP	DMN	RMS
210717	05:59:01.35	44°26.32'	110°20.35'	7.6	2.7W	31	67	7	0.21
210717	06:04:43.15	44°27.61'	110°21.18'	1.9	--	8	96	9	0.12
210717	06:06:04.78	44°25.68'	110°22.13'	1.9	0.9	12	94	8	0.27
210717	06:06:28.31	44°26.11'	110°21.78'	4.0	1.6W	16	88	8	0.12
210717	06:27:48.55	44°26.79'	110°21.82'	2.5	0.9	9	118	9	0.12
210717	06:28:03.43	44°28.29'	110°22.92'	2.3	-0.2	7	110	10	0.11
210717	06:29:32.79	44°26.20'	110°21.30'	2.2	--	10	92	7	0.12
210717	06:29:38.27	44°26.26'	110°21.59'	2.0	1.5	8	89	8	0.25
210717	06:30:20.31	44°25.97'	110°21.13'	4.9	1.4W	13	86	7	0.16
210717	06:30:27.62	44°25.94'	110°21.67'	3.6	1.9W	10	89	8	0.15
210717	06:37:58.21	44°26.03'	110°20.23'	7.0	1.3W	18	94	6	0.19
210717	06:42:09.71	44°26.55'	110°22.40'	2.7	-0.4	7	125	9	0.17
210717	06:42:25.50	44°26.13'	110°20.64'	6.8	1.0	12	90	7	0.16
210717	06:43:32.82	44°25.58'	110°20.90'	6.8	1.0	12	94	6	0.13
210717	06:43:40.78	44°26.24'	110°21.19'	2.8	0.7	8	124	7	0.15
210717	06:50:08.36	44°26.63'	110°21.87'	2.3	0.4	8	88	9	0.12
210717	06:50:16.65	44°25.86'	110°20.94'	6.4	1.1	9	95	7	0.12
210717	07:01:31.05	44°46.44'	110°50.97'	7.3	0.6W	15	117	2	0.13
210717	07:06:38.92	44°25.92'	110°19.95'	7.3	1.7W	20	79	6	0.22
210717	07:09:20.66	44°25.69'	110°23.32'	2.8	1.1	7	141	9	0.15
210717	07:09:31.10	44°26.77'	110°21.83'	2.1	1.6W	14	88	9	0.25
210717	07:11:06.62	44°26.82'	110°21.90'	2.4	1.5	10	119	9	0.14
210717	07:11:16.42	44°26.65'	110°18.08'	-0.1	1.7	6	147	6	0.16
210717	07:13:19.59	44°26.95'	110°21.93'	5.4	1.4W	17	87	9	0.15
210717	07:20:02.82	44°26.13'	110°21.08'	4.2	1.6W	14	95	7	0.07
210717	07:21:13.05	44°25.69'	110°21.57'	2.2	1.4W	14	92	7	0.12
210717	07:25:22.59	44°27.03'	110°21.74'	2.8	0.0	8	115	9	0.08
210717	07:25:51.09	44°27.14'	110°21.82'	3.1	0.4	12	89	9	0.08
210717	07:26:14.29	44°26.27'	110°21.38'	2.9	0.5	8	124	8	0.14
210717	07:29:47.64	44°26.33'	110°20.95'	7.3	0.9	10	89	7	0.15
210717	07:30:42.52	44°26.88'	110°21.13'	7.0	1.4W	15	92	8	0.22
210717	07:33:00.26	44°26.08'	110°21.36'	4.1	1.1	11	92	7	0.14
210717	07:33:30.81	44°25.90'	110°20.76'	6.4	1.3	16	87	7	0.17
210717	07:36:32.37	44°26.93'	110°21.49'	7.2	1.1W	12	90	9	0.19
210717	07:44:20.89	44°25.96'	110°21.24'	4.5	0.8	12	92	7	0.13
210717	07:44:34.67	44°27.93'	110°20.74'	2.3	0.4	8	100	8	0.15
210717	07:48:25.86	44°27.05'	110°21.64'	7.0	0.6	14	90	9	0.18
210717	07:48:45.91	44°25.90'	110°21.47'	2.6	0.2	7	130	7	0.15
210717	07:58:56.70	44°27.32'	110°21.44'	6.3	0.7	13	92	9	0.17
210717	08:23:01.44	44°25.62'	110°20.26'	7.8	1.1	12	88	6	0.16
210717	08:49:52.15	44°24.82'	110°22.61'	5.4	2.1W	16	108	8	0.10
210717	08:50:15.35	44°25.12'	110°22.74'	2.8	2.4	9	104	8	0.14
210717	08:53:37.25	44°27.88'	110°21.98'	4.5	1.4W	11	86	9	0.05
210717	08:58:52.60	44°24.88'	110°22.51'	5.1	1.5W	15	107	8	0.13
210717	08:59:23.30	44°24.95'	110°22.72'	2.9	0.5	9	153	8	0.14



**Table 2. Earthquakes in the Yellowstone Region: July 1–September 30, 2021**

DATE	ORIGIN TIME	LATITUDE	LONGITUDE	DEPTH	MAG	NO	GAP	DMN	RMS
210717	09:01:48.50	44°24.90'	110°22.65'	1.9	1.1W	10	106	8	0.23
210717	09:02:04.32	44°24.22'	110°23.17'	3.5	2.0	8	148	8	0.17
210717	09:02:20.18	44°23.75'	110°23.38'	2.3	1.6	9	177	8	0.26
210717	09:08:57.20	44°28.28'	110°23.72'	5.0	1.3W	11	92	10	0.13
210717	09:09:20.07	44°27.99'	110°22.16'	6.6	-0.4	7	105	10	0.10
210717	09:13:30.12	44°27.24'	110°20.69'	7.0	1.4W	17	98	8	0.23
210717	09:14:04.25	44°24.51'	110°22.76'	2.7	0.1	7	162	8	0.16
210717	09:17:13.44	44°24.29'	110°22.31'	6.5	2.4W	21	73	7	0.12
210717	09:17:34.76	44°24.61'	110°22.84'	1.8	2.6W	16	112	8	0.21
210717	09:27:59.55	44°27.31'	110°21.62'	2.0	1.9W	24	91	9	0.19
210717	09:30:21.56	44°27.68'	110°21.95'	5.6	--	9	87	10	0.04
210717	09:36:55.04	44°27.06'	110°20.34'	7.4	1.8W	11	100	8	0.18
210717	09:40:29.42	44°26.62'	110°21.65'	2.8	0.7	14	90	8	0.27
210717	09:41:07.88	44°26.70'	110°20.03'	6.9	1.4W	14	101	7	0.12
210717	09:41:28.96	44°27.74'	110°22.49'	2.9	0.6	8	109	10	0.20
210717	10:13:46.60	44°27.81'	110°22.34'	3.3	0.5	8	87	10	0.13
210717	10:14:23.08	44°27.57'	110°21.88'	6.0	0.4	7	109	10	0.08
210717	10:23:15.95	44°25.05'	110°22.79'	3.1	1.1	11	105	8	0.17
210717	10:23:41.83	44°25.63'	110°20.69'	2.8	0.5	7	131	6	0.10
210717	10:33:46.09	44°25.79'	110°21.42'	2.2	0.5	8	132	7	0.08
210717	10:34:04.70	44°28.28'	110°22.62'	2.1	1.1	10	103	10	0.10
210717	10:34:44.44	44°25.63'	110°19.99'	7.3	1.5W	19	92	5	0.19
210717	10:36:31.56	44°25.61'	110°20.44'	6.4	1.3	11	101	6	0.08
210717	10:40:30.12	44°25.97'	110°20.84'	4.7	1.6	16	84	7	0.05
210717	10:40:40.35	44°25.78'	110°21.03'	2.7	1.2	7	131	7	0.11
210717	10:53:50.31	44°26.56'	110°20.53'	6.4	1.4W	15	96	7	0.15
210717	10:58:55.17	44°26.05'	110°21.47'	2.7	0.1	7	128	7	0.05
210717	10:59:21.64	44°27.54'	110°21.82'	5.8	0.9W	12	88	10	0.10
210717	11:04:03.48	44°25.76'	110°20.50'	7.0	1.4W	24	88	6	0.18
210717	11:04:22.89	44°26.14'	110°20.77'	5.0	1.0	9	99	7	0.16
210717	11:04:33.69	44°26.32'	110°20.80'	2.6	0.6	8	100	7	0.16
210717	11:21:27.26	44°26.81'	110°20.39'	5.9	1.8W	20	98	8	0.14
210717	11:25:24.91	44°26.19'	110°21.36'	4.1	0.5	12	92	8	0.12
210717	11:25:41.17	44°26.22'	110°21.75'	2.9	-0.1	6	126	8	0.12
210717	11:27:16.09	44°25.82'	110°21.45'	4.9	0.3	11	90	7	0.11
210717	11:27:20.48	44°23.93'	110°22.80'	2.1	1.4W	11	122	8	0.28
210717	11:31:10.96	44°25.12'	110°22.66'	3.6	1.4W	12	104	8	0.08
210717	11:51:11.51	44°28.55'	110°22.77'	2.1	0.8	9	100	10	0.09
210717	12:07:02.51	44°25.86'	110°20.48'	7.4	1.3	13	90	6	0.14
210717	12:07:16.57	44°27.21'	110°21.87'	2.8	0.6	6	128	9	0.09
210717	12:41:31.63	44°25.00'	110°22.68'	4.8	0.8	9	105	8	0.07
210717	12:43:56.86	44°28.75'	110°23.04'	5.5	1.5W	20	73	9	0.15
210717	12:59:46.59	44°26.23'	110°20.27'	7.8	1.4	14	95	7	0.14
210717	13:07:25.41	44°29.10'	110°22.60'	5.7	1.5W	17	74	9	0.18
210717	13:13:12.69	44°27.45'	110°22.11'	3.2	0.2	8	111	10	0.11

**Table 2. Earthquakes in the Yellowstone Region: July 1–September 30, 2021**

DATE	ORIGIN TIME	LATITUDE	LONGITUDE	DEPTH	MAG	NO	GAP	DMN	RMS
210717	13:13:52.35	44°45.02'	110°50.63'	2.0	-0.7	9	113	4	0.20
210717	13:17:28.24	44°27.27'	110°22.14'	2.7	0.0	8	113	10	0.14
210717	13:17:41.03	44°27.14'	110°22.10'	2.4	1.2	12	86	9	0.17
210717	13:18:24.47	44°27.61'	110°22.74'	2.6*	0.9	8	105	11	0.15
210717	13:20:41.78	44°28.90'	110°22.75'	4.9	1.5W	16	75	9	0.19
210717	14:02:02.84	44°26.84'	110°20.32'	4.9	1.6W	15	99	8	0.13
210717	14:05:43.12	44°25.81'	110°20.66'	6.8	1.6W	20	88	6	0.15
210717	14:14:57.64	44°28.47'	110°22.12'	6.1	1.2W	14	83	9	0.15
210717	14:15:23.32	44°25.97'	110°20.57'	2.9	-0.2	5	208	6	0.13
210717	14:20:02.96	44°28.81'	110°23.19'	4.3	2.0W	20	72	9	0.13
210717	14:21:34.55	44°28.79'	110°23.33'	4.0	1.9W	20	70	9	0.17
210717	14:22:49.61	44°25.88'	110°21.24'	2.6	0.7	8	92	7	0.14
210717	14:23:11.29	44°28.97'	110°23.21'	3.0	1.9W	22	71	9	0.17
210717	14:23:23.55	44°28.76'	110°24.00'	2.3	1.7	7	107	9	0.10
210717	14:25:59.39	44°28.42'	110°22.29'	2.9	--	8	100	9	0.08
210717	14:26:00.05	44°28.55'	110°21.97'	6.9	1.8W	14	83	9	0.16
210717	14:26:11.92	44°28.01'	110°22.47'	2.9	1.3	7	105	10	0.23
210717	14:28:07.49	44°25.79'	110°20.10'	7.5	1.9W	18	92	6	0.18
210717	14:46:47.37	44°25.98'	110°20.51'	7.8	1.8W	15	91	6	0.14
210717	14:47:14.54	44°26.41'	110°20.22'	2.5	1.4	7	114	7	0.13
210717	14:49:08.87	44°28.22'	110°21.45'	3.3	1.7W	19	90	8	0.29
210717	14:49:51.55	44°28.37'	110°22.21'	4.2	0.8	14	81	9	0.14
210717	14:50:06.98	44°28.08'	110°22.02'	2.0	1.6W	17	85	9	0.28
210717	14:50:41.49	44°28.32'	110°22.50'	6.6	1.4	16	80	10	0.24
210717	14:52:45.07	44°28.43'	110°22.11'	4.8	1.4W	12	82	9	0.13
210717	14:54:29.18	44°28.85'	110°23.32'	2.7	1.3W	12	71	9	0.07
210717	14:54:54.22	44°28.18'	110°21.88'	2.8	0.5	8	116	9	0.17
210717	14:55:04.93	44°28.25'	110°22.28'	1.8	1.1	11	81	9	0.22
210717	15:01:57.84	44°26.75'	110°21.24'	7.4	1.4W	8	95	8	0.09
210717	15:17:08.14	44°28.25'	110°21.33'	6.7	1.9W	17	91	8	0.21
210717	15:17:58.67	44°28.42'	110°21.59'	6.1	2.1W	24	87	8	0.21
210717	15:19:23.27	44°26.00'	110°20.45'	7.8	1.4	11	92	6	0.12
210717	15:42:39.92	44°29.09'	110°23.23'	3.5	1.3	12	70	8	0.15
210717	15:45:46.19	44°27.60'	110°21.71'	8.6	0.9	11	90	9	0.16
210717	15:52:27.37	44°25.71'	110°20.86'	5.2	0.5	7	125	6	0.18
210717	15:52:46.17	44°25.61'	110°20.26'	7.5	2.0W	20	86	6	0.15
210717	15:58:09.00	44°25.66'	110°19.95'	7.7	1.4W	14	93	5	0.14
210717	16:40:02.86	44°28.83'	110°22.77'	3.1	0.6	6	112	9	0.06
210717	16:46:06.73	44°26.86'	110°21.48'	4.6	1.1	10	92	9	0.10
210717	16:49:22.34	44°27.54'	110°22.46'	5.5	1.0	6	126	10	0.09
210717	16:49:53.81	44°26.30'	110°20.15'	2.8	1.0	6	129	7	0.11
210717	17:00:02.30	44°28.50'	110°23.03'	3.6	1.3	14	74	10	0.14
210717	17:09:06.01	44°26.19'	110°20.39'	7.8	0.6	10	93	7	0.15
210717	17:15:24.62	44°25.76'	110°20.45'	7.6	1.2	12	89	6	0.16
210717	17:16:23.52	44°26.01'	110°20.54'	7.8	1.3W	10	90	7	0.09

**Table 2. Earthquakes in the Yellowstone Region: July 1–September 30, 2021**

DATE	ORIGIN TIME	LATITUDE	LONGITUDE	DEPTH	MAG	NO	GAP	DMN	RMS
210717	17:23:59.43	44°28.48'	110°22.93'	5.6	1.1	11	75	10	0.18
210717	17:29:01.64	44°28.92'	110°23.48'	2.0	0.8	8	75	9	0.31
210717	17:31:48.60	44°26.54'	110°21.48'	4.7	1.7W	10	91	8	0.07
210717	17:35:47.34	44°28.90'	110°23.50'	2.0	1.0	9	75	9	0.14
210717	17:42:16.76	44°28.83'	110°23.40'	3.5	1.2W	10	71	9	0.09
210717	17:43:28.28	44°28.92'	110°23.18'	1.9	1.5W	12	72	9	0.16
210717	17:46:03.75	44°25.92'	110°20.92'	7.0	0.8	12	86	7	0.16
210717	17:54:37.59	44°25.59'	110°20.46'	7.4	1.1	10	87	6	0.07
210717	18:27:50.39	44°26.63'	110°20.38'	6.0	1.3	11	97	7	0.18
210717	18:51:20.28	44°28.94'	110°23.38'	3.5	0.8	9	76	9	0.09
210717	18:51:46.86	44°28.98'	110°23.24'	2.1	1.1	9	77	9	0.08
210717	18:56:18.69	44°26.36'	110°19.19'	2.3	0.0	7	126	6	0.06
210717	18:56:39.12	44°27.00'	110°20.93'	7.7	0.8	12	94	8	0.18
210717	19:26:57.13	44°27.40'	110°21.96'	2.8	0.0	7	126	10	0.11
210717	19:27:00.99	44°27.41'	110°21.95'	2.9	0.9	7	125	10	0.10
210717	19:31:13.02	44°25.59'	110°20.31'	7.5	1.8W	14	88	6	0.12
210717	19:52:49.30	44°24.86'	110°22.37'	5.0	0.9	9	107	7	0.17
210717	20:10:18.88	44°27.04'	110°20.77'	7.1	1.1	11	96	8	0.21
210717	20:12:08.98	44°26.72'	110°19.25'	6.5	1.4	13	110	7	0.19
210717	20:12:39.87	44°27.26'	110°21.57'	6.0	1.4	10	91	9	0.11
210717	20:13:12.18	44°27.34'	110°21.83'	2.3	--	6	126	9	0.23
210717	20:13:44.93	44°27.63'	110°22.02'	3.6	--	6	123	10	0.12
210717	20:15:16.66	44°27.36'	110°21.09'	8.4	1.7	13	96	9	0.17
210717	20:16:08.56	44°27.36'	110°21.77'	2.8	1.4	7	126	9	0.18
210717	20:28:14.72	44°28.07'	110°21.34'	6.2	1.0	9	92	9	0.19
210717	20:36:38.76	44°28.94'	110°23.35'	2.6	1.0	8	113	9	0.07
210717	22:47:34.30	44°25.85'	110°21.21'	4.4	0.9	11	92	7	0.12
210717	23:24:44.76	44°27.42'	110°21.46'	6.3	0.9	14	93	9	0.19
210717	23:27:44.34	44°25.67'	110°20.08'	7.6	0.6	9	92	6	0.15
210717	23:31:24.05	44°28.34'	110°23.30'	2.2	1.1	10	104	10	0.10
210718	00:00:27.37	44°26.74'	110°21.00'	7.3	2.0W	16	93	8	0.17
210718	00:23:07.68	44°25.12'	110°21.23'	7.1	1.0	9	99	6	0.11
210718	00:32:48.45	44°26.84'	110°21.07'	7.7	--	12	103	8	0.09
210718	00:33:01.09	44°26.21'	110°18.65'	0.6	1.4	6	136	5	0.28
210718	00:36:58.98	44°26.97'	110°21.42'	7.8	1.3	13	91	9	0.15
210718	00:38:17.41	44°27.05'	110°20.86'	6.9	--	10	95	8	0.11
210718	00:38:46.97	44°26.99'	110°21.62'	2.2	1.1	10	91	9	0.11
210718	00:39:00.00	44°26.88'	110°21.99'	4.1	1.5	11	85	9	0.12
210718	00:39:08.98	44°26.41'	110°22.36'	2.3	1.5	7	126	9	0.22
210718	00:39:26.40	44°26.85'	110°21.81'	3.7	1.2	9	88	9	0.08
210718	00:41:49.13	44°25.35'	110°21.66'	5.3	2.2W	13	97	7	0.09
210718	00:41:57.10	44°27.32'	110°21.50'	2.0	2.1	8	109	9	0.26
210718	00:47:51.41	44°26.90'	110°21.82'	3.2	1.5	11	89	9	0.09
210718	00:49:02.94	44°27.13'	110°21.16'	6.9	2.1W	19	94	9	0.19
210718	00:49:38.82	44°26.76'	110°20.56'	9.8	2.3	9	104	8	0.14

**Table 2. Earthquakes in the Yellowstone Region: July 1–September 30, 2021**

DATE	ORIGIN TIME	LATITUDE	LONGITUDE	DEPTH	MAG	NO	GAP	DMN	RMS
210718	00:55:14.57	44°26.78'	110°20.76'	7.8	1.6W	14	95	8	0.15
210718	00:56:24.61	44°27.11'	110°21.72'	3.8	1.2	8	90	9	0.03
210718	00:59:36.39	44°27.48'	110°22.04'	2.5	1.2	10	86	10	0.08
210718	01:00:54.70	44°27.33'	110°22.02'	2.8	1.0	7	112	10	0.09
210718	01:09:27.65	44°27.12'	110°21.78'	4.7	1.1	8	89	9	0.07
210718	01:14:14.75	44°27.29'	110°22.02'	3.6	0.2	8	113	10	0.13
210718	01:14:23.32	44°25.18'	110°22.02'	2.2	0.9	8	146	7	0.13
210718	01:30:32.31	44°28.95'	110°22.75'	2.2	1.0	8	96	9	0.09
210718	02:05:44.23	44°26.67'	110°20.86'	7.8	0.6	12	93	8	0.11
210718	02:41:39.65	44°26.29'	110°20.36'	6.7	1.3W	16	94	7	0.13
210718	04:12:04.86	44°48.74'	110°53.84'	7.6	0.6W	20	121	5	0.14
210718	04:47:32.35	44°26.15'	110°20.40'	8.1	1.1	13	93	7	0.16
210718	06:23:10.16	44°25.13'	110°20.62'	8.1	1.3W	14	79	6	0.12
210718	06:34:43.89	44°24.62'	110°19.44'	3.2	1.1W	12	97	4	0.16
210718	06:34:52.05	44°25.49'	110°20.47'	9.4	1.0	7	110	6	0.10
210718	06:51:55.31	44°28.78'	110°22.05'	7.1	1.6W	16	82	9	0.11
210718	09:00:36.36	44°25.17'	110°20.24'	6.7	2.1W	25	69	5	0.16
210718	10:18:49.46	44°25.50'	110°20.32'	6.5	1.3W	13	88	6	0.17
210718	10:24:44.56	44°25.99'	110°20.83'	3.3	2.1W	10	111	7	0.24
210718	10:25:12.91	44°25.56'	110°20.79'	5.6	2.1	14	118	6	0.19
210718	10:26:22.77	44°26.20'	110°20.54'	6.7	1.3W	20	92	7	0.15
210718	10:30:29.16	44°25.97'	110°21.24'	3.4	0.5	11	92	7	0.11
210718	10:31:03.18	44°26.02'	110°20.38'	7.5	1.7	13	92	6	0.15
210718	10:31:29.45	44°25.51'	110°21.09'	2.1	0.0	10	93	6	0.23
210718	10:31:52.53	44°25.79'	110°21.59'	2.1	-0.3	8	92	7	0.13
210718	10:35:32.00	44°25.93'	110°20.14'	6.6	1.1	14	94	6	0.16
210718	11:07:32.33	44°25.54'	110°20.28'	7.1	1.2W	17	87	6	0.13
210718	12:25:23.37	44°26.29'	110°20.45'	9.0	0.8	10	94	7	0.08
210718	13:21:43.26	44°28.16'	110°21.97'	7.4	1.1	11	85	9	0.10
210718	14:20:03.60	44°27.12'	110°21.08'	6.9	1.1	16	94	9	0.11
210718	14:20:37.13	44°26.91'	110°21.71'	3.0	1.4W	14	89	9	0.14
210718	15:23:56.95	44°27.54'	110°21.68'	3.7	0.5	10	90	9	0.19
210718	15:36:35.70	44°27.89'	110°21.49'	8.1	0.8	11	91	9	0.10
210718	15:39:18.46	44°25.48'	110°19.38'	8.6	1.3W	11	98	5	0.18
210718	15:39:37.99	44°25.70'	110°20.71'	4.6	0.9	9	98	6	0.05
210718	15:46:10.69	44°25.30'	110°19.50'	7.7	0.8	13	94	5	0.18
210718	15:46:29.72	44°25.65'	110°19.47'	7.6	1.1	11	98	5	0.20
210718	15:47:28.28	44°25.52'	110°19.08'	8.8	1.2W	13	102	5	0.16
210718	15:52:35.26	44°25.51'	110°19.68'	8.1	1.1	15	94	5	0.11
210718	15:52:57.56	44°25.80'	110°20.35'	5.4	0.5	7	103	6	0.04
210718	15:58:29.22	44°25.12'	110°19.49'	7.9	1.2	11	91	4	0.15
210718	16:01:21.85	44°25.30'	110°19.73'	8.0	1.3W	13	90	5	0.14
210718	16:01:42.24	44°25.07'	110°19.67'	6.4	1.7	10	106	4	0.12
210718	16:02:13.45	44°25.71'	110°20.86'	5.0	1.4	8	96	6	0.13
210718	16:02:54.98	44°25.47'	110°19.63'	6.8	1.8W	15	94	5	0.16

**Table 2. Earthquakes in the Yellowstone Region: July 1–September 30, 2021**

DATE	ORIGIN TIME	LATITUDE	LONGITUDE	DEPTH	MAG	NO	GAP	DMN	RMS
210718	16:06:52.98	44°25.39'	110°20.02'	7.5	0.6	10	88	5	0.20
210718	16:23:14.11	44°25.57'	110°20.26'	5.8	0.6	10	103	6	0.06
210718	16:25:32.21	44°25.54'	110°19.04'	9.1	0.6	13	103	5	0.15
210718	16:25:32.40	44°25.60'	110°19.77'	7.6	0.7	14	94	5	0.13
210718	16:25:47.02	44°26.26'	110°21.24'	2.5	0.6	6	138	7	0.11
210718	16:25:55.91	44°25.32'	110°15.05'	2.1	-0.1	5	228	4	0.06
210718	16:36:17.15	44°27.74'	110°21.46'	8.0	1.8W	13	92	9	0.15
210718	16:54:56.62	44°27.78'	110°21.56'	7.6	0.9	10	91	9	0.12
210718	17:01:24.89	44°27.44'	110°21.94'	2.9	0.8	6	125	10	0.23
210718	17:02:58.43	44°27.46'	110°22.17'	2.0	0.6	9	85	10	0.16
210718	17:13:15.04	44°25.38'	110°20.14'	8.0	0.7	10	88	5	0.17
210718	18:10:29.31	44°26.51'	110°20.32'	6.4	1.6W	10	97	7	0.25
210718	18:51:21.28	44°28.97'	110°21.93'	11.0	0.6	6	108	8	0.07
210718	18:51:25.25	44°29.05'	110°22.06'	9.6	1.3W	7	107	8	0.12
210718	19:17:28.51	44°25.66'	110°19.56'	8.3	0.8	12	97	5	0.20
210718	19:33:53.71	44°36.59'	110°46.19'	2.3	1.4	7	188	6	0.18
210718	19:34:03.49	44°34.97'	110°45.19'	2.2	0.8	8	132	9	0.17
210718	19:39:51.22	44°38.55'	110°43.51'	7.5	0.5	6	134	8	0.05
210718	19:43:35.84	44°26.33'	110°21.23'	2.4	0.9	7	94	8	0.08
210718	20:46:25.33	44°27.01'	110°20.86'	7.5	0.3	7	124	8	0.13
210718	22:17:00.54	44°27.00'	110°21.23'	7.7	1.2	11	92	8	0.10
210718	22:30:49.21	44°15.59'	110°30.35'	5.1	1.0	13	103	2	0.08
210718	23:25:57.96	44°27.48'	110°20.77'	7.3	1.3	11	99	9	0.18
210719	00:38:46.84	44°47.95'	110°48.08'	6.2	0.2	9	212	4	0.10
210719	01:43:47.13	44°25.73'	110°19.96'	7.8	1.0	14	94	6	0.12
210719	05:23:48.36	44°29.75'	110°23.63'	2.1	1.3	16	64	7	0.14
210719	06:17:11.35	44°27.55'	110°22.20'	3.2	0.1	7	110	10	0.11
210719	06:17:37.37	44°27.65'	110°21.34'	7.9	1.3	16	93	9	0.17
210719	06:25:16.49	44°27.35'	110°21.48'	6.6	1.5	15	92	9	0.20
210719	07:39:49.78	44°27.29'	110°21.99'	2.3	--	10	87	10	0.10
210719	07:39:55.56	44°29.68'	110°21.72'	2.0	1.8	7	97	8	0.30
210719	07:40:00.90	44°27.84'	110°22.23'	2.9*	2.0	7	152	11	0.32
210719	07:40:23.30	44°27.17'	110°21.67'	4.2	1.8W	19	91	9	0.16
210719	07:41:12.93	44°27.49'	110°22.07'	2.2	1.6	10	86	10	0.12
210719	07:41:45.08	44°27.02'	110°22.27'	2.8	1.5	9	84	9	0.21
210719	07:42:01.79	44°27.19'	110°21.74'	2.9	2.7	6	128	9	0.18
210719	07:42:26.88	44°27.39'	110°22.06'	2.7	1.8	8	111	10	0.16
210719	07:42:35.96	44°27.21'	110°22.30'	2.9	1.5	8	115	10	0.21
210719	07:43:45.94	44°27.33'	110°22.12'	2.7	1.9	8	113	10	0.12
210719	07:44:48.13	44°26.87'	110°20.73'	2.2	1.5	8	111	8	0.24
210719	07:47:33.60	44°26.77'	110°21.07'	7.0	0.8	16	92	8	0.18
210719	07:47:38.74	44°26.91'	110°21.84'	2.7	0.2	6	131	9	0.17
210719	07:48:35.59	44°27.52'	110°21.60'	6.4	0.9	12	91	9	0.22
210719	12:00:00.31	44°25.64'	110°20.54'	6.6	1.2W	15	87	6	0.15
210719	13:40:32.05	44°27.40'	110°21.24'	8.5	0.8	11	94	9	0.09

**Table 2. Earthquakes in the Yellowstone Region: July 1–September 30, 2021**

DATE	ORIGIN TIME	LATITUDE	LONGITUDE	DEPTH	MAG	NO	GAP	DMN	RMS
210719	15:17:39.13	44°25.43'	110°20.12'	7.6	1.1	13	88	5	0.10
210719	16:15:06.50	44°44.04'	110°52.82'	4.6	0.3	9	95	6	0.09
210719	16:50:00.51	44°40.28'	110°43.00'	2.1	0.4	10	128	6	0.16
210719	16:50:32.31	44°41.62'	110°43.23'	7.2	0.6	13	97	4	0.12
210719	17:05:19.07	44°27.38'	110°21.03'	8.6	2.1W	19	63	9	0.14
210719	17:27:42.36	44°26.89'	110°22.40'	2.2	0.8	7	135	9	0.18
210719	17:27:55.59	44°27.49'	110°23.73'	3.3*	0.1	6	133	11	0.15
210719	18:53:53.55	44°28.13'	110°21.96'	5.8	1.5W	10	85	9	0.06
210719	21:55:46.17	44°28.37'	110°21.74'	6.2	--	8	86	9	0.18
210719	21:55:47.94	44°28.20'	110°21.45'	6.2	1.4W	9	134	9	0.27
210720	00:15:13.42	44°46.73'	110°49.02'	5.2	1.1W	18	97	3	0.19
210720	00:45:51.56	44°44.14'	111°09.55'	9.8	0.1	9	85	3	0.17
210720	02:09:11.51	44°26.11'	110°20.20'	6.9	0.6	11	95	6	0.15
210720	02:39:23.48	44°26.09'	110°19.95'	8.2	0.9	12	97	6	0.16
210720	02:39:58.13	44°25.97'	110°21.38'	2.1	0.6	7	90	7	0.09
210720	04:53:24.39	44°27.16'	110°21.52'	6.8	1.0	17	90	9	0.17
210720	04:53:50.44	44°27.24'	110°22.10'	2.8	--	8	86	10	0.11
210720	04:53:52.53	44°27.24'	110°22.03'	2.6	0.9	10	86	10	0.13
210720	05:47:20.02	44°44.14'	110°53.02'	5.4	0.3W	13	85	6	0.12
210720	06:13:32.43	44°44.25'	111°09.06'	15.7	-0.3	7	185	7	0.11
210720	06:15:36.54	44°44.12'	111°10.69'	14.7	0.6W	17	84	2	0.17
210720	07:29:55.20	44°30.21'	110°22.95'	0.8	0.7	11	86	6	0.05
210720	10:56:53.62	44°27.19'	110°21.94'	1.8	0.9	15	87	9	0.20
210720	11:04:50.39	44°26.89'	110°21.73'	2.1	1.6W	16	89	9	0.13
210720	11:08:10.03	44°27.15'	110°21.70'	3.4	0.9	9	90	9	0.12
210720	11:30:51.54	44°44.28'	110°53.14'	7.3	0.6W	14	87	6	0.12
210720	12:19:16.77	44°26.93'	110°21.82'	2.5	1.0	10	116	9	0.14
210720	12:19:30.94	44°26.79'	110°21.77'	2.1	1.7W	11	89	9	0.33
210720	12:21:31.41	44°27.17'	110°21.61'	5.0	--	10	91	9	0.06
210720	12:22:21.97	44°26.26'	110°23.03'	0.9	1.7	9	89	9	0.12
210720	12:22:36.09	44°27.50'	110°21.30'	2.8	1.8	8	94	9	0.24
210720	12:23:04.10	44°44.25'	110°52.78'	7.6	0.7	9	84	6	0.09
210720	12:23:06.97	44°27.03'	110°21.19'	4.1	1.5	8	96	8	0.09
210720	12:46:31.02	44°27.50'	110°21.88'	7.7	1.8W	17	88	10	0.10
210720	14:19:40.76	44°57.53'	111°11.29'	3.3*	1.8W	17	151	12	0.20
210721	04:04:32.69	44°44.85'	110°52.94'	7.8	0.6W	12	93	5	0.10
210721	04:04:34.34	44°44.46'	110°53.04'	5.1	1.3W	15	88	6	0.15
210721	04:05:11.60	44°44.32'	110°52.96'	3.8	--	6	116	6	0.04
210721	04:05:12.38	44°44.61'	110°52.96'	6.4	0.6W	15	90	6	0.18
210721	05:07:03.91	44°25.90'	110°17.52'	5.9	1.7W	13	131	4	0.14
210721	06:06:20.50	44°26.28'	110°21.36'	4.0	1.1	12	93	8	0.15
210721	06:55:32.36	44°27.22'	110°20.83'	8.0	0.5	11	97	8	0.17
210721	08:54:47.16	44°25.80'	110°20.32'	6.9	1.1W	16	90	6	0.15
210721	08:57:01.71	44°26.28'	110°20.38'	1.6	1.0	10	105	7	0.13
210721	09:10:09.54	44°38.18'	110°41.08'	4.8	0.5W	14	134	5	0.16

**Table 2. Earthquakes in the Yellowstone Region: July 1–September 30, 2021**

DATE	ORIGIN TIME	LATITUDE	LONGITUDE	DEPTH	MAG	NO	GAP	DMN	RMS
210721	09:20:38.63	44°27.60'	110°21.74'	8.0	1.2W	16	89	9	0.17
210721	09:25:43.20	44°27.50'	110°21.61'	7.7	1.0W	16	91	9	0.19
210721	09:50:22.08	44°26.32'	110°20.40'	7.3	1.1	12	94	7	0.16
210721	11:02:32.93	44°27.34'	110°22.00'	2.8	0.4	8	112	10	0.09
210721	11:03:03.82	44°27.25'	110°22.04'	2.7	0.3	10	113	10	0.15
210721	12:06:11.61	44°45.98'	111°01.65'	8.3	-0.6	9	153	2	0.15
210721	14:02:27.32	44°43.98'	110°52.89'	2.0	0.4	9	94	7	0.10
210721	15:02:02.15	44°44.07'	110°53.06'	2.3	0.4	10	97	7	0.10
210721	18:02:12.83	44°24.95'	110°19.21'	8.7	1.1	13	92	4	0.16
210721	18:29:04.00	44°27.29'	110°21.21'	8.1	1.7W	15	95	9	0.19
210721	20:08:30.82	44°25.13'	110°19.47'	8.4	0.7	11	91	4	0.15
210721	21:27:52.41	44°26.00'	110°20.70'	3.3	1.1	7	139	7	0.08
210722	01:57:42.46	44°24.88'	110°18.63'	9.5	1.7W	17	65	3	0.18
210722	02:11:02.39	44°24.85'	110°20.71'	6.2	1.1	13	88	5	0.18
210722	03:22:32.91	44°25.15'	110°19.83'	7.4	0.9	15	104	5	0.14
210722	04:48:37.03	44°25.35'	110°19.57'	8.1	0.9	13	94	5	0.17
210722	05:42:52.28	44°25.35'	110°19.07'	11.2	1.6W	19	64	4	0.17
210722	05:46:01.77	44°25.32'	110°21.20'	4.1	0.9	12	96	6	0.15
210722	05:56:09.06	44°26.87'	110°21.93'	3.0	1.2W	13	88	9	0.11
210722	06:30:51.67	45°04.16'	110°22.48'	19.7	0.4	9	147	27	0.24
210722	07:44:06.59	44°41.31'	110°42.93'	7.4	0.0	9	86	4	0.07
210722	07:44:13.31	44°42.23'	110°43.94'	4.6	0.3	9	116	4	0.17
210722	10:45:14.69	44°25.05'	110°19.38'	8.7	2.4W	32	56	4	0.21
210722	12:48:34.37	44°24.91'	110°19.97'	7.8	1.8W	21	82	5	0.19
210722	12:49:04.85	44°25.25'	110°20.59'	5.2	1.6	16	94	6	0.15
210722	12:51:23.53	44°25.14'	110°19.95'	7.0	1.2	15	103	5	0.10
210722	14:14:02.57	44°41.15'	110°04.89'	9.6	1.2	8	140	8	0.09
210722	20:32:12.12	44°27.51'	110°22.12'	3.2	0.4	7	109	10	0.09
210722	20:32:30.77	44°27.57'	110°22.14'	3.2	0.3	8	109	10	0.10
210722	20:32:33.79	44°27.48'	110°22.57'	3.2	0.9	7	112	10	0.13
210722	21:37:55.48	44°27.40'	110°22.48'	2.6	1.2W	8	103	10	0.14
210722	22:08:01.69	44°26.42'	110°21.48'	3.6	1.1	6	132	8	0.12
210722	22:14:33.20	44°26.39'	110°21.00'	6.8	1.3	15	89	7	0.16
210722	22:19:54.73	44°27.13'	110°21.30'	7.2	1.4	12	93	9	0.19
210722	22:20:16.03	44°26.40'	110°21.74'	2.3	1.5	7	124	8	0.21
210722	22:20:59.52	44°27.18'	110°19.38'	9.2	1.8W	9	110	7	0.12
210722	22:26:05.78	44°27.30'	110°21.42'	7.7	1.2	9	100	9	0.23
210722	22:32:32.36	44°26.34'	110°20.86'	7.2	1.3	9	120	7	0.15
210722	22:37:52.92	44°27.33'	110°20.92'	8.0	2.0W	22	97	9	0.16
210723	02:06:48.01	44°27.87'	110°21.38'	7.7	1.0	10	92	9	0.08
210723	16:49:13.41	44°44.27'	110°53.42'	5.6	1.1W	21	90	6	0.14
210723	16:54:23.34	44°44.36'	110°53.19'	6.9	0.8W	15	89	6	0.13
210723	17:49:50.78	44°44.02'	110°53.03'	2.6	-0.2	8	144	7	0.07
210723	18:40:14.75	44°43.99'	110°53.14'	2.2	0.6	9	96	7	0.11
210723	18:47:23.76	44°45.08'	110°56.02'	8.2	1.4W	24	97	6	0.16

**Table 2. Earthquakes in the Yellowstone Region: July 1–September 30, 2021**

DATE	ORIGIN TIME	LATITUDE	LONGITUDE	DEPTH	MAG	NO	GAP	DMN	RMS
210724	03:49:29.59	45°01.42'	110°30.35'	13.4	2.3W	24	139	15	0.19
210724	04:15:49.31	44°46.58'	110°52.90'	7.7	0.1	6	131	3	0.07
210724	04:20:38.59	44°44.09'	110°53.20'	7.2	2.1W	27	86	7	0.20
210724	04:43:09.59	44°44.01'	110°53.19'	5.2	1.1W	22	85	7	0.18
210724	04:57:44.13	44°43.89'	110°52.99'	3.4	0.2	9	89	7	0.08
210724	04:57:48.67	44°36.08'	110°19.48'	7.8	0.3	6	92	8	0.16
210724	05:20:56.93	44°27.76'	110°22.08'	4.1	0.3	11	90	10	0.13
210724	10:07:22.68	44°44.18'	110°53.11'	6.1	0.4W	12	86	6	0.11
210724	13:23:15.38	44°44.10'	110°41.41'	3.2	0.9	15	161	1	0.11
210724	16:11:40.16	44°27.37'	110°22.09'	6.0	-0.8	6	127	10	0.07
210724	20:23:48.27	44°44.29'	110°52.94'	2.1	-0.2	10	100	6	0.18
210724	20:23:59.38	44°43.96'	110°52.88'	2.1	0.7	12	94	7	0.12
210725	02:35:02.98	44°27.60'	110°21.89'	3.9	0.9	12	87	10	0.07
210725	04:38:16.13	44°43.95'	110°52.89'	3.2	0.3	10	94	7	0.08
210725	07:14:36.58	44°44.19'	110°53.14'	5.1	0.3W	13	86	6	0.13
210725	07:21:57.39	44°27.81'	110°20.86'	7.6	1.7W	11	99	8	0.19
210725	07:23:47.27	44°27.26'	110°21.41'	5.7	1.1	6	110	9	0.09
210725	07:23:49.42	44°43.94'	110°53.25'	5.7	1.8W	26	85	7	0.18
210725	07:35:29.91	44°44.26'	110°53.18'	5.5	0.1	10	87	6	0.12
210725	07:47:09.68	44°44.18'	110°53.17'	5.8	0.3W	9	86	6	0.11
210725	07:48:37.90	44°43.84'	110°52.82'	2.2	-0.4	6	148	7	0.05
210725	08:05:13.22	44°44.31'	110°53.22'	6.9	0.4W	15	88	6	0.13
210725	08:49:51.34	44°30.54'	110°34.37'	2.8	2.1W	20	55	8	0.10
210725	08:53:39.91	44°30.63'	110°34.39'	4.6	1.9W	15	55	8	0.14
210725	14:11:08.99	44°30.46'	110°10.29'	5.1	1.1	13	178	8	0.08
210725	17:37:05.97	44°44.30'	110°53.10'	5.9	0.8W	16	87	6	0.12
210725	18:15:56.75	44°44.47'	110°52.94'	6.4	0.3	10	87	6	0.10
210725	18:18:53.51	44°44.00'	110°52.78'	3.7	0.6	9	93	7	0.07
210725	19:12:50.22	44°36.74'	110°20.12'	4.9	1.3W	11	120	8	0.09
210725	19:14:10.91	44°36.32'	110°20.00'	3.9	1.5W	14	87	7	0.14
210725	19:41:54.87	44°44.16'	110°53.40'	5.4	1.0W	14	89	7	0.15
210725	19:48:00.23	44°44.14'	110°52.88'	4.2	0.5	7	97	6	0.06
210725	22:31:32.59	44°44.35'	110°52.97'	3.8	0.5	9	102	6	0.14
210726	01:06:47.41	44°44.35'	110°53.08'	6.4	0.9W	17	88	6	0.12
210726	03:43:21.16	44°44.45'	110°52.91'	6.0	0.3W	11	87	6	0.11
210726	06:57:01.17	44°44.09'	110°53.64'	5.4	1.5W	24	90	7	0.15
210726	08:04:49.52	44°44.35'	110°53.18'	5.4	0.1	13	89	6	0.12
210726	13:26:07.18	44°44.29'	110°53.32'	6.1	0.7W	15	89	6	0.14
210726	20:54:20.89	44°47.44'	110°53.18'	8.0	1.5W	23	111	3	0.17
210726	21:10:38.43	44°47.84'	110°51.17'	4.2	0.5	11	115	1	0.18
210726	23:07:42.38	44°44.30'	110°53.37'	4.9	0.5W	10	90	6	0.11
210727	06:34:20.10	44°38.51'	110°28.32'	6.5	1.3W	24	86	8	0.17
210727	15:27:52.59	44°28.95'	110°21.29'	7.5	1.1	15	88	8	0.17
210728	04:27:16.53	44°49.03'	111°28.33'	12.6	0.3	8	189	4	0.06
210728	12:36:11.53	44°43.76'	110°52.35'	2.6	0.4	13	86	7	0.12



**Table 2. Earthquakes in the Yellowstone Region: July 1–September 30, 2021**

DATE	ORIGIN TIME	LATITUDE	LONGITUDE	DEPTH	MAG	NO	GAP	DMN	RMS
210728	12:49:59.84	44°41.73'	110°35.12'	5.8	1.4W	14	134	6	0.16
210729	11:50:39.31	44°27.06'	110°21.14'	7.3	1.2	15	93	8	0.16
210729	11:51:09.89	44°27.72'	110°21.73'	4.5	1.2	9	89	9	0.12
210729	11:55:59.20	44°44.31'	110°41.92'	3.1	1.9W	12	163	3	0.08
210729	12:04:04.53	44°45.88'	110°42.76'	2.1	--	16	80	6	0.26
210729	12:04:05.01	44°45.51'	110°42.75'	-0.4	1.1	10	178	5	0.17
210729	12:10:58.77	44°26.88'	110°20.77'	6.2	0.9	10	95	8	0.18
210729	12:11:35.74	44°26.63'	110°21.21'	7.6	1.2	9	118	8	0.15
210729	14:37:58.84	44°47.49'	110°41.70'	2.3	0.8	7	259	9	0.05
210729	14:38:14.40	44°47.91'	110°41.03'	3.7	0.8	6	271	9	0.02
210729	14:40:13.47	44°46.38'	110°42.79'	2.3	0.0	7	238	7	0.16
210729	14:40:31.33	44°47.26'	110°42.34'	2.1	0.4	8	254	8	0.13
210729	14:44:30.00	44°47.65'	110°42.78'	5.8	1.0	12	199	9	0.16
210729	14:44:48.17	44°45.96'	110°42.82'	2.2	0.4	9	187	6	0.18
210729	14:54:17.79	44°46.10'	110°43.31'	2.1	1.3	6	187	7	0.07
210729	14:54:33.34	44°47.26'	110°42.30'	4.3	1.7W	19	155	8	0.16
210729	14:54:49.27	44°47.66'	110°42.64'	5.4	0.6	9	212	9	0.21
210729	14:55:19.79	44°46.31'	110°43.28'	5.1	0.8	13	187	7	0.21
210729	14:57:46.54	44°47.08'	110°42.31'	2.5	0.1	6	251	8	0.12
210729	14:58:10.55	44°46.70'	110°42.59'	2.0	0.7	9	244	7	0.14
210729	15:31:02.07	44°46.05'	110°42.76'	5.2	1.9W	21	79	6	0.23
210729	15:32:48.10	44°47.13'	110°42.31'	4.2	1.4W	14	195	8	0.16
210729	15:32:58.99	44°46.39'	110°42.74'	2.2	0.8	7	193	7	0.16
210729	18:22:12.27	44°45.38'	111°05.39'	9.1	0.3W	15	95	5	0.16
210729	19:11:55.71	44°41.57'	110°02.30'	11.9	1.4	10	147	10	0.33
210729	21:14:25.13	44°27.36'	110°20.98'	9.0	0.7	12	97	9	0.15
210730	02:14:46.10	44°26.04'	110°19.71'	7.6	0.8	12	99	6	0.17
210730	05:01:43.77	44°36.88'	111°08.30'	7.1	0.3	18	197	3	0.15
210730	07:17:59.92	44°36.80'	111°08.27'	8.1	0.8W	20	174	3	0.19
210730	18:21:04.16	44°29.96'	110°23.92'	2.0	0.9	9	89	7	0.11
210731	08:10:57.84	44°27.36'	110°21.51'	8.3	1.3W	20	92	9	0.16
210731	08:15:33.78	44°27.36'	110°22.32'	2.6	0.1	8	113	10	0.12
210731	09:29:28.40	44°27.35'	110°22.33'	3.2	0.2	8	113	10	0.11
210731	09:29:33.53	44°45.25'	110°55.05'	2.2	-0.6	9	139	7	0.11
210731	19:06:56.94	44°43.95'	110°41.17'	3.4	0.2	9	160	2	0.14
210731	19:07:44.82	44°43.88'	110°40.99'	3.4	0.7	8	162	2	0.14
210801	17:06:41.82	44°44.52'	110°41.34'	2.2	0.5	7	232	3	0.14
210802	07:14:58.72	44°44.69'	110°40.80'	4.1	0.1	8	239	3	0.06
210802	09:49:42.27	44°43.81'	110°41.02'	3.8	0.5	11	161	2	0.12
210802	21:44:09.24	44°47.88'	110°51.33'	3.4	0.5	10	200	1	0.13
210803	00:24:09.80	44°15.23'	110°47.04'	3.2	1.1	9	114	3	0.14
210803	05:58:47.94	44°44.86'	111°10.79'	8.8	-0.2	10	105	1	0.16
210803	08:09:25.95	44°45.56'	111°10.89'	13.9	-0.5	9	128	2	0.17
210803	08:09:38.63	44°44.27'	111°12.68'	17.8	-0.4	8	259	2	0.11
210803	08:29:31.62	44°45.91'	111°10.38'	13.2	0.4	12	126	2	0.16

**Table 2. Earthquakes in the Yellowstone Region: July 1–September 30, 2021**

DATE	ORIGIN TIME	LATITUDE	LONGITUDE	DEPTH	MAG	NO	GAP	DMN	RMS
210803	09:07:18.58	44°45.45'	111°09.81'	10.7	-0.2	13	97	3	0.20
210803	15:38:36.00	44°47.02'	110°48.22'	5.1	0.3	5	208	4	0.04
210804	17:46:31.78	44°24.50'	111°02.38'	3.1*	0.7	11	142	17	0.10
210805	05:47:32.84	44°27.97'	110°22.22'	5.9	0.8	6	157	10	0.07
210805	05:53:55.04	44°35.63'	110°22.65'	4.5*	1.5W	9	105	12	0.08
210805	06:01:38.69	44°36.35'	110°21.44'	2.8*	0.7	8	115	13	0.19
210805	06:54:04.91	44°35.63'	110°22.63'	3.2*	0.7	6	113	12	0.10
210805	08:40:30.15	44°45.87'	111°09.34'	10.1	0.9W	18	103	4	0.20
210805	08:48:44.50	44°45.42'	111°09.72'	6.0	-0.5	10	95	3	0.19
210805	08:49:38.04	44°27.70'	110°21.41'	8.8	0.3	8	105	9	0.10
210805	09:07:31.26	44°35.57'	110°22.73'	1.7*	0.9	7	113	12	0.17
210805	09:58:48.50	44°45.62'	111°09.29'	7.0	-0.1	11	95	3	0.16
210805	18:08:20.91	44°45.41'	111°09.45'	6.8	0.3	13	92	3	0.18
210805	20:18:47.18	44°44.18'	110°58.11'	2.3	-0.5	8	134	4	0.05
210806	01:52:47.08	44°46.15'	111°23.71'	16.1	0.6	8	174	7	0.16
210806	02:08:14.15	44°45.73'	110°46.37'	8.0	1.0W	15	188	7	0.11
210806	05:41:23.80	44°43.66'	110°41.37'	4.3	2.0W	24	67	1	0.13
210806	05:54:19.18	44°43.06'	110°41.28'	4.1	0.4	8	160	1	0.15
210806	05:54:47.40	44°43.17'	110°42.35'	1.9	-0.3	10	90	1	0.11
210806	09:32:59.45	44°26.19'	110°49.92'	1.9	0.4	9	165	2	0.09
210806	09:33:22.44	44°26.56'	110°49.22'	1.8	1.0	11	133	2	0.08
210806	12:28:09.40	44°36.11'	110°19.96'	4.9	0.8	13	112	7	0.16
210806	22:15:30.88	44°35.95'	110°22.33'	2.0	0.6	11	109	5	0.20
210806	23:25:24.17	44°39.80'	110°28.59'	5.6	1.6W	13	95	6	0.16
210807	01:09:09.40	44°42.23'	110°39.21'	1.5	0.8	7	139	2	0.04
210807	02:13:15.23	44°44.69'	110°54.00'	1.0	-0.1	12	115	6	0.15
210809	21:15:20.39	44°14.94'	110°47.03'	3.2	1.5	8	123	3	0.04
210811	06:45:43.22	44°51.58'	111°28.93'	12.2	0.5	13	226	20	0.21
210812	10:27:56.04	44°35.75'	110°27.28'	5.0	1.4W	17	139	6	0.13
210812	10:45:07.70	44°43.96'	110°41.41'	2.8	0.7	12	219	1	0.12
210812	15:06:10.81	44°26.27'	110°19.90'	5.7	1.0	12	112	6	0.14
210813	02:49:17.71	44°28.42'	110°23.55'	2.0	0.4	9	74	10	0.23
210813	06:08:54.30	44°41.27'	110°36.66'	8.0	1.3W	19	126	6	0.19
210814	17:03:09.13	44°28.27'	110°46.40'	4.2	1.7W	15	69	5	0.19
210815	13:30:23.68	44°39.27'	110°44.42'	8.1	0.6W	12	121	8	0.12
210815	13:31:29.12	44°39.25'	110°44.64'	6.6	0.5	9	121	8	0.12
210815	17:48:14.66	44°25.25'	110°19.96'	7.1	0.8	11	104	5	0.07
210815	20:43:05.73	44°38.65'	110°44.38'	5.7	0.1	7	134	9	0.04
210815	20:43:24.66	44°33.34'	110°21.73'	1.9	--	6	155	3	0.07
210815	21:12:16.81	44°39.09'	110°44.65'	3.6	0.3	9	125	9	0.09
210816	09:04:33.69	44°40.79'	110°35.03'	4.3	0.8W	14	113	7	0.12
210816	09:04:49.05	44°40.63'	110°34.69'	4.6	1.2W	14	109	7	0.13
210816	12:55:35.07	44°34.33'	110°40.17'	7.1	1.3W	23	66	4	0.19
210816	13:03:58.86	44°27.34'	110°21.62'	5.8	0.9	7	110	9	0.06
210816	13:17:51.37	44°27.33'	110°21.88'	3.0	0.4	7	111	10	0.06

**Table 2. Earthquakes in the Yellowstone Region: July 1–September 30, 2021**

DATE	ORIGIN TIME	LATITUDE	LONGITUDE	DEPTH	MAG	NO	GAP	DMN	RMS
210817	01:11:08.11	44°46.40'	110°49.47'	3.4	0.6	7	169	3	0.06
210817	15:03:31.29	44°46.82'	110°49.63'	4.5	0.6W	15	169	2	0.14
210817	15:03:57.16	44°46.63'	110°49.68'	3.8	-0.4	10	174	2	0.15
210817	17:54:37.43	44°25.89'	110°21.01'	2.3	0.3	8	142	7	0.11
210817	19:58:42.88	44°50.21'	111°21.10'	10.3	1.6W	20	274	13	0.17
210818	07:55:00.21	44°29.93'	110°23.42'	4.9	1.4W	17	64	7	0.12
210818	09:26:12.22	44°14.49'	110°46.36'	4.5	1.2	15	82	4	0.29
210819	01:36:07.89	44°35.90'	110°20.67'	3.9	1.4W	10	104	6	0.23
210819	01:38:10.59	44°35.17'	110°21.20'	3.0	0.6	9	98	4	0.15
210820	02:34:37.05	44°37.20'	110°20.57'	-0.8	0.6	7	246	8	0.10
210820	17:00:28.40	44°47.43'	110°55.94'	9.4	3.0W	32	74	6	0.20
210820	17:06:16.82	44°47.44'	110°55.89'	6.3	1.0W	21	114	6	0.17
210820	17:06:51.26	44°47.12'	110°55.85'	5.8	0.7	18	111	6	0.16
210820	17:07:00.21	44°46.78'	110°55.55'	4.9	0.2	11	178	6	0.18
210820	17:07:22.82	44°47.33'	110°55.84'	5.5	0.1	14	160	6	0.19
210820	17:23:15.26	44°47.14'	110°56.07'	6.8	1.7W	23	111	6	0.17
210821	03:16:05.02	44°43.61'	110°54.12'	6.9	0.6	11	88	8	0.10
210821	14:29:18.33	44°46.91'	110°52.76'	5.4	-0.5	7	175	2	0.10
210821	15:41:24.23	44°49.50'	110°27.33'	7.0	1.5W	14	107	13	0.16
210821	21:24:42.99	44°40.95'	110°34.82'	3.9	1.8W	17	115	6	0.14
210821	23:03:33.60	44°25.74'	110°21.09'	4.6	0.7	8	92	7	0.05
210822	08:29:05.91	44°25.31'	110°21.10'	6.9	0.6	8	139	6	0.07
210822	15:48:37.58	44°45.76'	110°54.66'	7.9	0.2	6	151	6	0.05
210822	16:32:15.33	44°39.89'	110°38.83'	0.4	-0.1	7	201	6	0.05
210822	16:32:25.10	44°39.75'	110°39.60'	0.0	0.7	7	182	6	0.03
210823	07:46:59.79	44°47.53'	110°54.76'	11.4	0.6W	9	166	5	0.23
210824	00:59:00.49	44°40.69'	110°34.95'	3.9	0.8	9	270	9	0.08
210824	05:00:41.11	44°43.41'	111°14.55'	4.9	0.3	13	207	2	0.11
210824	05:22:43.20	44°19.54'	110°32.44'	4.7	0.6	13	101	7	0.06
210824	11:26:30.77	44°48.95'	111°06.09'	9.7	0.3W	12	156	2	0.11
210825	06:42:58.48	44°23.96'	110°22.44'	2.0	1.0	14	121	7	0.18
210825	18:01:34.75	44°46.86'	110°47.36'	2.0	0.9	21	95	5	0.19
210826	02:07:00.08	44°40.75'	111°00.39'	5.4	0.3	9	101	3	0.17
210826	08:59:50.81	44°45.57'	110°42.88'	14.2	0.8W	13	234	11	0.28
210828	08:06:50.89	44°46.11'	111°10.25'	11.9	-0.1	12	129	3	0.18
210828	09:30:26.72	44°46.68'	110°49.75'	5.0	0.7W	16	159	2	0.12
210828	11:58:43.72	44°47.09'	110°49.50'	5.0	0.0	9	198	2	0.11
210828	17:44:49.53	44°26.10'	110°19.59'	2.2	0.2	8	117	6	0.20
210828	23:34:36.23	44°38.95'	110°26.01'	2.3	1.2W	10	203	9	0.08
210829	07:02:02.63	44°25.92'	110°21.16'	3.2	0.2	8	129	7	0.10
210829	12:12:23.77	44°36.71'	110°53.73'	10.6	0.2	10	177	4	0.10
210829	13:45:56.38	44°32.09'	111°06.44'	13.8	0.5	19	155	8	0.18
210831	03:42:58.43	44°42.67'	110°50.87'	2.0	0.6	8	88	6	0.12
210901	08:39:09.36	44°48.68'	110°51.94'	5.0	0.3	12	204	3	0.10
210902	12:01:42.33	44°53.69'	110°47.22'	13.3	-0.2	8	171	12	0.32

**Table 2. Earthquakes in the Yellowstone Region: July 1–September 30, 2021**

DATE	ORIGIN TIME	LATITUDE	LONGITUDE	DEPTH	MAG	NO	GAP	DMN	RMS
210902	15:45:27.88	44°27.14'	110°58.44'	8.9	0.5	11	120	11	0.22
210902	15:45:49.50	44°45.54'	111°06.78'	7.0	0.1	8	133	7	0.08
210902	21:11:09.78	44°47.60'	111°01.36'	7.6	-0.2	7	155	4	0.04
210902	22:58:32.56	44°50.05'	111°22.49'	7.7	1.5W	14	180	15	0.12
210903	17:17:39.53	44°46.75'	110°47.10'	4.6	0.4	10	205	5	0.11
210904	03:48:35.49	44°09.81'	110°19.61'	11.7	1.1	19	175	20	0.18
210904	05:51:29.60	44°39.26'	110°25.67'	5.3	2.6W	24	122	9	0.16
210904	05:51:35.57	44°39.38'	110°25.34'	5.5	3.0W	22	96	9	0.12
210904	09:22:27.91	44°22.16'	111°00.94'	7.1*	0.6	13	132	17	0.14
210904	12:11:51.03	44°39.90'	110°39.25'	6.4	0.8	15	108	6	0.17
210904	21:23:56.86	44°39.16'	110°25.98'	4.4	1.8W	17	133	9	0.11
210904	23:23:22.29	44°39.70'	110°24.56'	8.2	1.6W	9	228	10	0.07
210905	13:43:51.66	44°41.00'	110°27.30'	2.0	--	6	206	6	0.08
210905	13:43:52.38	44°40.08'	110°28.53'	4.6	0.3	12	163	6	0.18
210905	13:44:02.41	44°41.42'	110°25.54'	2.2	0.8	10	236	7	0.19
210905	19:18:27.04	44°45.54'	111°05.92'	10.6	0.4	14	88	4	0.14
210906	00:33:18.34	44°39.38'	110°39.02'	6.1	1.3W	14	114	6	0.11
210906	00:33:32.13	44°39.06'	110°38.74'	8.7	0.6	7	120	5	0.13
210906	03:48:19.93	44°39.54'	110°38.94'	6.9	1.4W	22	79	6	0.15
210906	09:45:47.63	44°39.80'	110°39.08'	7.2	1.5W	14	111	6	0.14
210908	11:56:20.68	44°46.58'	111°12.08'	14.8	0.3	12	166	3	0.18
210908	16:00:47.98	44°48.67'	110°59.62'	7.1	1.3W	19	137	6	0.14
210908	16:50:14.86	44°15.56'	110°47.62'	15.1	1.5	11	155	21	0.11
210908	17:01:31.90	44°14.20'	110°47.10'	4.7	3.2W	27	110	4	0.21
210908	17:05:52.48	44°14.00'	110°49.77'	5.8	2.1W	14	165	5	0.24
210908	17:06:39.17	44°14.44'	110°50.43'	6.7	1.0	12	167	4	0.23
210908	17:07:23.12	44°14.60'	110°49.42'	4.6	1.6	13	144	3	0.09
210908	17:12:48.99	44°14.29'	110°52.07'	7.6	--	9	177	6	0.23
210908	17:12:57.00	44°14.90'	110°48.88'	7.4	1.6	9	161	3	0.24
210908	17:13:45.95	44°14.88'	110°48.57'	4.2	1.3	10	159	3	0.14
210908	17:17:49.71	44°14.60'	110°48.41'	7.0	1.9W	17	159	3	0.22
210908	17:18:06.45	44°14.58'	110°48.01'	4.7	2.3	12	157	3	0.20
210908	17:39:17.72	44°14.17'	110°48.75'	5.7	1.5	11	160	4	0.21
210908	18:00:11.29	44°14.04'	110°47.06'	10.6	3.0W	19	110	18	0.19
210908	18:19:25.86	44°14.92'	110°47.16'	3.4	1.1	9	109	3	0.07
210908	20:23:44.06	44°14.51'	110°47.90'	4.4	0.9	10	105	3	0.22
210909	06:39:22.62	44°20.92'	110°40.06'	6.2	1.3W	17	65	9	0.17
210911	03:35:54.87	44°48.56'	110°59.41'	6.4	0.5	14	174	6	0.09
210911	06:08:20.56	44°44.34'	110°40.75'	4.1	0.6	17	152	2	0.19
210911	07:09:59.40	44°43.36'	110°40.69'	4.0	0.8	15	107	1	0.13
210911	09:32:16.39	44°44.72'	111°04.70'	9.7	0.5W	18	95	6	0.15
210911	15:51:09.07	44°44.66'	111°05.08'	12.0	2.0W	17	74	6	0.14
210911	17:27:30.68	44°44.72'	111°04.67'	11.2	1.2W	18	81	6	0.12
210912	09:32:31.68	44°48.81'	110°29.80'	4.8*	0.9	13	155	11	0.15
210912	10:21:35.75	44°46.69'	110°57.02'	6.9	0.7	17	117	5	0.13

**Table 2. Earthquakes in the Yellowstone Region: July 1–September 30, 2021**

DATE	ORIGIN TIME	LATITUDE	LONGITUDE	DEPTH	MAG	NO	GAP	DMN	RMS
210913	03:44:57.17	44°46.46'	110°57.13'	7.5	1.1W	18	114	5	0.13
210914	10:54:12.94	44°46.60'	110°56.98'	6.1	0.5	19	145	5	0.16
210915	02:30:08.35	44°35.33'	110°11.50'	2.0	1.0	8	146	7	0.26
210915	03:45:33.71	44°27.51'	110°58.82'	4.9*	0.3	9	121	12	0.09
210915	04:32:46.28	44°49.72'	110°28.59'	12.0	1.7W	17	148	13	0.14
210916	08:20:06.19	44°34.30'	110°44.66'	4.5	0.2	10	144	9	0.15
210916	09:05:15.34	44°34.72'	110°44.71'	7.1	1.7W	26	69	9	0.17
210916	09:10:07.93	44°34.41'	110°44.65'	6.8	0.5W	14	93	9	0.11
210916	11:45:31.17	44°22.40'	110°22.09'	5.6	1.0	13	148	7	0.11
210916	14:43:00.15	44°37.28'	110°43.59'	9.9	0.2	8	100	7	0.11
210916	14:43:24.31	44°37.72'	110°44.01'	6.2	0.1	9	155	8	0.15
210916	17:40:07.89	44°33.88'	110°44.28'	6.2	0.8W	13	91	9	0.07
210916	18:21:12.89	44°37.83'	110°44.47'	4.3	-0.1	8	153	8	0.14
210916	18:21:19.28	44°38.01'	110°44.02'	5.4	0.6	10	148	8	0.18
210916	20:24:05.71	44°38.40'	110°44.31'	4.3	0.8W	15	140	8	0.15
210916	21:22:19.47	44°37.96'	110°44.08'	6.8	1.3W	22	90	8	0.14
210916	22:20:54.08	44°39.74'	110°45.12'	6.8	0.8W	17	112	8	0.12
210916	22:42:48.04	44°37.78'	110°44.08'	4.9	0.8	14	153	8	0.11
210917	01:23:34.50	44°37.08'	110°43.32'	8.4	0.5	15	105	6	0.11
210917	01:29:27.10	44°34.31'	110°44.27'	6.7	0.9W	14	90	8	0.19
210917	01:33:08.02	44°34.51'	110°44.78'	6.9	1.0W	13	94	9	0.11
210917	01:36:03.51	44°34.32'	110°44.55'	5.5	1.2W	18	69	9	0.16
210917	01:36:19.18	44°37.44'	110°44.23'	8.3	0.4	12	98	8	0.16
210917	01:42:10.70	44°37.34'	110°43.55'	11.1	0.6	9	161	7	0.11
210917	02:21:57.68	44°38.09'	110°44.16'	5.5	0.5	9	146	8	0.13
210917	04:48:25.00	44°38.07'	110°43.99'	7.2	-0.2	10	146	8	0.13
210917	05:01:01.81	44°37.11'	110°44.13'	8.0	0.1	9	170	7	0.07
210917	05:01:05.62	44°35.22'	110°43.79'	12.0	0.4	11	218	7	0.09
210917	05:03:21.29	44°37.41'	110°44.03'	7.0	--	10	162	7	0.07
210917	05:03:24.22	44°39.06'	110°44.06'	2.3	1.0	10	125	8	0.08
210917	05:03:58.46	44°37.10'	110°43.87'	8.5	0.0	10	117	7	0.08
210917	05:09:48.59	44°38.17'	110°43.95'	6.7	0.1	13	144	8	0.10
210917	05:10:33.80	44°37.39'	110°43.88'	9.7	0.5W	21	63	7	0.16
210917	05:11:28.85	44°37.78'	110°43.85'	7.7	--	9	92	7	0.09
210917	05:11:29.82	44°38.52'	110°43.66'	5.5	0.3	9	135	8	0.13
210917	05:23:03.22	44°38.14'	110°44.04'	5.9	0.0	12	145	8	0.15
210917	05:23:07.72	44°38.25'	110°43.89'	4.1	0.1	12	142	8	0.15
210917	06:18:37.73	44°37.32'	110°43.35'	10.7	0.1	11	100	7	0.14
210917	06:52:34.81	44°37.61'	110°44.10'	8.8	1.2W	20	95	8	0.17
210917	07:48:15.11	44°38.70'	110°44.26'	2.7	-0.3	9	132	9	0.22
210917	07:48:24.85	44°38.43'	110°43.78'	6.8	0.1	13	137	8	0.13
210917	08:48:29.75	44°37.90'	110°44.02'	7.9	0.0	15	91	8	0.18
210917	08:48:39.41	44°37.83'	110°43.93'	5.8	-0.1	13	152	8	0.16
210917	09:18:37.82	44°38.23'	110°43.59'	8.2	0.2	16	141	8	0.15
210917	10:59:36.65	44°38.56'	110°43.86'	6.0	0.2	11	135	8	0.15

**Table 2. Earthquakes in the Yellowstone Region: July 1–September 30, 2021**

DATE	ORIGIN TIME	LATITUDE	LONGITUDE	DEPTH	MAG	NO	GAP	DMN	RMS
210917	15:45:34.40	44°38.22'	110°44.05'	8.2	0.8	18	87	8	0.17
210917	18:06:48.44	44°37.87'	110°44.11'	5.1	1.3	14	151	8	0.12
210917	18:37:28.98	44°37.34'	110°44.16'	5.3	0.8	9	164	8	0.11
210917	19:38:34.65	44°35.86'	110°20.33'	6.8	0.8	10	85	6	0.07
210917	23:10:10.52	44°36.93'	110°43.33'	10.9	0.5	10	173	6	0.09
210917	23:24:30.11	44°37.34'	110°44.23'	3.1	0.3	7	164	8	0.04
210917	23:24:45.74	44°37.87'	110°44.19'	2.0	0.8	11	91	8	0.14
210918	01:32:31.30	44°36.91'	110°43.75'	8.8	0.4	11	107	7	0.09
210918	01:32:48.85	44°37.22'	110°43.48'	9.9	0.6	12	102	7	0.12
210918	06:45:44.82	44°37.47'	110°44.29'	6.6	0.1	9	162	8	0.07
210918	09:45:11.44	44°37.61'	110°42.94'	11.1	0.4	12	95	6	0.13
210918	11:27:16.13	44°23.69'	110°15.23'	7.7	0.8	20	129	3	0.17
210918	12:21:27.88	44°37.70'	110°43.84'	9.0	0.4	15	94	7	0.13
210918	15:26:08.26	44°39.02'	110°45.09'	6.4	-0.1	9	95	8	0.06
210919	00:51:57.77	44°38.55'	110°44.34'	6.2	1.0W	17	82	9	0.09
210919	00:52:15.37	44°39.87'	110°46.55'	2.3	0.5	9	141	7	0.24
210919	00:56:46.31	44°37.68'	110°43.43'	8.9	0.2	10	94	7	0.06
210919	01:59:12.50	44°35.07'	110°45.92'	7.0	0.8W	16	100	8	0.13
210919	03:21:53.22	44°34.75'	110°51.22'	8.6	0.1	8	132	4	0.06
210919	06:00:16.25	44°38.26'	110°44.18'	7.1	1.6W	22	62	8	0.15
210919	06:03:57.15	44°38.23'	110°43.86'	9.5	1.0W	15	87	8	0.15
210919	06:07:21.58	44°38.44'	110°44.15'	7.6	1.3W	18	83	8	0.17
210919	06:10:33.25	44°37.93'	110°42.79'	8.2	0.7	10	102	6	0.18
210919	06:19:10.97	44°38.04'	110°43.70'	9.4	1.4W	18	53	7	0.12
210919	06:19:48.78	44°38.06'	110°44.18'	7.4	1.7W	28	48	8	0.16
210919	07:20:44.32	44°38.51'	110°44.37'	6.0	0.0	9	224	9	0.09
210919	07:21:32.49	44°38.08'	110°44.11'	5.5	-0.1	10	233	9	0.10
210919	07:48:07.52	44°37.62'	110°43.48'	8.1	0.0	10	185	10	0.07
210919	08:20:11.14	44°36.31'	110°42.90'	10.0	0.1	8	190	6	0.09
210919	09:53:54.69	44°37.59'	110°43.55'	8.7	0.3	10	157	7	0.11
210919	09:56:59.62	44°38.78'	110°44.50'	6.2	0.1	8	217	9	0.08
210919	10:13:50.53	44°38.16'	110°43.92'	8.9	0.6W	10	90	8	0.15
210919	12:54:31.67	44°38.58'	110°44.33'	6.5	0.7W	12	135	9	0.16
210919	15:15:29.09	44°38.37'	110°44.36'	6.6	0.6	15	140	9	0.13
210919	21:32:12.70	44°38.82'	110°43.98'	9.4	0.6	13	130	8	0.12
210919	21:34:22.48	44°38.57'	110°44.00'	8.3	0.2	10	134	8	0.16
210919	22:38:39.63	44°37.95'	110°43.96'	8.4	0.3	11	149	8	0.11
210920	03:07:44.03	44°44.97'	111°05.35'	9.5	-0.1	11	110	7	0.10
210920	08:04:45.39	44°38.46'	110°43.97'	6.6	0.0	9	137	8	0.17
210920	08:15:24.53	44°38.80'	110°43.74'	6.8	0.0	7	130	8	0.14
210920	08:19:36.08	44°45.71'	111°11.98'	12.8	0.2	13	158	1	0.14
210920	08:21:47.25	44°38.17'	110°43.59'	9.4	0.0	7	142	7	0.10
210920	09:09:04.91	44°38.20'	110°43.92'	6.2	0.2	8	143	8	0.10
210920	13:42:06.86	44°47.70'	110°47.47'	2.1	0.0	7	233	5	0.09
210920	22:04:46.19	44°45.01'	110°55.53'	7.4	--	10	134	6	0.06

**Table 2. Earthquakes in the Yellowstone Region: July 1–September 30, 2021**

DATE	ORIGIN TIME	LATITUDE	LONGITUDE	DEPTH	MAG	NO	GAP	DMN	RMS
210920	22:04:47.86	44°45.17'	110°56.08'	7.4	0.6	12	141	6	0.21
210920	23:11:21.78	44°44.97'	110°55.12'	6.1	0.1	9	132	7	0.04
210920	23:18:42.52	44°48.40'	110°59.83'	7.6	2.2W	34	123	5	0.15
210921	00:24:52.84	44°48.60'	110°59.67'	7.2	1.2W	20	136	6	0.16
210921	11:15:17.72	44°38.40'	110°43.93'	7.9	0.3	12	138	8	0.12
210921	11:21:24.59	44°37.93'	110°44.02'	8.3	0.5W	15	58	8	0.16
210921	11:27:26.69	44°39.51'	110°45.89'	2.1	-0.2	8	116	8	0.07
210921	11:27:35.39	44°39.22'	110°45.43'	4.9	--	12	123	8	0.15
210921	11:27:36.12	44°39.36'	110°45.44'	2.4	0.1	10	197	8	0.17
210921	11:27:50.69	44°39.32'	110°45.77'	2.3	-0.3	10	120	8	0.18
210921	11:27:56.20	44°39.63'	110°46.12'	2.0	--	10	113	8	0.16
210921	11:30:34.26	44°37.79'	110°43.41'	10.1	0.4W	15	92	7	0.14
210922	11:39:23.88	44°37.83'	110°44.07'	8.2	0.9W	17	92	8	0.14
210922	12:38:59.90	44°37.73'	110°43.81'	7.2	0.4	10	94	7	0.13
210922	13:59:19.34	44°39.20'	110°44.05'	7.1	0.6	12	94	8	0.16
210922	14:00:40.81	44°38.72'	110°43.59'	10.5	0.8	10	98	8	0.12
210922	14:00:54.78	44°37.73'	110°43.97'	8.7	1.6W	13	93	8	0.11
210922	14:33:11.47	44°38.65'	110°44.29'	7.7	1.5W	21	81	9	0.17
210922	14:35:10.68	44°38.59'	110°43.99'	8.9	1.3W	21	81	8	0.15
210922	14:47:04.45	44°38.87'	110°44.17'	3.4	0.5	12	129	9	0.15
210922	14:49:46.86	44°38.96'	110°44.12'	7.4	1.0W	13	77	8	0.15
210922	15:09:57.22	44°38.78'	110°44.17'	6.4	1.5W	24	80	9	0.19
210922	15:35:14.28	44°39.16'	110°44.03'	7.4	1.4W	17	122	8	0.17
210922	21:49:14.17	44°47.51'	110°55.55'	6.7	1.7W	24	123	6	0.14
210923	00:53:04.67	44°38.34'	110°43.97'	7.1	1.8W	23	50	8	0.17
210923	00:57:18.00	44°38.76'	110°44.43'	5.1	1.0W	15	80	9	0.17
210923	03:29:27.21	44°38.78'	110°44.04'	7.2	0.4	16	79	9	0.15
210923	04:50:47.98	44°37.31'	110°43.91'	8.2	0.4	11	100	7	0.07
210923	06:18:03.46	44°37.82'	110°43.78'	8.3	0.2	9	151	7	0.08
210923	06:39:20.24	44°37.81'	110°43.59'	12.2	0.2	9	92	7	0.09
210923	10:21:15.72	44°37.54'	110°43.96'	7.8	0.6W	16	96	7	0.14
210923	10:24:01.44	44°37.78'	110°44.43'	8.2	0.6	15	92	8	0.16
210923	10:40:30.69	44°45.86'	111°05.56'	10.5	0.2	14	99	4	0.10
210923	10:41:52.73	44°48.24'	111°02.99'	5.8	-0.1	7	159	5	0.05
210923	10:41:56.30	44°45.78'	111°05.73'	11.0	0.3	13	94	4	0.13
210923	10:43:10.25	44°45.91'	111°05.35'	11.9	-0.1	14	103	4	0.14
210923	11:06:12.69	44°38.71'	110°43.86'	8.3	1.4W	27	43	8	0.17
210923	11:14:58.25	44°38.75'	110°44.24'	7.8	1.2W	24	79	9	0.18
210923	11:32:50.73	44°38.50'	110°44.22'	7.7	1.4W	21	83	8	0.18
210923	11:33:08.21	44°37.77'	110°43.96'	5.0	0.3	8	153	8	0.05
210923	11:42:36.00	44°38.81'	110°43.43'	8.3	0.2	11	101	8	0.16
210923	15:01:50.65	44°38.83'	110°44.36'	7.2	0.5	14	130	9	0.12
210923	15:43:22.57	44°37.64'	110°43.76'	8.9	0.7	10	95	7	0.10
210923	15:43:41.51	44°37.67'	110°43.58'	9.2	0.5	8	94	7	0.12
210923	16:41:18.17	44°38.43'	110°44.39'	5.8	0.5	9	86	9	0.14

**Table 2. Earthquakes in the Yellowstone Region: July 1–September 30, 2021**

DATE	ORIGIN TIME	LATITUDE	LONGITUDE	DEPTH	MAG	NO	GAP	DMN	RMS
210923	19:05:12.71	44°40.55'	110°05.09'	5.1	0.8	9	178	9	0.19
210923	21:04:21.28	44°20.96'	110°40.29'	3.5	1.2	14	64	9	0.09
210923	21:12:02.57	44°20.93'	110°40.32'	3.4	1.5W	20	64	9	0.09
210923	21:14:47.40	44°20.90'	110°40.30'	3.9	1.0	14	65	9	0.08
210923	21:14:56.07	44°17.41'	110°42.99'	2.1	0.7	6	125	7	0.10
210924	00:31:01.02	44°38.88'	110°44.29'	7.5	0.4	9	128	9	0.12
210924	00:32:13.03	44°39.15'	110°44.47'	7.8	1.1W	13	124	8	0.14
210924	00:35:16.09	44°39.03'	110°44.20'	6.7	0.3	8	125	9	0.12
210924	02:01:13.93	44°38.63'	110°44.30'	5.7	0.3	10	134	9	0.07
210924	02:06:11.71	44°38.92'	110°44.37'	7.3	1.2W	16	78	9	0.15
210924	02:08:57.88	44°38.39'	110°44.25'	8.3	0.4	6	139	8	0.14
210924	02:09:45.11	44°39.08'	110°44.51'	7.3	1.3W	21	64	8	0.15
210924	03:28:25.32	44°37.73'	110°43.95'	6.9	0.2	9	154	8	0.08
210924	05:27:27.72	44°36.47'	110°44.26'	12.8	0.7	8	187	8	0.10
210924	08:24:16.74	44°48.69'	110°59.74'	6.3	0.0	10	175	6	0.11
210924	17:25:57.88	44°48.41'	110°58.95'	6.6	0.5	13	173	6	0.13
210924	17:39:49.92	44°48.50'	110°59.08'	6.4	0.7	15	174	6	0.13
210924	18:37:52.72	44°48.31'	110°59.50'	7.9	2.0W	26	92	5	0.15
210924	18:38:58.04	44°48.07'	110°58.94'	7.5	1.2W	18	131	5	0.12
210924	23:22:19.38	44°44.31'	111°15.47'	11.1	0.2	14	211	4	0.17
210925	00:55:29.31	44°35.65'	110°22.26'	1.9	0.5	11	71	4	0.09
210926	09:48:22.19	44°46.52'	110°56.05'	8.0	0.8W	18	143	6	0.18
210927	02:48:44.13	44°37.80'	110°42.88'	4.5	1.1W	19	107	6	0.18
210927	02:57:54.53	44°36.42'	110°42.08'	7.7	0.6	10	120	5	0.13
210927	03:07:25.90	44°36.33'	110°41.64'	9.8	0.5	9	85	4	0.09
210927	03:11:52.76	44°36.59'	110°43.12'	6.0	1.7W	25	51	6	0.18
210927	03:14:59.27	44°36.99'	110°43.04'	5.1	1.1W	19	64	6	0.17
210927	03:16:07.05	44°36.27'	110°41.71'	9.1	0.6	11	83	4	0.13
210927	03:16:36.73	44°45.01'	110°46.88'	2.9	-0.7	8	167	7	0.04
210927	03:16:46.03	44°36.82'	110°43.05'	2.8	0.4	9	110	6	0.06
210927	03:17:02.32	44°36.85'	110°43.15'	2.3	1.1	14	171	6	0.15
210927	03:17:44.31	44°36.26'	110°42.40'	7.5	0.4	6	191	5	0.08
210927	03:21:10.70	44°36.98'	110°42.95'	2.2	-0.1	8	171	6	0.10
210927	03:21:16.60	44°36.20'	110°42.49'	7.9	0.4	8	125	5	0.07
210927	03:21:38.55	44°35.95'	110°42.13'	8.8	0.7	9	132	5	0.08
210927	03:21:59.61	44°36.96'	110°42.96'	3.4	-0.1	7	171	6	0.08
210927	03:22:13.96	44°35.70'	110°43.28'	2.1	0.3	8	206	6	0.09
210927	03:26:29.15	44°36.70'	110°42.91'	6.0	1.3W	24	66	6	0.21
210927	04:01:28.42	44°36.41'	110°41.14'	10.5	0.4	14	114	3	0.18
210927	04:01:48.73	44°36.82'	110°42.88'	5.4	1.1W	18	65	6	0.18
210927	04:09:44.02	44°35.80'	110°42.47'	8.1	1.1W	15	134	5	0.12
210927	04:11:26.59	44°35.89'	110°42.34'	7.0	1.3W	12	114	5	0.06
210927	04:12:56.50	44°36.26'	110°43.13'	4.9	1.6W	22	52	6	0.17
210927	04:13:24.93	44°35.65'	110°43.31'	3.1	1.6W	11	112	6	0.13
210927	04:17:28.76	44°36.59'	110°42.55'	7.7	1.7W	22	60	5	0.17



**Table 2. Earthquakes in the Yellowstone Region: July 1–September 30, 2021**

DATE	ORIGIN TIME	LATITUDE	LONGITUDE	DEPTH	MAG	NO	GAP	DMN	RMS
210927	04:32:47.19	44°36.03'	110°42.21'	8.3	0.5	8	130	5	0.06
210927	05:33:09.32	44°47.19'	111°05.92'	13.0	0.6W	14	118	1	0.12
210927	06:02:11.26	44°48.87'	110°59.30'	6.0	0.2	10	179	6	0.10
210927	06:17:21.28	44°41.29'	110°05.05'	6.4	0.8	7	170	8	0.23
210927	06:38:19.59	44°46.96'	110°48.50'	5.5	0.2	10	205	3	0.10
210927	09:54:11.41	44°43.34'	110°40.71'	4.4	0.6	17	142	1	0.12
210927	10:19:17.42	44°43.27'	110°40.76'	4.2	1.7W	18	142	1	0.12
210927	22:39:13.61	44°23.48'	110°36.53'	2.0	1.1	12	100	3	0.16
210928	02:08:25.49	44°48.75'	111°00.00'	5.4	0.5	13	262	6	0.11
210928	11:46:47.02	44°38.28'	110°43.97'	7.7	1.0W	14	86	8	0.10
210928	11:49:44.86	44°38.10'	110°43.50'	8.9	0.4	12	88	7	0.10
210928	12:04:10.56	44°38.22'	110°44.38'	7.8	1.5W	22	55	8	0.15
210928	12:09:31.35	44°38.74'	110°44.05'	6.7	0.1	10	131	9	0.08
210928	13:01:23.55	44°45.30'	110°56.74'	11.7	0.1	11	123	5	0.08
210928	19:10:32.25	44°45.64'	111°01.75'	7.8	0.3	11	134	2	0.12
210928	19:10:42.62	44°46.32'	111°01.39'	8.6	1.1W	23	113	2	0.14
210928	19:58:22.22	44°46.03'	111°01.46'	8.0	0.4	13	133	2	0.13
210928	20:55:54.49	44°46.36'	111°01.56'	9.2	0.4	14	136	2	0.07
210928	20:56:00.15	44°45.33'	111°01.97'	8.2	0.6	13	123	2	0.10
210928	22:26:53.93	44°47.13'	111°05.41'	9.4	0.8	16	133	7	0.14
210928	22:39:25.30	44°46.06'	111°01.53'	9.2	0.1	12	133	2	0.13
210929	01:38:08.42	44°46.29'	111°01.67'	9.0	-0.3	10	136	2	0.07
210929	01:40:00.08	44°40.30'	110°26.81'	2.5	0.6	8	124	7	0.12
210929	03:03:52.56	44°46.77'	111°01.42'	9.1	0.4	17	142	3	0.13
210929	04:58:28.98	44°46.59'	111°08.85'	8.4	1.4W	19	108	4	0.17
210929	08:15:56.99	44°46.73'	111°01.61'	9.9	0.7	16	157	3	0.11
210929	08:29:31.39	44°46.54'	111°01.66'	8.9	0.2	15	139	2	0.14
210929	09:27:37.68	44°46.76'	110°57.16'	6.7	0.1	11	148	5	0.09
210929	11:52:52.59	44°26.61'	110°24.87'	7.3	1.6W	24	86	12	0.12
210929	11:54:16.70	44°26.71'	110°25.17'	2.5*	0.8	15	86	12	0.10
210929	12:28:02.21	44°26.80'	110°24.73'	7.7	1.6W	19	85	12	0.14
210929	13:48:47.50	44°46.35'	111°01.46'	9.2	0.5	14	243	2	0.10
210929	16:20:53.21	44°26.68'	110°25.11'	3.2*	0.5	11	121	12	0.05
210929	16:28:15.24	44°26.69'	110°25.03'	3.2*	0.7	11	120	12	0.06
210929	17:05:19.72	44°26.77'	110°25.20'	2.1*	0.4	10	119	12	0.05
210929	19:40:54.25	44°26.83'	110°25.11'	2.6*	-0.2	11	118	12	0.12
210929	20:48:40.40	44°26.68'	110°25.17'	2.8*	-0.2	9	121	12	0.09
210929	20:55:42.11	44°26.71'	110°24.98'	2.9*	0.3	10	120	12	0.10
210929	21:21:25.90	44°26.75'	110°25.27'	2.9*	0.4	12	120	12	0.12
210929	21:42:53.81	44°26.62'	110°25.12'	2.9*	0.6	12	122	12	0.13
210929	21:47:01.81	44°46.14'	111°01.37'	6.7	-0.2	14	134	2	0.18
210929	21:47:06.31	44°46.35'	111°01.32'	8.1	0.7W	17	137	2	0.17
210930	01:42:05.36	44°46.69'	111°01.55'	10.5	1.5W	16	141	3	0.11
210930	05:59:53.34	44°26.61'	110°24.82'	4.7*	0.8	18	86	12	0.07
210930	06:05:59.78	44°26.68'	110°24.67'	7.8	1.9W	24	61	12	0.13

**Table 2. Earthquakes in the Yellowstone Region: July 1–September 30, 2021**

DATE	ORIGIN TIME	LATITUDE	LONGITUDE	DEPTH	MAG	NO	GAP	DMN	RMS
210930	09:57:35.82	44°46.59'	111°01.36'	8.8	0.4	18	140	2	0.16
210930	11:45:00.06	44°26.49'	110°24.90'	7.2	0.7	16	71	12	0.11
210930	12:03:04.38	44°34.58'	110°42.75'	9.5	0.5	16	88	6	0.17
210930	12:22:34.26	44°26.63'	110°24.90'	7.9	0.9	19	86	12	0.14
210930	19:03:09.26	44°49.93'	111°26.97'	11.0	--	9	281	21	0.09
210930	19:46:30.18	44°46.55'	111°01.12'	9.0	0.8W	22	140	2	0.18
210930	19:48:31.12	44°46.66'	111°01.64'	8.2	0.8W	16	141	3	0.14
210930	23:11:22.15	44°37.73'	110°44.55'	7.0	1.2W	14	93	8	0.18
210930	23:43:02.26	44°37.23'	110°44.27'	8.3	1.3W	17	101	8	0.16
210930	23:43:46.95	44°26.54'	110°24.92'	2.0*	-0.4	9	123	12	0.11
210930	23:44:04.62	44°37.73'	110°44.28'	7.0	0.6	16	93	8	0.22

number of earthquakes = 1,496

\* indicates poor depth control

W indicates Wood-Anderson data used for magnitude calculation

**Table 3**  
**UNIVERSITY OF UTAH YELLOWSTONE SEISMIC NETWORK**  
**Operating Seismograph Stations**  
**September 30, 2021**

SEED Station	Location	SEED Channel	No. of Channels	Network Code	Latitude	Longitude	Elevation (meters)	Sensor	Digitizer	Telemetry	Sponsor
B206*	Canyon206bwy2008, Yellowstone, WY	EH[ZEN]	3	PB	44° 46.66'	110° 30.70'	2400	IESE-S2	Q330	Digital	PBO
B207*	Madisn207bwy2007, Yellowstone, WY	EH[ZEN]	3	PB	44° 37.14'	110° 50.91'	2182	IESE-S2	Q330	Digital	PBO
B208*	Lakejn208bwy2008, Yellowstone, WY	EH[ZEN]	3	PB	44° 33.61'	110° 24.09'	2406	IESE-S2	Q330	Digital	PBO
B944*	Grantt944bwy2008, Yellowstone, WY	EH[ZEN]	3	PB	44° 23.38'	110° 32.63'	2365	IESE-S2	Q330	Digital	PBO
B945*	Panthr944swy2008, Yellowstone, WY	EH[ZEN]	3	PB	44° 53.64'	110° 44.65'	2249	IESE-S2	Q330	Digital	PBO
B950*	Norris950bwy2013, Yellowstone, WY	EH[ZEN]	3	PB	44° 42.77'	110° 40.71'	2328	IESE-S2	Q330	Digital	PBO
FLWY*	Flagg Ranch, WY	BH[ZEN]	3	IW	44° 04.96'	110° 41.96'	2078	3ESP	RT-130	Digital	ANSS
IMW*	Indian Meadows, WY	BH[ZEN]	3	IW	43° 53.58'	110° 56.58'	2670	3ESP	RT-130	Digital	ANSS
LKWY*	Lake, WY	BH[ZEN]	3	US	44° 33.91'	110° 24.00'	2424	STS-2	Q330	Digital	USGS
LOHW*	National Elk Refuge, WY	BH[ZEN]	3	IW	43° 36.76'	110° 36.30'	2245	3ESP	RT-130	Digital	ANSS
MCID	Moose Creek, ID	EHZ	1	WY	44° 11.45'	111° 11.03'	2137	L4C	PSN	Analog	USGS
MOOW*	Moose Ponds, WY	BH[ZEN]	3	IW	43° 44.92'	110° 44.69'	2128	3ESP	RT-130	Digital	ANSS
QLMT*	Earthquake Lake, MT	EHZ	1	MB	44° 49.84'	111° 25.80'	2064	L4C	-	Analog	MBMT
REDW*	Red-Top Meadows, WY	BH[ZEN]	3	IW	43° 21.74'	110° 51.18'	2322	3ESP	RT-130	Digital	ANSS
SNOW*	Snow King Mountain, WY	BH[ZEN]	3	IW	43° 27.75'	110° 45.31'	2390	3ESP	RT-130	Digital	ANSS
TPAW*	Teton Pass, WY	BH[ZEN]	3	IW	43° 29.41'	110° 57.04'	2512	3ESP	RT-130	Digital	ANSS
TPMT*	Teepee Creek, MT	EHZ	1	MB	44° 43.79'	111° 39.94'	2518	L4C	-	Analog	MBMT
YDC	Denny Creek, MT	EHZ	1	WY	44° 42.51'	111° 14.60'	2025	L4C	PSN	Analog	USGS
YDD	Grant Junction, Yellowstone, WY	HH[ZEN]	3	WY	44° 24.00'	110° 34.80'	2400	STS-2	Q330	Digital	NSF
		EN[ZEN]	3					Episensor			
YEE	East Entrance (YNP), WY	HH[ZEN]	3	WY	44° 29.12'	109° 53.81'	2270	Compact PH	Centaur	Digital	USGS
YFT	Old Faithful (YNP), WY	HH[ZEN]	3	WY	44° 27.05'	110° 50.24'	2292	Compact PH	Centaur	Digital	USGS
		EN[ZEN]	3					Titan			
YGC	Grayling Creek, MT	EHZ	1	WY	44° 47.77'	111° 06.45'	2075	L4C	PSN	Analog	USGS
YHB	Horse Butte, MT	EHZ	1	WY	44° 45.07'	111° 11.71'	2157	L4C	PSN	Analog	USGS
		HH[ZEN]	3					Compact			
		EN[ZEN]	3					Titan	Centaur	Digital	
YHH	Holmes Hill (YNP), WY	EHZ	1	WY	44° 47.30'	110° 51.03'	2717	S13	PSN	Analog	USGS
		HH[ZEN]	3					Trillium 120			
		EN[ZEN]	3					Titan			

SEED Station	Location	SEED Channel	No. of Channels	Network Code	Latitude	Longitude	Elevation (meters)	Sensor	Digitizer	Telemetry	Sponsor
YHL	Hebgen Lake, MT	HH[ZEN]	3	WY	44° 51.05'	111° 10.98'	2691	Trillium 120	Q330	Digital	USGS
		EN[ZEN]	3					Titan			
YHR	Hawk's Rest, WY	HH[ZEN]	3	WY	44° 06.36'	110° 04.90'	2976	Trillium 120	Q330	Digital	USGS
YJC	Joseph's Coat (YNP), WY	EH[ZEN]	3	WY	44° 45.33'	110° 20.95'	2684	S13	PSN	Analog	USGS
YLA	Lake Butte (YNP), WY	EHZ	1	WY	44° 30.76'	110° 16.12'	2580	L4C	PSN	Analog	USGS
YLT	Little Thumb Creek (YNP), WY	EHZ	1	WY	44° 26.25'	110° 35.28'	2439	L4C	PSN	Analog	USGS
YMC	Maple Creek (YNP), WY	EH[ZEN]	3	WY	44° 45.53'	111° 00.41'	2073	S13	PSN	Analog	USGS
YML	Mary Lake (YNP), WY	EH[ZEN]	3	WY	44° 36.20'	110° 38.63'	2653	S13	PSN	Analog	USGS
YMP	Mirror Plateau (YNP), WY	EHZ	1	WY	44° 44.38'	110° 09.40'	2774	S13	PSN	Analog	USGS
		HH[ZEN]	3					Trillium 120			
		EN[ZEN]	3					Titan			
YMR	Madison River (YNP), WY	HH[ZEN]	3	WY	44° 40.12'	110° 57.90'	2149	Trillium 120	Q330	Digital	USGS
		EN[ZEN]	3					Titan			
YMS	Mount Sheridan (YNP), WY	EHZ	1	WY	44° 15.84'	110° 31.67'	3106	L4C	PSN	Analog	USGS
YMV	Mammoth Vault (YNP), WY	EHZ	1	WY	44° 58.42'	110° 41.33'	1829	L4C	PSN	Analog	USGS
YNE	Northeast Entrance (YNP), WY	HH[ZEN]	3	WY	45° 00.46'	110° 00.48'	2343	Compact	Centaur	Digital	USGS
YNM	Norris Museum (YNP), WY	HH[ZEN]	3	WY	44° 43.59'	110° 42.22'	2311	Trillium 240	Q330	Digital	USGS
YNR	Norris Junction (YNP), WY	HH[ZEN]	3	WY	44° 42.93'	110° 40.75'	2336	Trillium 120	Q330	Digital	USGS
		EN[ZEN]	3					Titan			
YPC	Pelican Cone (YNP), WY	EHZ	1	WY	44° 38.88'	110° 11.55'	2932	L4C	PSN	Analog	USGS
YPK	Parker Peak (YNP), WY	EH[ZEN]	3	WY	44° 43.91'	109° 55.32'	2897	L4C	PSN	Analog	USGS
YPM	Purple Mountain (YNP), WY	EHZ	1	WY	44° 39.43'	110° 52.12'	2582	L4C	PSN	Analog	USGS
YPP	Pitchstone Plateau (YNP), WY	EHZ	1	WY	44° 16.26'	110° 48.27'	2707	S13	PSN	Analog	USGS
		HH[ZEN]	3					Trillium 120			
		EN[ZEN]	3					Titan			
YSB	Soda Butte (YNP), WY	EHZ	1	WY	44° 53.04'	110° 09.06'	2072	L4C	PSN	Analog	USGS
YTP	The Promontory (YNP), WY	EHZ	1	WY	44° 23.51'	110° 17.10'	2384	L4	PSN	Analog	USGS
		HH[ZEN]	3					Trillium 120			
		EN[ZEN]	3					Titan			
YUF	Upper Falls (YNP), WY	HH[ZEN]	3	WY	44° 42.76'	110° 30.71'	2394	Trillium 120	Centaur	Digital	USGS
		EN[ZEN]	3					Titan			
YWB	West Boundary (YNP), WY	EHZ	1	WY	44° 36.35'	111° 06.05'	2310	L4C	PSN	Analog	USGS

\* Station operated by another agency and recorded as part of the Yellowstone Seismic Network  
Network Statistics: 150 data channels from 46 stations were being recorded at the end of this report period

## EXPLANATION OF TABLE

**UURSN Code:** Station code formerly used in routine processing. Owing to software limitations, the station code may not be the same code used by the original operator. For multi-component stations, the vertical, east-west, and north-south high gain (low gain) components are identified by an appended Z(V), E(L), and N(M), respectively, in UUSS phase files.

**Location:** General description of station location. YNP = Yellowstone National Park.

**SEED Station:** The SEED (Standard for the Exchange of Earthquake Data) station code used by the original operator.

**SEED Channel:** The SEED format uses three letters to name seismic channels. See <<[http://www.iris.edu/manuals/SEEDManual\\_V2.4.pdf](http://www.iris.edu/manuals/SEEDManual_V2.4.pdf)>> for information about the SEED channel naming convention. Relevant sections are reproduced below. In the SEED convention, each letter describes one aspect of the instrumentation and its digitization. The first letter specifies the general sampling rate and the response band of the instrument. Band codes used in this table include:

Band Code	Band Type	Sample Rate	Corner Period
E	Extremely short period	≥ 80 Hertz	< 10 seconds
H	High broadband	≥ 80 Hertz	≥ 10 seconds
B	Broadband	≥ 10 to < 80 Hertz	≥ 10 seconds
S	Short period	≥ 10 to < 80 Hertz	< 10 seconds

The second letter specifies the family to which the sensor belongs. Sensor families used in this table are:

Instrument Code	Description
H	High gain seismometer
L	Low gain seismometer
N	Accelerometer

The third letter specifies the physical configuration of the members of a multiple axis instrument package. Channel orientations used in this table are:

Z E N      Traditional (Vertical, East-West, North-South)

**Number of Channels:** Total number of waveform channels recorded.

**Network Code:** The FDSN (Federation of Digital Seismographic Networks) registered network code. See <<[http://www.iris.edu/dms/nodes/dmc/services/network\\_codes](http://www.iris.edu/dms/nodes/dmc/services/network_codes)>> for information about registered seismograph network codes. Network codes referenced in this table:

Network Code	Network name; Network operator or responsible organization
IE	Idaho National Laboratory Seismic Network
IU	IRIS/USGS Network; USGS Albuquerque Seismological Laboratory
IW	Intermountain West Network, U.S. Geological Survey

MB	Montana Regional Seismic Network; Montana Bureau of Mines and Geology
PB	Plate Boundary Observatory
UU	University of Utah Regional Network; University of Utah
US	US National Network; USGS National Earthquake Information Center
WY	Yellowstone Wyoming Seismic Network; University of Utah

**Latitude, Longitude:** Sensor location in degrees and decimal minutes; North latitude, West longitude.

**Elevation:** Sensor altitude in meters above sea level.

<b>Sensor</b>	<b>Description</b>
L4, L4C	Mark Products L4 or L4C short-period seismometer
S13, 18300	Geotech S13 or 18300 short-period seismometer
Ranger	Kinematics Ranger short-period seismometer
40T	Guralp CMG-40T broadband seismometer
3T	Guralp CMG-3T broadband seismometer
3ESP	Guralp CMG-3ESP broadband seismometer
STS-2	Streckheisen STS-2 broadband seismometer
FBA23	Kinematics FBA-23 accelerometer
EpiSensor	Kinematics EpiSensor accelerometer
Applied Mems	Applied Mems accelerometer
PA-23	Geotech PA-23 accelerometer
Compact	Nanometrics Compact broadband seismometer
Compact PH	Nanometrics Compact Posthole broadband seismometer
Trillium 120	Nanometrics Trillium 120 broadband seismometer
Trillium 240	Nanometrics Trillium 240 broadband seismometer
Titan	Nanometrics Titan accelerometer
Observer	Refraction Technology (REF TEK) Model 151 Observer broadband seismometer
IESE-S2	Institute of Earth Science and Engineering S-2 model borehole seismometer

<b>Digitizer</b>	<b>Description</b>
K2	Kinematics Altus Series K2 (19-bit resolution field digitizer)
Etna	Kinematics Altus Series Etna (18-bit resolution field digitizer)
72A-07	Refraction Technology (REF TEK) model 72A-07 (24-bit field digitizer)
72A-08	Refraction Technology (REF TEK) model 72A-08 (24-bit field digitizer)
ANSS-130	Refraction Technology (REF TEK) model 130-ANSS/02 (24-bit resolution field digitizer)
RT-130	Refraction Technology (REF TEK) model RT-130 (24-bit resolution field digitizer)
Q330	Quanterra, Inc Q330 digitizer (24-bit resolution field digitizer)
SMART-24	Geotech SMART-24 digitizer (24-bit resolution field digitizer)
PSN	PSN-ADC-SERIAL version III (16-bit resolution field digitizer)
Basalt	Kinematics Basalt (24-bit resolution field digitizer)
Taurus	Nanometrics Taurus (24-bit resolution field digitizer)
Centaur	Nanometrics Centaur (24-bit resolution field digitizer)

<b>Telemetry</b>	<b>Description</b>
Analog	Data transmission is analog along part of the transmission pathway
Digital	Data are converted to digital form at the station site
None	On-site recording system

**Sponsor (or Operator for stations marked by \* in preceding columns)**

USGS	U.S. Geological Survey
Utah	State of Utah
ANSS	Advanced National Seismic System
INL	Idaho National Laboratory
MBMT	Montana Bureau of Mines and Geology
PBO	Plate Boundary Observatory
NSF	National Science Foundation

**Network Changes During July 1–September 30, 2021**

Sept. 10, 2021:	YUF rebuilt with Trillium 120 sensor and Nanometrics Centaur datalogger
Sept. 11, 2021:	Trillium Compact Posthole sensor replaced Trillium Compact sensor at YEE