

EARTHQUAKE ACTIVITY IN THE YELLOWSTONE REGION

Preliminary Epicenters

January 1 – March 31, 2018

Prepared by the University of Utah Seismograph Stations and funded by
the U.S. Geological Survey (Cooperative Agreement No. G16AC00029)

June 29, 2018

Foreword and Data Explanation

This report contains an epicenter map (Figure 1) and listings of earthquakes (Tables 1 and 2) detected and located in the Yellowstone region (lat. 44° 00' – 45° 10' N, long. 109° 45' – 111° 30' W). The computer program HYPOINVERSE-2000 (F. W. Klein, 2012, U.S. Geological Survey Open-File Report 02-171 revised) was used to process the earthquake data. This report also includes maps and a table of operating seismograph stations in the University of Utah's Yellowstone seismic network (Figure 2, Table 3).

The earthquake listing in Table 2 is estimated to be systematically complete above magnitude 1.5 within Yellowstone. *These data are preliminary—both the locations and magnitudes in this table are subject to revision.*

The following data are listed for each earthquake in Table 2:

- Date (yymmdd) and origin time in Coordinated Universal Time (UTC). To convert to local time, subtract seven hours for Mountain Standard Time (MST) and six hours for Mountain Daylight Time (MDT). During the report period, local time was MST through 02:00 (2:00 a.m.) on March 11 and MDT thereafter.
- Earthquake location coordinates in degrees and minutes of north latitude and west longitude, and depth in kilometers below sea level. Note that prior to October 1, 2012, the earthquake depths in these quarterly reports were computed relative to a datum of 2000 m above sea level.
- "*" indicates poor depth resolution: no recording stations within 10 km or twice the depth.
- MAG, the computed Richter local magnitude (M_L) for each earthquake. "W" indicates that peak amplitude measurements from Wood-Anderson records were used. Otherwise, the estimate is calculated from signal durations and is more correctly identified as coda magnitude (M_C). The notation "--" indicates that a reliable magnitude estimate could not be made.
- NO, the number of P and S readings used in the solution.
- GAP, the largest azimuthal separation in degrees between recording stations used in the solution.
- DMN, the epicentral distance in kilometers to the closest station.
- RMS, the weighted root-mean-square of the travel-time residuals in seconds:

$$RMS = \left(\frac{\sum_i (W_i R_i)^2}{\sum_i (W_i)^2} \right)^{\frac{1}{2}}$$

where: R_i is the observed minus the computed arrival time for the i -th P or S reading, and W_i is the relative weight given to the i -th P or S arrival time (0.0 for no weight through 1.0 for full weight).

EARTHQUAKE ACTIVITY IN THE YELLOWSTONE REGION

January 1 – March 31, 2018

by J. Farrell, R. Burlacu, P. M. Roberson, J. M. Hale, A. Parapuzha, and N. Forbes
with contributions by
K. D. Koper, R. B. Smith, J. C. Pechmann, and K. L. Pankow

University of Utah Seismograph Stations
115 South 1460 East, Room 107 FASB
Salt Lake City, UT 84112-0102
Tele: (801) 581-6274 FAX: (801) 585-5585
email: jamie.farrell@utah.edu
URL: <http://www.seis.utah.edu> (aka quake.utah.edu)

During the three-month period January 1 through March 31, 2018, the University of Utah Seismograph Stations (UUSS) located 983 earthquakes within the Yellowstone region (Figure 1). The total includes 3 earthquakes in the magnitude 3 range and 8 earthquakes in the magnitude 2 range. The largest event to occur during this period was a magnitude 3.1 earthquake on February 18th. There was one earthquake reported felt in the region during the report period (see Table 1, a cumulative tabulation of earthquakes that were felt in the Yellowstone region during 2018). Additional information on earthquakes within the Yellowstone region is available from the University of Utah Seismograph Stations.

Online Information

A complete copy of this report, including maps and the earthquake catalog, is available on the UUSS web site at <http://quake.utah.edu/earthquake-center/quarterly-seismicity-reports>.

Note: On October 1, 2012, UUSS began using the ANSS Quake Monitoring System (AQMS) software package for data acquisition and data processing. The primary effect on the data reported herein comes from computing the earthquake locations with a newer version of the computer program HYPOINVERSE-2000 (F. W. Klein, 2012, U.S. Geological Survey Open-File Report 02-171 revised) and a revised and expanded set of velocity models. As implemented at UUSS, this new version of the location program accounts for station elevation differences more accurately and reports focal depths relative to sea level instead of the 2000 m elevation datum used previously.

For earthquakes of magnitude 3 and larger in the Yellowstone region, the U. S. Geological Survey automatically posts a Community Internet Intensity Map (CIIM) on its "Did You Feel It?" web page at <http://earthquake.usgs.gov/earthquakes/dyfi/>. We encourage anyone who feels an earthquake to report their observations on this interactive web site; felt information is available by zip code on the CIIM site or can be obtained from UUSS directly.

Earthquakes of Magnitude 3.0 or Larger

M _L 3.1	February 17	22:37 MST	8.0 mi NE of West Yellowstone, MT
M _L 3.1	February 18	08:29 MST	7.6 mi NE of West Yellowstone, MT
M _L 3.0	February 25	08:10 MST	8.2 mi NE of West Yellowstone, MT

Notable Swarm Seismicity

During the report period, there were five earthquake swarms in the Yellowstone region. For reporting purposes, we use the Mogi definition [Mogi, 1963] of a swarm and require each swarm to have ten or more earthquakes. Note that typically, around 50% of Yellowstone earthquakes occur as part of a seismic swarm [Farrell et al., 2009].

- A. A swarm of 12 earthquakes ($-0.4 \leq M \leq 1.2$) occurred about 9 mi NE of West Yellowstone, MT from January 3rd – 5th.
- B. A swarm of 23 earthquakes ($-0.5 \leq M \leq 0.8$) occurred about 17 mi E of West Yellowstone, MT from January 12th – 13th.
- C. A swarm of 738 earthquakes ($-0.4 \leq M \leq 3.1$) occurred about 8 mi NE of West Yellowstone, MT from February 8th – 26th.
- D. A swarm of 27 earthquakes ($0.2 \leq M \leq 1.8$) occurred about 10 mi NNE of Old Faithful, YNP on March 11th.
- E. A swarm of 20 earthquakes ($0.2 \leq M \leq 2.2$) occurred about 8 mi NE of West Yellowstone, MT from March 13th – 18th.

These swarms are labeled in Figure 1.

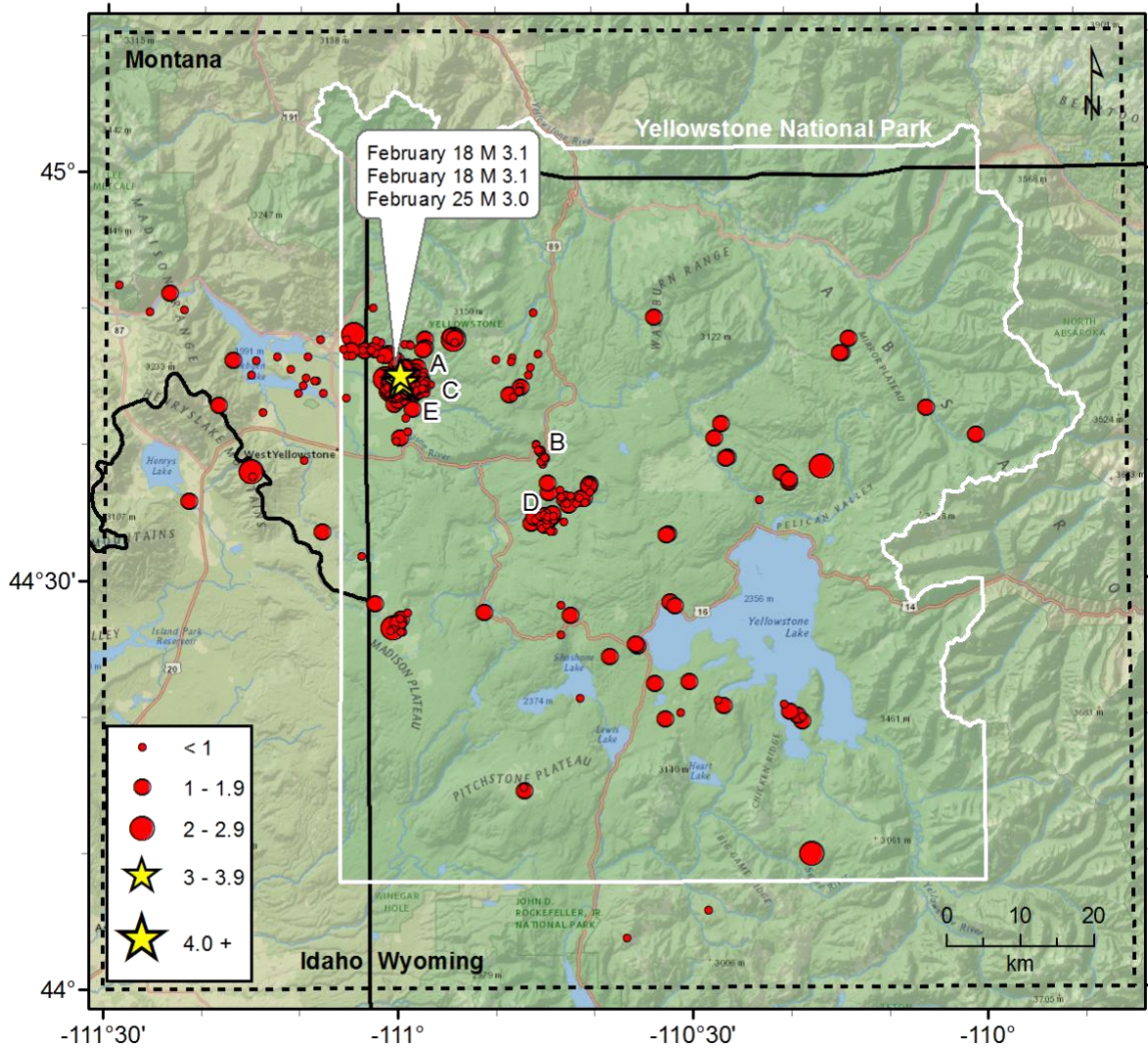


Figure 1. Epicenters of earthquakes located by the University of Utah Seismograph Stations, January 1, 2018, through March 31, 2018. Earthquake swarms (labeled A–E) are discussed in the text.

Table 1
EARTHQUAKES FELT IN THE YELLOWSTONE REGION
January 1, 2018 to March 31, 2018

Date	Time†	Felt Information‡	Latitude	Longitude	Magnitude§
February 25	08:10 MST 15:10 UTC	Yellowstone. Felt (III) at West Yellowstone, MT.	44° 45.24'	110° 59.70'	M _L 3.0

† Times are listed both as Local Time—Mountain Standard Time (MST) or Mountain Daylight Time (MDT)—and as Coordinated Universal Time (UTC).

? Indicates on-line reports that appear questionable given the distance from the source

‡ *CIIM* indicates the availability of a Community Internet Intensity Map

(<http://earthquake.usgs.gov/earthquakes/dyfi>), compiled by the U.S. Geological Survey (USGS); *ShakeMap* indicates the availability of computer-generated maps of ground-shaking (<http://quake.utah.edu>), produced by the University of Utah Seismograph Stations (UUSS). Roman numerals correspond to the Modified Mercalli intensity scale. Unless otherwise indicated, felt information is from the USGS (1) CIIM reports and/or (2) PDE Monthly (or) Weekly Listing Files (<http://earthquake.usgs.gov/data/pde.php>).

§ Richter local magnitude (M_L) or coda magnitude (M_C) determined by UUSS. If labeled “NEIC,” data are from the National Earthquake Information Center of the USGS.

Yellowstone Seismic Network March 31, 2018

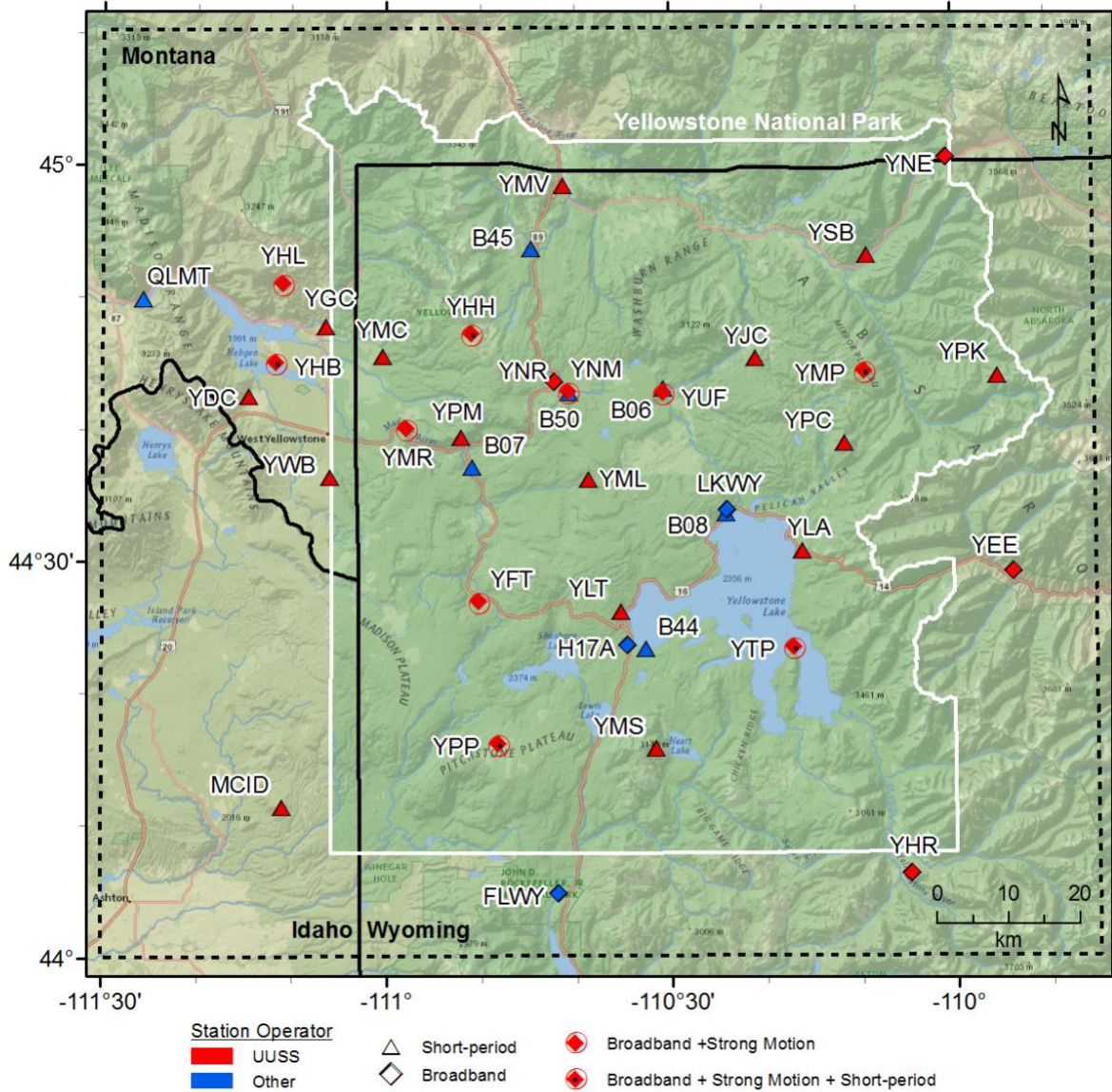


Figure 2. Seismograph stations of the Yellowstone Seismic Network as of March 31, 2018.

Table 2. Earthquakes in the Yellowstone Region: January 1–March 31, 2018

DATE	ORIGIN TIME	LATITUDE	LONGITUDE	DEPTH	MAG	NO	GAP	DMN	RMS
180101	18:13:33.80	44°33.72'	110°44.38'	6.1	0.6	6	155	9	0.05
180102	14:43:01.13	44°46.52'	111°12.48'	13.2	0.1	10	91	3	0.15
180102	17:26:41.38	44°40.56'	110°59.78'	5.4	1.5W	14	55	3	0.16
180102	18:25:54.64	44°45.14'	111°15.10'	12.3	0.3	17	128	5	0.14
180103	20:09:54.16	44°47.03'	111°00.31'	5.7	0.6	14	149	3	0.15
180104	02:25:37.50	44°40.35'	111°00.22'	4.6	0.6	11	88	3	0.18
180104	21:54:14.53	44°41.06'	110°59.04'	5.2	0.2	9	93	2	0.18
180105	06:45:33.32	44°47.80'	110°54.30'	5.1	2.1W	25	114	4	0.15
180105	08:18:34.85	44°44.95'	110°58.22'	3.5	0.2	8	133	3	0.06
180105	08:18:41.82	44°46.05'	111°00.33'	8.2	0.7	12	188	1	0.14
180105	08:19:02.34	44°44.61'	110°58.67'	3.2	-0.3	6	194	3	0.04
180105	08:24:41.89	44°45.91'	111°00.28'	8.1	0.5	13	172	1	0.16
180105	09:35:33.52	44°46.21'	111°00.17'	8.4	1.1W	19	137	1	0.17
180105	09:56:34.48	44°47.58'	110°54.22'	4.3	0.9	14	157	4	0.12
180105	10:20:30.85	44°44.82'	110°59.23'	4.6	-0.4	6	189	2	0.02
180105	10:21:08.03	44°45.46'	110°59.35'	7.1	0.2	13	154	1	0.12
180105	10:21:21.47	44°44.80'	111°00.28'	5.4	-0.4	7	142	1	0.05
180105	10:34:36.53	44°47.99'	110°54.57'	5.4	1.1W	19	126	5	0.16
180105	10:55:52.01	44°45.79'	110°59.91'	8.0	1.2W	19	142	1	0.17
180105	11:32:35.27	44°46.11'	111°00.38'	8.4	0.5	16	135	1	0.15
180105	12:56:15.89	44°46.29'	110°49.89'	8.3	0.5	14	155	2	0.14
180105	15:43:34.11	44°45.96'	111°00.55'	8.1	0.6W	16	133	1	0.14
180106	13:33:08.63	44°42.41'	111°13.88'	4.9	0.9	11	118	1	0.06
180106	16:21:51.52	44°37.25'	110°40.41'	5.0	0.7	12	127	3	0.13
180106	16:22:43.17	44°37.34'	110°40.65'	5.2	0.9	11	124	3	0.22
180107	19:18:41.16	44°47.87'	110°54.15'	4.8	1.0W	15	133	4	0.13
180108	02:06:12.63	44°49.73'	110°46.06'	3.8	0.6	13	136	7	0.09
180108	03:13:00.87	44°46.70'	110°45.58'	2.8	0.6	13	218	7	0.08
180108	22:08:07.25	44°49.33'	110°33.66'	8.2	1.1	16	131	12	0.18
180109	01:13:49.36	44°14.90'	110°47.16'	4.9	0.5	8	109	3	0.20
180109	01:14:27.45	44°14.64'	110°47.07'	4.6	1.2	11	110	3	0.24
180109	15:00:01.72	44°38.39'	110°16.49'	5.8	2.4W	21	96	7	0.13
180109	16:19:05.86	44°26.94'	110°59.98'	3.7*	0.9W	9	129	13	0.13
180109	16:19:27.00	44°27.77'	110°58.99'	5.7*	0.4	7	149	12	0.09
180110	18:55:27.53	44°46.98'	111°02.40'	8.0	1.3W	23	118	4	0.15
180110	18:55:52.82	44°46.78'	111°02.38'	7.7	0.1	12	141	3	0.15
180110	23:01:21.84	44°47.11'	110°57.27'	6.4	1.4W	21	154	5	0.14
180111	03:53:32.10	44°47.03'	110°57.39'	6.4	1.2W	20	120	5	0.14
180111	22:10:20.16	44°35.84'	111°21.45'	14.0	1.2	18	161	16	0.14
180112	01:31:24.92	44°39.34'	110°45.23'	5.4	0.6W	15	120	9	0.16
180112	02:32:56.18	44°39.29'	110°45.18'	4.8	0.2	14	121	9	0.13
180112	02:33:33.50	44°39.66'	110°45.63'	2.2	-0.5	8	189	8	0.11
180112	02:33:39.68	44°39.70'	110°45.45'	2.2	-0.3	8	190	8	0.09
180112	02:35:29.28	44°39.50'	110°45.20'	5.3	0.6	12	197	8	0.16
180112	02:35:43.62	44°39.47'	110°45.40'	3.4	0.4	13	118	8	0.13

Table 2. Earthquakes in the Yellowstone Region: January 1–March 31, 2018

DATE	ORIGIN TIME	LATITUDE	LONGITUDE	DEPTH	MAG	NO	GAP	DMN	RMS
180112	02:36:48.92	44°39.14'	110°44.97'	2.5	0.0	9	206	9	0.12
180112	02:37:00.15	44°39.68'	110°45.48'	2.1	0.5	12	113	9	0.12
180112	02:37:49.25	44°39.55'	110°45.52'	2.3	0.0	8	192	8	0.08
180112	02:38:11.48	44°39.65'	110°45.29'	2.1	0.1W	9	130	8	0.11
180112	02:38:16.59	44°39.54'	110°45.43'	2.5	0.2W	9	130	9	0.12
180112	02:40:03.65	44°39.22'	110°45.09'	2.2	0.1W	10	123	9	0.14
180112	02:41:04.37	44°39.65'	110°45.39'	2.6	0.0W	9	192	8	0.08
180112	02:41:17.62	44°39.20'	110°45.08'	6.3	0.8W	17	93	9	0.16
180112	02:41:55.35	44°46.99'	111°02.77'	7.4	-0.1	8	185	4	0.06
180112	02:50:42.66	44°39.03'	110°44.86'	7.4	0.8W	11	95	9	0.12
180112	02:51:26.99	44°40.06'	110°45.83'	4.4	0.3	13	109	8	0.16
180112	03:35:18.16	44°38.65'	110°45.10'	4.9	0.8W	7	135	8	0.17
180112	03:46:25.75	44°40.01'	110°45.79'	2.7	0.1	7	180	8	0.08
180112	08:07:34.76	44°39.55'	110°45.47'	2.1	0.1	12	116	8	0.11
180112	08:07:48.60	44°38.83'	110°45.08'	3.5	0.3	11	130	8	0.22
180112	18:35:42.86	44°39.64'	110°45.38'	5.4	0.1	12	192	8	0.16
180112	23:43:31.91	44°33.62'	111°07.80'	12.1	1.0W	19	136	6	0.14
180113	07:01:32.52	44°39.11'	110°44.83'	4.5	0.4	10	124	9	0.15
180113	07:01:45.91	44°39.16'	110°45.00'	2.6	0.2	8	205	9	0.05
180113	07:51:15.72	44°46.48'	111°09.29'	9.8	0.2	9	131	4	0.08
180113	09:48:55.04	44°44.99'	111°09.48'	8.2	0.4	9	162	7	0.14
180113	12:59:01.72	44°46.38'	111°01.81'	7.5	0.6	18	125	2	0.11
180114	04:22:34.23	44°44.75'	111°08.61'	13.0	0.1	12	68	4	0.14
180114	23:05:04.16	44°33.36'	110°32.48'	2.2	1.6W	16	80	10	0.14
180116	10:58:57.98	44°46.22'	111°16.99'	13.9	1.1	18	137	7	0.14
180116	23:36:32.76	44°33.44'	110°32.30'	4.6	1.6	16	82	10	0.20
180117	04:25:03.28	44°34.59'	110°45.85'	8.8	0.9W	11	103	8	0.06
180117	15:02:56.08	44°43.46'	111°05.32'	13.5	0.4	16	75	8	0.15
180119	15:18:35.91	44°28.49'	110°32.11'	4.2	1.6W	16	71	6	0.11
180119	15:28:09.05	44°28.16'	110°31.65'	4.6	1.2	13	76	6	0.11
180120	00:27:49.17	44°47.08'	111°05.62'	7.8	0.5	10	126	2	0.09
180120	01:21:10.87	44°46.59'	111°04.92'	10.5	0.6	12	126	3	0.11
180120	01:57:54.69	44°46.94'	111°04.88'	11.6	1.1	18	110	3	0.11
180120	13:44:20.25	44°46.61'	111°04.71'	9.0	0.0	11	130	3	0.10
180123	15:24:01.14	44°35.74'	110°41.70'	5.5	0.9W	12	140	4	0.17
180123	15:29:18.11	44°36.32'	110°42.27'	5.6	0.8W	10	122	5	0.12
180123	15:31:42.92	44°36.11'	110°41.16'	7.5	1.1W	12	115	3	0.12
180123	15:32:04.38	44°36.07'	110°40.91'	7.6	1.6W	18	62	3	0.09
180123	16:22:24.13	44°36.12'	110°41.39'	4.8	0.4	12	80	4	0.17
180123	18:29:47.70	44°35.77'	110°40.77'	7.5	0.9W	10	148	3	0.13
180123	18:52:57.68	44°46.45'	110°48.23'	6.2	0.9	22	86	4	0.20
180123	19:03:27.00	44°36.14'	110°41.35'	6.0	0.7	9	131	4	0.18
180124	19:31:02.10	44°46.55'	111°05.21'	10.1	0.4	10	139	3	0.13
180125	10:46:26.18	44°43.84'	111°10.26'	10.1	0.6	17	76	3	0.19
180125	17:44:48.73	44°28.35'	111°02.34'	6.0*	1.4	8	155	22	0.29

Table 2. Earthquakes in the Yellowstone Region: January 1–March 31, 2018

DATE	ORIGIN TIME	LATITUDE	LONGITUDE	DEPTH	MAG	NO	GAP	DMN	RMS
180125	19:19:54.04	44°26.88'	110°59.64'	4.3*	0.8	15	127	13	0.21
180125	19:25:58.71	44°26.54'	111°00.48'	4.4*	0.4	14	122	14	0.23
180125	19:26:09.15	44°27.21'	110°59.67'	4.3*	1.6	19	118	13	0.22
180125	19:58:00.53	44°27.34'	110°59.78'	3.7*	0.7	10	152	13	0.28
180125	19:58:09.93	44°26.43'	111°00.79'	5.3*	0.4	8	259	14	0.22
180126	15:26:53.68	44°26.59'	111°00.51'	3.9*	2.2W	23	122	14	0.22
180126	15:56:22.81	44°26.30'	110°59.47'	4.6*	0.8	8	127	12	0.10
180127	05:12:10.28	44°47.71'	111°02.30'	8.6	0.4	13	153	5	0.09
180127	05:25:13.50	44°31.89'	111°03.75'	14.9	0.4	15	130	9	0.15
180127	11:58:40.77	44°47.60'	111°01.77'	8.6	0.6	13	154	4	0.13
180127	13:38:08.29	44°46.16'	110°48.33'	4.9	0.6	9	179	4	0.08
180127	14:55:18.85	44°45.14'	110°46.60'	9.3	0.4	10	172	7	0.06
180128	08:29:13.14	44°38.92'	111°09.66'	10.3	-0.1	7	221	9	0.10
180129	05:15:13.36	44°44.41'	111°00.06'	7.0	1.1	13	75	2	0.09
180129	05:31:32.39	44°21.43'	110°41.37'	1.9*	0.9	7	182	12	0.22
180130	13:06:15.38	44°51.12'	111°23.57'	11.4	1.2	11	149	19	0.09
180130	22:56:02.85	44°24.48'	110°38.31'	4.0	1.5	6	123	5	0.05
180131	00:48:15.12	44°49.91'	111°22.06'	6.1	0.7	9	172	5	0.03
180201	03:39:40.73	44°20.35'	110°31.13'	3.3	0.2	10	117	6	0.09
180201	14:00:53.00	44°48.09'	111°04.57'	7.1	2.0W	20	124	2	0.12
180201	20:45:18.66	44°42.02'	110°59.25'	10.2	0.6	13	97	7	0.15
180202	17:56:39.04	44°43.86'	111°07.69'	13.5	0.2	14	80	6	0.13
180203	09:37:09.35	44°43.70'	110°48.55'	7.5	1.6W	21	76	7	0.15
180203	12:44:28.56	44°25.25'	110°35.47'	3.3	1.6	16	69	2	0.17
180204	02:12:41.02	44°44.44'	110°59.98'	6.9	1.1W	12	86	2	0.06
180205	12:21:01.99	44°33.69'	110°44.07'	7.5	0.8	9	92	9	0.09
180205	15:28:24.75	44°40.47'	110°27.52'	4.1	1.6W	14	113	6	0.15
180205	23:13:32.04	44°38.94'	110°26.27'	2.1	1.1W	12	126	10	0.13
180208	09:24:24.35	44°44.36'	111°00.05'	6.4	0.6	13	67	2	0.09
180209	15:13:46.85	44°45.71'	110°58.06'	4.8	1.6W	18	120	3	0.12
180210	04:20:36.59	44°45.36'	110°57.32'	8.4	0.9W	15	125	4	0.09
180210	04:57:02.27	44°44.54'	110°59.90'	6.8	0.4	13	83	2	0.13
180210	15:20:35.55	44°26.12'	110°43.30'	3.6	0.8	9	112	9	0.18
180210	17:19:59.93	44°36.24'	110°43.26'	2.6	-0.1	6	192	6	0.08
180210	17:20:08.88	44°36.73'	110°43.34'	2.1	0.7	7	179	6	0.04
180210	17:20:39.05	44°36.01'	110°42.92'	3.9	1.0	8	183	6	0.20
180210	17:21:49.11	44°35.57'	110°42.51'	8.8	1.0W	8	138	5	0.04
180210	17:22:14.68	44°35.74'	110°42.70'	7.3	0.0	7	134	6	0.12
180210	19:05:40.16	44°44.67'	111°00.38'	6.7	0.2	14	68	2	0.12
180210	23:03:03.07	44°44.68'	111°00.07'	6.6	0.3	13	80	2	0.07
180210	23:36:42.29	44°44.70'	111°00.27'	7.8	1.6W	16	72	2	0.11
180211	08:28:58.76	44°44.29'	111°00.02'	6.7	0.7	16	75	2	0.11
180211	11:12:17.30	44°44.38'	110°59.97'	6.6	1.2W	16	108	2	0.11
180212	22:47:04.73	44°44.90'	111°00.58'	7.2	0.3	13	115	1	0.12
180213	01:48:23.53	44°37.14'	110°40.28'	7.6	1.7W	25	56	3	0.18

Table 2. Earthquakes in the Yellowstone Region: January 1–March 31, 2018

DATE	ORIGIN TIME	LATITUDE	LONGITUDE	DEPTH	MAG	NO	GAP	DMN	RMS
180213	01:48:32.50	44°36.54'	110°40.35'	2.8*	0.9	10	171	12	0.24
180213	01:49:08.72	44°36.95'	110°40.37'	6.6	1.7W	31	56	3	0.19
180213	14:31:51.74	44°44.24'	110°59.68'	6.8	1.0W	14	83	3	0.09
180213	23:32:42.59	44°45.75'	110°46.43'	2.2	0.8	16	94	7	0.11
180215	05:10:32.02	44°42.59'	110°05.69'	1.2	1.3	9	125	6	0.10
180215	06:39:21.72	44°42.91'	111°18.42'	11.5	1.1	10	153	5	0.15
180215	06:40:54.57	44°44.40'	111°00.07'	7.0	1.0W	12	90	2	0.08
180215	09:54:50.12	44°44.35'	111°00.48'	7.7	2.0W	25	53	2	0.15
180215	16:08:06.75	44°44.20'	111°00.13'	8.0	2.3W	19	56	3	0.12
180215	16:17:22.47	44°44.23'	110°59.97'	6.3	0.3	10	87	3	0.10
180215	16:46:10.98	44°44.40'	111°00.10'	6.9	0.4	9	91	2	0.10
180215	17:19:07.80	44°44.74'	111°00.21'	7.6	1.2W	14	95	2	0.08
180215	17:21:42.90	44°44.79'	111°00.53'	7.8	0.6	8	162	1	0.08
180215	18:41:06.02	44°44.27'	111°00.42'	8.4	2.6W	27	54	2	0.13
180215	18:55:58.29	44°44.33'	111°00.05'	7.0	0.4	12	75	2	0.12
180215	19:11:16.24	44°43.97'	111°00.01'	6.9	1.6W	13	57	3	0.09
180215	20:14:58.51	44°44.42'	111°00.16'	7.9	2.0W	15	57	2	0.12
180215	20:25:34.57	44°44.23'	111°00.22'	7.0	0.2	9	68	2	0.11
180215	20:39:01.87	44°44.09'	110°59.52'	5.2	0.1	9	83	3	0.10
180215	21:11:03.79	44°44.20'	110°59.95'	7.7	1.4W	15	60	3	0.11
180215	21:16:17.30	44°44.52'	111°00.07'	7.7	0.6	10	89	2	0.11
180215	21:38:52.16	44°44.42'	110°59.96'	5.3	0.5	12	79	2	0.08
180215	23:50:06.93	44°44.01'	110°59.81'	6.4	0.9W	15	76	3	0.08
180215	23:53:53.44	44°44.44'	111°00.11'	8.7	1.5W	18	75	2	0.10
180215	23:54:26.92	44°44.05'	110°59.82'	7.1	0.8W	13	76	3	0.12
180216	01:01:27.45	44°44.15'	110°59.99'	7.9	2.0W	24	58	3	0.10
180216	01:06:04.61	44°44.12'	111°00.11'	8.1	0.9W	13	70	3	0.09
180216	02:43:46.83	44°44.65'	111°00.02'	7.3	1.6W	16	112	2	0.11
180216	02:56:42.24	44°44.02'	110°59.74'	6.2	0.5	12	81	3	0.12
180216	02:56:57.01	44°44.12'	110°59.78'	6.7	0.7	12	82	3	0.12
180216	03:19:33.52	44°44.90'	111°00.33'	8.1	2.2W	20	54	1	0.12
180216	03:25:13.54	44°44.73'	111°00.14'	7.7	1.4W	18	78	2	0.11
180216	03:26:54.19	44°44.12'	110°59.98'	6.2	0.4	12	88	3	0.10
180216	03:27:02.46	44°44.27'	110°59.95'	5.6	0.6	9	104	2	0.16
180216	03:35:14.17	44°43.94'	111°00.01'	6.2	0.4	12	88	3	0.12
180216	03:35:45.17	44°44.03'	110°59.72'	5.3	0.1	10	81	3	0.11
180216	03:38:08.80	44°44.03'	110°59.68'	6.1	1.0	15	111	3	0.09
180216	04:43:40.95	44°44.34'	111°00.11'	6.2	0.9	15	73	2	0.11
180216	08:14:50.52	44°44.53'	111°00.54'	7.9	2.1W	24	58	2	0.14
180216	10:16:55.59	44°44.26'	110°58.81'	4.2	0.3	8	144	3	0.08
180216	20:46:44.13	44°43.29'	110°59.45'	5.2	0.8	10	72	4	0.11
180216	20:57:37.77	44°44.02'	110°59.64'	6.8	0.3	16	68	3	0.10
180216	23:33:09.46	44°44.48'	110°59.68'	6.2	0.6	11	121	2	0.16
180217	02:21:33.04	44°37.18'	110°19.88'	5.0	1.9W	21	83	8	0.13
180217	02:41:56.34	44°37.41'	110°19.85'	5.5	1.1	7	128	8	0.13

Table 2. Earthquakes in the Yellowstone Region: January 1–March 31, 2018

DATE	ORIGIN TIME	LATITUDE	LONGITUDE	DEPTH	MAG	NO	GAP	DMN	RMS
180217	04:35:02.76	44°44.39'	110°59.88'	6.2	0.6	16	112	2	0.17
180217	04:44:15.84	44°44.48'	110°59.90'	6.7	0.9	14	113	2	0.16
180217	08:21:26.17	44°44.40'	110°59.82'	7.7	1.5	18	67	2	0.17
180217	09:23:38.28	44°44.37'	111°00.02'	6.7	0.8	13	76	2	0.12
180217	09:34:43.94	44°44.09'	110°59.90'	5.7	0.6	11	75	3	0.08
180217	11:55:08.34	44°44.49'	111°00.02'	6.6	0.2	9	117	2	0.08
180217	12:10:19.34	44°44.06'	110°59.77'	6.7	1.3W	19	63	3	0.16
180217	13:05:39.39	44°43.65'	110°59.29'	4.7	0.6	8	115	4	0.12
180217	13:12:49.32	44°44.09'	110°59.76'	6.2	0.8	17	64	3	0.12
180217	13:19:09.86	44°44.23'	110°59.44'	5.4	0.7	11	88	3	0.11
180217	13:23:54.89	44°44.04'	110°59.46'	6.3	0.7	18	70	3	0.16
180217	14:49:16.40	44°44.38'	110°59.73'	6.6	1.4W	15	85	2	0.11
180217	14:53:28.18	44°44.44'	111°00.04'	7.9	0.9	15	61	2	0.12
180217	15:08:44.54	44°44.84'	110°59.44'	11.7	0.9	13	109	2	0.19
180217	15:18:44.57	44°44.42'	110°59.87'	6.8	1.1	17	66	2	0.11
180217	16:24:12.78	44°44.17'	110°59.98'	7.5	0.8	15	68	3	0.14
180217	16:35:40.97	44°38.04'	111°15.03'	11.8	2.3W	22	116	8	0.15
180217	16:36:50.24	44°43.95'	110°59.61'	6.1	1.4W	19	68	3	0.16
180217	16:46:55.89	44°44.42'	110°59.69'	6.5	1.5W	17	86	2	0.11
180217	16:47:20.78	44°44.20'	110°59.48'	5.8	1.3	17	86	3	0.10
180217	16:56:51.13	44°44.44'	110°59.63'	6.5	0.7	13	116	2	0.10
180217	16:57:03.08	44°43.77'	110°59.28'	4.6	-0.1	10	175	4	0.12
180217	17:29:42.56	44°44.54'	110°59.67'	6.4	1.4W	16	91	2	0.13
180217	17:33:15.20	44°44.46'	110°59.58'	6.4	2.0W	20	76	2	0.13
180217	17:40:57.23	44°44.21'	110°59.74'	6.5	2.2W	22	66	3	0.12
180217	17:48:40.01	44°44.60'	111°00.01'	9.1	2.7W	29	51	2	0.22
180217	18:01:17.99	44°44.35'	110°59.17'	5.4	0.8	6	98	3	0.06
180217	18:03:57.57	44°44.50'	110°59.51'	6.9	1.9	21	79	2	0.10
180217	18:08:23.64	44°44.50'	110°59.46'	6.7	1.4W	11	95	2	0.08
180217	18:19:07.62	44°44.38'	110°58.93'	5.8	1.8	12	103	3	0.09
180217	18:25:23.72	44°44.93'	110°58.26'	2.0	0.6	9	128	3	0.15
180217	18:31:53.33	44°44.10'	110°59.32'	4.8	0.4	9	88	3	0.11
180217	18:36:18.93	44°44.37'	110°59.85'	7.7	1.4W	19	66	2	0.14
180217	18:36:37.52	44°44.58'	110°59.89'	6.4	0.5	13	85	2	0.14
180217	18:48:46.78	44°44.21'	110°59.59'	7.6	1.6W	21	70	3	0.16
180217	19:11:27.08	44°44.34'	110°59.94'	7.0	0.8	16	77	2	0.15
180217	19:35:14.54	44°45.40'	110°58.29'	10.0	1.3	10	126	10	0.10
180217	19:55:35.25	44°46.93'	111°03.48'	5.7	1.6W	9	194	5	0.26
180217	20:00:04.35	44°44.28'	110°59.75'	5.2	1.0	11	83	3	0.11
180217	20:01:02.54	44°44.23'	110°58.70'	4.8	1.3	8	101	3	0.09
180217	20:01:27.29	44°44.38'	110°58.87'	6.0	1.2	10	104	3	0.09
180217	20:10:47.62	44°43.96'	110°58.83'	5.3	0.8	11	92	4	0.12
180217	20:19:13.90	44°44.51'	110°59.51'	5.7	1.3	13	95	2	0.13
180217	20:22:16.93	44°44.16'	110°59.09'	4.9	1.2	9	93	3	0.13
180217	20:30:13.47	44°43.92'	110°59.46'	6.0	1.6W	16	68	3	0.13

Table 2. Earthquakes in the Yellowstone Region: January 1–March 31, 2018

DATE	ORIGIN TIME	LATITUDE	LONGITUDE	DEPTH	MAG	NO	GAP	DMN	RMS
180217	20:36:16.98	44°44.25'	110°59.80'	6.1	2.0W	20	65	3	0.15
180217	21:14:25.35	44°44.06'	110°59.12'	5.0	0.4	7	90	3	0.08
180217	21:17:00.32	44°27.76'	110°51.19'	6.9	1.1	7	131	2	0.07
180217	21:31:25.50	44°43.96'	110°59.41'	5.2	0.9	8	83	3	0.08
180217	21:35:19.68	44°44.30'	110°59.19'	5.9	1.6W	15	95	3	0.11
180217	22:17:07.14	44°44.49'	111°00.04'	6.2	1.2	13	122	2	0.11
180217	22:27:19.79	44°44.47'	110°59.91'	7.5	1.7	22	65	2	0.14
180217	23:00:26.51	44°44.57'	110°59.71'	7.8	1.5W	15	91	2	0.10
180217	23:03:45.02	44°44.34'	110°59.06'	5.4	0.4	9	109	3	0.14
180217	23:44:57.36	44°44.33'	110°58.99'	7.7	1.9W	20	48	3	0.15
180218	00:11:49.44	44°44.03'	110°59.32'	6.1	0.9	13	73	3	0.12
180218	00:28:08.51	44°44.10'	110°59.13'	5.3	1.7W	16	91	3	0.12
180218	00:34:55.03	44°44.22'	110°59.74'	6.0	1.9W	21	66	3	0.09
180218	00:41:51.55	44°44.33'	110°59.46'	5.8	1.4W	15	90	3	0.07
180218	00:45:54.03	44°44.10'	110°58.74'	6.0	1.0	10	97	3	0.06
180218	00:49:04.47	44°43.89'	110°58.97'	3.9	0.3	6	112	4	0.03
180218	00:49:28.70	44°44.14'	110°59.08'	5.7	0.4	7	93	3	0.04
180218	00:56:41.99	44°44.47'	110°59.03'	7.5	1.0	10	103	3	0.06
180218	00:58:28.31	44°43.46'	110°59.08'	4.8	1.0	12	79	4	0.11
180218	00:58:40.32	44°44.06'	110°59.42'	6.4	1.4	16	71	3	0.16
180218	01:15:19.59	44°44.20'	110°59.72'	6.3	1.4W	18	81	3	0.13
180218	01:45:00.94	44°43.88'	110°58.98'	4.4	0.9	7	88	4	0.06
180218	01:54:27.83	44°44.14'	110°59.46'	5.9	1.0	13	86	3	0.14
180218	02:00:30.32	44°44.00'	110°59.76'	8.1	2.5W	24	57	3	0.12
180218	02:03:44.01	44°43.97'	110°59.59'	6.8	1.1W	12	80	3	0.08
180218	02:19:57.66	44°43.96'	110°59.67'	7.4	2.4W	25	58	3	0.10
180218	02:23:38.35	44°44.14'	110°58.75'	5.5	1.5W	13	108	3	0.09
180218	02:26:46.45	44°44.31'	110°59.07'	5.5	1.6W	14	98	3	0.12
180218	02:40:13.72	44°43.30'	110°59.97'	5.2	1.1W	13	73	4	0.10
180218	02:57:08.09	44°44.02'	110°58.99'	6.2	1.8W	14	91	3	0.10
180218	03:02:48.50	44°44.10'	110°59.53'	6.3	1.3W	12	84	3	0.07
180218	03:23:29.69	44°42.65'	110°58.51'	0.7	1.0	8	116	6	0.19
180218	03:37:59.71	44°44.18'	110°59.68'	6.2	0.8	12	82	3	0.09
180218	04:07:46.26	44°44.13'	110°59.39'	5.1	0.6	8	123	3	0.09
180218	04:18:08.69	44°43.99'	110°59.01'	5.8	1.3W	11	90	3	0.07
180218	04:18:46.41	44°43.93'	110°59.45'	5.6	1.2W	14	81	3	0.16
180218	04:25:53.54	44°44.06'	110°57.96'	2.0	0.3	9	169	4	0.09
180218	04:27:30.51	44°44.07'	110°58.95'	6.0	1.7W	14	94	3	0.09
180218	04:28:28.67	44°44.56'	110°59.19'	9.1	2.7W	25	66	2	0.21
180218	04:35:56.46	44°43.71'	110°58.45'	4.7	0.8	10	119	4	0.15
180218	04:42:57.00	44°44.44'	110°58.96'	6.2	1.8W	14	104	3	0.10
180218	04:43:40.16	44°44.15'	110°59.74'	6.4	1.9W	19	65	3	0.13
180218	04:44:08.93	44°43.98'	110°59.18'	6.8	1.5W	11	152	3	0.08
180218	04:47:45.27	44°44.20'	110°58.99'	6.4	2.1W	20	82	3	0.11
180218	04:47:55.51	44°44.42'	110°58.89'	5.9	2.6W	15	89	3	0.13

Table 2. Earthquakes in the Yellowstone Region: January 1–March 31, 2018

DATE	ORIGIN TIME	LATITUDE	LONGITUDE	DEPTH	MAG	NO	GAP	DMN	RMS
180218	05:07:50.48	44°43.95'	110°59.45'	4.6	0.8	9	82	3	0.13
180218	05:09:22.88	44°43.89'	110°58.99'	5.0	0.5	10	88	4	0.08
180218	05:11:58.75	44°44.57'	110°59.27'	6.7	1.8W	14	103	2	0.09
180218	05:14:59.41	44°43.58'	110°59.87'	5.1	1.5W	10	71	4	0.08
180218	05:18:49.89	44°43.84'	110°58.87'	4.8	1.2	8	111	4	0.15
180218	05:22:40.58	44°43.51'	111°00.29'	3.4	0.7	10	71	4	0.10
180218	05:22:47.84	44°44.55'	110°59.48'	5.1	1.3W	11	120	2	0.13
180218	05:24:51.20	44°43.62'	110°59.33'	4.8	1.4W	12	78	4	0.15
180218	05:30:59.01	44°44.44'	110°59.14'	7.1	2.6W	18	86	3	0.10
180218	05:32:20.59	44°44.32'	110°59.24'	5.6	1.7	11	95	3	0.08
180218	05:32:53.48	44°44.06'	110°59.05'	6.6	2.5W	18	92	3	0.14
180218	05:37:46.53	44°44.76'	110°59.42'	9.9	3.1	40	67	2	0.19
180218	05:39:59.87	44°43.88'	110°59.75'	5.5	1.0	9	118	3	0.06
180218	05:50:06.71	44°43.72'	110°59.47'	5.0	0.7	9	78	4	0.08
180218	05:53:02.48	44°44.66'	110°59.68'	10.0	2.9	37	50	2	0.19
180218	05:55:30.78	44°43.89'	110°58.70'	6.3	2.6W	19	80	4	0.11
180218	05:59:24.25	44°44.23'	110°59.27'	6.5	1.4	18	77	3	0.12
180218	05:59:57.77	44°44.23'	110°59.16'	5.2	0.4	10	133	3	0.19
180218	06:00:34.47	44°44.10'	110°59.05'	5.7	1.1	13	92	3	0.11
180218	06:02:20.69	44°44.20'	110°59.12'	5.5	1.0W	9	94	3	0.09
180218	06:02:39.16	44°44.13'	110°58.87'	5.6	0.8	16	82	3	0.14
180218	06:10:09.20	44°44.05'	111°00.23'	7.4	1.3	16	53	3	0.12
180218	06:10:15.30	44°44.29'	110°59.27'	6.0	2.7W	12	72	3	0.12
180218	06:11:13.54	44°44.49'	110°59.65'	7.7	2.0W	19	74	2	0.14
180218	06:11:48.25	44°44.50'	110°58.58'	6.1	1.4W	16	112	3	0.12
180218	06:12:16.08	44°44.63'	110°59.08'	5.0	0.7	11	118	2	0.14
180218	06:12:59.27	44°44.61'	110°58.90'	7.0	2.2W	17	111	3	0.11
180218	06:22:30.61	44°44.05'	110°58.80'	5.3	1.6W	12	82	3	0.09
180218	06:23:25.85	44°44.28'	110°58.94'	5.8	1.2	14	85	3	0.08
180218	06:31:49.44	44°44.10'	110°58.85'	6.1	2.2W	18	96	3	0.14
180218	06:37:11.97	44°44.26'	110°59.69'	6.4	1.2	18	68	3	0.18
180218	06:48:11.47	44°44.21'	110°58.73'	5.6	1.3W	15	100	3	0.11
180218	07:23:18.55	44°43.74'	110°59.71'	4.9	0.8	15	74	3	0.14
180218	07:33:01.71	44°44.16'	110°57.55'	5.4	-0.1	7	110	5	0.07
180218	07:37:53.57	44°43.97'	110°59.48'	3.4	0.5	10	82	3	0.16
180218	07:47:09.68	44°44.09'	110°59.54'	6.1	1.2	19	68	3	0.13
180218	08:05:11.75	44°44.21'	110°59.04'	6.4	1.6	20	81	3	0.14
180218	08:14:09.14	44°44.36'	110°59.30'	5.3	0.1	8	169	3	0.10
180218	08:23:33.78	44°43.99'	110°57.98'	4.5	1.2W	12	103	4	0.15
180218	08:31:11.06	44°44.59'	110°58.95'	7.0	1.0	16	110	3	0.12
180218	08:32:07.08	44°44.14'	110°59.43'	5.4	0.9W	10	173	3	0.12
180218	08:32:22.70	44°44.38'	110°59.04'	6.4	1.5W	16	100	3	0.12
180218	08:36:38.19	44°44.46'	111°00.08'	7.2	1.1	16	60	2	0.11
180218	08:42:00.18	44°44.72'	110°59.41'	6.2	0.8W	14	105	2	0.11
180218	08:42:51.08	44°44.34'	110°59.14'	5.4	0.3	11	97	3	0.16

Table 2. Earthquakes in the Yellowstone Region: January 1–March 31, 2018

DATE	ORIGIN TIME	LATITUDE	LONGITUDE	DEPTH	MAG	NO	GAP	DMN	RMS
180218	08:43:07.92	44°44.68'	110°59.18'	6.2	0.8	10	108	2	0.21
180218	08:43:17.26	44°43.90'	110°59.49'	6.5	0.9	9	126	3	0.12
180218	08:43:44.40	44°44.36'	110°59.22'	6.5	1.2	17	82	3	0.13
180218	08:48:08.37	44°44.41'	110°59.01'	6.5	1.6W	19	87	3	0.14
180218	08:51:11.75	44°44.26'	110°59.08'	7.3	1.8W	17	82	3	0.14
180218	08:53:49.08	44°44.24'	110°58.98'	0.8	1.1	16	83	3	0.19
180218	08:54:54.37	44°44.64'	110°59.55'	7.3	1.7W	19	81	2	0.15
180218	09:02:51.08	44°44.27'	110°58.92'	6.8	0.8	17	99	3	0.16
180218	09:03:09.71	44°44.26'	110°59.70'	6.4	2.0	19	68	3	0.15
180218	09:03:30.52	44°44.43'	110°59.39'	6.5	1.2	17	95	2	0.14
180218	09:04:12.31	44°44.47'	110°59.65'	6.8	1.8W	20	74	2	0.13
180218	09:06:34.88	44°44.24'	110°59.17'	5.2	0.2	9	110	3	0.11
180218	09:06:59.36	44°44.24'	110°59.13'	6.3	0.7	15	94	3	0.11
180218	09:08:22.29	44°44.04'	110°58.54'	5.2	0.2	12	98	4	0.26
180218	09:08:39.12	44°44.11'	110°57.96'	4.2	0.3	12	106	4	0.14
180218	09:09:28.57	44°44.28'	110°59.62'	7.8	1.1	19	70	3	0.15
180218	09:11:53.64	44°44.46'	110°59.53'	6.4	2.0W	21	77	2	0.18
180218	09:16:46.78	44°44.30'	110°59.12'	7.2	2.6W	25	76	3	0.14
180218	09:19:59.88	44°44.29'	110°58.54'	5.7	1.1W	13	105	3	0.10
180218	09:23:40.34	44°44.30'	110°58.70'	6.7	1.7W	18	104	3	0.09
180218	09:23:59.47	44°44.13'	110°58.51'	6.5	2.4W	21	87	4	0.12
180218	09:27:57.94	44°44.35'	110°59.45'	6.6	1.3	18	76	3	0.14
180218	09:28:32.55	44°44.50'	110°58.79'	7.8	1.8W	20	93	3	0.14
180218	09:30:11.17	44°44.32'	110°58.85'	7.4	1.8W	20	88	3	0.13
180218	09:35:32.55	44°44.10'	110°59.07'	4.9	0.5	10	92	3	0.07
180218	09:51:08.50	44°44.34'	110°58.43'	6.0	1.2W	15	108	3	0.08
180218	09:57:01.85	44°44.14'	110°58.97'	6.3	0.8	14	80	3	0.11
180218	10:01:17.88	44°44.22'	110°59.22'	6.0	0.4	13	93	3	0.10
180218	10:01:55.79	44°44.60'	110°59.16'	6.8	0.5	15	90	2	0.14
180218	10:07:55.10	44°44.52'	110°59.14'	7.9	2.4W	16	104	3	0.10
180218	10:10:53.66	44°44.26'	110°59.08'	6.7	0.9	16	82	3	0.17
180218	10:18:17.38	44°44.50'	110°59.27'	6.7	0.7	13	100	2	0.10
180218	10:19:08.73	44°44.33'	110°58.88'	6.8	0.7	16	87	3	0.14
180218	10:25:15.18	44°43.84'	110°58.38'	4.7	0.3	12	95	4	0.10
180218	10:25:41.37	44°43.91'	110°58.81'	5.0	0.0	10	131	4	0.13
180218	10:28:35.28	44°44.57'	110°59.27'	7.9	1.9W	23	80	2	0.15
180218	10:40:47.70	44°44.36'	111°00.03'	6.5	1.6W	19	60	2	0.15
180218	10:49:08.67	44°43.78'	110°58.94'	3.7	0.4	9	172	4	0.11
180218	10:51:36.06	44°44.39'	110°58.96'	7.3	1.9W	19	87	3	0.13
180218	10:53:03.45	44°44.28'	110°58.56'	6.1	1.6W	19	91	3	0.12
180218	10:58:07.35	44°44.06'	110°59.15'	4.9	0.9	11	90	3	0.12
180218	11:00:16.96	44°43.79'	110°59.25'	4.9	0.6	12	83	4	0.14
180218	11:10:50.91	44°44.05'	110°58.20'	5.0	0.1	10	102	4	0.13
180218	11:13:25.35	44°44.29'	110°59.65'	7.3	2.1W	20	64	3	0.15
180218	11:21:11.13	44°44.58'	110°58.56'	6.7	0.8	15	115	3	0.13

Table 2. Earthquakes in the Yellowstone Region: January 1–March 31, 2018

DATE	ORIGIN TIME	LATITUDE	LONGITUDE	DEPTH	MAG	NO	GAP	DMN	RMS
180218	11:26:35.23	44°44.44'	110°58.75'	6.1	0.8	17	108	3	0.13
180218	11:41:49.66	44°44.43'	110°59.66'	7.1	1.1	19	73	2	0.16
180218	11:58:54.64	44°44.34'	110°59.94'	5.2	0.8	12	86	2	0.11
180218	12:03:48.83	44°43.88'	110°58.95'	4.6	0.6	12	115	4	0.20
180218	12:05:20.25	44°43.94'	110°58.44'	4.5	0.5	13	97	4	0.15
180218	12:13:09.97	44°44.21'	110°59.64'	5.8	0.8	11	84	3	0.13
180218	12:15:17.06	44°44.30'	110°58.50'	5.6	0.9	13	106	3	0.11
180218	12:15:43.46	44°44.44'	110°59.17'	6.8	0.9	19	85	3	0.15
180218	12:27:47.84	44°44.48'	110°58.79'	7.1	2.4W	17	93	3	0.08
180218	12:28:43.46	44°44.55'	110°58.50'	6.5	1.7W	17	99	3	0.10
180218	12:29:04.79	44°44.49'	110°58.72'	8.0	2.5W	22	94	3	0.14
180218	12:35:32.63	44°44.04'	110°58.40'	4.9	0.3	13	100	4	0.13
180218	12:50:18.36	44°44.22'	110°58.58'	6.0	1.2	17	89	3	0.11
180218	12:59:26.12	44°44.34'	110°58.88'	6.6	0.6	17	103	3	0.12
180218	12:59:40.37	44°44.34'	110°58.99'	7.5	1.9W	18	85	3	0.12
180218	13:07:10.16	44°44.45'	110°58.74'	6.1	0.6	17	108	3	0.13
180218	13:12:16.57	44°44.25'	110°58.48'	6.6	1.6W	17	91	3	0.12
180218	13:12:34.82	44°44.30'	110°58.29'	6.4	1.7W	20	95	4	0.12
180218	13:23:17.13	44°44.15'	110°59.51'	7.4	0.8	13	85	3	0.07
180218	13:28:33.03	44°44.01'	110°59.12'	5.1	0.7	11	118	3	0.15
180218	13:29:00.51	44°43.93'	110°59.05'	4.6	0.3	12	88	3	0.20
180218	13:48:31.57	44°44.32'	110°58.68'	5.5	0.4	10	105	3	0.15
180218	13:49:55.09	44°44.73'	110°59.09'	9.9	2.9W	32	48	2	0.19
180218	13:50:15.03	44°44.47'	110°59.13'	6.6	2.0	8	133	3	0.10
180218	13:56:32.66	44°44.36'	110°58.80'	6.8	1.1	15	104	3	0.11
180218	14:15:25.40	44°44.34'	110°58.82'	7.0	0.8	21	89	3	0.16
180218	14:17:07.21	44°44.49'	110°59.37'	10.1	2.7W	32	66	2	0.21
180218	14:21:56.80	44°44.33'	110°59.17'	5.9	--	9	96	3	0.09
180218	14:26:10.76	44°44.31'	111°00.11'	5.8	1.1	21	57	2	0.15
180218	14:26:24.12	44°43.96'	111°00.34'	5.6	0.4	14	156	3	0.17
180218	14:30:40.54	44°44.34'	110°59.64'	6.8	0.7	12	86	2	0.15
180218	14:38:44.10	44°43.82'	110°58.46'	5.0	0.3	10	94	4	0.13
180218	14:40:08.96	44°44.46'	110°59.57'	6.8	2.0W	20	76	2	0.10
180218	14:41:26.42	44°44.53'	110°58.76'	8.1	1.2	16	94	3	0.13
180218	14:43:11.04	44°44.81'	110°59.53'	7.5	1.1	15	105	2	0.11
180218	14:46:48.55	44°44.64'	110°59.54'	5.8	0.8	15	81	2	0.08
180218	14:50:49.27	44°44.44'	110°59.13'	6.9	1.7W	19	86	3	0.12
180218	15:06:24.75	44°44.41'	110°58.32'	6.7	1.7W	16	97	3	0.10
180218	15:13:18.73	44°44.19'	110°58.54'	3.6	1.0	7	175	4	0.10
180218	15:14:11.21	44°44.12'	110°59.00'	4.8	1.0	13	104	3	0.15
180218	15:17:17.10	44°44.68'	110°59.56'	10.3	2.9W	32	49	2	0.20
180218	15:18:35.32	44°44.31'	110°59.26'	6.6	2.1W	24	74	3	0.15
180218	15:19:05.70	44°43.86'	110°59.53'	5.6	0.7	12	106	3	0.18
180218	15:22:24.93	44°44.36'	111°00.38'	8.2	1.4	20	53	2	0.16
180218	15:23:42.98	44°44.36'	110°59.01'	6.5	1.3W	15	101	3	0.13

Table 2. Earthquakes in the Yellowstone Region: January 1–March 31, 2018

DATE	ORIGIN TIME	LATITUDE	LONGITUDE	DEPTH	MAG	NO	GAP	DMN	RMS
180218	15:23:53.88	44°44.64'	110°59.60'	9.9	2.7W	25	49	2	0.21
180218	15:26:15.29	44°44.59'	110°59.33'	7.7	1.2	15	86	2	0.11
180218	15:29:16.26	44°44.68'	110°59.84'	9.8	3.1W	33	63	2	0.19
180218	15:30:13.30	44°44.21'	110°59.75'	6.1	1.6	20	60	3	0.18
180218	15:33:14.49	44°44.40'	110°59.34'	5.9	0.8	8	95	3	0.05
180218	15:35:54.40	44°44.54'	110°59.57'	6.2	1.4	15	78	2	0.11
180218	15:37:07.45	44°44.36'	110°59.61'	5.1	0.9	13	122	2	0.11
180218	15:37:17.07	44°44.08'	110°59.39'	4.9	1.4	15	86	3	0.19
180218	15:40:28.05	44°44.59'	110°59.17'	5.5	1.1	12	105	2	0.14
180218	15:41:47.92	44°44.39'	110°58.94'	6.2	0.1	10	103	3	0.15
180218	15:42:01.46	44°44.02'	110°59.30'	5.4	0.5	11	86	3	0.13
180218	15:44:13.28	44°44.23'	110°59.59'	8.9	2.4W	19	97	11	0.12
180218	15:46:31.78	44°44.41'	110°59.59'	6.4	2.5W	19	73	2	0.12
180218	15:57:02.33	44°44.24'	110°59.06'	5.9	0.8	17	96	3	0.14
180218	15:57:32.91	44°44.27'	110°58.93'	6.5	1.9W	16	85	3	0.13
180218	16:01:31.66	44°44.35'	110°59.54'	7.0	1.8W	18	74	2	0.13
180218	16:07:35.78	44°44.45'	111°00.11'	5.8	0.6	15	59	2	0.11
180218	16:28:29.98	44°44.17'	110°58.33'	4.6	0.8	8	104	4	0.08
180218	16:35:49.26	44°44.10'	110°58.47'	0.9	0.5	9	103	4	0.23
180218	16:58:08.71	44°44.27'	110°58.95'	5.6	0.6	13	98	3	0.15
180218	17:09:33.61	44°44.50'	110°59.41'	5.3	0.8	10	96	2	0.08
180218	17:27:37.88	44°44.26'	110°58.69'	6.1	0.9	16	102	3	0.16
180218	17:34:17.76	44°45.01'	110°58.89'	10.1	2.8W	31	67	2	0.18
180218	17:36:21.47	44°44.64'	110°59.48'	7.1	1.1	19	83	2	0.15
180218	17:40:25.60	44°44.35'	110°58.97'	6.6	0.6	12	101	3	0.11
180218	17:43:06.53	44°44.56'	110°58.96'	7.8	2.8W	30	86	3	0.15
180218	17:50:06.00	44°44.41'	110°59.72'	6.9	1.8W	21	70	2	0.16
180218	18:02:13.84	44°44.12'	110°59.52'	5.0	0.8	12	84	3	0.10
180218	18:12:05.41	44°44.21'	110°57.36'	2.0	0.0	9	112	5	0.24
180218	18:12:17.37	44°44.06'	110°58.37'	5.4	0.8	12	101	4	0.12
180218	18:13:56.22	44°44.16'	110°58.58'	5.6	0.6	15	101	4	0.14
180218	18:17:03.40	44°44.31'	110°58.78'	6.3	0.9	18	103	3	0.13
180218	18:24:58.99	44°44.37'	110°58.29'	4.9	0.4	8	147	4	0.14
180218	18:31:12.76	44°44.49'	110°58.74'	7.7	2.3W	21	88	3	0.12
180218	19:10:35.80	44°50.10'	111°02.56'	0.5	0.3	7	239	9	0.21
180218	19:11:08.46	44°44.34'	110°59.14'	4.7	-0.2	8	121	3	0.12
180218	19:15:56.05	44°44.63'	110°58.48'	6.7	1.0	20	101	3	0.13
180218	19:32:29.91	44°43.93'	110°59.34'	3.1	0.3	9	123	3	0.13
180218	19:36:10.95	44°44.41'	110°58.49'	6.3	0.5	14	110	3	0.17
180218	19:46:59.50	44°44.52'	110°59.29'	6.3	0.8	15	100	2	0.16
180218	20:08:14.09	44°44.36'	110°58.42'	6.1	0.8	17	109	3	0.09
180218	20:19:47.35	44°44.58'	111°00.06'	5.9	0.6	14	102	2	0.12
180218	20:20:15.35	44°44.27'	111°00.22'	5.7	0.8	16	104	2	0.17
180218	20:20:44.88	44°47.74'	111°08.01'	3.0	0.6	5	120	2	0.01
180218	20:22:23.84	44°44.65'	110°59.01'	8.1	2.3W	21	88	2	0.12

Table 2. Earthquakes in the Yellowstone Region: January 1–March 31, 2018

DATE	ORIGIN TIME	LATITUDE	LONGITUDE	DEPTH	MAG	NO	GAP	DMN	RMS
180218	20:28:20.69	44°44.33'	110°58.98'	6.9	1.8W	18	85	3	0.11
180218	20:34:11.35	44°44.48'	110°58.93'	6.7	0.9	21	90	3	0.10
180218	20:37:25.43	44°44.44'	111°00.17'	5.6	0.6	12	93	2	0.12
180218	20:41:19.61	44°44.43'	110°58.65'	6.3	1.8W	21	94	3	0.10
180218	20:47:11.80	44°44.00'	110°59.15'	5.2	0.5	13	118	3	0.13
180218	20:51:14.70	44°44.70'	110°59.21'	6.0	0.3	11	109	2	0.13
180218	20:59:45.21	44°44.80'	111°00.38'	8.9	2.4W	28	52	1	0.16
180218	21:06:01.65	44°43.96'	110°59.47'	5.0	0.7	16	81	3	0.17
180218	21:14:52.79	44°43.89'	110°58.91'	4.3	0.3	11	89	4	0.10
180218	21:15:36.34	44°44.13'	110°58.81'	4.3	0.5	9	109	3	0.13
180218	21:19:51.50	44°44.35'	110°59.14'	5.9	0.8	15	109	3	0.15
180218	21:21:15.41	44°44.43'	110°58.28'	6.6	0.8	19	98	3	0.13
180218	21:23:22.93	44°44.24'	110°59.40'	5.5	0.5	12	171	3	0.14
180218	21:23:35.81	44°44.59'	110°59.32'	7.0	1.5W	19	102	2	0.08
180218	21:34:22.58	44°44.36'	110°58.89'	4.6	0.5	14	103	3	0.16
180218	21:35:10.40	44°44.65'	111°00.14'	5.1	0.1	13	103	2	0.12
180218	21:40:13.18	44°44.29'	110°59.25'	5.4	0.8	15	94	3	0.17
180218	21:40:30.58	44°43.90'	110°59.75'	5.4	0.3	10	106	3	0.16
180218	21:42:34.29	44°44.51'	110°58.87'	5.2	0.5	8	108	3	0.07
180218	21:43:01.90	44°43.91'	110°58.55'	4.4	0.9	9	107	4	0.16
180218	21:45:44.94	44°44.27'	110°59.05'	5.4	0.6	8	98	3	0.05
180218	21:51:57.87	44°44.54'	110°59.20'	7.6	0.9	6	126	2	0.11
180218	21:52:38.32	44°44.24'	110°59.13'	6.4	0.8	9	132	3	0.09
180218	21:58:08.80	44°44.17'	110°58.61'	5.3	0.4	14	101	3	0.09
180218	22:02:25.80	44°44.86'	110°59.96'	8.2	1.4	18	90	1	0.12
180218	22:02:54.52	44°44.40'	110°58.82'	7.3	0.8	12	90	3	0.09
180218	22:12:02.42	44°44.96'	111°00.15'	7.9	1.9W	21	84	1	0.11
180218	22:19:13.21	44°44.58'	110°59.65'	6.4	1.1	14	93	2	0.06
180218	22:21:43.40	44°44.91'	111°00.20'	8.4	1.6W	17	79	1	0.11
180218	22:25:06.02	44°45.65'	110°59.40'	5.2	1.0	15	130	1	0.25
180218	22:46:15.52	44°45.20'	110°58.79'	6.8	0.5	10	124	2	0.08
180218	22:54:20.24	44°45.33'	110°59.24'	8.2	0.6	10	145	2	0.09
180218	23:14:06.14	44°45.06'	111°00.10'	8.4	1.2	18	91	1	0.10
180218	23:23:23.55	44°44.72'	110°59.04'	6.8	0.8	14	113	2	0.09
180218	23:27:55.23	44°44.46'	110°59.97'	6.7	0.9	18	79	2	0.11
180218	23:33:34.89	44°44.61'	110°59.88'	6.5	0.4	12	86	2	0.11
180218	23:35:40.60	44°44.44'	110°59.80'	6.8	0.7	12	85	2	0.09
180218	23:45:04.33	44°44.94'	110°59.47'	6.8	0.4	12	114	2	0.08
180219	00:26:27.63	44°44.90'	111°00.13'	7.6	0.7	17	65	1	0.10
180219	00:51:03.81	44°43.68'	111°00.34'	4.5	1.1	13	61	3	0.19
180219	01:33:02.79	44°45.08'	110°59.87'	7.3	1.0	16	87	1	0.12
180219	01:39:10.73	44°44.57'	110°58.58'	6.6	0.8	9	115	3	0.08
180219	01:58:58.15	44°44.44'	110°59.31'	6.5	1.0	15	81	3	0.17
180219	02:00:13.39	44°44.35'	110°59.60'	5.4	0.6	12	88	2	0.11
180219	02:12:59.16	44°44.41'	110°59.91'	7.7	2.5W	23	58	2	0.14

Table 2. Earthquakes in the Yellowstone Region: January 1–March 31, 2018

DATE	ORIGIN TIME	LATITUDE	LONGITUDE	DEPTH	MAG	NO	GAP	DMN	RMS
180219	02:13:56.69	44°44.67'	110°59.79'	8.1	2.4W	27	50	2	0.17
180219	02:14:21.53	44°44.36'	110°59.42'	6.7	1.2	11	77	3	0.09
180219	02:14:39.59	44°44.23'	110°59.38'	6.2	1.7	18	75	3	0.13
180219	02:15:16.63	44°44.76'	111°00.06'	6.3	1.5	17	65	2	0.12
180219	02:17:30.46	44°44.46'	110°59.80'	5.7	1.4W	17	69	2	0.13
180219	02:18:48.41	44°44.58'	111°00.07'	6.9	1.1	18	79	2	0.13
180219	02:19:16.74	44°47.43'	110°58.83'	-3.4	0.8	6	158	4	0.28
180219	02:21:58.05	44°44.27'	110°59.64'	5.9	1.6W	16	69	3	0.15
180219	02:23:56.73	44°44.77'	110°59.97'	8.0	--	13	87	2	0.14
180219	02:24:00.94	44°43.50'	110°58.97'	4.7	1.3	11	103	4	0.08
180219	02:27:23.62	44°44.27'	110°59.59'	6.1	0.7	13	86	3	0.15
180219	02:28:13.56	44°44.18'	111°00.38'	10.2	2.2W	33	43	3	0.24
180219	02:31:23.41	44°44.35'	110°59.98'	5.4	0.7	15	61	2	0.15
180219	02:31:54.25	44°44.55'	111°00.03'	6.3	1.5W	13	76	2	0.08
180219	02:32:37.15	44°44.41'	111°00.15'	6.6	1.7W	21	56	2	0.14
180219	02:36:24.06	44°44.35'	111°00.51'	7.1	1.1	18	53	2	0.15
180219	02:39:52.64	44°44.31'	110°59.63'	7.2	0.9	20	70	3	0.14
180219	03:02:36.75	44°44.86'	110°59.93'	7.8	0.6	13	92	1	0.15
180219	03:09:19.60	44°44.40'	110°59.46'	4.8	0.3	8	120	2	0.12
180219	03:09:53.61	44°44.32'	110°58.69'	5.3	0.3	9	104	3	0.12
180219	03:23:12.16	44°44.23'	110°59.72'	5.5	2.3	12	114	3	0.14
180219	03:23:42.86	44°44.64'	111°00.24'	5.1	1.4	14	72	2	0.12
180219	03:25:49.39	44°44.22'	110°59.94'	4.9	0.9	12	154	3	0.17
180219	03:28:17.98	44°44.12'	110°59.94'	6.2	1.3	17	59	3	0.11
180219	03:32:17.76	44°44.73'	111°00.48'	7.6	1.1	17	64	2	0.14
180219	03:40:31.58	44°44.67'	110°59.94'	6.4	0.5	9	86	2	0.06
180219	03:47:16.23	44°44.14'	110°59.83'	5.9	1.3	16	63	3	0.11
180219	03:49:25.61	44°44.20'	111°00.07'	5.1	1.0	12	90	3	0.17
180219	03:55:29.20	44°44.15'	111°00.01'	4.9	0.8	12	88	3	0.16
180219	03:59:02.30	44°44.60'	111°00.25'	6.0	0.5	8	96	2	0.03
180219	04:05:59.23	44°44.86'	110°58.75'	7.1	0.9	15	124	2	0.16
180219	04:07:23.75	44°44.60'	110°58.90'	7.9	2.1W	24	89	3	0.13
180219	04:10:49.79	44°44.21'	110°59.85'	7.7	1.4	18	63	3	0.12
180219	04:20:29.59	44°44.73'	110°59.10'	7.3	0.8	14	112	2	0.11
180219	04:27:43.87	44°44.21'	110°59.87'	7.1	1.9W	21	62	3	0.14
180219	04:32:07.93	44°43.91'	110°59.07'	4.3	0.5	10	136	4	0.17
180219	04:33:30.01	44°43.98'	110°59.28'	4.1	1.0	14	86	3	0.18
180219	04:34:36.04	44°43.86'	110°57.11'	0.0	0.6	6	104	5	0.17
180219	04:36:31.73	44°44.45'	110°59.60'	6.2	1.1	19	75	2	0.13
180219	04:36:57.90	44°44.38'	110°59.64'	6.6	1.7W	19	87	2	0.13
180219	04:44:48.43	44°44.34'	110°59.24'	6.6	0.6	10	96	3	0.09
180219	04:54:33.03	44°44.56'	111°00.26'	7.0	2.1W	25	52	2	0.14
180219	05:02:10.66	44°44.34'	111°00.46'	5.7	0.4	11	63	2	0.09
180219	05:08:38.92	44°44.24'	110°59.69'	6.2	1.6W	19	68	3	0.14
180219	05:10:47.89	44°44.44'	110°56.68'	0.8	0.6	9	120	5	0.14

Table 2. Earthquakes in the Yellowstone Region: January 1–March 31, 2018

DATE	ORIGIN TIME	LATITUDE	LONGITUDE	DEPTH	MAG	NO	GAP	DMN	RMS
180219	05:20:50.92	44°44.38'	110°59.29'	4.7	0.5	9	116	3	0.23
180219	05:31:38.86	44°45.12'	110°58.69'	8.6	0.6	17	104	2	0.16
180219	05:46:54.39	44°44.27'	110°59.38'	2.1	0.4	13	98	3	0.18
180219	05:55:41.64	44°44.59'	111°00.37'	7.8	2.2W	23	52	2	0.13
180219	06:00:19.69	44°44.42'	110°59.16'	5.8	1.0	13	99	3	0.15
180219	06:02:35.03	44°44.16'	110°58.84'	4.9	1.3	12	98	3	0.14
180219	06:22:48.77	44°44.41'	110°58.76'	5.7	0.9	16	106	3	0.16
180219	06:31:09.26	44°44.24'	110°59.37'	6.3	1.3W	16	76	3	0.17
180219	06:34:33.03	44°44.05'	110°58.98'	5.1	1.4	16	93	3	0.14
180219	06:34:45.27	44°44.69'	110°59.52'	5.2	0.6	8	119	2	0.10
180219	06:39:36.38	44°44.19'	110°59.88'	5.0	0.6	9	152	3	0.15
180219	06:50:44.45	44°44.13'	110°59.15'	4.8	0.5	12	92	3	0.15
180219	06:55:02.83	44°44.45'	111°00.46'	6.9	1.8W	19	63	2	0.13
180219	07:11:16.75	44°44.54'	110°59.54'	6.0	0.3	7	95	2	0.09
180219	07:14:28.84	44°44.19'	110°59.24'	5.8	1.5	19	77	3	0.11
180219	07:22:59.86	44°44.57'	110°58.85'	7.1	0.5	9	110	3	0.08
180219	07:34:58.60	44°44.14'	110°58.74'	6.1	0.5	10	99	3	0.09
180219	07:50:29.48	44°44.52'	111°00.26'	7.4	2.0W	22	54	2	0.13
180219	08:09:30.85	44°44.67'	110°59.62'	6.5	1.1	15	96	2	0.12
180219	08:11:27.94	44°44.79'	110°59.87'	6.2	0.7	12	92	2	0.13
180219	08:23:59.82	44°44.81'	111°00.26'	6.3	1.1	15	65	1	0.11
180219	08:32:33.25	44°44.87'	111°00.42'	7.6	1.2	17	52	1	0.17
180219	09:24:46.78	44°44.53'	110°59.78'	6.6	0.3	11	87	2	0.13
180219	09:40:32.05	44°44.31'	110°59.57'	7.0	0.9	11	115	3	0.17
180219	09:41:13.20	44°44.66'	110°59.12'	6.8	1.2	16	92	2	0.15
180219	09:44:55.63	44°44.00'	110°59.05'	5.9	0.7	15	77	3	0.12
180219	10:01:30.97	44°44.54'	110°59.03'	8.2	1.6W	20	66	3	0.18
180219	10:52:32.11	44°44.29'	111°00.20'	5.2	0.8	17	54	2	0.15
180219	11:33:49.18	44°44.20'	110°59.52'	5.4	1.0	14	85	3	0.17
180219	11:34:00.93	44°44.49'	110°59.67'	5.8	0.6	11	90	2	0.13
180219	12:15:44.83	44°44.54'	110°59.09'	7.2	1.8W	18	89	3	0.11
180219	12:24:38.69	44°45.02'	110°59.23'	8.1	1.9W	23	94	2	0.17
180219	12:31:52.93	44°44.03'	110°59.76'	4.6	0.4	11	82	3	0.10
180219	12:33:26.65	44°44.17'	111°00.16'	5.2	0.4	15	77	3	0.15
180219	12:34:50.81	44°44.00'	110°59.00'	5.2	0.5	13	91	3	0.13
180219	12:39:50.40	44°44.33'	110°59.15'	5.9	1.0	17	82	3	0.15
180219	12:54:11.61	44°44.41'	111°00.37'	6.5	0.6	18	66	2	0.15
180219	13:12:31.34	44°44.28'	110°59.47'	6.9	2.4W	27	74	3	0.13
180219	13:16:05.16	44°44.04'	110°59.28'	5.5	0.5	15	87	3	0.13
180219	13:22:34.29	44°44.23'	111°00.32'	5.6	1.3	17	53	2	0.11
180219	13:27:17.93	44°43.73'	110°59.28'	4.4	0.3	13	115	4	0.17
180219	13:33:32.37	44°44.94'	111°00.31'	7.8	1.5W	17	54	1	0.13
180219	13:37:53.93	44°44.61'	110°59.85'	6.9	1.2	14	71	2	0.11
180219	13:54:29.71	44°44.87'	111°00.10'	7.1	1.0	15	66	1	0.10
180219	13:55:57.00	44°44.53'	111°00.53'	6.2	0.8	13	106	2	0.08

Table 2. Earthquakes in the Yellowstone Region: January 1–March 31, 2018

DATE	ORIGIN TIME	LATITUDE	LONGITUDE	DEPTH	MAG	NO	GAP	DMN	RMS
180219	14:02:16.77	44°43.88'	110°58.95'	5.2	0.4	14	116	4	0.13
180219	14:02:43.64	44°44.04'	110°59.21'	6.3	0.5	13	119	3	0.14
180219	14:33:03.54	44°44.38'	110°59.63'	6.1	0.8	15	88	2	0.15
180219	14:50:28.13	44°43.60'	111°00.08'	7.0	0.2	11	89	4	0.24
180219	15:05:56.52	44°44.35'	110°58.62'	5.9	0.3	9	141	3	0.11
180219	15:06:10.56	44°44.16'	111°00.18'	5.0	0.6	14	146	3	0.13
180219	15:06:55.74	44°44.83'	110°59.42'	6.6	-0.3	9	114	2	0.12
180219	15:09:37.24	44°44.59'	111°00.47'	5.3	0.7	14	56	2	0.13
180219	15:15:23.45	44°44.39'	110°59.03'	6.8	1.0	16	86	3	0.13
180219	15:22:14.78	44°43.82'	110°58.56'	5.1	0.3	14	92	4	0.16
180219	15:39:01.02	44°44.99'	110°59.27'	8.0	1.7	14	121	2	0.09
180219	15:42:55.34	44°44.72'	111°00.70'	6.5	1.0	18	64	2	0.12
180219	15:47:02.64	44°44.45'	110°59.18'	6.0	0.5	9	100	3	0.10
180219	16:15:37.15	44°44.37'	110°59.29'	6.5	0.5	14	96	3	0.17
180219	16:31:36.20	44°44.06'	110°59.35'	5.3	0.3	12	86	3	0.11
180219	17:33:38.98	44°44.53'	111°00.58'	5.5	--	8	176	2	0.14
180219	17:48:23.46	44°44.76'	110°59.18'	6.4	-0.3	8	117	2	0.15
180219	18:30:09.01	44°44.09'	111°00.12'	4.9	0.6	13	92	3	0.13
180219	18:30:24.51	44°43.72'	110°59.44'	6.3	0.4	11	78	4	0.07
180219	18:33:31.51	44°44.13'	110°59.19'	6.1	1.0	9	111	3	0.12
180219	18:33:51.29	44°44.33'	110°59.01'	6.6	0.3	11	100	3	0.15
180219	18:35:21.05	44°45.05'	110°59.18'	9.5	1.5	13	122	2	0.09
180219	18:35:58.55	44°44.27'	110°59.00'	6.5	2.1W	24	68	3	0.13
180219	18:37:27.95	44°44.35'	110°58.76'	4.9	-0.3	7	113	3	0.16
180219	18:37:39.08	44°47.38'	110°58.73'	1.6	-0.1	7	157	4	0.22
180219	18:37:55.91	44°44.50'	110°58.83'	5.8	0.7	13	108	3	0.12
180219	18:39:19.69	44°44.40'	110°59.32'	6.0	1.1	15	95	3	0.11
180219	18:39:34.75	44°44.08'	110°59.28'	6.3	0.7	16	88	3	0.13
180219	18:46:05.19	44°44.40'	110°58.67'	6.2	0.5	15	107	3	0.15
180219	18:46:26.06	44°44.49'	110°59.39'	7.9	0.2	11	213	12	0.12
180219	18:49:31.01	44°44.49'	110°59.00'	8.1	2.5W	26	83	3	0.14
180219	18:54:16.51	44°44.28'	110°58.55'	5.8	0.5	12	105	3	0.11
180219	18:57:34.62	44°44.40'	110°58.62'	6.7	0.7	15	108	3	0.11
180219	19:01:20.69	44°44.22'	110°58.61'	5.5	0.5	12	103	3	0.14
180219	19:03:32.84	44°44.69'	110°59.70'	7.2	0.7	12	95	2	0.12
180219	19:15:44.69	44°44.88'	110°59.08'	10.5	0.8	11	120	2	0.17
180219	19:35:56.90	44°44.40'	111°00.58'	7.7	1.9W	21	86	2	0.16
180219	19:42:21.10	44°44.34'	110°59.46'	6.2	1.4	15	90	3	0.12
180219	20:16:39.15	44°45.05'	110°59.95'	7.4	0.6	13	100	1	0.09
180219	20:25:44.94	44°44.74'	111°00.66'	6.3	--	14	63	2	0.12
180219	20:37:14.54	44°44.10'	110°59.04'	5.0	0.6	11	127	3	0.16
180219	20:56:42.96	44°44.48'	111°00.48'	6.2	1.0	14	63	2	0.08
180219	21:01:50.69	44°44.44'	111°00.44'	5.9	0.9	14	64	2	0.09
180219	21:13:48.24	44°44.43'	111°00.52'	6.5	1.5	19	61	2	0.13
180219	21:27:58.34	44°44.71'	110°59.47'	6.7	0.8	11	103	2	0.11

Table 2. Earthquakes in the Yellowstone Region: January 1–March 31, 2018

DATE	ORIGIN TIME	LATITUDE	LONGITUDE	DEPTH	MAG	NO	GAP	DMN	RMS
180219	21:31:46.77	44°45.05'	110°58.31'	8.5	1.0	15	122	3	0.10
180219	22:18:46.76	44°44.59'	111°00.55'	6.4	1.4	17	61	2	0.14
180219	22:56:28.57	44°44.49'	111°00.54'	6.8	1.8W	18	54	2	0.13
180219	23:19:47.56	44°44.52'	111°00.52'	6.1	0.5	13	107	2	0.06
180219	23:21:26.85	44°45.14'	110°58.73'	7.8	0.8	12	104	2	0.09
180219	23:30:01.95	44°44.53'	111°00.28'	6.2	-0.1	15	53	2	0.12
180219	23:30:06.94	44°44.77'	110°59.77'	5.6	0.4	5	206	2	0.04
180219	23:37:33.02	44°44.12'	110°58.83'	7.1	0.4	12	97	3	0.17
180220	00:27:38.76	44°44.56'	111°00.24'	6.3	1.0	17	72	2	0.10
180220	00:34:55.11	44°44.96'	110°59.07'	8.1	0.6	11	124	2	0.15
180220	00:37:44.92	44°44.48'	111°00.71'	6.6	0.9	9	179	2	0.10
180220	00:46:04.88	44°44.67'	111°00.07'	5.9	0.9	14	80	2	0.15
180220	01:40:20.31	44°44.40'	110°59.90'	6.7	1.0	15	81	2	0.15
180220	02:21:35.04	44°44.92'	111°00.02'	8.0	1.0	15	90	1	0.12
180220	02:35:54.38	44°44.40'	111°00.07'	6.2	0.8	12	75	2	0.08
180220	04:31:22.60	44°43.99'	110°59.23'	4.3	0.4	10	121	3	0.18
180220	06:01:08.74	44°43.94'	110°59.48'	6.1	0.2	11	127	3	0.11
180220	06:41:34.30	44°44.64'	111°00.20'	7.2	1.2	17	74	2	0.11
180220	06:43:37.33	44°44.73'	111°00.52'	6.8	0.7	12	62	2	0.05
180220	10:09:46.69	44°44.37'	111°00.18'	6.3	0.5	15	94	2	0.18
180220	10:26:47.73	44°44.16'	111°00.28'	7.8	0.4	13	96	3	0.13
180220	10:43:34.62	44°44.98'	111°00.38'	7.3	0.9	15	70	1	0.08
180220	10:55:46.74	44°44.47'	110°58.92'	7.2	0.5	12	122	3	0.17
180220	10:56:00.14	44°44.23'	110°58.54'	2.1	0.1	9	156	3	0.12
180220	11:24:18.33	44°45.01'	111°00.42'	7.6	1.7W	17	68	1	0.11
180220	13:07:06.03	44°44.42'	110°58.65'	7.1	1.9W	17	108	3	0.14
180220	13:58:50.91	44°44.44'	111°00.44'	9.1	2.1W	24	64	2	0.13
180220	13:59:21.66	44°44.75'	110°59.46'	7.1	1.3	10	143	2	0.12
180220	14:04:22.83	44°44.44'	110°58.68'	6.5	0.5	11	109	3	0.04
180220	14:18:53.81	44°45.05'	110°59.71'	6.9	0.6	11	111	1	0.07
180220	14:31:30.00	44°44.41'	111°00.48'	6.7	1.4W	15	63	2	0.12
180220	14:51:15.56	44°44.68'	111°00.83'	6.3	0.9	14	71	2	0.06
180220	15:21:39.87	44°44.33'	111°00.14'	7.8	0.3	8	92	2	0.05
180220	15:32:58.16	44°43.82'	111°00.21'	7.0	1.7W	15	64	3	0.15
180220	18:00:38.81	44°44.70'	111°00.67'	6.6	0.6	11	115	2	0.06
180220	18:45:15.60	44°44.10'	111°00.48'	8.5	2.5W	21	54	3	0.13
180220	18:58:19.29	44°44.27'	111°00.12'	7.9	0.4	13	71	2	0.07
180220	19:52:13.14	44°43.99'	110°59.09'	5.3	0.4	9	135	3	0.11
180220	20:06:02.83	44°44.34'	111°00.42'	8.3	0.7	13	65	2	0.09
180220	21:06:55.57	44°43.67'	111°00.07'	7.3	0.3	12	90	4	0.12
180220	22:59:47.03	44°44.12'	111°00.54'	9.2	2.0W	19	55	3	0.12
180221	00:38:16.53	44°44.04'	111°00.67'	9.1	2.7W	24	55	3	0.14
180221	01:08:30.68	44°44.40'	111°09.73'	13.3	0.4	9	84	3	0.10
180221	01:35:36.19	44°44.47'	110°58.36'	7.1	0.4	13	113	3	0.16
180221	01:43:05.90	44°44.04'	111°00.48'	5.0	0.4	15	62	3	0.16

Table 2. Earthquakes in the Yellowstone Region: January 1–March 31, 2018

DATE	ORIGIN TIME	LATITUDE	LONGITUDE	DEPTH	MAG	NO	GAP	DMN	RMS
180221	02:08:20.59	44°44.79'	110°58.71'	7.5	0.7	12	152	3	0.09
180221	03:02:28.35	44°43.66'	110°59.67'	6.6	0.4	11	81	4	0.14
180221	03:09:00.55	44°44.08'	110°59.94'	8.3	1.6W	17	74	3	0.12
180221	03:09:18.11	44°43.86'	110°59.60'	8.0	1.9W	17	77	3	0.11
180221	03:45:28.71	44°44.17'	110°59.97'	8.8	1.8W	20	74	3	0.11
180221	03:48:19.30	44°44.16'	110°59.91'	7.4	0.8	14	76	3	0.10
180221	03:55:46.58	44°44.76'	111°00.65'	6.8	1.3W	15	63	2	0.10
180221	03:59:40.73	44°44.72'	111°00.53'	6.7	1.1	15	62	2	0.10
180221	04:04:31.60	44°44.63'	111°00.46'	9.1	1.0	14	64	2	0.11
180221	04:18:11.16	44°42.99'	111°00.40'	5.8	1.4W	10	113	5	0.10
180221	05:03:08.80	44°44.22'	111°00.17'	5.8	0.6	14	70	2	0.16
180221	07:11:14.21	44°44.13'	111°01.34'	6.1	0.4	9	181	3	0.13
180221	07:43:18.18	44°43.60'	110°59.47'	4.7	0.8	14	76	4	0.14
180221	08:05:33.87	44°43.74'	111°00.89'	6.8	0.1	9	107	3	0.08
180221	08:14:04.72	44°43.79'	111°00.08'	6.3	0.5	12	90	3	0.12
180221	09:46:36.35	44°44.07'	110°58.94'	5.6	0.0	7	131	3	0.16
180221	09:46:51.05	44°43.97'	110°59.81'	7.1	0.5	9	136	3	0.12
180221	09:55:08.48	44°44.57'	111°00.58'	8.8	0.7	14	60	2	0.10
180221	09:59:49.97	44°44.17'	111°00.62'	8.8	1.7W	20	54	3	0.13
180221	10:15:31.02	44°43.54'	111°00.80'	5.3	0.8	11	175	4	0.19
180221	11:14:05.08	44°44.28'	110°58.69'	6.7	0.9	16	89	3	0.12
180221	11:55:04.49	44°43.84'	110°59.93'	7.9	0.4	12	71	3	0.12
180221	12:32:52.91	44°44.89'	110°59.77'	8.5	1.5W	16	82	1	0.13
180221	13:17:13.65	44°44.80'	110°59.47'	8.1	0.5	15	106	2	0.15
180221	14:44:59.97	44°44.22'	111°00.08'	5.9	0.5	15	57	3	0.10
180221	15:24:58.56	44°43.90'	110°59.65'	8.1	1.4W	15	64	3	0.12
180221	16:23:15.84	44°43.95'	111°00.06'	7.8	1.5W	14	55	3	0.08
180221	17:09:23.45	44°44.20'	110°59.99'	9.1	1.6W	14	75	3	0.11
180221	17:29:26.01	44°44.32'	110°59.77'	8.3	0.6	12	83	2	0.18
180221	17:43:21.95	44°44.01'	110°59.94'	8.2	1.6W	15	59	3	0.13
180221	17:49:28.84	44°44.07'	110°59.84'	8.0	2.2W	20	76	3	0.13
180221	18:49:02.86	44°44.38'	110°59.41'	5.8	0.6	14	93	3	0.13
180221	22:03:09.62	44°44.12'	111°00.73'	5.8	0.9	17	56	3	0.12
180221	22:10:36.20	44°43.86'	111°00.51'	5.5	0.4	9	72	3	0.10
180222	00:04:34.82	44°44.07'	110°59.43'	8.0	0.7	11	85	3	0.09
180222	00:11:47.10	44°44.99'	110°59.57'	7.6	0.2	14	114	1	0.18
180222	00:21:49.55	44°44.27'	110°58.92'	6.3	0.4	14	99	3	0.14
180222	01:13:17.56	44°44.89'	110°59.47'	7.1	-0.4	7	123	2	0.13
180222	01:13:33.73	44°44.14'	110°59.08'	5.5	0.3	11	94	3	0.13
180222	02:44:16.57	44°44.01'	111°00.85'	7.0	1.6W	20	57	3	0.13
180222	02:56:23.74	44°44.97'	110°59.39'	7.5	1.3W	16	99	2	0.12
180222	03:35:48.18	44°44.49'	110°59.08'	7.3	0.4	18	88	3	0.13
180222	03:50:18.52	44°44.60'	110°59.12'	7.2	0.7	20	90	2	0.14
180222	03:53:47.99	44°45.09'	110°59.72'	9.6	1.9W	19	78	1	0.13
180222	03:54:09.39	44°44.76'	110°59.01'	7.1	0.8	15	115	2	0.17

Table 2. Earthquakes in the Yellowstone Region: January 1–March 31, 2018

DATE	ORIGIN TIME	LATITUDE	LONGITUDE	DEPTH	MAG	NO	GAP	DMN	RMS
180222	04:19:10.26	44°44.74'	110°59.43'	8.7	1.5W	20	88	2	0.15
180222	04:19:49.16	44°45.27'	110°59.65'	9.8	2.2W	19	125	1	0.11
180222	06:59:13.79	44°45.27'	110°59.89'	10.2	2.2W	26	79	1	0.16
180222	07:00:21.15	44°44.89'	110°59.80'	8.1	1.0	17	80	1	0.14
180222	07:01:49.30	44°44.64'	110°59.57'	6.8	0.6	12	97	2	0.15
180222	07:05:03.94	44°44.65'	110°59.62'	7.3	1.3W	16	96	2	0.17
180222	08:04:22.80	44°44.70'	110°59.49'	6.8	0.1	9	102	2	0.10
180222	08:05:05.82	44°44.91'	110°59.27'	7.4	-0.1	14	117	2	0.14
180222	08:05:16.11	44°44.59'	110°59.39'	7.1	0.4	17	84	2	0.15
180222	08:29:42.67	44°45.13'	110°59.87'	6.6	0.5	7	138	1	0.04
180222	08:49:07.83	44°45.05'	110°59.61'	10.0	2.6W	28	71	1	0.16
180222	08:56:30.66	44°45.09'	110°59.72'	9.3	1.9W	21	78	1	0.13
180222	08:59:30.72	44°44.54'	110°59.12'	6.9	0.3	13	104	3	0.13
180222	09:00:09.88	44°44.81'	110°58.98'	7.6	0.3	11	118	2	0.14
180222	09:24:27.34	44°45.14'	110°59.50'	9.6	1.8W	18	153	1	0.12
180222	09:34:03.38	44°44.53'	110°59.48'	7.0	0.2	13	96	2	0.15
180222	09:34:19.44	44°44.50'	110°59.13'	6.5	0.2	13	103	3	0.13
180222	10:05:14.30	44°44.74'	110°59.25'	7.1	0.6	12	110	2	0.08
180222	12:09:16.43	44°44.13'	111°00.78'	7.0	0.7	14	57	3	0.11
180222	13:09:44.12	44°44.57'	111°00.83'	7.2	0.3	11	66	2	0.12
180222	13:10:03.38	44°44.24'	111°01.10'	6.9	0.0	8	120	3	0.08
180222	13:17:27.78	44°45.15'	110°59.72'	9.9	2.3W	24	78	1	0.13
180222	13:18:19.45	44°45.21'	110°59.57'	8.9	1.7W	18	105	1	0.11
180222	13:59:22.22	44°45.03'	110°59.56'	8.8	1.4W	16	97	1	0.12
180222	15:31:02.47	44°44.97'	110°59.25'	7.9	0.7	16	103	2	0.11
180222	15:34:41.36	44°44.80'	110°59.21'	8.1	1.7W	23	96	2	0.15
180222	15:35:10.45	44°44.55'	110°59.03'	6.7	0.8	20	91	3	0.13
180222	16:02:52.69	44°45.38'	111°00.00'	9.0	0.5	10	129	1	0.07
180222	16:03:13.02	44°44.14'	110°58.63'	6.3	0.6	10	100	3	0.10
180222	16:21:26.28	44°44.64'	110°59.60'	6.5	0.6	12	96	2	0.06
180222	17:35:16.73	44°44.81'	110°59.45'	7.8	1.2	12	108	2	0.11
180222	17:36:43.04	44°44.81'	110°59.62'	7.4	0.5	12	102	2	0.09
180222	18:16:41.93	44°44.72'	111°00.90'	6.6	1.4W	18	54	2	0.11
180222	18:49:44.99	44°45.05'	110°59.33'	8.3	1.6W	16	124	2	0.10
180222	19:32:15.97	44°45.16'	110°59.39'	8.1	0.3	12	129	1	0.07
180222	19:34:31.83	44°44.98'	110°59.87'	7.9	1.0	13	100	1	0.14
180222	19:41:10.17	44°44.82'	110°59.71'	7.3	0.5	11	100	2	0.06
180222	20:45:33.66	44°45.27'	110°59.52'	7.9	0.4	8	135	1	0.06
180222	20:59:15.32	44°44.80'	110°59.38'	6.7	0.6	12	109	2	0.08
180222	21:02:35.97	44°44.54'	110°59.85'	7.2	0.6	13	85	2	0.08
180222	21:17:22.89	44°45.03'	110°59.71'	10.2	2.7W	34	71	1	0.16
180222	21:59:45.34	44°44.03'	110°59.70'	5.8	0.4	9	132	3	0.13
180222	22:20:20.51	44°44.35'	110°59.13'	7.1	0.8	15	98	3	0.13
180222	22:26:42.57	44°44.89'	110°59.59'	9.3	2.6W	32	70	2	0.15
180222	22:35:44.07	44°44.55'	110°59.24'	7.2	0.4	14	102	2	0.14

Table 2. Earthquakes in the Yellowstone Region: January 1–March 31, 2018

DATE	ORIGIN TIME	LATITUDE	LONGITUDE	DEPTH	MAG	NO	GAP	DMN	RMS
180222	23:03:48.96	44°44.98'	110°59.43'	9.2	1.7W	23	99	2	0.16
180222	23:13:50.10	44°44.84'	110°59.24'	8.3	2.2W	24	97	2	0.14
180222	23:26:48.83	44°44.76'	110°59.43'	7.9	2.1W	22	88	2	0.13
180222	23:41:58.44	44°45.24'	110°59.21'	8.2	0.5	13	125	2	0.11
180222	23:46:05.95	44°44.62'	111°00.67'	6.8	0.9	14	60	2	0.07
180222	23:57:54.12	44°44.62'	111°00.22'	6.9	0.8	16	73	2	0.12
180223	00:02:31.02	44°44.96'	110°59.11'	8.8	1.8W	20	103	2	0.14
180223	00:02:57.34	44°44.71'	110°59.20'	8.0	1.3	18	93	2	0.16
180223	00:37:41.37	44°44.89'	110°59.32'	7.7	0.8	17	96	2	0.14
180223	01:01:57.92	44°44.75'	110°59.20'	8.2	2.3W	23	87	2	0.13
180223	01:27:25.54	44°44.86'	110°59.18'	7.9	0.4	17	117	2	0.12
180223	02:06:56.80	44°44.92'	110°59.38'	9.0	1.8W	20	97	2	0.14
180223	02:19:44.27	44°44.31'	110°59.56'	6.8	0.7	19	87	3	0.16
180223	02:23:09.16	44°44.41'	110°59.57'	6.9	0.4	15	90	2	0.14
180223	02:46:30.05	44°44.47'	110°59.62'	7.3	0.6	14	91	2	0.13
180223	02:52:43.41	44°45.24'	110°58.98'	8.0	0.7	16	105	2	0.15
180223	03:04:58.76	44°44.88'	110°59.14'	8.6	2.0W	25	101	2	0.14
180223	04:19:26.28	44°45.04'	111°00.18'	8.2	0.5	15	84	1	0.15
180223	04:29:06.16	44°44.56'	110°59.54'	6.1	0.3	11	95	2	0.12
180223	05:24:50.74	44°44.94'	110°59.63'	9.5	2.7W	32	49	2	0.15
180223	05:28:18.95	44°44.81'	110°59.21'	8.3	1.0	19	96	2	0.15
180223	05:32:44.20	44°44.62'	110°59.33'	6.7	0.9	12	103	2	0.12
180223	05:35:10.29	44°44.96'	110°59.68'	7.9	1.0	14	89	1	0.14
180223	05:48:35.95	44°45.12'	110°59.17'	6.8	0.1	11	123	2	0.12
180223	06:32:05.19	44°44.38'	111°00.56'	5.5	0.3	10	106	2	0.11
180223	06:42:47.62	44°44.31'	110°58.68'	6.6	0.1	13	104	3	0.12
180223	07:11:32.18	44°44.64'	110°59.18'	7.7	0.7	17	107	2	0.15
180223	09:48:20.75	44°44.49'	110°59.53'	6.2	0.5	13	94	2	0.14
180223	10:27:15.90	44°44.57'	110°58.68'	7.0	0.3	16	113	3	0.13
180223	12:28:13.07	44°44.27'	110°58.77'	6.5	0.4	12	102	3	0.11
180223	12:43:39.89	44°44.48'	110°58.19'	6.6	0.3	13	116	4	0.12
180223	13:52:31.83	44°43.45'	110°59.83'	6.6	0.7	13	68	4	0.09
180223	15:21:01.60	44°43.68'	110°59.91'	7.2	1.3W	15	56	4	0.12
180223	20:49:17.87	44°44.22'	110°59.04'	6.6	0.6	16	96	3	0.13
180223	23:11:45.82	44°44.19'	111°00.07'	5.8	0.5	13	72	3	0.14
180223	23:20:25.60	44°44.23'	111°00.31'	5.5	0.5	14	66	2	0.14
180224	01:16:39.30	44°43.82'	110°59.90'	8.0	0.3	14	71	3	0.14
180224	03:49:05.92	44°43.45'	110°59.95'	5.1	0.4	12	66	4	0.13
180224	03:56:30.89	44°37.18'	110°44.60'	6.1	1.1W	16	66	8	0.16
180224	06:39:04.08	44°44.28'	111°00.48'	10.6	1.4	20	66	10	0.13
180224	11:20:15.86	44°44.72'	110°58.68'	7.8	1.5W	17	102	3	0.12
180224	12:46:44.31	44°44.70'	110°58.73'	7.7	0.8	18	101	3	0.12
180224	12:47:57.64	44°44.62'	110°58.40'	7.0	0.7	10	118	3	0.09
180224	12:54:13.90	44°45.17'	110°58.49'	9.3	1.3	16	95	3	0.14
180224	12:57:40.55	44°44.60'	110°58.53'	7.8	1.5W	17	100	3	0.08

Table 2. Earthquakes in the Yellowstone Region: January 1–March 31, 2018

DATE	ORIGIN TIME	LATITUDE	LONGITUDE	DEPTH	MAG	NO	GAP	DMN	RMS
180224	13:07:18.75	44°44.20'	110°58.29'	7.7	1.6W	19	92	4	0.15
180224	13:07:45.87	44°44.46'	110°58.65'	8.0	1.9W	22	89	3	0.13
180224	13:10:18.88	44°44.74'	110°58.58'	8.8	2.1W	21	118	3	0.11
180224	13:27:05.14	44°44.57'	110°58.61'	7.9	1.5W	18	98	3	0.10
180224	13:29:13.54	44°44.50'	110°58.56'	8.2	1.8W	18	97	3	0.11
180224	13:29:36.03	44°44.47'	110°58.29'	7.2	1.2	16	99	3	0.11
180224	13:38:44.71	44°44.53'	110°58.57'	7.7	0.9	13	98	3	0.10
180224	13:48:00.48	44°44.74'	110°58.58'	7.9	0.8	16	102	3	0.12
180224	13:53:54.97	44°44.76'	110°58.17'	0.5	1.6	6	125	3	0.03
180224	13:55:18.59	44°44.63'	110°58.41'	7.8	0.9	16	101	3	0.10
180224	13:55:54.31	44°44.77'	110°58.53'	8.4	1.4	16	102	3	0.08
180224	13:57:53.03	44°44.91'	110°58.46'	7.5	0.7	13	103	3	0.10
180224	14:11:35.97	44°44.71'	110°58.80'	7.5	1.3	14	100	3	0.11
180224	14:12:00.91	44°44.23'	110°58.21'	6.1	0.7	14	107	4	0.13
180224	14:21:59.25	44°44.48'	110°58.63'	7.8	--	12	95	3	0.08
180224	14:25:27.81	44°44.71'	110°58.56'	7.3	0.7	15	101	3	0.13
180224	14:31:40.34	44°44.54'	110°59.02'	7.8	0.4	10	107	3	0.13
180224	15:41:00.24	44°44.55'	110°58.43'	8.4	2.0W	18	115	3	0.12
180224	17:44:36.68	44°43.99'	110°58.43'	6.2	0.4	10	98	4	0.11
180224	17:44:56.69	44°44.95'	110°58.74'	7.9	0.9	10	128	2	0.12
180224	18:07:26.81	44°44.74'	110°58.63'	7.9	0.8	9	120	3	0.07
180224	18:18:37.78	44°44.32'	110°58.50'	6.8	0.6	9	106	3	0.09
180224	18:56:48.55	44°44.51'	110°58.64'	7.6	1.9W	18	90	3	0.08
180224	21:41:28.13	44°44.80'	110°58.69'	9.2	2.1W	17	119	3	0.12
180224	21:42:21.10	44°44.58'	110°58.42'	7.4	1.2	14	101	3	0.11
180224	21:43:41.80	44°44.56'	110°58.48'	7.1	1.3W	15	100	3	0.11
180224	21:59:41.36	44°44.08'	110°58.25'	6.9	1.4W	16	102	4	0.10
180225	00:13:28.17	44°44.37'	110°58.74'	7.5	0.6	10	105	3	0.08
180225	02:20:59.29	44°44.96'	111°00.94'	7.5	0.8	14	83	1	0.09
180225	05:19:07.01	44°44.16'	111°00.47'	5.2	0.4	6	126	3	0.12
180225	09:39:47.82	44°45.36'	110°59.70'	8.8	0.7	14	126	1	0.08
180225	11:05:10.54	44°45.27'	110°59.63'	9.1	2.2W	22	105	1	0.12
180225	11:10:01.00	44°45.22'	110°59.09'	8.4	0.6	16	125	2	0.11
180225	11:12:32.88	44°45.32'	110°59.49'	8.7	0.8	17	125	1	0.11
180225	11:13:24.04	44°45.14'	110°59.24'	8.3	0.5	16	123	2	0.14
180225	12:09:21.79	44°45.42'	110°59.49'	9.4	0.9	18	127	1	0.10
180225	13:00:55.14	44°45.25'	110°59.47'	8.3	1.7W	20	125	1	0.10
180225	14:31:40.64	44°45.36'	110°59.47'	8.7	0.8	16	127	1	0.08
180225	14:41:54.24	44°45.71'	110°59.10'	8.8	1.9W	17	131	2	0.16
180225	14:42:49.39	44°45.35'	110°59.42'	9.0	1.8W	20	126	1	0.11
180225	14:50:05.69	44°45.50'	110°59.44'	8.9	1.6W	20	128	1	0.11
180225	14:52:26.94	44°45.53'	110°59.44'	9.4	1.8W	19	129	1	0.11
180225	14:55:13.00	44°45.44'	110°59.29'	9.1	0.8	13	127	1	0.10
180225	14:58:31.36	44°45.43'	110°59.46'	9.5	2.2W	20	127	1	0.11
180225	15:03:30.72	44°45.16'	110°59.29'	8.8	1.0	20	123	2	0.13

Table 2. Earthquakes in the Yellowstone Region: January 1–March 31, 2018

DATE	ORIGIN TIME	LATITUDE	LONGITUDE	DEPTH	MAG	NO	GAP	DMN	RMS
180225	15:10:21.40	44°45.21'	110°59.72'	6.3	3.0W	19	96	1	0.18
180225	15:14:30.50	44°45.25'	110°59.23'	9.1	2.2W	19	125	2	0.12
180225	15:17:26.90	44°45.43'	110°59.41'	8.5	1.8W	18	127	1	0.11
180225	15:19:51.33	44°45.01'	110°59.24'	8.1	0.6	11	123	2	0.10
180225	15:20:18.64	44°45.29'	110°59.44'	8.8	0.4	11	138	1	0.09
180225	15:21:40.78	44°44.75'	110°59.05'	7.2	0.2	8	151	2	0.07
180225	15:27:03.88	44°45.77'	110°59.50'	9.1	1.7W	10	158	1	0.07
180225	15:29:54.63	44°44.91'	110°58.78'	7.3	0.5	9	126	2	0.06
180225	16:56:07.13	44°45.21'	110°59.46'	9.0	2.1W	18	153	1	0.13
180225	17:10:17.87	44°45.03'	110°59.59'	7.9	0.8	12	115	1	0.08
180225	17:15:35.91	44°45.18'	110°59.57'	8.1	0.9	15	126	1	0.11
180225	20:22:14.87	44°44.21'	110°58.42'	7.9	1.4	17	91	4	0.16
180225	20:28:06.59	44°44.18'	110°58.61'	7.9	1.4	18	88	3	0.14
180225	20:50:09.10	44°44.26'	110°58.49'	7.3	1.1	16	91	3	0.10
180225	20:52:03.51	44°44.23'	110°58.81'	8.0	0.9	14	85	3	0.13
180225	20:52:45.14	44°44.19'	110°58.42'	7.5	1.7W	16	90	4	0.14
180225	21:15:17.52	44°44.32'	110°58.45'	7.3	1.2	17	93	3	0.14
180225	21:16:48.60	44°44.91'	110°58.98'	8.2	1.8W	19	105	2	0.15
180225	22:05:43.52	44°44.19'	110°58.58'	7.9	1.9W	19	88	3	0.16
180225	22:31:30.72	44°44.32'	110°58.65'	6.9	0.9	13	90	3	0.12
180225	23:06:39.38	44°44.22'	110°58.65'	8.1	1.6W	16	88	3	0.14
180225	23:26:12.89	44°45.32'	110°59.60'	9.6	1.2	16	114	1	0.13
180226	03:58:14.73	44°44.93'	110°59.04'	7.8	1.2	16	105	2	0.12
180226	07:05:57.76	44°41.53'	110°26.80'	6.8	1.6W	10	219	6	0.14
180226	08:10:13.66	44°37.02'	110°40.43'	6.2	1.0	9	119	3	0.14
180226	08:10:39.13	44°44.10'	110°58.44'	5.3	1.2	15	101	4	0.09
180226	09:56:49.84	44°22.61'	110°30.23'	4.7	1.5W	8	105	6	0.13
180226	12:26:45.66	44°22.52'	110°33.75'	4.2	1.4W	10	82	2	0.13
180226	17:03:34.50	44°20.84'	110°26.65'	11.7	1.8W	16	121	11	0.16
180226	18:35:04.51	44°21.29'	110°27.28'	8.0	0.5	11	139	11	0.10
180228	06:10:24.64	44°28.26'	110°43.35'	2.6	0.7	8	103	9	0.13
180301	17:28:04.40	44°46.71'	111°00.99'	8.1	1.9W	18	133	2	0.13
180302	00:17:14.44	44°44.25'	111°00.39'	6.0	0.7	18	53	2	0.13
180302	00:17:29.03	44°44.26'	111°00.45'	6.2	0.7	18	54	2	0.13
180302	00:24:55.97	44°44.24'	111°00.75'	7.4	1.8W	21	59	2	0.14
180303	17:22:59.33	44°47.43'	110°59.30'	7.3	0.5	21	157	4	0.16
180304	09:03:31.65	44°46.55'	111°01.34'	7.9	1.0	21	115	2	0.15
180305	00:01:11.22	44°39.05'	110°26.14'	3.9	1.8W	13	133	10	0.07
180305	04:58:20.08	44°26.33'	110°59.73'	4.3*	0.7	9	150	13	0.07
180305	12:51:16.03	44°35.96'	110°22.93'	4.4	0.7	14	173	4	0.09
180305	17:56:30.69	44°44.44'	111°00.94'	8.2	0.6	16	91	2	0.09
180307	03:05:08.09	44°34.73'	110°45.43'	7.5	0.8	12	98	9	0.10
180307	03:25:51.07	44°34.85'	110°45.47'	7.8	0.7	10	97	8	0.08
180308	10:49:05.18	44°44.08'	111°00.73'	8.2	1.0	17	56	3	0.12
180310	07:26:35.22	44°43.91'	111°00.72'	7.1	0.4	16	56	3	0.12

Table 2. Earthquakes in the Yellowstone Region: January 1–March 31, 2018

DATE	ORIGIN TIME	LATITUDE	LONGITUDE	DEPTH	MAG	NO	GAP	DMN	RMS
180310	12:40:24.47	44°44.08'	111°00.67'	7.2	0.6	15	56	3	0.12
180311	11:16:22.97	44°34.57'	110°45.89'	10.6	0.8W	12	113	8	0.16
180311	11:16:32.89	44°34.79'	110°44.84'	2.6	0.9	11	113	9	0.26
180311	11:29:31.73	44°33.94'	110°45.23'	2.5	0.8W	6	145	10	0.08
180311	11:34:15.57	44°34.89'	110°45.05'	7.8	0.7	11	93	9	0.12
180311	11:35:32.30	44°34.58'	110°44.77'	7.3	1.8W	22	69	9	0.19
180311	11:39:50.66	44°34.35'	110°44.73'	6.5	1.1W	13	94	9	0.06
180311	11:40:15.15	44°34.42'	110°42.97'	2.3	0.8W	7	80	7	0.36
180311	11:44:40.34	44°34.71'	110°45.06'	6.9	0.8W	14	95	9	0.14
180311	12:07:05.89	44°34.84'	110°44.92'	6.4	1.0W	13	93	9	0.16
180311	12:09:11.91	44°34.28'	110°46.31'	8.7	1.2	9	111	8	0.09
180311	12:10:15.59	44°34.24'	110°44.42'	3.7	0.9	7	147	9	0.11
180311	12:16:06.01	44°36.52'	110°44.59'	5.1	1.4W	10	82	8	0.07
180311	12:17:04.17	44°34.66'	110°44.27'	7.7	1.1W	11	143	8	0.15
180311	12:19:26.09	44°35.04'	110°44.79'	7.6	0.8W	18	90	9	0.20
180311	12:19:45.19	44°34.68'	110°46.06'	11.2	1.0W	8	104	8	0.14
180311	12:22:48.31	44°34.79'	110°44.49'	4.3	1.2W	15	68	8	0.16
180311	12:23:48.23	44°34.50'	110°44.60'	5.9	1.5W	18	69	9	0.14
180311	12:27:36.04	44°34.84'	110°44.03'	5.4	0.2	8	141	8	0.12
180311	12:27:41.30	44°34.58'	110°44.41'	5.3	1.1W	10	142	8	0.12
180311	12:52:48.05	44°27.51'	110°42.36'	11.1	1.1	6	249	10	0.33
180311	12:55:04.23	44°34.81'	110°44.15'	7.8	1.2	6	141	8	0.15
180311	12:56:41.28	44°34.66'	110°44.42'	6.8	1.3W	12	90	8	0.12
180311	13:47:49.67	44°34.99'	110°44.21'	4.0	1.0W	7	138	8	0.20
180311	13:52:03.14	44°34.15'	110°44.92'	4.4	0.9W	9	144	9	0.13
180311	18:18:03.92	44°34.73'	110°44.61'	5.3	0.2	8	139	8	0.14
180311	18:23:04.06	44°34.59'	110°44.23'	5.4	0.8W	10	89	8	0.13
180311	18:23:14.89	44°34.55'	110°44.11'	6.3	0.7	8	146	8	0.15
180311	18:23:25.23	44°34.51'	110°44.78'	5.6	0.3	8	141	9	0.14
180313	00:26:58.02	44°44.31'	110°47.49'	5.4	0.8	9	145	7	0.14
180313	00:30:57.10	44°43.91'	110°47.59'	6.2	0.9	19	84	7	0.19
180313	00:32:20.90	44°43.96'	110°47.62'	5.9	0.5	17	84	7	0.20
180313	00:32:29.02	44°43.52'	110°48.15'	2.5	0.4	9	134	8	0.16
180313	00:50:02.62	44°44.06'	110°47.51'	5.7	0.8	16	86	7	0.17
180313	01:03:20.61	44°44.22'	110°47.33'	7.7	1.6W	22	84	7	0.19
180313	02:37:31.35	44°44.19'	110°57.00'	6.8	0.5	13	113	5	0.11
180313	07:35:15.45	44°44.51'	110°57.33'	6.7	0.2	11	122	4	0.09
180313	07:42:49.57	44°44.46'	110°57.43'	6.6	0.3	11	120	4	0.12
180313	08:08:46.18	44°38.84'	110°45.29'	7.1	0.2	9	95	8	0.12
180313	10:33:56.46	44°44.45'	110°57.24'	7.3	0.5	14	120	5	0.11
180313	14:42:03.00	44°44.11'	111°00.52'	6.6	0.3	13	60	3	0.13
180313	15:55:20.01	44°44.69'	110°57.16'	7.2	0.2	10	116	5	0.11
180313	16:51:46.56	44°44.77'	110°57.40'	8.1	0.6	18	109	4	0.14
180314	00:06:50.91	44°44.76'	111°08.42'	9.4	0.3	9	87	4	0.09
180314	06:13:53.30	44°49.76'	111°25.56'	12.9	0.7	12	132	0	0.07

Table 2. Earthquakes in the Yellowstone Region: January 1–March 31, 2018

DATE	ORIGIN TIME	LATITUDE	LONGITUDE	DEPTH	MAG	NO	GAP	DMN	RMS
180314	08:52:08.44	44°44.81'	110°57.39'	7.2	0.4	10	131	4	0.10
180314	09:59:29.00	44°47.76'	110°57.26'	7.2	1.9W	28	127	6	0.16
180314	14:30:01.34	44°44.57'	110°57.52'	7.2	1.4	25	108	4	0.15
180314	16:07:17.48	44°51.75'	111°28.81'	14.3	0.6	7	228	5	0.07
180314	21:48:40.78	44°37.89'	110°20.66'	5.3	1.5W	15	74	9	0.12
180315	03:36:00.91	44°20.03'	110°18.71'	8.8	0.9	17	191	7	0.20
180315	15:03:00.18	44°44.68'	110°57.90'	7.9	2.2W	27	102	4	0.15
180315	19:24:26.72	44°44.76'	110°57.90'	7.8	1.6W	19	101	4	0.12
180315	20:01:13.20	44°44.57'	110°57.81'	7.7	0.9	15	106	4	0.12
180316	04:28:10.06	44°47.80'	111°05.35'	7.4	0.9	16	142	1	0.11
180316	06:06:26.65	44°45.30'	110°58.21'	7.7	0.9	19	106	3	0.14
180316	06:38:10.99	44°37.72'	111°14.96'	9.5	0.5	15	116	9	0.14
180316	07:46:01.41	44°44.75'	110°57.96'	6.9	0.6	15	117	4	0.15
180316	14:50:03.98	44°44.28'	110°57.20'	7.4	0.3	10	115	5	0.10
180316	19:51:37.78	44°45.10'	110°57.47'	8.0	0.5	10	141	4	0.13
180316	21:53:52.02	44°44.77'	110°57.74'	7.1	1.1	18	109	4	0.13
180316	22:33:17.52	44°44.94'	110°58.27'	9.4	0.6	9	132	3	0.08
180317	21:27:01.19	44°44.80'	110°57.73'	7.2	0.9	15	102	4	0.13
180318	15:08:57.81	44°19.63'	110°18.69'	9.0	1.1	13	181	7	0.14
180318	23:30:39.27	44°44.92'	111°01.29'	10.6	2.2W	30	67	2	0.15
180319	04:57:42.24	44°20.37'	110°19.96'	6.4	1.0	14	163	7	0.07
180320	09:39:31.21	44°47.01'	111°03.70'	8.6	0.1	11	140	4	0.09
180320	12:15:02.48	44°45.57'	111°11.01'	16.5	0.3	9	133	1	0.05
180320	12:32:02.72	44°47.72'	110°13.62'	7.1	1.5W	6	132	8	0.05
180320	12:45:51.03	44°46.65'	110°14.46'	2.1	1.1	7	226	8	0.09
180320	12:46:42.79	44°46.64'	110°14.33'	8.8	1.5	7	206	8	0.18
180322	01:27:12.17	44°09.95'	110°17.77'	9.2*	2.0W	20	200	21	0.19
180322	09:18:00.22	44°20.07'	110°19.15'	8.7	1.0	18	185	7	0.15
180323	11:59:21.12	44°44.58'	110°57.26'	8.4	0.6	17	100	4	0.15
180323	12:20:21.79	44°05.83'	110°28.35'	13.4	0.6	8	168	18	0.11
180324	12:50:06.06	44°44.53'	111°00.43'	5.8	0.4	17	70	2	0.14
180326	05:37:58.56	44°34.18'	110°44.71'	5.2	0.8W	14	95	9	0.18
180326	11:36:26.61	44°40.53'	110°00.58'	14.4	1.3	10	168	9	0.25
180327	06:45:40.51	44°20.93'	110°20.49'	5.3	0.8	17	182	7	0.13
180327	12:17:40.30	44°25.38'	110°35.66'	3.1	1.5W	17	52	2	0.16
180329	09:04:49.63	44°46.23'	111°14.64'	7.9	0.4	9	140	4	0.06
180329	13:39:48.96	44°03.83'	110°36.68'	8.9	0.2	12	144	7	0.11
180330	08:23:59.44	44°19.90'	110°32.64'	6.2	1.5W	19	99	6	0.12

number of earthquakes = 983

* indicates poor depth control

W indicates Wood-Anderson data used for magnitude calculation

Table 3
UNIVERSITY OF UTAH YELLOWSTONE SEISMIC NETWORK
Operating Seismograph Stations
March 31, 2018

UURSN	Location	SEED	SEED	No. of	Network	Latitude	Longitude	Elevation	Sensor	Digitizer	Telemetry	Sponsor
Code		Station	Channel	Channels	Code			(meters)				
B206*	Canyon206bwy2008, Yellowstone, WY	B206	EH[ZEN]	3	PB	44° 46.66'	110° 30.70'	2400	IEESE-S2	Q330	Digital	PBO
B207*	Madisn207bwy2007, Yellowstone, WY	B207	EH[ZEN]	3	PB	44° 37.14'	110° 50.91'	2182	IEESE-S2	Q330	Digital	PBO
B208*	Lakejn208bwy2008, Yellowstone, WY	B208	EH[ZEN]	3	PB	44° 33.61'	110° 24.09'	2406	IEESE-S2	Q330	Digital	PBO
B944*	Grantt944bwy2008, Yellowstone, WY	B944	EH[ZEN]	3	PB	44° 23.38'	110° 32.63'	2365	IEESE-S2	Q330	Digital	PBO
B945*	Pantr944swy2008, Yellowstone, WY	B945	EH[ZEN]	3	PB	44° 53.64'	110° 44.65'	2249	IEESE-S2	Q330	Digital	PBO
B950*	Norris950bwy2013, Yellowstone, WY	B950	EH[ZEN]	3	PB	44° 42.77'	110° 40.71'	2328	IEESE-S2	Q330	Digital	PBO
FLWY*	Flagg Ranch, WY	FLWY	BH[ZEN]	3	IW	44° 04.96'	110° 41.96'	2078	3ESP	RT-130	Digital	ANSS
H17A*	Grant Junction, Yellowstone, WY	H17A	BH[ZEN]	3	TA	44° 24.00'	110° 34.80'	2400	STS-2	Q330	Digital	NSF
IMW	Indian Meadows, WY	IMW	BH[ZEN]	3	IW	43° 53.58'	110° 56.58'	2670	3ESP	RT-130	Digital	ANSS
LKW*	Lake, WY	LKWY	BH[ZEN]	3	US	44° 33.91'	110° 24.00'	2424	STS-2	Q330	Digital	USGS
LOHW*	National Elk Refuge, WY	LOHW	BH[ZEN]	3	IW	43° 36.76'	110° 36.30'	2245	3ESP	RT-130	Digital	ANSS
MCID	Moose Creek, ID	MCID	EHZ	1	WY	44° 11.45'	111° 11.03'	2137	L4C	PSN	Analog	USGS
MOOW*	Moose Ponds, WY	MOOW	BH[ZEN]	3	IW	43° 44.92'	110° 44.69'	2128	3ESP	RT-130	Digital	ANSS
QLMZ*	Earthquake Lake, MT	QLMT	EHZ	1	MB	44° 49.84'	111° 25.80'	2064	L4C	-	Analog	MBMT
REDW*	Red-Top Meadows, WY	REDW	BH[ZEN]	3	IW	43° 21.74'	110° 51.18'	2322	3ESP	RT-130	Digital	ANSS
SNOW*	Snow King Mountain, WY	SNOW	BH[ZEN]	3	IW	43° 27.75'	110° 45.31'	2390	3ESP	RT-130	Digital	ANSS
TPAW*	Teton Pass, WY	TPAW	BH[ZEN]	3	IW	43° 29.41'	110° 57.04'	2512	3ESP	RT-130	Digital	ANSS
TPMZ*	Teepe Creek, MT	TPMT	EHZ	1	MB	44° 43.79'	111° 39.94'	2518	L4C	-	Analog	MBMT
YDC	Denny Creek, MT	YDC	EHZ	1	WY	44° 42.51'	111° 14.60'	2025	L4C	PSN	Analog	USGS
YEE	East Entrance (YNP), WY	YEE	HH[ZEN]	3	WY	44° 29.12'	109° 53.81'	2270	Compact	Taurus	Digital	USGS
YFT	Old Faithful (YNP), WY	YFT	HH[ZEN]	3	WY	44° 27.05'	110° 50.24'	2292	Compact	Taurus	Digital	USGS
			EN[ZEN]	3					Titan			
YGC	Grayling Creek, MT	YGC	EHZ	1	WY	44° 47.77'	111° 06.45'	2075	L4C	PSN	Analog	USGS
YHB	Horse Butte, MT	YHB	EHZ	1	WY	44° 45.07'	111° 11.71'	2157	L4C	ANSS-130	Digital	USGS
			HH[ZEN]	3					40T			
			EN[ZEN]	3					Titan			
YHH	Holmes Hill (YNP), WY	YHH	EHZ	1	WY	44° 47.30'	110° 51.03'	2717	S13	PSN	Analog	USGS
			HH[ZEN]	3					Trillium 120			
			EN[ZEN]	3					Titan			

UURSN	Location	SEED	SEED	No. of	Network	Latitude	Longitude	Elevation	Sensor	Digitizer	Telemetry	Sponsor
Code		Station	Channel	Channels	Code			(meters)				
YHL	Hebgen Lake, MT	YHL	HH[ZEN]	3	WY	44° 51.05'	111° 10.98'	2691	Trillium 120	Q330	Digital	USGS
			EN[ZEN]	3					Titan			
YHR	Hawk's Rest, WY	YHR	HH[ZEN]	3	WY	44° 06.36'	110° 04.90'	2976	Trillium 120	Q330	Digital	USGS
YJCZ	Joseph's Coat (YNP), WY	YJC	EH[ZEN]	3	WY	44° 45.33'	110° 20.95'	2684	S13	PSN	Analog	USGS
YLAZ	Lake Butte (YNP), WY	YLA	EHZ	1	WY	44° 30.76'	110° 16.12'	2580	L4C	PSN	Analog	USGS
YLT	Little Thumb Creek (YNP), WY	YLT	EHZ	1	WY	44° 26.25'	110° 35.28'	2439	L4C	PSN	Analog	USGS
YMC	Maple Creek (YNP), WY	YMC	EH[ZEN]	3	WY	44° 45.53'	111° 00.41'	2073	S13	PSN	Analog	USGS
YML	Mary Lake (YNP), WY	YML	EH[ZEN]	3	WY	44° 36.20'	110° 38.63'	2653	L4C	PSN	Analog	USGS
YMP	Mirror Plateau (YNP), WY	YMP	EHZ	1	WY	44° 44.38'	110° 09.40'	2774	S13	PSN	Analog	USGS
			HH[ZEN]	3					Trillium 120			
			EN[ZEN]	3					Titan			
YMR	Madison River (YNP), WY	YMR	HH[ZEN]	3	WY	44° 40.12'	110° 57.90'	2149	Trillium 120	Q330	Digital	USGS
			EN[ZEN]	3					Titan			
YMS	Mount Sheridan (YNP), WY	YMS	EHZ	1	WY	44° 15.84'	110° 31.67'	3106	L4C	PSN	Analog	USGS
YMV	Mammoth Vault (YNP), WY	YMV	EHZ	1	WY	44° 58.42'	110° 41.33'	1829	L4C	PSN	Analog	USGS
YNE	Northeast Entrance (YNP), WY	YNE	HH[ZEN]	3	WY	45° 00.46'	110° 00.48'	2343	Compact	ANSS-130	Digital	USGS
YNM	Norris Museum (YNP), WY	YNM	HH[ZEN]	3	WY	44° 43.59'	110° 42.22'	2311	Trillium 240	Q330	Digital	USGS
YNR	Norris Junction (YNP), WY	YNR	HH[ZEN]	3	WY	44° 42.93'	110° 40.75'	2336	Trillium 120	Q330	Digital	USGS
			EN[ZEN]	3					Titan			
YPC	Pelican Cone (YNP), WY	YPC	EHZ	1	WY	44° 38.88'	110° 11.55'	2932	L4C	PSN	Analog	USGS
YPK	Parker Peak (YNP), WY	YPK	EH[ZEN]	3	WY	44° 43.91'	109° 55.32'	2897	L4C	PSN	Analog	USGS
YPM	Purple Mountain (YNP), WY	YPM	EHZ	1	WY	44° 39.43'	110° 52.12'	2582	L4C	PSN	Analog	USGS
YPP	Pitchstone Plateau (YNP), WY	YPP	EHZ	1	WY	44° 16.26'	110° 48.27'	2707	S13	PSN	Analog	USGS
			HH[ZEN]	3					Trillium 120			
			EN[ZEN]	3					Titan			
YSB	Soda Butte (YNP), WY	YSB	EHZ	1	WY	44° 53.04'	110° 09.06'	2072	L4C	PSN	Analog	USGS
YTP	The Promontory (YNP), WY	YTP	EHZ	1	WY	44° 23.51'	110° 17.10'	2384	L4	PSN	Analog	USGS
			HH[ZEN]	3					Trillium 120			
			EN[ZEN]	3					Titan			
YUF	Upper Falls (YNP), WY	YUF	HH[ZEN]	3	WY	44° 42.76'	110° 30.71'	2394	Compact	ANSS-130	Digital	USGS
			EN[ZEN]	3					Titan			
YWB	West Boundary (YNP), WY	YWB	EHZ	1	WY	44° 36.35'	111° 06.05'	2310	L4C	PSN	Analog	USGS

* Station operated by another agency and recorded as part of the Yellowstone Seismic Network
Network Statistics: 147 data channels from 46 stations were being recorded at the end of this report period

EXPLANATION OF TABLE

UURSN Code: Station code formerly used in routine processing. Owing to software limitations, the station code may not be the same code used by the original operator. For multi-component stations, the vertical, east-west, and north-south high gain (low gain) components are identified by an appended Z(V), E(L), and N(M), respectively, in UUSS phase files.

Location: General description of station location. YNP = Yellowstone National Park.

SEED Station: The SEED (Standard for the Exchange of Earthquake Data) station code used by the original operator.

SEED Channel: The SEED format uses three letters to name seismic channels. See <<http://www.iris.edu/manuals/SEEDManual_V2.4.pdf>> for information about the SEED channel naming convention. Relevant sections are reproduced below. In the SEED convention, each letter describes one aspect of the instrumentation and its digitization. The first letter specifies the general sampling rate and the response band of the instrument. Band codes used in this table include:

Band Code	Band Type	Sample Rate	Corner Period
E	Extremely short period	≥ 80 Hertz	< 10 seconds
H	High broadband	≥ 80 Hertz	≥ 10 seconds
B	Broadband	≥ 10 to < 80 Hertz	≥ 10 seconds
S	Short period	≥ 10 to < 80 Hertz	< 10 seconds

The second letter specifies the family to which the sensor belongs. Sensor families used in this table are:

Instrument Code	Description
H	High gain seismometer
L	Low gain seismometer
N	Accelerometer

The third letter specifies the physical configuration of the members of a multiple axis instrument package. Channel orientations used in this table are:

Z E N Traditional (Vertical, East-West, North-South)

Number of Channels: Total number of waveform channels recorded.

Network Code: The FDSN (Federation of Digital Seismographic Networks) registered network code. See <<http://www.iris.edu/dms/nodes/dmc/services/network_codes>> for information about registered seismograph network codes. Network codes referenced in this table:

Network Code	Network name; Network operator or responsible organization
IE	Idaho National Laboratory Seismic Network
IU	IRIS/USGS Network; USGS Albuquerque Seismological Laboratory
IW	Intermountain West Network, U.S. Geological Survey

MB	Montana Regional Seismic Network; Montana Bureau of Mines and Geology
PB	Plate Boundary Observatory
UU	University of Utah Regional Network; University of Utah
US	US National Network; USGS National Earthquake Information Center
WY	Yellowstone Wyoming Seismic Network; University of Utah

Latitude, Longitude: Sensor location in degrees and decimal minutes; North latitude, West longitude.

Elevation: Sensor altitude in meters above sea level.

Sensor	Description
L4, L4C	Mark Products L4 or L4C short-period seismometer
S13, 18300	Geotech S13 or 18300 short-period seismometer
Ranger	Kinometrics Ranger short-period seismometer
40T	Guralp CMG-40T broadband seismometer
3T	Guralp CMG-3T broadband seismometer
3ESP	Guralp CMG-3ESP broadband seismometer
STS-2	Streckheisen STS-2 broadband seismometer
FBA23	Kinometrics FBA-23 accelerometer
EpiSensor	Kinometrics EpiSensor accelerometer
Applied Mems	Applied Mems accelerometer
PA-23	Geotech PA-23 accelerometer
Compact	Nanometrics Compact broadband seismometer
Trillium 120	Nanometrics Trillium 120 broadband seismometer
Trillium 240	Nanometrics Trillium 240 broadband seismometer
Titan	Nanometrics Titan accelerometer
Observer	Refraction Technology (REF TEK) Model 151 Observer broadband seismometer
IESE-S2	Institute of Earth Science and Engineering S-2 model borehole seismometer

Digitizer	Description
K2	Kinometrics Altus Series K2 (19-bit resolution field digitizer)
Etna	Kinometrics Altus Series Etna (18-bit resolution field digitizer)
72A-07	Refraction Technology (REF TEK) model 72A-07 (24-bit field digitizer)
72A-08	Refraction Technology (REF TEK) model 72A-08 (24-bit field digitizer)
ANSS-130	Refraction Technology (REF TEK) model 130-ANSS/02 (24-bit resolution field digitizer)
RT-130	Refraction Technology (REF TEK) model RT-130 (24-bit resolution field digitizer)
Q330	Quanterra, Inc Q330 digitizer (24-bit resolution field digitizer)
SMART-24	Geotech SMART-24 digitizer (24-bit resolution field digitizer)
PSN	PSN-ADC-SERIAL version III (16-bit resolution field digitizer)
Basalt	Kinometrics Basalt (24-bit resolution field digitizer)
Taurus	Nanometrics Taurus (24-bit resolution field digitizer)

Telemetry	Description
Analog	Data transmission is analog along part of the transmission pathway

Digital	Data are converted to digital form at the station site
None	On-site recording system

Sponsor (or Operator for stations marked by * in preceding columns)

USGS	U.S. Geological Survey
Utah	State of Utah
ANSS	Advanced National Seismic System
INL	Idaho National Laboratory
MBMT	Montana Bureau of Mines and Geology
PBO	Plate Boundary Observatory
NSF	National Science Foundation

Network Changes During January 1–March 31, 2018

None