

EARTHQUAKE ACTIVITY IN THE YELLOWSTONE REGION

Preliminary Epicenters

July 1 – September 30, 2017

Prepared by the University of Utah Seismograph Stations and funded by
the U.S. Geological Survey (Cooperative Agreement No. G16AC00029)

December 20, 2017

Foreword and Data Explanation

This report contains an epicenter map (Figure 1) and listings of earthquakes (Tables 1 and 2) detected and located in the Yellowstone region (lat. 44° 00' – 45° 10' N, long. 109° 45' – 111° 30' W). The computer program HYPOINVERSE-2000 (F. W. Klein, 2012, U.S. Geological Survey Open-File Report 02-171 revised) was used to process the earthquake data. This report also includes maps and a table of operating seismograph stations in the University of Utah's Yellowstone seismic network (Figure 2, Table 3).

The earthquake listing in Table 2 is estimated to be systematically complete above magnitude 1.5 within Yellowstone. *These data are preliminary—both the locations and magnitudes in this table are subject to revision.*

The following data are listed for each earthquake in Table 2:

- Date (yyymmdd) and origin time in Coordinated Universal Time (UTC). To convert to local time, subtract seven hours for Mountain Standard Time (MST) and six hours for Mountain Daylight Time (MDT). During the report period, local time was MDT.
- Earthquake location coordinates in degrees and minutes of north latitude and west longitude, and depth in kilometers below sea level. Note that prior to October 1, 2012 the earthquake depths in these quarterly reports were computed relative to a datum of 2000 m above sea level.
- "*" indicates poor depth resolution: no recording stations within 10 km or twice the depth.
- MAG, the computed Richter local magnitude (M_L) for each earthquake. "W" indicates that peak amplitude measurements from Wood-Anderson records were used. Otherwise, the estimate is calculated from signal durations and is more correctly identified as coda magnitude (M_C). The notation "--" indicates that a reliable magnitude estimate could not be made.
- NO, the number of P and S readings used in the solution.
- GAP, the largest azimuthal separation in degrees between recording stations used in the solution.
- DMN, the epicentral distance in kilometers to the closest station.
- RMS, the weighted root-mean-square of the travel-time residuals in seconds:

$$RMS = \left(\frac{\sum_i (W_i R_i)^2}{\sum_i (W_i)^2} \right)^{\frac{1}{2}}$$

where: R_i is the observed minus the computed arrival time for the i -th P or S reading, and W_i is the relative weight given to the i -th P or S arrival time (0.0 for no weight through 1.0 for full weight).

EARTHQUAKE ACTIVITY IN THE YELLOWSTONE REGION
July 1 – September 30, 2017

by J. Farrell, R. Burlacu, P. M. Roberson, J. M. Hale, J. Stanley, A. Parapuzha, and N. Forbes
with contributions by
K. D. Koper, R. B. Smith, J. C. Pechmann, and K. L. Pankow

University of Utah Seismograph Stations
115 South 1460 East, Room 107 FASB
Salt Lake City, UT 84112-0102
Tele: (801) 581-6274 FAX: (801) 585-5585
email: jamie.farrell@utah.edu
URL: <http://www.seis.utah.edu> (aka quake.utah.edu)

During the three-month period July 1 through September 30, 2017, the University of Utah Seismograph Stations (UUSS) located 1,675 earthquakes within the Yellowstone region (Figure 1). The total includes 8 earthquakes in the magnitude 3 range and 124 earthquakes in the magnitude 2 range. The largest event to occur during this period was a magnitude 3.6 earthquake on July 18th. Thirteen earthquakes were reported felt in the region during the report period (see Table 1, a cumulative tabulation of earthquakes that were felt in the Yellowstone region during 2017). Additional information on earthquakes within the Yellowstone region is available from the University of Utah Seismograph Stations.

Online Information

A complete copy of this report, including maps and the earthquake catalog, is available on the UUSS web site at <http://quake.utah.edu/earthquake-center/quarterly-seismicity-reports>.

Note: On October 1, 2012 UUSS began using the ANSS Quake Monitoring System (AQMS) software package for data acquisition and data processing. The primary effect on the data reported herein comes from computing the earthquake locations with a newer version of the computer program HYPOINVERSE-2000 (F. W. Klein, 2012, U.S. Geological Survey Open-File Report 02-171 revised) and a revised and expanded set of velocity models. As implemented at UUSS, this new version of the location program accounts for station elevation differences more accurately and reports focal depths relative to sea level instead of the 2000 m elevation datum used previously.

For earthquakes of magnitude 3 and larger in the Yellowstone region, the U. S. Geological Survey automatically posts a Community Internet Intensity Map (CIIM) on its "Did You Feel It?" web page at <http://earthquake.usgs.gov/earthquakes/dyfi/>. We encourage anyone who feels an earthquake to report their observations on this interactive web site; felt information is available by zip code on the CIIM site or can be obtained from UUSS directly.

Earthquakes of Magnitude 3.0 or Larger

M _L 3.4	July 16	11:21 MDT	9 mi NNE of West Yellowstone, MT
M _W 3.6	July 18	14:31 MDT	9 mi NNE of West Yellowstone, MT
M _L 3.1	August 01	07:16 MDT	10 mi NNE of West Yellowstone, MT
M _L 3.3	August 05	05:17 MDT	10 mi NNE of West Yellowstone, MT
M _L 3.0	August 10	08:41 MDT	9 mi NNE of West Yellowstone, MT
M _L 3.0	August 14	20:03 MDT	9 mi NNE of West Yellowstone, MT
M _L 3.3	August 20	21:00 MDT	11 mi N of West Yellowstone, MT
M _L 3.2	September 16	23:38 MDT	11 mi S of Old Faithful, YNP

Notable Swarm Seismicity

During the report period, there were six earthquake swarms in the Yellowstone region. For reporting purposes, we use the Mogi definition [Mogi, 1963] of a swarm and require each swarm to have ten or more earthquakes. Note that typically, around 50% of Yellowstone earthquakes occur as part of a seismic swarm [Farrell et al., 2009]. The July 1st swarm is a continuation of the swarm that began on June 12th and is the 2nd largest swarm ever recorded in Yellowstone.

- A. A swarm of 1,252 earthquakes ($-1.0 \leq M \leq 3.6$) occurred about 9 mi NNE of West Yellowstone, MT from July 1st – August 24th. ****
- B. A swarm of 21 earthquakes ($0.1 \leq M \leq 3.1$) occurred about 8 mi NNE of West Yellowstone, MT from August 1st – 7th.
- C. A swarm of 34 earthquakes ($0.2 \leq M \leq 2.7$) occurred about 9 mi NNE of Old Faithful, YNP from August 14th – 17th.
- D. A swarm of 22 earthquakes ($0.4 \leq M \leq 1.9$) occurred about 11 mi SSW of West Thumb, YNP from August 19th – 20th.
- E. A swarm of 104 earthquakes ($-0.6 \leq M \leq 2.8$) occurred about 9 mi NNE of West Yellowstone, MT from August 26th – September 9th.
- F. A swarm of 11 earthquakes ($0.0 \leq M \leq 1.8$) occurred about 19 mi E of West Yellowstone, MT on September 6th.

These swarms are labeled in Figure 1.

**** This swarm is a continuation of a swarm that began on June 12th, 2017.

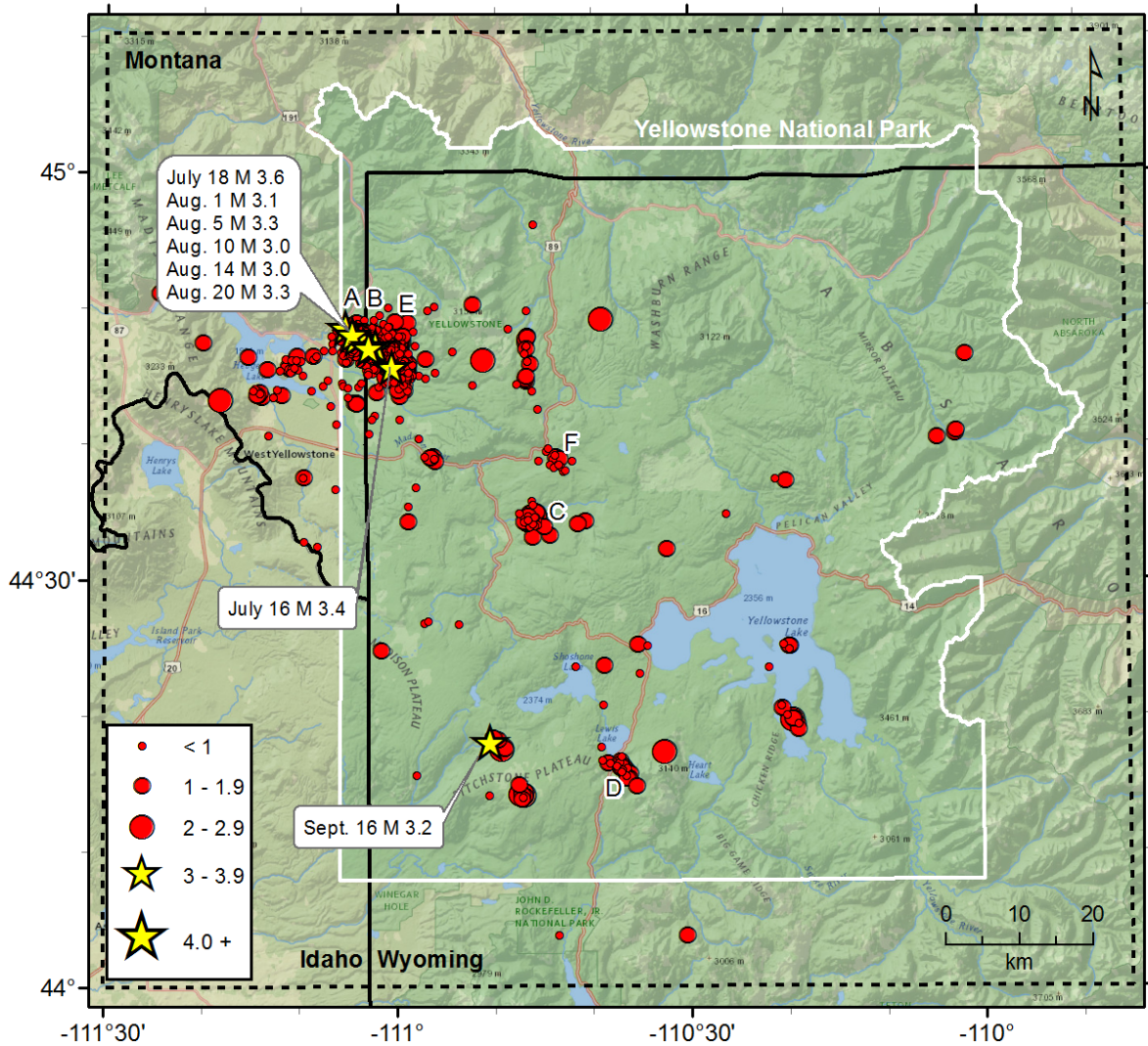


Figure 1. Epicenters of earthquakes located by the University of Utah Seismograph Stations, July 1, 2017 through September 30, 2017. Earthquake swarms (labeled A-F) are discussed in the text.

Table 1
EARTHQUAKES FELT IN THE YELLOWSTONE REGION
January 1, 2017 to September 30, 2017

Date	Time†	Felt Information‡	Latitude	Longitude	Magnitude§
January 20	09:37 MST 16:37 UTC	Yellowstone. Felt (II) at West Yellowstone, MT.	44° 48.07'	110° 59.06'	M _L 3.3
June 15 June 16	18:48 MDT 00:48 UTC	Yellowstone. Felt (IV) at West Yellowstone, MT.	44° 46.86'	111° 01.98'	M _w 4.4
June 15 June 16	19:03 MDT 01:03 UTC	Yellowstone. Felt (II) at West Yellowstone, MT.	44° 46.56'	111° 02.34'	M _L 3.1
June 15 June 16	19:46 MDT 01:46 UTC	Yellowstone. Felt (III) at West Yellowstone, MT.	44° 47.22'	111° 02.22'	M _L 2.9
June 16	07:17 MDT 13:17 UTC	Yellowstone. Felt (II) at West Yellowstone, MT.	44° 47.28'	111° 01.20'	M _L 2.6
June 18 June 19	21:12 MDT 03:12 UTC	Yellowstone. Felt (IV) at West Yellowstone, MT.	44° 47.16'	111° 01.50'	M _L 3.0
June 26	16:35 MDT 22:35 UTC	Yellowstone. Felt (III) at West Yellowstone, MT.	44° 48.24'	111° 01.26'	M _L 2.7
July 16	10:30 MDT 16:30 UTC	Yellowstone. Felt (II) at West Yellowstone, MT.	44° 45.44'	111° 00.82'	M _L 2.9
July 16	11:21 MDT 17:21 UTC	Yellowstone. Felt (III) at West Yellowstone, MT.	44° 45.44'	111° 00.82'	M _L 3.4
July 16	11:28 MDT 17:28 UTC	Yellowstone. Felt (II) at West Yellowstone, MT.	44° 45.59'	111° 00.67'	M _L 2.8
July 18	14:31 MDT 20:31 UTC	Yellowstone. Felt (IV) at West Yellowstone, MT.	44° 46.56'	111° 02.26'	M _w 3.6
August 01	07:16 MDT 13:16 UTC	Yellowstone. Felt (IV) at West Yellowstone, MT.	44° 47.68'	111° 04.75'	M _L 3.1
August 01	09:15 MDT 15:15 UTC	Yellowstone. Felt (III) at West Yellowstone, MT.	44° 47.83'	111° 04.60'	M _L 2.8
August 02 August 03	18:18 MDT 00:18 UTC	Yellowstone. Felt (III) at West Yellowstone, MT.	44° 47.98'	111° 03.85'	M _L 2.8
August 03	12:38 MDT 18:38 UTC	Yellowstone. Felt (III) at West Yellowstone, MT.	44° 47.45'	111° 04.37'	M _L 2.8

Table 1
EARTHQUAKES FELT IN THE YELLOWSTONE REGION
January 1, 2017 to September 30, 2017

August 05	05:17 MDT 11:17 UTC	Yellowstone. Felt (V) at West Yellowstone, MT.	44° 47.23'	111° 04.30'	M _L 3.3
August 14 August 15	20:03 MDT 02:03 UTC	Yellowstone. Felt (III) at West Yellowstone, MT.	44° 46.93'	111° 03.09'	M _L 3.0
August 20 August 21	21:00 MDT 03:00 UTC	Yellowstone. Felt (III) at West Yellowstone, MT.	44° 47.83'	111° 05.36'	M _L 3.3
September 16 September 17	23:38 MDT 05:38 UTC	Yellowstone. Felt (III) at Yellowstone National Park.	44° 18.89'	110° 50.21'	M _L 3.2
September 26	00:31 MDT 06:31 UTC	Yellowstone. Felt (III) at Yellowstone National Park.	44° 48.17'	110° 39.38'	M _L 2.9

† Times are listed both as Local Time—Mountain Standard Time (MST) or Mountain Daylight Time (MDT)—and as Coordinated Universal Time (UTC).

? Indicates on-line reports that appear questionable given the distance from the source

‡ *CIIM* indicates the availability of a Community Internet Intensity Map

(<http://earthquake.usgs.gov/earthquakes/dyfi>), compiled by the U.S. Geological Survey (USGS); *ShakeMap* indicates the availability of computer-generated maps of ground-shaking (<http://quake.utah.edu>), produced by the University of Utah Seismograph Stations (UUSS). Roman numerals correspond to the Modified Mercalli intensity scale. Unless otherwise indicated, felt information is from the USGS (1) CIIM reports and/or (2) PDE Monthly (or) Weekly Listing Files (<http://earthquake.usgs.gov/data/pde.php>).

§ Richter local magnitude (M_L) or coda magnitude (M_c) determined by UUSS. If labeled “NEIC,” data are from the National Earthquake Information Center of the USGS.

Yellowstone Seismic Network September 30, 2017

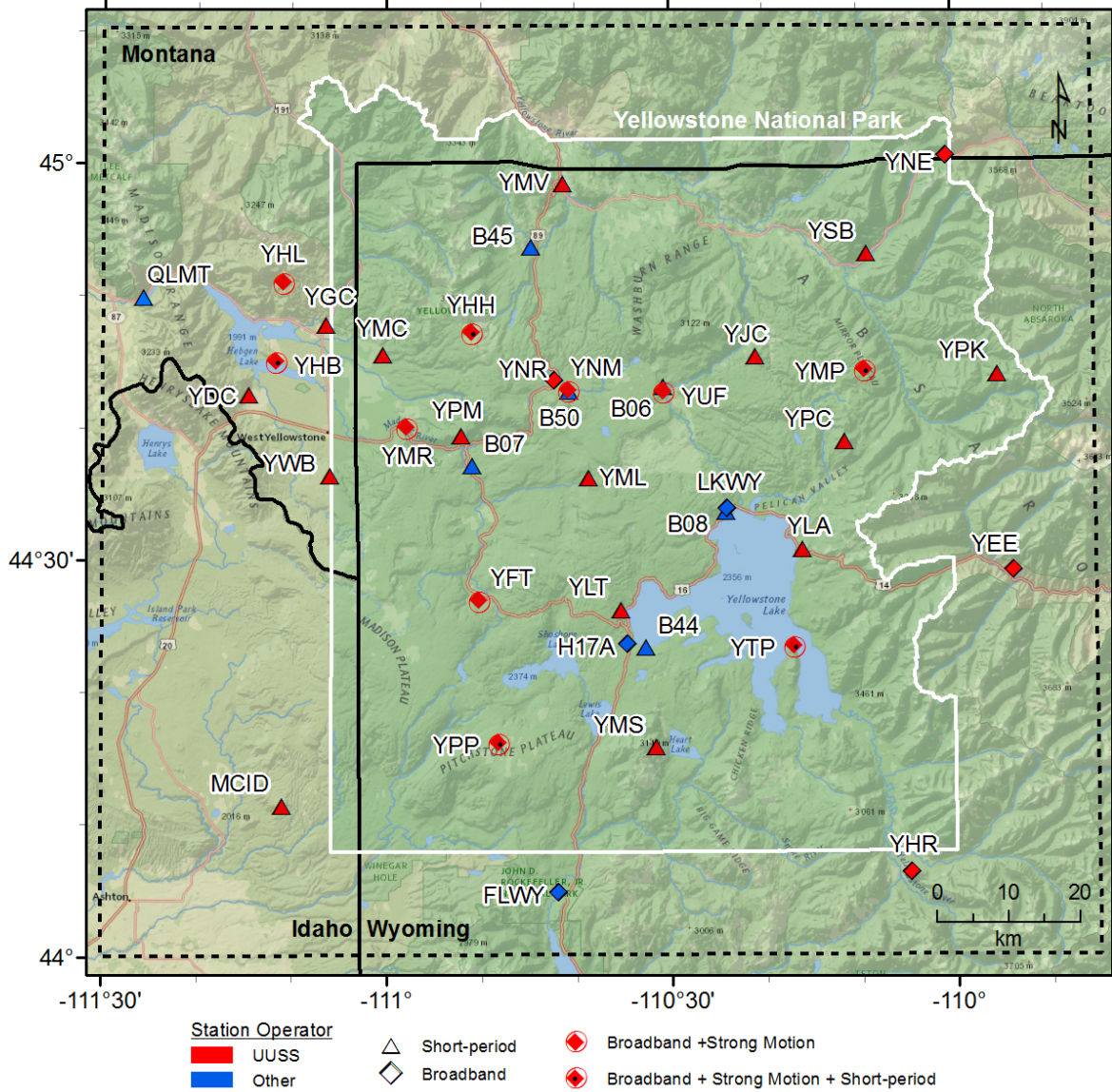


Figure 2. Seismograph Stations of the Yellowstone Seismic Network as of September 30, 2017

Table 2. Earthquakes in the Yellowstone Region: July 1–September 30, 2017

DATE	ORIGIN TIME	LATITUDE	LONGITUDE	DEPTH	MAG	NO	GAP	DMN	RMS
170701	01:06:15.73	44°47.13'	111°04.46'	6.1	0.7W	9	153	3	0.08
170701	03:49:10.75	44°46.71'	111°00.82'	7.7	1.3W	18	162	2	0.18
170701	05:12:42.25	44°47.30'	111°01.32'	7.8	1.0W	20	116	3	0.17
170701	06:42:11.43	44°46.41'	111°00.75'	4.4	0.7	11	174	2	0.10
170701	07:51:46.31	44°46.73'	111°02.59'	8.0	1.4W	19	140	4	0.15
170702	02:02:04.47	44°47.77'	111°00.52'	5.0	0.9	20	159	4	0.16
170702	05:25:31.66	44°46.92'	111°01.53'	5.1	1.5W	20	145	3	0.15
170702	05:33:21.79	44°45.06'	110°59.75'	4.6	1.0W	18	111	1	0.17
170702	05:48:04.81	44°46.29'	111°02.38'	8.3	0.8W	15	134	3	0.11
170702	06:30:16.01	44°47.39'	111°02.20'	7.4	0.4	12	200	4	0.17
170702	07:10:02.04	44°46.93'	111°01.72'	8.0	2.4W	24	144	3	0.15
170702	07:10:58.24	44°46.80'	111°01.58'	6.6	0.9	21	143	3	0.17
170702	07:11:20.82	44°46.69'	111°01.70'	7.3	2.1W	25	141	3	0.16
170702	07:14:45.03	44°46.82'	111°01.63'	6.9	0.6	15	143	3	0.17
170702	07:18:48.89	44°46.40'	111°01.48'	6.9	0.8	20	138	2	0.13
170702	07:28:02.32	44°47.64'	111°02.12'	8.0	1.4W	20	153	4	0.13
170702	07:37:22.64	44°46.93'	111°01.89'	8.0	1.4W	18	144	3	0.15
170702	09:23:20.19	44°46.46'	111°02.66'	7.3	0.3	11	154	3	0.17
170702	09:31:11.18	44°46.72'	111°02.24'	7.8	0.4	13	140	3	0.13
170702	10:08:20.26	44°46.84'	111°01.99'	8.0	0.5	13	142	3	0.16
170702	10:58:13.78	44°46.15'	111°00.46'	7.1	0.0	11	237	1	0.14
170702	11:31:39.46	44°46.83'	111°02.64'	8.7	1.6W	22	140	4	0.15
170702	11:32:47.60	44°46.72'	111°02.39'	7.9	1.2W	20	157	3	0.16
170702	11:41:53.15	44°46.24'	111°01.53'	7.7	0.2	10	147	2	0.14
170702	11:42:27.41	44°45.58'	111°02.46'	7.3	0.0	8	128	3	0.04
170702	11:52:38.43	44°46.81'	111°02.57'	8.4	1.6W	22	140	4	0.14
170702	11:54:42.81	44°46.57'	111°02.33'	7.4	0.7	17	137	3	0.16
170702	12:29:32.24	44°46.43'	111°02.43'	7.6	0.5	17	135	3	0.16
170702	13:32:17.83	44°47.28'	111°02.72'	7.5	1.0W	18	146	4	0.15
170702	14:52:55.92	44°47.31'	111°01.69'	9.3	0.7W	10	166	4	0.10
170702	15:27:05.15	44°48.12'	111°03.79'	6.7	1.0W	17	155	3	0.13
170702	20:52:04.23	44°46.66'	111°02.14'	8.2	0.8	17	140	3	0.13
170703	01:02:14.42	44°46.70'	111°02.26'	8.8	2.0W	20	139	3	0.15
170703	01:12:01.03	44°46.33'	111°02.00'	8.7	0.9W	11	135	3	0.14
170703	02:29:36.85	44°40.47'	110°57.80'	4.8	0.3	9	142	1	0.08
170703	02:59:32.58	44°47.23'	111°01.00'	8.2	0.5	12	150	3	0.19
170703	03:04:27.10	44°48.96'	110°59.06'	4.6	1.1W	15	182	7	0.15
170703	03:58:15.45	44°47.03'	111°01.02'	7.8	1.6W	20	147	3	0.15
170703	04:54:55.55	44°47.96'	111°02.64'	7.6	1.0W	15	156	5	0.14
170703	08:20:33.40	44°46.65'	111°01.84'	7.9	0.9W	17	140	3	0.16
170703	08:59:50.30	44°46.81'	111°01.14'	7.9	0.8W	16	144	3	0.15
170703	09:55:10.18	44°47.58'	111°03.91'	6.5	0.5	15	146	3	0.13
170703	11:07:21.17	44°47.74'	110°46.88'	6.2	1.6W	16	190	6	0.10
170703	11:07:48.48	44°47.08'	110°46.78'	4.1	1.2W	18	185	6	0.18
170703	11:09:58.18	44°47.87'	110°46.68'	7.0	1.2	20	191	6	0.14

Table 2. Earthquakes in the Yellowstone Region: July 1–September 30, 2017

DATE	ORIGIN TIME	LATITUDE	LONGITUDE	DEPTH	MAG	NO	GAP	DMN	RMS
170703	11:09:58.18	44°47.99'	110°46.69'	6.6	1.5W	18	192	6	0.12
170703	11:17:35.14	44°47.19'	110°46.86'	4.0	0.9	18	186	6	0.18
170703	11:54:10.99	44°46.51'	111°01.28'	8.3	0.9W	11	159	2	0.11
170703	12:57:35.16	44°46.71'	110°46.96'	3.0	0.6	11	208	5	0.15
170703	14:26:18.84	44°47.29'	111°02.19'	7.7	0.3	11	164	4	0.18
170703	19:08:48.29	44°45.13'	110°59.72'	4.6	0.9	10	117	1	0.12
170703	20:50:05.17	44°46.96'	111°02.19'	8.8	1.0W	14	143	4	0.14
170704	00:14:55.06	44°47.02'	111°01.04'	8.9	0.8	17	147	3	0.17
170704	00:15:04.58	44°46.53'	111°01.17'	6.5	0.2	12	140	2	0.16
170704	09:33:53.77	44°03.92'	110°43.51'	6.9	0.7	13	136	3	0.10
170704	10:08:43.23	44°46.76'	111°01.08'	7.7	-0.1	15	143	2	0.17
170704	13:15:32.73	44°47.14'	111°01.09'	7.8	0.5	11	148	3	0.14
170704	20:04:21.97	44°46.86'	111°01.00'	7.8	1.4W	19	145	3	0.16
170704	20:07:39.67	44°46.11'	111°00.54'	7.2	0.7	12	237	1	0.16
170705	02:20:19.54	44°47.25'	111°00.66'	6.5	0.9W	13	151	3	0.21
170705	03:01:10.51	44°47.01'	111°01.17'	7.1	1.4W	17	146	3	0.16
170705	03:36:29.46	44°47.58'	110°46.83'	6.6	1.8W	16	189	6	0.20
170705	04:20:43.32	44°46.64'	111°01.13'	7.6	1.0W	18	141	2	0.16
170705	04:35:19.23	44°49.88'	110°46.76'	10.5	0.9W	6	278	7	0.04
170705	06:08:46.27	44°47.04'	111°02.12'	8.9	1.5W	22	145	4	0.17
170705	10:16:23.19	44°46.79'	111°00.98'	7.5	0.4	13	144	2	0.18
170705	14:30:14.18	44°46.40'	111°01.45'	8.0	0.3	16	138	2	0.18
170705	16:01:30.88	44°47.41'	111°03.94'	7.0	0.8	11	143	3	0.14
170706	01:13:55.31	44°46.56'	111°01.00'	6.6	1.5W	16	155	2	0.18
170706	01:21:55.64	44°46.30'	111°01.13'	7.9	0.5	11	137	2	0.15
170706	01:27:41.81	44°47.04'	111°01.23'	7.9	1.4W	17	146	3	0.17
170706	02:02:41.91	44°46.50'	111°00.89'	6.1	1.1W	16	140	2	0.17
170706	02:16:45.20	44°46.09'	111°00.77'	6.0	0.6	14	147	1	0.17
170706	02:38:31.74	44°46.81'	111°01.23'	6.4	1.5W	19	144	3	0.19
170706	02:40:27.66	44°47.03'	111°01.27'	7.9	1.5W	21	146	3	0.18
170706	03:33:55.91	44°46.89'	111°01.47'	8.4	2.5W	23	161	3	0.18
170706	03:34:53.73	44°47.05'	111°01.40'	7.8	2.1W	21	146	3	0.16
170706	03:35:56.87	44°46.67'	111°01.48'	6.7	--	7	142	3	0.14
170706	03:36:04.88	44°46.65'	111°01.22'	7.7	1.5W	18	141	2	0.17
170706	03:37:05.31	44°46.46'	111°00.95'	1.0	2.1W	20	140	2	0.22
170706	03:41:26.11	44°46.65'	111°01.19'	6.6	0.6	11	141	2	0.21
170706	03:46:46.18	44°46.70'	111°01.42'	7.8	0.3	11	142	3	0.16
170706	03:54:28.04	44°46.49'	111°01.38'	7.7	0.3	12	139	2	0.16
170706	04:05:26.18	44°47.07'	111°01.34'	7.3	1.3W	15	147	3	0.16
170706	04:15:25.01	44°46.60'	111°01.46'	6.9	0.6	17	140	2	0.18
170706	04:18:29.13	44°47.23'	111°01.34'	8.1	1.4W	18	116	3	0.15
170706	04:50:04.49	44°47.46'	111°01.47'	9.3	2.0W	22	69	4	0.17
170706	05:00:59.76	44°46.55'	111°01.65'	8.1	0.7W	17	139	2	0.19
170706	05:01:09.34	44°46.48'	111°01.33'	9.6	1.1W	11	139	2	0.14
170706	05:07:25.34	44°46.11'	111°01.79'	9.9	0.8W	13	133	2	0.14

Table 2. Earthquakes in the Yellowstone Region: July 1–September 30, 2017

DATE	ORIGIN TIME	LATITUDE	LONGITUDE	DEPTH	MAG	NO	GAP	DMN	RMS
170706	05:38:01.46	44°47.16'	111°01.16'	7.6	0.8	17	148	3	0.16
170706	05:57:01.38	44°46.21'	111°00.99'	7.5	0.2	12	136	1	0.15
170706	06:12:37.05	44°46.70'	111°01.35'	7.6	1.2W	17	142	2	0.15
170706	06:49:12.64	44°46.29'	111°01.17'	7.4	1.1	17	136	2	0.13
170706	10:20:38.62	44°46.75'	111°01.58'	7.4	0.6	14	142	3	0.17
170706	12:04:59.47	44°47.37'	111°01.49'	7.7	1.2W	17	151	4	0.19
170706	14:51:30.26	44°46.66'	111°02.52'	7.9	1.0W	13	138	3	0.18
170706	16:00:10.16	44°46.95'	111°01.81'	8.9	0.8	13	144	3	0.16
170706	20:14:26.24	44°46.28'	110°59.47'	8.1	0.8	7	242	2	0.14
170706	20:39:37.51	44°46.40'	111°02.32'	8.4	0.7	9	135	3	0.15
170706	21:07:16.52	44°37.60'	111°09.72'	12.3	0.5	11	145	5	0.19
170706	21:21:59.70	44°47.07'	111°01.20'	6.5	0.8	11	148	3	0.16
170706	21:35:05.78	44°47.77'	111°01.93'	7.4	0.9	17	155	5	0.17
170706	23:09:38.70	44°47.10'	111°01.27'	7.2	1.2W	16	148	3	0.21
170706	23:13:11.41	44°46.44'	111°01.54'	8.5	--	9	138	2	0.17
170707	01:21:02.83	44°45.74'	111°02.16'	7.7	0.1	8	160	2	0.17
170707	05:15:53.66	44°35.45'	110°58.93'	12.3	0.6W	15	132	9	0.23
170707	06:32:20.88	44°37.55'	111°09.63'	12.4	1.4W	23	143	5	0.17
170707	07:02:07.00	44°46.78'	111°01.49'	8.4	1.3W	17	142	3	0.19
170707	07:14:01.53	44°46.59'	111°01.56'	7.7	0.5	15	140	2	0.19
170707	07:14:08.90	44°46.44'	111°01.51'	7.8	1.6W	19	138	2	0.17
170707	07:17:39.96	44°46.63'	111°01.67'	8.1	1.5W	20	140	3	0.17
170707	07:57:25.62	44°46.89'	111°00.97'	7.5	0.5	17	145	3	0.21
170707	10:37:15.65	44°51.12'	111°24.54'	10.1	1.1	11	284	18	0.17
170707	11:52:21.62	44°48.01'	110°59.58'	4.0	0.9W	16	179	5	0.20
170707	17:53:53.61	44°47.41'	111°06.70'	10.8	0.7	7	294	9	0.14
170707	17:56:41.01	44°46.68'	111°02.01'	7.1	0.8	11	140	3	0.16
170707	20:23:30.69	44°46.74'	111°01.00'	6.5	0.9	12	143	2	0.20
170707	21:59:02.13	44°45.54'	110°59.59'	6.2	0.2	8	161	1	0.16
170708	01:34:13.18	44°46.33'	111°01.33'	7.8	1.0W	12	157	2	0.21
170708	09:58:02.22	44°46.79'	111°02.93'	6.1	1.0	20	139	4	0.20
170708	11:53:02.49	44°46.41'	111°01.95'	8.2	0.7	12	137	3	0.19
170708	14:47:38.35	44°45.04'	111°00.90'	6.2	2.3W	19	84	1	0.20
170708	17:12:36.64	44°46.92'	111°01.82'	6.5	1.1W	12	161	3	0.21
170708	18:55:27.45	44°45.54'	111°00.35'	6.9	0.8W	10	118	0	0.16
170708	19:32:05.09	44°44.01'	110°59.06'	2.1	0.6	12	115	3	0.12
170708	20:30:28.92	44°47.53'	111°01.61'	7.4	0.6	10	153	4	0.11
170708	20:30:59.39	44°47.08'	111°01.68'	7.3	1.4W	18	146	3	0.21
170708	20:48:54.42	44°47.02'	111°01.75'	9.0	2.2W	21	145	3	0.18
170708	21:03:33.10	44°46.91'	111°01.95'	7.7	0.5	13	144	3	0.20
170708	21:10:45.79	44°45.74'	111°01.40'	8.0	0.8W	8	282	1	0.16
170708	21:30:02.81	44°47.81'	111°00.05'	7.3	2.8W	21	122	4	0.23
170708	21:31:45.75	44°48.12'	111°00.10'	7.5	2.4W	18	125	5	0.18
170708	21:32:14.04	44°47.97'	110°59.51'	2.3	1.1	8	179	5	0.14
170708	21:38:19.17	44°47.34'	111°00.42'	4.1	1.1	13	153	3	0.19

Table 2. Earthquakes in the Yellowstone Region: July 1–September 30, 2017

DATE	ORIGIN TIME	LATITUDE	LONGITUDE	DEPTH	MAG	NO	GAP	DMN	RMS
170708	21:50:44.13	44°46.99'	111°01.50'	7.5	1.3W	15	163	3	0.22
170708	22:04:54.35	44°46.93'	111°00.63'	4.3	1.1W	13	146	3	0.21
170708	23:04:41.10	44°47.13'	111°00.11'	4.6	1.5W	16	151	3	0.23
170709	02:38:03.82	44°47.12'	111°00.13'	4.3	1.8W	17	150	3	0.22
170709	03:04:35.84	44°47.18'	111°00.37'	5.2	2.8W	21	150	3	0.21
170709	03:11:24.74	44°47.18'	111°00.22'	4.3	1.2W	16	151	3	0.22
170709	04:08:15.49	44°47.11'	111°00.19'	4.4	2.0W	20	150	3	0.20
170709	06:57:28.80	44°48.09'	111°00.39'	7.6	2.5W	22	87	5	0.17
170709	07:27:52.35	44°47.29'	111°00.29'	4.6	1.2W	16	152	3	0.23
170709	08:26:32.73	44°46.47'	111°01.37'	4.3	1.1W	15	139	2	0.24
170709	11:47:28.76	44°45.50'	111°02.24'	6.8	0.0	9	125	2	0.16
170709	18:25:34.62	44°47.30'	110°58.21'	10.6	0.1	6	156	4	0.14
170709	21:29:53.09	44°46.16'	111°01.02'	8.1	0.6	14	135	1	0.16
170709	21:30:38.31	44°46.88'	111°01.01'	7.5	1.3W	16	145	3	0.20
170710	00:52:47.54	44°45.25'	111°00.71'	6.8	1.5W	18	89	1	0.21
170710	03:07:05.85	44°44.78'	110°59.02'	4.2	0.6	10	116	2	0.16
170710	11:35:50.17	44°47.81'	111°02.72'	5.6	1.7W	17	154	5	0.13
170710	12:37:43.57	44°46.55'	111°03.08'	6.8	0.9W	13	153	4	0.20
170710	13:28:15.00	44°46.21'	111°02.44'	9.7	0.8W	9	133	3	0.18
170710	14:37:39.13	44°46.25'	111°02.19'	7.0	0.4	9	134	3	0.23
170710	17:29:59.16	44°45.53'	111°03.27'	7.5	0.6	9	126	4	0.21
170711	10:07:13.62	44°47.51'	111°01.51'	9.4	1.8W	22	153	4	0.13
170711	11:17:07.04	44°45.70'	111°02.11'	5.9	0.2	7	133	2	0.16
170711	11:58:27.72	44°23.66'	110°21.91'	3.0	0.9	8	157	6	0.14
170711	15:06:03.77	44°44.11'	110°59.93'	4.7	0.7	10	75	3	0.18
170711	18:17:33.02	44°47.90'	111°02.30'	9.5	1.2	10	156	5	0.14
170711	23:09:49.42	44°47.88'	111°03.52'	4.7	0.8	10	152	4	0.08
170711	23:22:12.11	44°47.03'	111°03.29'	5.9	0.6	10	141	5	0.27
170711	23:32:41.19	44°46.37'	111°01.01'	7.2	2.3W	23	138	2	0.21
170711	23:40:58.59	44°45.98'	111°01.70'	6.4	1.0W	14	132	2	0.27
170712	02:13:28.52	44°44.01'	111°12.39'	5.5	0.6	12	77	2	0.16
170712	02:32:16.33	44°47.57'	111°01.66'	9.6	1.6W	17	153	4	0.15
170712	02:44:31.69	44°47.33'	111°01.65'	9.5	2.5W	23	150	4	0.15
170712	02:57:51.93	44°47.35'	111°01.23'	7.9	0.9	15	151	4	0.15
170712	03:17:07.13	44°47.44'	111°01.59'	7.9	0.4	11	151	4	0.13
170712	07:26:33.38	44°46.03'	111°01.86'	7.7	0.3	11	132	2	0.23
170712	07:35:05.72	44°45.72'	111°00.47'	7.9	1.8W	23	130	0	0.16
170712	07:40:02.52	44°45.66'	111°00.44'	7.9	1.5W	20	130	0	0.17
170712	08:31:31.60	44°45.60'	111°00.37'	7.8	1.6W	19	129	0	0.15
170712	08:47:41.36	44°44.60'	111°00.16'	4.8	1.6W	20	75	2	0.25
170712	11:59:53.67	44°45.97'	111°01.90'	7.7	0.6	12	152	2	0.27
170712	13:51:05.03	44°45.88'	111°00.51'	7.3	1.3W	11	133	1	0.12
170712	14:05:47.72	44°45.06'	111°00.25'	6.1	0.9	13	80	1	0.24
170712	16:41:38.71	44°44.73'	111°00.69'	5.8	0.9W	10	68	2	0.29
170713	01:12:43.99	44°47.12'	111°00.95'	8.2	0.6	15	149	3	0.15

Table 2. Earthquakes in the Yellowstone Region: July 1–September 30, 2017

DATE	ORIGIN TIME	LATITUDE	LONGITUDE	DEPTH	MAG	NO	GAP	DMN	RMS
170713	04:49:42.15	44°46.17'	111°00.44'	6.4	1.4	15	136	1	0.14
170713	07:28:26.26	44°47.48'	111°00.11'	4.6	2.0W	17	156	4	0.16
170713	08:16:23.30	44°47.48'	111°01.35'	8.0	0.8	16	153	4	0.11
170713	17:32:33.24	44°47.54'	110°59.88'	5.3	2.2W	25	157	4	0.18
170713	19:12:31.16	44°48.01'	110°59.96'	4.8	1.3W	15	164	5	0.15
170713	21:04:19.35	44°47.47'	111°01.51'	8.6	1.6W	18	152	4	0.13
170714	06:50:29.44	44°43.99'	110°59.31'	3.9	1.2W	18	85	3	0.21
170714	07:08:17.18	44°45.71'	111°01.49'	8.6	0.9W	14	128	2	0.22
170714	07:31:58.99	44°43.99'	110°59.97'	5.1	1.0W	14	72	3	0.24
170714	15:44:03.49	44°46.01'	111°03.22'	7.4	0.6	14	147	4	0.22
170714	21:48:54.43	44°46.50'	111°01.07'	8.0	0.2	8	243	2	0.10
170715	00:59:36.23	44°47.20'	111°01.70'	8.4	0.4	13	164	4	0.16
170715	08:34:50.84	44°45.73'	111°00.78'	7.2	1.0W	13	130	1	0.12
170715	10:08:51.35	44°43.49'	111°05.13'	13.6	0.8	18	75	7	0.15
170715	10:54:39.71	44°46.37'	110°59.98'	5.6	0.3	9	140	2	0.14
170715	12:23:41.14	44°47.96'	111°06.83'	10.5	0.8	11	147	1	0.14
170715	12:40:52.08	44°45.85'	111°00.61'	7.8	1.9W	22	131	1	0.16
170715	13:09:38.26	44°17.78'	110°39.16'	10.5	0.4	8	130	11	0.17
170715	13:25:40.66	44°45.91'	111°00.40'	6.1	0.8	19	133	1	0.18
170715	15:34:49.20	44°45.79'	111°00.61'	7.7	2.4W	24	131	1	0.15
170715	16:02:44.24	44°46.48'	111°00.07'	7.2	0.6	9	163	2	0.08
170715	21:06:48.03	44°45.93'	111°00.21'	6.6	1.8W	20	134	1	0.18
170716	02:39:02.44	44°45.49'	111°13.45'	8.1	1.2	9	256	2	0.10
170716	07:34:25.88	44°43.85'	111°02.20'	10.2	1.2W	17	74	4	0.17
170716	13:05:19.05	44°44.39'	110°59.40'	3.6	0.3	7	119	3	0.14
170716	16:30:38.10	44°45.77'	111°00.73'	7.8	2.9W	20	131	1	0.16
170716	16:32:41.05	44°45.63'	111°00.56'	6.9	2.1W	23	129	0	0.17
170716	16:36:25.03	44°45.90'	111°00.72'	6.5	1.4W	20	132	1	0.17
170716	16:44:22.22	44°46.07'	111°00.29'	6.6	0.5	14	135	1	0.13
170716	17:21:06.60	44°45.77'	111°00.62'	7.8	3.3W	20	131	1	0.15
170716	17:25:04.62	44°45.92'	111°00.33'	5.5	1.5W	13	133	1	0.15
170716	17:25:25.48	44°45.85'	111°00.35'	5.7	1.4	16	132	1	0.12
170716	17:26:53.33	44°45.78'	111°00.24'	6.2	1.9W	20	131	0	0.14
170716	17:28:51.93	44°45.67'	111°00.71'	7.0	2.8W	24	129	0	0.14
170716	17:30:40.68	44°46.19'	110°59.98'	5.1	0.5	13	138	1	0.16
170716	17:30:56.59	44°45.68'	111°00.37'	4.9	1.1	14	130	0	0.12
170716	17:59:15.40	44°46.43'	111°00.23'	6.7	1.6W	17	69	2	0.19
170716	18:00:48.29	44°45.65'	111°00.35'	5.3	0.5	13	129	0	0.03
170716	18:01:18.64	44°45.35'	111°00.27'	4.9	0.8	11	102	0	0.11
170716	18:12:17.94	44°45.52'	111°00.20'	5.0	0.9	12	154	0	0.15
170716	18:16:03.81	44°45.78'	111°00.67'	4.8	0.1	11	131	1	0.13
170716	18:16:25.22	44°45.98'	111°00.60'	5.0	0.6	10	133	1	0.12
170716	18:31:00.57	44°45.96'	111°00.23'	5.5	1.7W	16	134	1	0.11
170716	18:31:32.47	44°45.81'	110°59.99'	4.9	0.7W	8	132	1	0.05
170716	18:32:41.63	44°45.27'	111°00.50'	5.1	0.5	11	104	1	0.15

Table 2. Earthquakes in the Yellowstone Region: July 1–September 30, 2017

DATE	ORIGIN TIME	LATITUDE	LONGITUDE	DEPTH	MAG	NO	GAP	DMN	RMS
170716	18:33:24.97	44°45.39'	111°00.18'	5.0	1.1W	15	111	0	0.08
170716	18:34:10.17	44°45.58'	111°00.27'	5.0	1.0	11	129	0	0.15
170716	18:43:20.06	44°44.91'	110°57.09'	0.6	0.1	8	135	4	0.12
170716	18:47:48.50	44°45.10'	110°57.86'	1.2	0.6	7	140	3	0.08
170716	18:58:26.11	44°45.31'	111°00.09'	4.9	1.2W	13	110	1	0.07
170716	19:03:51.79	44°45.67'	111°00.44'	4.8	0.4	9	183	0	0.12
170716	19:05:05.49	44°46.02'	111°00.18'	5.8	1.1W	12	134	1	0.10
170716	19:10:57.29	44°45.71'	111°00.74'	6.4	0.6	10	130	1	0.11
170716	19:27:35.54	44°45.51'	111°00.10'	5.6	1.6W	19	128	0	0.14
170716	20:31:16.27	44°45.29'	110°59.70'	4.3	0.5	10	158	1	0.13
170716	20:36:21.87	44°45.86'	110°58.98'	5.2	1.1W	11	160	2	0.09
170716	21:10:18.84	44°46.46'	111°00.00'	6.3	0.7	9	141	2	0.18
170716	21:22:59.71	44°45.60'	111°00.14'	5.9	2.3W	18	129	0	0.18
170716	21:43:00.79	44°45.46'	111°00.26'	5.6	1.5W	16	111	0	0.16
170716	22:14:35.13	44°45.12'	111°00.06'	5.3	1.8W	17	97	1	0.12
170716	22:17:33.65	44°45.31'	111°00.17'	5.0	1.3W	11	101	1	0.08
170717	01:55:02.64	44°45.29'	111°00.24'	4.6	1.1W	11	90	1	0.12
170717	01:56:20.89	44°45.29'	111°00.20'	5.1	1.2W	15	96	1	0.08
170717	02:02:50.25	44°45.33'	111°00.15'	5.1	0.3	8	114	1	0.03
170717	02:15:22.08	44°45.48'	111°00.16'	5.6	1.7	17	128	0	0.15
170717	02:18:39.88	44°46.05'	111°00.39'	6.8	1.3	19	135	1	0.12
170717	02:46:27.27	44°46.53'	111°08.68'	11.6	1.6W	17	104	4	0.15
170717	04:08:05.19	44°46.47'	111°00.44'	4.3	0.0	6	249	2	0.14
170717	04:08:11.51	44°43.53'	110°59.81'	2.7	1.1W	11	84	4	0.14
170717	04:08:53.43	44°45.43'	110°59.91'	4.2	0.8	9	141	1	0.13
170717	04:09:22.29	44°45.51'	111°00.44'	4.9	0.6	11	152	0	0.10
170717	04:13:45.73	44°45.51'	110°59.94'	5.0	0.4	12	128	1	0.19
170717	04:43:56.29	44°45.29'	110°59.88'	6.4	1.1W	13	124	1	0.15
170717	05:37:46.67	44°45.50'	110°59.33'	5.2	1.3W	13	137	1	0.11
170717	06:09:46.73	44°45.46'	110°59.98'	5.0	1.1W	14	136	1	0.14
170717	08:22:54.49	44°45.52'	111°00.33'	5.1	0.5	8	109	0	0.08
170717	09:22:39.50	44°46.02'	110°59.65'	6.1	1.4W	13	186	1	0.15
170717	10:48:49.26	44°45.11'	111°00.02'	5.0	0.9W	11	100	1	0.08
170717	11:54:38.64	44°45.03'	110°59.22'	4.5	0.7	8	154	2	0.13
170717	12:05:31.56	44°45.79'	110°59.77'	5.9	0.9	14	143	1	0.12
170717	12:09:07.25	44°46.68'	110°59.86'	7.7	1.5W	19	69	2	0.17
170717	12:10:11.65	44°46.03'	110°59.86'	7.2	1.6W	17	135	1	0.15
170717	12:15:34.92	44°44.69'	110°46.82'	4.9	1.6W	12	160	7	0.12
170717	12:19:23.73	44°44.79'	110°46.85'	5.3	1.5W	11	162	7	0.10
170717	12:51:29.49	44°45.05'	110°46.74'	8.1	1.0W	9	169	7	0.15
170717	13:48:56.94	44°46.92'	111°06.71'	8.6	0.3	7	142	2	0.10
170717	14:03:07.33	44°45.33'	110°59.94'	5.2	2.2W	16	124	1	0.12
170717	14:05:06.93	44°45.37'	111°00.29'	5.3	2.5	18	88	0	0.14
170717	14:21:23.02	44°45.55'	111°00.41'	5.1	1.8W	13	137	0	0.14
170717	14:21:52.05	44°45.78'	111°00.63'	5.5	0.9	12	141	1	0.06

Table 2. Earthquakes in the Yellowstone Region: July 1–September 30, 2017

DATE	ORIGIN TIME	LATITUDE	LONGITUDE	DEPTH	MAG	NO	GAP	DMN	RMS
170717	14:31:01.34	44°45.31'	110°59.88'	4.4	0.7	8	126	1	0.16
170717	15:17:46.20	44°45.05'	111°00.03'	5.0	0.3	6	124	1	0.10
170717	15:21:06.94	44°45.51'	110°59.76'	5.3	0.5	10	156	1	0.10
170717	15:58:34.14	44°45.22'	111°00.75'	4.5	0.4	7	194	1	0.13
170717	16:34:49.80	44°50.54'	111°22.02'	10.3	1.0	11	148	5	0.10
170717	18:14:57.15	44°46.34'	111°00.23'	7.6	1.5	15	68	1	0.18
170717	19:59:35.08	44°45.73'	111°00.13'	6.3	0.6	7	183	0	0.09
170718	00:28:13.91	44°45.57'	110°59.83'	4.9	1.4W	11	138	1	0.10
170718	03:22:49.01	44°14.50'	110°47.01'	4.4	1.4	10	115	4	0.24
170718	04:43:07.73	44°47.10'	111°01.20'	8.1	0.8	13	115	3	0.11
170718	04:43:07.94	44°46.53'	111°01.01'	6.9	0.6	12	154	2	0.19
170718	08:09:57.18	44°47.33'	111°01.47'	7.4	0.5	11	207	4	0.10
170718	08:51:26.22	44°47.86'	111°01.84'	9.3	0.9	16	121	5	0.10
170718	16:19:55.12	44°47.41'	111°01.27'	10.2	2.5W	18	171	4	0.11
170718	16:20:28.82	44°46.79'	111°01.14'	7.2	0.3	7	160	2	0.11
170718	16:20:42.22	44°46.03'	111°00.84'	7.9	0.8	7	145	1	0.09
170718	20:31:10.47	44°47.25'	111°02.27'	10.5	3.6W	37	46	4	0.15
170718	20:32:18.79	44°46.21'	111°01.84'	8.2	1.3	8	145	2	0.09
170718	20:33:56.38	44°46.87'	111°01.65'	7.8	2.2W	15	113	3	0.15
170718	20:36:29.19	44°47.15'	111°01.59'	-0.7	0.9	6	194	3	0.07
170718	20:40:24.96	44°47.49'	111°02.40'	10.2	2.8W	25	48	4	0.14
170718	20:42:07.10	44°46.63'	111°02.44'	6.4	2.0W	13	188	3	0.22
170718	20:44:16.09	44°46.73'	111°01.55'	6.7	0.3	8	199	3	0.15
170718	20:47:39.59	44°47.12'	111°00.46'	11.8	0.1	6	202	3	0.09
170718	20:48:03.42	44°46.30'	111°01.18'	6.9	0.1	6	193	2	0.07
170718	20:51:34.52	44°46.75'	111°01.36'	7.7	2.6W	15	159	3	0.13
170718	20:52:45.19	44°47.61'	111°02.10'	9.9	2.9W	27	49	4	0.15
170718	20:54:09.96	44°46.99'	111°01.89'	8.1	1.1	10	163	3	0.09
170718	20:56:44.56	44°46.00'	111°02.02'	6.9	-0.2	8	140	2	0.09
170718	20:56:57.16	44°46.48'	111°08.39'	9.0	0.3	6	206	5	0.05
170718	20:57:10.36	44°46.27'	111°01.66'	7.9	1.2	8	147	2	0.07
170718	20:58:07.41	44°46.85'	111°01.42'	7.0	0.6	7	189	3	0.07
170718	21:12:15.59	44°46.90'	111°01.84'	7.2	0.7	7	255	3	0.12
170718	21:32:39.41	44°46.07'	111°01.65'	6.7	1.0	7	143	2	0.11
170718	21:33:24.42	44°44.58'	111°00.98'	6.7	0.4	6	191	2	0.11
170718	21:39:29.72	44°46.64'	111°01.78'	6.8	0.3	9	186	3	0.15
170718	21:48:35.04	44°46.73'	111°01.19'	8.1	0.8	14	159	2	0.15
170718	22:03:23.77	44°46.78'	111°00.98'	8.0	0.8	8	245	2	0.13
170718	22:04:09.54	44°46.83'	111°00.94'	6.3	0.3	9	199	2	0.11
170718	22:10:39.54	44°46.30'	111°08.65'	8.5	0.7	9	204	5	0.12
170718	22:15:16.97	44°46.76'	111°01.06'	6.7	0.5	7	198	2	0.08
170718	22:41:15.02	44°44.64'	111°00.36'	4.4	0.2	7	167	2	0.08
170718	22:59:33.77	44°47.06'	111°01.69'	7.3	2.5W	15	166	3	0.12
170718	23:05:21.11	44°47.03'	111°01.06'	6.3	0.5	8	191	3	0.10
170719	03:03:28.59	44°46.71'	111°01.49'	8.0	0.6	12	158	3	0.15

Table 2. Earthquakes in the Yellowstone Region: July 1–September 30, 2017

DATE	ORIGIN TIME	LATITUDE	LONGITUDE	DEPTH	MAG	NO	GAP	DMN	RMS
170719	03:52:48.07	44°46.13'	111°01.66'	7.6	1.0W	13	145	2	0.11
170719	06:03:12.41	44°46.90'	111°02.07'	8.7	1.5W	16	160	3	0.14
170719	06:07:40.55	44°46.67'	111°01.88'	9.4	0.9	13	156	3	0.11
170719	06:07:54.33	44°46.66'	111°01.48'	7.1	1.4W	12	157	3	0.11
170719	06:42:43.33	44°34.38'	110°58.88'	10.0	1.0	10	119	10	0.06
170719	06:44:22.03	44°47.00'	111°02.30'	7.7	0.9W	7	193	4	0.04
170719	06:51:10.81	44°46.56'	111°01.65'	7.3	1.3W	16	154	3	0.16
170719	06:51:36.40	44°46.04'	111°01.77'	6.6	-0.1	7	177	2	0.14
170719	07:56:45.24	44°47.19'	111°02.25'	8.4	1.2W	14	167	4	0.15
170719	08:09:57.44	44°46.67'	111°01.81'	7.8	0.8	14	156	3	0.12
170719	09:17:05.87	44°45.26'	111°02.61'	5.1	0.3	7	126	3	0.09
170719	10:29:28.00	44°46.75'	111°01.92'	7.4	0.6	15	157	3	0.15
170719	11:40:40.22	44°47.21'	111°02.38'	9.7	1.9W	17	167	4	0.12
170719	16:10:01.36	44°46.05'	111°00.56'	4.9	0.7	10	176	1	0.13
170719	16:56:16.64	44°46.62'	111°02.34'	7.1	0.6	12	153	3	0.13
170719	18:09:39.36	44°45.43'	110°59.69'	5.2	1.7W	13	136	1	0.13
170719	20:34:48.91	44°46.78'	111°01.30'	6.2	0.4	10	159	3	0.13
170719	20:41:36.48	44°45.97'	111°01.18'	5.7	0.6	10	143	1	0.14
170719	22:27:11.95	44°46.65'	111°01.83'	7.0	0.0	11	187	3	0.15
170719	23:58:36.10	44°45.55'	110°59.11'	5.1	1.7W	14	139	2	0.12
170720	00:25:40.54	44°45.17'	110°58.99'	4.8	1.0	11	132	2	0.07
170720	00:33:21.37	44°45.04'	110°59.36'	5.0	0.5	9	122	2	0.13
170720	00:45:07.52	44°45.81'	110°59.34'	6.4	2.3W	16	143	1	0.13
170720	01:40:05.13	44°46.06'	110°59.11'	6.7	1.3W	14	105	2	0.14
170720	01:50:42.15	44°45.64'	110°59.32'	5.4	1.5W	14	141	1	0.12
170720	02:00:16.80	44°45.07'	110°59.02'	4.6	0.2	10	130	2	0.09
170720	04:00:31.33	44°45.44'	110°59.12'	4.9	0.4	11	137	2	0.12
170720	04:01:58.82	44°45.72'	110°59.41'	6.0	2.0W	20	142	1	0.15
170720	04:18:48.94	44°46.93'	111°01.23'	7.4	0.3	11	163	3	0.10
170720	06:03:25.95	44°47.49'	111°01.73'	9.9	1.3	14	191	4	0.15
170720	06:07:38.92	44°47.25'	111°01.55'	7.0	0.8	12	195	3	0.10
170720	07:40:59.62	44°45.80'	110°59.32'	5.8	1.3	15	143	1	0.16
170720	08:59:21.91	44°46.56'	111°03.29'	8.7	0.7	12	146	4	0.15
170720	09:11:20.24	44°45.46'	110°59.04'	5.5	0.6	9	155	2	0.10
170720	09:14:49.27	44°45.77'	110°59.46'	5.4	0.9	13	142	1	0.12
170720	09:41:54.35	44°46.27'	111°02.05'	8.2	1.6W	14	166	3	0.15
170720	09:52:21.82	44°45.31'	110°59.06'	5.0	0.7	11	134	2	0.08
170720	10:16:01.81	44°45.04'	110°59.02'	5.0	0.2	8	129	2	0.11
170720	10:20:39.11	44°44.71'	110°59.48'	4.3	0.7W	7	130	2	0.07
170720	10:34:15.61	44°45.60'	110°59.18'	5.5	1.7W	16	140	2	0.16
170720	11:16:19.26	44°45.93'	110°59.42'	5.4	1.5	8	209	1	0.08
170720	12:14:30.96	44°46.08'	110°59.63'	6.5	0.9W	12	186	1	0.14
170720	12:24:45.67	44°45.86'	110°59.24'	5.5	1.1	14	182	2	0.16
170720	12:34:35.95	44°45.30'	110°59.05'	5.2	0.7	9	144	2	0.11
170720	12:46:42.81	44°45.62'	110°59.60'	6.2	2.3W	17	139	1	0.14

Table 2. Earthquakes in the Yellowstone Region: July 1–September 30, 2017

DATE	ORIGIN TIME	LATITUDE	LONGITUDE	DEPTH	MAG	NO	GAP	DMN	RMS
170720	12:51:38.76	44°46.50'	111°02.81'	8.6	0.8W	13	186	4	0.18
170720	12:55:02.58	44°45.09'	110°59.24'	4.3	1.0W	8	128	2	0.07
170720	13:02:13.53	44°45.64'	110°59.87'	5.3	0.6W	8	177	1	0.11
170720	13:03:31.40	44°45.73'	110°59.58'	5.4	2.2W	14	142	1	0.14
170720	14:02:44.31	44°45.59'	110°59.26'	5.2	0.5	8	165	1	0.09
170720	14:15:25.17	44°44.89'	110°59.68'	3.4	0.8	8	104	2	0.12
170720	14:26:31.32	44°45.76'	110°59.40'	5.0	0.6	8	180	1	0.09
170720	14:42:44.74	44°45.04'	110°59.22'	4.6	0.4	8	125	2	0.13
170720	15:57:18.34	44°45.32'	110°59.17'	4.8	0.5	9	145	2	0.11
170720	16:01:16.76	44°45.54'	110°59.98'	5.4	1.6	14	137	1	0.14
170720	16:15:15.04	44°45.44'	110°59.81'	5.1	1.0	11	136	1	0.14
170720	16:17:57.00	44°45.28'	110°59.29'	5.2	2.0W	13	134	2	0.17
170720	16:25:34.47	44°44.67'	111°00.25'	5.1	1.5W	6	126	2	0.08
170720	16:43:18.19	44°45.31'	110°59.48'	5.5	0.4	10	134	1	0.10
170720	17:09:14.46	44°56.20'	110°46.08'	2.3*	0.6	5	287	27	0.05
170720	17:16:09.14	44°44.40'	110°59.36'	3.3	1.5	6	171	3	0.08
170720	18:00:01.73	44°44.91'	110°59.76'	4.3	0.6	7	101	1	0.15
170720	18:05:08.82	44°46.11'	111°00.47'	5.5	0.6	7	176	1	0.16
170720	18:23:38.72	44°45.07'	110°59.00'	4.1	0.3	7	131	2	0.09
170720	18:34:07.61	44°44.91'	110°59.33'	3.4	0.6	7	116	2	0.18
170720	18:38:12.26	44°44.90'	110°59.03'	4.2	0.4	7	122	2	0.11
170720	18:43:26.53	44°45.48'	110°59.06'	4.9	1.8W	12	138	2	0.13
170720	18:51:31.77	44°45.51'	110°59.42'	5.0	1.7W	13	138	1	0.13
170720	19:23:58.51	44°44.83'	111°00.14'	4.7	1.4	6	145	1	0.08
170720	19:34:23.65	44°44.92'	110°58.80'	3.9	0.9	7	126	2	0.11
170720	19:43:59.98	44°46.02'	110°59.31'	5.6	1.0	10	184	2	0.11
170720	20:05:19.91	44°46.30'	110°57.15'	6.9	1.8W	5	273	4	0.09
170720	20:10:22.20	44°45.16'	110°59.43'	5.4	0.8	9	128	1	0.09
170720	20:59:32.49	44°44.62'	111°00.18'	3.9	0.6	7	93	2	0.12
170720	21:28:36.63	44°46.64'	111°01.20'	7.6	0.1	11	156	2	0.15
170720	21:37:21.75	44°45.03'	110°59.02'	4.3	0.4	6	129	2	0.09
170720	22:46:29.35	44°46.32'	111°02.00'	7.1	1.2W	7	156	3	0.09
170721	03:11:27.76	44°46.14'	111°02.98'	7.5	0.6	11	138	4	0.13
170721	04:17:42.70	44°45.82'	111°01.31'	6.8	0.0	7	187	1	0.12
170721	04:47:06.43	44°45.34'	110°59.65'	4.6	0.9	11	135	1	0.11
170721	05:24:12.70	44°44.53'	110°59.64'	2.4	0.8	11	122	2	0.16
170721	07:51:33.30	44°45.75'	110°59.48'	5.2	0.3	7	181	1	0.12
170721	09:14:27.29	44°45.41'	110°59.39'	5.7	1.6W	14	136	1	0.13
170721	09:26:52.03	44°44.90'	111°00.55'	4.6	0.8W	8	113	1	0.21
170721	11:29:55.61	44°20.90'	110°38.93'	5.8	0.4	14	127	8	0.19
170721	11:32:23.27	44°46.44'	110°59.64'	7.9	1.4W	14	115	2	0.16
170721	12:04:45.28	44°45.00'	110°58.54'	3.1	0.8W	8	132	3	0.10
170721	12:15:04.62	44°45.77'	110°59.75'	6.8	0.1	9	191	1	0.12
170721	12:15:32.39	44°45.27'	110°59.12'	5.2	0.8W	12	141	2	0.14
170721	12:15:51.07	44°44.89'	110°58.67'	3.6	0.7	8	138	3	0.15

Table 2. Earthquakes in the Yellowstone Region: July 1–September 30, 2017

DATE	ORIGIN TIME	LATITUDE	LONGITUDE	DEPTH	MAG	NO	GAP	DMN	RMS
170721	15:24:46.64	44°47.62'	111°03.12'	7.7	0.1	6	150	4	0.03
170721	15:38:44.89	44°47.65'	111°03.09'	6.6	0.3	10	150	4	0.09
170721	16:42:43.01	44°48.14'	111°02.55'	7.7	0.1	9	159	5	0.03
170721	16:44:15.41	44°45.95'	110°59.96'	6.1	1.5W	12	133	1	0.12
170721	16:50:41.01	44°47.37'	111°01.36'	8.2	1.3W	14	151	4	0.10
170721	17:01:38.76	44°47.44'	111°01.53'	6.9	0.4	8	152	4	0.07
170721	17:02:09.59	44°47.30'	111°01.45'	7.3	1.0W	13	149	4	0.08
170721	18:23:02.87	44°46.85'	111°01.35'	8.1	0.4	11	144	3	0.12
170721	21:09:42.90	44°47.95'	110°59.87'	7.9	0.3	8	163	4	0.13
170721	21:10:03.23	44°46.90'	111°00.99'	7.3	0.5	7	145	3	0.13
170721	23:41:20.85	44°47.28'	111°01.17'	8.2	1.2W	13	171	3	0.15
170722	01:52:35.36	44°45.05'	110°58.85'	3.8	0.5	8	131	2	0.08
170722	03:32:02.69	44°45.78'	111°11.63'	12.2	0.8	16	153	1	0.18
170722	04:38:20.83	44°46.74'	111°01.95'	8.4	1.0W	14	141	3	0.19
170722	07:45:57.56	44°45.36'	111°00.19'	8.1	1.5W	19	105	0	0.13
170722	07:57:33.64	44°45.33'	110°59.99'	4.9	0.4	11	121	1	0.13
170722	08:55:16.47	44°46.80'	111°00.55'	6.4	1.0	9	244	2	0.13
170722	19:13:36.41	44°45.19'	111°00.09'	7.1	1.5W	17	98	1	0.16
170722	23:37:14.45	44°42.87'	111°06.92'	11.8	0.7	11	81	8	0.12
170723	01:18:30.57	44°47.34'	111°00.94'	10.2	1.2W	13	152	3	0.11
170723	03:48:51.47	44°38.99'	110°56.58'	9.1	1.3W	19	48	6	0.16
170723	05:43:55.55	44°39.07'	110°56.61'	8.0	1.1W	15	85	6	0.17
170723	08:07:24.22	44°45.63'	110°59.97'	6.5	0.2	10	179	1	0.10
170723	10:28:12.95	44°46.69'	111°04.68'	9.9	0.8	17	131	3	0.14
170723	10:43:20.16	44°46.96'	111°04.75'	9.9	0.7	13	134	6	0.11
170723	12:18:58.77	44°47.48'	111°02.15'	8.0	1.4W	12	166	4	0.11
170723	12:24:37.72	44°47.43'	111°02.20'	8.0	1.1W	15	149	4	0.16
170723	12:49:44.39	44°48.00'	111°01.63'	8.2	0.7	9	209	5	0.13
170723	12:57:36.56	44°47.24'	111°01.64'	9.3	0.9	12	149	4	0.11
170723	13:34:05.21	44°46.79'	111°00.75'	8.2	0.4	15	144	2	0.12
170723	14:55:01.05	44°46.89'	111°04.94'	10.9	1.3W	15	132	3	0.12
170723	14:57:06.19	44°46.93'	111°04.94'	9.9	0.2	7	165	7	0.11
170723	15:00:02.56	44°46.99'	111°04.59'	11.2	0.7	8	136	6	0.06
170723	15:05:25.18	44°46.74'	111°04.83'	9.4	0.2	10	131	6	0.11
170723	15:18:17.85	44°47.34'	111°01.11'	7.2	0.3	13	152	3	0.16
170723	15:24:04.44	44°46.80'	111°05.14'	9.8	1.1	12	144	2	0.11
170723	15:41:53.47	44°46.75'	111°05.24'	8.6	0.9	11	146	2	0.11
170723	19:26:04.64	44°47.36'	111°01.45'	8.6	0.2	11	151	4	0.06
170723	19:45:39.48	44°39.13'	110°57.28'	6.4	0.1	11	86	7	0.08
170723	20:55:19.02	44°38.81'	110°56.12'	8.3	1.1W	16	85	5	0.15
170723	22:33:53.43	44°47.56'	111°02.51'	7.9	1.5W	16	150	5	0.15
170724	00:24:53.34	44°47.41'	111°00.90'	8.5	1.1W	16	153	4	0.14
170724	03:05:09.20	44°47.03'	111°01.36'	9.0	1.9W	17	146	3	0.14
170724	03:09:57.76	44°47.33'	111°01.15'	6.9	0.6	14	151	3	0.13
170724	03:22:29.07	44°47.09'	111°01.47'	9.3	2.2W	18	147	3	0.14

Table 2. Earthquakes in the Yellowstone Region: July 1–September 30, 2017

DATE	ORIGIN TIME	LATITUDE	LONGITUDE	DEPTH	MAG	NO	GAP	DMN	RMS
170724	03:22:48.57	44°47.60'	111°00.34'	6.8	1.3	9	173	4	0.16
170724	03:23:36.12	44°47.08'	111°01.45'	8.9	2.0W	21	147	3	0.15
170724	03:23:59.24	44°46.67'	111°01.06'	8.3	1.7W	15	142	2	0.12
170724	03:27:26.16	44°47.29'	111°01.22'	7.1	0.4	14	150	3	0.14
170724	03:41:55.71	44°46.62'	111°00.95'	7.9	0.5	13	142	2	0.16
170724	05:19:03.50	44°17.05'	110°37.07'	7.5	0.4	10	117	8	0.13
170724	05:19:45.75	44°47.04'	111°01.37'	7.4	-0.3	6	147	3	0.10
170724	05:20:44.27	44°16.75'	110°37.16'	7.5	1.3W	18	94	8	0.20
170724	05:26:08.44	44°16.84'	110°37.34'	8.3	0.9	17	87	8	0.19
170724	05:50:07.96	44°47.03'	111°01.38'	7.8	0.2	11	146	3	0.11
170724	06:33:02.26	44°47.31'	111°01.25'	7.6	1.2W	14	150	3	0.12
170724	07:18:18.88	44°47.33'	111°01.18'	9.7	2.1W	15	151	3	0.12
170724	08:01:02.15	44°47.57'	111°02.56'	6.3	1.3W	14	150	5	0.09
170724	10:21:06.76	44°43.85'	111°14.25'	4.7	1.4	10	122	2	0.07
170724	13:46:23.26	44°45.69'	110°59.93'	6.3	1.2W	10	130	1	0.08
170724	16:08:03.56	44°46.37'	110°59.98'	5.9	0.5	8	237	2	0.07
170724	18:13:26.92	44°45.21'	111°01.03'	4.5	0.6	10	144	1	0.13
170724	22:09:12.32	44°43.64'	111°14.48'	5.0	1.2	14	132	2	0.15
170724	23:20:28.14	44°47.04'	111°00.64'	8.5	1.2W	12	148	3	0.11
170725	15:55:48.11	44°47.48'	111°02.72'	7.2	1.9W	15	149	5	0.12
170725	17:41:30.77	44°43.94'	111°14.88'	4.9	0.7	7	206	3	0.03
170725	18:16:33.23	44°46.94'	111°03.17'	6.0	0.1	7	140	4	0.06
170725	18:49:37.82	44°47.37'	111°01.34'	8.0	0.8	11	151	4	0.07
170725	20:09:42.08	44°46.69'	111°00.73'	8.1	0.9W	13	143	2	0.14
170726	04:57:10.04	44°14.24'	110°47.12'	3.0	2.7W	23	77	4	0.19
170726	04:58:08.24	44°14.31'	110°47.35'	3.4	2.6W	24	75	4	0.18
170726	05:00:43.12	44°13.93'	110°47.27'	4.3	1.1	7	109	5	0.20
170726	05:00:57.78	44°47.14'	111°01.44'	10.0	2.2W	16	147	3	0.14
170726	05:08:53.70	44°14.29'	110°47.30'	4.1	1.4	10	108	4	0.19
170726	05:11:09.61	44°14.15'	110°47.01'	5.1	1.4	12	110	4	0.29
170726	05:16:23.92	44°45.80'	111°03.25'	7.8	0.0	6	142	4	0.04
170726	05:16:36.24	44°14.20'	110°50.65'	2.8	0.9	7	169	5	0.03
170726	08:30:28.98	44°47.46'	111°01.48'	8.1	1.2W	13	152	4	0.08
170726	08:41:36.42	44°46.57'	111°01.16'	8.0	0.9W	12	185	2	0.09
170726	08:59:22.63	44°47.30'	111°01.16'	8.5	0.1	9	150	3	0.04
170726	09:08:45.65	44°46.83'	111°00.83'	8.6	1.1W	14	162	2	0.11
170726	09:19:13.92	44°47.61'	111°02.22'	7.1	1.4W	15	153	5	0.13
170726	09:29:02.26	44°47.23'	111°01.21'	8.6	0.9W	13	150	3	0.06
170726	09:31:04.67	44°47.29'	111°01.05'	8.9	0.6W	9	150	3	0.08
170726	09:31:14.13	44°47.26'	111°01.28'	8.1	0.6W	8	150	3	0.06
170726	09:31:35.02	44°47.15'	111°01.26'	8.5	0.7W	9	148	3	0.07
170726	10:21:28.18	44°47.03'	111°01.25'	8.0	1.0W	11	146	3	0.14
170726	10:48:50.80	44°46.76'	111°01.07'	8.1	0.8W	11	143	2	0.15
170726	10:48:59.12	44°46.66'	111°00.90'	7.1	1.1W	7	142	2	0.04
170726	11:12:12.46	44°46.95'	111°01.06'	7.7	0.8W	9	146	3	0.08

Table 2. Earthquakes in the Yellowstone Region: July 1–September 30, 2017

DATE	ORIGIN TIME	LATITUDE	LONGITUDE	DEPTH	MAG	NO	GAP	DMN	RMS
170726	11:15:11.29	44°46.46'	111°01.83'	8.1	1.0W	6	184	3	0.04
170726	12:51:17.12	44°47.13'	111°00.99'	8.5	0.8W	7	256	3	0.07
170726	13:15:13.27	44°47.12'	111°01.28'	8.9	1.1W	8	148	3	0.06
170726	15:14:12.01	44°47.03'	111°01.47'	7.9	0.5	11	146	3	0.11
170726	17:20:54.33	44°47.27'	111°01.10'	9.1	0.2	9	205	3	0.08
170726	17:42:53.34	44°14.51'	110°47.28'	3.9	1.6	11	109	3	0.23
170726	18:19:32.60	44°47.12'	111°01.26'	7.9	0.2	9	148	3	0.04
170726	18:30:37.23	44°46.10'	110°59.28'	5.4	1.4W	12	137	2	0.09
170726	18:55:51.74	44°45.84'	110°59.35'	5.5	0.5	7	133	1	0.03
170726	19:19:42.30	44°45.82'	110°59.44'	5.7	0.6	7	133	1	0.03
170726	19:42:27.93	44°47.74'	111°02.05'	7.0	1.0	7	201	5	0.05
170726	23:12:52.78	44°47.55'	111°00.51'	7.8	0.8W	7	172	4	0.09
170727	00:01:30.04	44°47.32'	111°00.90'	8.2	1.3W	13	152	3	0.12
170727	17:00:26.14	44°47.19'	111°01.92'	8.8	1.0W	9	148	4	0.06
170727	17:41:16.55	44°47.66'	111°01.72'	8.2	1.6W	13	154	4	0.09
170727	18:37:25.46	44°47.17'	111°02.05'	8.1	0.5	13	146	4	0.17
170727	19:36:10.91	44°47.01'	111°01.63'	8.3	--	8	145	3	0.04
170727	19:36:11.23	44°47.00'	111°01.33'	9.0	1.4W	12	146	3	0.06
170728	04:55:34.80	44°47.03'	111°04.41'	11.0	0.2	11	137	6	0.14
170729	01:17:25.85	44°47.10'	111°00.22'	6.0	1.4W	18	150	3	0.16
170729	03:41:46.46	44°47.00'	111°00.58'	6.4	1.3W	15	148	3	0.20
170729	11:41:16.67	44°47.75'	111°02.25'	6.8	0.6	17	154	5	0.12
170729	11:49:35.20	44°47.53'	111°02.52'	7.8	1.9W	19	150	5	0.13
170729	16:04:53.91	44°41.52'	111°06.33'	9.6	0.8W	7	238	11	0.08
170729	16:32:58.84	44°47.44'	111°01.12'	8.4	0.7	17	153	4	0.15
170729	17:40:02.87	44°46.79'	111°04.33'	10.7	0.2	9	134	6	0.10
170729	22:41:24.75	44°47.70'	111°03.14'	7.1	1.3W	16	150	4	0.10
170730	04:55:49.57	44°47.74'	111°03.00'	5.7	0.5	8	198	5	0.12
170730	07:39:26.51	44°47.48'	111°03.46'	6.6	0.6	11	147	4	0.09
170730	13:32:33.25	44°49.85'	110°56.96'	5.7	0.6	9	203	9	0.13
170731	04:22:50.79	44°45.56'	110°59.57'	5.4	0.2	7	129	1	0.12
170731	15:27:00.62	44°47.26'	111°01.00'	8.2	0.4	12	150	3	0.14
170731	22:01:23.29	44°46.71'	111°02.12'	5.1	0.2	9	155	3	0.10
170801	01:25:23.88	44°46.73'	111°04.76'	10.5	0.3	14	147	3	0.16
170801	01:50:18.86	44°46.78'	111°05.51'	8.6	0.5	8	119	2	0.13
170801	01:53:12.98	44°46.59'	111°05.44'	9.7	0.2	12	114	3	0.15
170801	02:24:48.41	44°44.54'	111°05.73'	4.7	0.3	7	107	6	0.08
170801	02:31:48.87	44°44.36'	111°07.72'	5.8	0.6W	9	65	5	0.12
170801	10:36:55.60	44°47.06'	111°04.85'	10.7	0.5	10	162	2	0.15
170801	12:07:20.56	44°48.20'	111°04.47'	7.2	2.0W	20	153	3	0.12
170801	13:16:12.73	44°48.13'	111°04.67'	7.3	3.1W	34	81	2	0.13
170801	13:55:33.29	44°47.21'	111°01.29'	9.0	0.8W	9	149	3	0.05
170801	15:15:43.66	44°48.20'	111°04.42'	7.5	2.8W	33	83	3	0.12
170801	15:31:53.03	44°48.25'	111°03.97'	6.7	1.2W	14	155	3	0.07
170801	18:04:51.01	44°47.58'	111°01.54'	8.8	0.2	7	261	4	0.06

Table 2. Earthquakes in the Yellowstone Region: July 1–September 30, 2017

DATE	ORIGIN TIME	LATITUDE	LONGITUDE	DEPTH	MAG	NO	GAP	DMN	RMS
170801	21:44:40.64	44°46.68'	111°00.41'	7.2	0.5	8	143	2	0.11
170801	21:54:54.43	44°46.81'	110°59.64'	7.9	1.2W	10	167	3	0.20
170801	22:14:28.85	44°48.20'	111°03.94'	5.4	0.4	9	155	3	0.09
170802	04:51:26.80	44°48.12'	111°04.09'	7.1	1.4W	16	153	3	0.14
170802	04:51:41.76	44°48.13'	111°04.07'	6.3	1.2	16	154	3	0.14
170802	13:17:10.43	44°47.85'	111°03.80'	6.9	0.5	11	190	3	0.13
170802	13:23:45.19	44°46.53'	111°04.34'	2.7	0.6	6	157	4	0.21
170802	13:59:49.77	44°48.00'	111°03.83'	5.3	0.4	8	193	3	0.14
170802	16:00:20.86	44°47.02'	111°00.75'	10.0	2.0W	19	147	3	0.14
170802	16:01:34.74	44°46.89'	111°00.82'	8.5	-0.6	6	146	3	0.06
170802	16:01:44.21	44°46.93'	111°00.58'	9.0	1.3W	16	146	3	0.13
170802	16:02:05.68	44°44.27'	111°04.00'	5.1	-0.2	6	197	5	0.06
170802	16:02:54.68	44°47.11'	111°00.60'	8.8	1.5W	17	149	3	0.11
170802	16:03:13.35	44°46.78'	111°00.30'	7.8	0.7W	7	145	2	0.08
170802	16:46:04.02	44°47.08'	111°00.71'	8.1	1.3W	14	149	3	0.13
170802	16:46:15.28	44°47.03'	111°00.52'	7.8	1.4W	13	148	3	0.16
170802	16:53:10.97	44°46.32'	111°00.58'	7.7	0.9W	9	179	1	0.11
170802	17:28:08.39	44°48.15'	111°03.84'	6.2	1.2W	17	155	3	0.06
170802	17:35:08.44	44°48.08'	111°03.68'	6.2	1.2W	14	154	4	0.12
170802	17:50:38.83	44°48.09'	111°03.66'	6.9	0.5	11	154	4	0.03
170802	17:54:10.50	44°46.36'	111°00.25'	8.2	0.8W	9	191	1	0.10
170802	18:10:56.90	44°48.13'	111°03.87'	6.6	0.9W	16	154	3	0.07
170802	18:24:47.80	44°47.33'	111°04.36'	6.6	0.2	9	172	3	0.11
170802	18:33:47.73	44°47.43'	110°59.97'	8.2	1.2W	13	173	3	0.19
170802	18:48:15.52	44°47.23'	111°00.37'	7.8	1.2W	10	152	3	0.13
170802	19:01:58.52	44°47.25'	111°00.14'	8.5	0.8W	12	170	3	0.14
170802	19:13:18.96	44°47.99'	111°03.93'	6.7	0.9W	10	164	3	0.03
170802	19:22:20.47	44°47.17'	111°00.48'	8.8	1.3W	13	150	3	0.12
170802	19:34:50.82	44°45.91'	110°59.55'	6.3	-0.2	6	172	1	0.08
170802	19:48:57.86	44°48.31'	111°03.63'	6.3	0.9W	11	170	4	0.04
170802	19:56:40.59	44°46.70'	111°00.67'	8.0	0.8	15	143	2	0.19
170802	20:27:01.69	44°47.85'	111°04.31'	7.8	2.1W	21	148	3	0.15
170802	20:31:50.44	44°46.54'	111°00.07'	7.2	0.6	10	240	2	0.13
170802	20:40:15.18	44°46.23'	111°00.13'	7.8	1.3W	17	150	1	0.18
170802	20:47:02.95	44°48.15'	111°04.51'	7.7	1.7W	18	151	3	0.12
170802	20:47:11.84	44°48.02'	111°04.05'	6.9	2.0W	13	152	3	0.09
170802	20:55:28.65	44°46.85'	111°04.69'	5.7	0.2	10	158	3	0.13
170802	20:56:58.09	44°48.03'	111°03.93'	6.0	0.6	10	152	3	0.12
170802	21:02:41.41	44°47.01'	111°00.93'	9.3	1.4W	16	147	3	0.13
170802	21:05:10.30	44°47.80'	111°04.44'	6.7	0.9	16	147	3	0.14
170802	21:14:20.91	44°47.39'	111°00.97'	10.4	2.2W	20	152	3	0.14
170802	21:40:26.81	44°47.40'	111°00.43'	9.0	0.5	11	171	3	0.20
170802	21:56:33.15	44°47.87'	111°04.44'	7.7	1.7W	20	148	3	0.13
170802	21:59:55.43	44°45.09'	111°09.81'	1.9	0.5	6	171	7	0.21
170802	22:04:53.45	44°47.45'	111°01.01'	9.9	2.1W	19	154	4	0.13

Table 2. Earthquakes in the Yellowstone Region: July 1–September 30, 2017

DATE	ORIGIN TIME	LATITUDE	LONGITUDE	DEPTH	MAG	NO	GAP	DMN	RMS
170802	22:28:09.93	44°48.07'	111°03.68'	6.8	0.5	14	154	4	0.12
170802	22:49:15.30	44°47.66'	111°03.92'	6.7	0.3	10	184	3	0.14
170802	22:55:54.88	44°47.05'	111°00.67'	8.6	0.9W	13	148	3	0.12
170802	23:00:09.15	44°46.77'	111°01.17'	8.4	0.3	11	143	2	0.12
170802	23:25:06.75	44°47.77'	111°04.00'	7.3	1.1	21	148	3	0.15
170802	23:32:28.96	44°47.01'	111°00.82'	8.3	0.6	13	147	3	0.12
170802	23:51:46.65	44°48.14'	111°03.46'	7.5	0.6	9	200	4	0.10
170802	23:54:10.91	44°45.77'	111°01.21'	7.5	0.3	8	169	1	0.11
170802	23:58:41.12	44°48.07'	111°03.56'	6.5	0.9	12	154	4	0.13
170803	00:05:54.64	44°47.10'	111°00.80'	8.3	1.1W	13	167	3	0.16
170803	00:17:31.32	44°47.91'	111°03.24'	6.8	0.5	13	153	4	0.14
170803	00:18:17.33	44°48.26'	111°03.97'	7.8	2.8W	32	50	3	0.12
170803	00:21:28.82	44°47.86'	111°03.76'	7.8	1.6W	20	151	3	0.11
170803	00:21:45.02	44°47.39'	111°04.44'	6.4	0.8	7	150	3	0.12
170803	00:27:33.14	44°47.96'	111°04.08'	7.9	2.1W	18	151	3	0.11
170803	00:47:02.70	44°47.17'	111°00.60'	9.7	1.7W	17	150	3	0.15
170803	00:52:54.19	44°46.85'	111°00.97'	9.1	1.2W	13	145	3	0.08
170803	00:53:08.05	44°47.18'	111°00.81'	8.1	1.0	11	149	3	0.10
170803	00:56:21.83	44°48.12'	111°03.21'	7.7	0.6	6	203	4	0.05
170803	00:57:21.30	44°48.03'	111°03.75'	6.0	1.2	16	153	4	0.13
170803	01:00:32.19	44°46.70'	111°00.64'	7.4	0.4	9	185	2	0.08
170803	01:02:40.39	44°47.88'	111°03.65'	7.0	0.7	12	151	4	0.07
170803	01:04:00.77	44°46.23'	111°00.63'	7.8	0.4	14	150	1	0.15
170803	02:01:25.12	44°47.81'	111°04.25'	7.5	0.6	14	148	3	0.11
170803	02:44:21.70	44°46.32'	110°59.57'	6.9	0.3	11	189	2	0.10
170803	02:53:20.78	44°47.46'	111°00.94'	10.3	1.7W	18	154	4	0.13
170803	02:57:48.69	44°46.93'	111°00.85'	8.0	0.2	10	165	3	0.18
170803	02:58:06.68	44°46.31'	111°02.38'	7.5	0.2	7	169	3	0.14
170803	03:02:07.82	44°47.37'	111°01.09'	10.9	2.5W	24	117	3	0.13
170803	03:15:54.72	44°47.49'	111°01.32'	10.8	2.6W	22	118	4	0.12
170803	03:20:11.64	44°48.16'	111°00.62'	6.8	0.5	8	216	5	0.13
170803	03:24:48.93	44°47.09'	111°00.86'	8.8	0.7	14	149	3	0.13
170803	03:43:04.35	44°47.19'	111°01.04'	9.4	1.6W	20	150	3	0.16
170803	03:45:49.62	44°47.71'	111°04.16'	6.6	0.6	11	183	3	0.11
170803	04:14:29.74	44°47.30'	111°00.28'	9.5	0.4	15	152	3	0.19
170803	04:14:44.08	44°47.24'	111°00.54'	8.4	0.4	8	207	3	0.19
170803	04:16:53.56	44°47.34'	111°00.84'	9.9	1.4W	17	152	3	0.12
170803	04:28:08.39	44°48.06'	111°03.60'	6.6	1.4W	14	120	4	0.12
170803	04:36:04.90	44°47.32'	111°00.80'	9.7	2.0W	18	152	3	0.13
170803	04:41:17.19	44°46.23'	110°59.55'	6.8	0.1	7	187	2	0.07
170803	04:45:30.91	44°46.22'	111°01.22'	8.0	0.1	14	148	2	0.15
170803	04:46:50.68	44°48.01'	111°03.70'	7.8	1.5W	19	120	4	0.10
170803	04:50:23.45	44°47.57'	111°01.36'	10.6	1.7W	19	69	4	0.10
170803	04:51:24.20	44°47.48'	111°01.27'	10.7	2.4W	21	153	4	0.14
170803	04:54:55.52	44°46.97'	111°01.12'	9.3	0.6	13	146	3	0.14

Table 2. Earthquakes in the Yellowstone Region: July 1–September 30, 2017

DATE	ORIGIN TIME	LATITUDE	LONGITUDE	DEPTH	MAG	NO	GAP	DMN	RMS
170803	04:59:49.39	44°46.97'	111°00.91'	8.5	0.6	15	147	3	0.13
170803	05:02:52.29	44°47.28'	111°01.12'	10.9	2.0W	19	150	3	0.14
170803	05:03:23.42	44°47.59'	111°04.27'	6.4	1.1	16	145	3	0.15
170803	05:09:40.15	44°45.39'	110°59.82'	5.1	0.6	8	167	1	0.16
170803	05:33:05.27	44°47.19'	111°00.84'	8.5	0.3	14	150	3	0.14
170803	05:38:17.98	44°47.30'	111°00.60'	9.9	1.8W	19	152	3	0.12
170803	05:54:39.54	44°46.24'	111°02.25'	8.2	-0.3	7	168	3	0.05
170803	05:57:19.07	44°47.19'	111°00.75'	9.0	1.5W	19	151	3	0.15
170803	05:59:22.38	44°47.33'	111°00.88'	8.9	0.6	15	152	3	0.11
170803	06:05:38.52	44°47.41'	111°01.07'	10.1	2.2W	20	152	4	0.13
170803	06:51:32.39	44°48.09'	111°04.67'	6.1	0.7	6	185	2	0.08
170803	07:33:22.43	44°47.76'	111°04.18'	7.3	0.2	11	147	3	0.07
170803	07:36:40.63	44°47.10'	111°00.77'	7.9	0.3	8	192	3	0.09
170803	08:35:11.17	44°46.56'	111°05.59'	9.7	0.1	11	110	2	0.11
170803	09:01:51.20	44°47.13'	111°00.74'	8.9	1.0W	14	149	3	0.11
170803	09:10:27.86	44°46.76'	111°00.65'	8.3	0.4	9	198	2	0.11
170803	09:14:43.38	44°47.55'	111°00.99'	10.0	1.8W	19	154	4	0.16
170803	09:37:39.36	44°47.12'	111°01.04'	8.9	0.8	16	148	3	0.11
170803	09:57:08.41	44°47.30'	111°01.70'	10.9	2.9W	28	89	4	0.12
170803	10:32:42.31	44°47.60'	111°01.50'	11.1	2.3W	24	70	4	0.12
170803	10:35:03.79	44°46.92'	111°01.44'	8.2	0.5	14	145	3	0.15
170803	10:35:38.63	44°47.45'	111°01.49'	11.2	1.3W	17	118	4	0.10
170803	10:56:13.53	44°46.74'	111°00.69'	8.8	1.3W	19	144	2	0.15
170803	11:05:50.76	44°47.22'	111°01.16'	9.5	1.6W	20	150	3	0.16
170803	11:06:19.57	44°47.49'	111°01.06'	10.5	1.9W	17	154	4	0.14
170803	11:59:40.77	44°46.96'	111°04.01'	4.0	0.4	6	182	3	0.09
170803	12:08:13.54	44°46.39'	110°59.70'	6.8	0.1	10	179	2	0.11
170803	12:23:13.57	44°49.18'	111°02.48'	5.1	0.2	8	174	6	0.12
170803	12:24:10.55	44°48.35'	111°03.14'	5.8	0.4	9	160	4	0.07
170803	12:40:40.55	44°47.83'	111°04.58'	7.2	1.6W	19	147	2	0.11
170803	12:55:33.19	44°47.80'	111°03.91'	6.9	0.4	10	150	3	0.13
170803	13:01:25.28	44°47.74'	111°01.66'	8.3	0.6	14	156	4	0.09
170803	13:38:23.65	44°47.05'	111°01.24'	8.7	0.5	10	146	3	0.14
170803	13:48:57.18	44°43.45'	111°14.03'	5.3	1.8W	18	76	2	0.20
170803	13:54:52.58	44°46.21'	110°59.60'	6.2	0.5	7	243	2	0.07
170803	14:03:41.04	44°46.65'	111°00.11'	8.1	0.3	11	184	2	0.13
170803	14:21:27.78	44°47.83'	111°03.85'	7.8	1.3W	15	150	3	0.09
170803	14:35:55.68	44°47.30'	111°00.79'	9.3	0.7	11	151	3	0.10
170803	15:07:07.01	44°47.17'	111°01.80'	7.4	0.1	8	205	4	0.10
170803	15:15:22.68	44°46.79'	111°00.56'	8.1	0.4	13	187	2	0.13
170803	15:18:43.94	44°47.41'	111°01.85'	7.6	0.5	10	208	4	0.10
170803	16:04:35.85	44°47.06'	111°01.28'	9.2	0.3	12	147	3	0.14
170803	16:11:21.94	44°46.86'	111°00.73'	8.5	0.2	7	188	2	0.10
170803	16:13:02.39	44°47.36'	111°00.79'	10.6	1.6W	17	153	3	0.12
170803	16:19:46.38	44°47.33'	111°01.25'	10.3	2.0W	17	151	3	0.11

Table 2. Earthquakes in the Yellowstone Region: July 1–September 30, 2017

DATE	ORIGIN TIME	LATITUDE	LONGITUDE	DEPTH	MAG	NO	GAP	DMN	RMS
170803	16:32:59.43	44°45.36'	111°03.04'	7.2	-0.4	6	128	4	0.03
170803	16:34:40.52	44°47.09'	111°00.79'	8.2	-0.2	8	149	3	0.08
170803	16:48:05.95	44°46.97'	111°00.46'	7.3	1.1W	11	148	3	0.12
170803	17:40:57.32	44°46.02'	111°01.60'	7.0	0.2	7	262	2	0.14
170803	17:50:32.93	44°47.13'	111°00.65'	9.1	0.9W	10	149	3	0.02
170803	17:59:31.24	44°46.34'	111°00.86'	8.0	0.5	9	262	2	0.14
170803	18:12:29.46	44°47.45'	111°01.22'	10.2	1.1W	13	153	4	0.08
170803	18:18:57.47	44°48.13'	111°03.53'	6.1	1.8W	19	121	4	0.12
170803	18:20:01.19	44°47.89'	111°03.87'	8.0	1.8W	18	150	3	0.10
170803	18:34:15.54	44°48.27'	111°03.49'	5.8	0.8	11	158	4	0.08
170803	18:38:52.33	44°48.10'	111°04.26'	8.1	2.8W	23	120	3	0.11
170803	18:53:10.28	44°48.14'	111°03.22'	8.1	0.4	9	203	4	0.11
170803	19:03:02.82	44°47.47'	111°00.93'	7.4	0.3	8	154	4	0.09
170803	21:20:13.78	44°46.82'	111°01.75'	8.0	0.5	13	143	3	0.12
170803	21:24:09.88	44°47.97'	111°03.30'	6.3	0.7	7	199	4	0.05
170803	23:00:49.48	44°47.10'	111°00.98'	9.3	0.5	11	148	3	0.07
170803	23:34:24.82	44°48.62'	111°03.51'	5.0	0.7	10	163	4	0.09
170803	23:58:36.35	44°46.66'	110°59.60'	6.8	1.0	10	236	2	0.10
170804	00:52:38.58	44°45.85'	111°01.24'	6.5	0.9	9	177	1	0.11
170804	01:31:32.73	44°47.88'	111°04.86'	7.0	1.1W	13	146	2	0.12
170804	02:00:26.25	44°47.43'	111°01.37'	10.9	2.1W	17	152	4	0.11
170804	02:48:53.26	44°47.08'	111°00.98'	7.9	0.1	6	192	3	0.09
170804	04:55:47.81	44°47.33'	111°01.09'	10.1	1.5W	18	152	3	0.12
170804	05:02:23.62	44°47.04'	111°00.45'	6.5	0.2	8	246	3	0.09
170804	05:16:31.61	44°45.47'	111°00.13'	6.1	0.3	8	162	0	0.07
170804	05:41:58.29	44°47.01'	111°01.81'	8.3	-0.2	9	199	3	0.07
170804	05:43:57.92	44°47.85'	111°04.46'	7.2	1.1W	14	148	3	0.10
170804	06:59:09.79	44°48.30'	111°03.28'	6.9	0.5	11	159	4	0.09
170804	07:55:12.79	44°46.91'	111°01.04'	8.1	1.0W	13	163	3	0.11
170804	08:44:29.40	44°47.74'	111°04.72'	6.0	0.6	11	145	2	0.11
170804	08:45:28.46	44°47.92'	111°04.89'	7.1	1.6W	17	147	2	0.13
170804	08:56:47.23	44°46.76'	111°01.11'	8.1	0.4	11	143	2	0.13
170804	08:59:02.52	44°14.08'	110°47.17'	3.3	0.5	9	151	4	0.16
170804	10:34:08.95	44°46.48'	111°00.86'	8.5	0.1	10	183	2	0.14
170804	11:05:48.69	44°47.17'	111°00.81'	8.8	0.5	12	149	3	0.11
170804	11:23:49.03	44°47.88'	111°03.78'	7.0	0.3	9	151	3	0.07
170804	11:27:21.14	44°47.81'	111°03.44'	8.3	0.6	12	151	4	0.12
170804	12:30:05.09	44°47.35'	111°03.52'	5.9	0.8	10	168	4	0.13
170804	13:27:40.46	44°48.09'	111°03.97'	6.0	0.5	11	153	3	0.07
170804	13:44:14.41	44°47.99'	111°03.82'	8.4	1.5W	16	120	3	0.10
170804	13:50:02.05	44°47.98'	111°03.84'	8.2	1.1W	16	120	3	0.11
170804	13:55:24.37	44°47.67'	111°03.55'	7.4	0.3	12	149	4	0.09
170804	13:55:42.47	44°48.63'	111°02.64'	6.6	0.0	7	210	5	0.06
170804	14:04:49.64	44°47.76'	111°03.65'	8.0	1.3W	17	118	4	0.08
170804	14:39:48.62	44°46.26'	111°01.76'	7.8	0.4	7	287	2	0.14

Table 2. Earthquakes in the Yellowstone Region: July 1–September 30, 2017

DATE	ORIGIN TIME	LATITUDE	LONGITUDE	DEPTH	MAG	NO	GAP	DMN	RMS
170804	15:54:41.58	44°47.95'	111°03.39'	8.2	1.3W	18	154	4	0.13
170804	17:03:26.67	44°47.64'	111°03.83'	8.7	2.2W	19	148	3	0.13
170804	17:38:25.12	44°47.83'	111°03.23'	6.9	0.6	8	152	4	0.05
170804	17:41:07.97	44°47.89'	111°03.19'	6.8	0.7	7	167	6	0.06
170804	17:44:14.19	44°47.90'	111°03.89'	6.6	0.3	8	190	3	0.07
170804	17:44:43.98	44°47.93'	111°04.13'	8.1	1.4W	14	150	3	0.14
170804	17:45:11.67	44°47.84'	111°03.87'	7.6	1.4W	14	150	3	0.10
170804	18:06:06.00	44°47.84'	111°03.62'	7.9	0.8	12	151	4	0.08
170804	18:28:40.82	44°47.97'	111°03.13'	7.6	0.9W	14	155	4	0.12
170804	18:28:59.92	44°48.01'	111°03.40'	7.6	0.9W	12	154	4	0.10
170804	18:29:29.84	44°47.45'	111°04.15'	8.2	0.4	7	178	3	0.15
170804	18:48:23.84	44°47.83'	111°03.87'	8.1	0.8	11	150	3	0.06
170804	18:54:20.44	44°47.79'	111°03.24'	7.2	0.8	12	152	4	0.11
170804	19:12:10.20	44°47.74'	111°03.62'	6.9	0.5	11	163	4	0.11
170804	19:12:35.79	44°47.79'	111°04.04'	8.5	0.7	10	148	3	0.08
170804	19:13:03.55	44°47.87'	111°03.79'	8.1	1.2W	13	151	3	0.08
170804	19:24:49.78	44°46.96'	111°00.82'	8.8	1.0W	12	147	3	0.10
170804	20:16:10.01	44°47.39'	111°03.39'	6.7	0.3	7	185	4	0.07
170804	20:23:04.01	44°47.77'	111°01.13'	11.3	0.5	8	255	4	0.08
170804	20:45:22.40	44°47.12'	111°00.62'	8.4	0.7	10	149	3	0.13
170804	20:48:11.48	44°47.09'	111°00.61'	8.8	1.4W	15	149	3	0.11
170804	20:48:19.64	44°46.35'	111°01.23'	7.6	0.8	8	137	2	0.05
170804	20:48:42.87	44°46.95'	111°00.24'	8.3	1.4W	13	147	3	0.13
170804	21:07:49.37	44°47.57'	111°03.39'	7.8	0.6	8	148	4	0.05
170804	21:17:22.62	44°47.84'	111°04.15'	8.1	1.0W	13	149	3	0.13
170804	23:20:33.75	44°47.12'	111°00.54'	9.5	1.6W	15	150	3	0.11
170804	23:30:41.11	44°47.06'	111°01.44'	9.3	1.1W	13	147	3	0.14
170804	23:57:13.02	44°47.41'	111°00.82'	9.7	1.6W	13	153	3	0.11
170805	01:30:30.45	44°48.91'	111°01.47'	9.9	0.4	6	238	6	0.05
170805	03:06:08.52	44°47.92'	111°03.25'	7.0	1.1W	15	154	4	0.09
170805	04:50:34.90	44°47.04'	111°01.06'	8.7	0.1	10	147	3	0.11
170805	05:47:30.67	44°47.25'	111°04.39'	2.0	0.4	11	170	3	0.25
170805	08:16:40.34	44°47.93'	111°03.68'	9.3	1.8W	18	151	4	0.11
170805	08:26:19.55	44°48.04'	111°02.80'	10.3	0.3	6	241	5	0.07
170805	08:33:20.95	44°47.21'	111°00.72'	9.7	1.7W	18	151	3	0.10
170805	08:39:18.89	44°47.48'	111°03.84'	8.3	0.1	11	145	3	0.06
170805	09:28:57.10	44°47.94'	111°03.63'	9.3	1.5W	16	153	4	0.12
170805	09:33:24.54	44°48.39'	111°03.30'	9.8	0.4	10	205	4	0.09
170805	10:23:38.47	44°47.88'	111°03.64'	9.4	2.4W	20	151	4	0.12
170805	11:04:00.79	44°47.69'	111°03.61'	8.0	1.6W	17	149	4	0.11
170805	11:09:07.36	44°46.12'	111°02.88'	5.7	1.6W	13	130	3	0.22
170805	11:13:13.35	44°47.85'	111°03.66'	8.3	1.4W	12	151	4	0.11
170805	11:17:11.84	44°47.84'	111°04.24'	8.5	3.3W	36	93	3	0.13
170805	11:19:59.61	44°47.63'	111°03.59'	7.9	1.7W	17	148	4	0.12
170805	11:20:46.03	44°47.85'	111°03.70'	7.2	1.1W	9	164	4	0.08

Table 2. Earthquakes in the Yellowstone Region: July 1–September 30, 2017

DATE	ORIGIN TIME	LATITUDE	LONGITUDE	DEPTH	MAG	NO	GAP	DMN	RMS
170805	11:25:44.97	44°47.82'	111°03.77'	5.7	0.7W	11	150	3	0.12
170805	11:26:22.63	44°48.00'	111°04.00'	7.9	2.4W	24	120	3	0.11
170805	11:33:48.33	44°47.70'	111°03.10'	6.9	1.3W	12	151	4	0.13
170805	11:36:01.67	44°47.89'	111°03.22'	8.0	1.2W	17	153	4	0.10
170805	11:43:50.40	44°47.50'	111°03.71'	6.9	0.4	8	146	4	0.06
170805	11:48:23.63	44°47.92'	111°03.83'	6.0	0.8	8	151	3	0.10
170805	11:48:51.13	44°48.20'	111°03.54'	6.4	0.4	11	156	4	0.12
170805	11:53:34.62	44°47.76'	111°04.37'	8.3	2.6W	25	146	3	0.13
170805	11:53:43.81	44°47.89'	111°04.10'	7.8	2.4W	10	150	3	0.10
170805	11:57:30.45	44°47.87'	111°03.89'	5.7	0.9W	11	150	3	0.08
170805	11:58:26.07	44°47.68'	111°04.26'	8.3	2.4W	25	146	3	0.15
170805	12:01:15.18	44°47.89'	111°04.19'	7.9	1.3W	11	149	3	0.08
170805	12:06:50.01	44°47.93'	111°03.69'	7.3	--	9	151	4	0.09
170805	12:06:51.94	44°47.91'	111°03.75'	9.1	1.9W	18	151	3	0.13
170805	12:08:46.89	44°47.55'	111°04.03'	8.3	0.3	14	145	3	0.06
170805	12:13:17.15	44°48.45'	111°02.14'	7.9	0.1	8	165	6	0.10
170805	12:15:45.57	44°47.79'	111°03.74'	8.0	1.2W	16	150	3	0.14
170805	12:41:02.33	44°47.89'	111°03.70'	5.4	0.2	9	192	4	0.13
170805	12:41:29.84	44°47.71'	111°04.34'	6.6	0.3	13	146	3	0.11
170805	13:06:03.45	44°47.64'	111°03.19'	7.6	0.9W	14	150	4	0.07
170805	13:12:30.70	44°48.06'	111°02.74'	6.9	0.9W	12	157	5	0.13
170805	13:15:19.04	44°48.02'	111°04.00'	6.5	0.3	8	191	3	0.13
170805	13:16:52.64	44°47.54'	111°03.24'	7.4	0.3	10	190	4	0.10
170805	13:17:29.02	44°47.76'	111°03.90'	7.7	0.4	9	187	3	0.05
170805	13:19:03.20	44°47.69'	111°03.00'	7.0	0.6	10	151	4	0.10
170805	13:19:23.54	44°46.91'	111°03.57'	5.5	-0.2	9	138	5	0.23
170805	13:20:24.84	44°47.32'	111°03.17'	4.6	-0.1	10	161	4	0.08
170805	13:22:16.91	44°47.81'	111°04.30'	8.0	1.8W	19	148	3	0.11
170805	13:26:09.06	44°48.31'	111°03.90'	8.4	0.2	8	198	3	0.10
170805	13:26:26.27	44°48.07'	111°04.07'	6.5	0.7	13	152	3	0.10
170805	13:29:31.67	44°48.02'	111°04.64'	6.6	1.4W	14	150	2	0.14
170805	13:34:12.66	44°48.24'	111°03.38'	6.6	1.2W	14	158	4	0.09
170805	13:36:16.11	44°47.93'	111°03.79'	7.8	1.0W	13	151	3	0.08
170805	13:51:15.02	44°46.97'	111°03.64'	5.3	0.2	6	188	4	0.12
170805	14:14:32.22	44°48.19'	111°03.04'	8.4	0.3	7	207	4	0.04
170805	14:22:54.56	44°47.23'	111°00.86'	10.5	2.0W	18	151	3	0.13
170805	14:33:04.76	44°47.01'	111°00.68'	10.5	2.2W	21	148	3	0.15
170805	14:35:42.15	44°47.11'	111°00.44'	8.4	1.0W	14	150	3	0.16
170805	14:56:02.59	44°47.75'	111°03.15'	7.8	1.6W	15	151	4	0.08
170805	14:59:55.53	44°47.06'	111°00.89'	10.1	2.4W	16	148	3	0.12
170805	14:59:57.48	44°47.82'	111°00.55'	13.1	2.8W	14	160	8	0.14
170805	15:02:33.09	44°47.24'	111°00.73'	8.3	--	7	151	3	0.03
170805	15:02:33.62	44°47.21'	111°00.83'	8.5	1.9W	9	150	3	0.06
170805	15:04:06.76	44°46.87'	111°00.53'	9.2	1.6W	17	146	2	0.14
170805	15:04:19.99	44°47.62'	111°03.11'	7.1	1.4	13	150	4	0.12

Table 2. Earthquakes in the Yellowstone Region: July 1–September 30, 2017

DATE	ORIGIN TIME	LATITUDE	LONGITUDE	DEPTH	MAG	NO	GAP	DMN	RMS
170805	15:05:56.41	44°47.53'	111°00.91'	8.9	1.4W	12	154	4	0.14
170805	15:06:16.55	44°46.99'	111°00.73'	7.8	--	8	147	3	0.03
170805	15:06:18.81	44°47.01'	111°00.79'	5.1*	1.5W	10	147	13	0.12
170805	15:07:57.42	44°46.97'	111°00.64'	8.4	1.1W	14	147	3	0.12
170805	15:08:32.85	44°46.81'	111°00.84'	7.5	0.4	10	144	2	0.10
170805	15:10:44.90	44°40.83'	111°03.00'	14.8	0.1	8	185	9	0.10
170805	15:12:51.25	44°34.01'	110°44.92'	2.7	1.1	7	147	9	0.21
170805	15:13:03.44	44°46.32'	110°59.80'	6.7	0.2	7	232	2	0.08
170805	15:13:16.27	44°34.09'	110°45.66'	2.7	0.8	7	105	9	0.12
170805	15:18:44.91	44°46.97'	111°00.65'	8.8	0.2	10	147	3	0.11
170805	15:18:54.72	44°46.76'	111°00.25'	7.9	0.3	8	165	2	0.11
170805	15:20:10.87	44°33.24'	110°46.15'	-1.9	1.4W	8	114	10	0.15
170805	15:26:06.94	44°47.20'	111°00.43'	9.2	1.1W	14	151	3	0.10
170805	15:27:35.72	44°45.30'	110°56.12'	7.2	0.2	6	146	6	0.05
170805	15:27:53.67	44°46.93'	111°00.52'	8.8	1.1W	12	146	3	0.11
170805	15:28:02.55	44°46.87'	111°00.68'	9.0	1.7W	11	146	2	0.05
170805	15:35:48.55	44°47.94'	111°04.16'	8.1	0.3	7	188	3	0.08
170805	15:54:19.08	44°48.10'	111°03.04'	8.1	0.1	11	157	4	0.08
170805	15:55:07.33	44°47.13'	111°00.75'	10.5	2.6W	20	149	3	0.14
170805	15:56:39.45	44°47.02'	111°00.73'	9.8	2.3W	19	148	3	0.13
170805	15:58:53.49	44°46.67'	111°00.68'	7.5	0.7	9	143	2	0.10
170805	16:02:45.11	44°47.13'	111°00.64'	10.1	2.0W	17	149	3	0.13
170805	16:03:58.44	44°47.36'	111°00.36'	10.5	1.9W	18	153	3	0.15
170805	16:04:36.29	44°46.83'	111°00.59'	8.3	1.2W	17	146	2	0.15
170805	16:07:03.77	44°46.98'	111°00.89'	9.6	2.0W	18	147	3	0.13
170805	16:14:32.11	44°47.37'	111°00.78'	9.1	1.4W	18	153	3	0.17
170805	16:15:41.40	44°46.83'	111°00.26'	7.5	0.9W	17	145	2	0.14
170805	16:16:12.32	44°46.86'	111°00.37'	7.9	1.3W	15	146	2	0.15
170805	16:23:44.86	44°47.23'	111°00.55'	9.3	2.2W	19	151	3	0.17
170805	16:24:37.90	44°47.90'	111°03.43'	7.9	1.2W	15	152	4	0.10
170805	16:25:27.78	44°46.87'	111°00.65'	8.9	0.4	11	146	2	0.08
170805	16:30:45.35	44°45.76'	111°00.77'	7.9	1.4W	16	130	1	0.15
170805	16:32:19.89	44°47.22'	111°00.49'	9.1	1.2W	16	151	3	0.12
170805	16:35:52.48	44°46.86'	111°00.34'	8.4	0.2	11	146	2	0.12
170805	16:45:29.21	44°48.07'	111°03.51'	7.8	1.1W	13	154	4	0.07
170805	16:50:21.20	44°47.76'	111°04.16'	9.1	1.8W	14	147	3	0.10
170805	16:53:06.63	44°46.55'	111°00.34'	7.9	0.3	9	194	2	0.12
170805	16:53:53.34	44°46.90'	111°00.99'	7.7	0.3	11	145	3	0.06
170805	16:57:50.92	44°47.55'	111°04.29'	8.5	2.7W	24	144	3	0.14
170805	17:04:52.38	44°47.71'	111°03.80'	8.1	1.6W	16	148	3	0.10
170805	17:15:06.58	44°47.95'	111°03.58'	8.2	0.8W	13	153	4	0.06
170805	17:36:00.67	44°47.29'	111°01.13'	10.5	2.7W	23	150	3	0.14
170805	17:40:05.34	44°47.13'	111°01.15'	8.3	1.0W	11	148	3	0.09
170805	17:43:47.51	44°47.77'	111°03.37'	7.1	0.8	12	150	4	0.11
170805	17:43:58.34	44°47.79'	111°03.25'	7.6	0.7	14	152	4	0.12

Table 2. Earthquakes in the Yellowstone Region: July 1–September 30, 2017

DATE	ORIGIN TIME	LATITUDE	LONGITUDE	DEPTH	MAG	NO	GAP	DMN	RMS
170805	17:45:01.09	44°46.52'	111°00.28'	7.8	0.5	12	183	2	0.14
170805	17:53:54.69	44°47.65'	111°03.85'	7.9	2.0W	16	148	3	0.12
170805	18:04:36.51	44°47.63'	111°03.23'	8.1	2.8W	24	150	4	0.13
170805	18:05:22.42	44°46.92'	111°03.72'	6.5	0.9	16	138	4	0.12
170805	18:05:34.74	44°47.50'	111°02.83'	6.1	0.9	9	164	5	0.10
170805	18:07:24.80	44°48.01'	111°03.07'	7.8	0.9	15	155	4	0.10
170805	18:08:50.77	44°49.50'	111°01.88'	9.9	0.2	6	240	7	0.05
170805	18:21:47.32	44°48.52'	111°03.66'	9.0	0.5	7	205	4	0.16
170805	18:43:36.82	44°47.49'	111°00.96'	10.1	1.5W	15	154	4	0.15
170805	18:51:56.75	44°47.10'	111°00.23'	7.9	0.8W	15	168	3	0.14
170805	18:55:42.51	44°47.80'	111°02.95'	7.6	0.8W	12	153	5	0.11
170805	19:03:39.34	44°47.89'	111°02.77'	8.0	1.2W	13	154	5	0.09
170805	19:07:44.28	44°47.96'	111°03.36'	6.0	0.6	9	154	4	0.07
170805	19:12:37.11	44°49.07'	111°00.26'	0.9	1.0W	9	180	7	0.46
170805	19:13:44.40	44°47.04'	111°00.69'	8.4	0.4	12	148	3	0.08
170805	19:18:24.90	44°46.83'	111°00.81'	8.0	0.5	9	199	2	0.11
170805	19:19:12.83	44°47.25'	111°03.65'	7.1	0.5	10	157	4	0.07
170805	19:20:37.37	44°46.76'	111°00.82'	9.1	0.7W	7	144	2	0.05
170805	19:20:55.70	44°46.80'	111°00.59'	8.2	0.4W	7	145	2	0.06
170805	19:21:22.86	44°46.75'	110°59.76'	7.0	-0.5	7	145	2	0.11
170805	19:22:15.11	44°47.05'	111°00.45'	8.5	1.0W	13	148	3	0.11
170805	19:41:43.95	44°47.22'	111°00.66'	10.1	1.6W	16	151	3	0.13
170805	19:44:35.55	44°47.18'	111°02.59'	7.6	1.2W	13	146	4	0.12
170805	19:44:44.57	44°46.51'	111°00.15'	7.8	1.1	9	182	2	0.11
170805	19:45:55.29	44°47.26'	111°02.99'	8.1	1.7W	13	145	5	0.11
170805	19:50:26.65	44°46.87'	111°00.73'	9.4	1.6W	18	146	2	0.13
170805	19:59:29.61	44°47.85'	111°01.98'	7.6	0.5	8	216	5	0.06
170805	20:03:35.17	44°47.14'	111°00.43'	8.7	1.2W	16	150	3	0.14
170805	20:06:34.35	44°46.69'	110°58.95'	5.1	-0.3	10	183	3	0.20
170805	20:06:42.02	44°46.17'	111°00.70'	7.3	-0.1	10	178	1	0.19
170805	20:06:54.12	44°46.59'	111°00.41'	7.0	0.4	12	183	2	0.14
170805	20:09:51.84	44°46.60'	110°59.97'	7.9	0.8W	10	143	2	0.10
170805	20:10:57.58	44°46.54'	111°00.01'	6.9	0.3W	8	142	2	0.12
170805	20:11:14.42	44°46.92'	111°00.35'	8.1	0.8W	8	147	12	0.08
170805	20:34:35.08	44°47.19'	111°00.53'	9.6	1.2W	13	151	3	0.11
170805	20:36:21.69	44°47.21'	111°03.94'	6.0	0.1	8	161	3	0.08
170805	20:36:28.54	44°45.77'	111°01.35'	6.4	1.1W	9	138	1	0.08
170805	20:38:01.34	44°46.99'	111°00.36'	7.6	1.1W	14	148	3	0.11
170805	20:42:06.17	44°46.93'	111°00.84'	9.8	1.7W	18	146	3	0.12
170805	20:44:45.63	44°46.87'	111°00.51'	8.9	1.4W	18	146	2	0.14
170805	20:45:03.13	44°45.96'	111°00.68'	6.2	0.2	7	133	1	0.01
170805	20:45:36.37	44°47.06'	111°00.76'	10.0	2.2W	20	148	3	0.13
170805	20:52:09.37	44°46.80'	111°00.50'	7.8	1.1W	13	145	2	0.09
170805	20:52:43.91	44°47.10'	111°04.85'	2.0	0.4	7	162	7	0.10
170805	20:58:00.01	44°47.20'	111°00.70'	9.1	1.5W	16	151	3	0.14

Table 2. Earthquakes in the Yellowstone Region: July 1–September 30, 2017

DATE	ORIGIN TIME	LATITUDE	LONGITUDE	DEPTH	MAG	NO	GAP	DMN	RMS
170805	21:05:01.55	44°46.72'	111°00.61'	7.8	1.3W	13	144	2	0.12
170805	21:19:59.57	44°46.66'	111°00.55'	7.5	0.4	9	196	2	0.06
170805	22:02:03.13	44°47.89'	111°03.75'	7.9	1.1W	15	151	3	0.10
170805	22:18:29.10	44°48.08'	111°04.30'	6.3	0.7W	12	151	3	0.05
170805	22:20:10.41	44°46.94'	111°00.40'	8.2	1.2W	16	147	3	0.14
170805	22:20:32.33	44°46.69'	111°00.40'	7.6	0.0	11	143	2	0.14
170805	22:20:50.78	44°46.52'	111°00.56'	7.4	1.1W	13	141	2	0.14
170805	22:25:00.44	44°47.91'	111°04.70'	6.8	0.9	8	181	2	0.10
170805	22:32:35.46	44°45.89'	110°58.50'	3.8	-0.3	7	169	3	0.03
170805	22:32:49.90	44°46.50'	111°00.33'	8.5	0.9W	11	182	2	0.07
170805	22:33:09.86	44°44.89'	111°00.03'	8.6	0.4W	7	119	1	0.24
170805	22:39:20.29	44°47.88'	111°02.99'	7.7	1.2W	10	167	4	0.07
170805	22:47:07.75	44°47.02'	111°00.92'	9.3	1.0W	12	147	3	0.07
170805	22:48:15.16	44°47.04'	111°00.12'	8.8	0.6W	8	149	3	0.15
170805	22:49:18.75	44°47.16'	111°02.39'	7.7	1.0W	14	145	4	0.12
170805	22:51:56.75	44°47.31'	111°00.74'	9.9	1.8W	17	152	3	0.13
170805	22:54:02.42	44°47.87'	111°02.55'	7.7	0.7	15	155	5	0.16
170805	23:08:47.17	44°47.06'	111°00.49'	9.1	1.1W	14	148	3	0.14
170805	23:20:39.95	44°47.11'	111°00.41'	8.2	1.1W	12	150	3	0.15
170805	23:26:50.25	44°47.50'	111°03.12'	7.6	0.8W	13	148	4	0.05
170805	23:29:49.83	44°46.58'	111°01.10'	7.2	0.1	10	141	2	0.06
170805	23:30:50.78	44°46.51'	111°00.40'	8.3	-0.2	9	141	2	0.09
170805	23:32:46.37	44°47.53'	111°03.01'	6.3	0.8	12	149	4	0.13
170805	23:45:50.60	44°48.14'	111°03.79'	7.4	0.6	7	155	3	0.04
170806	00:09:48.39	44°48.01'	111°03.38'	8.0	1.5W	17	154	4	0.11
170806	00:33:14.31	44°48.15'	111°04.23'	5.1	0.4	11	153	3	0.10
170806	00:52:26.21	44°46.47'	111°00.65'	7.2	0.3	11	242	2	0.12
170806	00:55:29.17	44°47.11'	111°00.47'	8.6	0.9	16	150	3	0.15
170806	02:42:26.42	44°43.96'	110°46.21'	5.1	0.8	13	142	5	0.17
170806	03:01:57.78	44°47.67'	111°02.86'	7.8	1.3W	17	151	5	0.13
170806	03:05:53.30	44°47.58'	111°02.74'	6.7	0.6	12	150	5	0.14
170806	03:31:00.01	44°47.53'	111°03.25'	7.3	0.4	9	148	4	0.07
170806	03:34:33.69	44°46.95'	111°00.30'	8.5	1.3W	17	147	3	0.13
170806	03:39:16.78	44°42.66'	110°45.62'	2.8	-0.2	6	159	6	0.15
170806	03:39:30.46	44°48.07'	111°02.57'	7.8	0.6	10	158	5	0.11
170806	03:40:18.44	44°48.08'	111°02.67'	4.8	0.3	10	158	5	0.15
170806	04:11:32.57	44°47.82'	111°04.10'	7.1	0.2	10	149	3	0.06
170806	04:15:21.75	44°46.84'	111°05.09'	10.3	1.6W	17	131	2	0.17
170806	04:16:54.67	44°46.50'	111°04.77'	9.9	0.6	15	127	3	0.18
170806	04:23:54.64	44°46.59'	111°05.07'	8.4	0.8W	13	123	3	0.11
170806	04:26:24.92	44°46.71'	111°05.26'	10.4	1.5W	14	123	2	0.11
170806	04:50:21.16	44°47.87'	111°02.57'	7.8	0.3	9	154	5	0.11
170806	04:51:09.89	44°47.30'	111°02.80'	8.0	1.2W	14	146	5	0.10
170806	05:02:51.07	44°46.40'	110°59.87'	7.6	0.2	9	191	2	0.08
170806	05:10:15.99	44°46.92'	111°00.77'	8.6	1.0W	12	146	3	0.13

Table 2. Earthquakes in the Yellowstone Region: July 1–September 30, 2017

DATE	ORIGIN TIME	LATITUDE	LONGITUDE	DEPTH	MAG	NO	GAP	DMN	RMS
170806	05:10:56.17	44°47.76'	111°03.58'	6.7	0.2	12	149	4	0.17
170806	05:14:20.38	44°47.10'	111°00.50'	9.0	1.3W	19	150	3	0.14
170806	05:40:45.81	44°46.88'	111°05.17'	11.1	1.4W	16	131	2	0.13
170806	05:47:45.60	44°46.77'	111°05.57'	10.7	0.4	11	116	2	0.13
170806	05:54:36.48	44°47.30'	111°01.07'	9.1	1.4W	18	150	3	0.14
170806	06:31:49.98	44°47.23'	111°02.97'	7.3	0.5	10	187	5	0.10
170806	07:23:45.67	44°46.13'	110°59.29'	6.4	0.0	9	204	2	0.12
170806	07:48:40.10	44°47.80'	111°03.64'	7.3	0.6	12	151	4	0.09
170806	07:52:22.54	44°48.86'	111°02.51'	7.3	0.5W	7	179	5	0.06
170806	07:57:01.55	44°47.88'	111°03.59'	8.0	0.6	13	151	4	0.07
170806	08:10:32.93	44°46.58'	111°00.62'	7.0	0.6W	8	141	2	0.08
170806	08:11:06.78	44°47.59'	111°02.32'	5.8	0.3	8	166	5	0.08
170806	08:12:21.84	44°47.57'	111°03.58'	7.9	0.3	9	187	4	0.12
170806	08:47:27.94	44°48.02'	111°03.74'	7.9	2.0W	21	153	4	0.12
170806	09:04:38.33	44°48.13'	111°03.14'	5.9	0.7	12	157	4	0.11
170806	09:06:54.68	44°48.15'	111°03.22'	8.3	0.2	9	203	4	0.05
170806	09:49:17.82	44°47.80'	111°02.51'	6.5	0.4	10	183	5	0.08
170806	10:10:00.85	44°46.76'	111°00.24'	8.8	1.4W	20	145	2	0.17
170806	10:46:45.69	44°48.14'	111°02.64'	7.4	0.3	9	158	5	0.09
170806	10:54:20.02	44°47.23'	111°00.59'	8.9	1.0W	16	104	3	0.17
170806	12:04:31.04	44°48.05'	111°03.89'	7.2	2.5W	25	153	3	0.11
170806	12:15:14.14	44°48.04'	111°03.64'	6.3	1.2W	17	154	4	0.12
170806	12:19:51.25	44°48.04'	111°03.55'	6.6	0.8	15	154	4	0.14
170806	12:27:41.59	44°45.30'	111°00.06'	7.1	-0.1	8	112	1	0.11
170806	12:33:39.05	44°47.74'	111°03.18'	7.3	0.8W	11	151	4	0.09
170806	13:59:44.84	44°47.48'	111°04.07'	7.2	0.2	8	145	3	0.06
170806	14:13:14.41	44°44.86'	110°59.62'	6.7	0.1	6	126	2	0.09
170806	14:47:59.67	44°47.57'	111°03.11'	7.8	0.6	12	149	4	0.07
170806	14:48:14.14	44°47.64'	111°02.90'	7.6	0.4	13	151	5	0.08
170806	14:51:23.49	44°47.09'	111°02.95'	6.9	0.3	7	162	4	0.10
170806	15:28:22.36	44°47.76'	111°03.10'	7.8	0.2	6	227	4	0.07
170806	17:54:15.47	44°46.61'	111°00.35'	8.7	0.6W	10	143	2	0.08
170806	18:47:24.26	44°47.44'	111°02.60'	8.0	0.2	8	148	5	0.06
170806	19:41:29.46	44°46.37'	111°00.22'	7.4	0.5	9	180	2	0.12
170806	20:29:46.55	44°47.83'	111°05.05'	7.7	0.3	7	176	2	0.13
170806	20:58:16.45	44°48.15'	111°04.25'	7.3	2.2W	17	153	3	0.12
170806	21:02:09.61	44°47.95'	111°04.06'	5.8	0.7	10	150	3	0.11
170806	21:03:41.25	44°48.30'	111°03.99'	6.7	1.7W	14	157	3	0.11
170806	21:51:09.26	44°47.59'	111°03.28'	7.8	2.5W	19	148	4	0.11
170806	22:15:19.74	44°48.08'	111°03.16'	7.5	1.8W	14	156	4	0.10
170806	22:18:21.10	44°47.68'	111°03.36'	6.8	0.1	7	150	4	0.05
170806	22:44:53.38	44°48.10'	111°02.76'	6.7	0.5W	8	158	6	0.07
170806	23:54:44.57	44°47.98'	111°03.03'	7.0	1.0W	15	155	4	0.14
170807	00:07:42.89	44°48.10'	111°03.55'	6.5	0.8	14	155	4	0.13
170807	00:19:21.78	44°48.07'	111°03.90'	6.9	0.3	9	193	3	0.06

Table 2. Earthquakes in the Yellowstone Region: July 1–September 30, 2017

DATE	ORIGIN TIME	LATITUDE	LONGITUDE	DEPTH	MAG	NO	GAP	DMN	RMS
170807	00:20:55.08	44°48.04'	111°04.21'	7.3	2.1W	21	151	3	0.13
170807	00:46:41.27	44°47.70'	111°03.99'	6.6	0.3	10	147	3	0.11
170807	01:13:11.23	44°46.61'	111°00.46'	8.1	0.0	9	143	2	0.10
170807	01:40:00.65	44°47.89'	111°04.55'	7.8	2.0W	17	148	2	0.12
170807	02:00:00.59	44°47.89'	111°04.52'	7.7	1.7W	15	148	2	0.11
170807	02:17:12.58	44°48.38'	111°03.40'	5.1	0.2	7	204	4	0.06
170807	03:52:48.49	44°47.89'	111°03.14'	7.5	0.8W	13	153	4	0.06
170807	04:05:17.94	44°47.15'	111°02.06'	8.1	0.8W	8	146	4	0.05
170807	04:09:48.66	44°48.33'	111°03.26'	5.8	0.1	8	204	4	0.05
170807	04:27:56.38	44°47.91'	111°03.66'	7.8	1.3W	18	151	4	0.13
170807	04:50:44.43	44°48.53'	111°02.28'	4.2	0.3	8	165	6	0.13
170807	06:27:59.17	44°46.44'	111°02.50'	8.6	0.7W	13	135	3	0.12
170807	06:30:49.20	44°46.25'	111°01.89'	8.4	0.6W	9	155	2	0.10
170807	07:03:50.53	44°47.90'	111°02.66'	7.8	0.5	13	121	5	0.09
170807	07:38:21.41	44°46.63'	111°00.50'	9.7	0.8W	13	143	2	0.09
170807	08:09:31.36	44°47.14'	110°59.60'	9.0	0.3	11	170	3	0.10
170807	08:19:23.18	44°47.08'	111°00.45'	9.6	1.3W	18	150	3	0.15
170807	09:39:57.87	44°46.86'	111°00.63'	8.4	0.8	11	188	2	0.11
170807	10:01:37.99	44°48.17'	111°02.54'	7.7	0.5	17	159	5	0.13
170807	10:29:40.37	44°46.91'	111°00.57'	9.0	1.0W	14	146	3	0.14
170807	10:31:49.84	44°46.92'	111°00.39'	8.6	1.1W	15	188	3	0.17
170807	10:39:42.43	44°47.05'	111°00.23'	8.5	1.0W	15	149	3	0.17
170807	10:42:01.24	44°46.97'	111°00.62'	9.4	1.5W	20	147	3	0.16
170807	12:36:14.63	44°48.08'	111°02.95'	8.1	0.6	12	157	5	0.11
170807	14:07:05.04	44°47.93'	111°03.34'	8.3	2.0W	19	154	4	0.15
170807	14:08:00.45	44°47.71'	111°03.20'	7.9	1.1W	20	150	4	0.13
170807	14:08:09.74	44°47.63'	111°03.07'	7.8	2.6W	22	150	4	0.13
170807	14:12:25.58	44°47.93'	111°04.35'	7.8	2.0W	19	149	3	0.12
170807	14:12:51.92	44°47.47'	111°04.17'	5.4	1.0	11	143	3	0.14
170807	14:19:38.49	44°46.67'	111°00.35'	8.3	0.7W	10	185	2	0.08
170807	14:19:42.85	44°46.11'	111°00.24'	8.9	0.5W	7	176	1	0.21
170807	14:24:24.23	44°47.91'	111°03.01'	7.9	0.3	6	187	4	0.08
170807	14:27:42.20	44°47.68'	111°04.29'	6.4	0.9	13	146	3	0.13
170807	14:28:39.63	44°47.84'	111°02.96'	7.2	0.9W	12	153	5	0.13
170807	14:39:56.26	44°47.74'	111°04.22'	7.3	1.5W	19	147	3	0.13
170807	15:26:33.64	44°48.21'	111°03.80'	5.7	0.2	9	155	4	0.09
170807	15:37:04.38	44°47.66'	111°02.99'	7.9	1.7W	19	151	4	0.13
170807	15:53:00.27	44°38.33'	110°44.00'	6.1	0.5	6	140	8	0.07
170807	15:55:16.50	44°47.99'	111°04.54'	7.8	2.2W	17	149	2	0.11
170807	15:58:58.80	44°47.41'	111°03.20'	4.5	0.3	8	171	4	0.08
170807	16:01:14.62	44°48.03'	111°04.09'	6.7	0.7	11	152	3	0.09
170807	16:19:00.61	44°47.75'	111°02.58'	7.8	0.9W	14	154	5	0.11
170807	16:19:20.15	44°47.37'	111°02.99'	7.8	-0.2	7	191	5	0.12
170807	16:21:59.80	44°48.20'	111°03.54'	6.5	0.2	8	200	4	0.11
170807	16:35:04.54	44°38.54'	110°44.39'	5.6	0.5	9	136	9	0.11

Table 2. Earthquakes in the Yellowstone Region: July 1–September 30, 2017

DATE	ORIGIN TIME	LATITUDE	LONGITUDE	DEPTH	MAG	NO	GAP	DMN	RMS
170807	16:50:35.89	44°47.47'	111°00.47'	10.4	1.8W	15	155	4	0.14
170807	17:02:11.07	44°48.41'	111°04.50'	5.8	1.1W	10	156	3	0.09
170807	17:05:22.40	44°46.95'	111°00.82'	9.7	1.4W	15	147	3	0.15
170807	17:05:55.75	44°47.23'	111°00.74'	8.9	0.8	14	151	3	0.14
170807	17:43:00.90	44°47.66'	111°02.74'	8.8	0.8W	14	151	5	0.12
170807	18:42:57.06	44°48.46'	111°03.46'	6.6	0.5	8	161	4	0.03
170807	21:17:27.61	44°47.28'	111°01.03'	6.9	0.6	8	250	3	0.06
170807	21:32:25.05	44°43.73'	111°14.19'	4.4	0.7	7	120	2	0.07
170807	23:03:45.15	44°47.56'	111°02.41'	4.7	0.7	6	201	5	0.07
170807	23:27:21.45	44°43.62'	111°14.40'	5.3	1.5W	14	129	2	0.15
170808	00:04:37.97	44°47.64'	111°02.85'	7.2	0.4	9	151	5	0.13
170808	01:05:35.63	44°38.81'	110°45.52'	5.9	0.2	10	131	8	0.09
170808	01:06:08.05	44°15.69'	110°58.08'	9.9	0.6	7	140	13	0.12
170808	01:47:00.66	44°48.43'	111°03.24'	9.3	0.3	7	208	4	0.10
170808	03:24:42.79	44°47.91'	111°02.79'	7.7	0.4	8	155	5	0.12
170808	03:51:01.17	44°47.20'	111°00.24'	8.5	0.2	11	152	3	0.11
170808	03:55:10.65	44°47.77'	111°03.03'	6.3	0.3	7	198	4	0.06
170808	05:24:53.11	44°47.48'	111°02.13'	8.4	0.1	8	202	4	0.08
170808	05:35:06.79	44°47.81'	111°02.97'	7.8	1.0W	12	153	5	0.08
170808	05:43:53.95	44°47.75'	111°02.61'	6.1	0.3	11	153	5	0.13
170808	06:45:35.46	44°47.43'	111°03.00'	8.9	1.5W	16	147	5	0.13
170808	07:04:58.62	44°47.39'	111°00.82'	10.9	1.6W	15	153	3	0.14
170808	07:08:34.29	44°47.71'	111°01.86'	8.7	0.4	9	205	4	0.09
170808	07:18:21.67	44°47.57'	111°03.25'	6.9	0.6	10	191	4	0.13
170808	09:21:09.61	44°47.07'	111°02.89'	6.5	0.4	7	162	4	0.11
170808	09:34:11.56	44°47.20'	111°02.40'	7.4	0.4	10	146	4	0.12
170808	10:42:13.33	44°47.06'	111°00.77'	8.9	1.4W	18	148	3	0.15
170808	13:43:00.27	44°24.88'	111°01.62'	13.9	1.0W	7	271	16	0.20
170808	14:03:47.58	44°47.15'	111°00.50'	9.1	1.8W	19	150	3	0.14
170808	14:11:37.35	44°46.76'	111°00.46'	7.3	0.5	9	197	2	0.10
170808	14:15:48.41	44°46.77'	111°00.06'	8.2	0.5	9	217	2	0.14
170808	14:42:42.50	44°46.85'	111°00.58'	8.5	1.3W	14	146	2	0.16
170808	16:22:02.94	44°47.83'	111°04.37'	6.3	1.1W	17	148	3	0.18
170808	18:59:54.75	44°47.49'	111°02.55'	6.6	0.6	13	150	5	0.15
170808	21:23:31.29	44°47.65'	111°03.03'	6.7	1.0	12	150	4	0.10
170808	22:52:10.67	44°47.53'	111°02.62'	6.7	0.3	8	199	5	0.12
170808	23:19:12.01	44°45.65'	111°10.69'	7.0	0.0	8	125	2	0.11
170808	23:19:29.00	44°47.40'	111°02.41'	5.8	0.4W	7	165	4	0.10
170809	02:15:14.58	44°50.14'	110°56.27'	11.6	0.4	6	207	10	0.20
170809	02:27:29.01	44°45.51'	111°10.90'	8.1	0.6	11	126	1	0.14
170809	05:09:12.86	44°47.36'	111°02.91'	6.6	0.9	15	147	5	0.12
170809	05:31:17.28	44°46.58'	111°00.56'	9.0	0.6	10	183	2	0.14
170809	05:54:21.29	44°45.55'	111°11.14'	11.0	1.3W	18	71	1	0.16
170809	05:54:54.42	44°45.58'	111°10.97'	8.7	0.6	12	67	1	0.14
170809	06:35:28.51	44°45.61'	111°11.20'	10.4	0.8	14	144	1	0.17

Table 2. Earthquakes in the Yellowstone Region: July 1–September 30, 2017

DATE	ORIGIN TIME	LATITUDE	LONGITUDE	DEPTH	MAG	NO	GAP	DMN	RMS
170809	06:43:47.06	44°47.55'	111°02.95'	7.4	0.6	14	149	5	0.08
170809	07:12:41.95	44°47.56'	111°02.39'	7.0	0.4	8	204	5	0.17
170809	07:43:08.06	44°46.29'	111°11.51'	9.8	0.1	6	246	2	0.11
170809	10:35:16.34	44°47.99'	111°04.09'	6.9	1.4W	20	151	3	0.11
170809	11:02:52.34	44°46.23'	111°10.97'	8.9	0.1	6	241	2	0.11
170809	11:25:01.11	44°47.24'	111°00.66'	10.6	2.0W	21	151	3	0.13
170809	12:19:29.87	44°47.64'	111°02.81'	7.3	1.3W	19	151	5	0.10
170809	12:23:12.00	44°47.07'	111°02.93'	6.0	0.2	7	195	4	0.12
170809	13:57:23.61	44°47.57'	111°02.77'	5.8	0.4	8	198	5	0.13
170809	14:05:39.10	44°47.70'	111°02.87'	7.4	1.3W	16	151	5	0.11
170809	14:22:56.11	44°47.53'	111°02.72'	6.5	0.8	14	150	5	0.13
170809	14:28:44.21	44°44.45'	110°47.80'	5.5	0.9W	7	144	7	0.08
170809	14:35:19.45	44°48.66'	111°00.86'	8.6	0.5	7	244	6	0.04
170809	14:45:42.56	44°47.79'	111°02.41'	7.3	0.7W	11	154	5	0.06
170809	14:48:12.39	44°48.21'	111°01.70'	8.2	0.4	9	175	5	0.09
170809	14:57:32.51	44°47.73'	111°02.73'	6.7	1.2W	14	152	5	0.08
170809	16:30:36.87	44°47.62'	111°02.87'	8.0	2.3W	16	151	5	0.12
170809	16:47:16.19	44°47.64'	111°02.82'	7.8	2.1W	15	151	5	0.13
170809	16:49:00.41	44°47.86'	111°02.32'	6.8	1.1W	14	155	5	0.13
170809	17:39:12.72	44°47.93'	111°02.33'	7.1	1.1W	15	157	5	0.09
170809	17:43:50.77	44°47.82'	111°02.43'	7.8	0.9	15	154	5	0.15
170809	17:49:10.14	44°47.65'	111°02.85'	6.8	1.5W	17	151	5	0.13
170809	18:25:50.67	44°47.65'	111°02.60'	7.1	1.5W	18	152	5	0.14
170809	18:31:27.44	44°47.73'	111°02.56'	6.3	0.6	11	152	5	0.14
170809	18:38:22.52	44°47.82'	111°02.47'	7.4	0.8	12	168	5	0.09
170809	19:08:10.29	44°47.88'	111°02.47'	7.2	0.7	15	155	5	0.13
170809	19:18:48.03	44°48.22'	111°02.00'	7.9	0.8	8	210	5	0.09
170809	19:32:00.41	44°48.53'	111°01.73'	8.7	0.7	9	214	6	0.10
170809	19:42:37.24	44°45.88'	111°02.52'	3.0	0.8	6	156	3	0.15
170809	19:49:27.37	44°47.86'	111°02.27'	7.1	0.7	15	155	5	0.12
170809	19:52:23.81	44°47.60'	111°02.49'	4.9	1.0W	14	152	5	0.12
170809	21:07:54.55	44°47.60'	111°02.46'	6.4	1.5W	15	152	5	0.13
170809	21:17:05.36	44°47.56'	111°02.63'	8.6	2.3W	24	150	5	0.16
170809	21:19:10.84	44°47.88'	111°01.58'	5.1	0.7	9	172	5	0.22
170809	21:23:03.82	44°47.82'	111°02.54'	6.7	0.4	7	154	5	0.15
170809	21:27:33.65	44°47.48'	111°02.25'	4.8	0.4	9	201	4	0.16
170809	21:58:20.50	44°47.39'	111°02.35'	5.8	1.1W	16	165	4	0.16
170809	22:03:11.31	44°47.34'	111°02.04'	6.5	0.5	11	149	4	0.15
170809	22:15:22.29	44°47.45'	111°03.17'	6.1	0.7	9	190	4	0.12
170809	22:54:42.28	44°46.64'	111°02.18'	4.4	0.6	10	157	3	0.12
170809	23:45:04.36	44°47.35'	111°00.85'	9.9	0.6	12	196	3	0.09
170809	23:55:35.09	44°47.64'	111°02.67'	4.9	0.6	8	151	5	0.04
170809	23:59:41.04	44°47.61'	111°02.84'	6.6	1.7W	16	151	5	0.13
170810	00:01:35.67	44°47.53'	111°02.69'	6.9	1.1W	16	150	5	0.16
170810	00:14:03.54	44°46.68'	111°00.83'	9.4	0.4W	7	142	2	0.12

Table 2. Earthquakes in the Yellowstone Region: July 1–September 30, 2017

DATE	ORIGIN TIME	LATITUDE	LONGITUDE	DEPTH	MAG	NO	GAP	DMN	RMS
170810	00:14:22.79	44°47.81'	111°01.36'	5.6	0.7W	10	157	4	0.06
170810	00:23:21.17	44°47.69'	111°03.17'	6.5	0.2	9	194	4	0.11
170810	00:23:42.02	44°47.82'	111°01.88'	5.3	0.3	7	206	5	0.10
170810	00:29:54.46	44°47.24'	111°00.71'	9.5	1.6W	18	151	3	0.13
170810	00:46:35.80	44°47.66'	111°02.68'	8.0	1.4W	17	152	5	0.14
170810	01:01:11.20	44°47.40'	111°02.31'	7.5	2.1W	20	149	4	0.13
170810	01:02:44.05	44°47.06'	111°01.98'	5.7	1.1W	13	145	3	0.08
170810	01:03:11.30	44°47.36'	111°01.89'	3.7	0.8W	13	150	4	0.19
170810	01:23:45.29	44°47.43'	111°02.61'	8.0	0.7	15	148	5	0.15
170810	01:59:53.23	44°47.58'	111°02.03'	5.5	0.6	12	152	4	0.11
170810	02:01:28.67	44°47.75'	111°03.11'	6.8	0.5	13	151	4	0.11
170810	02:05:12.06	44°26.87'	110°57.24'	3.3	0.9W	9	114	9	0.08
170810	02:06:00.63	44°27.06'	110°56.87'	3.8	0.8	9	112	9	0.12
170810	02:28:43.33	44°47.85'	111°02.34'	6.2	0.4	9	204	5	0.11
170810	02:36:13.40	44°47.14'	111°00.73'	9.5	0.6W	10	149	3	0.08
170810	02:42:38.43	44°46.63'	111°02.27'	4.2	0.4	5	196	3	0.05
170810	03:53:28.78	44°46.94'	111°02.19'	5.5	1.2W	16	143	4	0.17
170810	04:32:10.70	44°47.28'	111°02.75'	4.3	0.6	6	192	4	0.16
170810	05:26:44.15	44°47.15'	111°01.89'	4.2	0.2	6	166	4	0.05
170810	05:33:14.61	44°47.82'	111°02.70'	8.0	1.3W	16	154	5	0.15
170810	05:39:45.19	44°47.25'	111°03.49'	5.4	0.6W	10	143	4	0.20
170810	05:39:51.72	44°47.53'	111°02.57'	6.8	1.4W	10	150	5	0.14
170810	05:43:04.74	44°47.72'	111°02.96'	8.0	2.0W	23	151	5	0.15
170810	07:08:39.70	44°47.25'	111°02.09'	6.0	0.5	12	147	4	0.09
170810	07:52:25.21	44°47.28'	111°02.29'	7.0	1.0W	15	147	4	0.12
170810	08:08:47.73	44°47.74'	111°02.52'	8.1	0.3	12	154	5	0.16
170810	09:15:19.89	44°47.40'	111°05.02'	8.4	1.4W	15	139	2	0.12
170810	10:00:37.07	44°46.26'	111°01.44'	6.2	0.1	6	147	2	0.11
170810	10:50:37.04	44°46.74'	111°02.25'	7.8	1.1W	13	158	3	0.15
170810	10:52:38.23	44°47.56'	111°02.96'	6.4	0.7W	14	149	5	0.10
170810	11:18:43.00	44°47.25'	111°02.28'	8.0	1.9W	20	147	4	0.14
170810	11:22:55.15	44°47.39'	111°01.97'	7.3	1.2W	15	150	4	0.11
170810	11:51:17.53	44°47.03'	111°02.27'	8.3	1.6W	15	143	4	0.11
170810	12:05:20.06	44°47.59'	111°02.82'	8.1	2.4W	24	150	5	0.16
170810	12:06:16.36	44°46.92'	111°02.03'	8.2	1.5W	13	143	3	0.18
170810	12:34:12.93	44°46.76'	111°02.20'	7.4	1.0W	12	141	3	0.05
170810	13:56:47.21	44°46.27'	111°05.33'	9.2	0.9W	8	127	3	0.12
170810	14:08:04.81	44°47.71'	111°04.71'	7.8	0.2	7	177	7	0.15
170810	14:18:11.58	44°46.26'	111°02.16'	6.2	0.7	8	145	3	0.11
170810	14:31:40.43	44°47.09'	111°02.66'	8.3	1.6W	15	160	4	0.15
170810	14:37:11.34	44°47.20'	111°01.86'	7.1	1.1W	13	148	4	0.08
170810	14:39:42.49	44°47.14'	111°02.30'	7.8	1.3W	14	145	4	0.11
170810	14:41:33.19	44°47.11'	111°03.00'	9.0	3.0W	25	114	5	0.13
170810	14:51:23.36	44°46.72'	111°02.45'	7.9	0.4	14	139	3	0.15
170810	15:01:21.80	44°47.12'	111°02.44'	8.0	0.3	9	145	4	0.09

Table 2. Earthquakes in the Yellowstone Region: July 1–September 30, 2017

DATE	ORIGIN TIME	LATITUDE	LONGITUDE	DEPTH	MAG	NO	GAP	DMN	RMS
170810	15:01:47.63	44°46.67'	111°02.48'	8.0	0.8	9	139	3	0.11
170810	15:11:19.64	44°46.80'	111°02.05'	7.0	-0.1	10	142	3	0.12
170810	15:21:07.39	44°47.02'	111°02.61'	8.1	1.4W	17	142	4	0.16
170810	15:37:38.50	44°47.10'	111°02.45'	6.6	-0.2	10	144	4	0.09
170810	15:38:12.49	44°46.08'	111°03.71'	5.8	-0.2	6	148	5	0.07
170810	16:27:49.67	44°50.09'	111°00.95'	9.9	0.1	6	294	8	0.04
170810	16:50:11.30	44°47.11'	111°02.57'	8.2	2.0W	24	144	4	0.15
170810	17:09:59.52	44°47.20'	111°02.43'	8.0	0.4	10	146	4	0.13
170810	17:15:49.96	44°48.48'	111°01.93'	8.3	0.6	8	227	6	0.09
170810	17:47:48.19	44°47.09'	111°02.00'	8.1	0.6	13	146	4	0.12
170810	17:50:46.38	44°47.32'	111°03.63'	7.9	0.6	11	144	4	0.13
170810	17:51:24.95	44°47.27'	111°02.39'	4.9	0.4	11	147	4	0.12
170810	19:34:04.82	44°46.32'	111°02.35'	7.7	0.7	7	181	3	0.10
170810	19:34:21.44	44°44.32'	111°05.60'	2.0	0.2	8	93	6	0.29
170810	19:41:32.98	44°47.16'	111°02.40'	6.5	0.2	11	194	4	0.15
170810	19:44:13.45	44°48.04'	111°02.36'	7.8	0.5	12	158	5	0.12
170810	20:59:28.45	44°48.44'	111°02.89'	8.0	0.2	7	213	5	0.07
170810	21:06:44.84	44°47.80'	111°02.52'	7.2	0.4	10	203	5	0.06
170810	21:14:10.22	44°47.18'	111°02.39'	8.3	1.1W	14	146	4	0.12
170810	21:22:08.21	44°46.99'	111°02.76'	8.9	1.8W	22	142	4	0.14
170810	21:26:36.91	44°47.10'	111°02.15'	8.3	1.4W	16	145	4	0.12
170810	22:05:49.71	44°47.96'	111°00.94'	9.8	0.2	6	236	5	0.09
170810	22:33:20.16	44°47.86'	111°02.80'	7.6	1.4W	16	154	5	0.12
170810	22:47:56.94	44°47.85'	111°03.19'	6.6	1.4W	14	152	4	0.10
170810	23:09:04.46	44°47.75'	111°02.95'	7.7	1.4W	16	151	5	0.11
170810	23:11:58.94	44°47.92'	111°02.93'	5.7	0.8W	14	155	5	0.09
170810	23:12:22.68	44°47.72'	111°03.02'	8.1	2.0W	19	151	4	0.11
170810	23:12:52.19	44°47.58'	111°02.91'	6.3	1.8	15	149	5	0.10
170810	23:16:57.11	44°47.97'	111°02.68'	7.1	0.3	9	156	5	0.11
170810	23:24:30.54	44°47.50'	111°02.88'	6.0	0.6	13	149	5	0.13
170810	23:33:31.96	44°47.97'	111°02.63'	7.6	0.7	13	156	5	0.13
170810	23:35:34.64	44°47.11'	111°02.53'	7.8	0.9W	15	144	4	0.11
170810	23:35:49.07	44°47.64'	111°03.00'	7.9	0.6	11	165	4	0.11
170810	23:58:03.32	44°47.29'	111°02.89'	7.4	0.4	14	145	5	0.12
170811	00:18:08.71	44°47.90'	111°02.83'	6.3	0.3	10	155	5	0.06
170811	00:42:51.65	44°47.38'	111°02.34'	6.4	1.5W	15	149	4	0.13
170811	00:45:02.79	44°47.36'	111°01.16'	9.8	1.0W	15	152	3	0.13
170811	03:13:04.72	44°47.07'	111°02.15'	7.7	0.6	14	145	4	0.14
170811	03:23:18.80	44°46.67'	111°01.93'	7.7	0.3	12	140	3	0.12
170811	05:07:37.08	44°46.98'	111°02.46'	7.8	0.7	18	143	4	0.15
170811	05:28:39.11	44°47.45'	111°02.52'	7.5	0.5	12	149	5	0.14
170811	06:25:27.46	44°47.73'	111°02.14'	6.5	-0.1	9	155	5	0.06
170811	07:15:50.21	44°47.07'	111°02.75'	8.4	1.4W	20	143	4	0.13
170811	09:13:50.72	44°47.81'	111°02.15'	9.3	0.3	8	205	5	0.13
170811	09:33:38.46	44°46.51'	111°02.33'	7.3	0.4	7	137	3	0.10

Table 2. Earthquakes in the Yellowstone Region: July 1–September 30, 2017

DATE	ORIGIN TIME	LATITUDE	LONGITUDE	DEPTH	MAG	NO	GAP	DMN	RMS
170811	09:33:45.15	44°46.75'	111°01.67'	8.6	1.0	12	141	3	0.15
170811	11:14:34.05	44°47.90'	111°05.22'	6.2	0.6	11	145	2	0.10
170811	12:19:01.31	44°46.50'	111°00.81'	7.3	0.4	11	183	2	0.13
170811	14:05:57.20	44°47.82'	111°02.17'	5.6	0.8W	10	155	5	0.14
170811	15:38:21.87	44°46.88'	111°02.49'	8.7	1.1W	16	142	4	0.16
170811	15:38:35.41	44°47.79'	111°02.47'	5.5	0.9	12	154	5	0.14
170811	18:47:13.77	44°46.97'	111°01.08'	9.1	0.4	14	146	3	0.16
170811	19:25:22.76	44°47.53'	111°02.94'	6.8	0.6	14	149	5	0.12
170811	19:34:20.36	44°47.33'	111°02.22'	5.5	1.1	7	171	4	0.06
170811	20:18:58.84	44°46.55'	111°00.58'	9.8	0.6	11	141	2	0.09
170811	20:41:59.79	44°47.55'	111°04.75'	7.2	1.5W	17	142	2	0.11
170811	23:16:51.81	44°48.02'	111°04.96'	5.9	0.9	13	148	2	0.12
170811	23:30:15.67	44°47.31'	111°01.08'	8.5	1.2W	14	151	3	0.10
170811	23:37:45.68	44°47.39'	111°01.08'	8.4	1.4W	18	152	4	0.12
170811	23:49:59.40	44°47.14'	111°00.81'	9.3	0.8W	11	149	3	0.07
170811	23:53:46.81	44°47.14'	110°59.68'	8.8	0.9W	11	151	3	0.16
170811	23:54:05.76	44°46.77'	111°00.57'	7.7	0.6W	11	144	2	0.09
170811	23:54:38.26	44°46.95'	111°00.46'	8.1	0.5W	11	147	3	0.11
170811	23:57:33.26	44°46.87'	110°59.85'	9.5	0.8W	12	148	3	0.11
170812	00:05:29.22	44°47.34'	111°01.07'	8.3	1.3W	18	152	3	0.11
170812	00:12:16.77	44°47.13'	111°01.95'	5.7	0.7	10	146	4	0.07
170812	00:38:51.67	44°47.91'	111°02.59'	6.9	0.1	10	156	5	0.09
170812	00:49:19.94	44°47.47'	111°00.48'	9.7	0.8W	14	155	4	0.12
170812	01:56:06.52	44°46.88'	111°00.66'	10.4	0.8W	14	146	2	0.12
170812	01:57:15.11	44°25.21'	110°34.39'	1.6	0.7W	7	99	2	0.06
170812	02:36:22.38	44°46.81'	111°01.24'	8.9	1.1W	15	144	3	0.14
170812	02:37:45.68	44°47.27'	111°02.05'	5.6	0.7W	12	148	4	0.08
170812	03:58:25.08	44°47.00'	111°02.00'	6.4	0.6W	10	144	3	0.09
170812	04:16:47.17	44°47.54'	111°02.70'	5.5	0.7W	10	150	5	0.08
170812	05:38:10.61	44°47.05'	111°02.06'	7.6	0.2	14	145	4	0.11
170812	06:06:04.15	44°47.04'	111°02.88'	5.9	0.2	13	143	4	0.13
170812	06:08:32.50	44°47.29'	111°00.56'	10.0	0.9W	16	152	3	0.10
170812	06:11:09.43	44°47.35'	111°03.18'	5.5	1.0W	15	146	4	0.11
170812	06:26:33.93	44°41.86'	111°02.63'	8.6	0.7	15	93	7	0.16
170812	08:06:45.94	44°23.73'	110°41.80'	2.0	0.7W	10	119	10	0.10
170812	08:24:49.64	44°47.43'	111°01.91'	6.2	0.5	11	150	4	0.12
170812	09:30:53.99	44°42.15'	111°02.34'	8.8	0.8W	12	102	7	0.13
170812	09:42:51.51	44°47.29'	111°02.08'	6.2	0.6	14	148	4	0.15
170812	09:43:29.94	44°47.43'	111°02.15'	7.0	0.6	13	150	4	0.14
170812	10:43:29.22	44°46.79'	111°01.76'	5.1	0.6W	11	142	3	0.12
170812	11:29:26.00	44°46.02'	111°03.97'	5.2	-0.4	8	127	5	0.15
170812	11:29:33.75	44°46.76'	111°02.30'	4.4	0.7W	11	141	3	0.15
170812	11:38:51.39	44°47.18'	111°01.81'	8.1	0.8W	14	148	4	0.12
170812	11:39:33.07	44°46.38'	111°00.96'	8.7	-0.3	7	138	2	0.13
170812	11:51:06.30	44°47.04'	111°02.00'	5.6	0.6	12	145	3	0.10

Table 2. Earthquakes in the Yellowstone Region: July 1–September 30, 2017

DATE	ORIGIN TIME	LATITUDE	LONGITUDE	DEPTH	MAG	NO	GAP	DMN	RMS
170812	12:06:50.47	44°47.21'	111°01.60'	5.8	0.6	10	149	3	0.11
170812	12:41:09.98	44°46.78'	111°02.53'	5.6	-0.1	10	140	4	0.08
170812	12:43:17.17	44°47.08'	111°01.93'	6.0	1.1W	15	146	3	0.12
170812	14:08:41.26	44°47.09'	111°00.44'	7.2	0.8W	14	150	3	0.14
170812	15:21:37.52	44°47.77'	111°02.86'	8.3	1.7W	20	153	5	0.14
170812	16:19:27.85	44°43.94'	111°08.92'	13.0	0.4	14	68	4	0.10
170812	17:32:16.53	44°47.38'	111°00.64'	5.7	-0.2	10	153	3	0.14
170812	17:32:34.75	44°47.28'	111°01.20'	8.5	0.8W	15	150	3	0.13
170812	17:54:26.86	44°47.96'	111°04.91'	8.2	0.4	13	147	2	0.11
170812	18:04:12.33	44°48.15'	111°04.92'	8.6	0.5	10	162	2	0.11
170812	20:21:56.72	44°46.94'	111°01.72'	9.4	0.4	13	145	3	0.12
170812	20:22:12.75	44°46.80'	111°03.42'	6.4	0.6W	12	137	4	0.11
170813	03:11:04.94	44°47.95'	111°05.04'	8.0	0.4	9	159	2	0.05
170813	04:40:18.60	44°47.96'	111°04.45'	5.8	0.4	12	149	3	0.10
170813	07:02:50.12	44°47.01'	111°04.56'	6.7	0.1	10	136	3	0.05
170813	07:03:34.79	44°47.42'	111°04.13'	7.1	0.5W	10	143	3	0.06
170813	08:19:04.01	44°47.09'	111°02.68'	7.9	0.6	16	160	4	0.10
170813	08:37:19.61	44°47.23'	111°01.22'	7.5	0.6W	10	150	3	0.09
170813	08:38:44.42	44°44.17'	111°05.12'	2.2	0.2W	8	144	7	0.14
170813	09:16:01.88	44°46.02'	111°01.14'	8.1	0.6W	12	143	1	0.13
170813	11:43:30.56	44°48.33'	111°05.46'	5.9	2.0W	16	150	2	0.12
170813	12:30:41.94	44°47.23'	111°02.08'	8.1	0.9W	15	147	4	0.13
170813	15:01:01.88	44°46.73'	111°00.07'	10.5	1.8W	16	144	2	0.12
170813	15:01:16.85	44°46.40'	110°59.73'	9.1	1.4W	15	140	2	0.13
170813	15:01:42.59	44°46.78'	110°59.98'	8.8	1.1W	16	146	2	0.13
170813	18:37:38.61	44°47.20'	111°04.69'	7.8	1.3W	15	138	2	0.11
170813	20:12:41.00	44°47.68'	111°02.15'	8.8	1.3W	16	153	5	0.10
170813	20:14:41.19	44°47.28'	111°01.16'	7.9	0.8W	9	150	3	0.10
170813	22:08:00.39	44°46.46'	110°59.80'	7.9	1.2W	13	141	2	0.15
170813	23:49:05.23	44°47.82'	111°05.14'	6.2	1.0W	12	144	2	0.07
170814	04:11:14.67	44°50.30'	110°52.32'	8.0	1.3W	15	217	6	0.15
170814	04:26:41.32	44°47.67'	111°02.61'	8.1	1.0W	16	152	5	0.14
170814	06:36:48.14	44°34.47'	110°46.60'	7.1	0.2W	7	128	8	0.10
170814	06:37:07.55	44°34.50'	110°46.36'	7.7	0.8W	11	109	8	0.12
170814	06:37:17.92	44°34.49'	110°45.63'	6.1	0.9W	11	111	9	0.12
170814	06:38:23.19	44°34.47'	110°46.67'	7.2	0.9W	9	127	7	0.08
170814	06:38:35.65	44°34.36'	110°47.06'	5.6	1.2W	11	126	7	0.08
170814	06:39:21.84	44°34.89'	110°46.08'	7.5	1.5W	18	75	8	0.17
170814	06:40:05.60	44°34.74'	110°46.59'	7.7	1.0W	14	78	7	0.16
170814	06:41:14.61	44°35.06'	110°45.76'	7.8	1.0	16	74	8	0.20
170814	06:41:30.18	44°34.94'	110°45.92'	7.9	1.9W	27	58	8	0.19
170814	06:42:56.49	44°34.85'	110°46.15'	7.7	1.3W	17	76	8	0.14
170814	06:43:12.47	44°34.42'	110°45.95'	5.5	0.9	9	111	8	0.13
170814	06:48:01.07	44°34.96'	110°45.84'	7.7	1.3W	15	74	8	0.16
170814	06:50:32.87	44°47.10'	111°02.20'	7.5	2.1W	25	145	4	0.13

Table 2. Earthquakes in the Yellowstone Region: July 1–September 30, 2017

DATE	ORIGIN TIME	LATITUDE	LONGITUDE	DEPTH	MAG	NO	GAP	DMN	RMS
170814	06:51:27.97	44°47.39'	111°01.93'	7.6	1.2W	13	150	4	0.10
170814	07:18:48.07	44°47.33'	111°01.96'	7.7	1.2W	16	149	4	0.13
170814	07:47:56.04	44°34.70'	110°45.88'	7.6	0.8W	16	115	8	0.17
170814	09:54:11.60	44°47.24'	111°01.96'	6.7	0.3	11	148	4	0.09
170814	11:14:58.12	44°34.95'	110°47.47'	6.7	0.4W	12	83	6	0.27
170814	11:21:47.17	44°34.37'	110°47.00'	7.9	0.5W	11	126	7	0.12
170814	13:03:39.39	44°35.56'	110°46.15'	3.5	0.8W	12	118	7	0.35
170814	13:16:22.79	44°34.99'	110°46.43'	8.2	1.3W	15	77	7	0.18
170814	13:21:40.82	44°35.85'	110°46.18'	1.3	0.9W	13	74	7	0.38
170814	13:23:01.25	44°34.66'	110°46.41'	7.8	1.2W	12	108	8	0.14
170814	13:29:38.64	44°34.44'	110°46.76'	8.1	0.5	10	127	7	0.09
170814	13:31:57.04	44°34.40'	110°46.79'	9.2	0.6W	9	128	7	0.06
170814	13:33:26.78	44°34.65'	110°45.97'	7.8	0.3	9	130	8	0.12
170814	13:42:58.12	44°34.18'	110°46.66'	7.8	0.7W	8	131	8	0.07
170814	14:02:51.30	44°34.81'	110°45.97'	7.7	2.0W	24	75	8	0.15
170814	14:04:56.69	44°34.60'	110°45.86'	6.0	2.7W	24	60	8	0.14
170814	14:25:06.15	44°34.10'	110°46.19'	7.7	0.9W	8	136	8	0.15
170814	15:10:51.08	44°48.15'	111°02.52'	6.2	0.5	8	159	5	0.06
170814	15:25:21.67	44°47.89'	111°02.85'	8.3	1.9W	17	154	5	0.12
170814	16:41:49.45	44°47.23'	111°02.95'	6.1	1.2W	10	166	5	0.12
170814	17:05:05.61	44°46.75'	111°02.58'	9.4	0.6	9	140	4	0.06
170814	17:24:25.94	44°45.96'	111°03.75'	2.8	0.3	7	145	5	0.07
170814	18:28:01.36	44°46.93'	111°04.73'	6.7	0.6	7	167	3	0.08
170815	02:03:00.36	44°47.28'	111°02.88'	8.6	3.0W	22	145	5	0.13
170815	02:14:42.29	44°47.28'	111°02.24'	7.9	0.9W	14	147	4	0.13
170815	03:23:31.93	44°47.33'	111°02.25'	7.2	0.1	11	164	4	0.15
170815	04:13:29.55	44°46.91'	111°01.40'	9.1	-0.1	9	144	3	0.07
170815	04:29:43.02	44°47.03'	111°01.17'	10.0	1.2W	14	147	3	0.13
170815	04:58:38.70	44°33.98'	110°46.38'	3.2	0.7W	10	95	8	0.11
170815	04:58:53.14	44°34.75'	110°46.62'	8.0	0.6	9	110	7	0.17
170815	04:59:20.24	44°34.06'	110°45.94'	3.0	0.8	7	138	9	0.10
170815	04:59:29.06	44°34.34'	110°46.01'	4.8	1.4W	10	134	8	0.14
170815	05:00:05.04	44°34.20'	110°46.70'	6.7	1.4	7	131	8	0.11
170815	05:02:49.61	44°34.37'	110°46.14'	4.4	1.4W	16	68	8	0.19
170815	07:26:20.20	44°47.59'	111°01.86'	6.8	0.2	11	193	4	0.06
170815	07:49:36.68	44°47.32'	111°01.98'	6.8	0.3	12	149	4	0.07
170815	08:12:34.85	44°47.40'	111°02.42'	7.8	0.8	16	149	4	0.10
170815	08:29:00.14	44°47.54'	111°02.24'	7.8	0.6	14	151	4	0.08
170815	08:41:27.03	44°47.35'	111°01.95'	7.6	1.1W	16	149	4	0.10
170815	09:35:13.43	44°46.23'	111°02.58'	5.5	0.0	7	172	3	0.10
170815	09:37:41.17	44°47.27'	111°01.07'	8.6	1.0W	15	150	3	0.08
170815	10:53:17.52	44°47.21'	111°01.05'	9.1	1.1W	13	150	3	0.09
170815	10:54:09.60	44°46.87'	111°02.42'	5.9	--	5	186	4	0.13
170815	17:05:24.62	44°47.14'	111°04.58'	8.2	1.0W	15	137	3	0.09
170815	17:10:14.27	44°46.89'	111°02.39'	7.6	1.0W	12	142	4	0.07

Table 2. Earthquakes in the Yellowstone Region: July 1–September 30, 2017

DATE	ORIGIN TIME	LATITUDE	LONGITUDE	DEPTH	MAG	NO	GAP	DMN	RMS
170815	18:06:17.88	44°47.54'	111°02.46'	6.5	0.3	8	150	5	0.04
170815	21:27:30.26	44°47.83'	111°04.11'	6.3	1.2W	16	149	3	0.12
170815	21:28:14.15	44°48.24'	111°04.41'	6.7	1.5W	16	121	3	0.11
170815	21:53:23.94	44°47.80'	111°01.93'	7.3	0.4	5	156	5	0.05
170815	22:42:18.10	44°47.33'	111°01.29'	5.9	0.9W	7	173	4	0.05
170816	01:40:44.74	44°36.71'	111°06.40'	6.6	0.7	8	128	1	0.12
170816	08:29:38.84	44°33.31'	110°44.41'	5.9	1.9W	7	98	11	0.31
170816	08:29:59.92	44°34.17'	110°41.53'	7.5	1.1	8	110	6	0.08
170816	08:30:19.68	44°34.39'	110°40.77'	8.0	1.3W	10	118	5	0.18
170816	09:55:01.40	44°47.62'	111°01.95'	7.9	0.7W	13	153	4	0.10
170816	10:21:37.82	44°47.40'	111°02.13'	5.0	0.2	6	173	4	0.09
170816	12:26:02.66	44°47.06'	111°04.50'	8.3	1.8W	21	137	3	0.14
170816	12:47:03.32	44°47.83'	111°01.34'	6.3	0.2	10	172	4	0.10
170816	15:41:26.41	44°47.65'	111°02.35'	6.1	-0.1	8	152	5	0.04
170816	15:41:52.99	44°47.24'	111°02.32'	8.2	-0.1	9	147	4	0.08
170816	15:42:17.33	44°47.17'	111°03.06'	6.2	-0.5	5	184	5	0.05
170816	15:42:27.70	44°47.21'	111°02.56'	7.9	1.1W	11	146	4	0.07
170816	16:57:13.18	44°47.61'	111°02.09'	8.0	1.2W	14	153	4	0.13
170816	20:19:16.56	44°47.01'	111°02.31'	7.8	1.0W	14	143	4	0.10
170816	20:40:42.97	44°47.37'	111°04.88'	8.9	1.9W	19	139	2	0.13
170816	22:20:28.59	44°47.55'	111°00.67'	9.1	1.0W	13	155	4	0.11
170816	23:37:21.78	44°47.26'	111°04.09'	8.4	1.0W	15	141	3	0.15
170817	01:47:09.55	44°47.21'	111°02.52'	8.8	1.5W	19	146	4	0.12
170817	01:49:46.36	44°47.32'	111°02.54'	8.4	1.3W	17	148	4	0.11
170817	01:49:52.47	44°46.73'	111°01.44'	5.1	1.0W	8	158	3	0.22
170817	03:49:26.73	44°47.17'	111°02.22'	7.7	0.9W	15	146	4	0.12
170817	04:25:17.42	44°47.35'	111°02.27'	8.0	0.9W	13	149	4	0.08
170817	08:14:12.94	44°46.97'	111°02.02'	9.7	2.3W	25	144	3	0.13
170817	08:18:54.73	44°34.21'	110°46.12'	7.9	0.4W	9	135	8	0.13
170817	08:31:41.74	44°47.88'	111°01.56'	8.9	0.8W	14	158	5	0.20
170817	13:59:43.28	44°47.16'	111°02.43'	7.6	0.6W	9	145	4	0.05
170817	22:59:58.58	44°47.22'	111°04.93'	7.8	1.6W	19	137	2	0.14
170818	04:20:23.90	44°47.12'	111°03.09'	4.5	0.4	9	142	5	0.11
170818	10:09:01.66	44°47.15'	111°02.38'	7.1	0.1	12	145	4	0.06
170818	13:27:57.35	44°43.63'	111°11.94'	5.8	1.2W	17	64	3	0.19
170819	04:58:18.58	44°48.40'	111°01.30'	7.1	0.3	11	166	5	0.08
170819	06:41:17.47	44°15.64'	110°36.65'	5.4	0.9	15	105	7	0.13
170819	08:03:21.46	44°15.43'	110°36.48'	4.1	1.0	14	109	6	0.12
170819	08:11:35.13	44°16.49'	110°37.16'	8.1	1.3W	10	92	7	0.13
170819	08:11:50.01	44°16.58'	110°38.23'	7.6	0.8	6	170	9	0.01
170819	08:11:58.48	44°17.40'	110°32.65'	10.3	2.0	7	155	3	0.08
170819	08:12:43.12	44°16.59'	110°38.51'	6.3	1.4	11	112	9	0.14
170819	08:13:04.34	44°16.79'	110°39.08'	5.0	0.6	9	114	10	0.15
170819	08:15:26.22	44°16.11'	110°36.60'	8.3	1.6W	14	97	7	0.18
170819	08:17:47.90	44°16.12'	110°36.88'	6.2	1.4W	13	97	7	0.13

Table 2. Earthquakes in the Yellowstone Region: July 1–September 30, 2017

DATE	ORIGIN TIME	LATITUDE	LONGITUDE	DEPTH	MAG	NO	GAP	DMN	RMS
170819	08:18:34.44	44°16.40'	110°37.57'	7.8	0.7	13	93	8	0.11
170819	08:20:21.63	44°16.10'	110°37.00'	7.3	0.5	11	98	7	0.12
170819	08:23:02.94	44°16.31'	110°37.25'	7.4	1.6W	18	95	7	0.15
170819	08:24:15.25	44°16.23'	110°37.18'	8.1	1.4W	13	95	7	0.14
170819	08:32:21.88	44°15.94'	110°37.13'	5.0	0.4	12	100	7	0.15
170819	08:33:39.09	44°14.92'	110°35.57'	2.0	1.0	13	122	5	0.18
170819	12:06:22.85	44°16.68'	110°37.30'	7.3	0.9	14	90	8	0.13
170819	12:37:47.89	44°15.43'	110°36.30'	4.3	1.2	15	110	6	0.12
170819	12:48:07.35	44°15.78'	110°36.41'	7.3	1.6W	14	104	6	0.17
170819	12:50:20.20	44°16.21'	110°36.52'	10.4	0.6	12	96	6	0.12
170819	13:37:35.62	44°49.00'	111°04.26'	7.8	1.3W	15	166	4	0.08
170819	14:58:16.72	44°47.57'	111°01.14'	8.1	0.3	6	155	4	0.01
170819	18:14:31.16	44°47.78'	111°03.57'	5.9	0.5	8	150	4	0.06
170820	02:28:12.73	44°47.52'	111°02.69'	7.6	1.1W	15	150	5	0.11
170820	03:12:05.43	44°47.52'	111°02.45'	7.6	0.0	9	200	5	0.10
170820	03:12:48.69	44°46.84'	111°03.22'	6.6	0.6W	9	174	4	0.05
170820	03:18:15.39	44°47.29'	111°02.58'	7.7	0.7	14	146	4	0.14
170820	04:04:27.76	44°16.28'	110°36.97'	6.6	1.9W	16	95	7	0.14
170820	04:09:07.44	44°16.37'	110°36.95'	9.4	1.5W	17	94	7	0.15
170820	04:09:44.05	44°16.32'	110°37.08'	6.4	1.2	15	93	7	0.16
170820	04:34:08.51	44°15.80'	110°36.27'	7.3	1.3W	14	103	6	0.16
170820	08:32:49.60	44°47.51'	111°02.25'	8.1	0.6	13	166	4	0.08
170820	09:28:42.15	44°46.25'	111°05.11'	10.3	0.5	15	130	3	0.09
170820	09:29:11.84	44°46.79'	111°04.79'	10.7	0.5	13	147	3	0.06
170820	11:27:01.24	44°47.20'	111°03.03'	8.4	1.5W	19	144	5	0.13
170820	13:07:44.37	44°47.80'	111°03.06'	6.2	0.2	6	206	5	0.03
170820	19:23:27.80	44°48.48'	111°05.11'	9.8	2.6W	18	154	2	0.13
170820	19:55:07.36	44°48.30'	111°04.94'	8.4	1.3W	9	164	2	0.06
170820	20:16:47.89	44°48.45'	111°04.78'	8.1	1.4W	14	155	2	0.09
170821	00:55:36.33	44°46.10'	111°05.31'	10.1	0.4	12	137	7	0.08
170821	01:39:29.04	44°44.78'	111°07.16'	5.4	-0.2	7	103	9	0.08
170821	03:00:48.96	44°48.62'	111°05.30'	9.4	3.3W	40	38	2	0.13
170821	03:47:31.25	44°48.84'	111°04.39'	8.6	0.6	13	135	3	0.06
170821	05:16:25.77	44°46.20'	111°10.43'	5.4	0.2	10	136	3	0.08
170821	05:16:43.10	44°46.15'	111°10.00'	5.1	0.4	10	123	3	0.07
170821	05:19:59.25	44°46.19'	111°10.59'	7.8	1.6W	14	72	3	0.14
170821	05:20:14.06	44°48.22'	111°05.06'	8.0	2.2W	13	162	2	0.09
170821	06:03:02.60	44°48.16'	111°04.58'	7.9	0.7W	12	152	2	0.11
170821	06:16:54.04	44°46.20'	111°10.49'	6.5	-0.1	9	137	3	0.13
170821	08:08:33.75	44°48.24'	111°04.11'	7.8	0.7W	15	155	3	0.16
170821	08:17:19.22	44°48.42'	111°04.45'	8.2	1.7W	17	156	3	0.11
170821	08:20:22.72	44°46.79'	111°05.78'	3.7	0.7W	8	131	2	0.24
170821	08:29:15.36	44°48.19'	111°04.66'	8.5	0.8W	11	164	2	0.07
170821	08:35:41.96	44°48.26'	111°04.71'	7.7	1.6W	18	152	2	0.12
170821	08:40:35.07	44°47.27'	111°04.58'	8.0	0.1	10	139	3	0.15

Table 2. Earthquakes in the Yellowstone Region: July 1–September 30, 2017

DATE	ORIGIN TIME	LATITUDE	LONGITUDE	DEPTH	MAG	NO	GAP	DMN	RMS
170821	09:51:02.42	44°47.41'	111°04.10'	6.3	0.7W	11	143	3	0.18
170821	10:29:51.95	44°46.47'	111°10.33'	8.2	1.6W	22	71	3	0.16
170821	10:43:21.36	44°49.20'	111°03.43'	6.6	0.8W	9	172	5	0.12
170821	12:20:04.52	44°48.03'	111°04.56'	7.0	0.8W	15	150	2	0.18
170821	15:34:07.30	44°48.61'	111°04.03'	8.9	-0.1	14	161	3	0.11
170821	15:56:17.92	44°47.94'	111°04.71'	7.6	0.9W	15	148	2	0.09
170821	21:38:15.11	44°48.34'	111°02.68'	7.3	0.4	8	173	5	0.06
170822	00:31:45.44	44°32.32'	110°32.41'	6.0	1.7W	13	92	11	0.09
170822	05:44:16.54	44°19.73'	110°19.51'	7.7	2.5W	17	117	8	0.11
170822	10:27:48.13	44°19.85'	110°19.59'	9.5	1.0	13	115	8	0.07
170822	11:36:21.20	44°47.51'	111°01.68'	8.5	0.9W	18	152	4	0.09
170822	12:13:37.83	44°19.80'	110°19.48'	10.4	1.2	13	202	8	0.15
170822	13:10:58.07	44°20.12'	110°20.12'	7.1	0.9	12	109	7	0.08
170822	13:31:40.73	44°20.81'	110°20.69'	6.3	0.7	9	195	7	0.12
170822	13:32:11.59	44°47.28'	111°01.50'	8.8	1.1W	14	149	4	0.08
170822	18:38:23.80	44°48.31'	111°04.29'	9.1	1.0W	13	156	3	0.08
170822	22:55:36.34	44°47.82'	111°04.87'	7.0	0.5	12	145	2	0.13
170823	00:52:08.53	44°20.60'	110°20.63'	7.1	1.2	10	200	7	0.07
170823	04:58:31.81	44°47.96'	111°04.77'	7.5	1.3W	17	148	2	0.09
170823	07:36:42.31	44°48.34'	111°04.84'	8.0	0.4	8	189	2	0.07
170823	17:09:44.54	44°47.50'	111°00.81'	7.0	0.8W	12	154	4	0.14
170823	17:18:47.63	44°46.68'	111°01.23'	7.1	1.0W	15	142	2	0.13
170823	18:00:12.73	44°34.89'	110°26.30'	2.1	0.2	8	141	4	0.13
170824	01:20:51.17	44°47.59'	111°00.99'	9.9	1.5W	13	120	4	0.11
170824	01:30:19.23	44°45.75'	111°11.22'	10.4	1.0	14	76	1	0.16
170824	02:24:58.17	44°46.13'	110°46.72'	5.7	0.9W	17	195	6	0.14
170824	09:34:49.83	44°45.72'	110°59.08'	8.1	1.3W	12	131	2	0.17
170824	15:11:38.99	44°45.41'	111°12.18'	9.4	0.6	7	159	1	0.09
170824	15:39:01.89	44°47.48'	111°20.04'	11.9	1.7W	9	251	12	0.15
170824	15:39:03.15	44°46.43'	111°15.36'	3.6	1.6W	7	224	5	0.14
170824	17:42:27.23	44°45.51'	111°10.31'	8.2	0.7W	11	109	2	0.09
170825	05:30:13.48	44°45.30'	111°11.05'	8.0	0.2	8	115	1	0.12
170825	10:07:34.19	44°25.32'	110°35.38'	3.8	1.2W	16	91	2	0.07
170825	23:44:52.86	44°44.09'	111°14.71'	4.2	0.9	8	136	3	0.04
170826	05:07:57.49	44°32.84'	111°09.59'	14.9	0.6	10	143	8	0.11
170826	14:15:09.99	44°19.03'	110°18.94'	8.8	1.2W	14	193	9	0.13
170826	16:33:33.14	44°47.64'	111°01.16'	8.4	1.0W	9	200	4	0.08
170827	05:16:23.53	44°32.52'	111°08.23'	15.1	0.5	8	196	8	0.19
170827	07:08:56.56	44°47.44'	111°01.35'	8.5	0.6	18	153	4	0.10
170827	10:45:08.27	44°44.91'	111°00.18'	4.6	0.2	8	142	1	0.07
170827	10:50:07.77	44°39.14'	110°56.33'	8.9	1.4W	18	48	6	0.11
170827	11:19:20.18	44°47.37'	111°01.38'	8.6	0.8W	14	151	4	0.08
170827	11:45:20.49	44°46.26'	110°59.29'	6.8	0.4	9	211	2	0.11
170827	11:45:55.18	44°46.51'	110°59.44'	7.1	0.2	9	227	2	0.12
170827	11:52:16.60	44°47.20'	111°00.62'	10.1	0.9W	13	151	3	0.10

Table 2. Earthquakes in the Yellowstone Region: July 1–September 30, 2017

DATE	ORIGIN TIME	LATITUDE	LONGITUDE	DEPTH	MAG	NO	GAP	DMN	RMS
170827	11:55:17.39	44°47.01'	111°01.10'	9.9	0.3	7	255	3	0.07
170827	11:58:05.49	44°47.35'	111°00.76'	9.3	0.4	15	152	3	0.12
170827	12:34:17.04	44°47.12'	111°00.66'	8.6	0.3	7	192	3	0.08
170827	12:41:28.40	44°47.26'	111°00.83'	9.9	1.4W	19	151	3	0.14
170827	12:41:53.95	44°14.97'	110°47.56'	3.8	1.0	9	146	3	0.19
170827	12:48:24.47	44°38.90'	110°56.26'	7.4	0.9W	9	181	6	0.08
170827	13:31:00.11	44°36.87'	110°58.14'	9.3	0.7	7	179	9	0.09
170827	13:41:11.88	44°47.34'	111°00.73'	10.9	1.8W	18	152	3	0.13
170827	13:45:33.65	44°47.23'	111°00.95'	9.8	0.3	11	150	3	0.15
170827	15:14:17.21	44°46.37'	110°59.99'	8.2	0.2	9	237	2	0.13
170827	15:59:46.84	44°47.26'	111°00.69'	10.4	2.2W	21	151	3	0.14
170827	16:02:42.33	44°47.12'	111°00.55'	9.4	1.1W	16	150	3	0.13
170827	16:06:01.03	44°47.22'	111°00.65'	10.1	1.4W	17	151	3	0.16
170827	16:09:04.03	44°47.20'	111°00.92'	10.6	1.1W	12	150	3	0.12
170827	16:14:31.42	44°46.78'	111°00.67'	9.8	0.4	11	187	2	0.11
170827	16:17:37.51	44°39.02'	110°56.30'	8.4	0.5	9	93	6	0.16
170827	18:14:30.23	44°47.57'	111°00.60'	9.8	2.0W	18	156	4	0.13
170827	18:25:35.18	44°47.07'	111°00.58'	10.0	0.3	13	149	3	0.12
170827	18:29:59.80	44°47.43'	111°00.43'	10.8	1.9W	17	155	3	0.12
170827	19:35:11.12	44°46.81'	110°59.94'	7.8	0.9	8	262	2	0.18
170827	19:47:42.58	44°46.97'	111°00.79'	9.8	1.4W	15	147	3	0.13
170827	19:47:53.56	44°47.38'	111°00.65'	11.2	2.8W	31	48	3	0.14
170827	19:58:08.84	44°46.86'	111°00.41'	9.6	0.5	12	188	2	0.14
170827	19:58:42.60	44°47.59'	111°00.59'	10.7	0.6	11	199	4	0.10
170827	20:01:20.35	44°47.35'	111°00.42'	9.6	1.6W	16	153	3	0.13
170827	20:04:09.58	44°47.18'	111°00.39'	8.8	0.1	14	150	3	0.14
170827	20:04:28.16	44°47.08'	111°00.47'	8.9	0.7	14	149	3	0.14
170827	20:04:33.96	44°44.27'	111°01.99'	5.2	0.5	6	124	3	0.02
170827	20:04:45.08	44°46.21'	111°00.87'	8.1	0.3	11	137	1	0.13
170827	20:09:21.52	44°47.08'	111°00.64'	10.4	1.1W	14	149	3	0.11
170827	20:09:58.52	44°46.84'	111°00.53'	9.2	0.4	11	146	2	0.08
170827	20:33:14.35	44°47.05'	111°00.32'	8.7	0.4	11	149	3	0.14
170827	20:34:42.05	44°47.14'	111°00.87'	12.9	2.8W	31	46	3	0.19
170827	20:35:27.10	44°47.19'	111°00.37'	9.1	1.6	9	151	3	0.05
170827	20:38:17.49	44°47.28'	111°00.73'	10.9	1.9W	14	151	3	0.11
170827	20:43:12.67	44°47.23'	110°59.87'	9.6	1.2W	15	153	3	0.15
170827	20:45:15.71	44°47.51'	110°59.78'	9.5	1.1W	16	157	4	0.14
170827	20:48:31.23	44°47.07'	111°00.30'	10.1	0.9W	11	149	3	0.11
170827	21:19:58.42	44°47.02'	111°00.57'	8.7	0.5	11	148	3	0.17
170827	21:22:00.40	44°46.63'	111°00.48'	9.7	0.4	11	185	2	0.15
170827	21:56:39.58	44°47.52'	111°00.30'	9.5	0.8W	15	155	4	0.13
170827	22:32:04.11	44°47.42'	111°00.63'	10.9	2.4W	17	153	3	0.09
170827	22:58:48.64	44°46.03'	110°59.10'	6.4	0.4	8	194	2	0.08
170827	23:04:07.63	44°47.11'	111°00.20'	9.5	0.2	14	150	3	0.14
170827	23:05:03.08	44°46.94'	111°00.22'	8.9	0.0	11	147	3	0.15

Table 2. Earthquakes in the Yellowstone Region: July 1–September 30, 2017

DATE	ORIGIN TIME	LATITUDE	LONGITUDE	DEPTH	MAG	NO	GAP	DMN	RMS
170827	23:05:26.44	44°47.22'	111°00.24'	9.7	0.4	14	152	3	0.13
170827	23:05:42.08	44°47.19'	111°00.61'	12.0	0.5	11	168	3	0.14
170828	04:22:27.03	44°47.38'	111°00.31'	10.7	1.8W	17	154	3	0.13
170828	04:26:27.72	44°46.39'	111°00.94'	8.8	0.9W	14	138	2	0.12
170828	04:27:51.33	44°47.29'	111°00.57'	10.5	1.3W	14	152	3	0.13
170828	06:34:07.99	44°46.71'	111°00.01'	9.0	0.3	11	185	2	0.14
170828	09:38:37.40	44°48.34'	110°58.43'	8.2	0.4	10	254	6	0.19
170828	16:24:38.63	44°47.44'	111°00.13'	10.3	1.0W	13	155	3	0.07
170828	16:57:00.44	44°47.35'	111°01.00'	8.2	0.4	11	196	3	0.09
170829	07:07:58.97	44°47.25'	111°00.49'	10.4	0.6	15	151	3	0.12
170829	07:49:17.37	44°47.30'	111°00.62'	10.2	1.1W	15	151	3	0.12
170829	07:57:09.12	44°26.81'	110°53.74'	4.9	0.9W	9	99	5	0.08
170829	08:24:28.55	44°19.38'	110°19.03'	9.8	1.4W	14	209	8	0.12
170829	12:24:37.12	44°47.27'	111°00.36'	10.2	0.1	13	152	3	0.11
170829	12:24:47.67	44°46.84'	111°01.50'	11.0	-0.6	7	143	3	0.10
170829	16:19:42.27	44°46.99'	111°01.68'	8.3	0.9W	15	145	3	0.14
170829	16:43:07.93	44°47.24'	111°00.82'	9.8	1.1W	17	151	3	0.12
170829	17:08:29.59	44°47.36'	111°04.70'	6.7	0.3W	13	140	2	0.14
170829	18:10:02.09	44°47.18'	111°01.58'	8.0	0.7W	16	148	3	0.18
170830	02:46:27.43	44°41.84'	110°59.76'	7.6	0.7	12	91	7	0.10
170830	15:35:18.29	44°46.77'	111°02.09'	7.7	-0.2	8	189	3	0.05
170830	19:43:05.40	44°03.90'	110°30.50'	4.1*	1.8W	18	174	22	0.07
170831	02:37:16.22	44°46.66'	111°02.19'	8.9	0.5	13	139	3	0.08
170831	04:18:30.36	44°46.68'	111°02.17'	9.2	0.7W	11	140	3	0.08
170831	12:06:22.08	44°46.48'	111°02.36'	8.1	0.7W	13	137	3	0.10
170831	15:36:17.97	44°47.05'	111°02.21'	8.3	0.5W	8	195	4	0.11
170831	17:24:59.28	44°47.49'	111°03.91'	6.7	0.8W	15	145	3	0.13
170901	20:25:16.90	44°48.39'	111°04.54'	8.7	0.9	15	155	3	0.12
170901	20:25:36.13	44°47.26'	110°46.80'	2.3	0.0	7	224	6	0.12
170902	06:36:05.28	44°47.89'	111°05.56'	6.6	0.6	9	155	1	0.10
170902	06:37:28.12	44°47.61'	111°05.94'	6.4	0.6	8	137	1	0.05
170902	12:06:00.19	44°47.00'	111°00.47'	10.1	0.6	15	148	3	0.09
170902	13:40:46.41	44°47.54'	111°00.50'	11.1	2.0W	19	155	4	0.11
170902	13:43:54.62	44°47.05'	111°00.23'	9.4	0.2	8	245	3	0.07
170902	14:27:36.53	44°47.38'	111°00.22'	11.0	0.4	10	154	3	0.07
170902	19:36:39.37	44°47.07'	111°00.46'	9.9	0.4	8	255	3	0.08
170903	03:19:49.44	44°48.00'	111°05.24'	6.0	0.2	13	146	2	0.09
170903	07:12:32.89	44°47.07'	111°00.53'	8.0	0.3	13	148	3	0.12
170903	08:35:18.18	44°46.85'	111°00.75'	8.9	0.4	15	145	2	0.11
170903	13:49:28.31	44°48.11'	111°04.10'	7.1	-0.3	8	165	3	0.07
170903	14:28:01.40	44°47.85'	111°05.65'	6.4	0.8	11	141	1	0.07
170903	22:51:44.08	44°47.16'	111°04.98'	7.2	1.7W	17	136	2	0.15
170904	00:20:26.81	44°47.35'	111°01.12'	10.1	1.8W	17	152	3	0.13
170904	00:21:28.38	44°47.20'	111°01.13'	8.2	0.4	13	150	3	0.12
170904	00:59:56.05	44°47.38'	111°01.22'	10.4	2.3W	20	152	4	0.12

Table 2. Earthquakes in the Yellowstone Region: July 1–September 30, 2017

DATE	ORIGIN TIME	LATITUDE	LONGITUDE	DEPTH	MAG	NO	GAP	DMN	RMS
170904	01:27:24.40	44°47.10'	111°01.12'	7.5	-0.2	11	148	3	0.11
170904	01:37:07.85	44°47.08'	111°01.10'	7.4	-0.3	8	148	3	0.09
170904	08:35:42.90	44°47.07'	111°01.85'	8.4	0.0	14	146	3	0.15
170904	12:45:48.89	44°48.35'	111°04.48'	6.4	0.8W	9	155	3	0.05
170904	22:42:14.18	44°47.04'	111°00.15'	8.4	0.2	12	149	3	0.09
170906	02:34:27.87	44°44.56'	111°03.75'	5.9	-0.4	5	194	5	0.09
170906	04:44:37.56	44°46.80'	111°00.28'	8.5	0.8	11	197	2	0.15
170906	07:09:40.96	44°47.35'	111°02.28'	7.8	0.6	13	149	4	0.08
170906	07:12:44.68	44°45.80'	110°59.16'	7.1	-0.1	12	132	2	0.15
170906	07:13:04.53	44°45.33'	110°58.96'	5.1	-0.4	12	126	2	0.14
170906	07:37:19.81	44°45.95'	110°58.88'	7.4	1.1	11	171	2	0.14
170906	07:41:00.71	44°47.52'	111°02.19'	6.6	-0.6	7	154	4	0.06
170906	07:59:13.82	44°47.34'	111°02.01'	8.0	0.6	17	149	4	0.13
170906	08:16:41.22	44°48.70'	111°01.01'	5.1	-0.5	9	172	6	0.19
170906	10:18:51.92	44°47.50'	111°02.23'	6.9	-0.4	11	151	4	0.10
170906	11:29:38.96	44°38.12'	110°42.74'	2.2	0.1	7	244	9	0.21
170906	11:29:54.31	44°39.24'	110°43.84'	5.3	0.3	9	216	8	0.15
170906	11:30:58.55	44°38.81'	110°42.08'	5.4	0.2	8	194	8	0.09
170906	11:45:54.33	44°38.05'	110°43.01'	5.8	0.9	7	186	9	0.12
170906	11:46:44.34	44°39.10'	110°43.79'	5.6	1.8W	16	123	8	0.17
170906	12:09:44.12	44°38.42'	110°43.28'	3.4	0.7	7	195	9	0.15
170906	12:11:10.12	44°23.17'	110°35.16'	2.1	0.4	7	151	1	0.17
170906	12:13:52.03	44°38.53'	110°43.50'	7.7	0.3	7	179	9	0.13
170906	12:17:10.88	44°39.00'	110°43.40'	10.3	1.7W	9	101	8	0.14
170906	12:29:28.99	44°39.55'	110°44.70'	4.8	0.6	12	201	8	0.14
170906	13:27:59.37	44°39.75'	110°44.55'	5.2	0.0	13	113	8	0.21
170906	16:07:41.56	44°38.94'	110°44.06'	8.3	0.5	10	157	8	0.10
170907	05:41:34.51	44°47.24'	111°02.34'	8.0	0.6	16	147	4	0.07
170907	19:06:47.86	44°43.09'	111°04.48'	9.4	1.4	16	76	7	0.13
170907	19:54:46.08	44°47.62'	111°02.54'	7.9	0.4	8	201	5	0.06
170907	23:19:42.70	44°47.32'	111°00.93'	8.2	1.3W	17	152	3	0.12
170907	23:23:11.15	44°43.09'	111°04.20'	8.5	1.2W	19	78	7	0.13
170908	03:49:12.21	44°19.48'	110°18.94'	6.0	0.7	12	148	8	0.11
170908	06:06:02.42	44°45.41'	111°11.07'	8.7	0.6	11	66	1	0.13
170908	08:08:30.21	44°23.77'	110°38.82'	2.6	1.5	15	129	6	0.14
170908	17:54:15.48	44°48.52'	110°48.60'	4.8	0.5	8	214	4	0.08
170909	04:59:54.50	44°47.21'	111°01.25'	8.8	0.7	18	149	3	0.16
170909	05:01:48.12	44°47.07'	111°01.37'	7.9	0.2	9	202	3	0.12
170909	08:51:23.90	44°47.29'	111°00.47'	9.8	0.9	17	152	3	0.14
170909	08:53:57.00	44°45.25'	111°03.13'	6.9	-0.3	9	165	4	0.08
170909	09:05:32.96	44°46.75'	111°00.86'	9.1	-0.2	10	144	2	0.10
170909	10:35:24.13	44°47.52'	111°00.37'	10.5	1.3	15	70	4	0.12
170909	12:32:28.65	44°45.16'	111°03.05'	7.5	--	6	185	4	0.14
170909	13:39:38.86	44°48.44'	111°05.14'	6.6	2.4W	16	153	2	0.13
170909	16:02:09.75	44°47.00'	111°05.54'	7.7	0.3	8	148	2	0.04

Table 2. Earthquakes in the Yellowstone Region: July 1–September 30, 2017

DATE	ORIGIN TIME	LATITUDE	LONGITUDE	DEPTH	MAG	NO	GAP	DMN	RMS
170909	16:15:49.23	44°47.04'	111°05.52'	7.8	0.6	13	128	2	0.08
170909	16:48:27.09	44°43.02'	111°04.26'	8.3	1.1	15	76	7	0.07
170909	16:56:46.84	44°46.22'	110°59.65'	7.0	0.2	8	188	2	0.15
170909	21:43:08.65	44°46.91'	111°00.85'	8.1	1.3	15	163	3	0.10
170911	18:18:47.63	44°48.91'	111°04.14'	6.2	0.4	8	266	4	0.08
170912	10:49:10.16	44°46.94'	111°00.49'	8.4	0.3	9	147	3	0.17
170912	10:49:16.87	44°47.13'	111°00.44'	7.9	1.0	11	169	3	0.11
170912	14:20:14.34	44°37.30'	110°20.08'	2.1	1.6	7	136	8	0.09
170912	14:35:52.37	44°47.05'	111°04.98'	6.8	-0.4	6	142	2	0.05
170913	10:50:38.24	44°46.25'	110°51.21'	7.9	2.3W	21	96	2	0.13
170913	18:51:51.54	44°43.48'	111°12.83'	1.6	0.3	5	154	3	0.13
170913	21:04:23.20	44°40.44'	110°04.54'	5.8*	1.8	10	147	14	0.21
170913	21:31:38.43	44°40.69'	110°02.63'	13.5	1.5	14	93	11	0.19
170913	22:45:28.59	44°40.95'	110°02.55'	13.0	1.4	12	92	11	0.24
170915	00:56:02.05	44°46.84'	110°54.40'	6.3	0.5	13	177	5	0.11
170915	08:03:00.12	44°46.62'	111°04.83'	11.2	0.6	12	128	3	0.11
170915	16:29:46.66	44°37.47'	110°21.25'	7.2	0.3	11	128	8	0.11
170915	21:47:50.58	44°44.41'	110°52.27'	8.2	0.8	11	94	6	0.13
170916	19:24:01.53	44°48.12'	111°01.25'	10.6	1.4	14	127	5	0.11
170917	05:34:15.22	44°17.62'	110°49.34'	7.5	2.0W	19	56	3	0.12
170917	05:38:44.05	44°18.14'	110°50.50'	7.5	3.2W	39	40	5	0.20
170917	06:05:32.21	44°18.31'	110°49.69'	7.5	1.1	9	166	4	0.21
170917	06:07:05.45	44°17.64'	110°49.06'	7.6	1.2	14	105	3	0.12
170917	06:11:44.55	44°18.44'	110°50.16'	7.3	1.0	10	183	5	0.28
170917	08:38:57.95	44°47.17'	111°01.55'	7.9	1.0	14	115	3	0.11
170917	15:45:22.58	44°47.42'	111°01.55'	10.0	1.1	14	171	4	0.09
170917	15:53:37.86	44°47.14'	111°01.13'	8.6	0.7	12	168	3	0.10
170918	03:17:33.11	44°46.42'	111°00.84'	6.3	0.1	9	241	2	0.11
170918	04:38:58.26	44°47.46'	111°01.49'	10.1	1.9W	18	99	4	0.13
170919	10:31:01.57	44°47.76'	111°01.09'	9.7	1.4	15	70	4	0.11
170919	17:44:02.01	44°46.55'	111°02.16'	6.3	0.3	12	151	3	0.14
170920	02:30:35.94	44°45.08'	110°58.54'	4.5	0.6	10	136	3	0.14
170920	06:48:28.34	44°47.26'	111°02.20'	6.4	0.8	11	169	4	0.10
170920	08:44:10.80	44°47.11'	111°01.35'	8.0	0.6	12	203	3	0.17
170920	12:25:39.65	44°48.37'	111°04.69'	7.8	1.0	14	180	2	0.13
170920	15:09:02.62	44°48.29'	111°04.62'	8.8	0.9	13	207	3	0.10
170922	02:25:58.17	44°46.53'	110°01.61'	7.1	1.3	6	126	10	0.02
170922	20:18:15.68	44°47.45'	111°01.10'	9.5	0.7	18	153	4	0.12
170922	21:02:20.52	44°47.51'	111°01.11'	8.5	0.9	17	154	4	0.13
170923	22:51:14.14	44°43.24'	111°18.24'	6.1	2.1W	18	151	5	0.19
170923	23:21:34.35	44°46.95'	111°07.62'	11.8	0.4	12	92	2	0.11
170924	05:52:19.94	44°47.09'	111°01.32'	8.1	0.6	14	167	3	0.12
170924	07:02:24.02	44°48.00'	111°01.70'	10.6	1.3	16	160	5	0.14
170924	21:48:39.78	44°47.85'	111°01.62'	11.1	2.2W	16	158	5	0.10
170925	00:43:07.15	44°47.86'	111°01.68'	10.7	1.0	14	158	5	0.10

Table 2. Earthquakes in the Yellowstone Region: July 1–September 30, 2017

DATE	ORIGIN TIME	LATITUDE	LONGITUDE	DEPTH	MAG	NO	GAP	DMN	RMS
170926	06:31:10.18	44°49.24'	110°39.08'	7.0	2.9W	31	70	12	0.20
170926	14:33:21.66	44°46.13'	110°59.19'	6.3	1.1	16	106	2	0.12
170926	15:01:51.30	44°46.04'	110°58.98'	6.2	0.4	12	136	2	0.12
170927	04:40:28.77	44°45.94'	110°46.41'	7.8	1.1	11	193	7	0.11
170929	22:19:51.62	44°25.18'	110°19.86'	7.8	1.0	15	65	5	0.12
170929	22:21:18.77	44°25.14'	110°19.80'	8.4	1.7W	14	65	5	0.11
170930	07:49:58.21	44°24.93'	110°19.91'	8.4	0.3	12	94	5	0.16
170930	10:30:09.23	44°40.63'	111°13.26'	7.6	0.3	9	104	4	0.11
170930	11:54:19.72	44°47.53'	111°01.33'	9.8	0.9	18	153	4	0.13
170930	20:46:26.05	44°25.29'	110°20.44'	2.4	0.6	9	132	6	0.14

number of earthquakes = 1,675

* indicates poor depth control

W indicates Wood-Anderson data used for magnitude calculation

Table 3
UNIVERSITY OF UTAH YELLOWSTONE SEISMIC NETWORK
Operating Seismograph Stations
September 30, 2017

UURSN	Location	SEED	SEED	No. of	Network	Latitude	Longitude	Elevation	Sensor	Digitizer	Telemetry	Sponsor
Code		Station	Channel	Channels	Code			(meters)				
B206*	Canyon206bwy2008, Yellowstone, WY	B206	EH[ZEN]	3	PB	44° 46.66'	110° 30.70'	2400	IEESE-S2	Q330	Digital	PBO
B207*	Madisn207bwy2007, Yellowstone, WY	B207	EH[ZEN]	3	PB	44° 37.14'	110° 50.91'	2182	IEESE-S2	Q330	Digital	PBO
B208*	Lakejn208bwy2008, Yellowstone, WY	B208	EH[ZEN]	3	PB	44° 33.61'	110° 24.09'	2406	IEESE-S2	Q330	Digital	PBO
B944*	Grantt944bwy2008, Yellowstone, WY	B944	EH[ZEN]	3	PB	44° 23.38'	110° 32.63'	2365	IEESE-S2	Q330	Digital	PBO
B945*	Pantr944swy2008, Yellowstone, WY	B945	EH[ZEN]	3	PB	44° 53.64'	110° 44.65'	2249	IEESE-S2	Q330	Digital	PBO
B950*	Norris950bwy2013, Yellowstone, WY	B950	EH[ZEN]	3	PB	44° 42.77'	110° 40.71'	2328	IEESE-S2	Q330	Digital	PBO
FLWY*	Flagg Ranch, WY	FLWY	BH[ZEN]	3	IW	44° 04.96'	110° 41.96'	2078	3ESP	RT-130	Digital	ANSS
H17A*	Grant Junction, Yellowstone, WY	H17A	BH[ZEN]	3	TA	44° 24.00'	110° 34.80'	2400	STS-2	Q330	Digital	NSF
IMW	Indian Meadows, WY	IMW	BH[ZEN]	3	IW	43° 53.58'	110° 56.58'	2670	3ESP	RT-130	Digital	ANSS
LKW*	Lake, WY	LKWY	BH[ZEN]	3	US	44° 33.91'	110° 24.00'	2424	STS-2	Q330	Digital	USGS
LOHW*	National Elk Refuge, WY	LOHW	BH[ZEN]	3	IW	43° 36.76'	110° 36.30'	2245	3ESP	RT-130	Digital	ANSS
MCID	Moose Creek, ID	MCID	EHZ	1	WY	44° 11.45'	111° 11.03'	2137	L4C	PSN	Analog	USGS
MOOW*	Moose Ponds, WY	MOOW	BH[ZEN]	3	IW	43° 44.92'	110° 44.69'	2128	3ESP	RT-130	Digital	ANSS
QLMZ*	Earthquake Lake, MT	QLMT	EHZ	1	MB	44° 49.84'	111° 25.80'	2064	L4C	-	Analog	MBMT
REDW*	Red-Top Meadows, WY	REDW	BH[ZEN]	3	IW	43° 21.74'	110° 51.18'	2322	3ESP	RT-130	Digital	ANSS
SNOW*	Snow King Mountain, WY	SNOW	BH[ZEN]	3	IW	43° 27.75'	110° 45.31'	2390	3ESP	RT-130	Digital	ANSS
TPAW*	Teton Pass, WY	TPAW	BH[ZEN]	3	IW	43° 29.41'	110° 57.04'	2512	3ESP	RT-130	Digital	ANSS
TPMZ*	Teepe Creek, MT	TPMT	EHZ	1	MB	44° 43.79'	111° 39.94'	2518	L4C	-	Analog	MBMT
YDC	Denny Creek, MT	YDC	EHZ	1	WY	44° 42.51'	111° 14.60'	2025	L4C	PSN	Analog	USGS
YEE	East Entrance (YNP), WY	YEE	HH[ZEN]	3	WY	44° 29.12'	109° 53.81'	2270	Compact	Taurus	Digital	USGS
YFT	Old Faithful (YNP), WY	YFT	HH[ZEN]	3	WY	44° 27.05'	110° 50.24'	2292	Compact	Taurus	Digital	USGS
			EN[ZEN]	3					Titan			
YGC	Grayling Creek, MT	YGC	EHZ	1	WY	44° 47.77'	111° 06.45'	2075	L4C	PSN	Analog	USGS
YHB	Horse Butte, MT	YHB	EHZ	1	WY	44° 45.07'	111° 11.71'	2157	L4C	ANSS-130	Digital	USGS
			HH[ZEN]	3					40T			
			EN[ZEN]	3					Titan			
YHH	Holmes Hill (YNP), WY	YHH	EHZ	1	WY	44° 47.30'	110° 51.03'	2717	S13	PSN	Analog	USGS
			HH[ZEN]	3					Trillium 120			
			EN[ZEN]	3					Titan			

UURSN	Location	SEED	SEED	No. of	Network	Latitude	Longitude	Elevation	Sensor	Digitizer	Telemetry	Sponsor
Code		Station	Channel	Channels	Code			(meters)				
YHL	Hebgen Lake, MT	YHL	HH[ZEN]	3	WY	44° 51.05'	111° 10.98'	2691	Trillium 120	Q330	Digital	USGS
			EN[ZEN]	3					Titan			
YHR	Hawk's Rest, WY	YHR	HH[ZEN]	3	WY	44° 06.36'	110° 04.90'	2976	Trillium 120	Q330	Digital	USGS
YJCZ	Joseph's Coat (YNP), WY	YJC	EH[ZEN]	3	WY	44° 45.33'	110° 20.95'	2684	S13	PSN	Analog	USGS
YLAZ	Lake Butte (YNP), WY	YLA	EHZ	1	WY	44° 30.76'	110° 16.12'	2580	L4C	PSN	Analog	USGS
YLT	Little Thumb Creek (YNP), WY	YLT	EHZ	1	WY	44° 26.25'	110° 35.28'	2439	L4C	PSN	Analog	USGS
YMC	Maple Creek (YNP), WY	YMC	EH[ZEN]	3	WY	44° 45.53'	111° 00.41'	2073	S13	PSN	Analog	USGS
YML	Mary Lake (YNP), WY	YML	EH[ZEN]	3	WY	44° 36.20'	110° 38.63'	2653	L4C	PSN	Analog	USGS
YMP	Mirror Plateau (YNP), WY	YMP	EHZ	1	WY	44° 44.38'	110° 09.40'	2774	S13	PSN	Analog	USGS
			HH[ZEN]	3					Trillium 120			
			EN[ZEN]	3					Titan			
YMR	Madison River (YNP), WY	YMR	HH[ZEN]	3	WY	44° 40.12'	110° 57.90'	2149	Trillium 120	Q330	Digital	USGS
			EN[ZEN]	3					Titan			
YMS	Mount Sheridan (YNP), WY	YMS	EHZ	1	WY	44° 15.84'	110° 31.67'	3106	L4C	PSN	Analog	USGS
YMV	Mammoth Vault (YNP), WY	YMV	EHZ	1	WY	44° 58.42'	110° 41.33'	1829	L4C	PSN	Analog	USGS
YNE	Northeast Entrance (YNP), WY	YNE	HH[ZEN]	3	WY	45° 00.46'	110° 00.48'	2343	Compact	ANSS-130	Digital	USGS
YNM	Norris Museum (YNP), WY	YNM	HH[ZEN]	3	WY	44° 43.59'	110° 42.22'	2311	Trillium 240	Q330	Digital	USGS
YNR	Norris Junction (YNP), WY	YNR	HH[ZEN]	3	WY	44° 42.93'	110° 40.75'	2336	Trillium 120	Q330	Digital	USGS
			EN[ZEN]	3					Titan			
YPC	Pelican Cone (YNP), WY	YPC	EHZ	1	WY	44° 38.88'	110° 11.55'	2932	L4C	PSN	Analog	USGS
YPK	Parker Peak (YNP), WY	YPK	EH[ZEN]	3	WY	44° 43.91'	109° 55.32'	2897	L4C	PSN	Analog	USGS
YPM	Purple Mountain (YNP), WY	YPM	EHZ	1	WY	44° 39.43'	110° 52.12'	2582	L4C	PSN	Analog	USGS
YPP	Pitchstone Plateau (YNP), WY	YPP	EHZ	1	WY	44° 16.26'	110° 48.27'	2707	S13	PSN	Analog	USGS
			HH[ZEN]	3					Trillium 120			
			EN[ZEN]	3					Titan			
YSB	Soda Butte (YNP), WY	YSB	EHZ	1	WY	44° 53.04'	110° 09.06'	2072	L4C	PSN	Analog	USGS
YTP	The Promontory (YNP), WY	YTP	EHZ	1	WY	44° 23.51'	110° 17.10'	2384	L4	PSN	Analog	USGS
			HH[ZEN]	3					Trillium 120			
			EN[ZEN]	3					Titan			
YUF	Upper Falls (YNP), WY	YUF	HH[ZEN]	3	WY	44° 42.76'	110° 30.71'	2394	Compact	ANSS-130	Digital	USGS
			EN[ZEN]	3					Titan			
YWB	West Boundary (YNP), WY	YWB	EHZ	1	WY	44° 36.35'	111° 06.05'	2310	L4C	PSN	Analog	USGS

* Station operated by another agency and recorded as part of the Yellowstone Seismic Network
Network Statistics: 147 data channels from 46 stations were being recorded at the end of this report period

EXPLANATION OF TABLE

UURSN Code: Station code formerly used in routine processing. Owing to software limitations, the station code may not be the same code used by the original operator. For multi-component stations, the vertical, east-west, and north-south high gain (low gain) components are identified by an appended Z(V), E(L), and N(M), respectively, in UUSS phase files.

Location: General description of station location. YNP = Yellowstone National Park.

SEED Station: The SEED (Standard for the Exchange of Earthquake Data) station code used by the original operator.

SEED Channel: The SEED format uses three letters to name seismic channels. See <<http://www.iris.edu/manuals/SEEDManual_V2.4.pdf>> for information about the SEED channel naming convention. Relevant sections are reproduced below. In the SEED convention, each letter describes one aspect of the instrumentation and its digitization. The first letter specifies the general sampling rate and the response band of the instrument. Band codes used in this table include:

Band Code	Band Type	Sample Rate	Corner Period
E	Extremely short period	≥ 80 Hertz	< 10 seconds
H	High broadband	≥ 80 Hertz	≥ 10 seconds
B	Broadband	≥ 10 to < 80 Hertz	≥ 10 seconds
S	Short period	≥ 10 to < 80 Hertz	< 10 seconds

The second letter specifies the family to which the sensor belongs. Sensor families used in this table are:

Instrument Code	Description
H	High gain seismometer
L	Low gain seismometer
N	Accelerometer

The third letter specifies the physical configuration of the members of a multiple axis instrument package. Channel orientations used in this table are:

Z E N Traditional (Vertical, East-West, North-South)

Number of Channels: Total number of waveform channels recorded.

Network Code: The FDSN (Federation of Digital Seismographic Networks) registered network code. See <<http://www.iris.edu/dms/nodes/dmc/services/network_codes>> for information about registered seismograph network codes. Network codes referenced in this table:

Network Code	Network name; Network operator or responsible organization
IE	Idaho National Laboratory Seismic Network
IU	IRIS/USGS Network; USGS Albuquerque Seismological Laboratory
IW	Intermountain West Network, U.S. Geological Survey

MB	Montana Regional Seismic Network; Montana Bureau of Mines and Geology
PB	Plate Boundary Observatory
UU	University of Utah Regional Network; University of Utah
US	US National Network; USGS National Earthquake Information Center
WY	Yellowstone Wyoming Seismic Network; University of Utah

Latitude, Longitude: Sensor location in degrees and decimal minutes; North latitude, West longitude.

Elevation: Sensor altitude in meters above sea level.

Sensor	Description
L4, L4C	Mark Products L4 or L4C short-period seismometer
S13, 18300	Geotech S13 or 18300 short-period seismometer
Ranger	Kinometrics Ranger short-period seismometer
40T	Guralp CMG-40T broadband seismometer
3T	Guralp CMG-3T broadband seismometer
3ESP	Guralp CMG-3ESP broadband seismometer
STS-2	Streckheisen STS-2 broadband seismometer
FBA23	Kinometrics FBA-23 accelerometer
EpiSensor	Kinometrics EpiSensor accelerometer
Applied Mems	Applied Mems accelerometer
PA-23	Geotech PA-23 accelerometer
Compact	Nanometrics Compact broadband seismometer
Trillium 120	Nanometrics Trillium 120 broadband seismometer
Trillium 240	Nanometrics Trillium 240 broadband seismometer
Titan	Nanometrics Titan accelerometer
Observer	Refraction Technology (REF TEK) Model 151 Observer broadband seismometer
IESE-S2	Institute of Earth Science and Engineering S-2 model borehole seismometer

Digitizer	Description
K2	Kinometrics Altus Series K2 (19-bit resolution field digitizer)
Etna	Kinometrics Altus Series Etna (18-bit resolution field digitizer)
72A-07	Refraction Technology (REF TEK) model 72A-07 (24-bit field digitizer)
72A-08	Refraction Technology (REF TEK) model 72A-08 (24-bit field digitizer)
ANSS-130	Refraction Technology (REF TEK) model 130-ANSS/02 (24-bit resolution field digitizer)
RT-130	Refraction Technology (REF TEK) model RT-130 (24-bit resolution field digitizer)
Q330	Quanterra, Inc Q330 digitizer (24-bit resolution field digitizer)
SMART-24	Geotech SMART-24 digitizer (24-bit resolution field digitizer)
PSN	PSN-ADC-SERIAL version III (16-bit resolution field digitizer)
Basalt	Kinometrics Basalt (24-bit resolution field digitizer)
Taurus	Nanometrics Taurus (24-bit resolution field digitizer)

Telemetry	Description
Analog	Data transmission is analog along part of the transmission pathway

Digital Data are converted to digital form at the station site
None On-site recording system

Sponsor (or Operator for stations marked by * in preceding columns)

USGS U.S. Geological Survey
Utah State of Utah
ANSS Advanced National Seismic System
INL Idaho National Laboratory
MBMT Montana Bureau of Mines and Geology
PBO Plate Boundary Observatory
NSF National Science Foundation

Network Changes During July 1–September 30, 2017

None