

EARTHQUAKE ACTIVITY IN THE YELLOWSTONE REGION

Preliminary Epicenters

April 1 – June 30, 2017

Prepared by the University of Utah Seismograph Stations and funded by
the U.S. Geological Survey (Cooperative Agreement No. G16AC00029)

September 6, 2017

Foreword and Data Explanation

This report contains an epicenter map (Figure 1) and listings of earthquakes (Tables 1 and 2) detected and located in the Yellowstone region (lat. 44° 00' – 45° 10' N, long. 109° 45' – 111° 30' W). The computer program HYPOINVERSE-2000 (F. W. Klein, 2012, U.S. Geological Survey Open-File Report 02-171 revised) was used to process the earthquake data. This report also includes maps and a table of operating seismograph stations in the University of Utah's Yellowstone seismic network (Figure 2, Table 3).

The earthquake listing in Table 2 is estimated to be systematically complete above magnitude 1.5 within Yellowstone. *These data are preliminary—both the locations and magnitudes in this table are subject to revision.*

The following data are listed for each earthquake in Table 2:

- Date (yyymmdd) and origin time in Coordinated Universal Time (UTC). To convert to local time, subtract seven hours for Mountain Standard Time (MST) and six hours for Mountain Daylight Time (MDT). During the report period, local time was MDT.
- Earthquake location coordinates in degrees and minutes of north latitude and west longitude, and depth in kilometers below sea level. Note that prior to October 1, 2012 the earthquake depths in these quarterly reports were computed relative to a datum of 2000 m above sea level.
- "*" indicates poor depth resolution: no recording stations within 10 km or twice the depth.
- MAG, the computed Richter local magnitude (M_L) for each earthquake. "W" indicates that peak amplitude measurements from Wood-Anderson records were used. Otherwise, the estimate is calculated from signal durations and is more correctly identified as coda magnitude (M_C). The notation "--" indicates that a reliable magnitude estimate could not be made.
- NO, the number of P and S readings used in the solution.
- GAP, the largest azimuthal separation in degrees between recording stations used in the solution.
- DMN, the epicentral distance in kilometers to the closest station.
- RMS, the weighted root-mean-square of the travel-time residuals in seconds:

$$RMS = \left(\frac{\sum_i (W_i R_i)^2}{\sum_i (W_i)^2} \right)^{\frac{1}{2}}$$

where: R_i is the observed minus the computed arrival time for the i -th P or S reading, and W_i is the relative weight given to the i -th P or S arrival time (0.0 for no weight through 1.0 for full weight).

EARTHQUAKE ACTIVITY IN THE YELLOWSTONE REGION
April 1 – June 30, 2017

by J. Farrell, R. Burlacu, P. M. Roberson, J. M. Hale, J. Stanley, and A. Parapuzha
with contributions by
K. D. Koper, R. B. Smith, J. C. Pechmann, and K. L. Pankow

University of Utah Seismograph Stations
115 South 1460 East, Room 107 FASB
Salt Lake City, UT 84112-0102
Tele: (801) 581-6274 FAX: (801) 585-5585
email: jamie.farrell@utah.edu
URL: <http://www.seis.utah.edu> (aka quake.utah.edu)

During the three-month period April 1 through June 30, 2017, the University of Utah Seismograph Stations (UUSS) located 1,328 earthquakes within the Yellowstone region (Figure 1). The total includes 1 earthquake in the magnitude 4 range, 5 earthquakes in the magnitude 3 range and 94 earthquakes in the magnitude 2 range. The largest event to occur during this period was a magnitude 4.4 earthquake on June 16th. Seven earthquakes were reported felt in the region during the report period (see Table 1, a cumulative tabulation of earthquakes that were felt in the Yellowstone region during 2017). Additional information on earthquakes within the Yellowstone region is available from the University of Utah Seismograph Stations.

Online Information

A complete copy of this report, including maps and the earthquake catalog, is available on the UUSS web site at <http://quake.utah.edu/earthquake-center/quarterly-seismicity-reports>.

Note: On October 1, 2012 UUSS began using the ANSS Quake Monitoring System (AQMS) software package for data acquisition and data processing. The primary effect on the data reported herein comes from computing the earthquake locations with a newer version of the computer program HYPOINVERSE-2000 (F. W. Klein, 2012, U.S. Geological Survey Open-File Report 02-171 revised) and a revised and expanded set of velocity models. As implemented at UUSS, this new version of the location program accounts for station elevation differences more accurately and reports focal depths relative to sea level instead of the 2000 m elevation datum used previously.

For earthquakes of magnitude 3 and larger in the Yellowstone region, the U. S. Geological Survey automatically posts a Community Internet Intensity Map (CIIM) on its "Did You Feel It?" web page at <http://earthquake.usgs.gov/earthquakes/dyfi/>. We encourage anyone who feels an earthquake to report their observations on this interactive web site; felt information is available by zip code on the CIIM site or can be obtained from UUSS directly.

Earthquakes of Magnitude 3.0 or Larger

M _L 3.1	June 12	10:46 MDT	9.4 mi NNE of West Yellowstone, MT
M _L 3.2	June 12	16:54 MDT	8.9 mi NNE of West Yellowstone, MT
M _W 4.4	June 15	17:48 MDT	8.9 mi NNE of West Yellowstone, MT
M _L 3.1	June 15	19:03 MDT	8.5 mi NNE of West Yellowstone, MT
M _L 3.0	June 16	16:48 MDT	9.1 mi NNE of West Yellowstone, MT
M _L 3.0	June 18	21:12 MDT	9.4 mi NNE of West Yellowstone, MT

Notable Swarm Seismicity

During the report period, there were five earthquake swarms in the Yellowstone region. For reporting purposes, we use the Mogi definition [Mogi, 1963] of a swarm and require each swarm to have ten or more earthquakes. Note that typically, around 50% of Yellowstone earthquakes occur as part of a seismic swarm [Farrell et al., 2009]. The June 12th swarm is the 2nd largest swarm ever recorded in Yellowstone and is ongoing past the end of this reporting period.

- A. A swarm of 10 earthquakes ($0.3 \leq M \leq 2.3$) occurred about 9.5 miles NNE of West Yellowstone, MT from April 25th – 27th.
- B. A swarm of 26 earthquakes ($0.0 \leq M \leq 2.9$) occurred about 8.7 miles NNE of West Yellowstone, MT from May 5th – 8th.
- C. A swarm of 21 earthquakes ($-0.5 \leq M \leq 2.7$) occurred about 17.8 miles NE of West Yellowstone, MT on June 2nd.
- D. A swarm of 1,010 earthquakes ($-0.6 \leq M \leq 4.4$) occurred about 8.9 miles NNE of West Yellowstone, MT from June 12th – 30th. ****
- E. A swarm of 54 earthquakes ($0.0 \leq M \leq 2.3$) occurred about 14.7 miles NE of West Yellowstone, MT from June 13th – 15th.

These swarms are labeled in Figure 1.

**** This swarm is ongoing to the present time

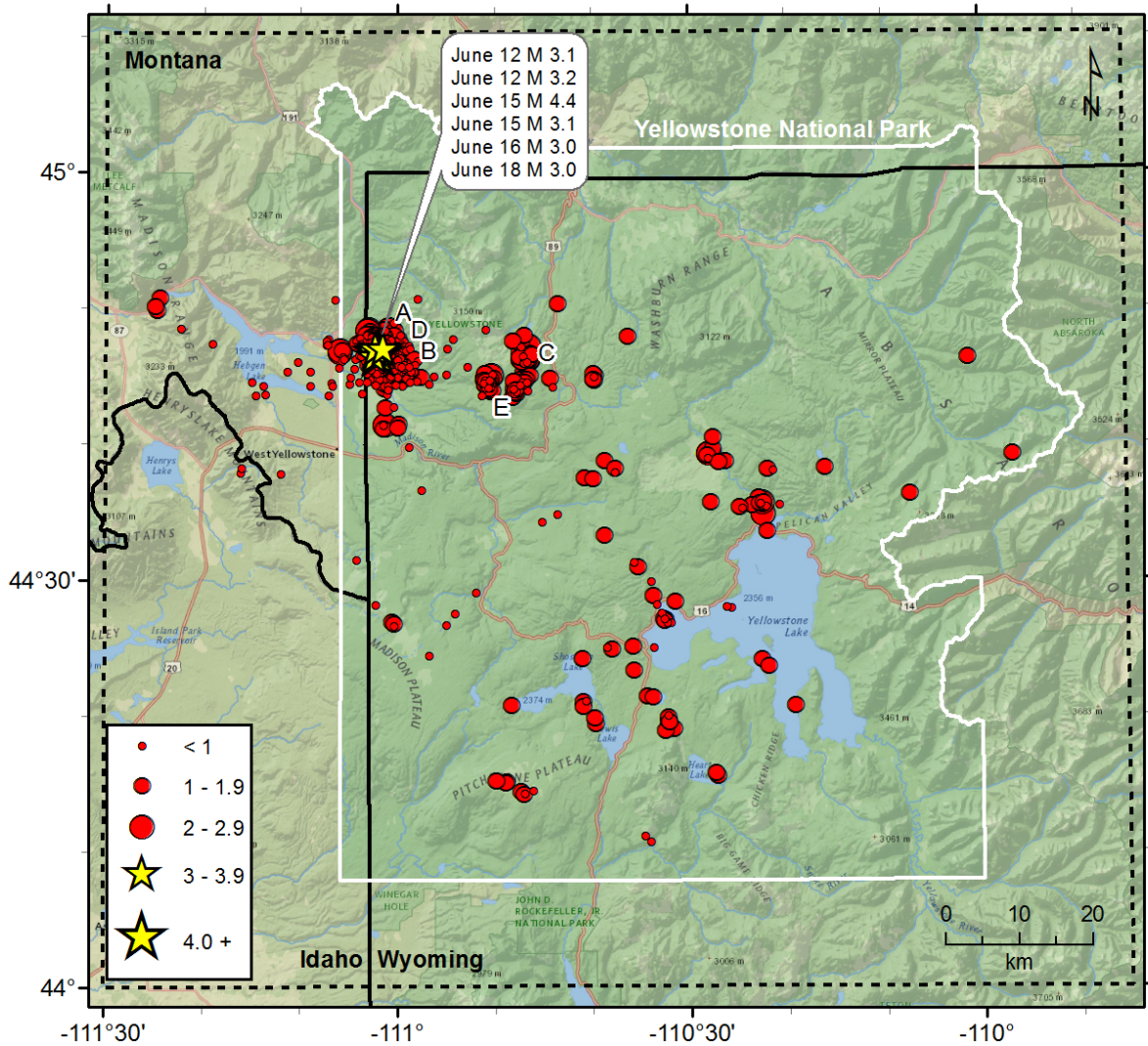


Figure 1. Epicenters of earthquakes located by the University of Utah Seismograph Stations, April 1, 2017 through June 30, 2017. Earthquake swarms (labeled A-E) are discussed in the text.

Table 1
EARTHQUAKES FELT IN THE YELLOWSTONE REGION
January 1, 2017 to June 30, 2017

Date	Time†	Felt Information‡	Latitude	Longitude	Magnitude§
January 20	09:37 MST 16:37 UTC	Yellowstone. Felt (II) at West Yellowstone, MT.	44° 48.07'	110° 59.06'	M _L 3.3
June 15 June 16	18:48 MDT 00:48 UTC	Yellowstone. Felt (IV) at West Yellowstone, MT.	44° 46.86'	111° 01.98'	M _W 4.4
June 15 June 16	19:03 MDT 01:03 UTC	Yellowstone. Felt (II) at West Yellowstone, MT.	44° 46.56'	111° 02.34'	M _L 3.1
June 15 June 16	19:46 MDT 01:46 UTC	Yellowstone. Felt (III) at West Yellowstone, MT.	44° 47.22'	111° 02.22'	M _L 2.9
June 16	07:17 MDT 13:17 UTC	Yellowstone. Felt (II) at West Yellowstone, MT.	44° 47.28'	111° 01.20'	M _L 2.6
June 18 June 19	21:12 MDT 03:12 UTC	Yellowstone. Felt (IV) at West Yellowstone, MT.	44° 47.16'	111° 01.50'	M _L 3.0
June 26	16:35 MDT 22:35 UTC	Yellowstone. Felt (III) at West Yellowstone, MT.	44° 48.24'	111° 01.26'	M _L 2.7

† Times are listed both as Local Time—Mountain Standard Time (MST) or Mountain Daylight Time (MDT)—and as Coordinated Universal Time (UTC).

? Indicates on-line reports that appear questionable given the distance from the source

‡ *CIIM* indicates the availability of a Community Internet Intensity Map

(<http://earthquake.usgs.gov/earthquakes/dyfi>), compiled by the U.S. Geological Survey (USGS); *ShakeMap* indicates the availability of computer-generated maps of ground-shaking (<http://quake.utah.edu>), produced by the University of Utah Seismograph Stations (UUSS). Roman numerals correspond to the Modified Mercalli intensity scale. Unless otherwise indicated, felt information is from the USGS (1) CIIM reports and/or (2) PDE Monthly (or) Weekly Listing Files (<http://earthquake.usgs.gov/data/pde.php>).

§ Richter local magnitude (M_L) or coda magnitude (M_C) determined by UUSS. If labeled “NEIC,” data are from the National Earthquake Information Center of the USGS.

Yellowstone Seismic Network

June 30, 2017

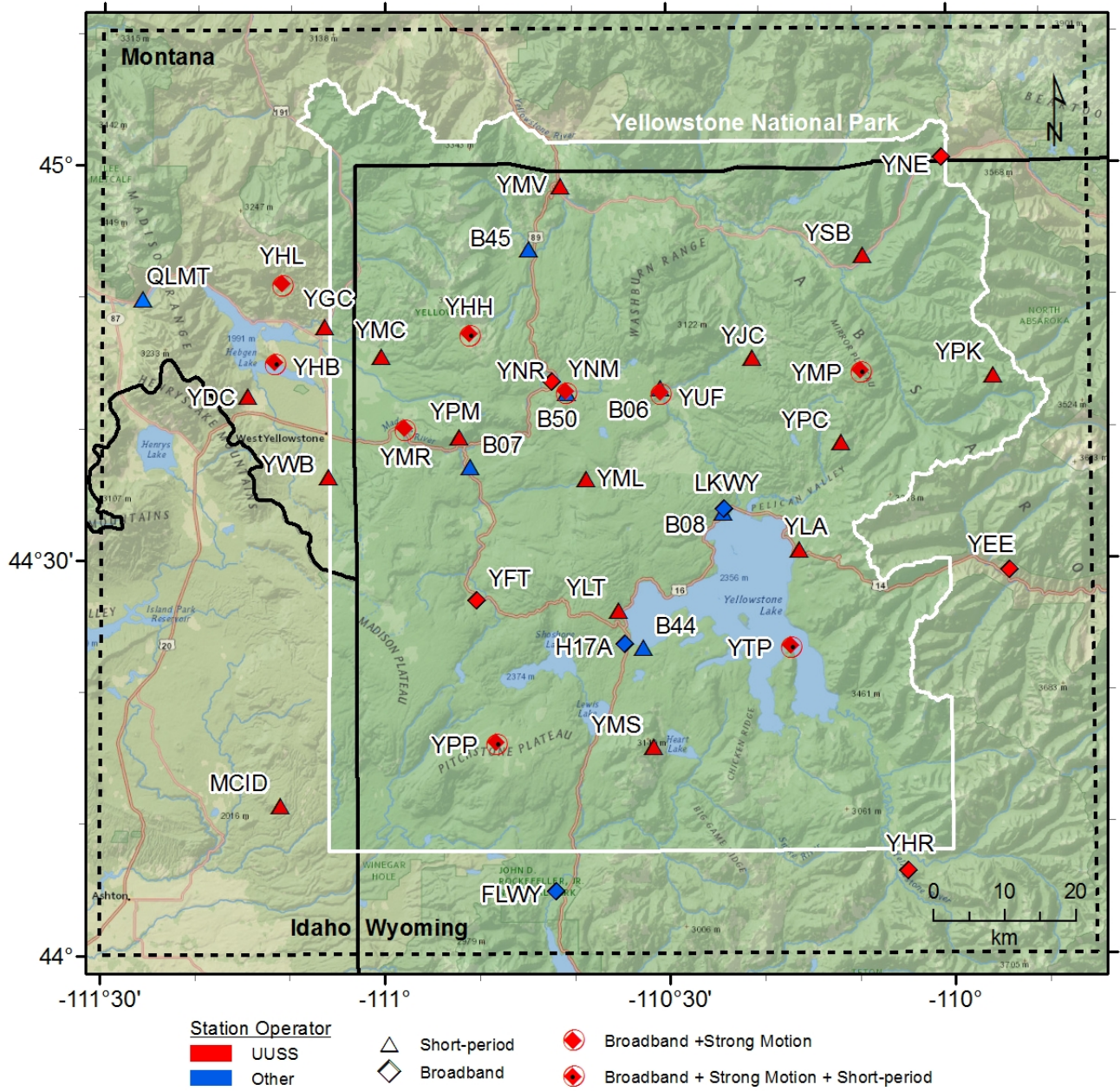


Figure 2. Seismograph Stations of the Yellowstone Seismic Network as of June 30, 2017.

Table 2. Earthquakes in the Yellowstone Region: April 1–June 30, 2017

DATE	ORIGIN TIME	LATITUDE	LONGITUDE	DEPTH	MAG	NO	GAP	DMN	RMS
170401	08:05:49.22	44°46.90'	111°05.90'	8.0	2.2W	19	108	2	0.12
170401	08:06:45.33	44°46.79'	111°05.88'	7.7	2.3W	22	107	2	0.12
170401	08:11:26.87	44°46.16'	111°05.73'	6.6	0.9	12	114	3	0.10
170401	08:32:42.17	44°45.07'	110°46.41'	3.5	1.1W	12	171	6	0.07
170401	09:07:07.11	44°46.32'	111°05.52'	7.7	0.7	13	107	3	0.05
170403	06:06:57.67	44°39.65'	110°27.55'	4.0	1.7W	16	117	7	0.14
170403	07:04:55.44	44°31.01'	110°35.31'	4.2	1.8W	17	120	9	0.07
170403	15:07:26.16	44°45.20'	110°54.94'	4.8	0.5	10	136	6	0.07
170404	13:03:41.16	44°46.94'	111°05.69'	7.8	1.7W	17	132	2	0.15
170404	14:34:47.07	44°45.08'	110°50.25'	5.0	0.9	10	121	4	0.07
170405	00:49:33.82	44°44.85'	110°50.12'	4.0	1.4W	11	116	5	0.09
170405	00:56:45.40	44°45.13'	110°50.26'	5.1	0.7	8	121	4	0.09
170406	02:40:51.56	44°46.41'	111°05.66'	7.5	0.9	12	106	3	0.12
170406	15:20:10.71	44°40.51'	110°27.56'	3.0	1.4W	10	85	6	0.15
170406	20:52:53.47	44°44.57'	110°46.95'	2.2	1.0W	11	156	7	0.12
170407	01:24:24.86	44°45.90'	110°46.94'	2.8	1.4W	13	169	6	0.14
170408	10:10:43.74	44°46.45'	111°00.79'	7.7	0.5	11	153	2	0.10
170409	04:42:43.00	44°47.40'	110°59.69'	4.4	1.0W	11	172	4	0.08
170412	16:37:14.32	44°43.59'	111°07.07'	8.0	0.7	6	167	10	0.07
170413	09:15:49.13	44°15.65'	110°27.24'	4.1	1.3	15	183	6	0.07
170413	09:15:49.15	44°15.83'	110°27.41'	4.2	1.3	13	182	6	0.10
170413	11:06:17.65	44°14.47'	110°47.38'	6.7	1.7W	11	143	4	0.15
170416	08:21:06.69	44°43.79'	111°03.63'	8.6	0.7W	10	120	5	0.10
170416	08:34:37.97	44°43.76'	111°03.65'	7.6	0.8W	13	98	5	0.19
170416	09:41:37.11	44°46.33'	110°01.31'	6.9	1.7	7	125	9	0.06
170417	08:54:27.84	44°29.92'	110°33.95'	3.2	0.7W	8	138	7	0.08
170417	18:32:26.46	44°31.56'	111°04.26'	12.7	0.7	7	139	9	0.06
170418	01:47:10.89	44°24.48'	110°56.74'	6.0*	0.9W	15	152	19	0.17
170418	03:40:44.78	44°36.35'	110°07.30'	5.9	1.7W	11	161	7	0.08
170421	01:37:43.16	44°49.83'	111°24.78'	11.3	1.1	9	93	1	0.17
170421	07:35:16.85	44°34.89'	110°22.46'	3.5	2.4W	21	70	3	0.10
170422	15:35:20.40	44°26.82'	111°00.39'	2.1*	1.3W	10	131	14	0.18
170422	15:42:31.71	44°26.95'	111°00.62'	10.5	1.5W	18	132	14	0.22
170422	16:00:29.93	44°26.67'	111°00.41'	3.9*	0.9W	9	131	14	0.10
170423	14:04:34.96	44°36.69'	110°57.58'	11.1	0.4	7	117	6	0.09
170424	06:52:59.10	44°42.80'	111°00.36'	11.2	0.6W	14	105	5	0.16
170425	13:38:37.42	44°50.15'	111°25.01'	11.1	1.0	7	107	1	0.12
170425	21:18:15.31	44°46.82'	111°00.72'	5.4	0.6	18	144	2	0.13
170425	23:04:56.00	44°45.71'	110°52.84'	4.2	0.5W	7	130	4	0.03
170426	03:41:51.46	44°46.57'	111°00.35'	5.1	0.3	7	183	2	0.03
170426	13:01:04.05	44°46.90'	111°00.97'	5.9	1.3W	17	145	3	0.15
170426	20:06:38.40	44°47.11'	111°00.77'	5.0	0.6W	12	149	3	0.12
170427	08:15:07.81	44°37.91'	111°16.17'	10.0	0.3	9	119	9	0.07
170427	08:15:07.84	44°38.23'	111°16.00'	10.9	0.2	10	117	8	0.07
170427	09:31:05.57	44°28.26'	111°02.30'	6.2*	-0.2	8	163	16	0.09

Table 2. Earthquakes in the Yellowstone Region: April 1–June 30, 2017

DATE	ORIGIN TIME	LATITUDE	LONGITUDE	DEPTH	MAG	NO	GAP	DMN	RMS
170427	21:47:29.32	44°47.04'	111°00.74'	5.6	1.3W	22	115	3	0.14
170427	21:56:37.18	44°46.98'	111°00.78'	6.7	2.2W	26	147	3	0.15
170427	22:11:41.33	44°47.43'	111°00.96'	9.5	2.3W	28	70	4	0.19
170427	22:41:12.02	44°46.55'	111°00.72'	5.3	0.7W	13	141	2	0.14
170427	22:41:30.83	44°46.59'	111°01.01'	5.2	1.0W	11	161	2	0.14
170427	22:41:47.56	44°46.68'	111°00.36'	4.8	0.7W	9	143	2	0.12
170428	10:35:43.61	44°23.67'	110°21.92'	5.3	1.2	8	176	6	0.04
170428	21:42:32.50	44°24.20'	110°22.64'	4.4	1.4	13	117	7	0.10
170429	02:11:17.27	44°48.06'	110°46.92'	3.0	1.1W	14	218	6	0.13
170429	06:01:38.05	44°26.75'	110°54.96'	3.5	0.7W	7	166	6	0.15
170429	06:17:43.63	44°45.04'	110°39.68'	3.5	1.8W	13	181	4	0.16
170429	06:17:59.22	44°45.02'	110°39.79'	2.1	-0.2	12	180	4	0.16
170429	06:21:01.92	44°45.21'	110°39.88'	3.5	1.7W	13	183	4	0.09
170429	06:21:42.52	44°44.71'	110°39.79'	4.4	1.6W	16	159	4	0.09
170429	06:21:42.53	44°44.82'	110°39.86'	4.0	1.6W	17	159	4	0.13
170430	01:18:57.37	44°50.73'	111°24.50'	10.7	1.2	9	122	2	0.12
170503	05:42:19.34	44°46.27'	110°58.32'	5.4	1.0W	12	139	3	0.12
170503	15:04:04.82	44°39.82'	110°58.80'	5.0	0.8	10	86	1	0.23
170505	06:22:07.73	44°46.03'	110°59.99'	7.5	1.8W	20	135	1	0.14
170505	12:21:43.00	44°45.96'	110°59.93'	7.3	1.2W	16	135	1	0.15
170505	12:24:47.13	44°46.04'	110°59.97'	7.5	1.9W	22	106	1	0.15
170505	13:37:22.85	44°20.81'	110°48.31'	8.0	1.3W	12	156	8	0.16
170505	22:26:59.98	44°46.15'	110°59.85'	8.3	2.3W	19	111	1	0.15
170505	22:27:53.01	44°45.35'	110°58.88'	5.0	1.3W	14	148	2	0.11
170506	05:58:38.56	44°45.74'	110°59.58'	6.7	--	7	131	1	0.09
170506	05:58:39.01	44°45.62'	111°00.24'	8.7	2.6W	27	129	0	0.18
170506	06:31:06.18	44°46.03'	111°00.20'	7.3	1.3W	16	134	1	0.17
170506	06:36:01.51	44°46.10'	111°00.07'	6.9	1.2W	13	136	1	0.12
170506	08:29:57.92	44°45.46'	110°59.50'	5.6	1.0W	12	153	1	0.10
170506	11:59:55.65	44°45.88'	110°59.97'	7.1	1.1W	13	133	1	0.10
170506	12:17:29.68	44°31.37'	110°35.68'	5.6	0.9W	14	90	10	0.08
170506	14:00:53.38	44°45.83'	110°59.86'	6.9	0.4	13	132	1	0.15
170506	15:45:56.36	44°46.00'	111°00.03'	8.1	2.0W	21	134	1	0.14
170506	15:46:51.77	44°46.16'	110°59.91'	6.9	1.1W	18	137	1	0.13
170507	00:10:39.20	44°45.28'	110°58.95'	4.9	0.6	11	144	2	0.08
170507	02:24:15.50	44°45.37'	111°11.38'	7.5	0.7	10	140	1	0.13
170507	11:49:10.92	44°46.05'	111°00.01'	7.7	2.3W	25	135	1	0.15
170507	12:00:55.09	44°46.17'	110°59.86'	7.2	1.1W	17	137	1	0.13
170507	13:03:46.27	44°45.89'	111°00.15'	7.7	2.9W	28	133	1	0.14
170507	13:21:06.21	44°45.02'	110°59.06'	3.4	0.3	8	152	2	0.10
170507	13:21:21.49	44°45.84'	110°59.87'	6.6	0.0	9	132	1	0.12
170507	13:55:37.57	44°45.86'	110°59.91'	7.8	1.8W	20	133	1	0.15
170507	18:48:00.86	44°35.73'	110°22.53'	4.2	2.3W	12	131	4	0.13
170507	19:04:24.07	44°35.53'	110°23.55'	5.1	1.8W	10	165	4	0.15
170507	19:05:00.56	44°35.39'	110°24.84'	2.0	1.5W	7	154	3	0.09

Table 2. Earthquakes in the Yellowstone Region: April 1–June 30, 2017

DATE	ORIGIN TIME	LATITUDE	LONGITUDE	DEPTH	MAG	NO	GAP	DMN	RMS
170507	19:06:08.98	44°35.62'	110°22.66'	4.6	0.5	7	174	4	0.12
170507	19:10:43.94	44°35.34'	110°24.55'	4.2	0.3	8	157	3	0.19
170507	19:12:53.19	44°35.43'	110°22.10'	3.7	0.6	11	176	4	0.13
170507	20:04:00.11	44°45.78'	110°59.68'	7.4	1.3W	15	132	1	0.12
170507	20:53:45.39	44°46.06'	110°59.87'	7.7	1.4W	14	135	1	0.10
170507	22:30:05.77	44°45.65'	110°59.64'	5.8	0.8	10	173	1	0.10
170508	00:02:48.36	44°34.35'	110°45.13'	9.1	0.2	7	140	9	0.13
170508	04:15:50.00	44°45.83'	111°00.09'	7.7	1.6W	18	132	1	0.16
170508	10:27:08.22	44°46.11'	111°00.31'	6.8	1.1W	10	135	1	0.13
170508	14:16:55.27	44°46.22'	111°00.35'	6.5	1.0W	13	137	1	0.15
170508	17:54:32.67	44°38.08'	110°21.45'	3.6	0.7	11	99	8	0.09
170509	01:17:36.47	44°38.19'	110°21.98'	5.2	1.4W	11	95	9	0.14
170511	00:01:06.54	44°47.74'	110°54.31'	5.9	0.7	11	174	4	0.08
170513	16:10:46.77	44°37.55'	110°40.85'	5.0	1.3W	19	73	4	0.20
170514	07:58:46.87	44°42.70'	111°01.32'	11.9	1.7W	18	61	5	0.11
170515	17:42:19.67	44°44.59'	110°46.64'	4.8	0.4	13	160	8	0.12
170515	18:15:08.91	44°44.61'	110°46.71'	4.7	0.8W	9	159	8	0.11
170515	18:15:18.12	44°43.96'	110°46.58'	2.7	-0.1	7	146	8	0.12
170516	07:50:57.71	44°29.16'	110°51.92'	5.2	0.8W	7	143	5	0.14
170516	17:51:27.56	44°37.49'	110°39.89'	4.6	1.3W	13	90	3	0.11
170519	15:08:29.12	44°43.59'	111°14.63'	6.3	0.5	9	204	2	0.07
170519	15:45:41.85	44°44.56'	111°06.82'	10.1	0.6	12	72	6	0.09
170519	15:50:29.16	44°44.35'	111°06.67'	11.1	0.3	7	98	9	0.10
170520	06:54:25.35	44°44.39'	110°47.40'	5.0	0.6W	11	148	7	0.09
170520	07:04:58.57	44°44.78'	110°46.75'	8.2	1.0W	15	163	7	0.18
170520	07:09:29.83	44°44.58'	110°47.16'	5.8	0.6W	10	154	7	0.14
170520	09:34:32.67	44°28.47'	110°31.49'	4.0	1.1W	13	102	7	0.10
170521	06:18:01.28	44°25.08'	110°38.56'	0.2	0.9	5	155	5	0.11
170521	06:18:55.57	44°24.93'	110°38.07'	0.8	1.2W	7	164	4	0.11
170521	14:51:55.46	44°28.03'	110°25.75'	2.8*	0.6	10	115	11	0.10
170521	14:52:20.52	44°28.07'	110°26.23'	2.6*	-0.3	8	141	11	0.13
170521	15:26:51.49	44°38.79'	110°26.30'	4.2	1.8W	16	126	9	0.15
170522	23:59:34.82	44°39.20'	110°28.23'	2.3	1.2W	15	110	7	0.11
170523	00:00:35.90	44°38.98'	110°28.06'	2.5	0.3	8	174	8	0.23
170523	00:06:12.66	44°39.35'	110°28.03'	4.5	2.0W	20	67	7	0.12
170523	02:20:35.30	44°39.32'	110°28.02'	3.9	2.2W	23	66	7	0.13
170523	04:05:12.93	44°33.32'	110°38.74'	12.1	1.2W	6	206	6	0.21
170523	04:06:02.87	44°37.93'	110°37.67'	4.2	0.8W	10	88	3	0.13
170523	11:45:44.65	44°41.23'	110°59.99'	7.3	1.1W	17	56	3	0.18
170523	14:14:18.81	44°47.85'	111°02.22'	8.2	1.4W	21	155	5	0.19
170523	21:44:53.54	44°37.86'	111°12.00'	10.7	0.3	6	163	8	0.08
170524	04:48:40.29	44°47.67'	111°02.56'	8.1	1.7W	21	152	5	0.16
170524	04:49:09.46	44°47.57'	111°02.34'	7.4	0.4	14	151	5	0.12
170524	06:52:03.14	44°47.52'	111°02.47'	6.3	0.5	8	165	5	0.14
170524	07:00:10.50	44°21.41'	110°33.87'	4.7	1.2W	13	85	4	0.08

Table 2. Earthquakes in the Yellowstone Region: April 1–June 30, 2017

DATE	ORIGIN TIME	LATITUDE	LONGITUDE	DEPTH	MAG	NO	GAP	DMN	RMS
170524	07:01:29.08	44°21.48'	110°34.40'	5.1	1.5W	17	80	4	0.15
170525	05:21:18.90	44°46.93'	111°01.50'	5.6	0.3	8	163	3	0.09
170525	12:03:08.16	44°46.95'	110°59.09'	8.2	0.2	11	187	3	0.12
170525	17:36:09.05	44°38.27'	110°16.06'	4.2	1.9W	16	102	6	0.16
170525	22:44:32.81	44°47.43'	111°02.36'	7.0	1.1W	14	171	4	0.13
170525	22:47:41.43	44°48.13'	111°02.06'	7.6	0.7	12	173	5	0.08
170526	07:56:21.50	44°47.38'	111°19.07'	10.0	0.3	10	153	10	0.11
170526	10:58:15.94	44°20.82'	110°19.23'	9.2	1.3	11	115	6	0.11
170526	15:57:22.09	44°44.24'	110°43.98'	-0.5	0.3	8	177	5	0.12
170527	05:37:15.36	44°38.22'	110°37.64'	2.4	1.0W	15	70	4	0.18
170527	05:37:33.73	44°38.83'	110°38.76'	1.4	1.1	9	133	5	0.09
170527	10:45:12.13	44°25.13'	110°35.86'	3.0	1.3	10	82	2	0.09
170527	22:55:47.00	44°47.77'	111°02.57'	7.6	0.6	10	154	5	0.09
170528	17:14:35.04	44°35.54'	110°20.78'	9.1	0.9	7	86	5	0.05
170528	21:23:15.67	44°47.35'	111°00.91'	5.1	0.7	9	206	3	0.11
170529	03:50:04.13	44°50.66'	111°06.43'	14.3	0.3	6	222	6	0.08
170529	18:33:40.01	44°41.50'	110°59.88'	8.2	1.2W	20	56	4	0.20
170531	13:55:29.95	44°23.37'	110°35.79'	3.6	1.4W	13	105	2	0.26
170531	14:46:09.81	44°44.59'	111°15.04'	10.4	0.9	18	139	4	0.14
170531	15:38:37.66	44°48.44'	111°00.25'	5.5	1.4W	12	170	5	0.13
170601	07:00:29.61	44°44.30'	111°08.96'	13.6	0.5	14	63	4	0.12
170602	02:27:24.89	44°46.28'	110°46.51'	5.0	1.4W	13	177	6	0.12
170602	02:27:36.24	44°46.28'	110°46.57'	4.8	2.0W	11	177	6	0.10
170602	02:27:45.15	44°46.22'	110°46.31'	2.2	1.6	8	177	7	0.17
170602	02:27:58.77	44°46.28'	110°46.55'	4.8	2.2W	21	177	6	0.14
170602	02:28:09.63	44°50.32'	110°43.52'	10.4	1.6	7	269	11	0.25
170602	02:29:29.91	44°45.93'	110°46.91'	4.5	1.8W	11	169	6	0.06
170602	02:29:32.68	44°47.26'	110°46.49'	4.3	2.6W	11	199	6	0.19
170602	02:30:29.52	44°46.09'	110°47.11'	2.8	1.7	6	170	6	0.05
170602	02:32:51.39	44°46.22'	110°47.45'	4.2	1.2W	10	191	5	0.13
170602	02:33:47.62	44°46.09'	110°47.25'	4.5	1.1W	13	170	5	0.11
170602	02:49:45.96	44°46.09'	111°10.26'	8.8	0.7	13	129	3	0.13
170602	02:58:42.87	44°46.73'	110°46.34'	5.2	1.2W	8	213	6	0.05
170602	03:07:55.55	44°46.21'	110°46.67'	3.8	1.4W	11	197	6	0.08
170602	03:08:10.99	44°46.49'	110°46.58'	5.0	1.8	11	205	6	0.07
170602	03:09:24.31	44°46.49'	110°46.57'	5.0	1.6W	17	181	6	0.08
170602	03:10:28.77	44°46.15'	110°47.00'	2.9	1.4	13	174	6	0.07
170602	03:15:07.70	44°46.15'	110°47.35'	3.7	1.4	7	190	5	0.08
170602	03:15:17.91	44°48.45'	110°50.95'	19.0	0.3	5	240	2	0.09
170602	03:15:40.29	44°47.23'	110°47.22'	6.2	0.8	6	220	5	0.03
170602	03:16:28.22	44°46.00'	110°47.02'	3.3	0.8	7	189	6	0.05
170602	03:24:12.52	44°46.67'	110°46.17'	5.0	1.0	8	213	7	0.04
170602	04:40:48.37	44°46.59'	110°47.08'	7.1	1.4W	14	181	5	0.14
170602	04:41:09.37	44°46.08'	110°46.64'	2.4	--	5	194	6	0.13
170602	06:25:25.22	44°46.51'	110°47.09'	5.1	0.6	11	202	5	0.04

Table 2. Earthquakes in the Yellowstone Region: April 1–June 30, 2017

DATE	ORIGIN TIME	LATITUDE	LONGITUDE	DEPTH	MAG	NO	GAP	DMN	RMS
170602	06:26:23.95	44°45.98'	110°46.97'	2.2	-0.5	7	189	6	0.11
170603	17:53:44.73	44°20.77'	110°40.96'	6.1	1.2	11	103	10	0.16
170604	00:24:54.01	44°38.71'	110°27.02'	2.8	1.1	8	186	9	0.07
170604	00:45:06.78	44°47.91'	110°36.26'	5.6	1.9W	21	108	11	0.17
170604	02:50:13.04	44°14.56'	110°46.10'	4.1	0.7	12	61	4	0.15
170606	04:20:45.65	44°26.88'	110°31.94'	2.4	0.8	7	126	5	0.08
170606	04:20:56.22	44°26.90'	110°32.31'	2.3	0.3	5	148	4	0.08
170606	04:21:16.72	44°27.14'	110°32.55'	3.1	1.6W	13	73	4	0.06
170606	04:21:44.80	44°27.61'	110°32.91'	4.2	0.4	10	174	4	0.18
170606	04:22:24.36	44°27.03'	110°32.63'	3.4	1.1W	14	90	4	0.08
170606	04:22:45.59	44°27.17'	110°32.68'	4.1	1.1W	10	132	4	0.04
170606	04:23:14.42	44°27.16'	110°32.59'	2.9	0.1	10	132	4	0.16
170606	19:00:06.22	44°46.40'	110°47.48'	6.5	1.0	13	195	5	0.10
170607	20:38:44.93	44°19.88'	110°39.80'	2.3*	1.5	12	81	12	0.25
170607	20:39:55.98	44°19.46'	110°39.74'	7.1	1.7W	14	66	10	0.13
170608	00:29:01.56	44°34.88'	110°43.61'	7.2	0.8W	10	123	7	0.13
170611	00:27:55.09	44°15.12'	110°48.95'	5.3	1.3	12	161	2	0.20
170611	00:41:28.55	44°15.25'	110°49.96'	4.8	1.2	11	166	3	0.06
170611	02:01:44.76	44°15.18'	110°48.84'	5.1	1.5	12	161	2	0.16
170611	11:37:11.67	44°47.04'	110°54.85'	9.1	-0.5	9	154	5	0.09
170612	16:46:37.13	44°47.20'	111°01.82'	10.8	2.9W	26	47	4	0.16
170612	16:46:47.05	44°47.09'	111°01.44'	11.1	3.1W	10	167	7	0.07
170612	16:48:09.86	44°46.81'	111°01.54'	9.0	2.7W	23	160	3	0.16
170612	16:49:49.21	44°46.91'	111°01.37'	8.8	2.1W	16	162	3	0.16
170612	16:53:41.09	44°47.09'	110°58.73'	1.4	0.2	6	169	4	0.23
170612	16:53:57.61	44°46.60'	111°01.06'	8.3	0.8	14	156	2	0.10
170612	16:54:16.45	44°45.90'	111°01.57'	1.5	0.1	6	247	2	0.18
170612	17:03:23.37	44°46.67'	111°00.96'	7.2	0.1	7	142	2	0.16
170612	17:03:47.64	44°46.62'	111°01.06'	7.8	1.4W	8	157	2	0.03
170612	17:03:53.02	44°44.64'	111°03.15'	4.3	0.2	6	134	4	0.05
170612	17:05:42.14	44°43.72'	111°01.09'	1.2	0.4	6	95	4	0.02
170612	17:06:31.49	44°45.89'	111°00.39'	6.6	0.4	7	144	1	0.09
170612	17:09:01.68	44°45.35'	110°58.65'	3.5	-0.2	6	150	2	0.07
170612	17:09:20.78	44°47.02'	111°01.42'	8.8	1.6W	17	165	3	0.15
170612	17:09:34.00	44°46.30'	111°01.14'	7.6	0.7	13	150	2	0.14
170612	17:19:27.29	44°46.91'	111°01.23'	8.3	1.0	14	162	3	0.12
170612	17:23:45.30	44°46.58'	111°01.63'	7.6	-0.3	7	147	3	0.18
170612	17:23:56.96	44°45.41'	110°58.34'	2.1	-0.1	5	154	3	0.03
170612	17:39:09.87	44°46.11'	111°00.60'	7.4	0.4	11	148	1	0.11
170612	17:40:34.89	44°46.76'	111°01.76'	8.1	0.5	14	141	3	0.09
170612	17:40:42.48	44°46.50'	111°00.96'	7.7	0.5	8	154	2	0.10
170612	17:40:47.60	44°45.98'	111°01.19'	8.0	0.4	7	143	1	0.07
170612	17:44:20.91	44°47.00'	111°01.58'	9.4	2.0W	19	164	3	0.15
170612	17:52:09.65	44°46.15'	111°00.79'	6.5	0.3	9	147	1	0.08
170612	17:55:10.18	44°47.17'	111°01.41'	8.8	1.9W	16	168	3	0.12

Table 2. Earthquakes in the Yellowstone Region: April 1–June 30, 2017

DATE	ORIGIN TIME	LATITUDE	LONGITUDE	DEPTH	MAG	NO	GAP	DMN	RMS
170612	17:55:53.92	44°47.44'	111°01.56'	8.9	1.7W	15	172	4	0.12
170612	18:12:01.95	44°46.74'	111°01.38'	7.9	1.0	12	158	3	0.09
170612	18:23:41.38	44°47.11'	111°01.55'	9.3	2.2W	17	167	3	0.15
170612	18:24:00.81	44°46.45'	111°01.47'	8.1	2.9W	23	152	2	0.15
170612	18:27:07.59	44°46.81'	111°01.41'	8.1	2.0W	17	160	3	0.14
170612	18:27:21.83	44°46.66'	111°02.55'	8.9	0.9	6	170	4	0.23
170612	18:27:54.67	44°46.57'	111°01.22'	8.5	1.1	12	155	2	0.11
170612	18:28:11.31	44°46.48'	111°00.77'	7.0	1.3W	14	155	2	0.11
170612	18:30:34.24	44°46.23'	111°00.23'	5.8	0.8	10	178	1	0.09
170612	18:39:56.85	44°46.77'	111°01.08'	3.6	0.6	14	143	2	0.17
170612	18:43:02.81	44°45.63'	111°00.44'	6.2	0.6	10	182	0	0.08
170612	18:55:41.05	44°46.87'	111°01.43'	8.2	1.6W	16	161	3	0.14
170612	19:27:44.93	44°47.15'	111°01.54'	9.4	1.5W	16	121	3	0.14
170612	19:28:39.65	44°47.11'	111°01.53'	8.1	1.5W	14	115	3	0.10
170612	19:46:44.24	44°46.67'	111°01.13'	7.7	1.2	14	111	2	0.11
170612	19:47:10.02	44°46.51'	111°03.70'	7.9	0.0	7	255	5	0.24
170612	20:38:57.51	44°47.71'	111°01.17'	9.6	2.1W	18	70	4	0.15
170612	21:14:07.00	44°44.99'	110°57.65'	1.4	1.0	9	136	4	0.04
170612	21:27:40.38	44°46.90'	111°01.24'	8.1	1.7W	15	166	3	0.15
170612	21:59:46.81	44°46.44'	111°01.00'	7.2	1.0	13	153	2	0.12
170612	22:34:08.33	44°46.93'	111°01.31'	8.3	2.1W	17	163	3	0.16
170612	22:54:55.65	44°46.95'	111°02.32'	10.6	3.2W	23	113	15	0.16
170612	23:12:35.11	44°46.55'	111°00.97'	7.9	0.7	10	251	2	0.13
170612	23:18:35.61	44°46.71'	111°01.52'	7.0	0.2	8	142	3	0.09
170613	00:06:16.57	44°46.68'	111°01.27'	8.9	2.1W	16	158	2	0.11
170613	00:27:14.29	44°46.47'	111°01.80'	8.0	0.3	7	137	3	0.10
170613	00:30:37.08	44°46.69'	111°01.38'	8.2	2.0W	19	158	2	0.17
170613	02:43:59.07	44°46.81'	111°01.16'	7.7	0.6	9	144	3	0.14
170613	03:02:11.62	44°46.71'	111°01.43'	8.3	1.7W	19	158	3	0.17
170613	03:44:52.63	44°47.01'	111°01.24'	8.8	1.5W	19	146	3	0.17
170613	03:56:04.45	44°46.40'	111°01.02'	7.8	1.2W	15	152	2	0.11
170613	04:37:54.66	44°46.69'	111°01.58'	7.4	0.6	18	141	3	0.16
170613	05:03:59.15	44°46.99'	111°01.23'	7.6	1.4W	17	146	3	0.16
170613	06:47:40.14	44°47.10'	111°01.26'	9.0	0.9	15	148	3	0.15
170613	07:26:50.30	44°47.15'	111°02.04'	10.2	2.7W	26	78	4	0.13
170613	07:32:17.80	44°46.24'	111°00.99'	6.5	0.3	12	179	2	0.16
170613	07:32:25.29	44°45.89'	111°01.85'	6.3	1.2	10	138	2	0.12
170613	08:37:27.36	44°46.87'	111°01.32'	8.4	1.2W	18	113	3	0.18
170613	09:30:14.89	44°46.29'	111°00.94'	6.6	0.6	13	150	2	0.13
170613	09:30:27.11	44°46.91'	111°01.28'	8.0	1.4W	17	144	3	0.16
170613	09:48:19.14	44°46.90'	111°01.40'	9.1	1.8W	18	144	3	0.15
170613	09:58:50.57	44°45.82'	110°59.88'	7.0	0.5	11	143	1	0.09
170613	10:16:37.65	44°46.93'	111°01.58'	8.3	2.1W	20	145	3	0.15
170613	10:33:07.97	44°46.86'	111°01.21'	8.0	1.5W	14	162	3	0.13
170613	11:08:42.81	44°46.64'	111°01.06'	7.2	1.5W	15	157	2	0.13

Table 2. Earthquakes in the Yellowstone Region: April 1–June 30, 2017

DATE	ORIGIN TIME	LATITUDE	LONGITUDE	DEPTH	MAG	NO	GAP	DMN	RMS
170613	11:15:58.05	44°46.45'	111°01.13'	6.5	0.7	13	183	2	0.14
170613	11:28:39.51	44°47.46'	111°01.99'	10.5	2.7W	27	124	4	0.15
170613	12:15:47.22	44°47.07'	111°01.27'	7.6	1.5W	13	167	3	0.12
170613	12:52:14.94	44°43.84'	110°48.01'	2.5	1.0W	9	130	8	0.11
170613	12:53:33.46	44°44.10'	110°47.80'	8.1	1.2W	10	138	7	0.16
170613	12:53:39.85	44°43.72'	110°48.20'	7.0	0.8	9	127	8	0.19
170613	12:57:55.95	44°43.92'	110°47.73'	8.2	1.3W	11	135	8	0.16
170613	13:12:10.68	44°46.11'	111°01.21'	6.6	0.9	15	145	2	0.17
170613	13:14:59.05	44°44.20'	110°47.69'	7.8	1.7W	11	141	7	0.13
170613	13:16:46.22	44°44.08'	110°48.08'	8.4	1.2W	11	135	7	0.19
170613	13:18:13.65	44°43.79'	110°47.79'	7.2	1.2W	13	132	8	0.16
170613	13:23:59.00	44°43.91'	110°47.81'	7.1	0.4	8	134	8	0.12
170613	13:24:35.71	44°44.10'	110°48.11'	3.9	0.1	7	135	7	0.10
170613	13:53:25.05	44°43.49'	110°48.16'	4.0	1.5W	15	124	8	0.13
170613	13:56:55.09	44°45.10'	111°00.91'	4.8	1.6W	14	95	1	0.20
170613	14:05:19.07	44°47.25'	111°01.20'	8.4	2.0W	17	150	3	0.12
170613	14:07:48.08	44°46.54'	111°01.09'	6.8	1.2	15	184	2	0.19
170613	14:08:35.58	44°43.77'	110°47.94'	2.2	0.5	8	130	8	0.11
170613	14:11:35.83	44°46.73'	111°01.28'	8.3	2.1W	16	158	2	0.15
170613	14:11:44.63	44°45.89'	111°01.20'	8.6	1.6	10	141	1	0.11
170613	14:49:26.42	44°44.02'	110°47.84'	8.3	0.9W	10	136	7	0.14
170613	15:03:26.07	44°46.55'	111°00.78'	7.2	0.3	13	141	2	0.14
170613	15:03:38.26	44°44.01'	110°47.86'	8.0	1.2W	8	136	7	0.12
170613	15:29:39.64	44°46.71'	111°01.34'	7.8	2.1W	17	158	2	0.15
170613	15:33:57.94	44°46.69'	111°01.26'	7.2	1.5W	14	158	2	0.16
170613	15:34:37.39	44°46.76'	111°01.32'	7.0	1.4W	18	142	3	0.17
170613	19:37:57.68	44°47.02'	111°01.49'	7.6	0.9	14	146	3	0.07
170613	19:42:54.58	44°47.04'	111°01.52'	8.4	1.0	12	146	3	0.09
170613	21:11:16.03	44°47.27'	110°58.86'	4.7	0.5	15	155	4	0.14
170613	21:41:06.60	44°46.54'	111°00.81'	6.3	--	10	155	2	0.10
170614	00:11:40.07	44°46.84'	110°47.45'	4.8	1.7W	22	186	5	0.15
170614	03:00:29.76	44°47.15'	111°01.65'	9.6	2.9W	20	167	3	0.13
170614	03:01:46.32	44°46.40'	111°00.88'	6.8	0.5	9	152	2	0.10
170614	03:10:49.37	44°47.35'	110°47.25'	4.7	1.3W	16	199	5	0.11
170614	03:58:16.68	44°46.50'	111°01.27'	8.1	0.9	18	153	2	0.13
170614	04:05:50.47	44°46.80'	111°00.78'	7.2	0.8	14	161	2	0.09
170614	04:08:07.56	44°46.50'	111°01.02'	7.8	0.5	12	154	2	0.10
170614	04:22:59.81	44°35.60'	110°22.51'	4.0	1.5	11	106	4	0.10
170614	04:33:47.05	44°35.74'	110°22.37'	2.2	1.3	14	106	4	0.22
170614	04:34:02.66	44°36.06'	110°22.87'	3.8	1.9W	12	108	4	0.10
170614	04:46:02.79	44°35.64'	110°22.81'	4.7	1.4	15	104	4	0.11
170614	05:34:54.79	44°47.23'	111°01.56'	9.5	1.7W	18	170	3	0.14
170614	05:55:50.71	44°46.13'	111°00.14'	6.0	0.4	11	148	1	0.10
170614	06:15:07.06	44°46.71'	111°01.36'	9.2	2.6W	23	158	3	0.16
170614	06:33:24.66	44°45.27'	110°59.09'	3.2	0.4	8	142	2	0.03

Table 2. Earthquakes in the Yellowstone Region: April 1–June 30, 2017

DATE	ORIGIN TIME	LATITUDE	LONGITUDE	DEPTH	MAG	NO	GAP	DMN	RMS
170614	06:33:29.69	44°46.38'	111°01.09'	7.0	1.0	14	181	2	0.12
170614	07:23:22.32	44°44.21'	110°50.63'	4.1	0.8	8	105	6	0.10
170614	08:05:32.24	44°44.19'	110°50.93'	3.0	0.4	7	100	6	0.04
170614	08:12:31.72	44°46.69'	111°01.64'	8.6	1.5	17	157	3	0.14
170614	08:16:18.33	44°44.59'	110°50.82'	5.7	1.2W	13	105	5	0.13
170614	08:53:51.81	44°44.29'	110°50.91'	4.5	0.5	7	101	6	0.07
170614	09:22:09.27	44°46.42'	111°01.23'	8.0	0.7	16	152	2	0.12
170614	11:10:39.28	44°44.81'	111°02.87'	5.0	0.5	9	124	4	0.05
170614	11:35:04.01	44°44.58'	110°50.88'	6.5	0.6	9	104	5	0.11
170614	12:28:32.40	44°44.54'	110°51.13'	7.2	0.4	7	101	5	0.07
170614	12:36:31.94	44°44.40'	110°50.77'	7.7	1.1	11	104	5	0.15
170614	12:36:58.01	44°44.44'	110°50.69'	6.4	1.1	16	105	5	0.12
170614	12:37:54.82	44°43.93'	110°50.45'	6.6	1.4	14	104	6	0.11
170614	12:39:33.93	44°44.63'	110°50.80'	7.4	1.7W	18	106	5	0.15
170614	12:41:49.42	44°44.30'	110°50.59'	5.5	1.7W	18	105	6	0.15
170614	12:44:37.60	44°44.48'	110°50.56'	6.5	1.6W	13	108	5	0.14
170614	12:45:27.02	44°44.61'	110°50.53'	7.4	1.7W	17	110	5	0.15
170614	12:46:12.10	44°44.59'	110°50.64'	7.8	1.7W	14	108	5	0.11
170614	12:47:26.78	44°45.10'	110°50.36'	8.9	2.1W	21	64	4	0.15
170614	12:54:41.36	44°44.77'	110°51.11'	7.8	1.1W	12	102	5	0.15
170614	12:55:12.64	44°44.76'	110°51.02'	6.6	0.9W	10	103	5	0.18
170614	12:58:16.12	44°44.64'	110°50.85'	6.9	1.2W	13	105	5	0.11
170614	13:00:35.84	44°44.38'	110°50.56'	6.6	1.5W	14	107	5	0.15
170614	13:15:14.67	44°44.74'	110°50.71'	7.2	1.7W	14	109	5	0.10
170614	13:16:33.89	44°44.82'	110°50.45'	7.5	1.1W	11	114	5	0.09
170614	13:17:37.60	44°44.65'	110°50.55'	6.2	1.5W	12	110	5	0.12
170614	13:18:07.43	44°44.74'	110°50.70'	6.4	1.6W	14	109	5	0.13
170614	13:18:26.01	44°44.66'	110°50.86'	5.7	1.8W	11	105	5	0.08
170614	13:19:40.27	44°44.21'	110°50.63'	6.6	1.4W	14	105	6	0.15
170614	13:20:55.85	44°44.61'	110°50.61'	7.1	0.9W	11	109	5	0.11
170614	13:28:10.46	44°44.72'	110°51.03'	7.3	0.4	10	103	5	0.12
170614	13:28:23.31	44°44.63'	110°50.55'	7.9	0.5	11	110	5	0.13
170614	13:29:51.47	44°44.58'	110°50.50'	5.7	1.1W	13	110	5	0.13
170614	13:29:58.57	44°43.60'	110°51.29'	2.8	0.7	9	128	7	0.14
170614	13:33:22.68	44°43.94'	110°50.26'	3.7	1.1	8	107	6	0.18
170614	13:33:39.26	44°44.18'	110°50.66'	3.6	0.0	7	103	6	0.12
170614	13:39:20.61	44°44.89'	110°50.77'	7.3	2.3W	20	95	4	0.14
170614	13:54:05.58	44°45.24'	110°51.00'	3.6	1.1W	9	129	4	0.20
170614	13:59:13.37	44°44.35'	110°50.92'	4.9	1.1W	9	101	5	0.07
170614	14:01:31.40	44°44.08'	110°50.65'	6.1	1.0	10	103	6	0.15
170614	14:10:15.51	44°44.15'	110°50.44'	2.1	0.9W	10	106	6	0.11
170614	14:31:44.25	44°44.52'	110°50.71'	7.0	1.0W	8	106	5	0.09
170614	15:56:11.98	44°44.41'	110°51.02'	6.9	1.1	10	101	5	0.14
170614	17:02:19.78	44°46.39'	111°00.95'	8.1	1.0	10	152	2	0.07
170614	17:02:46.58	44°46.21'	111°00.52'	7.3	0.4	10	149	1	0.11

Table 2. Earthquakes in the Yellowstone Region: April 1–June 30, 2017

DATE	ORIGIN TIME	LATITUDE	LONGITUDE	DEPTH	MAG	NO	GAP	DMN	RMS
170614	17:15:57.18	44°47.33'	111°01.02'	8.4	1.6W	15	196	3	0.15
170614	17:16:11.45	44°45.51'	111°02.00'	6.0	0.5	9	170	2	0.11
170614	17:25:57.96	44°46.36'	111°00.16'	7.4	0.9	12	191	2	0.09
170614	17:26:22.05	44°44.72'	110°50.52'	6.2	0.0	7	123	5	0.05
170614	17:26:44.25	44°45.33'	110°58.23'	2.5	0.1	7	149	3	0.06
170614	18:15:50.71	44°47.24'	111°01.23'	8.8	2.3W	16	150	3	0.13
170614	18:18:54.82	44°46.94'	111°00.90'	8.4	1.6W	13	147	3	0.12
170614	19:51:22.88	44°46.82'	111°00.98'	8.1	0.6	17	145	2	0.19
170615	00:12:44.77	44°44.69'	110°50.88'	6.5	1.0W	10	105	5	0.14
170615	05:00:28.68	44°39.17'	109°56.72'	15.7	1.6	12	180	9	0.23
170615	05:05:33.60	44°46.83'	111°00.95'	9.6	1.6W	22	69	2	0.17
170615	07:33:59.99	44°47.00'	111°01.34'	8.4	0.6	11	146	3	0.11
170615	08:36:10.08	44°47.05'	111°01.50'	8.1	0.6	14	147	3	0.11
170615	08:55:51.52	44°46.01'	111°00.52'	4.8	0.5	9	146	1	0.08
170615	10:35:02.26	44°46.74'	111°01.43'	7.1	0.5	10	199	3	0.08
170615	12:35:30.36	44°45.73'	110°58.81'	3.6	-0.2	6	172	2	0.04
170615	12:35:43.27	44°46.84'	111°01.12'	5.7	0.3	10	200	3	0.12
170615	12:56:39.24	44°47.18'	111°01.19'	7.6	0.6	11	148	3	0.06
170615	13:17:05.40	44°47.01'	111°01.40'	7.9	0.4	10	146	3	0.04
170615	13:26:10.50	44°47.08'	111°01.39'	8.4	0.5	7	147	3	0.07
170615	14:06:02.71	44°47.33'	111°01.31'	7.2	0.6	12	151	4	0.13
170615	14:09:31.10	44°46.84'	111°01.68'	7.4	0.3	9	143	3	0.06
170615	14:34:10.42	44°47.28'	111°01.26'	7.0	0.7	15	150	3	0.12
170615	14:48:08.56	44°47.11'	111°01.25'	9.1	1.0	13	148	3	0.10
170615	14:48:16.19	44°46.23'	111°01.19'	7.2	0.8	8	136	2	0.03
170616	00:43:39.46	44°47.00'	111°01.71'	8.5	1.8W	18	145	3	0.11
170616	00:48:46.94	44°46.88'	111°01.99'	9.3	4.4W	32	117	3	0.14
170616	00:53:09.04	44°46.76'	111°01.80'	8.4	1.5	16	141	3	0.11
170616	00:53:38.25	44°46.84'	111°02.26'	7.7	0.6	17	159	3	0.15
170616	00:55:18.41	44°47.08'	111°02.12'	9.3	2.7W	23	115	4	0.15
170616	00:57:00.96	44°46.76'	111°02.30'	8.7	2.1W	22	141	3	0.16
170616	00:57:43.55	44°47.18'	111°01.35'	7.6	0.5	15	149	3	0.10
170616	00:58:09.46	44°47.31'	111°01.86'	10.2	1.4W	18	102	4	0.14
170616	00:58:22.94	44°25.10'	110°33.68'	-1.0	0.8	6	201	3	0.20
170616	00:58:32.63	44°47.20'	111°00.53'	8.0	0.9	12	151	3	0.17
170616	00:59:31.61	44°47.10'	111°02.27'	9.1	2.2W	19	145	4	0.13
170616	01:00:43.57	44°47.22'	111°01.35'	7.7	1.6W	20	149	3	0.14
170616	01:01:04.83	44°47.05'	111°01.34'	7.4	1.5	18	146	3	0.13
170616	01:02:21.64	44°46.47'	111°02.03'	7.7	1.7W	19	137	3	0.13
170616	01:02:42.08	44°46.30'	111°01.27'	7.6	1.2W	17	137	2	0.14
170616	01:02:52.82	44°46.82'	111°01.99'	9.3	2.7W	19	142	3	0.12
170616	01:03:15.14	44°46.55'	111°02.32'	9.5	3.1W	20	137	6	0.15
170616	01:03:48.75	44°46.96'	111°01.29'	7.6	1.5	11	164	3	0.12
170616	01:04:28.00	44°47.10'	111°01.22'	8.0	2.0W	18	148	3	0.13
170616	01:04:58.79	44°47.24'	111°01.61'	8.5	0.4	10	149	4	0.12

Table 2. Earthquakes in the Yellowstone Region: April 1–June 30, 2017

DATE	ORIGIN TIME	LATITUDE	LONGITUDE	DEPTH	MAG	NO	GAP	DMN	RMS
170616	01:06:48.53	44°47.24'	111°01.32'	7.5	1.5W	14	170	3	0.07
170616	01:09:41.27	44°46.01'	111°02.47'	6.9	0.3	12	137	3	0.12
170616	01:10:09.85	44°47.11'	111°01.33'	8.0	1.7W	17	167	3	0.11
170616	01:10:49.04	44°46.87'	111°00.51'	4.6*	-0.1	9	188	13	0.13
170616	01:11:24.69	44°46.55'	111°00.57'	8.1	1.3W	17	183	2	0.16
170616	01:11:41.81	44°46.20'	111°00.90'	7.9	1.2W	17	149	1	0.14
170616	01:12:35.12	44°47.39'	111°01.48'	8.3	2.0W	20	171	4	0.13
170616	01:13:49.81	44°46.92'	111°00.97'	7.5	0.3	19	113	3	0.12
170616	01:16:04.56	44°47.39'	111°01.11'	10.4	1.5W	16	117	7	0.17
170616	01:16:14.24	44°47.22'	111°01.40'	8.2	2.0W	17	116	7	0.13
170616	01:20:16.83	44°47.03'	111°02.12'	7.6	2.3W	17	163	4	0.13
170616	01:21:01.31	44°46.89'	111°01.00'	9.0	1.9W	16	163	3	0.13
170616	01:21:34.79	44°46.11'	111°01.53'	7.2	0.4	14	144	2	0.15
170616	01:23:26.62	44°47.34'	111°01.27'	7.2	1.3W	15	196	14	0.13
170616	01:24:34.86	44°45.15'	110°58.62'	7.9	0.2	10	139	2	0.16
170616	01:24:47.65	44°46.46'	111°01.60'	7.2	1.2	17	151	2	0.15
170616	01:26:24.35	44°46.85'	111°01.96'	8.7	0.9	15	113	3	0.14
170616	01:29:14.49	44°46.41'	111°01.85'	6.6	1.0	11	150	3	0.06
170616	01:29:34.95	44°45.58'	110°59.33'	4.6	0.2	8	164	1	0.09
170616	01:30:16.48	44°46.25'	111°01.29'	7.5	0.7	15	148	2	0.07
170616	01:30:33.86	44°45.95'	111°00.31'	6.4	0.3	16	145	1	0.09
170616	01:32:20.88	44°46.46'	111°00.77'	5.8	0.6	10	183	2	0.07
170616	01:32:44.87	44°46.24'	111°01.01'	6.1	0.6	13	179	2	0.10
170616	01:35:42.14	44°45.55'	111°01.03'	6.0	1.0	7	135	1	0.09
170616	01:35:57.23	44°45.88'	111°02.24'	5.9	0.2	9	136	3	0.15
170616	01:37:35.58	44°46.00'	111°01.83'	6.2	0.9	13	141	2	0.10
170616	01:38:09.49	44°46.37'	111°01.69'	5.3	0.7	8	149	2	0.06
170616	01:39:07.97	44°46.34'	111°01.64'	7.5	0.4	13	149	2	0.11
170616	01:39:53.40	44°46.64'	111°01.02'	8.3	0.7	14	157	2	0.11
170616	01:41:46.23	44°46.80'	111°01.52'	7.5	1.5W	15	160	3	0.11
170616	01:42:07.71	44°45.72'	110°58.99'	4.9	0.5	12	173	2	0.12
170616	01:44:25.99	44°46.19'	111°00.51'	6.5	0.9	15	149	1	0.11
170616	01:46:27.45	44°47.23'	111°02.19'	9.8	2.9W	21	116	4	0.13
170616	01:47:19.24	44°46.51'	111°01.52'	7.1	1.2	14	153	2	0.12
170616	01:54:43.46	44°46.14'	111°01.20'	6.7	0.4	15	146	2	0.12
170616	01:54:54.14	44°46.34'	111°01.34'	4.6	0.1	10	150	2	0.11
170616	01:56:55.82	44°47.01'	111°01.48'	7.7	1.2	15	164	3	0.13
170616	02:00:51.66	44°46.74'	111°01.10'	7.0	0.8	16	159	2	0.14
170616	02:05:39.11	44°46.53'	111°01.37'	6.3	0.4	10	153	2	0.11
170616	02:06:41.14	44°46.37'	111°01.88'	7.9	1.2W	14	149	2	0.12
170616	02:06:58.81	44°46.00'	111°01.89'	6.4	0.2	11	141	2	0.11
170616	02:09:22.47	44°46.47'	111°01.66'	6.6	0.8	18	151	2	0.13
170616	02:12:03.26	44°46.08'	111°02.16'	6.8	0.4	10	141	3	0.13
170616	02:15:28.21	44°46.68'	111°00.59'	6.2	0.4	14	159	2	0.13
170616	02:21:31.10	44°46.49'	111°01.46'	6.6	0.2	12	152	2	0.08

Table 2. Earthquakes in the Yellowstone Region: April 1–June 30, 2017

DATE	ORIGIN TIME	LATITUDE	LONGITUDE	DEPTH	MAG	NO	GAP	DMN	RMS
170616	02:22:00.68	44°46.51'	111°01.32'	6.3	0.3	7	244	2	0.06
170616	02:28:59.95	44°46.36'	111°01.68'	7.7	1.2	16	149	2	0.14
170616	02:30:46.02	44°46.18'	111°01.26'	7.7	0.2	11	147	2	0.12
170616	02:31:01.72	44°46.53'	111°01.97'	7.9	1.4W	15	152	3	0.15
170616	02:32:53.14	44°46.62'	111°01.67'	6.5	0.4	13	155	3	0.09
170616	02:33:22.31	44°47.31'	111°01.36'	8.1	1.7W	19	171	3	0.13
170616	02:39:00.28	44°45.79'	111°00.88'	4.8	-0.1	8	235	1	0.06
170616	02:39:28.46	44°46.34'	111°01.58'	7.8	0.6	16	149	2	0.13
170616	02:39:41.45	44°46.73'	111°01.40'	6.2	-0.1	8	199	3	0.12
170616	02:43:23.95	44°45.22'	111°02.15'	4.5	-0.1	8	181	2	0.10
170616	02:43:55.06	44°46.89'	111°01.77'	7.3	0.8	11	201	3	0.08
170616	02:47:09.28	44°46.48'	111°01.10'	8.0	1.4W	18	154	2	0.13
170616	02:49:57.99	44°45.59'	111°00.49'	5.0	0.7	13	137	0	0.13
170616	02:50:18.49	44°46.35'	111°01.04'	5.4	0.3	9	263	2	0.17
170616	02:50:32.88	44°45.64'	110°59.04'	5.1	-0.1	6	167	2	0.18
170616	02:52:09.75	44°44.81'	110°59.30'	8.0	1.6W	18	112	2	0.16
170616	02:55:28.31	44°44.97'	111°00.04'	3.9	0.0	7	177	1	0.03
170616	02:57:43.18	44°47.07'	111°01.37'	7.3	0.8	14	166	3	0.12
170616	03:03:21.59	44°46.35'	111°00.53'	7.4	0.6	7	239	1	0.06
170616	03:04:03.10	44°45.06'	111°00.69'	4.7	0.0	7	180	1	0.03
170616	03:05:50.51	44°46.55'	111°01.49'	6.0	0.5	14	185	2	0.15
170616	03:06:26.41	44°46.85'	111°00.92'	7.4	0.6	14	162	2	0.12
170616	03:10:02.19	44°45.99'	111°00.56'	7.8	0.8	18	145	1	0.14
170616	03:22:09.91	44°46.02'	111°01.16'	6.3	0.9	18	143	1	0.11
170616	03:24:34.21	44°47.68'	111°02.10'	10.0	2.1W	21	70	5	0.12
170616	03:28:21.80	44°46.41'	111°00.63'	8.1	0.9	15	153	2	0.11
170616	03:36:33.19	44°46.42'	111°01.18'	7.7	1.8W	19	151	2	0.16
170616	03:41:32.71	44°46.68'	111°01.03'	8.0	0.5	14	158	2	0.13
170616	03:42:41.47	44°46.47'	111°01.15'	7.9	1.6W	19	153	2	0.16
170616	03:43:34.68	44°46.36'	111°00.61'	7.5	0.4	15	153	2	0.15
170616	03:48:08.21	44°46.36'	111°01.34'	8.1	1.7W	20	150	2	0.16
170616	03:57:38.51	44°46.47'	111°01.78'	8.1	1.4W	17	151	3	0.14
170616	04:06:10.25	44°45.96'	111°01.08'	5.6	0.1	11	175	1	0.14
170616	04:06:51.75	44°46.91'	111°01.77'	8.5	1.6W	17	113	3	0.16
170616	04:23:47.79	44°46.43'	111°01.95'	7.0	0.5	10	150	3	0.12
170616	04:24:21.31	44°46.85'	111°01.38'	5.8	0.6	8	248	3	0.05
170616	04:33:17.90	44°28.88'	110°33.76'	3.8	1.3W	12	116	5	0.15
170616	04:33:38.50	44°46.81'	111°01.25'	7.3	1.0	9	189	3	0.11
170616	04:38:23.02	44°45.28'	111°01.80'	4.7	0.6	10	126	2	0.10
170616	04:39:31.38	44°46.75'	111°01.04'	6.8	1.2W	17	159	2	0.14
170616	04:50:34.60	44°46.70'	111°00.96'	8.0	1.7W	20	159	2	0.17
170616	04:57:33.92	44°45.52'	111°00.45'	4.6	1.0	11	113	0	0.09
170616	04:57:53.68	44°45.47'	111°00.14'	4.3	0.4	11	136	0	0.09
170616	05:07:03.28	44°47.31'	111°02.05'	9.4	2.0W	21	70	4	0.13
170616	05:09:21.55	44°45.98'	111°01.26'	5.9	1.8W	16	142	1	0.13

Table 2. Earthquakes in the Yellowstone Region: April 1–June 30, 2017

DATE	ORIGIN TIME	LATITUDE	LONGITUDE	DEPTH	MAG	NO	GAP	DMN	RMS
170616	05:14:29.72	44°46.07'	111°00.67'	8.9	1.2	17	146	1	0.17
170616	05:15:42.37	44°46.65'	111°00.73'	8.4	0.7	14	158	2	0.09
170616	05:17:23.27	44°45.90'	111°00.57'	6.9	0.9	10	235	1	0.08
170616	05:21:57.46	44°46.07'	111°01.96'	6.9	0.4	14	141	2	0.11
170616	05:22:14.80	44°47.11'	111°00.81'	7.5	0.8	16	192	3	0.16
170616	05:25:19.51	44°46.87'	111°00.91'	9.4	1.6W	16	163	3	0.12
170616	05:25:44.39	44°46.37'	111°01.29'	6.9	0.1	11	194	2	0.15
170616	05:36:11.84	44°46.00'	111°01.77'	6.9	0.3	15	141	2	0.17
170616	05:53:34.20	44°46.63'	111°00.96'	8.4	0.2	12	185	2	0.07
170616	05:58:11.24	44°47.14'	111°01.65'	6.0	1.7W	16	167	3	0.11
170616	06:04:57.42	44°46.19'	111°01.39'	7.4	0.3	11	147	2	0.10
170616	06:15:41.80	44°45.57'	110°59.42'	4.9	0.8	7	164	1	0.06
170616	06:26:11.93	44°46.47'	111°01.88'	7.8	-0.1	7	196	3	0.09
170616	06:33:45.38	44°47.46'	111°01.94'	7.9	0.6	14	199	4	0.08
170616	06:38:13.31	44°46.09'	111°00.63'	5.9	0.8	14	146	1	0.09
170616	06:50:27.86	44°45.83'	111°01.29'	7.1	0.3	11	139	1	0.12
170616	06:59:25.74	44°46.62'	111°01.35'	7.7	0.0	6	252	2	0.12
170616	07:00:00.96	44°45.99'	111°01.50'	6.8	0.4	12	142	2	0.14
170616	07:00:33.30	44°45.46'	111°02.53'	5.7	0.6	6	185	3	0.04
170616	07:01:02.00	44°46.42'	111°01.90'	8.4	1.2	21	150	3	0.14
170616	07:03:40.17	44°47.17'	111°01.17'	8.0	1.3W	16	168	3	0.15
170616	07:06:59.92	44°46.50'	111°01.67'	8.3	0.6	17	152	2	0.14
170616	07:19:13.48	44°46.39'	111°01.90'	6.9	0.8	7	149	3	0.05
170616	07:25:25.82	44°47.60'	111°01.37'	10.4	2.2W	20	70	4	0.15
170616	07:33:48.12	44°46.69'	111°01.79'	8.4	0.3	15	141	3	0.13
170616	07:44:53.44	44°46.99'	111°01.21'	7.2	0.6	17	146	3	0.13
170616	07:49:51.13	44°46.83'	111°01.47'	7.0	1.3	16	160	3	0.15
170616	07:50:25.43	44°47.06'	111°02.38'	8.9	2.0W	19	164	4	0.14
170616	07:51:06.76	44°47.00'	111°01.14'	7.3	1.5W	14	165	3	0.12
170616	08:02:02.07	44°47.62'	111°02.63'	9.7	2.8W	28	49	5	0.14
170616	08:09:24.69	44°44.82'	111°00.02'	8.1	0.7	15	86	1	0.16
170616	08:11:34.71	44°47.16'	111°01.89'	6.0	0.1	14	146	4	0.10
170616	08:11:46.52	44°45.89'	111°01.65'	5.8	0.0	10	131	2	0.12
170616	08:14:13.87	44°44.33'	111°01.40'	11.1	0.9	18	75	3	0.15
170616	08:14:45.09	44°45.57'	111°01.12'	5.5	0.3	12	127	1	0.20
170616	08:17:27.98	44°46.70'	111°02.30'	7.7	1.3W	18	139	3	0.14
170616	08:21:36.97	44°46.68'	111°02.20'	8.1	0.8	11	139	3	0.07
170616	08:22:06.64	44°46.60'	111°01.65'	7.7	0.1	10	140	3	0.09
170616	08:28:10.18	44°45.69'	111°01.64'	5.8	0.5	13	135	2	0.11
170616	08:45:43.88	44°47.46'	111°02.18'	9.6	2.1W	22	70	4	0.13
170616	08:51:52.48	44°46.48'	111°02.18'	7.7	0.5	15	137	3	0.12
170616	08:52:48.28	44°45.82'	111°00.66'	5.9	0.5	16	141	1	0.13
170616	09:04:08.98	44°46.81'	111°02.02'	7.8	0.4	12	142	3	0.10
170616	09:15:34.08	44°47.04'	111°01.19'	7.6	1.5W	17	147	3	0.14
170616	09:28:37.95	44°46.16'	111°01.25'	7.4	0.7	14	147	2	0.09

Table 2. Earthquakes in the Yellowstone Region: April 1–June 30, 2017

DATE	ORIGIN TIME	LATITUDE	LONGITUDE	DEPTH	MAG	NO	GAP	DMN	RMS
170616	09:32:48.07	44°47.00'	111°01.33'	8.0	1.5W	19	146	3	0.15
170616	09:39:25.92	44°46.67'	111°01.62'	6.8	0.5	11	218	3	0.14
170616	09:45:02.72	44°46.33'	111°01.90'	7.1	0.5	15	147	2	0.09
170616	09:54:17.50	44°33.60'	110°22.06'	3.1	1.0	11	131	3	0.09
170616	09:56:05.67	44°46.91'	111°01.63'	7.9	0.8	18	162	3	0.17
170616	09:56:25.72	44°46.61'	111°01.94'	7.7	0.2	16	139	3	0.12
170616	10:18:40.94	44°47.54'	111°01.29'	9.8	2.0W	21	118	4	0.13
170616	10:18:57.71	44°45.07'	111°02.87'	3.9	0.7	6	174	3	0.08
170616	10:38:14.75	44°47.27'	111°01.24'	10.9	2.2W	24	69	3	0.12
170616	10:44:17.09	44°46.11'	111°00.87'	7.6	0.5	14	147	1	0.13
170616	10:44:36.21	44°45.67'	111°02.47'	5.8	0.3	12	131	3	0.08
170616	10:52:11.94	44°47.00'	111°01.51'	10.3	1.6W	18	145	3	0.15
170616	10:56:34.48	44°46.30'	111°01.56'	6.9	0.4	16	148	2	0.14
170616	11:24:59.91	44°46.91'	111°01.18'	7.1	0.3	11	145	3	0.12
170616	11:25:27.97	44°46.67'	111°02.08'	8.4	0.7	12	140	3	0.13
170616	11:58:41.40	44°47.35'	111°01.36'	7.9	0.8	16	151	4	0.12
170616	11:59:18.96	44°44.84'	111°00.23'	8.1	1.5W	20	77	1	0.16
170616	12:07:23.61	44°44.33'	110°59.51'	6.4	0.2	13	89	3	0.11
170616	12:23:29.37	44°47.03'	111°01.93'	8.0	1.8W	20	144	3	0.14
170616	12:36:55.14	44°46.11'	111°01.08'	5.9	0.6	14	146	1	0.11
170616	12:37:16.44	44°46.00'	111°00.86'	5.6	0.3	9	188	1	0.19
170616	12:40:40.94	44°46.08'	111°01.21'	7.1	2.7W	23	145	1	0.13
170616	12:47:03.13	44°45.91'	111°00.98'	5.3	0.4	12	142	1	0.08
170616	12:47:20.76	44°45.82'	111°02.86'	6.3	0.2	11	131	3	0.09
170616	13:00:19.69	44°47.29'	111°01.55'	9.1	1.7W	20	149	4	0.14
170616	13:03:04.81	44°46.47'	111°01.20'	6.0	0.9	12	139	2	0.11
170616	13:03:08.45	44°46.84'	111°00.49'	6.1*	0.7	11	146	13	0.12
170616	13:03:53.29	44°46.85'	111°01.21'	8.2	1.7W	19	144	3	0.12
170616	13:15:35.75	44°46.29'	111°01.42'	7.1	-0.1	8	136	2	0.20
170616	13:15:58.58	44°46.79'	111°02.20'	8.9	1.5W	14	141	3	0.13
170616	13:17:41.88	44°47.29'	111°01.23'	10.2	2.6W	28	47	3	0.14
170616	13:17:59.32	44°46.26'	111°00.97'	7.8	1.9	9	149	2	0.07
170616	13:25:31.03	44°46.58'	111°00.96'	8.5	1.8W	22	141	2	0.14
170616	13:40:33.71	44°46.16'	111°01.18'	5.9	1.0	20	134	2	0.13
170616	13:46:32.92	44°46.24'	111°00.24'	6.8	0.3	9	189	1	0.08
170616	13:47:02.60	44°46.88'	111°00.33'	4.3	0.4	11	164	2	0.12
170616	13:47:08.40	44°46.47'	111°01.20'	5.1	0.2	8	153	2	0.06
170616	13:48:51.03	44°45.85'	111°02.21'	7.0	0.6	14	157	2	0.11
170616	13:51:04.77	44°46.76'	111°01.95'	8.3	1.4W	21	141	3	0.15
170616	13:52:55.66	44°45.27'	111°00.16'	4.1	0.6	10	127	1	0.09
170616	13:55:44.68	44°47.28'	111°01.08'	10.2	2.5W	27	47	3	0.14
170616	13:59:52.21	44°46.39'	111°00.88'	6.6	0.8	6	241	2	0.10
170616	14:00:32.64	44°46.65'	111°00.40'	7.0	0.7	10	185	2	0.11
170616	14:00:51.86	44°47.02'	111°02.30'	7.0	0.2	9	193	4	0.05
170616	14:01:50.28	44°46.40'	111°02.15'	6.7	1.2	12	148	3	0.15

Table 2. Earthquakes in the Yellowstone Region: April 1–June 30, 2017

DATE	ORIGIN TIME	LATITUDE	LONGITUDE	DEPTH	MAG	NO	GAP	DMN	RMS
170616	14:02:11.99	44°46.69'	111°00.58'	8.1	1.4W	14	159	2	0.10
170616	14:02:49.11	44°46.63'	111°00.45'	7.6	0.3	14	143	2	0.14
170616	14:03:01.70	44°46.70'	111°00.55'	8.1	0.9	19	143	2	0.17
170616	14:03:11.40	44°45.69'	111°00.47'	6.4	0.4	10	139	0	0.13
170616	14:03:23.84	44°46.57'	111°00.83'	7.3	0.4	8	142	2	0.12
170616	14:03:31.96	44°46.57'	111°00.92'	7.6	0.5	8	142	2	0.09
170616	14:07:27.61	44°46.44'	111°01.83'	6.6	0.4	7	246	3	0.07
170616	14:07:52.97	44°45.85'	110°58.25'	3.4	-0.1	7	174	3	0.16
170616	14:13:19.01	44°46.54'	111°00.32'	7.3	0.6	11	183	2	0.12
170616	14:18:47.17	44°45.56'	111°00.33'	4.8	1.0	16	137	0	0.18
170616	14:21:47.97	44°44.96'	111°01.30'	3.1	1.1	12	99	2	0.13
170616	14:22:05.22	44°45.18'	110°59.84'	4.4	0.6	5	185	1	0.01
170616	14:37:46.08	44°46.41'	111°00.55'	7.4	0.6	12	181	2	0.12
170616	14:37:53.92	44°45.94'	110°59.60'	3.7	0.7	7	201	1	0.07
170616	14:38:16.92	44°44.38'	111°00.24'	1.7	0.1	7	148	2	0.08
170616	14:40:54.71	44°46.90'	111°01.10'	8.9	1.0	17	145	3	0.13
170616	14:52:58.82	44°46.29'	111°00.96'	7.3	0.7	8	240	2	0.16
170616	14:58:44.38	44°46.66'	111°00.40'	8.0	1.5W	14	185	12	0.14
170616	15:06:15.56	44°46.70'	111°02.18'	7.7	1.2W	16	155	3	0.15
170616	15:07:24.17	44°46.65'	111°02.45'	7.7	2.3W	19	153	3	0.15
170616	15:10:47.08	44°46.73'	111°01.04'	6.3	0.2	9	245	2	0.05
170616	15:11:07.10	44°46.75'	111°01.05'	6.8	0.8	14	187	2	0.07
170616	15:17:16.70	44°46.26'	111°00.67'	7.2	0.9	15	150	1	0.14
170616	15:20:21.47	44°46.46'	111°00.64'	7.7	0.5	15	154	2	0.14
170616	15:22:23.62	44°46.77'	111°01.12'	8.1	1.6W	15	143	2	0.12
170616	15:26:50.80	44°47.10'	111°01.29'	7.1	0.9	17	148	3	0.12
170616	15:27:18.43	44°45.66'	111°02.40'	6.8	0.2	8	163	3	0.07
170616	15:29:07.47	44°46.57'	111°01.18'	8.1	1.0	13	141	2	0.10
170616	15:33:45.11	44°47.19'	111°00.92'	10.0	2.2W	21	69	3	0.15
170616	15:40:07.68	44°47.32'	111°02.36'	7.5	1.0	17	148	4	0.11
170616	15:40:20.44	44°46.52'	111°01.09'	8.2	1.1	18	140	2	0.13
170616	16:02:22.59	44°47.46'	111°01.97'	8.1	0.4	14	175	4	0.11
170616	16:02:38.77	44°47.23'	111°01.86'	4.4*	0.0	7	196	14	0.06
170616	16:22:58.27	44°45.96'	111°01.29'	5.3	0.5	11	142	1	0.08
170616	16:28:25.17	44°46.81'	111°01.61'	8.4	1.9W	19	113	3	0.16
170616	16:29:26.20	44°46.76'	111°01.83'	8.7	1.5W	19	112	3	0.15
170616	16:42:58.85	44°46.22'	111°01.35'	6.9	0.6	9	187	2	0.13
170616	16:46:35.67	44°46.82'	111°01.03'	9.3	2.0W	20	113	2	0.14
170616	16:54:46.60	44°46.17'	111°00.81'	6.9	0.9	15	148	1	0.14
170616	17:01:26.63	44°47.52'	111°01.12'	8.6	1.2	15	119	4	0.14
170616	17:01:44.34	44°46.26'	111°00.81'	5.0	0.3	14	150	1	0.10
170616	17:02:04.61	44°47.08'	111°02.25'	7.5	0.6	14	194	4	0.13
170616	17:02:26.51	44°46.39'	111°00.84'	7.4	0.4	11	193	2	0.11
170616	17:19:56.27	44°46.75'	111°01.16'	7.2	1.5W	15	159	2	0.14
170616	17:27:46.53	44°45.95'	111°02.02'	7.3	1.0	13	139	2	0.11

Table 2. Earthquakes in the Yellowstone Region: April 1–June 30, 2017

DATE	ORIGIN TIME	LATITUDE	LONGITUDE	DEPTH	MAG	NO	GAP	DMN	RMS
170616	17:47:26.83	44°47.31'	111°01.63'	7.8	0.7	14	149	4	0.14
170616	17:47:40.47	44°47.00'	111°01.33'	7.3	0.7	8	146	3	0.10
170616	17:48:09.29	44°46.77'	111°00.55'	9.1	1.0	19	113	2	0.15
170616	17:48:38.93	44°45.94'	111°00.40'	6.1	0.4	8	186	1	0.06
170616	17:49:35.66	44°45.21'	110°59.46'	8.0	1.7W	14	131	1	0.16
170616	18:02:16.27	44°46.09'	111°01.45'	6.1	0.9	15	133	2	0.13
170616	18:02:23.28	44°46.87'	111°01.63'	6.1	1.0	7	143	3	0.17
170616	18:11:03.67	44°45.58'	111°01.54'	4.8	0.4	11	133	2	0.08
170616	18:17:02.85	44°47.11'	111°01.82'	6.7	0.9	17	146	3	0.12
170616	18:29:17.51	44°46.86'	111°01.75'	7.5	0.1	15	143	3	0.13
170616	18:29:26.18	44°47.51'	111°02.13'	8.1	0.6	14	151	4	0.11
170616	18:29:32.40	44°46.88'	111°02.07'	8.1	1.7W	21	142	3	0.14
170616	18:32:21.69	44°46.10'	111°01.57'	6.6	0.6	16	144	2	0.17
170616	18:36:54.33	44°46.55'	111°00.68'	7.6	0.5	15	141	2	0.13
170616	18:48:48.29	44°46.23'	111°01.75'	7.0	0.6	13	145	2	0.14
170616	18:57:00.54	44°46.73'	111°01.96'	7.5	0.7	11	156	3	0.12
170616	19:16:05.77	44°47.53'	111°01.72'	10.3	1.6W	14	118	4	0.09
170616	19:26:10.51	44°47.69'	111°01.97'	9.5	1.6W	16	119	4	0.14
170616	19:29:55.16	44°46.75'	111°01.67'	4.6	0.8	11	158	3	0.10
170616	19:32:01.20	44°47.85'	111°02.58'	6.8	0.5	10	184	5	0.12
170616	19:36:37.70	44°46.40'	111°00.78'	7.6	0.9	8	181	2	0.05
170616	19:56:28.41	44°46.61'	111°01.72'	6.4	0.7	9	186	3	0.12
170616	19:59:19.93	44°46.25'	111°01.55'	7.6	0.9	14	147	2	0.16
170616	20:06:36.57	44°44.88'	110°44.31'	-1.7	1.2W	10	163	6	0.16
170616	20:24:32.64	44°46.15'	111°01.21'	6.4	0.4	10	146	2	0.09
170616	20:33:20.17	44°47.24'	111°01.00'	5.8	0.4	6	171	3	0.10
170616	20:50:57.91	44°47.45'	111°02.19'	6.4	0.6	8	174	4	0.11
170616	21:08:24.62	44°46.04'	111°02.08'	6.0	0.7	8	140	2	0.07
170616	21:08:30.95	44°45.21'	111°03.12'	4.9	0.3	6	175	4	0.04
170616	21:09:03.73	44°46.00'	111°01.86'	6.2	0.4	8	145	2	0.09
170616	21:09:52.80	44°47.15'	111°02.43'	9.5	2.2W	21	69	4	0.14
170616	21:12:00.64	44°45.15'	110°59.43'	8.1	1.6W	16	128	1	0.13
170616	21:12:25.76	44°44.88'	110°59.56'	7.6	1.8W	13	108	2	0.15
170616	21:19:46.77	44°46.13'	110°57.91'	2.5	0.3	10	183	3	0.08
170616	21:20:15.38	44°46.04'	111°00.20'	7.0	0.6	16	147	1	0.13
170616	21:22:45.99	44°45.12'	110°59.54'	7.5	0.6	11	123	1	0.08
170616	21:30:05.88	44°46.64'	111°00.65'	7.6	1.1	10	158	2	0.07
170616	21:35:44.60	44°44.67'	110°58.06'	3.3	0.3	10	123	3	0.07
170616	21:39:14.27	44°46.52'	111°01.33'	7.5	1.5W	14	110	2	0.13
170616	21:40:34.26	44°46.65'	111°02.26'	6.4	0.4	9	154	3	0.12
170616	21:44:58.11	44°44.86'	110°58.68'	5.0	0.6	12	124	3	0.12
170616	21:58:45.20	44°45.01'	110°58.58'	5.0	0.4	12	121	3	0.14
170616	22:00:25.06	44°44.95'	110°59.34'	6.9	0.5	14	118	2	0.12
170616	22:00:35.95	44°44.90'	110°59.92'	7.5	0.4	13	94	1	0.17
170616	22:00:44.96	44°44.82'	110°59.60'	6.7	0.7	14	103	2	0.15

Table 2. Earthquakes in the Yellowstone Region: April 1–June 30, 2017

DATE	ORIGIN TIME	LATITUDE	LONGITUDE	DEPTH	MAG	NO	GAP	DMN	RMS
170616	22:00:58.06	44°44.59'	110°58.68'	4.8	-0.1	13	114	3	0.15
170616	22:03:18.98	44°48.11'	111°03.29'	8.8	1.1	13	156	4	0.08
170616	22:07:55.90	44°46.86'	111°00.92'	8.5	0.9	14	145	3	0.13
170616	22:09:27.07	44°48.22'	111°02.97'	8.9	0.8	12	171	5	0.07
170616	22:23:11.81	44°46.32'	111°00.93'	6.7	0.7	13	138	2	0.11
170616	22:29:03.57	44°46.52'	111°01.13'	7.4	1.4W	19	140	2	0.16
170616	22:38:59.95	44°46.58'	111°01.11'	8.2	2.5W	23	111	2	0.16
170616	22:48:07.28	44°47.12'	111°02.24'	8.9	3.0W	26	115	4	0.14
170616	22:48:30.93	44°46.58'	111°01.89'	8.1	2.2	17	153	3	0.13
170616	23:02:23.50	44°47.02'	111°02.01'	9.3	2.2W	22	144	3	0.15
170616	23:20:12.16	44°47.01'	111°02.31'	8.7	1.4W	16	143	4	0.13
170616	23:28:17.25	44°44.87'	110°59.07'	5.9	0.2	10	119	2	0.12
170616	23:28:24.88	44°47.13'	111°01.25'	3.9	0.7	13	148	3	0.16
170616	23:33:44.33	44°46.82'	111°01.50'	7.3	0.4	17	143	3	0.14
170616	23:34:09.57	44°47.60'	111°01.49'	5.0	0.7	13	154	4	0.13
170616	23:59:12.11	44°46.94'	111°01.47'	6.6	0.7	18	145	3	0.13
170616	23:59:22.69	44°46.56'	111°01.09'	7.3	0.8	18	141	2	0.13
170617	00:00:22.93	44°47.00'	111°02.32'	8.2	1.3W	15	143	4	0.12
170617	00:10:16.98	44°46.96'	111°02.33'	8.1	1.6W	19	143	4	0.12
170617	00:10:38.36	44°46.52'	111°02.12'	7.6	0.3	16	138	3	0.14
170617	00:27:54.33	44°46.96'	111°01.57'	7.1	0.4	17	145	3	0.14
170617	00:40:36.29	44°47.33'	111°01.55'	9.8	2.5W	19	171	4	0.13
170617	00:43:02.74	44°46.67'	111°02.09'	7.8	1.7W	18	140	3	0.13
170617	00:55:39.14	44°46.39'	111°01.30'	5.9	0.7	13	137	2	0.12
170617	00:59:29.16	44°46.72'	111°00.64'	8.3	0.7	16	144	2	0.17
170617	01:01:58.25	44°46.88'	111°02.06'	7.2	0.4	10	142	3	0.06
170617	01:12:29.55	44°46.79'	111°01.00'	6.5	0.5	11	143	2	0.12
170617	01:14:22.66	44°46.23'	111°00.20'	5.3	0.2	10	237	1	0.06
170617	01:35:38.62	44°46.15'	111°00.25'	7.3	0.1	11	237	1	0.14
170617	01:36:07.93	44°45.84'	111°00.85'	5.5	1.1	14	141	1	0.12
170617	01:51:19.31	44°46.36'	111°00.36'	6.1	0.1	8	238	1	0.07
170617	01:54:04.92	44°47.07'	111°02.05'	8.2	1.8W	16	162	4	0.12
170617	02:03:00.22	44°46.36'	111°00.97'	7.5	0.2	11	151	2	0.11
170617	02:06:09.91	44°46.93'	111°01.37'	8.2	0.8	16	163	3	0.13
170617	02:56:57.92	44°45.23'	110°59.74'	8.0	1.3W	16	124	1	0.15
170617	02:57:38.49	44°46.88'	111°00.91'	8.6	0.8	16	145	3	0.13
170617	02:59:38.57	44°45.99'	111°00.62'	5.7	1.1	16	145	1	0.16
170617	03:06:45.92	44°44.93'	111°01.74'	13.9	2.4W	12	104	2	0.15
170617	03:09:55.63	44°46.95'	111°01.64'	8.4	1.3W	14	145	3	0.11
170617	03:10:34.68	44°44.13'	111°01.36'	11.6	1.4W	17	70	3	0.14
170617	03:42:05.24	44°44.44'	111°01.39'	10.8	1.3W	17	77	2	0.14
170617	03:54:29.70	44°46.74'	111°01.18'	5.7	0.4	11	159	2	0.11
170617	03:55:45.30	44°46.66'	111°02.15'	7.7	0.1	11	154	3	0.09
170617	04:03:58.92	44°46.48'	111°01.39'	6.6	0.3	14	183	2	0.11
170617	04:28:43.44	44°47.18'	111°01.22'	9.0	1.8W	18	149	3	0.15

Table 2. Earthquakes in the Yellowstone Region: April 1–June 30, 2017

DATE	ORIGIN TIME	LATITUDE	LONGITUDE	DEPTH	MAG	NO	GAP	DMN	RMS
170617	04:43:41.59	44°46.30'	111°02.54'	4.5	0.9	12	153	3	0.11
170617	04:49:15.89	44°46.90'	111°01.35'	8.2	1.8W	21	144	3	0.15
170617	04:51:59.30	44°46.34'	111°01.39'	7.7	1.6W	21	137	2	0.17
170617	05:03:33.28	44°47.13'	111°01.81'	5.2	0.5	8	204	3	0.10
170617	05:11:01.38	44°46.89'	111°01.72'	5.8	0.4	7	201	3	0.08
170617	05:16:11.20	44°46.76'	111°01.36'	6.5	0.3	10	187	3	0.08
170617	05:18:14.94	44°47.41'	111°01.96'	5.7	1.1W	17	150	4	0.17
170617	05:22:31.32	44°46.06'	111°01.15'	3.8	0.4	7	291	1	0.05
170617	05:22:52.35	44°46.40'	111°01.66'	6.0	0.6	15	150	2	0.12
170617	05:23:47.59	44°46.15'	111°01.31'	5.4	0.0	10	146	2	0.10
170617	05:28:48.16	44°46.02'	111°01.09'	6.2	0.5	13	144	1	0.12
170617	05:29:07.49	44°46.27'	111°01.31'	5.6	0.4	12	148	2	0.10
170617	05:38:57.65	44°46.27'	111°01.06'	7.5	0.6	16	136	2	0.12
170617	06:04:51.79	44°46.78'	111°01.00'	8.3	1.4W	16	143	2	0.11
170617	06:16:05.06	44°46.38'	111°00.58'	7.8	1.1	11	193	2	0.09
170617	07:07:57.06	44°47.45'	111°01.01'	5.8	0.8	15	154	4	0.15
170617	08:00:33.83	44°46.58'	111°00.73'	7.1	0.5	15	196	2	0.17
170617	08:02:02.91	44°47.04'	111°01.00'	8.0	0.6	15	147	3	0.11
170617	08:10:27.84	44°46.62'	111°01.44'	7.7	0.3	12	193	2	0.18
170617	08:10:46.59	44°46.71'	111°01.67'	8.8	0.6	11	141	3	0.11
170617	08:18:03.24	44°46.95'	111°02.19'	8.0	0.4	15	143	4	0.09
170617	08:20:30.04	44°47.22'	111°00.55'	7.0	1.2W	18	151	3	0.17
170617	08:20:52.25	44°46.59'	111°01.45'	5.3	-0.1	12	140	2	0.19
170617	08:21:58.83	44°47.07'	111°00.65'	7.4	0.9	20	116	3	0.16
170617	08:23:36.85	44°46.74'	111°01.17'	8.7	1.5W	18	143	2	0.14
170617	08:26:03.92	44°46.36'	110°59.68'	5.2	0.3	13	229	2	0.14
170617	08:26:21.82	44°46.00'	111°00.96'	6.7	0.7	13	144	1	0.11
170617	08:31:18.82	44°46.55'	111°01.57'	7.4	0.4	7	209	2	0.06
170617	08:34:36.65	44°47.73'	111°03.16'	7.4	0.5	12	151	5	0.10
170617	08:52:02.24	44°46.24'	111°01.96'	7.1	0.2	14	146	2	0.11
170617	09:02:46.22	44°41.13'	111°01.49'	4.9	1.7W	19	83	5	0.19
170617	09:27:06.20	44°45.90'	110°59.30'	5.2	-0.1	7	190	2	0.05
170617	09:27:19.96	44°46.97'	111°01.27'	8.2	0.4	13	164	3	0.15
170617	09:27:42.15	44°46.14'	111°01.55'	6.6	-0.1	10	192	2	0.10
170617	09:55:21.70	44°47.13'	111°01.65'	8.1	0.6	16	147	3	0.12
170617	09:56:37.39	44°46.95'	111°01.65'	4.8	0.7	18	145	3	0.20
170617	09:57:00.95	44°46.58'	111°01.11'	7.2	0.1	14	141	2	0.14
170617	10:01:49.31	44°48.33'	111°02.82'	10.2	1.6W	23	123	5	0.14
170617	10:13:12.22	44°46.15'	111°01.25'	6.8	0.9	15	146	2	0.18
170617	10:25:23.03	44°41.47'	111°01.30'	7.8	2.0W	14	62	5	0.15
170617	10:38:37.19	44°47.27'	111°01.28'	8.6	0.9	13	150	3	0.12
170617	10:45:11.87	44°47.98'	111°02.91'	9.4	0.9	14	155	5	0.12
170617	10:58:15.06	44°47.32'	111°01.88'	9.0	1.5W	20	150	4	0.15
170617	11:36:39.22	44°46.78'	111°01.23'	7.5	0.9	19	112	3	0.15
170617	12:04:40.19	44°47.74'	111°03.57'	7.8	0.9	16	149	4	0.10

Table 2. Earthquakes in the Yellowstone Region: April 1–June 30, 2017

DATE	ORIGIN TIME	LATITUDE	LONGITUDE	DEPTH	MAG	NO	GAP	DMN	RMS
170617	12:11:03.19	44°46.79'	111°00.75'	2.8	0.5	9	239	2	0.16
170617	12:43:02.11	44°46.68'	111°01.81'	9.0	1.2W	19	141	3	0.15
170617	12:43:29.69	44°46.16'	111°00.99'	6.6	0.2	14	135	1	0.12
170617	13:03:10.32	44°46.61'	111°00.50'	7.5	0.3	7	158	2	0.11
170617	13:25:20.91	44°46.67'	111°01.63'	8.1	1.3W	16	141	3	0.11
170617	13:25:51.00	44°46.85'	111°01.60'	7.1	0.2	10	143	3	0.14
170617	14:24:22.38	44°46.46'	110°59.76'	5.6	0.5	15	156	2	0.14
170617	14:56:46.70	44°46.29'	111°00.46'	7.1	0.5	7	239	1	0.09
170617	15:04:50.06	44°46.67'	111°01.90'	7.9	1.2W	16	140	3	0.14
170617	15:06:29.40	44°47.54'	111°00.62'	5.5	1.4W	13	155	4	0.16
170617	15:06:46.26	44°46.92'	111°01.34'	9.3	1.6W	15	144	3	0.16
170617	16:22:58.70	44°47.13'	111°01.31'	7.6	0.8	13	148	3	0.13
170617	16:35:21.45	44°47.13'	111°02.40'	9.7	2.4W	22	114	4	0.13
170617	16:37:10.66	44°45.00'	110°56.29'	-0.2	--	6	262	5	0.18
170617	16:37:33.59	44°46.42'	111°01.28'	8.1	0.5	7	152	2	0.14
170617	16:52:26.06	44°46.77'	111°00.60'	9.2	1.8W	20	144	2	0.14
170617	16:55:59.64	44°46.87'	111°00.84'	8.0	1.4W	16	145	2	0.15
170617	17:39:24.80	44°47.26'	111°02.40'	9.4	--	9	147	4	0.09
170617	17:41:11.32	44°46.89'	111°00.67'	8.0	0.8	15	146	2	0.13
170617	17:44:20.14	44°47.00'	111°02.33'	7.0	0.8	15	143	4	0.11
170617	18:09:45.94	44°47.16'	111°01.86'	8.2	0.5	9	167	4	0.09
170617	18:21:56.89	44°46.50'	111°01.78'	8.0	1.0	10	151	3	0.10
170617	18:34:35.60	44°11.20'	110°34.65'	11.9	0.9	8	176	9	0.16
170617	20:12:18.48	44°45.57'	110°58.72'	2.1	0.2	7	162	2	0.07
170617	20:12:22.20	44°46.25'	111°01.20'	6.7	1.2W	14	179	2	0.14
170617	20:19:30.70	44°44.60'	111°03.95'	4.3	0.8	6	143	5	0.12
170617	20:36:05.55	44°46.89'	111°01.85'	7.9	1.7W	18	143	3	0.15
170617	20:38:36.42	44°47.16'	111°00.35'	6.1	1.3W	15	150	3	0.15
170617	21:24:40.42	44°47.11'	111°00.74'	6.5	1.4W	18	149	3	0.15
170617	21:29:50.17	44°46.71'	111°00.00'	5.7	0.4	11	241	2	0.16
170617	21:43:51.25	44°46.58'	111°01.80'	6.2	0.3	10	149	3	0.09
170617	21:44:07.58	44°47.12'	111°00.71'	6.4	1.5W	15	149	3	0.15
170617	22:24:10.13	44°46.10'	111°01.73'	7.1	0.6	8	144	2	0.10
170617	22:35:18.06	44°10.84'	110°34.15'	11.3	0.8	7	205	10	0.15
170617	22:40:56.71	44°44.86'	110°59.17'	2.0	0.3	6	192	2	0.03
170617	23:58:29.64	44°46.84'	111°01.31'	7.7	1.3W	17	144	3	0.10
170618	01:28:32.01	44°47.47'	111°02.23'	9.8	2.8W	26	70	4	0.14
170618	01:33:18.14	44°47.02'	111°01.88'	8.3	1.4W	20	145	3	0.13
170618	02:51:20.37	44°46.75'	111°01.90'	8.3	0.9	19	141	3	0.16
170618	03:08:35.34	44°46.90'	111°01.02'	8.5	0.8	18	145	3	0.15
170618	03:08:42.80	44°46.31'	111°02.25'	6.2	0.8	7	171	3	0.14
170618	03:52:20.24	44°46.82'	111°01.85'	8.7	1.3W	18	142	3	0.14
170618	05:18:17.15	44°46.73'	111°01.85'	7.9	0.7	18	141	3	0.13
170618	05:31:58.97	44°45.88'	111°01.05'	7.2	0.6	15	141	1	0.12
170618	06:45:27.22	44°46.97'	111°01.44'	9.2	1.6W	17	145	3	0.14

Table 2. Earthquakes in the Yellowstone Region: April 1–June 30, 2017

DATE	ORIGIN TIME	LATITUDE	LONGITUDE	DEPTH	MAG	NO	GAP	DMN	RMS
170618	06:46:00.34	44°46.83'	111°01.46'	7.9	0.4	16	144	3	0.14
170618	07:12:22.59	44°46.94'	111°00.36'	7.2	0.5	7	244	3	0.10
170618	07:21:19.23	44°48.49'	111°00.92'	7.4	2.7W	24	127	5	0.17
170618	07:27:30.93	44°46.96'	111°02.03'	7.6	0.8	15	144	3	0.15
170618	07:50:24.52	44°47.86'	111°02.71'	7.3	1.6W	16	154	5	0.12
170618	08:12:34.12	44°46.91'	111°01.44'	7.9	1.2W	15	144	3	0.17
170618	08:19:52.13	44°47.13'	111°01.84'	8.0	0.7	19	146	4	0.12
170618	08:20:12.70	44°47.29'	111°00.21'	7.3	0.1	9	170	3	0.12
170618	08:23:23.32	44°46.11'	111°02.94'	6.5	-0.3	9	162	4	0.08
170618	08:23:44.33	44°45.68'	111°05.99'	4.4	-0.1	9	146	4	0.13
170618	08:24:12.04	44°46.70'	111°01.93'	7.9	0.3	17	140	3	0.11
170618	08:33:29.25	44°46.85'	111°01.97'	7.9	0.7	18	142	3	0.13
170618	08:40:09.11	44°47.88'	111°02.68'	7.9	0.7	17	154	5	0.12
170618	08:42:13.62	44°47.99'	111°02.77'	7.7	0.7	15	156	5	0.08
170618	08:52:31.43	44°46.99'	111°02.04'	8.1	0.5	19	144	3	0.12
170618	09:20:46.04	44°47.53'	111°02.64'	7.2	--	11	190	5	0.07
170618	09:20:47.82	44°47.49'	111°03.34'	7.3	0.9	8	173	4	0.06
170618	09:27:32.97	44°46.59'	111°00.71'	7.3	--	12	184	2	0.11
170618	09:27:34.63	44°46.06'	110°59.45'	4.6*	0.8	8	232	11	0.10
170618	10:16:30.10	44°46.39'	111°01.91'	4.5	0.8	13	149	3	0.10
170618	10:21:09.49	44°47.02'	111°01.95'	5.9	1.2W	18	144	3	0.15
170618	10:21:17.74	44°47.22'	111°01.84'	6.2	1.1	10	148	4	0.09
170618	10:25:09.89	44°47.27'	111°01.48'	5.7	0.5	13	166	3	0.07
170618	10:25:29.21	44°47.04'	111°02.11'	8.0	1.4	21	145	4	0.13
170618	10:37:02.12	44°45.90'	111°03.02'	4.8	1.2	8	151	4	0.08
170618	10:53:54.78	44°46.84'	111°01.77'	8.1	0.6	17	143	3	0.13
170618	11:15:36.50	44°47.03'	111°02.15'	8.1	1.8	20	144	4	0.12
170618	11:23:44.51	44°47.81'	111°02.35'	11.3	2.6W	32	50	5	0.19
170618	11:44:46.01	44°46.84'	111°02.05'	7.2	0.9	6	201	3	0.06
170618	11:46:24.18	44°47.92'	111°02.66'	7.0	0.1	7	156	5	0.03
170618	11:46:35.29	44°48.21'	111°02.67'	7.9	0.6	9	160	5	0.06
170618	11:47:01.32	44°46.87'	111°01.91'	7.0	0.4	11	143	3	0.12
170618	11:50:42.18	44°47.22'	111°02.13'	8.5	1.2	18	147	4	0.11
170618	12:04:22.53	44°48.12'	111°02.53'	7.6	0.6	15	158	5	0.10
170618	12:09:39.11	44°47.13'	111°02.23'	5.5	1.1	16	145	4	0.11
170618	12:13:29.96	44°46.50'	111°02.36'	5.8	0.2	9	137	3	0.13
170618	12:13:42.34	44°48.01'	111°02.28'	8.1	0.2	12	158	5	0.10
170618	12:24:11.11	44°46.85'	111°02.07'	8.2	0.3	19	142	3	0.11
170618	12:30:55.00	44°47.51'	111°02.49'	7.2	0.1	10	150	5	0.15
170618	12:42:15.14	44°46.97'	111°01.83'	7.0	1.3	18	144	3	0.13
170618	13:01:59.99	44°46.49'	111°02.41'	7.8	0.3	13	137	3	0.14
170618	13:14:01.14	44°48.08'	111°02.70'	7.7	0.3	11	158	5	0.07
170618	13:22:38.23	44°47.10'	111°01.95'	6.8	0.4	9	194	4	0.05
170618	13:26:54.97	44°47.22'	111°00.96'	8.0	0.5	16	150	3	0.16
170618	13:29:54.25	44°47.04'	111°02.12'	8.9	1.0	20	100	4	0.13

Table 2. Earthquakes in the Yellowstone Region: April 1–June 30, 2017

DATE	ORIGIN TIME	LATITUDE	LONGITUDE	DEPTH	MAG	NO	GAP	DMN	RMS
170618	13:33:29.43	44°46.59'	111°02.09'	7.3	0.2	16	138	3	0.15
170618	13:33:47.20	44°46.95'	111°02.08'	8.1	0.7	15	144	3	0.11
170618	15:18:39.34	44°46.87'	111°01.16'	6.5	0.7	11	145	3	0.12
170618	15:34:59.07	44°46.87'	111°01.40'	6.5	0.1	7	144	3	0.10
170618	15:35:16.63	44°46.86'	111°01.48'	7.2	0.6	12	144	3	0.10
170618	15:41:44.57	44°48.38'	111°03.05'	9.1	2.1W	22	53	5	0.12
170618	15:44:18.75	44°46.51'	111°03.00'	4.0	0.7	13	135	4	0.15
170618	15:44:25.49	44°46.01'	111°01.57'	6.6	0.9	7	133	2	0.06
170618	15:45:10.58	44°46.96'	111°01.25'	6.6	1.2W	16	146	3	0.14
170618	15:46:32.51	44°48.48'	111°02.92'	9.5	2.2W	21	53	5	0.12
170618	15:55:32.81	44°47.70'	111°01.33'	9.3	1.6W	19	70	4	0.14
170618	15:55:58.22	44°47.57'	111°02.08'	9.1	2.0W	19	118	4	0.11
170618	16:10:34.02	44°47.00'	111°01.40'	7.4	0.8	8	146	3	0.06
170618	16:10:58.38	44°47.04'	111°01.24'	7.7	0.5	9	146	3	0.08
170618	16:23:14.75	44°47.16'	111°01.25'	7.3	0.8	13	148	3	0.07
170618	16:36:09.53	44°48.03'	111°02.74'	7.2	0.8	12	156	5	0.08
170618	16:46:36.62	44°47.58'	111°02.59'	6.6	0.7	12	150	5	0.11
170618	17:03:22.83	44°47.19'	111°01.91'	7.9	0.4	8	148	4	0.06
170618	17:03:28.23	44°47.39'	111°02.12'	7.9	1.1	10	149	4	0.07
170618	17:19:21.32	44°47.36'	111°01.55'	8.1	1.6W	17	117	4	0.11
170618	17:24:42.36	44°47.61'	111°02.75'	7.1	0.8	10	151	5	0.13
170618	17:33:11.81	44°47.47'	111°01.92'	7.7	0.7	15	118	4	0.10
170618	17:58:49.50	44°48.03'	111°02.43'	7.4	0.8	11	158	5	0.09
170618	18:06:55.55	44°47.74'	111°02.04'	9.9	1.7W	18	120	5	0.10
170618	18:10:30.78	44°47.72'	111°02.00'	9.5	1.6W	17	119	5	0.11
170618	18:21:58.29	44°46.89'	111°01.11'	7.2	0.7	11	145	3	0.06
170618	19:11:52.43	44°47.19'	111°01.99'	1.5	0.6	11	147	4	0.20
170618	19:52:13.42	44°47.90'	111°02.81'	7.3	1.1	11	155	5	0.11
170618	19:52:33.49	44°47.55'	111°02.91'	6.7	0.4	8	149	5	0.16
170618	19:54:16.92	44°46.87'	111°01.29'	7.7	0.4	12	144	3	0.04
170618	19:59:02.52	44°47.35'	111°01.78'	6.9	0.7	13	150	4	0.09
170618	20:00:09.35	44°47.02'	111°01.20'	7.6	0.6	10	146	3	0.12
170618	20:08:00.16	44°47.34'	111°00.80'	6.1	1.5W	17	152	3	0.13
170618	20:11:17.68	44°47.54'	111°00.95'	5.4	0.8	12	154	4	0.11
170618	20:31:56.54	44°45.55'	111°01.20'	6.3	1.2W	17	127	1	0.13
170618	20:32:34.62	44°47.73'	111°01.82'	7.0	1.4W	19	70	4	0.16
170618	21:26:02.89	44°47.15'	111°00.86'	6.4	0.4	8	149	3	0.10
170618	21:27:46.17	44°47.54'	111°02.78'	6.9	0.6	13	149	5	0.08
170618	21:37:01.63	44°47.30'	111°01.25'	8.2	1.5W	16	116	3	0.10
170618	21:51:53.91	44°47.59'	111°01.99'	8.6	1.8W	17	119	4	0.09
170618	22:06:19.47	44°47.25'	111°01.99'	7.5	0.6	8	148	4	0.07
170618	22:06:32.21	44°46.87'	111°01.86'	6.4	0.4	8	143	3	0.13
170618	22:42:21.16	44°48.20'	111°02.32'	8.1	0.6	12	161	5	0.10
170618	23:22:55.00	44°47.63'	111°02.60'	7.0	1.5	9	178	5	0.06
170618	23:49:46.32	44°46.00'	111°01.52'	6.2	0.3	13	142	2	0.17

Table 2. Earthquakes in the Yellowstone Region: April 1–June 30, 2017

DATE	ORIGIN TIME	LATITUDE	LONGITUDE	DEPTH	MAG	NO	GAP	DMN	RMS
170618	23:51:22.03	44°46.05'	111°01.26'	5.9	0.6	13	190	1	0.12
170619	00:37:27.66	44°46.96'	111°01.65'	5.0	0.7	8	163	3	0.06
170619	00:50:07.78	44°47.37'	111°02.24'	6.6	1.0	13	149	4	0.07
170619	00:51:58.16	44°46.12'	111°02.10'	3.8	0.7	7	175	3	0.07
170619	01:01:24.06	44°47.24'	111°02.41'	9.3	1.5W	16	116	4	0.10
170619	01:18:17.21	44°46.62'	111°02.18'	7.5	1.3W	18	111	3	0.10
170619	01:19:03.70	44°47.93'	111°02.37'	8.2	1.6W	18	70	5	0.12
170619	01:19:37.07	44°47.77'	111°02.00'	7.8	0.6	10	169	5	0.13
170619	01:20:43.86	44°47.49'	111°01.76'	8.4	1.4W	17	118	4	0.13
170619	01:23:00.75	44°47.83'	111°02.40'	8.0	1.4W	17	120	5	0.08
170619	01:46:58.32	44°50.72'	110°57.89'	4.9	0.4	8	268	10	0.12
170619	01:47:11.01	44°46.60'	111°03.95'	5.8	0.3	8	160	4	0.11
170619	02:20:28.77	44°48.03'	111°02.52'	8.5	1.4W	14	122	5	0.11
170619	02:56:52.09	44°46.52'	111°00.46'	5.9	0.8	14	183	2	0.15
170619	03:10:20.37	44°47.65'	111°02.68'	7.1	0.9	12	119	5	0.12
170619	03:12:10.93	44°47.14'	111°01.48'	10.5	3.0W	31	69	3	0.14
170619	03:21:43.51	44°46.88'	111°01.16'	8.5	1.9W	20	113	3	0.12
170619	03:28:18.87	44°46.75'	111°01.13'	9.9	0.7	13	143	2	0.11
170619	03:35:22.48	44°47.07'	111°01.39'	10.6	2.2W	17	115	3	0.12
170619	03:45:38.70	44°47.40'	111°02.23'	8.1	0.8	13	149	4	0.08
170619	04:36:08.18	44°46.82'	111°01.39'	8.5	0.9	15	113	3	0.14
170619	04:49:50.01	44°46.87'	111°01.46'	7.4	0.7	12	144	3	0.12
170619	05:01:11.05	44°44.84'	111°01.92'	4.9	0.8	8	160	2	0.06
170619	05:02:31.59	44°47.12'	111°01.66'	8.6	0.6	14	115	3	0.09
170619	05:04:24.97	44°47.49'	111°02.16'	7.1	1.2W	16	118	4	0.12
170619	05:15:30.43	44°47.56'	111°02.68'	9.3	1.8W	19	118	5	0.11
170619	05:24:40.12	44°47.55'	111°02.38'	8.0	0.4	13	151	5	0.09
170619	08:22:31.90	44°47.00'	111°02.54'	8.9	0.9	15	113	4	0.15
170619	08:46:30.97	44°46.97'	111°00.78'	7.3	2.1W	23	114	3	0.16
170619	09:11:06.85	44°47.58'	111°02.15'	9.1	1.4W	19	118	4	0.10
170619	09:27:54.33	44°46.90'	111°02.17'	7.9	1.2W	15	143	3	0.11
170619	09:46:41.27	44°47.16'	111°00.87'	7.2	0.9	15	149	3	0.14
170619	10:16:49.41	44°47.21'	111°01.55'	7.4	0.6	14	149	3	0.10
170619	11:34:13.50	44°46.90'	111°01.81'	6.2	1.2W	18	143	3	0.16
170619	11:45:47.26	44°46.21'	111°00.84'	5.9	0.7	9	149	1	0.09
170619	12:16:18.92	44°46.42'	111°01.31'	7.7	0.5	11	139	2	0.09
170619	12:55:36.80	44°46.50'	111°02.66'	7.6	0.3	7	136	3	0.10
170619	12:56:01.61	44°46.95'	111°01.81'	7.1	0.5	13	144	3	0.11
170619	13:03:44.02	44°46.85'	111°01.74'	6.2	1.2W	17	143	3	0.14
170619	14:17:03.01	44°46.19'	111°01.56'	7.3	0.7	12	156	2	0.12
170619	14:17:49.07	44°46.90'	111°02.01'	8.8	1.6W	16	142	3	0.11
170619	14:22:54.06	44°47.20'	111°01.32'	6.9	0.8	17	116	3	0.10
170619	14:29:11.74	44°45.95'	111°00.27'	5.1	0.4	7	234	1	0.04
170619	14:43:10.37	44°47.35'	111°01.98'	6.5	0.4	12	165	4	0.10
170619	15:06:38.01	44°46.79'	111°02.52'	7.6	0.3	10	140	4	0.08

Table 2. Earthquakes in the Yellowstone Region: April 1–June 30, 2017

DATE	ORIGIN TIME	LATITUDE	LONGITUDE	DEPTH	MAG	NO	GAP	DMN	RMS
170619	15:14:35.90	44°47.34'	111°00.75'	6.6	0.6	13	152	3	0.06
170619	15:14:53.42	44°46.71'	111°02.33'	7.9	0.7	12	139	3	0.13
170619	15:35:34.91	44°47.83'	111°02.30'	8.7	1.0	15	120	5	0.12
170619	15:49:22.74	44°47.20'	111°02.13'	6.7	1.2W	14	147	4	0.11
170619	16:19:35.89	44°47.34'	111°01.95'	8.0	1.5W	18	117	4	0.14
170619	17:05:21.23	44°46.83'	111°01.82'	6.7	1.1	15	143	3	0.11
170619	17:47:44.19	44°46.94'	111°02.15'	9.6	1.4W	13	143	6	0.10
170619	18:07:31.40	44°46.82'	111°02.17'	7.5	1.0	15	141	3	0.15
170619	18:50:20.76	44°47.28'	111°01.79'	7.4	1.4W	15	116	4	0.11
170619	19:00:20.16	44°47.26'	111°01.31'	8.6	1.5W	21	116	3	0.10
170619	19:42:58.09	44°46.91'	111°02.38'	7.8	0.8	12	142	4	0.09
170619	19:46:01.76	44°46.95'	111°01.33'	6.6	0.6	13	146	3	0.08
170619	19:46:49.55	44°46.57'	111°01.25'	7.2	1.0	14	141	2	0.11
170619	19:54:15.10	44°47.07'	111°02.44'	6.3	0.9	13	144	4	0.14
170619	19:54:34.62	44°47.17'	111°01.91'	6.0	0.6	9	163	4	0.13
170619	19:57:07.83	44°46.14'	111°03.37'	6.0	0.6	11	152	4	0.13
170619	20:19:03.27	44°46.37'	111°01.68'	7.9	0.8	15	149	2	0.14
170619	20:50:18.43	44°48.07'	111°03.12'	8.5	0.4	8	156	6	0.04
170619	22:57:17.49	44°44.82'	110°47.38'	4.0	1.1W	9	157	7	0.12
170619	23:01:01.16	44°45.28'	110°47.03'	7.7	1.3	11	171	6	0.15
170619	23:30:42.48	44°47.42'	111°03.80'	7.9	0.6	12	144	3	0.07
170619	23:44:55.39	44°46.92'	111°02.17'	7.6	0.5	12	160	3	0.15
170620	00:15:36.49	44°47.22'	111°01.71'	7.8	0.8	13	148	4	0.12
170620	01:50:32.49	44°47.11'	111°01.30'	7.2	0.7	14	148	3	0.15
170620	02:41:19.95	44°47.61'	111°03.46'	6.7	0.7	10	148	4	0.05
170620	03:43:21.95	44°46.67'	111°02.15'	7.8	0.2	16	140	3	0.15
170620	05:39:39.01	44°44.35'	111°00.97'	11.8	0.7	14	65	2	0.13
170620	05:43:01.18	44°46.90'	111°01.97'	7.4	0.5	13	144	3	0.13
170620	06:25:38.16	44°46.08'	111°02.31'	7.2	0.6	11	193	3	0.13
170620	07:10:06.69	44°46.79'	111°01.46'	7.9	0.4	12	143	3	0.13
170620	07:13:01.43	44°46.34'	111°01.60'	7.1	0.5	9	149	2	0.08
170620	07:34:13.64	44°46.81'	111°01.76'	5.9	0.6	10	159	3	0.08
170620	08:21:58.58	44°47.33'	111°01.98'	8.7	1.0	14	117	4	0.13
170620	08:44:00.27	44°46.88'	111°02.57'	6.4	0.6	10	141	4	0.10
170620	09:13:23.31	44°47.40'	111°04.18'	7.9	1.9W	19	142	3	0.12
170620	09:22:37.44	44°47.01'	111°01.83'	6.4	0.5	13	145	3	0.09
170620	09:43:08.07	44°46.69'	111°02.07'	7.9	0.3	9	140	3	0.10
170620	10:11:54.67	44°47.59'	111°02.26'	7.8	1.8W	21	118	5	0.14
170620	11:09:20.09	44°46.84'	111°01.05'	7.9	0.5	16	145	3	0.13
170620	11:15:14.51	44°47.60'	110°48.14'	5.9	0.9W	12	208	4	0.14
170620	11:24:49.99	44°46.54'	111°01.04'	6.2	0.6	7	195	2	0.10
170620	11:54:38.98	44°46.26'	111°00.79'	6.4	0.3	7	240	1	0.11
170620	12:08:19.77	44°47.50'	111°01.20'	6.9	--	12	153	4	0.15
170620	12:08:23.85	44°46.93'	111°01.63'	7.7	2.1W	12	145	3	0.10
170620	12:18:21.80	44°47.44'	111°01.97'	6.7	0.8	15	150	4	0.12

Table 2. Earthquakes in the Yellowstone Region: April 1–June 30, 2017

DATE	ORIGIN TIME	LATITUDE	LONGITUDE	DEPTH	MAG	NO	GAP	DMN	RMS
170620	13:24:26.09	44°47.02'	111°02.51'	7.7	0.9	13	143	4	0.12
170620	13:34:52.82	44°47.27'	111°01.67'	8.6	0.8	16	149	4	0.16
170620	13:45:51.96	44°47.05'	111°02.32'	7.1	0.7	18	144	4	0.14
170620	14:25:26.86	44°47.05'	111°02.09'	7.8	1.6	20	145	4	0.11
170620	14:25:57.87	44°46.91'	111°02.03'	7.4	--	12	143	3	0.06
170620	14:26:01.98	44°46.19'	111°02.29'	6.0	1.1	7	165	3	0.11
170620	14:30:47.53	44°47.31'	111°02.15'	7.8	1.1	18	148	4	0.11
170620	14:33:05.32	44°46.34'	111°00.83'	9.6	0.5	15	138	2	0.11
170620	14:50:44.49	44°47.02'	111°02.33'	7.6	0.8	17	143	4	0.12
170620	14:57:07.43	44°46.94'	111°01.88'	6.6	0.6	15	144	3	0.10
170620	15:35:58.55	44°48.50'	111°22.36'	10.2	0.8	8	133	5	0.08
170620	15:37:05.36	44°46.82'	111°01.63'	2.8	0.8	10	251	3	0.11
170620	15:47:36.60	44°46.19'	111°01.29'	8.8	0.5	10	135	2	0.07
170620	15:54:42.53	44°46.98'	111°02.11'	7.4	0.9	18	144	3	0.07
170620	17:22:23.42	44°41.42'	111°01.49'	2.3	0.7	8	112	5	0.21
170620	18:15:12.21	44°47.87'	111°02.69'	7.0	1.4	19	154	5	0.16
170620	19:51:20.81	44°46.92'	111°01.56'	8.0	-0.4	6	145	3	0.04
170620	21:03:31.01	44°46.82'	111°01.83'	8.1	1.5W	12	142	3	0.10
170620	22:36:06.29	44°47.42'	111°01.54'	8.3	1.7W	16	117	4	0.12
170620	23:22:38.69	44°46.68'	111°01.05'	5.9	0.6	11	159	2	0.09
170620	23:26:42.74	44°47.30'	111°02.56'	8.2	1.4W	16	115	4	0.13
170620	23:55:29.36	44°46.93'	111°01.57'	6.8	0.8	13	145	3	0.13
170621	00:19:19.46	44°46.80'	111°02.44'	6.6	0.3	14	140	4	0.14
170621	00:19:24.21	44°47.26'	111°02.68'	6.6	0.8	9	146	4	0.10
170621	00:27:19.61	44°48.11'	111°02.03'	6.5	0.7	12	122	5	0.10
170621	01:16:03.74	44°27.57'	110°54.15'	4.7	0.8W	9	157	5	0.20
170621	01:58:23.65	44°48.10'	111°02.13'	6.1	0.4	11	159	5	0.15
170621	04:33:42.42	44°47.30'	111°01.79'	7.5	--	12	149	4	0.08
170621	04:51:59.41	44°47.88'	111°02.41'	7.9	0.4	12	156	5	0.09
170621	05:40:39.76	44°46.48'	111°01.28'	7.3	0.6	10	153	2	0.14
170621	06:17:02.60	44°47.52'	111°01.81'	8.0	0.7	13	118	4	0.10
170621	08:12:37.61	44°48.02'	111°02.79'	7.5	1.6W	18	121	5	0.12
170621	08:32:18.87	44°47.33'	111°01.48'	8.9	1.4W	14	117	4	0.12
170621	08:54:56.53	44°47.85'	111°03.89'	6.7	0.7	11	150	3	0.14
170621	09:18:31.62	44°46.39'	111°01.26'	5.2	0.5	12	137	2	0.14
170621	09:25:27.68	44°47.56'	111°02.19'	7.9	0.6	11	151	4	0.08
170621	09:31:47.77	44°46.74'	111°01.72'	7.0	0.2	12	141	3	0.11
170621	09:40:43.60	44°46.77'	111°02.30'	7.0	0.4	12	141	3	0.15
170621	11:52:41.07	44°47.20'	111°00.93'	6.5	1.3W	13	150	3	0.12
170621	11:58:00.77	44°45.46'	111°01.25'	6.5	0.4	11	126	1	0.12
170621	12:03:09.29	44°45.33'	111°01.07'	6.9	0.9	10	115	1	0.14
170621	12:21:06.55	44°46.18'	110°59.82'	7.7	1.7W	19	69	1	0.17
170621	12:23:40.38	44°46.26'	110°59.94'	7.5	1.6W	19	69	1	0.19
170621	13:29:46.35	44°47.36'	111°01.17'	6.3	0.8	7	245	3	0.06
170621	13:34:32.53	44°46.69'	111°02.92'	5.7	0.1	10	143	4	0.17

Table 2. Earthquakes in the Yellowstone Region: April 1–June 30, 2017

DATE	ORIGIN TIME	LATITUDE	LONGITUDE	DEPTH	MAG	NO	GAP	DMN	RMS
170621	13:34:41.07	44°46.54'	111°02.39'	8.1	1.2W	15	137	3	0.15
170621	14:06:12.30	44°45.35'	111°01.37'	6.6	0.8	14	123	1	0.17
170621	14:44:54.23	44°46.57'	111°02.21'	6.6	0.3	8	138	3	0.14
170621	16:13:42.84	44°46.72'	111°02.46'	7.6	0.5	11	139	4	0.08
170621	16:33:06.56	44°35.77'	110°27.80'	2.1	1.2	13	139	6	0.15
170621	16:37:28.61	44°46.28'	111°00.87'	6.8	1.5W	17	137	1	0.11
170621	17:16:45.45	44°46.45'	111°00.81'	7.0	1.0	16	139	2	0.14
170621	17:31:16.51	44°46.96'	111°00.93'	9.6	2.7W	29	45	3	0.15
170621	18:05:35.99	44°46.29'	111°00.93'	6.9	1.2W	18	137	2	0.14
170621	18:37:04.63	44°46.75'	111°00.99'	6.4	0.6	15	143	2	0.17
170621	18:37:35.51	44°46.88'	111°00.56'	6.1	0.7	14	146	2	0.12
170621	19:28:15.08	44°46.20'	111°00.01'	5.4	0.1	7	238	1	0.04
170621	20:03:43.66	44°46.76'	111°02.28'	7.6	0.8	13	141	3	0.09
170621	20:20:52.78	44°46.29'	111°00.50'	6.6	0.7	12	179	1	0.10
170621	20:41:26.61	44°46.43'	111°00.89'	6.0	0.7	7	241	2	0.18
170621	21:49:21.63	44°46.91'	111°02.69'	8.6	2.5W	23	113	4	0.12
170621	21:49:54.70	44°46.84'	111°02.29'	7.5	2.1W	17	141	3	0.11
170621	21:58:37.05	44°48.02'	111°01.38'	4.4	1.0	12	161	5	0.11
170621	22:16:27.53	44°47.21'	111°02.58'	9.3	2.9W	27	115	4	0.13
170621	22:18:14.20	44°47.86'	111°00.49'	4.6	1.4W	15	160	4	0.08
170621	22:21:07.03	44°46.20'	111°01.60'	6.8	0.4	9	146	2	0.11
170621	23:57:06.27	44°47.23'	111°01.85'	8.1	0.7	14	164	4	0.10
170622	01:58:03.62	44°47.24'	111°00.45'	5.3	0.4	9	151	3	0.09
170622	02:51:43.66	44°45.35'	110°59.71'	5.0	0.5	12	137	1	0.10
170622	03:20:39.62	44°45.86'	111°02.02'	8.3	0.2	8	137	2	0.11
170622	04:47:26.65	44°46.90'	111°02.14'	7.4	0.3	8	143	3	0.06
170622	06:31:45.47	44°46.41'	111°02.06'	7.4	0.4	12	136	3	0.13
170622	06:52:23.03	44°46.08'	111°00.35'	6.2	0.3	12	236	1	0.10
170622	06:54:07.82	44°46.73'	111°01.11'	7.4	1.2W	16	112	2	0.11
170622	07:37:06.97	44°47.03'	111°02.17'	8.3	1.4W	19	114	4	0.13
170622	08:19:51.76	44°45.85'	111°00.45'	6.9	1.3W	20	104	1	0.18
170622	08:45:27.27	44°47.32'	111°01.42'	8.3	1.2W	16	117	4	0.10
170622	10:24:08.76	44°46.97'	111°01.70'	7.6	0.9	16	145	3	0.13
170622	11:11:52.64	44°47.15'	111°01.43'	6.4	1.5W	17	148	3	0.15
170622	11:35:52.32	44°46.55'	111°00.66'	6.2	1.0	11	195	2	0.10
170622	12:10:55.10	44°47.33'	111°01.36'	8.1	0.7	16	117	4	0.14
170622	13:12:58.00	44°46.49'	111°01.71'	7.6	0.3	13	151	2	0.14
170622	13:57:23.03	44°46.96'	111°01.67'	7.2	1.0	15	145	3	0.14
170622	15:00:51.42	44°47.15'	111°02.39'	5.3	0.4	13	145	4	0.10
170622	16:29:41.58	44°47.25'	111°01.54'	8.7	2.1W	20	116	3	0.13
170622	19:49:56.19	44°48.99'	111°00.40'	7.8	0.5	7	224	6	0.03
170622	20:36:44.46	44°47.24'	111°01.08'	7.7	1.4W	16	150	3	0.13
170622	23:11:43.99	44°46.85'	111°01.64'	8.6	0.5	10	143	3	0.12
170622	23:51:19.77	44°47.77'	111°01.37'	8.5	0.7	10	172	4	0.05
170623	00:00:36.53	44°47.00'	111°01.39'	7.9	0.8	18	146	3	0.14

Table 2. Earthquakes in the Yellowstone Region: April 1–June 30, 2017

DATE	ORIGIN TIME	LATITUDE	LONGITUDE	DEPTH	MAG	NO	GAP	DMN	RMS
170623	01:30:15.67	44°46.73'	111°01.83'	4.7	0.3	12	141	3	0.08
170623	04:42:43.43	44°47.15'	111°01.58'	7.9	0.7	14	147	3	0.10
170623	05:17:03.02	44°47.14'	111°01.28'	8.2	0.5	13	148	3	0.14
170623	05:25:18.03	44°47.52'	111°01.01'	6.2	0.6	15	154	4	0.13
170623	06:48:04.40	44°47.57'	111°01.08'	6.1	0.8	14	155	4	0.12
170623	06:48:18.63	44°28.21'	110°33.36'	4.6	0.3	12	144	4	0.11
170623	06:52:09.36	44°47.20'	111°00.76'	8.1	1.6W	16	151	3	0.12
170623	08:58:14.42	44°47.75'	111°02.56'	6.5	0.5	15	154	5	0.10
170623	09:20:47.32	44°46.73'	111°01.82'	7.9	0.0	13	141	3	0.09
170623	09:45:34.43	44°47.36'	110°59.62'	4.7	0.5	14	155	3	0.14
170623	10:02:31.26	44°45.40'	111°08.97'	11.4	0.4	15	85	4	0.12
170623	10:12:56.60	44°48.43'	111°01.27'	6.9	0.4	14	167	5	0.05
170623	13:56:15.20	44°47.11'	111°01.23'	6.8	0.7	15	148	3	0.15
170623	14:12:01.69	44°46.92'	111°01.25'	7.9	0.1	12	145	3	0.09
170623	14:53:57.24	44°48.04'	111°00.40'	5.0	1.3	15	164	5	0.16
170623	15:01:45.79	44°46.88'	111°01.59'	7.3	0.2	12	144	3	0.11
170623	15:08:22.44	44°46.97'	111°02.40'	8.1	1.3	16	160	4	0.12
170623	15:41:46.80	44°47.29'	111°01.22'	7.2	0.9	16	150	3	0.14
170623	16:46:19.13	44°46.78'	111°01.52'	6.6	0.0	11	142	3	0.16
170623	16:46:30.50	44°46.13'	111°01.95'	6.4	0.2	10	133	2	0.17
170623	16:46:46.41	44°47.03'	111°01.38'	7.2	0.7	9	146	3	0.12
170623	16:47:36.33	44°46.70'	111°01.36'	6.5	0.1	10	142	2	0.10
170623	17:59:24.31	44°46.98'	111°01.84'	6.8	0.7	16	144	3	0.11
170623	18:11:40.08	44°47.23'	111°01.73'	7.1	0.5	13	148	4	0.11
170623	18:21:44.46	44°47.17'	111°01.68'	7.5	0.5	15	164	3	0.12
170623	18:22:04.95	44°46.85'	111°02.28'	7.9	1.3	20	141	3	0.12
170623	18:44:13.44	44°46.85'	111°02.39'	7.0	0.3	12	141	4	0.06
170623	19:14:33.90	44°46.86'	111°01.90'	6.4	0.7	16	142	3	0.12
170623	20:37:32.87	44°24.29'	110°41.11'	2.0	1.0	10	93	9	0.24
170623	23:45:53.03	44°46.30'	111°01.14'	6.6	0.2	8	211	2	0.11
170623	23:46:50.86	44°45.54'	111°00.21'	5.9	1.6W	21	128	0	0.14
170623	23:55:14.38	44°47.14'	111°00.96'	6.8	0.6	14	149	3	0.12
170624	00:09:25.53	44°45.59'	111°00.21'	5.5	0.6	15	129	0	0.12
170624	00:12:46.39	44°46.99'	111°01.28'	7.1	0.8	12	146	3	0.11
170624	00:31:59.30	44°45.50'	111°00.27'	5.2	0.3	8	125	0	0.11
170624	01:53:46.87	44°47.02'	111°00.90'	7.4	0.5	14	147	3	0.14
170624	01:54:05.85	44°47.09'	111°00.88'	6.8	0.0	12	149	3	0.13
170624	02:10:29.37	44°47.08'	111°01.72'	8.1	0.8	18	146	3	0.13
170624	02:35:42.66	44°46.70'	111°01.18'	6.9	0.6	15	198	2	0.17
170624	02:58:49.72	44°48.00'	111°02.70'	6.9	0.3	15	156	5	0.11
170624	03:00:03.01	44°46.93'	111°02.42'	6.2	0.3	11	142	4	0.08
170624	03:43:05.34	44°47.04'	111°01.18'	8.5	0.5	12	147	3	0.12
170624	04:31:46.91	44°46.73'	111°00.84'	8.6	0.9	19	144	2	0.13
170624	05:11:48.51	44°46.99'	111°00.83'	9.9	1.3W	19	147	3	0.12
170624	05:15:59.35	44°46.74'	111°00.90'	8.4	0.6	16	143	2	0.11

Table 2. Earthquakes in the Yellowstone Region: April 1–June 30, 2017

DATE	ORIGIN TIME	LATITUDE	LONGITUDE	DEPTH	MAG	NO	GAP	DMN	RMS
170624	05:17:41.82	44°47.14'	111°01.82'	8.8	1.5W	15	163	3	0.14
170624	05:44:10.68	44°46.90'	111°01.44'	7.7	1.0	8	144	3	0.09
170624	05:48:26.20	44°46.70'	111°00.92'	6.8	0.6	13	143	2	0.16
170624	07:01:58.77	44°47.54'	111°00.59'	9.8	0.3	9	229	4	0.13
170624	07:03:25.37	44°46.90'	111°01.25'	9.6	2.6W	25	145	3	0.13
170624	07:25:46.07	44°46.84'	111°00.83'	8.3	1.2W	16	145	2	0.11
170624	08:12:51.17	44°46.25'	111°00.79'	7.2	0.2	14	150	1	0.10
170624	08:17:24.77	44°46.27'	111°01.23'	4.4	0.6	8	206	2	0.10
170624	09:08:51.40	44°48.06'	111°02.45'	7.8	1.2W	16	158	5	0.12
170624	09:33:57.73	44°46.77'	111°01.19'	8.3	1.3W	17	143	2	0.09
170624	09:47:27.61	44°46.68'	111°00.91'	6.0	0.4	17	158	2	0.16
170624	10:12:46.54	44°46.99'	111°00.94'	8.3	1.5W	20	147	3	0.12
170624	10:16:51.44	44°46.20'	111°01.60'	6.9	0.8	13	146	2	0.12
170624	10:37:50.29	44°46.66'	111°01.96'	8.3	0.5	15	140	3	0.14
170624	10:52:36.35	44°46.74'	111°02.52'	7.3	0.3	13	139	4	0.10
170624	11:11:13.64	44°44.39'	111°02.26'	1.8	0.4	6	210	3	0.03
170624	11:11:17.60	44°45.97'	111°00.30'	6.8	0.3	8	234	1	0.09
170624	12:34:20.58	44°46.86'	111°00.87'	7.8	0.3	12	145	2	0.13
170624	14:00:17.93	44°47.35'	111°02.81'	6.5	0.6	11	162	5	0.12
170624	14:36:31.90	44°47.19'	111°01.12'	10.2	2.6W	24	116	3	0.13
170624	14:40:47.60	44°46.58'	111°00.85'	8.0	0.6	16	142	2	0.12
170624	15:09:13.47	44°47.34'	111°07.33'	8.8	0.5	10	92	1	0.10
170624	15:55:04.04	44°46.95'	111°01.34'	8.8	2.3W	23	146	3	0.16
170624	15:55:29.32	44°47.28'	111°01.15'	7.8	0.6	11	150	3	0.16
170624	15:55:51.14	44°47.19'	111°01.29'	8.5	1.6W	15	149	3	0.11
170624	16:05:56.62	44°46.98'	111°01.09'	8.2	0.5	16	146	3	0.17
170624	17:14:52.32	44°48.00'	111°01.49'	4.2	0.9	15	160	5	0.14
170624	17:15:48.20	44°46.88'	111°00.85'	6.9	0.4	16	145	3	0.15
170624	17:50:04.21	44°47.64'	111°02.07'	6.7	0.8	16	153	4	0.14
170624	19:00:44.03	44°46.90'	111°00.33'	5.3	0.4	11	199	2	0.08
170624	19:59:22.24	44°46.47'	111°00.92'	7.7	0.5	14	154	2	0.11
170624	20:08:45.44	44°46.72'	111°01.87'	6.8	0.5	11	141	3	0.13
170624	20:22:52.31	44°45.76'	110°58.99'	4.8	0.2	10	175	2	0.08
170624	20:25:53.48	44°47.12'	111°01.13'	7.9	1.8W	15	148	3	0.10
170624	21:01:05.27	44°47.07'	111°01.10'	8.2	0.9	17	148	3	0.12
170624	21:07:21.78	44°46.55'	111°00.69'	7.4	0.5	11	242	2	0.14
170624	21:12:04.20	44°47.31'	111°03.71'	5.7	0.4	9	180	4	0.20
170624	21:15:18.53	44°46.28'	111°04.31'	4.1	0.3	7	148	4	0.08
170624	21:31:34.95	44°47.64'	111°07.32'	9.6	0.4	11	116	1	0.12
170624	22:27:29.25	44°46.27'	111°01.04'	6.0	-0.1	8	192	2	0.10
170624	22:27:55.80	44°46.15'	111°00.44'	7.4	0.5	12	149	1	0.12
170624	22:38:16.64	44°46.95'	111°00.92'	7.6	0.9	18	147	3	0.13
170624	23:31:04.87	44°46.93'	111°01.53'	8.0	1.6W	11	145	3	0.10
170625	00:55:48.25	44°47.81'	111°01.07'	9.7	0.4	7	228	4	0.03
170625	02:12:01.91	44°46.38'	111°02.22'	6.2	0.3	6	185	3	0.07

Table 2. Earthquakes in the Yellowstone Region: April 1–June 30, 2017

DATE	ORIGIN TIME	LATITUDE	LONGITUDE	DEPTH	MAG	NO	GAP	DMN	RMS
170625	03:29:41.00	44°47.04'	111°01.27'	8.2	0.9	19	146	3	0.16
170625	03:32:53.67	44°46.20'	111°00.38'	7.0	0.5	14	149	1	0.11
170625	03:41:21.63	44°46.84'	111°01.12'	8.2	2.3W	21	144	3	0.14
170625	03:48:55.57	44°46.62'	111°02.37'	7.6	0.8	20	139	3	0.14
170625	04:06:10.96	44°46.98'	111°01.53'	0.8	1.3W	12	145	3	0.15
170625	05:27:16.77	44°47.23'	111°02.08'	8.7	0.7	16	147	4	0.10
170625	05:39:56.46	44°46.68'	111°01.12'	6.8	0.2	10	142	2	0.09
170625	05:40:09.33	44°46.98'	111°01.01'	7.6	1.3W	17	147	3	0.12
170625	05:59:09.51	44°47.16'	111°01.60'	8.1	1.1W	18	147	3	0.09
170625	06:06:26.19	44°47.13'	111°00.70'	7.9	0.9	19	149	3	0.10
170625	06:10:41.47	44°46.77'	111°01.12'	7.8	0.2	16	143	2	0.09
170625	07:46:41.45	44°47.34'	111°01.83'	7.2	0.6	12	150	4	0.09
170625	08:23:29.32	44°47.15'	111°01.43'	8.3	0.8	17	148	3	0.11
170625	09:27:23.88	44°46.88'	111°01.40'	8.0	0.7	16	144	3	0.13
170625	09:34:22.87	44°46.94'	111°00.78'	8.6	-0.1	7	147	3	0.04
170625	10:17:01.66	44°47.08'	111°01.55'	7.9	0.8	17	147	3	0.10
170625	12:12:06.60	44°46.55'	111°01.40'	8.2	0.8	14	159	2	0.10
170625	12:44:59.35	44°46.63'	111°01.66'	5.8	0.0	10	140	3	0.14
170625	12:45:11.47	44°46.83'	111°01.59'	7.3	1.3W	18	143	3	0.15
170625	12:48:47.22	44°46.83'	111°01.70'	7.6	0.3	14	143	3	0.11
170625	13:08:14.10	44°45.49'	111°02.79'	6.6	-0.4	7	168	3	0.10
170625	18:19:54.66	44°47.29'	111°02.27'	6.3	0.5	8	221	4	0.13
170625	18:36:20.23	44°46.43'	111°03.93'	4.0	0.6	8	160	4	0.11
170625	18:53:45.14	44°47.77'	111°01.20'	8.4	0.4	9	226	4	0.11
170625	20:22:43.06	44°48.09'	111°01.72'	3.8	0.6	9	224	5	0.13
170625	22:39:01.27	44°46.59'	111°02.10'	8.0	1.3	13	152	3	0.14
170626	00:53:26.48	44°47.08'	111°02.50'	7.8	0.6	14	144	4	0.12
170626	03:27:47.86	44°48.08'	110°59.75'	4.1	0.5	14	166	5	0.10
170626	03:57:15.37	44°47.78'	111°01.12'	4.5	0.6	13	157	4	0.14
170626	05:27:08.77	44°45.57'	111°04.39'	5.7	-0.2	7	181	5	0.10
170626	06:32:55.54	44°43.69'	111°13.59'	5.0	0.8	11	99	2	0.19
170626	11:51:23.43	44°47.45'	111°01.87'	8.0	0.8	15	151	4	0.11
170626	12:27:28.43	44°46.87'	111°02.39'	8.2	1.1	16	141	4	0.10
170626	13:35:45.99	44°46.97'	111°00.79'	7.4	0.6	14	147	3	0.14
170626	14:17:13.25	44°47.52'	111°00.93'	5.0	1.4W	18	173	4	0.16
170626	15:06:20.89	44°47.78'	111°00.77'	5.3	0.4	5	158	4	0.13
170626	15:06:40.82	44°46.87'	111°02.31'	6.2	1.1	16	141	4	0.14
170626	15:35:47.61	44°47.68'	111°02.04'	8.1	0.8	13	154	5	0.11
170626	17:01:46.36	44°48.14'	111°02.74'	7.6	1.4W	21	158	5	0.09
170626	17:02:45.41	44°47.82'	111°02.71'	7.8	1.0	13	154	5	0.09
170626	18:28:05.17	44°47.52'	111°02.25'	7.4	1.0	17	151	4	0.11
170626	19:20:40.36	44°46.34'	111°00.94'	6.8	0.5	16	138	2	0.12
170626	19:25:18.74	44°46.23'	111°01.40'	5.5	0.7	11	192	2	0.17
170626	19:25:51.39	44°46.03'	111°01.16'	5.6	1.0	10	189	1	0.14
170626	19:32:37.86	44°45.83'	110°59.38'	3.8	0.9	14	144	1	0.16

Table 2. Earthquakes in the Yellowstone Region: April 1–June 30, 2017

DATE	ORIGIN TIME	LATITUDE	LONGITUDE	DEPTH	MAG	NO	GAP	DMN	RMS
170626	21:09:41.05	44°44.48'	110°56.77'	10.5	0.8	13	111	5	0.13
170626	22:35:10.95	44°48.22'	111°01.25'	7.4	2.7W	26	125	5	0.15
170626	23:25:44.86	44°46.73'	111°02.18'	7.8	1.0	16	140	3	0.11
170627	01:05:43.43	44°47.31'	111°01.95'	6.3	0.9	16	149	4	0.12
170627	01:14:52.39	44°47.29'	111°00.09'	4.1	1.1	14	153	3	0.14
170627	01:54:28.22	44°46.54'	111°01.27'	7.7	0.9	9	185	2	0.14
170627	01:55:20.34	44°46.69'	111°01.06'	7.2	0.5	10	143	2	0.09
170627	03:23:59.15	44°48.18'	111°02.76'	7.7	0.8	13	158	5	0.07
170627	03:35:44.38	44°47.34'	111°01.81'	8.3	1.0	13	150	4	0.09
170627	03:56:24.91	44°46.89'	111°01.71'	7.1	0.9	17	143	3	0.15
170627	05:16:54.28	44°47.28'	111°00.03'	4.2	1.5W	17	153	3	0.16
170627	05:34:32.02	44°46.97'	111°01.19'	7.7	1.5W	18	146	3	0.15
170627	05:34:49.19	44°47.48'	111°00.90'	7.2	0.7	10	154	4	0.18
170627	05:36:05.31	44°46.51'	111°02.26'	7.0	0.4	13	137	3	0.08
170627	06:11:00.32	44°46.46'	111°01.29'	6.6	-0.3	7	145	2	0.09
170627	06:49:33.58	44°14.26'	110°47.05'	4.2	1.0	12	110	4	0.15
170627	06:57:08.03	44°47.49'	111°01.69'	7.9	0.7	17	152	4	0.14
170627	07:00:30.60	44°14.36'	110°47.03'	3.3	0.7	10	110	4	0.21
170627	07:04:25.63	44°46.53'	111°01.63'	5.6	-0.6	8	148	2	0.08
170627	07:15:04.03	44°47.53'	111°02.30'	7.3	1.3W	19	151	4	0.13
170627	09:08:57.60	44°47.44'	111°01.88'	7.7	0.4	12	150	4	0.11
170627	09:31:15.20	44°46.77'	111°02.88'	7.2	0.8	13	139	4	0.13
170627	10:30:39.68	44°46.98'	111°01.08'	6.8	0.8	17	114	3	0.14
170627	11:04:52.31	44°47.06'	111°01.32'	6.9	0.4	8	193	3	0.10
170627	17:16:47.82	44°47.20'	111°01.68'	7.4	0.7	13	148	3	0.12
170627	17:19:54.74	44°46.52'	111°01.32'	6.1	0.8	9	184	2	0.10
170627	17:41:09.97	44°47.58'	111°01.97'	9.3	1.5W	16	152	4	0.11
170627	17:46:37.49	44°47.34'	111°01.65'	7.8	0.4	11	150	4	0.13
170627	18:20:57.05	44°44.31'	111°13.83'	10.1	0.6	7	119	3	0.08
170627	20:37:33.92	44°47.18'	111°01.85'	7.9	0.5	9	148	4	0.08
170627	20:39:56.87	44°47.96'	111°01.41'	5.1	0.4	14	160	5	0.14
170628	03:37:25.42	44°46.80'	111°01.72'	7.9	0.8	12	143	3	0.10
170628	03:41:38.04	44°47.12'	111°01.09'	8.2	1.0W	14	148	3	0.12
170628	03:41:43.54	44°46.96'	111°01.20'	7.9	1.5W	15	146	3	0.15
170628	05:15:18.51	44°46.48'	110°46.89'	7.1	1.1W	22	181	6	0.15
170628	06:47:21.31	44°47.76'	111°07.13'	10.6	0.9	18	112	1	0.13
170628	06:51:01.25	44°47.34'	111°07.22'	9.3	0.3	14	90	1	0.12
170628	08:20:18.14	44°19.62'	110°32.18'	3.6	1.0	15	184	7	0.28
170628	08:20:47.13	44°44.87'	111°00.78'	2.2	0.0	8	126	1	0.04
170628	08:21:35.97	44°18.96'	110°32.55'	3.1	1.7	15	139	8	0.17
170628	08:22:07.86	44°19.65'	110°32.30'	1.9	1.3	14	103	7	0.19
170628	09:25:54.45	44°44.03'	111°00.96'	1.5	0.1	6	169	3	0.06
170628	09:26:11.05	44°19.12'	110°31.72'	1.1	1.8	9	141	8	0.26
170628	10:45:02.60	44°44.12'	110°48.02'	7.1	0.5	12	135	7	0.16
170628	10:52:55.52	44°46.14'	111°00.97'	7.1	1.1	10	239	1	0.16

Table 2. Earthquakes in the Yellowstone Region: April 1–June 30, 2017

DATE	ORIGIN TIME	LATITUDE	LONGITUDE	DEPTH	MAG	NO	GAP	DMN	RMS
170628	11:45:33.60	44°47.16'	111°01.51'	7.6	0.4	14	147	3	0.15
170628	12:49:04.02	44°46.80'	111°01.48'	7.6	0.3	12	143	3	0.12
170628	12:54:34.89	44°46.07'	111°00.79'	6.6	0.4	6	145	1	0.03
170628	13:06:31.57	44°46.62'	111°02.14'	7.0	1.0	18	139	3	0.13
170628	13:22:29.74	44°46.88'	111°00.99'	7.9	0.7	12	145	3	0.12
170628	13:54:21.45	44°44.68'	110°48.10'	8.4	1.0	14	142	6	0.14
170628	14:01:24.52	44°47.00'	111°00.85'	8.1	1.7W	14	147	3	0.12
170628	14:15:51.94	44°46.74'	111°00.67'	7.2	0.5	11	144	2	0.12
170628	15:48:50.19	44°47.00'	110°59.76'	5.6	0.8	12	150	3	0.17
170628	16:22:17.02	44°47.38'	111°01.99'	7.8	0.4	13	150	4	0.13
170628	17:34:03.40	44°47.16'	111°02.08'	8.8	1.2	19	70	4	0.18
170628	17:34:46.52	44°46.34'	111°02.17'	7.5	0.3	11	136	3	0.13
170628	17:41:03.79	44°46.78'	111°02.54'	8.2	1.6W	23	140	4	0.15
170628	19:49:59.52	44°45.76'	111°02.72'	6.7	1.0	12	175	3	0.16
170629	01:55:41.01	44°46.35'	111°02.09'	7.2	0.6	15	136	3	0.15
170629	02:32:07.43	44°47.26'	111°02.38'	9.7	2.0W	22	70	4	0.12
170629	02:33:39.47	44°46.90'	111°02.46'	8.9	2.0W	24	113	4	0.14
170629	03:13:44.12	44°46.76'	111°02.08'	7.0	0.7	21	140	3	0.18
170629	03:20:49.95	44°46.84'	111°02.58'	8.4	2.0W	23	140	4	0.15
170629	03:26:17.02	44°47.08'	111°02.30'	9.3	2.1W	24	115	4	0.13
170629	03:27:33.85	44°46.79'	111°01.81'	7.8	1.0	19	142	3	0.13
170629	03:34:05.32	44°46.90'	111°02.21'	8.6	1.7W	22	143	3	0.16
170629	03:40:20.23	44°21.07'	110°40.99'	2.9*	1.3	9	145	12	0.12
170629	03:54:31.10	44°46.40'	111°01.87'	6.7	0.7	10	149	3	0.13
170629	04:02:54.29	44°46.88'	111°01.68'	7.1	1.6W	20	143	3	0.15
170629	04:03:15.65	44°46.33'	111°01.68'	7.2	0.9	19	136	2	0.13
170629	04:03:53.95	44°46.44'	111°01.36'	4.6	1.5W	14	138	2	0.21
170629	04:05:01.63	44°46.45'	111°01.71'	7.7	0.5	12	138	2	0.14
170629	04:08:45.57	44°46.67'	111°01.77'	8.8	1.4W	19	141	3	0.16
170629	04:13:07.33	44°46.96'	111°01.63'	6.5	1.1W	21	145	3	0.18
170629	04:16:38.24	44°46.96'	111°01.83'	8.0	0.9W	15	144	3	0.16
170629	04:18:09.40	44°46.81'	111°01.77'	9.2	1.5W	20	143	3	0.17
170629	04:21:56.86	44°47.76'	110°59.86'	4.3	1.5W	20	161	4	0.17
170629	05:07:04.53	44°21.14'	110°40.70'	2.9	0.6	7	170	9	0.14
170629	05:07:19.66	44°46.00'	111°02.89'	7.1	0.6W	12	164	3	0.19
170629	05:26:45.46	44°47.67'	111°01.61'	8.1	0.6	20	155	4	0.16
170629	06:24:59.55	44°47.92'	111°01.90'	8.7	0.8	16	158	5	0.09
170629	06:28:12.02	44°46.95'	111°01.89'	8.1	0.6	14	144	3	0.16
170629	07:29:33.29	44°47.16'	111°00.88'	6.8	0.5	18	149	3	0.17
170629	07:44:34.25	44°47.53'	111°01.24'	10.0	2.0W	23	69	4	0.16
170629	08:11:18.44	44°44.94'	111°04.86'	2.5	-0.2	8	191	6	0.06
170629	12:45:10.39	44°46.81'	110°59.72'	5.5	0.8	12	147	2	0.13
170629	13:24:35.49	44°47.15'	111°02.48'	9.2	0.7	12	145	4	0.15
170629	17:33:48.07	44°45.89'	111°03.03'	8.0	0.5	11	127	4	0.19
170629	18:43:37.80	44°46.62'	111°01.89'	5.9	0.3	9	189	3	0.18

Table 2. Earthquakes in the Yellowstone Region: April 1–June 30, 2017

DATE	ORIGIN TIME	LATITUDE	LONGITUDE	DEPTH	MAG	NO	GAP	DMN	RMS
170629	19:13:47.38	44°47.76'	111°02.61'	7.7	0.3	11	154	5	0.08
170629	20:26:18.53	44°46.09'	111°01.65'	6.8	0.8	8	182	2	0.12
170629	20:39:51.49	44°47.37'	111°02.01'	7.9	0.4	12	149	4	0.13
170629	20:40:02.32	44°47.03'	111°01.88'	7.9	0.2	8	145	3	0.12
170629	21:14:52.31	44°44.48'	111°04.92'	5.3	0.3	9	139	6	0.12
170630	00:01:41.95	44°46.81'	111°02.32'	7.7	0.2	9	187	3	0.14
170630	03:37:04.72	44°47.00'	111°01.17'	7.8	1.3W	20	146	3	0.14
170630	04:06:20.68	44°47.57'	111°03.03'	8.8	2.1W	27	149	4	0.14
170630	04:37:10.53	44°47.01'	111°01.87'	6.5	0.8	17	162	3	0.18
170630	07:30:06.03	44°47.02'	111°01.04'	7.5	0.8	20	147	3	0.15
170630	08:58:15.12	44°46.99'	111°00.42'	6.0	1.2W	24	148	3	0.15
170630	13:06:45.21	44°44.56'	110°59.83'	3.3	0.5	9	145	2	0.08
170630	13:11:28.97	44°20.06'	110°32.29'	6.3	0.6	18	101	7	0.16
170630	14:59:24.82	44°46.90'	111°01.23'	7.2	0.3	12	145	3	0.09
170630	15:33:12.94	44°48.02'	111°02.18'	8.6	0.9	14	207	5	0.10
170630	15:33:28.97	44°46.91'	111°01.32'	7.8	0.9W	10	144	3	0.11
170630	16:17:01.18	44°47.87'	111°00.97'	7.8	0.4	10	211	4	0.09
170630	16:27:18.77	44°47.73'	111°00.70'	7.0	0.2	10	211	4	0.12
170630	17:18:00.26	44°47.66'	111°04.22'	6.6	0.8	9	181	6	0.09
170630	18:04:53.77	44°46.14'	111°00.34'	7.0	0.3	8	189	1	0.06
170630	18:06:36.11	44°19.95'	110°32.28'	5.7	1.2W	14	102	8	0.10
170630	20:57:59.44	44°46.08'	111°00.33'	7.0	0.5	7	236	1	0.10
170630	23:35:58.16	44°46.62'	111°02.51'	7.4	0.6	10	138	3	0.08

number of earthquakes = 1,328

* indicates poor depth control

W indicates Wood-Anderson data used for magnitude calculation

Table 3
UNIVERSITY OF UTAH YELLOWSTONE SEISMIC NETWORK
Operating Seismograph Stations
June 30, 2017

UURSN	Location	SEED	SEED	No. of	Network	Latitude	Longitude	Elevation	Sensor	Digitizer	Telemetry	Sponsor
Code		Station	Channel	Channels	Code			(meters)				
B206*	Canyon206bwy2008, Yellowstone, WY	B206	EH[ZEN]	3	PB	44° 46.66'	110° 30.70'	2400	IEESE-S2	Q330	Digital	PBO
B207*	Madisn207bwy2007, Yellowstone, WY	B207	EH[ZEN]	3	PB	44° 37.14'	110° 50.91'	2182	IEESE-S2	Q330	Digital	PBO
B208*	Lakejn208bwy2008, Yellowstone, WY	B208	EH[ZEN]	3	PB	44° 33.61'	110° 24.09'	2406	IEESE-S2	Q330	Digital	PBO
B944*	Grantt944bwy2008, Yellowstone, WY	B944	EH[ZEN]	3	PB	44° 23.38'	110° 32.63'	2365	IEESE-S2	Q330	Digital	PBO
B945*	Pantr944swy2008, Yellowstone, WY	B945	EH[ZEN]	3	PB	44° 53.64'	110° 44.65'	2249	IEESE-S2	Q330	Digital	PBO
B950*	Norris950bwy2013, Yellowstone, WY	B950	EH[ZEN]	3	PB	44° 42.77'	110° 40.71'	2328	IEESE-S2	Q330	Digital	PBO
FLWY*	Flagg Ranch, WY	FLWY	BH[ZEN]	3	IW	44° 04.96'	110° 41.96'	2078	3ESP	RT-130	Digital	ANSS
H17A*	Grant Junction, Yellowstone, WY	H17A	BH[ZEN]	3	TA	44° 24.00'	110° 34.80'	2400	STS-2	Q330	Digital	NSF
IMW	Indian Meadows, WY	IMW	BH[ZEN]	3	IW	43° 53.58'	110° 56.58'	2670	3ESP	RT-130	Digital	ANSS
LKW*	Lake, WY	LKWY	BH[ZEN]	3	US	44° 33.91'	110° 24.00'	2424	STS-2	Q330	Digital	USGS
LOHW*	National Elk Refuge, WY	LOHW	BH[ZEN]	3	IW	43° 36.76'	110° 36.30'	2245	3ESP	RT-130	Digital	ANSS
MCID	Moose Creek, ID	MCID	EHZ	1	WY	44° 11.45'	111° 11.03'	2137	L4C	PSN	Analog	USGS
MOOW*	Moose Ponds, WY	MOOW	BH[ZEN]	3	IW	43° 44.92'	110° 44.69'	2128	3ESP	RT-130	Digital	ANSS
QLMZ*	Earthquake Lake, MT	QLMT	EHZ	1	MB	44° 49.84'	111° 25.80'	2064	L4C	-	Analog	MBMT
REDW*	Red-Top Meadows, WY	REDW	BH[ZEN]	3	IW	43° 21.74'	110° 51.18'	2322	3ESP	RT-130	Digital	ANSS
SNOW*	Snow King Mountain, WY	SNOW	BH[ZEN]	3	IW	43° 27.75'	110° 45.31'	2390	3ESP	RT-130	Digital	ANSS
TPAW*	Teton Pass, WY	TPAW	BH[ZEN]	3	IW	43° 29.41'	110° 57.04'	2512	3ESP	RT-130	Digital	ANSS
TPMZ*	Teepe Creek, MT	TPMT	EHZ	1	MB	44° 43.79'	111° 39.94'	2518	L4C	-	Analog	MBMT
YDC	Denny Creek, MT	YDC	EHZ	1	WY	44° 42.51'	111° 14.60'	2025	L4C	PSN	Analog	USGS
YEE	East Entrance (YNP), WY	YEE	HH[ZEN]	3	WY	44° 29.12'	109° 53.81'	2270	Compact	Taurus	Digital	USGS
YFT	Old Faithful (YNP), WY	YFT	HH[ZEN]	3	WY	44° 27.05'	110° 50.24'	2292	Compact	Taurus	Digital	USGS
			EN[ZEN]	3					Titan			
YGC	Grayling Creek, MT	YGC	EHZ	1	WY	44° 47.77'	111° 06.45'	2075	L4C	PSN	Analog	USGS
YHB	Horse Butte, MT	YHB	EHZ	1	WY	44° 45.07'	111° 11.71'	2157	L4C	ANSS-130	Digital	USGS
			HH[ZEN]	3					40T			
			EN[ZEN]	3					Titan			
YHH	Holmes Hill (YNP), WY	YHH	EHZ	1	WY	44° 47.30'	110° 51.03'	2717	S13	PSN	Analog	USGS
			HH[ZEN]	3					Trillium 120			
			EN[ZEN]	3					Titan			

UURSN	Location	SEED	SEED	No. of	Network	Latitude	Longitude	Elevation	Sensor	Digitizer	Telemetry	Sponsor
Code		Station	Channel	Channels	Code			(meters)				
YHL	Hebgen Lake, MT	YHL	HH[ZEN]	3	WY	44° 51.05'	111° 10.98'	2691	Trillium 120	Q330	Digital	USGS
			EN[ZEN]	3					Titan			
YHR	Hawk's Rest, WY	YHR	HH[ZEN]	3	WY	44° 06.36'	110° 04.90'	2976	Trillium 120	Q330	Digital	USGS
YJCZ	Joseph's Coat (YNP), WY	YJC	EH[ZEN]	3	WY	44° 45.33'	110° 20.95'	2684	S13	PSN	Analog	USGS
YLAZ	Lake Butte (YNP), WY	YLA	EHZ	1	WY	44° 30.76'	110° 16.12'	2580	L4C	PSN	Analog	USGS
YLT	Little Thumb Creek (YNP), WY	YLT	EHZ	1	WY	44° 26.25'	110° 35.28'	2439	L4C	PSN	Analog	USGS
YMC	Maple Creek (YNP), WY	YMC	EH[ZEN]	3	WY	44° 45.53'	111° 00.41'	2073	S13	PSN	Analog	USGS
YML	Mary Lake (YNP), WY	YML	EH[ZEN]	3	WY	44° 36.20'	110° 38.63'	2653	L4C	PSN	Analog	USGS
YMP	Mirror Plateau (YNP), WY	YMP	EHZ	1	WY	44° 44.38'	110° 09.40'	2774	S13	PSN	Analog	USGS
			HH[ZEN]	3					Trillium 120			
			EN[ZEN]	3					Titan			
YMR	Madison River (YNP), WY	YMR	HH[ZEN]	3	WY	44° 40.12'	110° 57.90'	2149	Trillium 120	Q330	Digital	USGS
			EN[ZEN]	3					Titan			
YMS	Mount Sheridan (YNP), WY	YMS	EHZ	1	WY	44° 15.84'	110° 31.67'	3106	L4C	PSN	Analog	USGS
YMV	Mammoth Vault (YNP), WY	YMV	EHZ	1	WY	44° 58.42'	110° 41.33'	1829	L4C	PSN	Analog	USGS
YNE	Northeast Entrance (YNP), WY	YNE	HH[ZEN]	3	WY	45° 00.46'	110° 00.48'	2343	Compact	ANSS-130	Digital	USGS
YNM	Norris Museum (YNP), WY	YNM	HH[ZEN]	3	WY	44° 43.59'	110° 42.22'	2311	Trillium 240	Q330	Digital	USGS
YNR	Norris Junction (YNP), WY	YNR	HH[ZEN]	3	WY	44° 42.93'	110° 40.75'	2336	Trillium 120	Q330	Digital	USGS
			EN[ZEN]	3					Titan			
YPC	Pelican Cone (YNP), WY	YPC	EHZ	1	WY	44° 38.88'	110° 11.55'	2932	L4C	PSN	Analog	USGS
YPK	Parker Peak (YNP), WY	YPK	EH[ZEN]	3	WY	44° 43.91'	109° 55.32'	2897	L4C	PSN	Analog	USGS
YPM	Purple Mountain (YNP), WY	YPM	EHZ	1	WY	44° 39.43'	110° 52.12'	2582	L4C	PSN	Analog	USGS
YPP	Pitchstone Plateau (YNP), WY	YPP	EHZ	1	WY	44° 16.26'	110° 48.27'	2707	S13	PSN	Analog	USGS
			HH[ZEN]	3					Trillium 120			
			EN[ZEN]	3					Titan			
YSB	Soda Butte (YNP), WY	YSB	EHZ	1	WY	44° 53.04'	110° 09.06'	2072	L4C	PSN	Analog	USGS
YTP	The Promontory (YNP), WY	YTP	EHZ	1	WY	44° 23.51'	110° 17.10'	2384	L4	PSN	Analog	USGS
			HH[ZEN]	3					Trillium 120			
			EN[ZEN]	3					Titan			
YUF	Upper Falls (YNP), WY	YUF	HH[ZEN]	3	WY	44° 42.76'	110° 30.71'	2394	Compact	ANSS-130	Digital	USGS
			EN[ZEN]	3					Titan			
YWB	West Boundary (YNP), WY	YWB	EHZ	1	WY	44° 36.35'	111° 06.05'	2310	L4C	PSN	Analog	USGS

* Station operated by another agency and recorded as part of the Yellowstone Seismic Network
Network Statistics: 147 data channels from 46 stations were being recorded at the end of this report period

EXPLANATION OF TABLE

UURSN Code: Station code formerly used in routine processing. Owing to software limitations, the station code may not be the same code used by the original operator. For multi-component stations, the vertical, east-west, and north-south high gain (low gain) components are identified by an appended Z(V), E(L), and N(M), respectively, in UUSS phase files.

Location: General description of station location. YNP = Yellowstone National Park.

SEED Station: The SEED (Standard for the Exchange of Earthquake Data) station code used by the original operator.

SEED Channel: The SEED format uses three letters to name seismic channels. See <<http://www.iris.edu/manuals/SEEDManual_V2.4.pdf>> for information about the SEED channel naming convention. Relevant sections are reproduced below. In the SEED convention, each letter describes one aspect of the instrumentation and its digitization. The first letter specifies the general sampling rate and the response band of the instrument. Band codes used in this table include:

Band Code	Band Type	Sample Rate	Corner Period
E	Extremely short period	≥ 80 Hertz	< 10 seconds
H	High broadband	≥ 80 Hertz	≥ 10 seconds
B	Broadband	≥ 10 to < 80 Hertz	≥ 10 seconds
S	Short period	≥ 10 to < 80 Hertz	< 10 seconds

The second letter specifies the family to which the sensor belongs. Sensor families used in this table are:

Instrument Code	Description
H	High gain seismometer
L	Low gain seismometer
N	Accelerometer

The third letter specifies the physical configuration of the members of a multiple axis instrument package. Channel orientations used in this table are:

Z E N Traditional (Vertical, East-West, North-South)

Number of Channels: Total number of waveform channels recorded.

Network Code: The FDSN (Federation of Digital Seismographic Networks) registered network code. See <<http://www.iris.edu/dms/nodes/dmc/services/network_codes>> for information about registered seismograph network codes. Network codes referenced in this table:

Network Code	Network name; Network operator or responsible organization
IE	Idaho National Laboratory Seismic Network
IU	IRIS/USGS Network; USGS Albuquerque Seismological Laboratory
IW	Intermountain West Network, U.S. Geological Survey

MB	Montana Regional Seismic Network; Montana Bureau of Mines and Geology
PB	Plate Boundary Observatory
UU	University of Utah Regional Network; University of Utah
US	US National Network; USGS National Earthquake Information Center
WY	Yellowstone Wyoming Seismic Network; University of Utah

Latitude, Longitude: Sensor location in degrees and decimal minutes; North latitude, West longitude.

Elevation: Sensor altitude in meters above sea level.

Sensor	Description
L4, L4C	Mark Products L4 or L4C short-period seismometer
S13, 18300	Geotech S13 or 18300 short-period seismometer
Ranger	Kinometrics Ranger short-period seismometer
40T	Guralp CMG-40T broadband seismometer
3T	Guralp CMG-3T broadband seismometer
3ESP	Guralp CMG-3ESP broadband seismometer
STS-2	Streckheisen STS-2 broadband seismometer
FBA23	Kinometrics FBA-23 accelerometer
EpiSensor	Kinometrics EpiSensor accelerometer
Applied Mems	Applied Mems accelerometer
PA-23	Geotech PA-23 accelerometer
Compact	Nanometrics Compact broadband seismometer
Trillium 120	Nanometrics Trillium 120 broadband seismometer
Trillium 240	Nanometrics Trillium 240 broadband seismometer
Titan	Nanometrics Titan accelerometer
Observer	Refraction Technology (REF TEK) Model 151 Observer broadband seismometer
IESE-S2	Institute of Earth Science and Engineering S-2 model borehole seismometer

Digitizer	Description
K2	Kinometrics Altus Series K2 (19-bit resolution field digitizer)
Etna	Kinometrics Altus Series Etna (18-bit resolution field digitizer)
72A-07	Refraction Technology (REF TEK) model 72A-07 (24-bit field digitizer)
72A-08	Refraction Technology (REF TEK) model 72A-08 (24-bit field digitizer)
ANSS-130	Refraction Technology (REF TEK) model 130-ANSS/02 (24-bit resolution field digitizer)
RT-130	Refraction Technology (REF TEK) model RT-130 (24-bit resolution field digitizer)
Q330	Quanterra, Inc Q330 digitizer (24-bit resolution field digitizer)
SMART-24	Geotech SMART-24 digitizer (24-bit resolution field digitizer)
PSN	PSN-ADC-SERIAL version III (16-bit resolution field digitizer)
Basalt	Kinometrics Basalt (24-bit resolution field digitizer)
Taurus	Nanometrics Taurus (24-bit resolution field digitizer)

Telemetry	Description
Analog	Data transmission is analog along part of the transmission pathway

Digital Data are converted to digital form at the station site
None On-site recording system

Sponsor (or Operator for stations marked by * in preceding columns)

USGS U.S. Geological Survey
Utah State of Utah
ANSS Advanced National Seismic System
INL Idaho National Laboratory
MBMT Montana Bureau of Mines and Geology
PBO Plate Boundary Observatory
NSF National Science Foundation

Network Changes During April 1–June 30, 2017

None