

EARTHQUAKE ACTIVITY IN THE UTAH REGION

Preliminary Epicenters

July 1 – September 30, 2011

Prepared by the University of Utah Seismograph Stations and funded by
the U.S. Geological Survey (Cooperative Agreement No. G10AC00085) and
by the State of Utah

December 1, 2011

Foreword and Data Explanation

This report contains an epicenter map (Figure 1) and listings of earthquakes (Tables 1 and 2) detected and located in the Utah region (lat. 36° 45' – 42° 30' N, long. 108° 45' – 114° 15' W). The computer program HYPOINVERSE (F. W. Klein, 1978, U.S. Geological Survey Open-File Report 78-694) was used to process the earthquake data. This report also includes maps and a table of operating seismograph stations in the University of Utah's regional/urban seismic network (Figures 2 and 3, Table 3).

The earthquake listing in Table 2 is estimated to be systematically complete above magnitude 1.5 in north-central Utah, above magnitude 2.0 in central and southwestern Utah, and above magnitude 3.0 in southeastern Utah and the eastern Uinta Basin. *These data are preliminary—both the locations and magnitudes are subject to revision. The catalog may include some man-made seismic events not yet identified.*

The following data are listed for each earthquake in Table 2:

- Date (yymmdd) and origin time in Universal Coordinated Time (UTC). To convert to local time, subtract seven hours for Mountain Standard Time (MST) and six hours for Mountain Daylight Time (MDT). During the report period, local time was MDT.
- Earthquake location coordinates in degrees and minutes of north latitude and west longitude, and depth in kilometers.
- "*" indicates poor depth resolution: no recording stations within 10 km or twice the depth.
- MAG, the computed Richter local magnitude (M_L) for each earthquake. "W" indicates peak amplitude measurements from Wood-Anderson records were used. Otherwise, the estimate is calculated from signal durations and is more correctly identified as coda magnitude (M_C). The notation "--" indicates that a reliable magnitude estimate could not be made.
- NO, the number of P and S readings used in the solution.
- GAP, the largest azimuthal separation in degrees between recording stations used in the solution.
- DMN, the epicentral distance in kilometers to the closest station.
- RMS, the root-mean-square of the travel-time residuals in seconds:

$$RMS = \left(\frac{\sum_i (W_i R_i)^2}{\sum_i (W_i)^2} \right)^{\frac{1}{2}}$$

where: R_i is the observed minus the computed arrival time for the i -th P or S reading, and W_i is the relative weight given to the i -th P or S arrival time (0.0 for no weight through 1.0 for full weight).

EARTHQUAKE ACTIVITY IN THE UTAH REGION July 1 – September 30, 2011

by R. Burlacu, P. M. Roberson, J. M. Hale, and C. Volk
with contributions by
K. D. Koper, J. C. Pechmann, and K. L. Pankow

University of Utah Seismograph Stations
115 South 1460 East, Room 107 FASB
Salt Lake City, UT 84112-0102
Tele: (801) 581-6274 FAX: (801) 585-5585
email: burlacu@seis.utah.edu
URL: <http://www.seis.utah.edu> (aka quake.utah.edu)

During the three-month period July 1 through September 30, 2011, the University of Utah Seismograph Stations (UUSS) located 330 earthquakes within the Utah region (Figure 1). The total includes six earthquakes in the magnitude 3 range and 28 earthquakes in the magnitude 2 range. Earthquakes of magnitude 3.0 or larger (plotted as stars and specifically labeled on Figure 1) are listed below. Seven earthquakes were reported felt during the report period (see Table 1, a cumulative tabulation of earthquakes during 2011 that were either felt in the Utah region or for which a ShakeMap was produced, or both). Additional information on earthquakes within the Utah region is available from the University of Utah Seismograph Stations.

Online Information

A complete copy of this report, including maps and the earthquake catalog, is available on the UUSS Web site at <http://www.quake.utah.edu/EOCENTER/QUARTERLY/quarterly.htm>.

ShakeMaps—computer maps of the ground shaking produced by an earthquake—are automatically produced by UUSS for earthquakes of magnitude 3 and larger within a 75-mile wide zone along the I-15 corridor and magnitude 3.5 and larger elsewhere in the Utah region (see http://www.seis.utah.edu/shake/shake_trigger_area_09.pdf.) These magnitude thresholds have changed with time as the network of strong-motion stations in the state has expanded. The ShakeMaps are accessible on the UUSS Web page at <http://www.seis.utah.edu/shake>. Earthquakes during 2011 for which ShakeMaps are available are indicated in Table 1.

For earthquakes of magnitude 3 and larger in the Utah region, the U. S. Geological Survey automatically posts a Community Internet Intensity Map (CIIM) on its "Did You Feel It?" Web page at <http://pasadena.wr.usgs.gov/shake/imw>. We urge anyone who feels an earthquake to report their observations on this interactive Web site; felt information is available by zip code on the CIIM site or can be obtained from UUSS directly.

Earthquakes of Magnitude 3.0 or Larger

| | | | |
|--------------------|--------------|-----------|---|
| M _L 3.2 | July 4 | 21:22 MDT | 4 mi SSW of Santaquin, UT (felt, CIIM intensity map, ShakeMap , see Table 1) |
| M _L 3.0 | July 5 | 08:59 MDT | 19 mi SSW of Panguitch, UT (felt, CIIM intensity map, ShakeMap , see Table 1) |
| M _L 3.3 | July 22 | 01:05 MDT | 4 mi SSW of Santaquin, UT (felt, CIIM intensity map, ShakeMap , see Table 1) |
| M _L 3.7 | July 25 | 21:38 MDT | 10 mi SW of Saint Charles, ID (ShakeMap , see Table 1) |
| M _L 3.0 | July 28 | 16:34 MDT | 15 mi W of Emery, UT |
| M _L 3.5 | September 28 | 00:31 MDT | 20 mi N of Tropic, UT (felt, CIIM intensity map, see Table 1) |

Other Notable Seismicity

During the report period, there were three notable spatial cluster of natural earthquake activity (labeled A-C in Figure 1). For reporting purposes, we define a cluster as ten or more earthquakes occurring within a 10-km (6-mile) radius during the report period.

- A. A cluster of 36 earthquakes ($0.3 \leq M \leq 1.6$) occurred about 17 miles WSW of Bear River City, UT. Sixteen of these events, including a magnitude 1.6 shock, occurred between July 24 and July 29.
- B. A cluster of 37 earthquakes ($0.7 \leq M \leq 3.3$) occurred about four miles S of Santaquin, UT. Eighteen of these events, including a magnitude 3.3 shock, occurred between July 14 and July 24.
- C. A cluster of 12 earthquakes ($0.9 \leq M \leq 3.5$) occurred about twenty miles N of Tropic, UT. Eleven of these events, including a magnitude 3.5 shock, occurred on September 28.

In Figure 1, the locally clustered seismic events within a radius of approximately 30 miles of Price, together with a localized cluster about 50 miles to its southwest, are associated with known areas of underground coal mining and are interpreted to be mining-related. These include a total of 103 located shocks ($-0.5 \leq M \leq 2.9$) that occurred throughout the report period.

Seismicity of the Utah Region July 1, 2011 - September 30, 2011

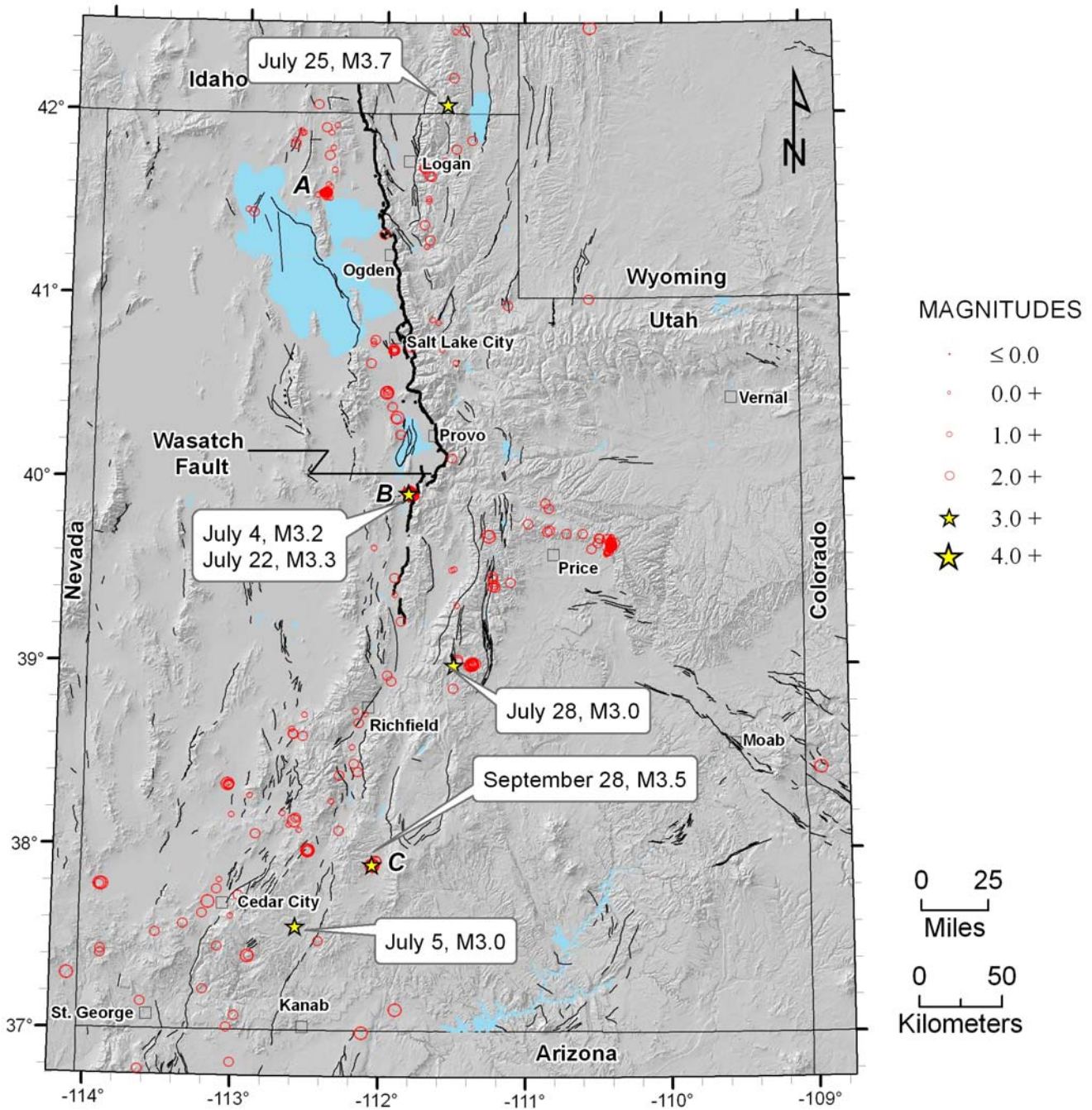


Figure 1. Earthquake epicenters, located by the University of Utah Seismograph Stations, superposed on a map of Quaternary (geologically young) faults compiled by the Utah Geological Survey. The Wasatch fault is shown in bold. Earthquakes of magnitude 3.0 and larger are labeled by local date and size. Earthquake clusters labeled A-C are discussed in the text.

Table 1

**EARTHQUAKES FELT AND/OR GENERATING A SHAKEMAP IN THE UTAH REGION
January 1, 2011 to September 30, 2011**

| Date | Time† | Felt Information‡ | Latitude | Longitude | Magnitude§ |
|--------------------------|------------------------|--|-----------------|------------------|--------------------|
| January 03 | 05:06 MST 12:06 UTC | Utah. <i>CIIM</i> . Felt (IV) at Kingston, Joseph, Panguitch, and Modena (?), UT, (III) at Marysvale, Beaver, Sevier, and Beryl (?), UT, and (II) at Greenville, Antimony, Monroe, Torrey, Loa, Parowan, Richfield, Cedar City, Milford, Kanab, Saint George, Saratoga Springs, Draper, Tooele, Sandy, Salt Lake City, Centerville, and Garden City (?), UT, Page, Flagstaff, AZ, Mesquite, Henderson, Las Vegas, NV, Eagle (?), ID and National City (?), CA. | 38° 14.84' | 112° 20.39' | M _L 4.6 |
| January 03 | 13:23 MST 20:23 UTC | Utah. <i>CIIM</i> . Felt (IV) at Beaver, UT, (III) at Monroe and Teasdale, UT and (II) at Nephi, UT. | 38° 14.27' | 112° 20.29' | M _L 3.2 |
| January 05 January 06 | 20:18 MST 03:18 UTC | Utah. <i>CIIM</i> . Felt (II) at Salt Lake City (?), UT. | 38° 15.67' | 112° 19.99' | M _L 3.1 |
| January 06 | 15:31 MST 22:31 UTC | Utah. <i>CIIM</i> . Felt (II) at Beaver (?), AZ. | 38° 15.73' | 112° 20.03' | M _L 3.5 |
| January 07 | 15:51 MST 22:51 UTC | Utah. <i>CIIM</i> . Felt (II) at Beaver, UT. | 38° 15.42' | 112° 19.83' | M _L 3.3 |
| January 12 | 01:46 MST 08:46 UTC | Utah. <i>CIIM</i> . Felt (II) at Marysvale and Cedar City, UT. | 38° 14.31' | 112° 20.43' | M _L 3.6 |
| January 20 | 14:59 MST 21:59 UTC | Utah. <i>CIIM</i> . Felt (III) at Centerfield and Saratoga Springs (?), UT and (II) at Gunnison, South Jordan, La Verkin, Saint George, UT and Lakeside (?), AZ | 37° 46.58' | 111° 54.57' | M _L 3.3 |

| | | | | | |
|----------------------------|------------------------|--|------------|-------------|--------------------|
| January 25 January 26 | 22:10 MST 05:10 UTC | Idaho. <i>CIIM</i> . Felt (III) at Thatcher, Grace, Paris and Preston, ID and Salt Lake City (?), UT and (II) at Bern, Montpelier, Soda Springs, Lava Hot Springs, Downey, Bancroft, Pocatello, Ellis (?), Boise (?), ID and Torrington (?), WY. | 42° 25.44' | 111° 29.96' | M _L 3.7 |
| February 11 February 12 | 19:38 MST 02:38 UTC | Utah. <i>CIIM</i> . Felt (III) at Lehi and Saratoga Springs (?), UT and (II) at Eagle Mountain, Draper, Magna, Pleasant Grove, Salt Lake City, UT. | 40° 22.89' | 111° 55.24' | M _L 2.4 |
| February 13 | 02:25 MST 09:25 UTC | Utah. <i>CIIM</i> . Felt (III) at Saratoga Springs and Midvale, UT and (II) at Eagle Mountain, Herriman, South Jordan, Orem, West Jordan, Springville, UT and Phoenix (?), AZ. | 40° 23.00' | 111° 55.15' | M _L 2.7 |
| February 13 February 14 | 18:09 MST 01:09 UTC | Utah. <i>CIIM</i> . Felt (III) at Draper and Saratoga Springs, UT and (II) at Lehi, Riverton, Eagle Mountain, Herriman, Pleasant Grove, South Jordan, Salt Lake City, UT and Phoenix (?), AZ. | 40° 23.10' | 111° 55.44' | M _L 2.8 |
| April 11 April 12 | 21:34 MDT 03:34 UTC | Utah. <i>CIIM</i> . Felt (II) at Cedar City, UT. | 37° 46.58' | 113° 06.74' | M _L 2.2 |
| April 12 | 00:11 MDT 06:11 UTC | Utah. <i>CIIM</i> . Felt (III) at Cedar City, UT. | 37° 46.34' | 113° 06.96' | M _L 2.7 |
| April 13 | 04:17 MDT 10:17 UTC | Utah. <i>CIIM</i> . Felt (II) at Cedar City, UT. | 37° 45.15' | 113° 07.88' | M _L 2.7 |
| July 04 July 05 | 21:22 MDT 03:22 UTC | Utah. <i>CIIM</i> . Felt (III) at Payson, UT and (II) at Mona, Santaquin, Provo, Nephi, Sandy, Salt Lake City, Richfield, and Monroe, UT. | 39° 55.82' | 111° 49.26' | M _L 3.2 |

| | | | | | |
|--------------------|------------------------|--|------------|-------------|--------------------|
| July 05 | 08:59 MDT 14:59 UTC | Utah. <i>CIIM</i> . Felt (III) at Alton, and Brian Head, UT and (II) at Panguitch, Escalante, and Provo (?), UT. | 37° 34.16' | 112° 34.48' | M _L 3.0 |
| July 22 | 01:05 MDT 07:05 UTC | Utah. <i>CIIM</i> . Felt (III) at Santaquin, Salem, Spanish Fork, Cedar Valley, Nephi, and Mount Pleasant, UT and (II) at Mona and Payson, UT. | 39° 55.92' | 111° 49.39' | M _L 3.3 |
| July 25 July 26 | 21:38 MDT 03:38 UTC | Idaho. <i>CIIM</i> . Felt (IV) at garden City, UT, (III) at Saint Charles, Franklin, ID, Providence, Salt Lake City (?), UT and (II) at Fish Haven, Preston, Montpelier, ID, Richmond, Lewinston, Hyde Park, Smithfield, Logan, Collinston, Farmington, Centerville, Bountiful, Salem (?), UT. | 42° 03.13' | 111° 33.51' | M _L 3.7 |
| August 12 | 16:07 MDT 22:07 UTC | Utah. <i>CIIM</i> . Felt (II) at Riverton, Herriman, South Jordan, Draper, West Jordan, Lehi, Sandy, Salt Lake City, Magna, and Provo, UT. | 40° 28.66' | 111° 59.02' | M _L 2.5 |
| September 06 | 08:33 MDT 14:33 UTC | Utah. <i>CIIM</i> . Felt (II) at Sandy (?), UT and Baker (?), NV. | 39° 00.19' | 111° 22.39' | M _L 2.9 |
| September 28 | 00:31 MDT 06:31 UTC | Utah. <i>CIIM</i> . Felt (II) at Escalante, Panguitch, Saint George (?), and Salt Lake City (?), UT. | 37° 54.58' | 112° 03.23' | M _L 3.5 |

† Times are listed both as Local Time—Mountain Standard Time (MST) or Mountain Daylight Time (MDT)—and as Universal Coordinated Time (UTC).

‡ *CIIM* indicates the availability of a Community Internet Intensity Map (<http://pasadena.wr.usgs.gov/shake/imw/archives.html>), compiled by the U.S. Geological Survey (USGS); *ShakeMap* indicates the availability of computer-generated maps of ground-shaking (<http://www.seis.utah.edu/shake/archive>), produced by the University of Utah Seismograph Stations (UUSS). Roman numerals correspond to the Modified Mercalli intensity scale. Unless otherwise indicated, felt information is from the USGS's (1) *CIIM* reports and/or (2) PDE Monthly (or) Weekly Listing Files (http://neic.usgs.gov/neis/data_services/ftp_files.html). For a complete list of reported information see the *CIIM* website.

§ Richter local magnitude (M_L) or coda magnitude (M_C) determined by UUSS. If labeled “NEIC,” data are from the National Earthquake Information Center of the USGS.

Utah Regional/Urban Seismic Network September 30, 2011

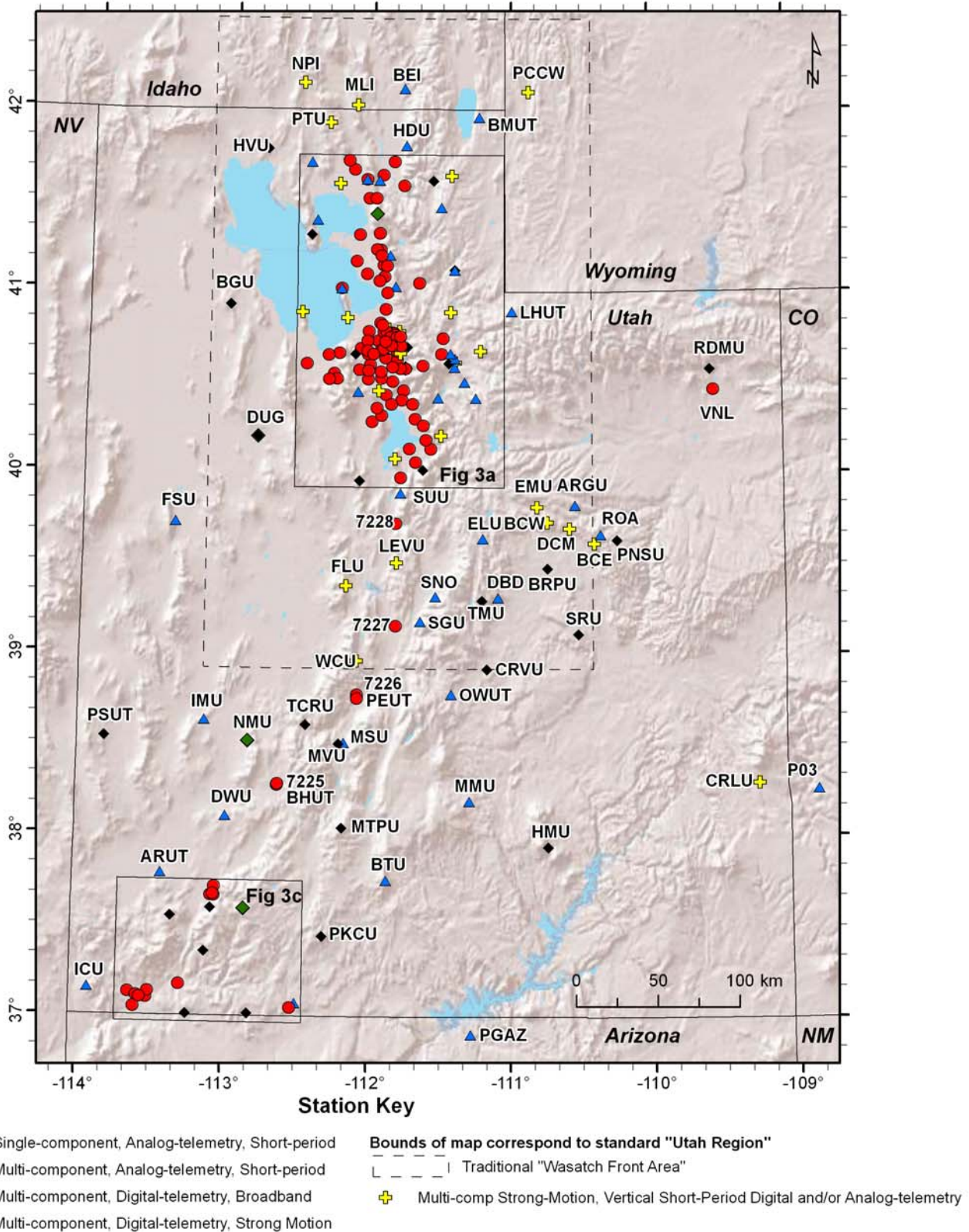


Figure 2

Utah Urban Seismic Network (September 30, 2011)

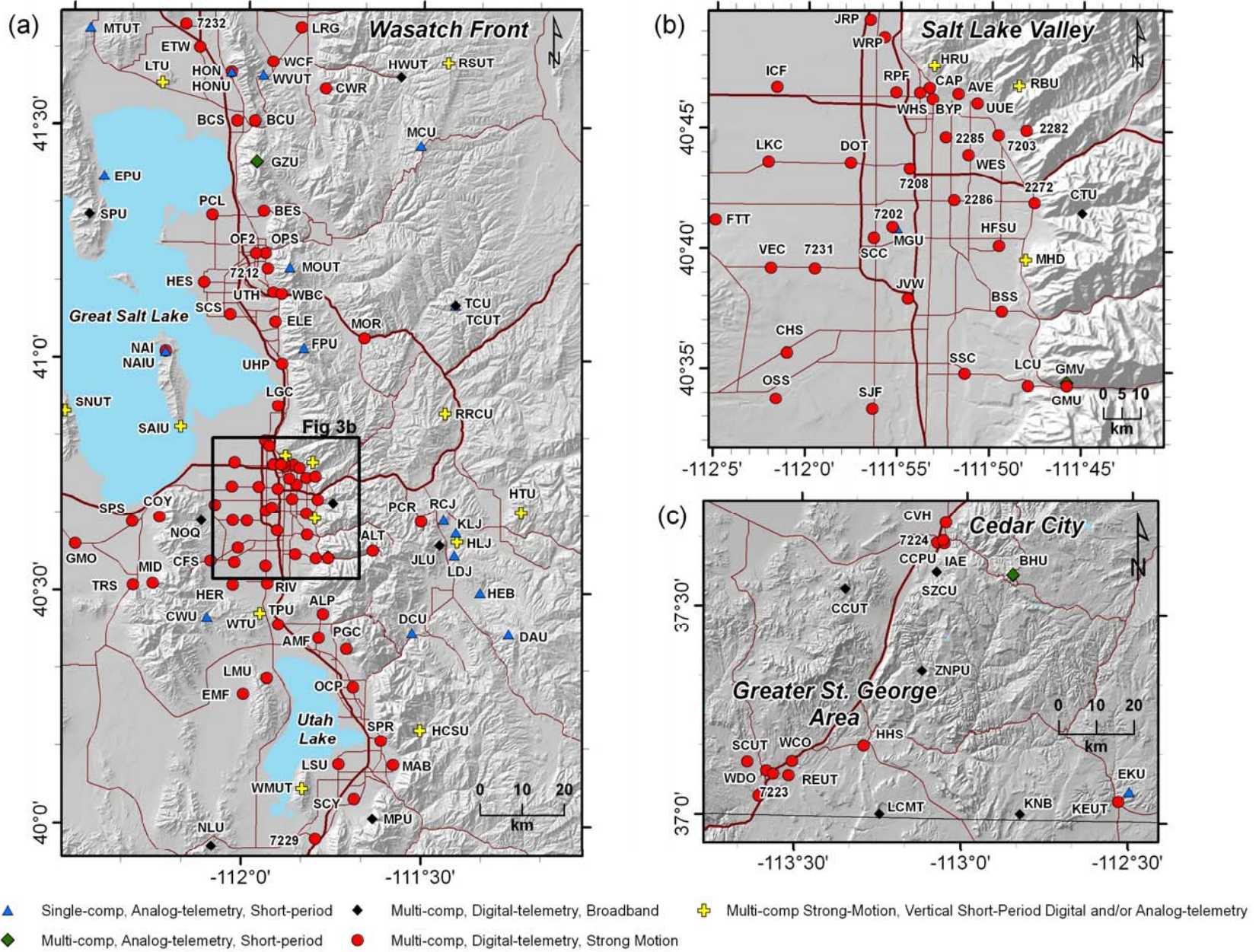


Figure 3

Table 2. Earthquakes in the Utah Region: July 1–September 30, 2011

| DATE | ORIGIN TIME | LATITUDE | LONGITUDE | DEPTH | MAG | NO | GAP | DMN | RMS |
|--------|-------------|------------|-------------|-------|------|----|-----|-----|------|
| 110701 | 10:15:55.92 | 38° 15.19' | 112° 20.33' | 3.9* | 0.3 | 7 | 104 | 27 | 0.25 |
| 110701 | 11:56:25.56 | 39° 55.72' | 111° 49.26' | 3.1 | 1.6 | 22 | 56 | 5 | 0.24 |
| 110701 | 13:45:55.92 | 39° 42.60' | 111° 15.28' | 1.7 | 1.6W | 15 | 73 | 9 | 0.31 |
| 110701 | 13:50:36.58 | 39° 38.63' | 110° 23.90' | 0.1 | 1.5W | 11 | 92 | 4 | 0.17 |
| 110701 | 19:45:45.13 | 42° 11.76' | 111° 31.16' | 12.0 | 1.0 | 9 | 250 | 24 | 0.25 |
| 110701 | 22:50:53.47 | 39° 39.06' | 110° 23.64' | 1.6 | 1.5 | 11 | 99 | 3 | 0.27 |
| 110702 | 08:48:00.49 | 39° 55.10' | 111° 48.85' | 8.5 | 1.4 | 12 | 108 | 4 | 0.17 |
| 110702 | 09:24:11.58 | 39° 38.52' | 110° 24.27' | 0.0 | 1.8 | 13 | 93 | 4 | 0.20 |
| 110702 | 11:02:37.26 | 38° 59.41' | 111° 22.85' | 9.4* | 1.4 | 10 | 81 | 20 | 0.15 |
| 110702 | 20:25:18.54 | 39° 55.88' | 111° 49.27' | 6.7 | 2.5W | 29 | 54 | 5 | 0.23 |
| 110703 | 03:04:06.67 | 39° 56.38' | 111° 48.85' | 3.5 | 1.3 | 17 | 55 | 6 | 0.13 |
| 110703 | 04:10:03.52 | 39° 26.65' | 111° 12.87' | 2.7* | 0.8 | 8 | 118 | 16 | 0.13 |
| 110703 | 05:17:27.65 | 39° 38.79' | 110° 24.24' | 0.0 | 1.7W | 11 | 94 | 4 | 0.17 |
| 110703 | 14:30:55.01 | 39° 38.64' | 110° 23.85' | 0.1 | 0.4 | 5 | 192 | 3 | 0.18 |
| 110703 | 14:40:32.08 | 39° 39.70' | 110° 23.59' | 1.5 | -0.1 | 5 | 176 | 2 | 0.37 |
| 110704 | 09:40:16.93 | 42° 28.12' | 110° 31.77' | 1.5* | 2.1W | 10 | 149 | 57 | 0.20 |
| 110704 | 11:42:40.06 | 39° 38.73' | 110° 24.07' | 0.5 | 1.7W | 14 | 92 | 4 | 0.20 |
| 110704 | 13:00:25.35 | 40° 38.30' | 112° 05.91' | 2.9 | 1.6 | 10 | 132 | 2 | 0.11 |
| 110704 | 14:24:50.55 | 39° 56.33' | 111° 48.89' | 1.1 | 1.1 | 11 | 118 | 6 | 0.21 |
| 110705 | 03:22:06.63 | 39° 55.82' | 111° 49.26' | 6.5 | 3.2W | 46 | 54 | 5 | 0.23 |
| 110705 | 09:16:34.63 | 39° 39.16' | 110° 24.21' | 2.2 | 1.7 | 11 | 105 | 4 | 0.35 |
| 110705 | 14:59:04.35 | 37° 34.16' | 112° 34.48' | 9.6* | 3.0W | 19 | 52 | 25 | 0.24 |
| 110705 | 16:20:32.85 | 36° 59.39' | 112° 07.02' | 12.5* | 2.1 | 9 | 113 | 35 | 0.13 |
| 110705 | 16:21:26.14 | 39° 40.35' | 110° 23.54' | 1.6 | 0.2 | 5 | 162 | 3 | 0.52 |
| 110705 | 20:37:48.48 | 39° 39.33' | 110° 23.87' | 0.0 | 1.4 | 9 | 132 | 3 | 0.12 |
| 110705 | 21:58:01.55 | 39° 40.14' | 110° 23.16' | 1.5 | 0.8 | 6 | 149 | 2 | 0.41 |
| 110706 | 12:04:11.12 | 39° 38.95' | 110° 24.06' | 0.0 | 1.5W | 11 | 98 | 3 | 0.20 |
| 110706 | 17:01:19.75 | 41° 18.74' | 111° 41.09' | 10.2* | 1.1 | 19 | 87 | 22 | 0.21 |
| 110707 | 07:50:20.79 | 39° 55.90' | 111° 49.02' | 6.5 | 2.1W | 31 | 85 | 5 | 0.19 |
| 110707 | 23:40:06.19 | 41° 32.76' | 112° 26.11' | 3.4* | 0.8 | 6 | 131 | 17 | 0.09 |
| 110709 | 05:43:09.99 | 39° 55.73' | 111° 48.98' | 5.8 | 1.9W | 25 | 68 | 5 | 0.22 |
| 110709 | 13:39:37.02 | 39° 55.38' | 111° 48.80' | 8.0 | 1.2 | 10 | 99 | 4 | 0.14 |
| 110709 | 15:26:21.25 | 41° 49.63' | 112° 39.93' | 6.7 | 1.1 | 13 | 212 | 11 | 0.15 |
| 110709 | 15:57:23.56 | 41° 27.27' | 112° 57.31' | 3.7* | 1.1 | 12 | 197 | 39 | 0.19 |
| 110709 | 19:01:05.10 | 38° 56.52' | 111° 57.68' | 12.0 | 1.3 | 9 | 118 | 11 | 0.16 |
| 110709 | 21:47:41.59 | 37° 17.59' | 114° 07.66' | 7.0* | 2.0 | 8 | 131 | 24 | 0.10 |
| 110709 | 22:56:50.60 | 41° 33.77' | 112° 26.66' | 3.2* | 0.8 | 8 | 130 | 16 | 0.29 |
| 110709 | 23:59:02.36 | 41° 32.39' | 112° 24.51' | 3.1* | 0.6 | 6 | 124 | 15 | 0.06 |
| 110710 | 01:03:25.86 | 41° 33.86' | 112° 26.77' | 2.9* | 0.6 | 9 | 131 | 16 | 0.26 |
| 110710 | 02:57:23.41 | 41° 33.32' | 112° 29.94' | 6.1* | 0.5 | 5 | 264 | 18 | 0.13 |
| 110710 | 05:08:02.48 | 39° 39.34' | 110° 24.01' | 0.1 | 1.6 | 13 | 111 | 3 | 0.25 |
| 110710 | 05:27:55.12 | 41° 33.49' | 112° 26.82' | 2.4* | 0.9 | 13 | 132 | 17 | 0.28 |
| 110710 | 12:51:02.99 | 39° 55.20' | 111° 48.82' | 4.6 | 1.0 | 10 | 120 | 4 | 0.22 |
| 110711 | 04:39:41.99 | 39° 39.65' | 110° 23.92' | 1.5 | 0.1 | 5 | 177 | 3 | 0.56 |
| 110711 | 04:40:10.09 | 39° 40.17' | 110° 24.24' | 3.0 | 0.4 | 5 | 171 | 4 | 0.69 |

Table 2. Earthquakes in the Utah Region: July 1–September 30, 2011

| DATE | ORIGIN TIME | LATITUDE | LONGITUDE | DEPTH | MAG | NO | GAP | DMN | RMS |
|--------|-------------|------------|-------------|-------|------|----|-----|-----|------|
| 110711 | 05:30:00.85 | 38° 16.91' | 112° 54.10' | 13.7 | 0.9 | 10 | 124 | 21 | 0.25 |
| 110711 | 07:18:00.02 | 39° 40.75' | 110° 23.11' | 1.5 | 0.3 | 5 | 155 | 3 | 0.52 |
| 110711 | 07:18:09.52 | 41° 43.23' | 111° 32.14' | 10.5 | 0.7 | 9 | 107 | 13 | 0.18 |
| 110711 | 09:25:26.98 | 39° 39.68' | 110° 23.82' | 1.5 | 0.5 | 5 | 177 | 3 | 0.53 |
| 110711 | 09:29:56.21 | 39° 39.78' | 110° 23.99' | 0.2 | 1.5 | 8 | 128 | 3 | 0.24 |
| 110711 | 14:43:45.48 | 39° 54.72' | 111° 48.50' | 6.5 | 1.5 | 15 | 101 | 3 | 0.23 |
| 110711 | 22:29:18.14 | 39° 55.16' | 111° 49.07' | 5.7 | 1.4 | 15 | 105 | 4 | 0.23 |
| 110712 | 06:38:17.70 | 39° 39.84' | 110° 22.18' | 0.8 | 1.4 | 7 | 163 | 1 | 0.14 |
| 110712 | 14:05:26.15 | 39° 56.38' | 111° 49.29' | 1.1 | 1.3 | 12 | 113 | 6 | 0.10 |
| 110712 | 17:52:51.65 | 39° 54.95' | 111° 47.17' | 4.1 | 1.4 | 12 | 83 | 3 | 0.29 |
| 110712 | 21:34:46.45 | 39° 41.34' | 110° 28.56' | 1.6 | 1.6W | 12 | 129 | 9 | 0.25 |
| 110713 | 09:28:01.64 | 39° 55.91' | 111° 48.67' | 4.9 | 2.3W | 19 | 81 | 5 | 0.22 |
| 110713 | 10:52:49.25 | 41° 36.68' | 112° 25.24' | 2.0* | 0.5 | 5 | 203 | 11 | 0.13 |
| 110714 | 01:35:45.15 | 39° 56.09' | 111° 49.30' | 1.4 | 1.4 | 13 | 121 | 6 | 0.26 |
| 110714 | 05:32:40.66 | 39° 40.74' | 110° 24.22' | 3.5 | 0.6 | 5 | 157 | 4 | 0.86 |
| 110714 | 06:23:51.52 | 41° 33.02' | 112° 26.18' | 3.3* | 0.9 | 8 | 130 | 16 | 0.22 |
| 110714 | 06:40:24.92 | 39° 41.53' | 110° 29.05' | 2.3 | 1.5 | 6 | 127 | 9 | 0.29 |
| 110714 | 12:39:47.28 | 38° 54.49' | 111° 56.03' | 5.6* | 1.7 | 11 | 65 | 15 | 0.10 |
| 110714 | 19:00:59.39 | 39° 40.11' | 110° 24.41' | 1.7 | 1.9W | 13 | 136 | 4 | 0.38 |
| 110714 | 19:47:19.28 | 39° 55.68' | 111° 48.63' | 7.6 | 1.6 | 15 | 98 | 5 | 0.24 |
| 110714 | 19:49:16.44 | 39° 41.11' | 110° 24.03' | 2.2 | 0.4 | 5 | 155 | 4 | 0.83 |
| 110714 | 19:49:35.48 | 39° 40.59' | 110° 24.53' | 2.8 | 0.4 | 5 | 164 | 4 | 0.91 |
| 110714 | 21:25:50.45 | 41° 33.67' | 112° 26.69' | 3.0* | 0.7 | 8 | 131 | 17 | 0.21 |
| 110714 | 22:22:25.45 | 39° 55.86' | 111° 48.24' | 9.1 | 1.2 | 10 | 96 | 5 | 0.13 |
| 110715 | 05:48:51.05 | 40° 42.67' | 111° 55.90' | 5.5 | 0.8 | 13 | 111 | 10 | 0.14 |
| 110715 | 08:22:48.43 | 40° 43.33' | 111° 56.20' | 1.9* | 1.0 | 12 | 99 | 13 | 0.19 |
| 110715 | 13:37:54.15 | 39° 56.38' | 111° 49.10' | 1.5 | 1.2 | 10 | 116 | 6 | 0.17 |
| 110715 | 15:09:11.23 | 40° 42.74' | 111° 55.97' | 4.1 | 1.6 | 23 | 69 | 10 | 0.17 |
| 110715 | 17:04:58.00 | 40° 42.71' | 111° 56.18' | 4.8* | 1.3 | 16 | 69 | 10 | 0.21 |
| 110715 | 17:11:17.03 | 39° 55.91' | 111° 48.86' | 8.5 | 0.9 | 5 | 163 | 5 | 0.05 |
| 110715 | 17:26:01.57 | 40° 42.57' | 111° 55.95' | 3.2* | 0.9 | 10 | 112 | 13 | 0.12 |
| 110716 | 06:28:50.54 | 39° 55.62' | 111° 49.11' | 6.9 | 1.2 | 15 | 120 | 5 | 0.20 |
| 110716 | 12:57:47.12 | 39° 41.21' | 110° 23.91' | 3.5 | 0.2 | 5 | 156 | 4 | 0.87 |
| 110716 | 13:36:27.79 | 39° 41.23' | 110° 24.02' | 2.2 | 0.1 | 5 | 155 | 4 | 0.89 |
| 110716 | 13:43:34.56 | 38° 44.87' | 112° 10.72' | 9.8* | 0.3 | 5 | 141 | 25 | 0.08 |
| 110716 | 13:49:05.88 | 39° 42.26' | 110° 23.64' | 4.3 | -0.5 | 5 | 168 | 5 | 0.94 |
| 110716 | 13:49:25.63 | 39° 41.38' | 110° 23.95' | 2.7 | 0.1 | 5 | 158 | 4 | 0.91 |
| 110716 | 15:06:41.33 | 40° 42.73' | 111° 56.40' | 3.9* | 1.6 | 34 | 41 | 10 | 0.23 |
| 110716 | 15:19:14.47 | 40° 42.35' | 111° 56.44' | 4.4* | 1.3 | 19 | 71 | 11 | 0.22 |
| 110716 | 17:04:17.82 | 39° 55.35' | 111° 48.03' | 6.2 | 2.3W | 28 | 68 | 4 | 0.24 |
| 110716 | 18:50:48.63 | 39° 26.94' | 111° 06.34' | 3.5* | 1.3W | 7 | 89 | 15 | 0.23 |
| 110716 | 21:55:29.05 | 41° 48.41' | 111° 29.86' | 4.4* | 1.4 | 17 | 143 | 20 | 0.24 |
| 110717 | 00:04:09.31 | 39° 56.04' | 111° 48.76' | 1.4 | 1.8W | 31 | 90 | 5 | 0.24 |
| 110717 | 21:23:43.86 | 39° 55.91' | 111° 47.56' | 1.2 | 1.4 | 10 | 83 | 5 | 0.27 |
| 110717 | 22:03:00.31 | 36° 49.48' | 113° 00.47' | 15.3 | 1.5 | 10 | 235 | 27 | 0.37 |

Table 2. Earthquakes in the Utah Region: July 1–September 30, 2011

| DATE | ORIGIN TIME | LATITUDE | LONGITUDE | DEPTH | MAG | NO | GAP | DMN | RMS |
|--------|-------------|------------|-------------|-------|------|----|-----|-----|------|
| 110718 | 01:04:41.08 | 38° 24.82' | 112° 09.51' | 0.2* | 1.1 | 14 | 70 | 11 | 0.14 |
| 110718 | 13:28:51.75 | 39° 55.27' | 111° 48.26' | 3.2 | 1.3 | 12 | 90 | 4 | 0.24 |
| 110718 | 16:49:37.99 | 39° 56.17' | 111° 50.41' | 1.5* | 1.5 | 8 | 95 | 16 | 0.22 |
| 110718 | 23:40:05.10 | 41° 33.92' | 112° 26.51' | 1.9* | 1.3 | 15 | 97 | 16 | 0.22 |
| 110718 | 23:48:27.16 | 41° 33.83' | 112° 26.59' | 2.5* | 0.7 | 11 | 127 | 16 | 0.19 |
| 110719 | 05:14:36.76 | 41° 34.88' | 112° 26.49' | 2.1* | 0.5 | 9 | 95 | 14 | 0.15 |
| 110719 | 05:17:37.89 | 37° 24.36' | 112° 54.05' | 1.0* | 2.4W | 21 | 58 | 21 | 0.23 |
| 110719 | 07:08:10.51 | 39° 41.86' | 110° 23.66' | 3.7 | -0.1 | 5 | 163 | 5 | 1.00 |
| 110719 | 08:09:23.54 | 39° 41.88' | 110° 23.64' | 3.7 | 0.9 | 5 | 164 | 5 | 1.00 |
| 110719 | 10:41:53.01 | 41° 55.17' | 112° 26.61' | 5.5* | 1.2 | 16 | 123 | 23 | 0.26 |
| 110719 | 12:01:59.28 | 39° 41.81' | 110° 23.57' | 4.2 | 0.7 | 5 | 164 | 5 | 0.96 |
| 110719 | 13:08:22.97 | 39° 55.12' | 111° 47.79' | 8.3 | 1.0 | 8 | 120 | 3 | 0.12 |
| 110719 | 16:18:35.31 | 39° 57.57' | 111° 48.67' | 2.9 | 0.7 | 6 | 101 | 8 | 0.22 |
| 110719 | 18:34:28.43 | 39° 40.29' | 110° 23.80' | 0.1 | 1.5 | 8 | 147 | 3 | 0.49 |
| 110719 | 19:05:51.56 | 39° 25.33' | 111° 12.69' | 9.6 | 1.6 | 5 | 252 | 14 | 0.14 |
| 110720 | 10:41:55.89 | 38° 43.82' | 112° 06.47' | 3.9* | 0.7 | 6 | 127 | 25 | 0.31 |
| 110720 | 22:28:31.74 | 39° 54.92' | 111° 48.51' | 6.8 | 1.1 | 12 | 123 | 3 | 0.22 |
| 110721 | 12:04:34.66 | 38° 20.68' | 113° 03.06' | 3.9* | 0.8 | 10 | 135 | 26 | 0.14 |
| 110721 | 12:09:23.55 | 41° 42.29' | 111° 43.96' | 3.2* | 1.0 | 9 | 120 | 11 | 0.18 |
| 110721 | 12:10:53.37 | 41° 42.52' | 111° 43.49' | 2.4* | 1.2 | 9 | 126 | 11 | 0.21 |
| 110721 | 13:47:27.41 | 39° 56.00' | 111° 49.15' | 1.5 | 1.5 | 10 | 112 | 6 | 0.21 |
| 110721 | 13:48:07.41 | 39° 56.28' | 111° 48.83' | 1.4 | 1.8 | 10 | 119 | 6 | 0.21 |
| 110721 | 22:41:57.73 | 41° 41.97' | 111° 44.58' | 3.9* | 0.8 | 10 | 100 | 12 | 0.28 |
| 110721 | 23:11:17.56 | 40° 15.06' | 111° 52.95' | 2.1 | 1.4 | 8 | 113 | 8 | 0.12 |
| 110722 | 06:44:12.63 | 40° 42.97' | 111° 35.39' | 7.0 | 0.7 | 23 | 64 | 14 | 0.20 |
| 110722 | 07:05:35.17 | 39° 55.92' | 111° 49.39' | 5.2 | 3.3W | 37 | 77 | 6 | 0.24 |
| 110723 | 08:21:36.96 | 38° 20.34' | 113° 03.06' | 2.9* | 1.1 | 12 | 135 | 26 | 0.21 |
| 110723 | 23:22:11.63 | 37° 37.38' | 113° 01.21' | 8.1 | 0.8 | 12 | 66 | 7 | 0.15 |
| 110724 | 02:33:24.77 | 41° 33.53' | 112° 26.45' | 1.9* | 0.8 | 16 | 127 | 17 | 0.21 |
| 110724 | 07:33:45.76 | 38° 19.96' | 113° 02.86' | 2.9* | 1.0 | 10 | 134 | 26 | 0.21 |
| 110724 | 11:37:09.76 | 41° 33.93' | 112° 26.46' | 0.9* | 1.4 | 19 | 97 | 16 | 0.19 |
| 110724 | 11:40:11.02 | 41° 34.13' | 112° 27.94' | 3.0* | 0.3 | 8 | 186 | 16 | 0.09 |
| 110724 | 12:11:24.02 | 41° 34.12' | 112° 28.02' | 2.9* | 0.4 | 8 | 187 | 16 | 0.14 |
| 110724 | 12:32:19.48 | 41° 34.26' | 112° 27.19' | 2.9* | 0.7 | 9 | 146 | 15 | 0.19 |
| 110724 | 16:15:48.58 | 41° 34.47' | 112° 25.67' | 2.9* | 0.8 | 10 | 93 | 15 | 0.31 |
| 110724 | 16:47:23.89 | 41° 33.57' | 112° 26.45' | 3.0* | 0.5 | 8 | 130 | 17 | 0.24 |
| 110724 | 17:41:28.61 | 39° 55.46' | 111° 48.83' | 0.7 | 1.1 | 15 | 113 | 5 | 0.23 |
| 110724 | 17:46:04.76 | 41° 34.22' | 112° 26.98' | 2.2* | 0.8 | 12 | 97 | 15 | 0.17 |
| 110724 | 20:50:49.32 | 38° 23.58' | 112° 17.27' | 2.4* | 1.2 | 12 | 105 | 16 | 0.21 |
| 110724 | 22:12:51.99 | 41° 34.04' | 112° 26.76' | 2.2* | 0.6 | 11 | 97 | 16 | 0.22 |
| 110725 | 00:03:33.58 | 38° 43.37' | 112° 31.90' | 2.1* | 0.8 | 10 | 155 | 15 | 0.23 |
| 110725 | 07:48:46.38 | 40° 57.25' | 111° 07.40' | 16.9 | 1.9W | 19 | 128 | 13 | 0.20 |
| 110725 | 07:50:30.61 | 39° 41.36' | 110° 25.54' | 13.1 | 1.1 | 5 | 155 | 6 | 0.16 |
| 110725 | 10:19:59.76 | 41° 33.88' | 112° 26.81' | 3.1* | 0.6 | 9 | 131 | 16 | 0.20 |
| 110725 | 10:40:55.49 | 38° 20.32' | 113° 03.37' | 1.8* | 2.6W | 18 | 135 | 26 | 0.24 |

Table 2. Earthquakes in the Utah Region: July 1–September 30, 2011

| DATE | ORIGIN TIME | LATITUDE | LONGITUDE | DEPTH | MAG | NO | GAP | DMN | RMS |
|--------|-------------|------------|-------------|-------|------|----|-----|-----|------|
| 110725 | 13:42:27.78 | 41° 34.19' | 112° 27.72' | 3.4* | 0.8 | 8 | 184 | 16 | 0.10 |
| 110725 | 17:38:57.93 | 39° 51.04' | 110° 50.07' | 8.3 | 1.4 | 7 | 224 | 4 | 0.24 |
| 110726 | 03:38:26.94 | 42° 03.13' | 111° 33.51' | 1.1* | 3.7W | 31 | 71 | 29 | 0.26 |
| 110726 | 09:54:31.42 | 41° 34.09' | 112° 27.07' | 2.8* | 0.5 | 7 | 179 | 16 | 0.15 |
| 110727 | 00:48:14.24 | 41° 34.74' | 112° 25.83' | 4.9* | 0.5 | 9 | 194 | 15 | 0.29 |
| 110727 | 13:36:48.14 | 37° 44.07' | 112° 58.10' | 2.9* | 1.8W | 19 | 73 | 19 | 0.20 |
| 110727 | 21:11:00.80 | 41° 33.67' | 112° 27.93' | 3.9* | 0.7 | 7 | 180 | 17 | 0.17 |
| 110728 | 22:34:55.71 | 39° 00.04' | 111° 29.90' | 0.7* | 3.0W | 17 | 83 | 24 | 0.23 |
| 110728 | 23:38:08.65 | 39° 52.85' | 110° 51.66' | 7.1 | 1.7 | 8 | 235 | 8 | 0.23 |
| 110729 | 01:03:43.69 | 39° 01.20' | 111° 28.30' | 4.2* | 1.5W | 7 | 93 | 24 | 0.07 |
| 110729 | 01:32:17.01 | 41° 33.82' | 112° 26.47' | 2.3* | 0.4 | 8 | 130 | 16 | 0.23 |
| 110729 | 02:17:24.42 | 39° 01.77' | 111° 28.23' | 5.2* | 1.8 | 6 | 90 | 23 | 0.19 |
| 110729 | 06:38:45.62 | 41° 33.87' | 112° 25.93' | 2.9* | 1.6 | 19 | 95 | 16 | 0.22 |
| 110729 | 06:40:01.66 | 39° 36.97' | 110° 25.12' | 3.9 | 0.3 | 5 | 217 | 7 | 0.68 |
| 110729 | 08:12:10.43 | 39° 36.53' | 110° 25.54' | 5.9 | 0.4 | 5 | 223 | 8 | 0.87 |
| 110730 | 13:02:21.22 | 39° 38.13' | 110° 24.20' | 0.2 | 0.4 | 5 | 199 | 4 | 0.21 |
| 110730 | 18:25:44.82 | 38° 20.15' | 113° 02.95' | 1.4* | 1.6 | 14 | 77 | 26 | 0.21 |
| 110730 | 22:34:34.51 | 39° 22.97' | 111° 54.80' | 15.2 | 0.8 | 6 | 135 | 16 | 0.15 |
| 110731 | 00:06:46.18 | 38° 36.45' | 112° 32.54' | 1.9 | 1.0 | 10 | 175 | 8 | 0.15 |
| 110731 | 06:43:04.31 | 41° 16.61' | 111° 42.37' | 12.7 | 0.9 | 23 | 86 | 22 | 0.14 |
| 110731 | 11:30:04.60 | 38° 26.13' | 108° 57.21' | 4.4* | 2.1W | 5 | 225 | 22 | 0.18 |
| 110731 | 23:10:00.18 | 37° 38.11' | 113° 12.95' | 2.0* | 1.0 | 10 | 85 | 12 | 0.15 |
| 110801 | 01:28:43.34 | 38° 59.66' | 111° 23.63' | 13.1 | 1.1W | 9 | 94 | 24 | 0.09 |
| 110801 | 02:32:23.81 | 39° 39.63' | 110° 23.09' | 1.5 | 0.0 | 5 | 176 | 2 | 0.37 |
| 110801 | 04:52:40.63 | 39° 55.19' | 111° 48.97' | 5.4 | 1.1 | 9 | 124 | 4 | 0.20 |
| 110801 | 11:19:35.17 | 39° 00.44' | 111° 22.32' | 12.7* | 1.8 | 8 | 95 | 26 | 0.09 |
| 110801 | 12:13:02.76 | 39° 42.90' | 110° 35.91' | 0.2 | 1.3 | 7 | 97 | 3 | 0.20 |
| 110802 | 02:46:54.37 | 38° 07.29' | 112° 37.69' | 3.9* | 0.7 | 9 | 85 | 32 | 0.18 |
| 110802 | 06:08:01.98 | 39° 42.94' | 110° 42.73' | 6.1 | 1.7 | 16 | 72 | 11 | 0.18 |
| 110802 | 21:12:24.77 | 41° 34.25' | 112° 26.03' | 2.2* | 0.8 | 13 | 94 | 15 | 0.21 |
| 110803 | 04:06:16.75 | 39° 56.42' | 111° 48.67' | 1.5 | 1.8W | 15 | 100 | 6 | 0.21 |
| 110803 | 14:42:04.35 | 41° 34.16' | 112° 25.91' | 2.5* | 1.0 | 13 | 124 | 16 | 0.24 |
| 110803 | 18:12:48.82 | 39° 44.91' | 110° 47.36' | 7.0 | -0.1 | 5 | 171 | 8 | 0.15 |
| 110804 | 03:19:36.92 | 39° 55.30' | 111° 49.20' | 5.3 | 1.1 | 10 | 105 | 5 | 0.19 |
| 110804 | 03:40:44.81 | 38° 09.68' | 112° 34.92' | 3.9* | 1.6 | 17 | 69 | 37 | 0.26 |
| 110805 | 23:57:07.33 | 40° 28.57' | 111° 58.55' | 9.0 | 1.5 | 12 | 85 | 3 | 0.14 |
| 110806 | 04:59:15.77 | 39° 39.18' | 110° 23.56' | 1.6 | -0.1 | 5 | 184 | 3 | 0.33 |
| 110806 | 05:22:09.47 | 39° 37.82' | 110° 24.28' | 0.2 | 0.1 | 5 | 204 | 5 | 0.34 |
| 110806 | 06:09:28.57 | 39° 37.15' | 110° 25.07' | 3.0 | 0.3 | 5 | 215 | 7 | 0.63 |
| 110806 | 11:01:32.66 | 40° 29.37' | 111° 58.46' | 6.9 | 0.8 | 15 | 96 | 4 | 0.23 |
| 110806 | 19:35:07.53 | 39° 42.09' | 111° 15.36' | 2.2 | 2.0W | 21 | 72 | 8 | 0.26 |
| 110806 | 23:45:46.72 | 40° 28.70' | 111° 58.96' | 7.4 | 2.2W | 36 | 58 | 4 | 0.20 |
| 110807 | 02:05:08.04 | 40° 29.30' | 111° 58.55' | 6.3 | 1.0 | 25 | 78 | 4 | 0.22 |
| 110807 | 09:17:46.35 | 39° 37.85' | 110° 24.31' | 0.2 | 0.0 | 5 | 204 | 5 | 0.31 |
| 110807 | 09:24:07.01 | 39° 37.79' | 110° 24.09' | 0.3 | 0.5 | 5 | 204 | 5 | 0.31 |

Table 2. Earthquakes in the Utah Region: July 1–September 30, 2011

| DATE | ORIGIN TIME | LATITUDE | LONGITUDE | DEPTH | MAG | NO | GAP | DMN | RMS |
|--------|-------------|------------|-------------|-------|------|----|-----|-----|------|
| 110807 | 09:35:29.73 | 39° 37.92' | 110° 24.26' | 0.3 | 0.1 | 5 | 203 | 5 | 0.26 |
| 110807 | 09:36:54.73 | 39° 37.63' | 110° 24.39' | 0.1 | 0.5 | 5 | 206 | 5 | 0.26 |
| 110807 | 09:47:07.83 | 39° 37.68' | 110° 24.13' | 0.2 | 0.1 | 5 | 206 | 5 | 0.35 |
| 110807 | 10:41:55.60 | 39° 26.28' | 111° 13.05' | 2.5* | 1.2 | 8 | 118 | 16 | 0.19 |
| 110807 | 11:01:19.28 | 39° 38.33' | 110° 24.30' | 0.6 | -0.2 | 5 | 197 | 4 | 0.21 |
| 110807 | 12:56:28.03 | 39° 39.05' | 110° 23.46' | 1.6 | 0.8 | 5 | 185 | 3 | 0.32 |
| 110808 | 05:23:09.22 | 39° 37.77' | 110° 24.20' | 0.3 | 0.8 | 5 | 204 | 5 | 0.25 |
| 110808 | 12:50:12.26 | 41° 33.91' | 112° 26.59' | 2.2* | 1.5 | 15 | 97 | 16 | 0.25 |
| 110809 | 15:22:39.07 | 39° 54.83' | 111° 48.92' | 6.9 | 1.5 | 7 | 120 | 4 | 0.12 |
| 110809 | 21:06:15.25 | 39° 37.94' | 110° 24.32' | 0.3 | 0.4 | 5 | 203 | 5 | 0.24 |
| 110810 | 08:50:08.26 | 37° 00.96' | 113° 02.30' | 11.5 | 1.3 | 7 | 187 | 18 | 0.30 |
| 110810 | 09:55:33.88 | 37° 24.34' | 113° 54.23' | 2.2* | 1.6 | 8 | 203 | 29 | 0.32 |
| 110810 | 09:56:27.88 | 39° 38.97' | 110° 23.63' | 1.6 | 1.0 | 7 | 136 | 3 | 0.29 |
| 110810 | 20:41:22.48 | 41° 44.87' | 111° 34.71' | 7.7* | 0.1 | 6 | 120 | 16 | 0.07 |
| 110811 | 04:29:59.11 | 39° 38.50' | 110° 23.97' | 1.7 | 0.9 | 7 | 140 | 4 | 0.38 |
| 110811 | 04:29:59.08 | 37° 25.80' | 113° 54.38' | 3.9* | 1.6 | 10 | 223 | 31 | 0.26 |
| 110811 | 05:25:04.63 | 38° 32.99' | 112° 11.94' | 6.7 | 0.9 | 10 | 106 | 5 | 0.17 |
| 110811 | 18:02:46.98 | 40° 43.50' | 111° 49.12' | 1.6 | 1.2 | 12 | 145 | 6 | 0.22 |
| 110812 | 08:11:10.00 | 39° 36.99' | 110° 25.34' | 3.1 | 0.3 | 5 | 217 | 7 | 0.79 |
| 110812 | 22:07:41.46 | 40° 28.66' | 111° 59.02' | 7.2 | 2.5W | 43 | 47 | 4 | 0.23 |
| 110813 | 00:36:57.89 | 41° 34.40' | 112° 25.09' | 2.4* | 0.6 | 8 | 194 | 14 | 0.28 |
| 110813 | 00:37:10.37 | 41° 34.05' | 112° 24.72' | 4.4* | 0.9 | 8 | 195 | 14 | 0.32 |
| 110813 | 03:09:52.51 | 38° 05.52' | 112° 17.14' | 2.2* | 1.3 | 14 | 75 | 11 | 0.25 |
| 110813 | 11:00:40.79 | 41° 23.58' | 111° 43.51' | 9.0* | 1.0 | 16 | 65 | 20 | 0.17 |
| 110814 | 01:28:39.17 | 41° 31.42' | 111° 41.56' | 10.2 | 0.8 | 9 | 185 | 14 | 0.04 |
| 110814 | 01:55:50.72 | 41° 32.34' | 111° 41.64' | 10.4 | 0.4 | 9 | 179 | 13 | 0.06 |
| 110814 | 22:50:28.06 | 39° 46.09' | 110° 58.84' | 12.9 | 1.0 | 5 | 282 | 15 | 0.27 |
| 110815 | 12:21:37.33 | 41° 41.55' | 112° 22.67' | 3.2 | 0.8 | 5 | 181 | 7 | 0.24 |
| 110815 | 20:32:52.90 | 38° 11.11' | 112° 40.46' | 3.9* | 0.9 | 12 | 84 | 30 | 0.29 |
| 110816 | 13:50:28.82 | 39° 01.07' | 111° 21.83' | 15.1 | 1.2 | 6 | 94 | 27 | 0.16 |
| 110816 | 15:32:30.67 | 38° 10.41' | 113° 01.39' | 1.6 | 0.9 | 10 | 127 | 8 | 0.26 |
| 110817 | 07:19:35.80 | 39° 38.38' | 110° 24.20' | 2.2 | 1.3 | 8 | 94 | 4 | 0.37 |
| 110817 | 07:20:06.01 | 39° 38.25' | 110° 24.23' | 0.6 | 0.6 | 5 | 199 | 4 | 0.20 |
| 110817 | 11:34:18.52 | 40° 44.68' | 112° 04.74' | 9.3 | 0.0 | 7 | 141 | 11 | 0.22 |
| 110817 | 11:51:36.91 | 38° 37.18' | 112° 36.70' | 1.5* | 1.3 | 13 | 112 | 14 | 0.24 |
| 110817 | 14:38:26.99 | 38° 36.96' | 112° 36.58' | 4.4* | 1.0 | 11 | 137 | 14 | 0.18 |
| 110817 | 15:17:52.25 | 39° 25.45' | 111° 13.71' | 6.5* | 1.8 | 17 | 85 | 14 | 0.14 |
| 110817 | 15:59:01.33 | 40° 46.06' | 112° 04.07' | 7.3 | 1.6 | 14 | 79 | 14 | 0.17 |
| 110817 | 17:04:01.37 | 38° 38.70' | 112° 37.19' | 2.5* | 0.1 | 6 | 231 | 16 | 0.17 |
| 110817 | 18:24:18.21 | 40° 45.66' | 112° 04.95' | 7.8 | 0.8 | 9 | 97 | 12 | 0.15 |
| 110818 | 01:00:02.88 | 41° 20.51' | 112° 00.77' | 1.9 | 1.2 | 14 | 99 | 10 | 0.16 |
| 110818 | 10:53:33.57 | 38° 08.65' | 112° 35.75' | 1.1* | 2.2W | 19 | 55 | 35 | 0.34 |
| 110818 | 16:01:28.98 | 41° 51.76' | 112° 37.96' | 3.8* | -- | 5 | 202 | 15 | 0.21 |
| 110819 | 08:53:45.24 | 37° 04.76' | 112° 59.19' | 13.2 | 1.7 | 17 | 77 | 16 | 0.26 |
| 110819 | 10:42:04.13 | 39° 00.33' | 111° 21.70' | 12.8* | 1.3W | 8 | 95 | 26 | 0.09 |

Table 2. Earthquakes in the Utah Region: July 1–September 30, 2011

| DATE | ORIGIN TIME | LATITUDE | LONGITUDE | DEPTH | MAG | NO | GAP | DMN | RMS |
|--------|-------------|------------|-------------|-------|------|----|-----|-----|------|
| 110819 | 16:42:35.60 | 39° 00.27' | 111° 21.98' | 11.3* | 1.1W | 7 | 95 | 26 | 0.06 |
| 110820 | 10:16:02.22 | 41° 33.82' | 112° 26.39' | 1.9* | 1.5 | 21 | 96 | 16 | 0.23 |
| 110820 | 15:12:55.04 | 38° 09.62' | 112° 34.73' | 3.9* | 0.8 | 13 | 112 | 37 | 0.24 |
| 110820 | 15:53:32.16 | 39° 36.79' | 110° 25.79' | 3.9 | 0.3 | 5 | 221 | 8 | 0.80 |
| 110820 | 23:11:29.21 | 39° 39.95' | 110° 29.34' | 1.8 | 1.5 | 10 | 108 | 9 | 0.22 |
| 110821 | 12:48:53.21 | 39° 31.49' | 111° 29.83' | 3.9* | 0.8 | 8 | 151 | 23 | 0.24 |
| 110821 | 13:39:24.39 | 39° 31.10' | 111° 30.84' | 5.2* | 0.7 | 7 | 187 | 22 | 0.22 |
| 110822 | 04:40:58.99 | 41° 33.81' | 112° 25.98' | 1.8* | 0.8 | 19 | 95 | 16 | 0.29 |
| 110822 | 09:44:30.52 | 40° 59.43' | 110° 32.76' | 0.7* | 1.6 | 12 | 266 | 67 | 0.24 |
| 110823 | 01:38:17.09 | 41° 35.95' | 112° 24.28' | 1.9* | 0.5 | 11 | 116 | 13 | 0.23 |
| 110823 | 06:54:54.82 | 39° 43.57' | 110° 50.65' | 4.2* | 1.2 | 6 | 121 | 10 | 0.68 |
| 110823 | 09:26:30.06 | 39° 39.18' | 110° 23.31' | 1.6 | 0.5 | 5 | 183 | 2 | 0.34 |
| 110823 | 16:41:05.63 | 42° 02.69' | 112° 30.05' | 1.3* | 0.9 | 6 | 236 | 20 | 0.15 |
| 110824 | 02:06:10.53 | 38° 05.79' | 112° 33.54' | 3.9* | 0.7 | 8 | 104 | 33 | 0.27 |
| 110824 | 14:42:46.21 | 38° 14.63' | 112° 19.72' | 3.9* | 0.0 | 8 | 127 | 26 | 0.19 |
| 110825 | 00:54:17.34 | 41° 39.44' | 111° 40.61' | 11.6 | 1.5 | 17 | 98 | 18 | 0.24 |
| 110825 | 10:27:30.78 | 39° 00.15' | 111° 21.65' | 6.4* | 1.4W | 11 | 95 | 25 | 0.16 |
| 110826 | 00:33:34.17 | 41° 53.64' | 112° 24.23' | 6.2 | 0.7 | 13 | 169 | 8 | 0.14 |
| 110827 | 00:27:08.24 | 37° 24.24' | 112° 53.34' | 1.3* | 1.5 | 14 | 84 | 21 | 0.22 |
| 110827 | 21:20:59.53 | 39° 38.79' | 110° 23.35' | 1.6 | 1.4 | 7 | 97 | 3 | 0.28 |
| 110828 | 23:08:57.95 | 41° 54.16' | 112° 37.35' | 7.3* | 0.9 | 11 | 208 | 19 | 0.25 |
| 110829 | 06:10:50.28 | 39° 39.21' | 110° 23.60' | 1.6 | 0.1 | 5 | 183 | 3 | 0.33 |
| 110830 | 06:19:59.23 | 42° 26.91' | 111° 30.57' | 7.1* | 0.7 | 10 | 282 | 43 | 0.23 |
| 110830 | 17:46:41.77 | 39° 38.26' | 110° 24.29' | 0.2 | 0.6 | 5 | 198 | 4 | 0.21 |
| 110831 | 05:46:36.02 | 39° 43.95' | 110° 49.67' | 5.9 | 1.3 | 5 | 208 | 9 | 0.27 |
| 110831 | 18:16:28.92 | 39° 00.42' | 111° 22.25' | 10.1* | 1.6W | 11 | 95 | 26 | 0.10 |
| 110831 | 22:28:43.46 | 37° 07.08' | 111° 53.28' | 0.1* | 2.6W | 13 | 117 | 52 | 0.19 |
| 110901 | 02:01:02.38 | 39° 00.09' | 111° 22.03' | 12.4* | 0.9 | 5 | 131 | 25 | 0.05 |
| 110901 | 11:00:07.77 | 40° 24.18' | 111° 56.59' | 5.8 | 1.0 | 10 | 116 | 6 | 0.12 |
| 110902 | 06:12:48.93 | 37° 49.10' | 113° 05.93' | 4.1* | 0.9 | 7 | 124 | 30 | 0.19 |
| 110903 | 04:45:26.27 | 41° 53.40' | 112° 37.04' | 7.7* | 0.8 | 11 | 203 | 18 | 0.22 |
| 110903 | 09:26:24.66 | 39° 36.35' | 110° 25.62' | 3.9 | 0.7 | 5 | 225 | 8 | 0.88 |
| 110903 | 20:48:18.00 | 41° 27.99' | 112° 57.37' | 4.3* | 0.7 | 9 | 197 | 38 | 0.29 |
| 110904 | 21:02:31.84 | 37° 58.91' | 112° 29.49' | 3.0* | 1.0 | 18 | 88 | 28 | 0.20 |
| 110904 | 23:02:54.65 | 37° 59.11' | 112° 29.87' | 1.4* | 2.1W | 23 | 73 | 28 | 0.26 |
| 110905 | 03:26:48.60 | 37° 58.99' | 112° 30.07' | 1.2* | 1.5 | 22 | 72 | 29 | 0.27 |
| 110905 | 04:33:47.42 | 41° 41.32' | 111° 43.82' | 2.2* | 0.9 | 12 | 71 | 13 | 0.23 |
| 110905 | 05:37:05.15 | 38° 20.20' | 113° 03.92' | 3.0* | 0.8 | 10 | 195 | 26 | 0.35 |
| 110905 | 12:23:22.82 | 40° 29.90' | 111° 59.08' | 8.5 | 0.3 | 9 | 185 | 6 | 0.16 |
| 110905 | 12:38:34.04 | 37° 59.00' | 112° 30.05' | 1.4* | 2.1W | 21 | 72 | 29 | 0.27 |
| 110905 | 12:44:39.52 | 37° 58.98' | 112° 29.83' | 1.4* | 2.2W | 24 | 73 | 28 | 0.25 |
| 110905 | 14:27:51.28 | 37° 08.89' | 113° 37.49' | 5.0* | 1.1 | 12 | 113 | 27 | 0.19 |
| 110906 | 01:55:33.02 | 40° 20.65' | 111° 54.46' | 10.3 | 2.1W | 21 | 92 | 4 | 0.21 |
| 110906 | 01:56:33.16 | 40° 20.30' | 111° 54.84' | 9.9 | 1.4 | 8 | 136 | 3 | 0.10 |
| 110906 | 10:48:45.42 | 39° 00.21' | 111° 22.18' | 9.1* | 2.1W | 15 | 95 | 25 | 0.10 |

Table 2. Earthquakes in the Utah Region: July 1–September 30, 2011

| DATE | ORIGIN TIME | LATITUDE | LONGITUDE | DEPTH | MAG | NO | GAP | DMN | RMS |
|--------|-------------|------------|-------------|-------|------|----|-----|-----|------|
| 110906 | 12:34:25.11 | 39° 00.60' | 111° 21.88' | 12.8* | 1.1 | 6 | 95 | 26 | 0.10 |
| 110906 | 14:10:06.70 | 39° 00.13' | 111° 22.23' | 4.3* | 2.5W | 21 | 74 | 25 | 0.17 |
| 110906 | 14:33:20.03 | 39° 00.19' | 111° 22.39' | 6.4* | 2.9W | 21 | 74 | 25 | 0.14 |
| 110906 | 14:38:45.61 | 38° 59.52' | 111° 21.83' | 5.2* | 1.7 | 9 | 96 | 24 | 0.21 |
| 110906 | 14:48:43.90 | 39° 00.31' | 111° 20.64' | 12.6* | 1.1W | 7 | 157 | 26 | 0.03 |
| 110907 | 21:08:19.95 | 37° 27.27' | 113° 06.44' | 0.4* | 1.4 | 10 | 128 | 11 | 0.10 |
| 110907 | 22:52:58.37 | 37° 31.60' | 113° 31.95' | 3.6* | 1.7 | 6 | 292 | 15 | 0.18 |
| 110908 | 14:36:50.33 | 39° 00.17' | 111° 21.96' | 12.1* | 1.6 | 7 | 95 | 25 | 0.10 |
| 110909 | 13:59:39.04 | 39° 14.17' | 111° 52.28' | 2.2* | 1.7 | 12 | 105 | 20 | 0.23 |
| 110909 | 20:31:43.60 | 39° 37.26' | 110° 24.95' | 2.8 | 1.2 | 6 | 111 | 6 | 0.60 |
| 110910 | 02:07:20.30 | 37° 45.95' | 113° 07.11' | 5.1* | 1.5 | 13 | 101 | 19 | 0.31 |
| 110910 | 10:22:00.81 | 41° 53.44' | 112° 36.39' | 7.1* | 0.8 | 13 | 200 | 19 | 0.22 |
| 110911 | 01:56:01.59 | 40° 07.38' | 111° 31.24' | 5.1* | 1.1 | 9 | 106 | 15 | 0.23 |
| 110912 | 15:39:50.55 | 40° 38.71' | 111° 29.70' | 1.6 | 0.6 | 7 | 291 | 5 | 0.22 |
| 110913 | 09:53:23.73 | 39° 38.25' | 112° 03.76' | 5.0* | 0.3 | 6 | 160 | 26 | 0.28 |
| 110914 | 01:49:57.13 | 42° 27.25' | 111° 26.66' | 7.9* | 1.2 | 8 | 293 | 47 | 0.12 |
| 110915 | 08:39:04.04 | 39° 39.26' | 110° 23.43' | 1.5 | 1.2 | 5 | 182 | 2 | 0.30 |
| 110917 | 03:05:11.72 | 39° 28.15' | 111° 13.71' | 3.1* | 1.6 | 8 | 128 | 19 | 0.16 |
| 110917 | 16:30:01.80 | 37° 41.81' | 113° 10.64' | 2.2* | 2.6W | 10 | 93 | 14 | 0.20 |
| 110917 | 17:16:18.12 | 41° 46.11' | 112° 24.96' | 9.9 | 1.6 | 12 | 128 | 7 | 0.20 |
| 110918 | 01:00:22.40 | 39° 19.64' | 111° 28.69' | 21.6 | 0.8 | 8 | 121 | 5 | 0.04 |
| 110918 | 07:31:26.35 | 41° 51.34' | 111° 22.98' | 3.9* | 1.0 | 10 | 136 | 17 | 0.11 |
| 110918 | 12:49:34.09 | 41° 56.16' | 112° 21.71' | 4.4 | 0.6 | 6 | 226 | 3 | 0.27 |
| 110919 | 18:28:03.61 | 38° 04.17' | 112° 51.54' | 19.5 | 1.0 | 7 | 96 | 13 | 0.22 |
| 110919 | 18:57:09.48 | 39° 37.51' | 110° 24.22' | 0.1 | 0.5 | 5 | 208 | 5 | 0.29 |
| 110920 | 02:18:46.73 | 37° 46.97' | 113° 55.13' | 3.1* | 2.1W | 15 | 184 | 42 | 0.40 |
| 110920 | 10:14:13.84 | 39° 38.01' | 110° 32.19' | 2.7 | 1.7 | 5 | 239 | 8 | 0.17 |
| 110920 | 15:06:37.75 | 37° 46.93' | 113° 54.40' | 1.4* | 2.6W | 17 | 182 | 41 | 0.42 |
| 110921 | 02:58:11.52 | 40° 52.80' | 111° 39.79' | 10.9 | 0.8 | 13 | 130 | 17 | 0.15 |
| 110921 | 04:54:32.52 | 41° 28.15' | 112° 59.82' | 7.0* | 0.5 | 7 | 240 | 39 | 0.11 |
| 110922 | 16:20:47.99 | 39° 36.91' | 110° 25.50' | 3.0 | 0.9 | 5 | 218 | 7 | 0.80 |
| 110923 | 02:33:05.74 | 37° 46.72' | 113° 55.40' | 5.2* | 1.7 | 11 | 215 | 43 | 0.28 |
| 110923 | 08:18:17.56 | 39° 39.24' | 110° 23.44' | 1.6 | 0.3 | 5 | 182 | 2 | 0.32 |
| 110924 | 06:17:57.50 | 37° 13.30' | 113° 12.20' | 17.0 | 1.4 | 12 | 79 | 17 | 0.26 |
| 110924 | 19:56:26.98 | 37° 34.51' | 113° 20.65' | 0.3* | 1.5 | 15 | 113 | 23 | 0.22 |
| 110926 | 09:51:58.20 | 37° 29.27' | 112° 25.06' | 8.4 | 1.6 | 16 | 72 | 11 | 0.27 |
| 110926 | 10:06:03.21 | 38° 40.86' | 112° 09.40' | 2.6* | 1.1 | 8 | 116 | 19 | 0.08 |
| 110927 | 06:31:39.80 | 40° 51.72' | 111° 37.29' | 8.7 | 0.3 | 8 | 125 | 16 | 0.15 |
| 110927 | 08:28:46.46 | 39° 28.37' | 111° 55.12' | 2.2 | 1.3 | 7 | 151 | 10 | 0.30 |
| 110927 | 16:49:11.64 | 37° 55.53' | 112° 01.46' | 6.7* | 1.5 | 9 | 116 | 19 | 0.20 |
| 110928 | 00:21:44.22 | 37° 54.46' | 112° 02.98' | 7.0* | 2.1W | 16 | 115 | 19 | 0.27 |
| 110928 | 00:53:50.82 | 37° 54.06' | 112° 02.98' | 4.4* | 2.0W | 18 | 115 | 20 | 0.28 |
| 110928 | 00:55:16.78 | 37° 53.73' | 112° 03.16' | 4.5* | 1.7 | 12 | 150 | 20 | 0.29 |
| 110928 | 02:33:09.46 | 37° 54.72' | 112° 02.31' | 7.6* | 1.6 | 11 | 116 | 19 | 0.29 |
| 110928 | 06:31:20.97 | 37° 54.58' | 112° 03.23' | 6.9* | 3.5W | 23 | 94 | 19 | 0.35 |

Table 2. Earthquakes in the Utah Region: July 1–September 30, 2011

| DATE | ORIGIN TIME | LATITUDE | LONGITUDE | DEPTH | MAG | NO | GAP | DMN | RMS |
|--------|-------------|------------|-------------|-------|------|----|-----|-----|------|
| 110928 | 06:34:59.62 | 37° 54.30' | 112° 03.28' | 13.0 | 1.8 | 9 | 156 | 19 | 0.15 |
| 110928 | 06:35:39.66 | 37° 54.79' | 112° 03.15' | 10.4 | 1.9 | 10 | 154 | 18 | 0.31 |
| 110928 | 06:44:08.24 | 37° 53.83' | 112° 02.56' | 2.4* | 1.2 | 10 | 150 | 20 | 0.30 |
| 110928 | 07:05:08.28 | 37° 54.31' | 112° 03.47' | 7.5* | 2.8W | 17 | 115 | 19 | 0.30 |
| 110928 | 08:21:48.16 | 37° 55.80' | 112° 01.51' | 7.0* | 1.0 | 10 | 115 | 19 | 0.21 |
| 110928 | 16:20:02.78 | 37° 55.43' | 112° 02.70' | 2.7* | 0.9 | 9 | 115 | 58 | 0.17 |
| 110928 | 23:36:36.25 | 36° 46.82' | 113° 37.93' | 5.7* | 1.7 | 9 | 187 | 43 | 0.10 |
| 110929 | 10:03:11.25 | 39° 29.03' | 111° 13.76' | 3.9* | 1.1 | 5 | 131 | 18 | 0.16 |
| 110929 | 22:43:27.61 | 38° 27.53' | 112° 11.30' | 2.2 | 1.1 | 9 | 130 | 6 | 0.07 |
| 110930 | 03:20:41.42 | 39° 39.20' | 110° 23.55' | 1.6 | 0.9 | 5 | 183 | 3 | 0.34 |
| 110930 | 03:35:03.57 | 39° 38.42' | 110° 24.11' | 2.2 | 1.2 | 7 | 141 | 4 | 0.43 |
| 110930 | 06:16:35.38 | 41° 51.07' | 112° 39.91' | 9.1 | 0.6 | 12 | 197 | 12 | 0.14 |
| 110930 | 09:25:21.63 | 41° 48.70' | 112° 23.43' | 8.8 | 0.5 | 10 | 119 | 13 | 0.21 |
| 110930 | 10:18:31.28 | 41° 39.72' | 111° 41.53' | 10.9 | 1.8 | 22 | 71 | 12 | 0.21 |
| 110930 | 23:28:19.03 | 38° 52.35' | 111° 30.18' | 17.1 | 1.1 | 10 | 73 | 12 | 0.15 |

number of earthquakes = 330

* indicates poor depth control

W indicates Wood-Anderson data used for magnitude calculation

Table 3
UNIVERSITY OF UTAH REGIONAL/URBAN SEISMIC NETWORK
Operating Seismograph Stations
September 30, 2011

| UURSN Code | Location | SEED Station | SEED Channel | No. of Channels | Network Code | Latitude | Longitude | Elevation (meters) | Sensor | Digitizer | Telemetry | Sponsor |
|------------|---|--------------|--------------|-----------------|--------------|------------|-------------|--------------------|-----------|-----------|-----------|---------------|
| 2272 | Eastwood Elementary School Salt Lake City, UT | 2272 | HN[ZEN] | 3 | NP | 40° 41.98' | 111° 47.62' | 1515 | EpiSensor | Basalt | Digital | NSMP, ANSS |
| 2285 | Liberty Park Salt Lake City, UT | 2285 | HN[ZEN] | 3 | NP | 40° 44.70' | 111° 52.49' | 1298 | EpiSensor | Basalt | Digital | NSMP, ANSS |
| 2286 | Roosevelt Elementary School Salt Lake City, UT | 2286 | HN[ZEN] | 3 | NP | 40° 42.08' | 111° 52.01' | 1314 | EpiSensor | Basalt | Digital | NSMP, ANSS |
| 7202 | Meadowbrook Golf Course Murray, UT | 7202 | HN[ZEN] | 3 | NP | 40° 40.93' | 111° 55.36' | 1293 | EpiSensor | Basalt | Digital | NSMP, ANSS |
| 7203 | Bonneville Golf Course Salt Lake City, UT | 7203 | HN[ZEN] | 3 | NP | 40° 44.81' | 111° 49.63' | 1457 | EpiSensor | Basalt | Digital | NSMP, ANSS |
| 7208 | SR 201/I-80 Bridge Array, Salt Lake City, UT | 7208 | EN[ZEN] | 3 | NP | 40° 43.38' | 111° 54.43' | 1291 | EpiSensor | K2 | Digital | NSMP, ANSS |
| 7212 | Annex Bldg., Weber State University, Ogden, UT | 7212 | HN[ZEN] | 3 | NP | 41° 11.75' | 111° 56.50' | 1422 | EpiSensor | K2 | Digital | NSMP, ANSS |
| 7223 | Dixie State College St. George, UT | 7223 | HN[ZEN] | 3 | NP | 37° 06.02' | 113° 33.94' | 815 | EpiSensor | Etna | Digital | NSMP, ANSS |
| 7224 | Southern Utah University Cedar City, UT | 7224 | HN[ZEN] | 3 | NP | 37° 40.35' | 113° 04.29' | 1782 | EpiSensor | Basalt | Digital | NSMP, ANSS |
| 7225 | City Maintenance Yard Beaver, UT | 7225 | HN[ZEN] | 3 | NP | 38° 17.01' | 112° 38.32' | 1808 | EpiSensor | Etna | Digital | NSMP, ANSS |
| 7226 | UDOT IT Radio Shop Richfield, UT | 7226 | HN[ZEN] | 3 | NP | 38° 45.43' | 112° 05.26' | 1616 | FBA23 | Basalt | Digital | NSMP, ANSS |
| 7227 | City Maintenance Yard Gunnison, UT | 7227 | HN[ZEN] | 3 | NP | 39° 09.35' | 111° 49.17' | 1568 | EpiSensor | Basalt | Digital | NSMP, ANSS |
| 7228 | Juab School District Nephi, UT | 7228 | HN[ZEN] | 3 | NP | 39° 43.27' | 111° 49.49' | 1576 | EpiSensor | Basalt | Digital | NSMP, ANSS |

| UURSN Code | Location | SEED Station | SEED Channel | No. of Channels | Network Code | Latitude | Longitude | Elevation (meters) | Sensor | Digitizer | Telemetry | Sponsor |
|------------|---|--------------|--------------|-----------------|--------------|------------|-------------|--------------------|-----------------|--------------|-----------|---------------|
| 7229 | City Maintenance Shop Santaquin, UT | 7229 | HN[ZEN] | 3 | NP | 39° 58.35' | 111° 47.58' | 1520 | EpiSensor | Etna | Digital | NSMP, ANSS |
| 7232 | City Parks & Recreation Office Tremonton, UT | 7232 | HN[ZEN] | 3 | NP | 41° 43.13' | 112° 10.91' | 1320 | EpiSensor | Etna | Digital | NSMP, ANSS |
| AHI | Auburn, ID | AHID | BH[ZEN] | 3 | US | 42° 45.92' | 111° 06.02' | 1960 | * | * | Digital | USGS |
| ALP | Alpine Fire Station, Alpine, UT | ALP | EN[ZEN] | 3 | UU | 40° 27.26' | 111° 46.61' | 1510 | EpiSensor | K2 | Digital | ANSS |
| ALT | Alta City Offices, Alta, UT | ALT | EN[ZEN] | 3 | UU | 40° 35.42' | 111° 38.25' | 2635 | Applied Mems | ANSS-130 | Digital | ANSS |
| AMF | Tri-Cities Golf Course American Fork, UT | AMF | EN[ZEN] | 3 | UU | 40° 24.11' | 111° 47.27' | 1445 | EpiSensor | K2 | Digital | ANSS |
| ANMO | Albuquerque, NM | ANMO | BH[ZEN] | 3 | IU | 34° 57.01' | 106° 27.61' | 1743 | * | * | Digital | USGS |
| ARGU | Argyle Ridge, UT | ARGU | EHZ | 1 | UU | 39° 49.37' | 110° 32.62' | 2828 | S13 | PSN | Analog | Utah |
| ARUT | Antelope Range, UT | ARUT | EHZ | 1 | UU | 37° 47.28' | 113° 26.42' | 1646 | L4C | PSN | Analog | Utah |
| AVE | Avenues, Salt Lake City, UT | AVE | EN[ZEN] | 3 | UU | 40° 46.47' | 111° 51.83' | 1387 | Applied Mems | ANSS-130 | Digital | ANSS |
| BCE | Book Cliffs East, UT | BCE | EHZ | 4 | UU | 39° 36.79' | 110° 24.51' | 2666 | L4C | K2 | Digital | Utah |
| | | | EN[ZEN] | | | | | | EpiSensor | | | |
| BCS | Brigham City Maintenance Shop Brigham City, UT | BCS | EN[ZEN] | 3 | UU | 41° 30.71' | 112° 01.98' | 1303 | EpiSensor | K2 | Digital | ANSS |
| BCU | Brigham City, UT | BCU | EN[ZEN] | 3 | UU | 41° 30.74' | 111° 58.93' | 1676 | EpiSensor | K2 | Digital | ANSS |
| BCW | Book Cliffs West, UT | BCW | EHZ | 4 | UU | 39° 43.82' | 110° 44.55' | 2614 | L4C | K2 | Digital | Utah |
| | | | EN[ZEN] | | | | | | EpiSensor | | | |
| BEI | Bear River Range, ID | BEI | EHZ | 1 | UU | 42° 07.00' | 111° 46.94' | 1859 | L4C | PSN | Analog | USGS |
| BES | Bates Elementary School Ogden, UT | BES | EN[ZEN] | 3 | UU | 41° 19.10' | 111° 57.26' | 1455 | EpiSensor | K2 | Digital | ANSS |
| BGMZ | Barton Gulch, MT | BGMT | EHZ | 1 | MB | 45° 14.00' | 112° 02.43' | 2172 | * | * | Analog | MBMT |
| BGU | Big Grassy Mountain, UT | BGU | EN[ZEN] | 3 | UU | 40° 55.53' | 113° 01.79' | 1640 | EpiSensor | Q330 | Digital | ANSS |
| | | | HH[ZEN] | 3 | | | | | Trillium 120 | | | |
| BHU | Blowhard Mountain, UT | BHU | EH[ZEN] | 3 | UU | 37° 35.55' | 112° 51.42' | 3230 | S13 | PSN | Analog | Utah |
| BHUT | Beaver High School, UT | BHUT | EN[ZEN] | 3 | UU | 38° 16.61' | 112° 38.42' | 1799 | PA-23 | SMART- 24 | Digital | Utah |
| BMN | Battle Mountain, NM | BMN | BHZ | 1 | NN | 40° 25.89' | 117° 13.31' | 1594 | * | * | Digital | UNR |
| BMUT | Black Mountain, UT | BMUT | EHZ | 1 | UU | 41° 57.49' | 111° 14.05' | 2243 | S13 | PSN | Analog | USGS |
| BON | Boundary Peak, NV | BONR | SHZ | 1 | NN | 37° 57.31' | 118° 18.10' | 2582 | * | * | Digital | UNR |

| UURSN Code | Location | SEED Station | SEED Channel | No. of Channels | Network Code | Latitude | Longitude | Elevation (meters) | Sensor | Digitizer | Telemetry | Sponsor |
|------------|--|--------------|--------------|-----------------|--------------|------------|-------------|--------------------|--------------|-----------|-----------|------------|
| BOZ | Bozeman, MT | BOZ | BH[ZEN] | 3 | US | 45° 38.82' | 111° 37.78' | 1589 | * | * | Digital | USGS |
| BRPU | Butcher Ranch, Price, UT | BRPU | HH[ZEN] | 3 | UU | 39° 37.67' | 110° 14.56' | 1687 | Trillium 240 | Q330 | Digital | Utah |
| | | | EN[ZEN] | 3 | | | | | EpiSensor | | | |
| BSS | Butlerville Substation Salt Lake City, UT | BSS | EN[ZEN] | 3 | UU | 40° 37.45' | 111° 49.37' | 1411 | EpiSensor | K2 | Digital | ANSS |
| BTU | Barney Top, UT | BTU | EHZ | 1 | UU | 37° 45.34' | 111° 52.46' | 3235 | S13 | PSN | Analog | Utah |
| BW0 | Boulder, WY | BW06 | BH[ZEN] | 3 | US | 42° 46.00' | 109° 33.50' | 2224 | * | * | Digital | USGS |
| BYP | Brigham Young Park Salt Lake City, UT | BYP | EN[ZEN] | 3 | UU | 40° 46.26' | 111° 53.23' | 1323 | Applied Mems | ANSS-130 | Digital | ANSS |
| BZMZ | Bozeman Pass, MT | BZMT | EHZ | 1 | MB | 45° 38.89' | 110° 47.80' | 1905 | * | * | Analog | MBMT |
| CAPU | Capitol, Salt Lake City, UT | CAP | EN[ZEN] | 3 | UU | 40° 46.71' | 111° 53.40' | 1384 | Applied Mems | ANSS-130 | Digital | ANSS |
| CCPU | Cedar City Park, UT | CCPU | EN[ZEN] | 3 | UU | 38° 16.61' | 112° 38.42' | 1799 | PA-23 | SMART-24 | Digital | Utah |
| CCUT | Cedar City, UT | CCUT | HH[ZEN] | 3 | UU | 37° 33.04' | 113° 21.77' | 2124 | STS-2 | ANSS-130 | Digital | USGS |
| | | | EN[ZEN] | 3 | | | | | Applied Mems | | | |
| CFS | Copperton Fire Station Copperton, UT | CFS | EN[ZEN] | 3 | UU | 40° 33.96' | 112° 05.61' | 1654 | EpiSensor | K2 | Digital | ANSS |
| CHS | Copper Hills High School, West Jordan, UT | CHS | EN[ZEN] | 3 | UU | 40° 35.68' | 112° 01.03' | 1460 | Applied Mems | ANSS-130 | Digital | ANSS |
| COM | Craters of the Moon, ID | COMI | EHZ | 1 | IE | 43° 27.72' | 113° 35.64' | 1890 | * | * | Digital | INL |
| COY | Coyote Canyon, Tooele Valley, UT | COY | EN[ZEN] | 3 | UU | 40° 39.56' | 112° 14.34' | 1572 | Applied Mems | ANSS-130 | Digital | ANSS |
| CRLU | Curley Ranch, La Sal, UT | CRLU | EHZ | 1 | UU | 38° 17.50' | 109° 15.64' | 2035 | L4C | Basalt | Digital | Utah, USGS |
| | | | EN[ZEN] | 3 | | | | | Episensor | | | |
| CRMZ | Chrome Mountain, MT | CRMT | EHZ | 1 | MB | 45° 27.35' | 110° 08.41' | 2941 | * | * | Analog | MBMT |
| CTU | Camp Tracy, UT | CTU | HH[ZEN] | 3 | UU | 40° 41.55' | 111° 45.02' | 1731 | 40T | 72A-07 | Digital | USGS |
| CVH | Cedar City, Canyon View High School, UT | CVH | EN[ZEN] | 3 | UU | 37° 42.91' | 113° 03.85' | 1724 | PA-23 | SMART-24 | Digital | Utah |
| CVRU | Castle Valley Ranch, Emery, UT | CVRU | HH[ZEN] | 3 | UU | 38° 55.06' | 111° 10.30' | 1912 | STS-2 | Q330 | Digital | Utah |
| | | | EN[ZEN] | 3 | | | | | EpiSensor | | | |
| CWR | Coldwater Ranch, Paradise, UT | CWR | EN[ZEN] | 3 | UU | 41° 34.90' | 111° 46.89' | 1837 | Applied Mems | ANSS-130 | Digital | ANSS |

| UURSN Code | Location | SEED Station | SEED Channel | No. of Channels | Network Code | Latitude | Longitude | Elevation (meters) | Sensor | Digitizer | Telemetry | Sponsor |
|------------|--|--------------|--------------|-----------------|--------------|------------|-------------|--------------------|--------------|-----------|-----------|------------|
| CWU | Camp Williams, UT | CWU | EHZ | 1 | UU | 40° 26.75' | 112° 06.13' | 1945 | L4C | PSN | Analog | USGS |
| DAU | Daniels Canyon, UT | DAU | EHZ | 1 | UU | 40° 24.75' | 111° 15.35' | 2771 | S13 | PSN | Analog | USGS |
| DBD | Des Bee Dove, UT | DBD | EHZ | 1 | UU | 39° 18.82' | 111° 05.55' | 2265 | L4C | PSN | Analog | Utah |
| DCM | Dugout Coal Mine, UT | DCM | EHZ | 1 | UU | 39° 41.70' | 110° 35.00' | 2537 | L4C | Basalt | Digital | Utah |
| | | | EN[ZEN] | 3 | | | | | EpiSensor | | | |
| DCU | Deer Creek Reservoir, UT | DCU | EHZ | 1 | UU | 40° 24.82' | 111° 31.61' | 1829 | L4C | PSN | Analog | USGS |
| DOT | Utah Dept. of Transportation Region II Offices, Salt Lake City, UT | DOT | EN[ZEN] | 3 | UU | 40° 43.61' | 111° 57.65' | 1282 | Applied Mems | ANSS-130 | Digital | ANSS |
| DUG | Dugway, UT | DUG | BH[ZEN] | 3 | US | 40° 11.70' | 112° 48.80' | 1477 | * | * | Digital | USGS |
| | | | EH[ZEN] | 6 | UU | | | | S13 | PSN | Analog | Utah, USGS |
| | | | EL[ZEN] | | | | | | | | | |
| DWU | Dry Willow, UT | DWU | EHZ | 1 | UU | 38° 06.32' | 112° 59.85' | 2270 | S13 | PSN | Analog | Utah |
| ECR | Eagle Creek, ID | ECRI | EHZ | 1 | IE | 43° 03.24' | 111° 22.26' | 2086 | * | * | Digital | INL |
| EKU | East Kanab, UT | EKU | EHZ | 1 | UU | 37° 04.48' | 112° 29.81' | 1829 | S13 | PSN | Analog | Utah |
| ELE | East Layton Elementary School, East Layton, UT | ELE | EN[ZEN] | 3 | UU | 41° 04.84' | 111° 55.09' | 1444 | Applied Mems | ANSS-130 | Digital | ANSS |
| ELK | Elko, NV | ELK | BH[ZEN] | 3 | US | 40° 44.69' | 115° 14.33' | 2210 | * | * | Digital | USGS |
| ELU | Electric Lake, UT | ELU | EHZ | 1 | UU | 39° 38.41' | 111° 12.23' | 2970 | L4C | PSN | Analog | Utah |
| EMF | Eagle Mountain Gas Tap, UT | EMF | EN[ZEN] | 3 | UU | 40° 16.89' | 111° 59.92' | 1487 | Applied Mems | ANSS-130 | Digital | ANSS |
| EMU | Emma Park, UT | EMU | EH[ZEN] | 4 | UU | 39° 48.84' | 110° 48.92' | 2268 | S13 | PSN | Analog | USGS |
| | | | ELZ | | | | | | | | | |
| | | | EN[ZEN] | 3 | | | | | FBA23 | K2 | Digital | Utah |
| EPU | East Promontory, UT | EPU | EHZ | 1 | UU | 41° 23.49' | 112° 24.53' | 1436 | L4C | PSN | Analog | USGS |
| ETW | Elwood Town Hall, Elwood, UT | ETW | EN[ZEN] | 3 | UU | 41° 40.15' | 112° 08.53' | 1305 | Applied Mems | ANSS-130 | Digital | ANSS |
| FLU | Fool's Peak, UT | FLU | EHZ | 1 | UU | 39° 22.69' | 112° 10.29' | 1951 | 18300 | PSN | Analog | USGS |
| | | | EHZ | 1 | | | | | EpiSensor | Basalt | Digital | |
| | | | EN[ZEN] | 3 | | | | | | | | |
| FPU | Francis Peak, UT | FPU | EHZ | 1 | UU | 41° 01.58' | 111° 50.21' | 2816 | L4C | PSN | Analog | USGS |
| FSU | Fish Springs, UT | FSU | EHZ | 1 | UU | 39° 43.35' | 113° 23.48' | 1487 | 18300 | PSN | Analog | Utah |
| FTT | Fire Training Tower, Magna, UT | FTT | EN[ZEN] | 3 | UU | 40° 41.16' | 112° 04.99' | 1381 | Applied Mems | ANSS-130 | Digital | ANSS |
| FLWY | Flagg Ranch, WY | FLWY | BH[ZEN] | 3 | IW | 44° 04.96' | 110° 41.96' | 2078 | 3ESP | RT-130 | Digital | ANSS |

| UURSN Code | Location | SEED Station | SEED Channel | No. of Channels | Network Code | Latitude | Longitude | Elevation (meters) | Sensor | Digitizer | Telemetry | Sponsor |
|------------|---|--------------|----------------|-----------------|--------------|------------|-------------|--------------------|------------------------|-----------------|-------------------|--------------|
| GBI | Big Grassy Butte, ID | GBI | EHZ | 1 | IE | 43° 59.22' | 112° 03.78' | 1541 | * | * | Digital | INL |
| GCN | Grand Canyon, AZ | GCN | EHZ | 1 | AR | 36° 02.64' | 112° 07.68' | 2294 | * | * | Analog | NAU |
| GMO | Grantsville Maintenance Office, Grantsville, UT | GMO | EN[ZEN] | 3 | UU | 40° 36.04' | 112° 28.48' | 1320 | Applied Mems | ANSS-130 | Digital | ANSS |
| GMU | Granite Mountain, UT | GMU | EH[ZEN] ELZ | 4 | UU | 40° 34.53' | 111° 45.79' | 1829 | S13 | PSN | Analog | USGS |
| GMV | Granite Mountain Vault Sandy, UT | GMV | EN[ZEN] | 3 | UU | 40° 34.40' | 111° 45.79' | 1829 | EpiSensor | K2 | Digital | ANSS |
| GRR | Grays Lake, ID | GRRRI | EHZ | 1 | IE | 42° 56.28' | 111° 25.32' | 2207 | * | * | Digital | INL |
| GZU | Grizzly Peak, UT | GZU | EH[ZEN] ELZ | 4 | UU | 41° 25.53' | 111° 58.50' | 2646 | S13 | PSN | Analog | USGS |
| HCSU | Hobble Creek, Springville, UT | HCSU | EHZ EN[ZEN] | 1 3 | UU | 40° 12.40' | 111° 30.14' | 1789 | L4C EpiSensor | Basalt | Digital | Utah, USGS |
| HDU | Hyde Park, UT | HDU | EHZ | 1 | UU | 41° 48.18' | 111° 45.99' | 1807 | L4C | PSN | Analog | USGS |
| HEB | Heber, UT | HEB | EHZ | 1 | UU | 40° 30.09' | 111° 20.15' | 1925 | S13 | PSN | Analog | Utah |
| HER | Herriman Fire Station Herriman, UT | HER | EN[ZEN] | 3 | UU | 40° 30.94' | 112° 01.85' | 1502 | EpiSensor | K2 | Digital | ANSS |
| HES | Hooper Elementary School Hooper, UT | HES | EN[ZEN] | 3 | UU | 41° 09.89' | 112° 07.30' | 1292 | EpiSensor | K2 | Digital | ANSS |
| HFSU | Holladay Fire Station Holladay, UT | HFSU | EN[ZEN] | 3 | UU | 40° 40.21' | 111° 49.54' | 1344 | EpiSensor | K2 | Digital | ANSS |
| HHA | Hell's Half Acre, ID | HHAI | EHZ | 1 | IE | 43° 17.70' | 112° 22.74' | 1371 | * | * | Digital | INL |
| HHS | Hurricane High School, UT | HHS | EN[ZEN] | 3 | UU | 37° 10.43' | 113° 17.74' | 987 | EpiSensor | Etna | Digital | Utah |
| HLI | Hailey, ID | HLID | BH[ZEN] | 3 | US | 43° 33.75' | 114° 24.83' | 1772 | * | * | Digital | USGS |
| HLJZ | Hailstone, UT | HLJ | EHZ EN[ZEN] | 1 3 | UU | 40° 36.64' | 111° 24.05' | 1931 | S13 FBA23 | PSN K2 | Analog Digital | Utah |
| HMU | Henry Mountain, UT | HMU | HH[ZEN] | 3 | UU | 37° 56.28' | 110° 44.51' | 2430 | 3T | 72A-07 | Digital | Utah |
| HON | Honeyville, UT | HON | EN[ZEN] | 3 | UU | 41° 36.97' | 112° 03.05' | 1528 | Applied Mems | ANSS-130 | Digital | ANSS |
| HONU | | HONU | EHZ | 1 | | | | | L4C | PSN | Analog | USGS |
| HRU | Hogsback Ridge, UT | HRU | EHZ EN[ZEN] | 1 3 | UU | 40° 47.67' | 111° 53.14' | 1620 | Ranger Applied Mems | PSN ANSS-130 | Analog Digital | USGS ANSS |

| UURSN Code | Location | SEED Station | SEED Channel | No. of Channels | Network Code | Latitude | Longitude | Elevation (meters) | Sensor | Digitizer | Telemetry | Sponsor |
|------------|---|--------------|--------------|-----------------|--------------|------------|-------------|--------------------|--------------|-----------|-----------|------------------|
| HTU | Hoyt, UT | HTU | EHZ | 1 | UU | 40° 40.52' | 111° 13.21' | 2576 | L4C | PSN | Analog | USGS |
| | | | EHZ | 1 | | | | | | Basalt | Digital | |
| | | | EN[ZEN] | 3 | | | | | Episensor | | | |
| HVU | Hansel Valley, UT | HVU | HH[ZEN] | 3 | UU | 41° 46.78' | 112° 46.50' | 1609 | Trillium 120 | Q330 | Digital | USGS |
| | | | EN[ZEN] | 3 | | | | | EpiSensor | | | |
| HWU | Hardware Ranch, UT | HWUT | BH[ZEN] | 3 | US | 41° 36.41' | 111° 33.91' | 1830 | * | * | Digital | USGS |
| IAE | Cedar City, Iron County Adult Education, UT | IAE | EN[ZEN] | 3 | UU | 37°39.91' | 113° 40.02' | 1807 | EpiSensor | Etna | Digital | Utah |
| ICF | International Center Fire Station, Salt Lake City, UT | ICF | EN[ZEN] | 3 | UU | 40° 46.69' | 112° 01.72' | 1281 | EpiSensor | K2 | Digital | ANSS |
| ICU | Indian Springs Canyon, UT | ICU | EHZ | 1 | UU | 37° 08.98' | 113° 55.41' | 1451 | S13 | PSN | Analog | Utah |
| IMU | Iron Mountain, UT | IMU | EHZ | 1 | UU | 38° 37.99' | 113° 09.50' | 1833 | L4C | PSN | Analog | Utah |
| IMW | Indian Meadows, WY | IMW | BH[ZEN] | 3 | IW | 43° 53.58' | 110° 56.58' | 2670 | 3ESP | RT-130 | Digital | ANSS |
| JLU | Jordanelle, UT | JLU | EN[ZEN] | 3 | UU | 40° 36.12' | 111° 27.00' | 2285 | EpiSensor | ANSS-130 | Digital | ANSS |
| | | | HH[ZEN] | 3 | | | | | 3ESP | | | |
| JRP | Jordan River State Park Salt Lake City, UT | JRP | EN[ZEN] | 3 | UU | 40° 49.54' | 111° 56.66' | 1284 | EpiSensor | K2 | Digital | ANSS |
| KEUT | Kanab Elementary School, UT | KEUT | EN[ZEN] | 3 | UU | 37° 03.02' | 112° 31.76' | 1514 | PA-23 | SMART-24 | Digital | Utah |
| KLJ | Keetley, UT | KLJ | EHZ | 1 | UU | 40° 37.85' | 111° 24.30' | 1992 | S13 | PSN | Analog | Utah |
| KNB | Kanab, UT | KNB | HH[ZEN] | 3 | UU | 37° 01.00' | 112° 49.34' | 1715 | 3T | ANSS-130 | Digital | Utah. ANSS, LLNL |
| | | | EN[ZEN] | 3 | | | | | Episensor | | | |
| LCMT | Little Creek Mountain, UT | LCMT | HH[ZEN] | 3 | UU | 37° 00.71' | 113° 14.63' | 1411 | 3T | SMART-24 | Digital | Utah |
| | | | EN[ZEN] | 3 | | | | | PA-23 | | | |
| LCU | Little Cottonwood, UT | LCU | EN[ZEN] | 3 | UU | 40° 34.41' | 111° 47.91' | 1571 | Applied Mems | K2 | Digital | ANSS |
| LDJ | Lady, UT | LDJ | EHZ | 1 | UU | 40° 34.89' | 111° 24.52' | 2217 | S13 | PSN | Analog | Utah |
| LEVU | Levan, UT | LEVU | EHZ | 1 | UU | 39° 30.39' | 111° 48.88' | 1996 | L4C | PSN | Analog | USGS |
| | | | EHZ | 1 | | | | | | Basalt | Digital | |
| | | | EN[ZEN] | 3 | | | | | EpiSensor | | | |
| LGC | Lakeside Golf Course Bountiful, UT | LGC | EN[ZEN] | 3 | UU | 40° 54.04' | 111° 54.51' | 1292 | EpiSensor | K2 | Digital | ANSS |

| UURSN Code | Location | SEED Station | SEED Channel | No. of Channels | Network Code | Latitude | Longitude | Elevation (meters) | Sensor | Digitizer | Telemetry | Sponsor |
|------------|--|--------------|--------------|-----------------|--------------|------------|-------------|--------------------|--------------|-----------|-----------|---------|
| LHUT | Little Humpy Peak, UT | LHUT | EHZ | 1 | UU | 40° 53.49' | 110° 59.78' | 3084 | S13 | PSN | Analog | Utah |
| LKC | Lee Kay Hunter Education Center Magna, UT | LKC | EN[ZEN] | 3 | UU | 40° 43.62' | 112° 02.14' | 1289 | EpiSensor | K2 | Digital | ANSS |
| LKW | Lake, WY | LKWY | BH[ZEN] | 3 | US | 44° 33.91' | 110° 24.00' | 2424 | * | * | Digital | USGS |
| LMU | Lake Mountain, UT | LMU | EN[ZEN] | 3 | UU | 40° 18.91' | 111° 55.92' | 1593 | EpiSensor | K2 | Digital | ANSS |
| LOHW | National Elk Refuge, WY | LOHW | BH[ZEN] | 3 | IW | 43° 36.76' | 110° 36.30' | 2245 | 3ESP | RT-130 | Digital | ANSS |
| LRG | Logan River Golf Course | LRG | EN[ZEN] | 3 | UU | 41° 42.82' | 111° 51.08' | 1362 | Applied Mems | ANSS-130 | Digital | ANSS |
| LSU | Lake Shores, UT | LSU | EN[ZEN] | 3 | UU | 40° 07.94' | 111° 43.80' | 1375 | EpiSensor | K2 | Digital | ANSS |
| LTU | Little Mountain, UT | LTU | EHZ | 1 | UU | 41° 35.51' | 112° 14.83' | 1585 | L4C | PSN | Analog | USGS |
| | | | EHZ | 1 | | | | | EpiSensor | Basalt | Digital | |
| | | | EN[ZEN] | 3 | | | | | | | | |
| MAB | Mapleton Ambulance Building Mapleton, UT | MAB | EN[ZEN] | 3 | UU | 40° 07.85' | 111° 34.67' | 1440 | EpiSensor | K2 | Digital | ANSS |
| MBUT | Moab, UT | MBUT | EN[ZEN] | 3 | UU | 38° 32.00' | 109° 30.59' | 1376 | FBA23 | Etna | Digital | Utah |
| MCID | Moose Creek, ID | MCID | EHZ | 1 | WY | 44° 11.45' | 111° 11.03' | 2137 | L4C | PSN | Analog | USGS |
| MCU | Monte Cristo Peak, UT | MCU | EHZ | 1 | UU | 41° 27.70' | 111° 30.45' | 2664 | 18300 | PSN | Analog | USGS |
| MGU | Meadow Brook Golf Course Salt Lake City, UT | MGU | EHZ | 1 | UU | 40° 40.89' | 111° 55.09' | 1291 | Ranger | PSN | Analog | USGS |
| MHD | Mile High Drive, UT | MHD | EHZ | 1 | UU | 40° 39.64' | 111° 48.05' | 1597 | Ranger | PSN | Analog | USGS |
| | | | EHZ | 1 | | | | | EpiSensor | Basalt | Digital | |
| | | | EN[ZEN] | 3 | | | | | | | | |
| MID | Middle Canyon, UT | MID | EN[ZEN] | 3 | UU | 40° 31.04' | 112° 15.28' | 1722 | Applied Mems | ANSS-130 | Digital | ANSS |
| MLI | Malad Range, ID | MLI | EHZ | 1 | UU | 42° 01.61' | 112° 07.53' | 1896 | L4C | PSN | Analog | USGS |
| | | | EHZ | 1 | | | | | EpiSensor | Basalt | Digital | |
| | | | EN[ZEN] | 3 | | | | | | | | |
| MMU | Miners Mountain, UT | MMU | EHZ | 1 | UU | 38° 11.57' | 111° 17.66' | 2387 | S13 | PSN | Analog | Utah |
| MOMZ | Monida, MT | MOMT | EHZ | 1 | MB | 44° 35.60' | 112° 23.66' | 2220 | * | * | Analog | MBMT |
| MOR | Morgan, UT | MOR | EN[ZEN] | 3 | UU | 41° 02.77' | 111° 39.94' | 1633 | Applied Mems | ANSS-130 | Digital | ANSS |
| MOUT | Mount Ogden, UT | MOUT | EHZ | 1 | UU | 41° 11.94' | 111° 52.73' | 2743 | S13 | PSN | Analog | USGS |

| UURSN Code | Location | SEED Station | SEED Channel | No. of Channels | Network Code | Latitude | Longitude | Elevation (meters) | Sensor | Digitizer | Telemetry | Sponsor |
|------------|--|--------------|--------------|-----------------|--------------|------------|-------------|--------------------|--------------|-----------|-----------|---------|
| MPU | Maple Canyon, UT | MPU | EN[ZEN] | 3 | UU | 40° 00.93' | 111° 38.00' | 1909 | EpiSensor | K2 | Digital | ANSS |
| | | | HH[ZEN] | 3 | | | | | 3ESP | ANSS-130 | Digital | USGS |
| MSU | Marysville, UT | MSU | EHZ | 1 | UU | 38° 30.74' | 112° 10.63' | 2105 | 18300 | PSN | Analog | Utah |
| MTLO | Mt. Logan, AZ | MTL | EHZ | 1 | AR | 36° 21.18' | 113° 11.94' | 2418 | * | * | Analog | NAU |
| MTPU | Mt. Pierson, UT | MTPU | HH[ZEN] | 3 | UU | 38° 02.49' | 112° 11.06' | 3112 | Trillium 120 | Q330 | Digital | Utah |
| | | | EN[ZEN] | 3 | | | | | EpiSensor | | | |
| MTUT | Morton Thiokol, UT | MTUT | EHZ | 1 | UU | 41° 42.55' | 112° 27.28' | 1373 | L4C | PSN | Analog | USGS |
| MVCO | Mesa Verde, CO | MVCO | BH[ZEN] | 3 | US | 37° 12.62' | 108° 29.92' | 2170 | STS-2 | Q330 | Digital | ANSS |
| MVU | Marysville, UT | MVU | BH[ZEN] | 3 | LB | 38° 30.22' | 112° 12.74' | 2240 | * | * | Digital | Sandia |
| NAI | North Antelope Island, UT | NAI | EN[ZEN] | 3 | UU | 41° 00.97' | 112° 13.68' | 1472 | EpiSensor | K2 | Digital | ANSS |
| NAIU | | NAIU | EHZ | 1 | | | | | L4C | PSN | Analog | USGS |
| NLU | North Lily Mine, UT | NLU | EN[ZEN] | 3 | UU | 39° 57.29' | 112° 04.50' | 2036 | Episensor | 72A-08 | Digital | ANSS |
| | | | HH[ZEN] | 3 | | | | | 3ESP | | | |
| NMU | North Mineral Mountain, UT | NMU | EH[ZEN] | 4 | UU | 38° 30.99' | 112° 51.00' | 1853 | S13 | PSN | Analog | Utah |
| | | | ELZ | | | | | | | | | |
| NOQ | North Oquirrh Mountains, UT | NOQ | EN[ZEN] | 3 | UU | 40° 39.16' | 112° 07.26' | 1628 | EpiSensor | K2 | Digital | ANSS |
| | | | HH[ZEN] | 3 | | | | | Trillium 120 | ANSS-130 | Digital | USGS |
| NPI | North Pocatello, ID | NPI | EHZ | 1 | UU | 42° 08.84' | 112° 31.10' | 1640 | L4C | PSN | Analog | USGS |
| | | | EHZ | 1 | | | | | | Basalt | Digital | |
| | | | EN[ZEN] | 3 | | | | | | EpiSensor | | |
| OCP | Orem City Park, Orem, UT | OCP | EN[ZEN] | 3 | UU | 40° 17.87' | 111° 41.44' | 1464 | EpiSensor | K2 | Digital | ANSS |
| OF2 | Ogden Fire Station ° 2 Ogden, UT | OF2 | EN[ZEN] | 3 | UU | 41° 13.70' | 111° 56.92' | 1358 | EpiSensor | K2 | Digital | ANSS |
| OPS | Ogden Public Safety Building, Ogden, UT | OPS | EN[ZEN] | 3 | UU | 41° 13.72' | 111° 58.54' | 1317 | Applied Mems | ANSS-130 | Digital | ANSS |
| OSS | Oquirrh Sub Station, UT | OSS | EN[ZEN] | 3 | UU | 40° 33.77' | 112° 01.61' | 1503 | Applied Mems | ANSS-130 | Digital | ANSS |
| OWUT | Old Woman Plateau, UT | OWUT | EHZ | 1 | UU | 38° 46.80' | 111° 25.42' | 2568 | L4C | PSN | Analog | Utah |
| P03 | Wild Steer, Paradox Basin, CO | PV03 | EHZ | 1 | RE | 38° 15.26' | 108° 50.88' | 1975 | * | * | Analog | USBR |
| P15 | Potato Mountain Paradox Basin, CO | PV15 | EHZ | 1 | RE | 38° 20.51' | 108° 28.86' | 2280 | * | * | Analog | USBR |

| UURSN Code | Location | SEED Station | SEED Channel | No. of Channels | Network Code | Latitude | Longitude | Elevation (meters) | Sensor | Digitizer | Telemetry | Sponsor |
|------------|---|--------------|--------------|-----------------|--------------|------------|-------------|--------------------|--------------|-----------|-----------|------------|
| PCCW | Pine Creek, Cokeville, WY | PCCW | EHZ | 1 | UU | 42° 05.97' | 110° 52.36' | 1996 | L4C | Basalt | Digital | Utah, USGS |
| | | | EN[ZEN] | 3 | | | | | EpiSensor | | | |
| PCL | Plain City Landfill Plain City, UT | PCL | EN[ZEN] | 3 | UU | 41° 18.60' | 112° 06.00' | 1290 | Applied Mems | ANSS-130 | Digital | ANSS |
| PCR | Park City Recreation Center Park City, UT | PCR | EN[ZEN] | 3 | UU | 40° 39.25' | 111° 30.19' | 2100 | EpiSensor | K2 | Digital | ANSS |
| PEUT | Richfield, Pahvant Elementary School, UT | PEUT | EN[ZEN] | 3 | UU | 38° 46.55' | 112° 05.32' | 1644 | PA-23 | SMART-24 | Digital | Utah |
| PGAZ | Page, AZ | PGA | EHZ | 1 | AR | 36° 54.34' | 111° 16.86' | 1272 | * | * | Analog | NAU |
| PGC | Pleasant Grove Creek, UT | PGC | EN[ZEN] | 3 | UU | 40° 22.71' | 111° 42.62' | 1707 | EpiSensor | K2 | Digital | ANSS |
| PKCU | Pink Cliffs, UT | PKCU | HH[ZEN] | 3 | UU | 37° 26.63' | 112° 18.66' | 2834 | Trillium 120 | SMART-24 | Digital | Utah |
| | | | EN[ZEN] | 3 | | | | | PA-23 | | | |
| PNSU | Preston Nutter Ranch, Sunnyside, UT | PNSU | HH[ZEN] | 3 | UU | 39° 28.38' | 110° 44.40' | 2743 | Trillium 240 | Q330 | Digital | Utah |
| PRN | Pahroc, Range, NV | PRN | SHZ | 1 | NN | 37° 24.40' | 115° 03.05' | 1402 | * | * | Digital | UNR |
| PSUT | Pine Spring, UT | PSUT | HH[ZEN] | 3 | UU | 38° 32.02' | 113° 51.28' | 1999 | Trillium 120 | Q330 | Digital | Utah |
| | | | EN[ZEN] | 3 | | | | | EpiSensor | | | |
| PTI | Pocatello, ID | PTI | EHZ | 1 | IE | 42° 52.20' | 112° 22.21' | 1670 | * | * | Digital | INL |
| PTU | Portage, UT | PTU | EHZ | 1 | UU | 41° 55.76' | 112° 19.48' | 2192 | L4C | PSN | Analog | USGS |
| | | | EHZ | 1 | | | | | EpiSensor | Basalt | Digital | |
| | | | EN[ZEN] | 3 | | | | | | | | |
| QLMZ | Earthquake Lake, MT | QLMT | EHZ | 1 | MB | 44° 49.84' | 111° 25.80' | 2064 | * | * | Analog | MBMT |
| RBUZ | Red Butte Canyon, UT | RBU | EHZ | 1 | UU | 40° 46.85' | 111° 48.50' | 1676 | L4C | PSN | Analog | USGS |
| | | | EHZ | 1 | | | | | EpiSensor | Basalt | Digital | |
| | | | EN[ZEN] | 3 | | | | | | | | |
| RCJZ | Ross Creek, UT | RCJ | EHZ | 1 | UU | 40° 39.51' | 111° 26.36' | 2090 | S13 | PSN | Analog | Utah |
| RDMU | Red Mountain, UT | RDMU | HH[ZEN] | 3 | UU | 40° 34.25' | 109° 34.17' | 2087 | Trillium 120 | SMART-24 | Digital | Utah |
| | | | EN[ZEN] | 3 | | | | | PA-23 | | | |
| REDW | Red-Top Meadows, WY | REDW | BH[ZEN] | 3 | IW | 43° 21.74' | 110° 51.18' | 2322 | 3ESP | RT-130 | Digital | ANSS |
| REUT | Washington Fields, Riverside Elementary School, UT | REUT | EN[ZEN] | 3 | UU | 37° 05.86' | 113° 31.16' | 791 | PA-23 | SMART-24 | Digital | Utah |
| RIV | Public Works Building Riverton, UT | RIV | EN[ZEN] | 3 | UU | 40° 31.16' | 111° 56.05' | 1347 | EpiSensor | K2 | Digital | ANSS |

| UURSN Code | Location | SEED Station | SEED Channel | No. of Channels | Network Code | Latitude | Longitude | Elevation (meters) | Sensor | Digitizer | Telemetry | Sponsor |
|------------|---|--------------|--------------|-----------------|--------------|------------|-------------|--------------------|--------------|-----------|-----------|------------|
| ROA | Roan Cliffs, UT | ROA | EHZ | 1 | UU | 39° 39.69' | 110° 21.88' | 2962 | S13 | PSN | Analog | Utah |
| RPF | Rose Park Fire Station, Salt Lake City, UT | RPF | EN[ZEN] | 3 | UU | 40° 46.52' | 111° 55.22' | 1287 | Applied Mems | ANSS-130 | Digital | ANSS |
| RRCU | Rees Ranch, Coalville, UT | RRCU | EHZ | 1 | UU | 40° 53.21' | 111° 26.22' | 2028 | L4C | Basalt | Digital | Utah, USGS |
| | | | EN[ZEN] | 3 | | | | | EpiSensor | | | |
| RRI2 | Red Ridge, ID | RRI2 | BH[ZEN] | 3 | IW | 43° 20.84' | 111° 19.20' | 2547 | 3ESP | RT-130 | Digital | ANSS |
| RSUT | Red Spur, UT | RSUT | EHZ | 1 | UU | 41° 38.31' | 111° 25.90' | 2682 | S13 | PSN | Analog | USGS |
| | | | EHZ | 1 | | | | | | EpiSensor | Basalt | |
| | | | EN[ZEN] | 3 | | | | | | | | |
| SAIU | South Antelope Island, UT | SAIU | EHZ | 1 | UU | 40° 51.29' | 112° 10.89' | 1384 | L4C | PSN | Analog | USGS |
| | | | EHZ | 1 | | | | | | EpiSensor | Basalt | |
| | | | EN[ZEN] | 3 | | | | | | | | |
| SCC | Salt Lake Community College | SCC | EN[ZEN] | 3 | UU | 40° 40.49' | 111° 56.37' | 1306 | EpiSensor | K2 | Digital | ANSS |
| SCS | Syracuse City Cemetery Shop Syracuse, UT | SCS | EN[ZEN] | 3 | UU | 41° 05.73' | 112° 02.81' | 1321 | EpiSensor | K2 | Digital | ANSS |
| SCUT | Santa Clara, UT | SCUT | EN[ZEN] | 3 | UU | 37° 07.69' | 113° 38.68' | 837 | EpiSensor | Etna | Digital | Utah |
| SCY | Salem City Yard, Salem, UT | SCY | EN[ZEN] | 3 | UU | 40° 03.47' | 111° 41.14' | 1386 | Applied Mems | ANSS-130 | Digital | ANSS |
| SGSU | St. George Fire Station #4, UT | SGSU | EN[ZEN] | 3 | UU | 38° 16.61' | 112° 38.42' | 1799 | PA-23 | SMART-24 | Digital | Utah |
| SGU | Sterling, UT | SGU | EHZ | 1 | UU | 39° 10.94' | 111° 38.68' | 2357 | 18300 | PSN | Analog | USGS |
| SHP | Sheep Range, NV | SHP | EHZ | 1 | NN | 36° 30.33' | 115° 09.61' | 1590 | * | * | Digital | UNR |
| SJF | South Jordan Fire Station, South Jordan, UT | SJF | EN[ZEN] | 3 | UU | 40° 33.37' | 111° 56.34' | 1356 | Applied Mems | ANSS-130 | Digital | ANSS |
| SNO | Snow College, UT | SNO | EHZ | 1 | UU | 39° 19.18' | 111° 32.33' | 2503 | Ranger | PSN | Analog | Utah |
| SNUT | Stansbury North, UT | SNUT | EHZ | 1 | UU | 40° 53.10' | 112° 30.52' | 1652 | 18300 | PSN | Analog | USGS |
| | | | EHZ | 1 | | | | | | EpiSensor | Basalt | |
| | | | EN[ZEN] | 3 | | | | | | | | |
| SPR | Wildlife Resource Center Springville, UT | SPR | EN[ZEN] | 3 | UU | 40° 10.94' | 111° 36.71' | 1379 | EpiSensor | K2 | Digital | ANSS |
| SPS | Stansbury Park Sewage Lagoon Stansbury Park, UT | SPS | EN[ZEN] | 3 | UU | 40° 38.97' | 112° 18.95' | 1293 | Applied Mems | ANSS-130 | Digital | ANSS |

| UURSN Code | Location | SEED Station | SEED Channel | No. of Channels | Network Code | Latitude | Longitude | Elevation (meters) | Sensor | Digitizer | Telemetry | Sponsor |
|------------|---|--------------|--------------|-----------------|--------------|------------|-------------|--------------------|--------------|-----------|-----------|------------------|
| SPU | South Promontory Point, UT | SPU | EN[ZEN] | 3 | UU | 41° 18.52' | 112° 26.95' | 2086 | EpiSensor | ANSS-130 | Digital | ANSS |
| | | | HH[ZEN] | 3 | | | | | 3ESP | | | |
| SRU | San Rafael Swell, UT | SRU | EHZ | 1 | UU | 39° 06.65' | 110° 31.43' | 1804 | S13 | PSN | Analog | Utah, ANSS, IRIS |
| | | | HH[ZEN] | 6 | | | | | STS-2 | ANSS-130 | Digital | |
| | | | EN[ZEN] | | | | | | EpiSensor | | | |
| SSC | Sandy Senior Center Sandy, UT | SSC | EN[ZEN] | 3 | UU | 40° 34.89' | 111° 51.35' | 1414 | EpiSensor | K2 | Digital | ANSS |
| SUU | Santaquin Canyon, UT | SUU | EHZ | 1 | UU | 39° 53.29' | 111° 47.45' | 2024 | 18300 | PSN | Analog | USGS |
| SZCU | Shurtz Canyon, UT | SZCU | HH[ZEN] | 3 | UU | 37° 35.72' | 113° 05.25' | 2026 | 3T | SMART-24 | Digital | Utah |
| | | | EN[ZEN] | 3 | | | | | PA-23 | | | |
| TCRU | Three Creeks Reservoir, UT | TCRU | HH[ZEN] | 3 | UU | 38° 36.57' | 112° 26.83' | 2293 | Trillium 120 | SMART-24 | Digital | Utah |
| | | | EN[ZEN] | 3 | | | | | PA-23 | | | |
| TCU | Toone Canyon, UT | TCU | EN[ZEN] | 3 | UU | 41° 07.04' | 111° 24.47' | 2269 | EpiSensor | ANSS-130 | Digital | ANSS |
| | | | HH[ZEN] | 3 | | | | | 3ESP | | | |
| TCUT | Toone Canyon, UT | TCUT | EHZ | 1 | UU | 41° 07.07' | 111° 24.51' | 2320 | L4C | PSN | Analog | USGS |
| TMI | Taylor Mountain, ID | TMI | EHZ | 1 | IE | 43° 18.30' | 111° 55.08' | 2179 | * | * | Digital | INL |
| TMU | Trail Mountain, UT | TMU | HH[ZEN] | 3 | UU | 39° 17.79' | 111° 12.49' | 2731 | Observer | ANSS-130 | Digital | Utah, ANSS |
| | | | EN[ZEN] | 3 | | | | | EpiSensor | | | |
| TPMZ | Teepe Creek, MT | TPMT | EHZ | 1 | MB | 44° 43.79' | 111° 39.94' | 2518 | * | * | Analog | MBMT |
| TPNV | Topopah Spring, NV | TPNV | BH[ZEN] | 3 | US | 36° 56.93' | 116° 14.97' | 1600 | * | * | Digital | USGS |
| TPU | Thanksgiving Point, Lehi, UT | TPU | EN[ZEN] | 3 | UU | 40° 25.81' | 111° 54.13' | 1383 | EpiSensor | K2 | Digital | ANSS |
| TRC | Troy Canyon, NV | TRC | BHZ | 1 | NN | 38° 20.98' | 115° 35.11' | 1815 | * | * | Digital | UNR |
| TRS | Tooele County Radio Shop, Tooele, UT | TRS | EN[ZEN] | 3 | UU | 40° 30.83' | 112° 18.63' | 1568 | EpiSensor | K2 | Digital | ANSS |
| TUC | Tucson, AZ | TUC | BH[ZEN] | 3 | US | 32° 18.58' | 110° 47.05' | 906 | * | * | Digital | USGS |
| UHP | Utah Highway Patrol Farmington, UT | UHP | EN[ZEN] | 3 | UU | 40° 59.47' | 111° 53.88' | 1295 | EpiSensor | K2 | Digital | ANSS |
| UTH | Uintah Town Hall, Uintah, UT | UTH | EN[ZEN] | 3 | UU | 41° 08.65' | 111° 55.52' | 1389 | EpiSensor | K2 | Digital | ANSS |
| UUE | University of Utah EMCB Bldg. Salt Lake City, UT | UUE | EN[ZEN] | 3 | UU | 40° 46.09' | 111° 50.77' | 1449 | EpiSensor | K2 | Digital | ANSS |
| VEC | Valley Emergency Communications Center West Valley City, UT | VEC | EN[ZEN] | 3 | UU | 40° 39.21' | 112° 01.95' | 1480 | EpiSensor | K2 | Digital | ANSS |

| UURSN Code | Location | SEED Station | SEED Channel | No. of Channels | Network Code | Latitude | Longitude | Elevation (meters) | Sensor | Digitizer | Telemetry | Sponsor | |
|------------|--|--------------|--------------|-----------------|--------------|------------|-------------|--------------------|--------------|-----------|-----------|---------|---------|
| VNL | Vernal, UT | VNL | EN[ZEN] | 3 | UU | 40° 27.48' | 109° 32.89' | 1648 | FBA23 | Etna | Digital | Utah | |
| WBC | Weber Canyon, UT | WBC | EN[ZEN] | 3 | UU | 41° 08.38' | 111° 54.05' | 1602 | EpiSensor | K2 | Digital | ANSS | |
| WCF | Wellsville Fire Station, Wellsville, UT | WCF | EN[ZEN] | 3 | UU | 41° 38.37' | 111° 55.94' | 1387 | Applied Mems | ANSS-130 | Digital | ANSS | |
| WCN | Washoe, NV | WCN | HHZ | 1 | NN | 39° 18.10' | 119° 45.38' | 1500 | * | * | Digital | UNR | |
| WCO | Washington City Office Building, UT | WCO | EN[ZEN] | 3 | UU | 37° 07.91' | 113° 30.56' | 837 | EpiSensor | Etna | Digital | Utah | |
| WCU | Willow Creek, UT | WCU | EHZ | 1 | UU | 38° 57.88' | 112° 05.44' | 2673 | 18300 | PSN | Analog | USGS | |
| | | | EHZ | 1 | | | | | EpiSensor | Basalt | Digital | | |
| | | | EN[ZEN] | 3 | | | | | | | | | |
| WDO | Saint George, Washington County School District Office, UT | WDO | EN[ZEN] | 3 | UU | 37° 06.46' | 113° 35.19' | 831 | PA-23 | SMART-24 | Digital | Utah | |
| WES | Westminster College Salt Lake City, UT | WES | EN[ZEN] | 3 | UU | 40° 43.97' | 111° 51.26' | 1341 | EpiSensor | K2 | Digital | ANSS | |
| WHS | West High School | WHS | EN[ZEN] | 3 | UU | 40° 46.51' | 111° 53.93' | 1301 | EpiSensor | K2 | Digital | ANSS | |
| WMUT | West Mountain, UT | WMUT | EHZ | 1 | UU | 40° 04.60' | 111° 50.00' | 1981 | L4C | PSN | Analog | USGS | |
| | | | EHZ | 1 | | | | | | EpiSensor | Basalt | | Digital |
| | | | EN[ZEN] | 3 | | | | | | | | | |
| WRP | Water Reclamation Plant Salt Lake City, UT | WRP | EN[ZEN] | 3 | UU | 40° 48.82' | 111° 55.87' | 1286 | Applied Mems | ANSS-130 | Digital | ANSS | |
| WTU | Western Traverse Mountains, UT | WTU | EH[ZEN] | 4 | UU | 40° 27.29' | 111° 57.21' | 1552 | S13 | PSN | Analog | USGS | |
| | | | ELZ | | | | | | | | | | |
| | | | EN[ZEN] | 3 | | | | | Applied Mems | ANSS-130 | Digital | ANSS | |
| WUAZ | Wupatki, AZ | WUAZ | BH[ZEN] | 3 | US | 35° 31.01' | 111° 22.43' | 1592 | * | * | Digital | USGS | |
| WVUT | Wellsville, UT | WVUT | EHZ | 1 | UU | 41° 36.61' | 111° 57.55' | 1828 | L4C | PSN | Analog | USGS | |
| YDC | Denny Creek, MT | YDC | EHZ | 1 | WY | 44° 42.51' | 111° 14.60' | 2025 | L4C | PSN | Analog | USGS | |
| YFT | Old Faithful (YNP), WY | YFT | HH[ZEN] | 3 | WY | 44° 27.05' | 110° 50.24' | 2292 | Trillium 120 | 72A-07 | Digital | USGS | |
| | | | EN[ZEN] | 3 | | | | | Titan | | | | |
| | | | EHZ | 1 | | | | | L4C | | | | None |
| YGC | Grayling Creek, MT | YGC | EHZ | 1 | WY | 44° 47.77' | 111° 06.45' | 2075 | L4C | PSN | Analog | USGS | |
| YHB | Horse Butte, MT | YHB | EHZ | 1 | WY | 44° 45.07' | 111° 11.71' | 2157 | L4C | PSN | Analog | USGS | |
| | | | HH[ZEN] | 3 | | | | | Titan | ANSS-130 | Digital | | |
| | | | EN[ZEN] | 3 | | | | | | | | | |

| UURSN Code | Location | SEED Station | SEED Channel | No. of Channels | Network Code | Latitude | Longitude | Elevation (meters) | Sensor | Digitizer | Telemetry | Sponsor |
|------------|------------------------------|--------------|--------------|-----------------|--------------|------------|-------------|--------------------|--------------|-----------|-----------|---------|
| YHH | Holmes Hill (YNP), WY | YHH | EHZ | 1 | WY | 44° 47.30' | 110° 51.03' | 2717 | S13 | PSN | Analog | USGS |
| | | | HH[ZEN] | 3 | | | | | Trillium 120 | | | |
| | | | EN[ZEN] | 3 | | | | | Titan | Q330 | Digital | |
| YHL | Hebgen Lake, MT | YHL | HH[ZEN] | 3 | WY | 44° 51.05' | 111° 10.98' | 2691 | Trillium 120 | Q330 | Digital | USGS |
| | | | EN[ZEN] | 3 | | | | | Titan | | | |
| | | | EH[ZEN] | 3 | | | | | S13 | PSN | Analog | |
| YLAZ | Lake Butte (YNP), WY | YLA | EHZ | 1 | WY | 44° 30.76' | 110° 16.12' | 2580 | L4C | PSN | Analog | USGS |
| YLT | Little Thumb Creek (YNP), WY | YLT | EHZ | 1 | WY | 44° 26.25' | 110° 35.28' | 2439 | L4C | PSN | Analog | USGS |
| YMC | Maple Creek (YNP), WY | YMC | EH[ZEN] | 3 | WY | 44° 45.53' | 111° 00.41' | 2073 | S13 | PSN | Analog | USGS |
| YML | Mary Lake (YNP), WY | YML | EH[ZEN] | 3 | WY | 44° 36.20' | 110° 38.63' | 2653 | L4C | PSN | Analog | USGS |
| YMP | Mirror Plateau (YNP), WY | YMP | EHZ | 1 | WY | 44° 44.38' | 110° 09.40' | 2774 | S13 | PSN | Analog | USGS |
| | | | HH[ZEN] | 3 | | | | | Trillium 120 | | | |
| | | | EN[ZEN] | 3 | | | | | Titan | Q330 | Digital | |
| YMR | Madison River (YNP), WY | YMR | HH[ZEN] | 3 | WY | 44° 40.12' | 110° 57.90' | 2149 | Trillium 120 | Q330 | Digital | USGS |
| | | | EN[ZEN] | 3 | | | | | Titan | | | |
| | | | EHZ | 1 | | | | | L4C | PSN | Analog | |
| YMS | Mount Sheridan (YNP), WY | YMS | EHZ | 1 | WY | 44° 15.84' | 110° 31.67' | 3106 | L4C | PSN | Analog | USGS |
| YMV | Mammoth Vault (YNP), WY | YMV | EHZ | 1 | WY | 44° 58.42' | 110° 41.33' | 1829 | L4C | PSN | Analog | USGS |
| YNE | Northeast Entrance (YNP), WY | YNE | HH[ZEN] | 3 | WY | 45° 00.46' | 110° 00.48' | 2343 | Compact | Taurus | Digital | USGS |
| YNR | Norris Junction (YNP), WY | YNR | HH[ZEN] | 3 | WY | 44° 42.93' | 110° 40.75' | 2336 | Trillium 120 | RT-130 | Digital | USGS |
| | | | EN[ZEN] | 3 | | | | | Titan | | | |
| | | | EHZ | 1 | | | | | L4C | PSN | Analog | |
| YPC | Pelican Cone (YNP), WY | YPC | EHZ | 1 | WY | 44° 38.88' | 110° 11.55' | 2932 | L4C | PSN | Analog | USGS |
| YPK | Parker Peak (YNP), WY | YPK | EH[ZEN] | 3 | WY | 44° 43.91' | 109° 55.32' | 2897 | L4C | PSN | Analog | USGS |
| YPM | Purple Mountain (YNP), WY | YPM | EHZ | 1 | WY | 44° 39.43' | 110° 52.12' | 2582 | L4C | PSN | Analog | USGS |
| YPP | Pitchstone Plateau (YNP), WY | YPP | EHZ | 1 | WY | 44° 16.26' | 110° 48.27' | 2707 | S13 | PSN | Analog | USGS |
| | | | HH[ZEN] | 3 | | | | | Trillium 120 | | | |
| | | | EN[ZEN] | 3 | | | | | Titan | Q330 | Digital | |
| YSB | Soda Butte (YNP), WY | YSB | EHZ | 1 | WY | 44° 53.04' | 110° 09.06' | 2072 | L4C | PSN | Analog | USGS |
| YTP | The Promontory (YNP), WY | YTP | EHZ | 1 | WY | 44° 23.51' | 110° 17.10' | 2384 | L4 | PSN | Analog | USGS |
| | | | HH[ZEN] | 3 | | | | | Trillium 120 | | | |
| | | | EN[ZEN] | 3 | | | | | Titan | Q330 | Digital | |
| YUF | Upper Falls (YNP), WY | YUF | HH[ZEN] | 3 | WY | 44° 42.76' | 110° 30.71' | 2394 | 3ESP | ANSS-130 | Digital | USGS |
| | | | EN[ZEN] | 3 | | | | | Titan | | | |
| | | | EHZ | 1 | | | | | L4C | PSN | Analog | |
| ZNPU | Zion National Park, UT | ZNPU | HH[ZEN] | 3 | UU | 37° 21.37' | 113° 07.52' | 1953 | Trillium 120 | Q330 | Digital | Utah |
| | | | EN[ZEN] | 3 | | | | | EpiSensor | | | |

* Indicates station operated by another agency and recorded as part of University of Utah regional seismic network

Network Statistics: 776 data channels from 251 stations were being recorded at the end of this report period

EXPLANATION OF TABLE

UURSN Code: Station code used in routine processing. Due to processing software limitations, the station code may not be the station code used by the original operator. For multi-component stations, the vertical, east-west, and north-south high gain (low gain) components are identified by an appended Z(V), E(L), and N(M), respectively, in UUSS phase files.

Location: General description of station location. YNP = Yellowstone National Park.

SEED Station: The SEED (Standard for the Exchange of Earthquake Data) station code used by the original operator.

SEED Channel: The SEED format uses three letters to name seismic channels. See <<http://www.iris.edu/manuals/SEEDManual_V2.4.pdf>> for information about the SEED channel naming convention. Relevant sections are reproduced below. In the SEED convention, each letter describes one aspect of the instrumentation and its digitization. The first letter specifies the general sampling rate and the response band of the instrument. Band codes used in this table include:

| Band Code | Band Type | Sample Rate | Corner Period |
|-----------|------------------------|--------------------|---------------|
| E | Extremely short period | ≥ 80 Hertz | < 10 seconds |
| H | High broadband | ≥ 80 Hertz | ≥ 10 seconds |
| B | Broadband | ≥ 10 to < 80 Hertz | ≥ 10 seconds |
| S | Short period | ≥ 10 to < 80 Hertz | < 10 seconds |

The second letter specifies the family to which the sensor belongs. Sensor families used in this table are:

| Instrument Code | Description |
|-----------------|-----------------------|
| H | High gain seismometer |
| L | Low gain seismometer |
| N | Accelerometer |

The third letter specifies the physical configuration of the members of a multiple axis instrument package. Channel orientations used in this table are:

Z E N Traditional (Vertical, East-West, North-South)

Number of Channels: Total number of waveform channels recorded.

Network Code: The FDSN (Federation of Digital Seismographic Networks) registered network code. See <<<http://www.iris.edu/stations/networks.txt>>> for information about registered seismograph network codes. Network codes referenced in this table:

| Network Code | Network name; Network operator or responsible organization |
|--------------|---|
| AR | Northern Arizona Seismic Network, Northern Arizona University |
| LB | Leo Brady Network; Sandia National Laboratory |
| IE | Idaho National Laboratory |

| | |
|----|--|
| IU | IRIS/USGS Network; USGS Albuquerque Seismological Laboratory |
| IW | Intermountain West Network |
| MB | Montana Regional Seismic Network; Montana Bureau of Mines and Geology |
| NN | Western Great Basin; University of Nevada, Reno |
| NP | National Strong Motion Program; U.S. Geological Survey |
| RE | U.S. Bureau of Reclamation Seismic Networks; U.S. Bureau of Reclamation, Denver Federal Center |
| UU | University of Utah Regional Network; University of Utah |
| US | US National Network; USGS National Earthquake Information Center |
| WY | Yellowstone Wyoming Seismic Network; University of Utah |

Latitude, Longitude: Sensor location in degrees and decimal minutes; North latitude, West longitude.

Elevation: Sensor altitude in meters above sea level.

| Sensor | Description |
|------------------|---|
| L4, L4C | Mark Products short-period seismometer |
| S13, 18300 | Geotech S13 or 18300 short-period seismometer |
| Ranger | Kinometrics Ranger short-period seismometer |
| 40T | Guralp CMG-40T broadband seismometer |
| 3T | Guralp CMG-3T broadband seismometer |
| 3ESP | Guralp CMG-3ESP broadband seismometer |
| STS-2 | Streckheisen STS-2 broadband seismometer |
| FBA23 | Kinometrics FBA-23 accelerometer |
| EpiSensor | Kinometrics EpiSensor accelerometer |
| Applied Mems | Applied Mems accelerometer |
| PA-23 | Geotech PA-23 accelerometer |
| Compact | Nanometrics Compact broadband seismometer |
| Trillium 120 | Nanometrics Trillium 120 broadband seismometer |
| Trillium 240 | Nanometrics Trillium 240 broadband seismometer |
| Titan | Nanometrics Titan accelerometer |
| Observer | Refraction Technology (REF TEK) 151 Observer broadband seismometer |
| Digitizer | Description |
| K2 | Kinometrics Altus Series K2 (19-bit resolution field digitizer) |
| Etna | Kinometrics Altus Series Etna (18-bit resolution field digitizer) |
| 72A-07 | Refraction Technology (REF TEK) model 72A-07 (24-bit field digitizer) |
| 72A-08 | Refraction Technology (REF TEK) model 72A-08 (24-bit field digitizer) |
| ANSS-130 | Refraction Technology (REF TEK) model 130-ANSS/02 (24-bit resolution field digitizer) |
| RT-130 | Refraction Technology (REF TEK) model RT-130 (24-bit resolution field digitizer) |
| Q330 | Quanterra, Inc Q330 digitizer (24-bit resolution field digitizer) |
| SMART-24 | Geotech SMART-24 digitizer (24-bit resolution field digitizer) |
| PSN | PSN-ADC-SERIAL version III (16-bit resolution field digitizer) |
| Basalt | Kinometrics Basalt (24-bit resolution field digitizer) |

Taurus Nanometrics Taurus (24-bit resolution field digitizer)

Telemetry Description

Analog Data transmission is analog along part of the transmission pathway

Digital Data are converted to digital form at the station site

None On-site recording system

Sponsor (or Operator for stations marked by * in preceding columns)

USGS U.S. Geological Survey

Utah State of Utah

ANSS Advanced National Seismic System

INL Idaho National Laboratory

USBR U.S. Bureau of Reclamation

LLNL Lawrence Livermore National Laboratory

Sandia Sandia National Laboratory

BYU-I Brigham Young University, Idaho (formerly Ricks College)

MBMT Montana Bureau of Mines and Geology

NSMP National Strong Motion Project, U.S. Geological Survey

UNR University of Nevada, Reno

NETWORK CHANGES DURING JULY 1-SEPTEMBER 30, 2011

July 1 to August 29 The total number of channels has changed due to ARRA upgrades in Utah (EHZ and EN[ZEN] at seismic stations NPI, MLI, LEVU, and RSUT).

July 21 New seismic station PCCW (EHZ, EN[ZEN]). This station replaces the EarthScope TA station L17A.

August 12 to
September 3 The total number of channels has changed due to ARRA upgrades in Yellowstone (EH[ZEN], EN[ZEN], HH[ZEN] at seismic stations YMP, YMC, YJC, and YTP).

August 21 New seismic station YNE (HH[ZEN]).

September 2 New seismic station YHL (HH[ZEN], EN[ZEN]).